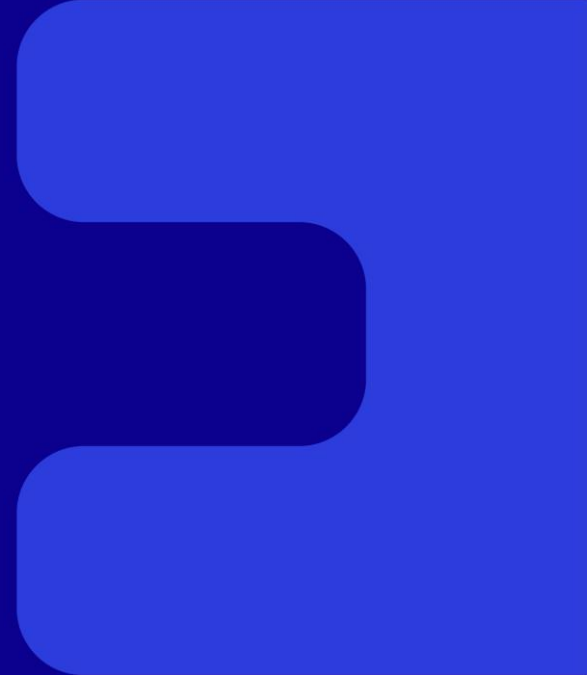


Sancrox Quarry Expansion

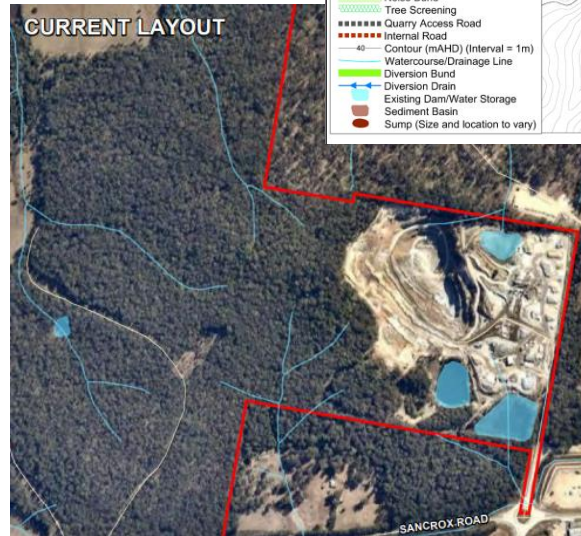
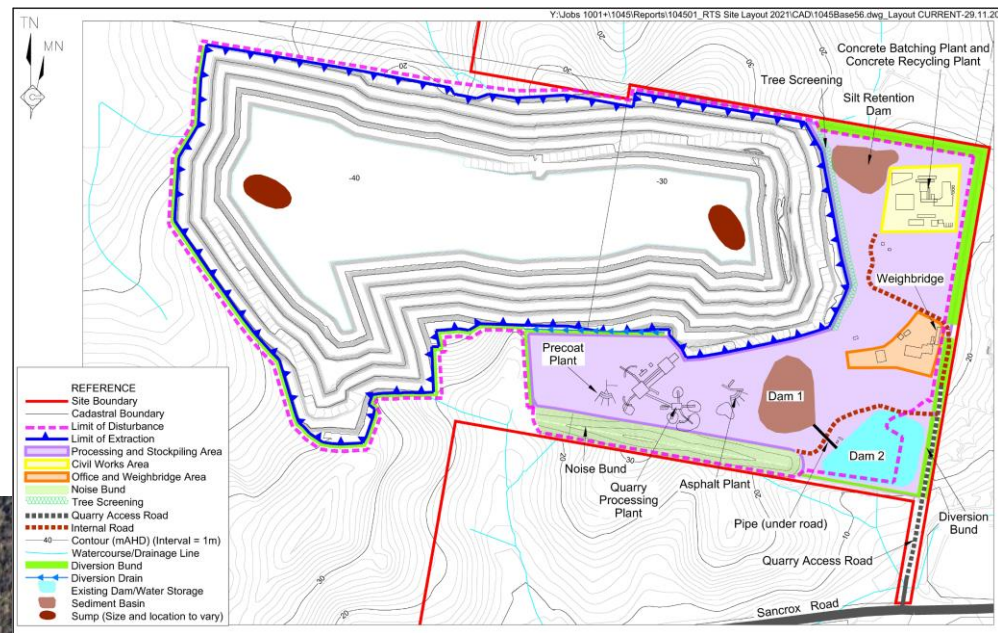
IPC Briefing

23 August 2024



The Proposal

- Expansion of existing gravel quarry
- Extraction and on-site processing - 530,000 tonnes per annum;
- Concrete batching plant – 20,000 tpa
- Concrete recycling – 20,000 tpa
- Asphalt production – 50,000 tpa
- Employment - 25 staff
- Hours of operation:
 - Processing, extraction, trucks – 5am-10pm
 - Blasting – 8am-5pm Mon-Fri
 - 10pm- 5pm - 20 days pa
- Closure and rehabilitation: landform comprises revegetated benches



The Proposal – Quarry Products and Market

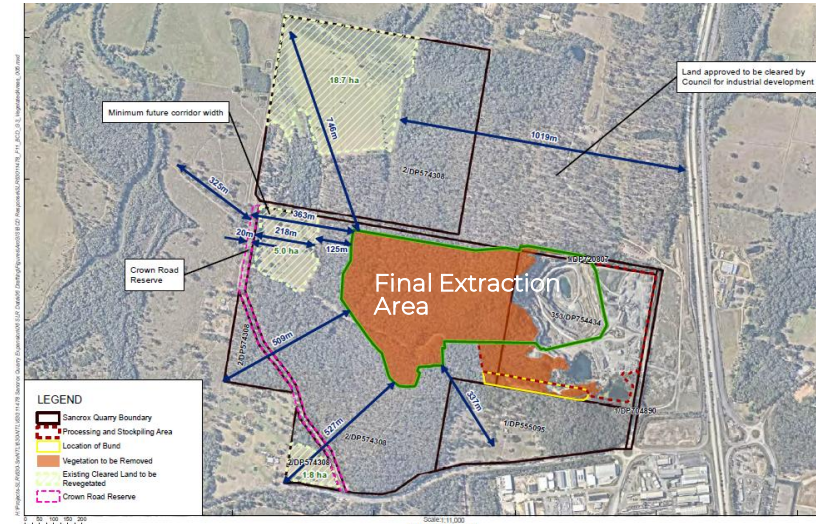
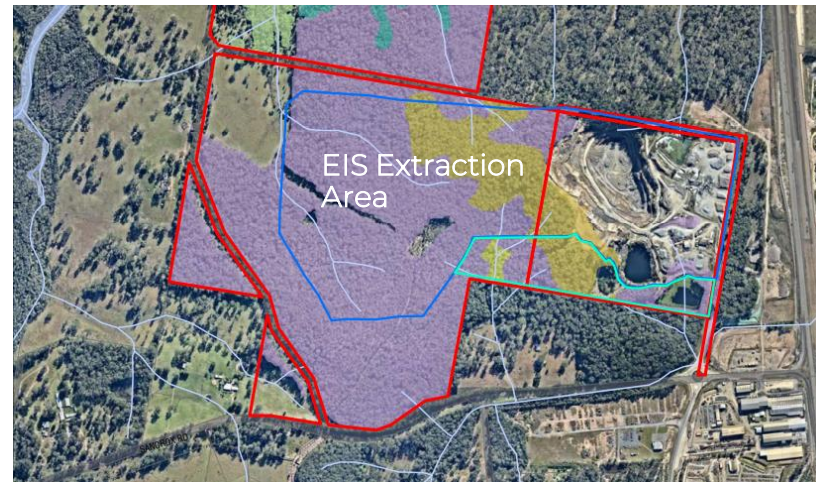
- Identified as a Regionally Significant Extractive Materials Resource.
- Strong long-term growth in the demand for aggregates, concrete and asphalt on the mid-north coast
 - Sancrox Quarry hard rock products are extensively used by public and private customers, including for major infrastructure projects and for commercial development projects.
 - Demonstrable demand from increased population, housing and infrastructure requirements
- Well documented population increase projections for the Mid-North Coast
 - More than 76,000 new residents and 46,000 new homes.
 - Significance growth around Port Macquarie in Council's Urban Growth Management Strategy
- The construction of a new house requires c.110 tonnes of aggregates and 53m³ of concrete.
- Civil materials supply chain for roads, housing, employment/industrial, education and medical facilities.
- CCAA estimates we use the equivalent of 7 tonnes of aggregate per person.
- Current capacity of Sancrox Quarry = 120,000 tonnes (c. 6 months supply)

Key Issues – Biodiversity

- Assessed under Framework for Biodiversity Assessment (FBA), with Biodiversity Assessment Report (BAR). Revised for the RTS in 2021.
 - Multiple iterations of BAR over more than 4 years
 - Final BAR Addendum - April 2024.

Avoidance Measures

- 13.2ha of forest vegetation and Koala habitat avoided (31% reduction from EIS design) through reduced extraction area (43.1ha to 29.9ha)
- Avoids Subtropical Coastal Floodplain Forest EEC
- Protection of biodiversity corridors
- Retention of 63 ha of native vegetation



Key Issues – Biodiversity

Impacts

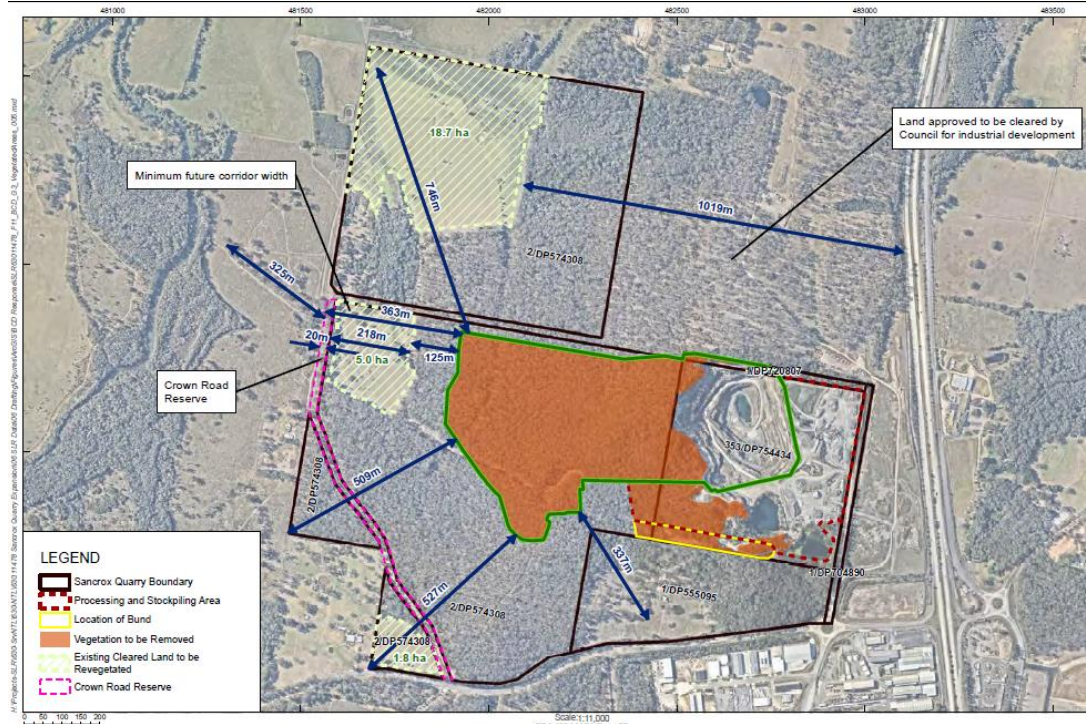
- Clearing 29.9ha of native vegetation and Koala habitat
- Two main forest types (not listed as TECs):
 - Tallowood Small-fruited Grey Gum Forest
 - Spotted Gum Grey Ironbark Forest

Offset Strategy

- Ecosystem credits (1732) required to offset loss of forest vegetation
- Species credits (Koala – 777) required to offset loss of Koala habitat
- 49ha Stewardship Site to be established.

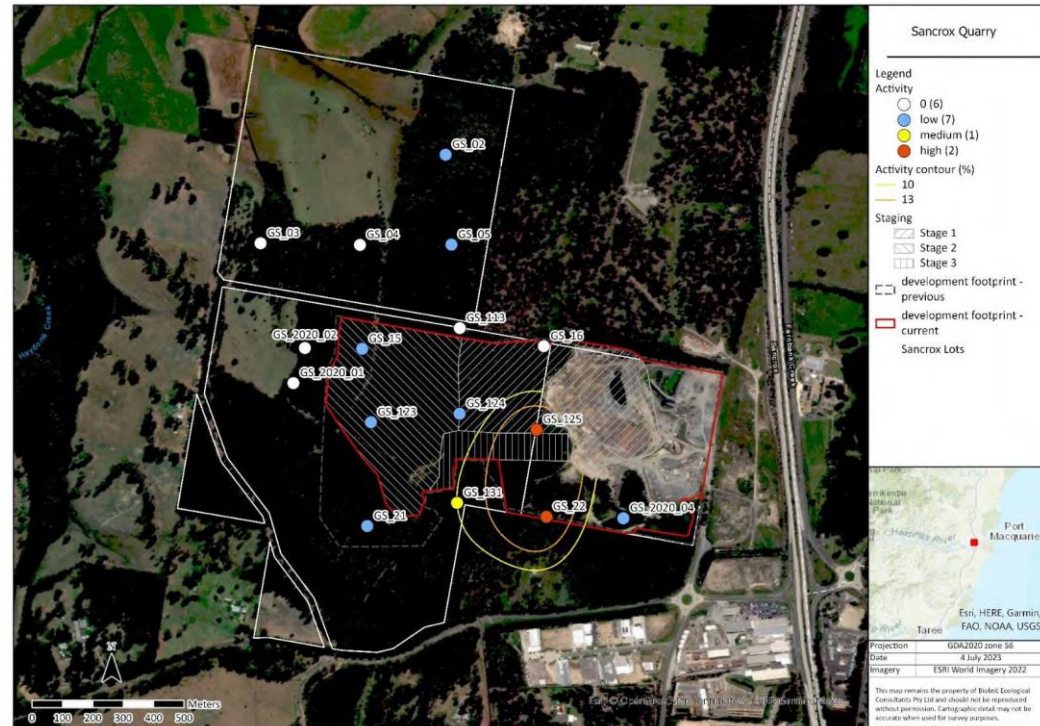
Mitigation Measures

- Vegetation Management Plan (VMP)
- Revegetation of 25.6ha currently cleared land.
- Protection of existing forest and biodiversity corridors west of proposed extraction area

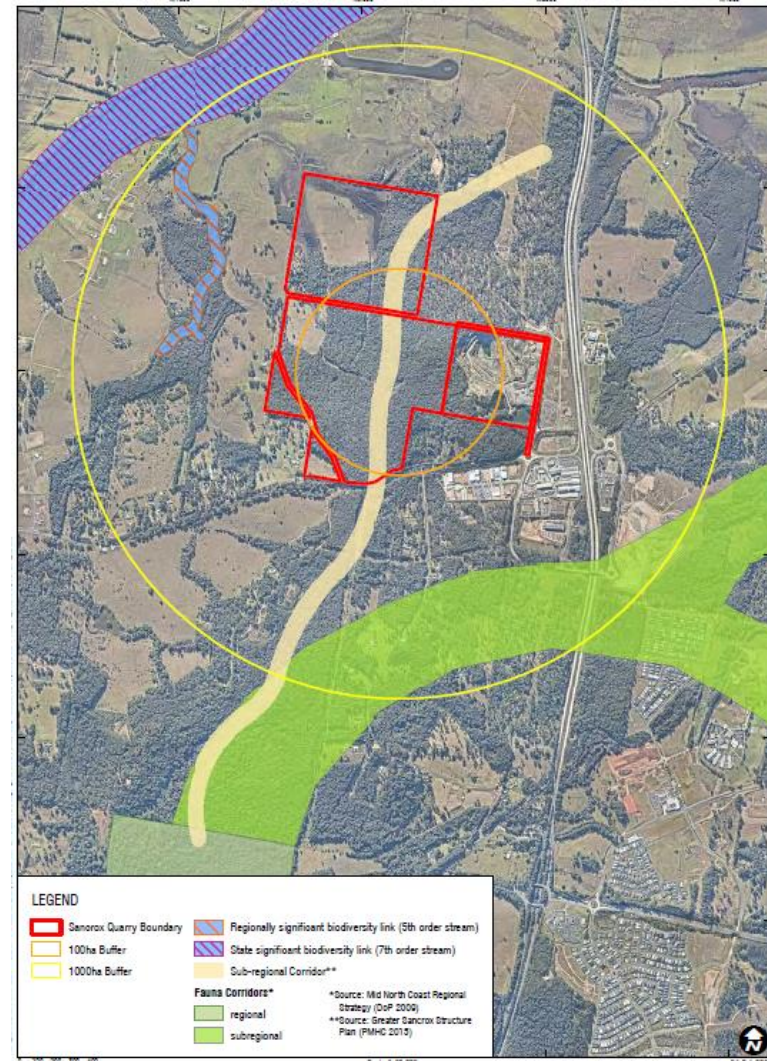
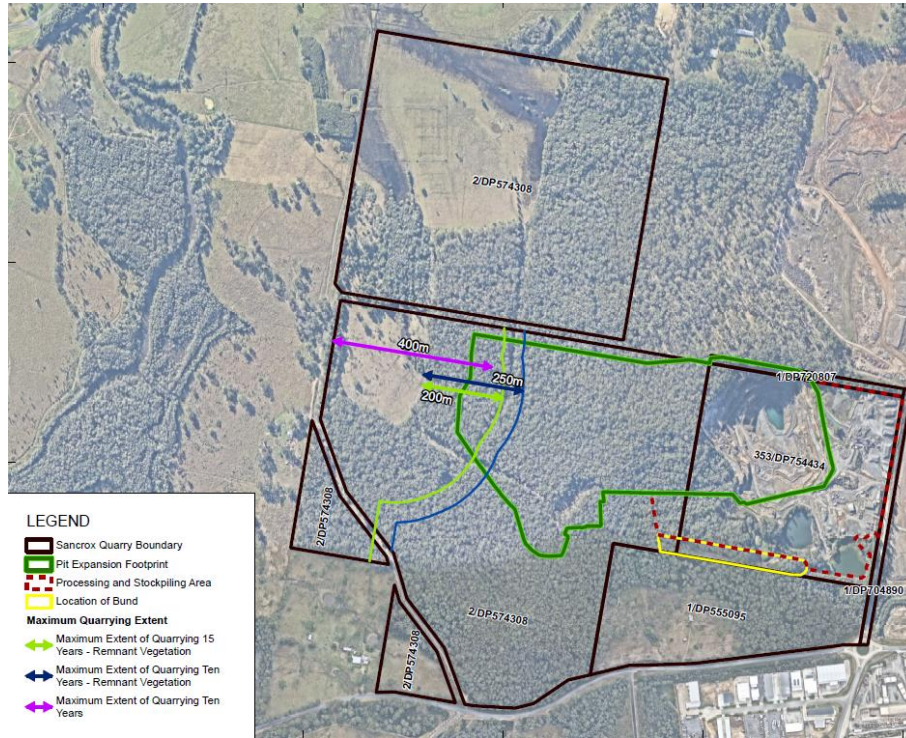


Key Issues – Biodiversity (Koala)

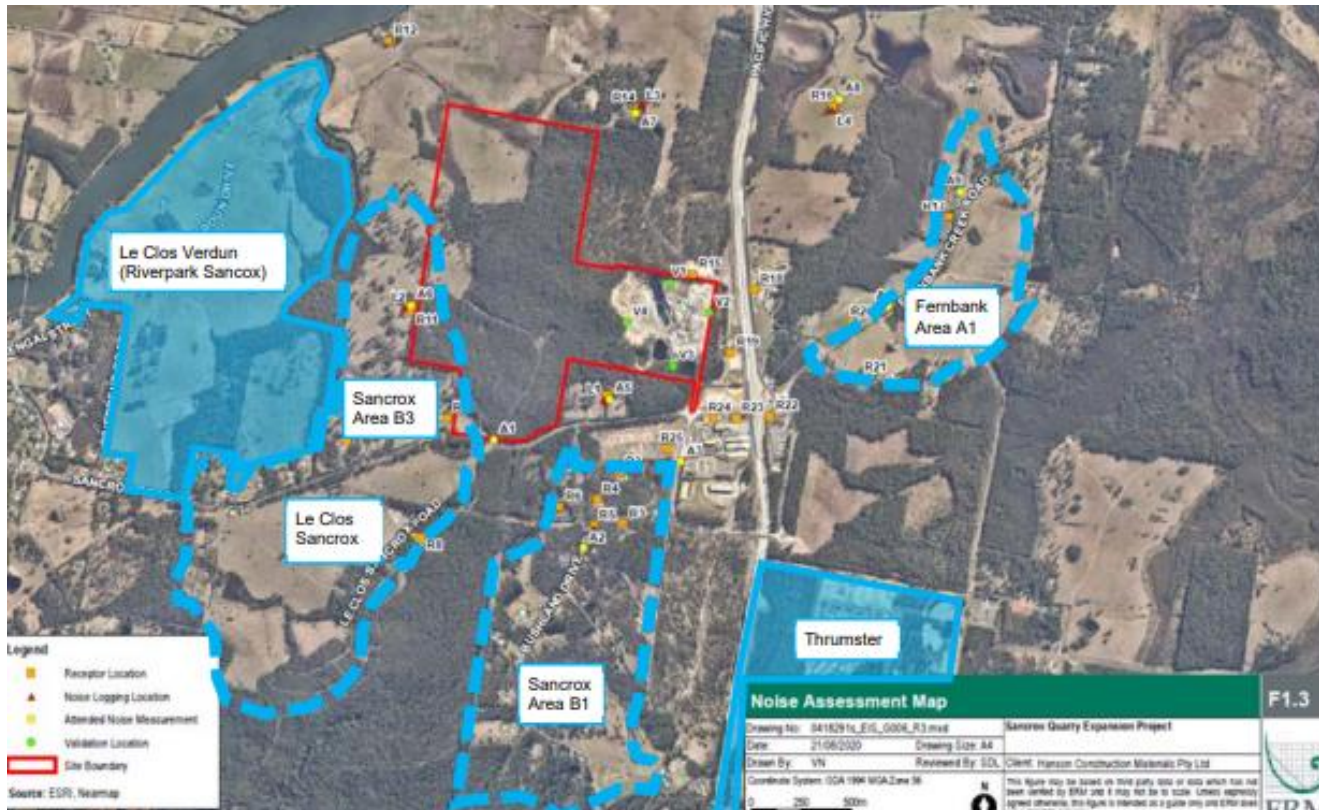
- Expert advice, targeted surveys and mapping of Koala activity contours (BioLink)
- Koala feed trees present across forested areas
- Areas of varying Koala activity adjacent to existing pit and across the landholding
- Koala Management Measures proposed:
 - VMP
 - Revegetation standards (PKFTs planting density, survival and use by Koala)
 - Area of high Koala activity avoided until re-veg standards met
 - Fauna Management Plan
- Biodiversity offsets – onsite and credits
- Protection of biodiversity corridors – 10 years



Key Issues – Biodiversity (Corridor)



Key Issue – Amenity



- Air Quality
 - Typical Day – average
 - Maximum Day – 2,600t
 - Complies at all existing and possible future residential receptors (during 'typical day' and normal 'maximum day')
 - Real-time Reactive Management and AQMP
- Noise
 - Equivalent to existing
 - Boundary noise bund
 - Blasting – commitment to manage blasts along northern boundary (90m buffer)

Key Issue – Water

Surface Water

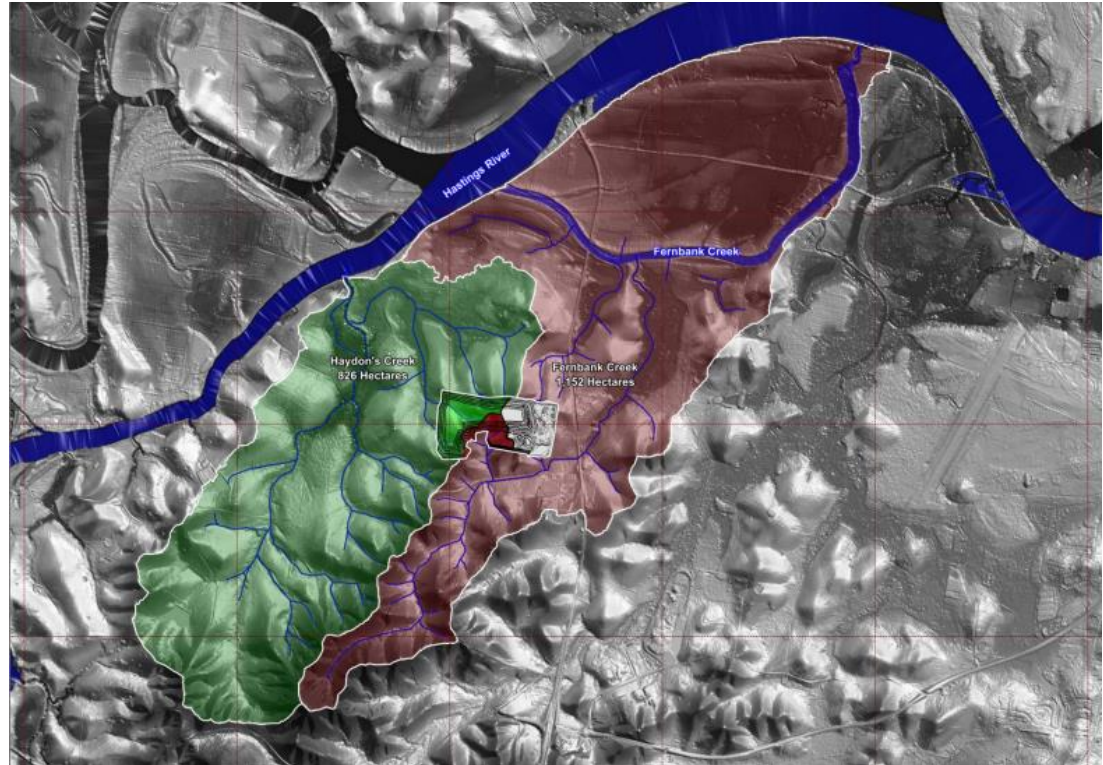
- Ongoing management of cross boundary seepage (which does not appear to be quarry-related)
- Existing on-site dams to be used

• Groundwater

- Peer Review by REN Consulting
- Class 1 Groundwater model
- Low hydraulic conductivity
- Only 1 x groundwater user affected by 2m drawdown
- Model refinement and ongoing monitoring

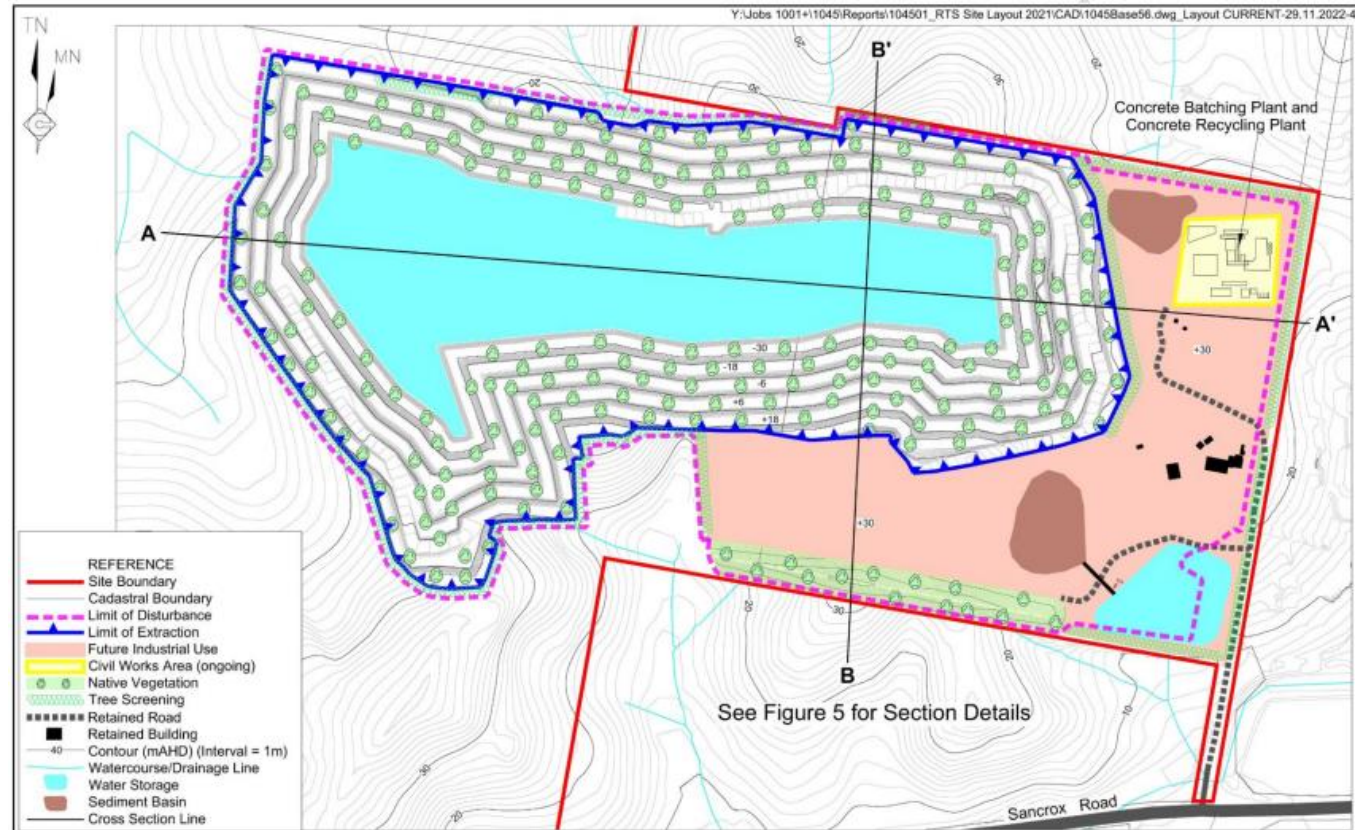
• Water Access Licence

- Water supply from harvested water, ground water and town water
- Water Licences are available for purchase



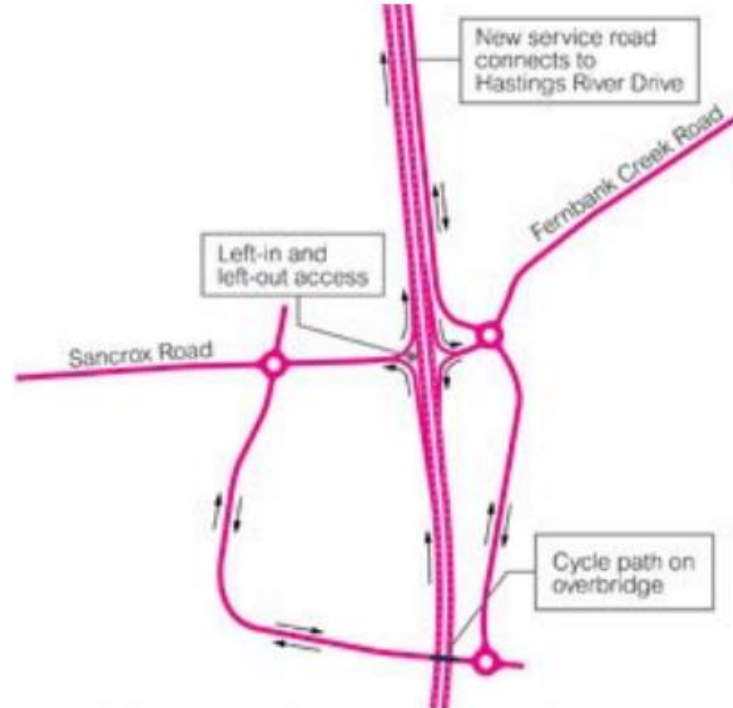
Key Issue – Final Landform and Rehabilitation

- Final landform is a quarry void that will be partially filled with water
- Vegetated benches
- Future industrial use in eastern areas at completion of quarrying



Key Issue – Traffic and Transport

- 122 additional heavy vehicles per day
 - 90 quarry trucks associated with increased capacity
 - 32 trucks associated with recycling, asphalt and concrete batching
- Access to Pacific Highway via:
 - Northbound - Left in and left out directly to/from Sancrox Road
 - Southbound – via the new overpass and roundabout at Fernbank Creek Road
- All roundabouts and access roads would operate well within acceptable limits of service
- Haulage levy agreed with Council



Key Issue – Aboriginal Heritage

- The potential scar tree located west of the extraction area will be avoided and protected with temporary fencing to ensure there is no accidental damage to the tree.
- Hanson provides a commitment that all employees and subcontractors undergo environment awareness training as part of the site induction.
 - Only information endorsed by RAPs will be included,
 - A representative of the RAPs will be invited to participate in the induction sessions for major contractors.
- The ceremonial site, although now completely destroyed, is considered to have high cultural significance and recognition of its location within the Sancrox area will be displayed in the quarry site office.
- The development of any cultural information will be undertaken in consultation with the Birpai Local Aboriginal Land Council.
- Hanson intends to employ Indigenous land managers to assist with managing the biodiversity on the site, including Koala habitat, and the proposed Stewardship site.

Department's Assessment and Recommendations

- Hanson generally supports Department's assessment and recommendations
- Significant reductions, concessions, and mitigation measures - over the past 3 year
- Agreed project and conditions:
 - Limit the quarry to the threshold of what is economically feasibility
 - Minimise environmental impacts
 - Supports regional social growth and development.

Thank you

