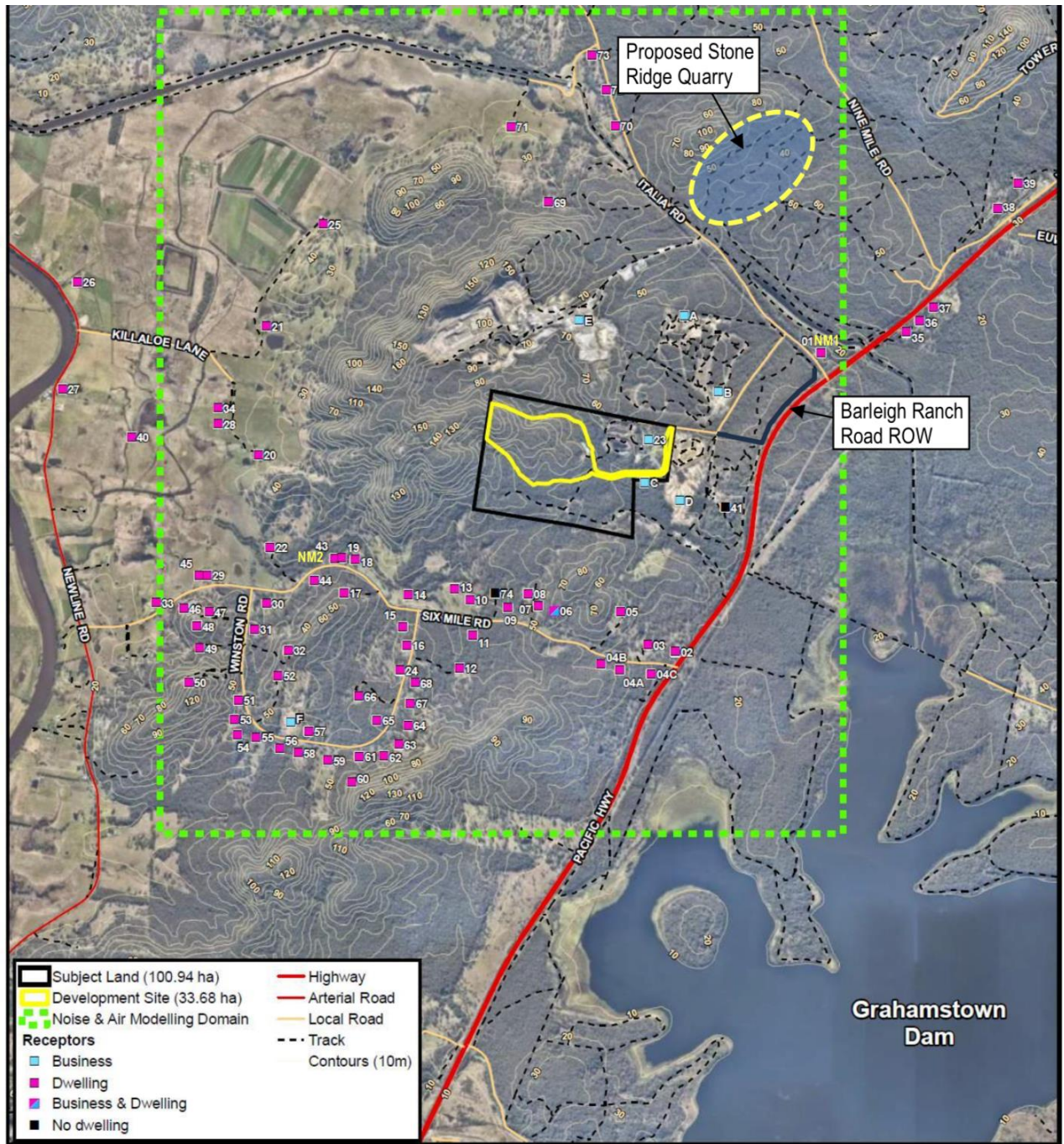


Eagleton Quarry Project – NSW Planning briefing to Independent Planning Commission





- LEGEND**
- DP OVERLAY BOUNDARY
 - DIGITAL CADASTRE BOUNDARY
 - PROPOSED WORKS SUBJECT TO TNSW APPROVAL
 - CONCURRENT WORKS SUBJECT TO PSC APPROVAL
 - PLAN AREA AT 1:500

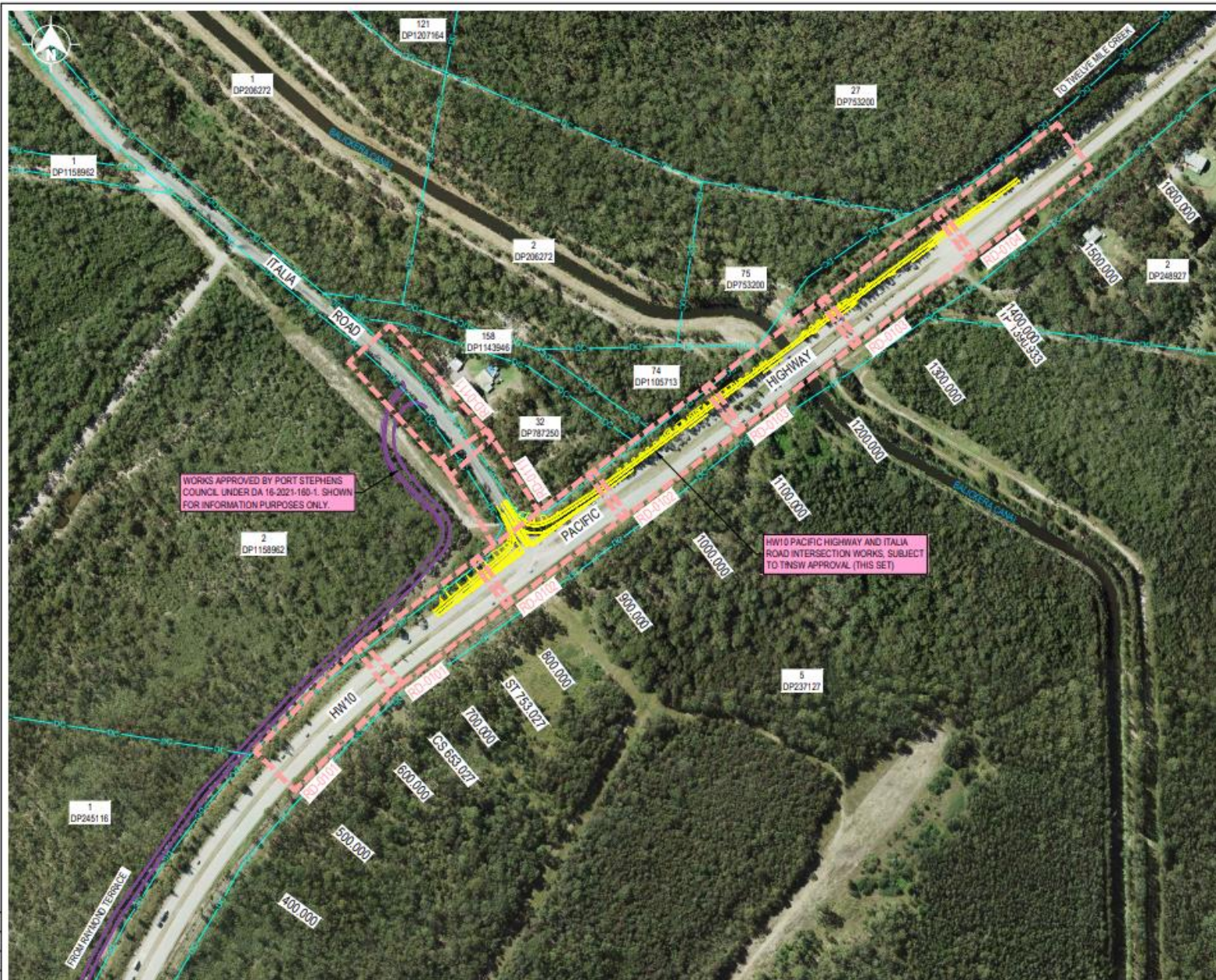
NOTES

ALL WORKS TO BE CARRIED OUT IN ACCORDANCE WITH CURRENT TNSW QA SPECIFICATIONS AND AUSTRALIAN STANDARDS UNLESS OTHERWISE STATED

ALL INVESTIGATIONS AND WORKS TO BE UNDERTAKEN IN ACCORDANCE WITH TNSW QA SPECIFICATION G22 - WORK HEALTH AND SAFETY (CONSTRUCTION AND MAINTENANCE WORKS)

PROVISION FOR TRAFFIC DURING CONSTRUCTION TO BE IN ACCORDANCE WITH TNSW QA SPECIFICATION G10 - TRAFFIC MANAGEMENT AND TNSW TRAFFIC CONTROL AT WORK SITE MANUAL

REFER TO GE-0002 FOR DRAWING LIST





NOT FOR CONSTRUCTION



DRAWING FILE LOCATION / NAME A:\1927870\DWG\general\G00-192787-015-GS-0004.dwg		DESIGN LOT CODE		DESIGN MODEL FILE(S) USED FOR DOCUMENTATION OF THIS DRAWING		PLOT DATE / TIME 8/29/2022 11:22 AM		PLOT BY general		CLIENT EAGLETON ROCK SYNDICATE		PORT STEPHENS COUNCIL HW10 - PACIFIC HIGHWAY ITALIA ROAD, EAGLETON INTERSECTION WORKS GENERAL OVERVIEW PLAN A3	
EXTERNAL REFERENCE FILES		REV	DATE	AMENDMENT / REVISION DESCRIPTION	APPROVAL	SCALES ON A3 SIZE DRAWING 0 50 100 150 HORIZONTAL SCALE 1:400m		DRAWINGS / DESIGN PREPARED BY COMPANY NAME / LOGO 		TITLE	NAME	DATE	TNSW REGISTRATION No. XXXXXXX/XXXXXX
X_192787-SHT		0	24.06.22	STRATEGIC DESIGN		CO-ORDINATE SYSTEM MGA ZONE 56		HEIGHT DATUM AHD		DESIGN	R. BROWN	28.06.22	ISSUE STATUS STRATEGIC DESIGN
X_192787-IMAGE		1	24.06.22	REISSUED FOR STRATEGIC DESIGN						DESIGN CHECK	I. BROWN	28.06.22	ISSUE No. GE-0004
X_192787-LABELS		2	29.06.22	ADDITIONAL VEHICLE SWEEP PATHS						PROJECT MGR	I. BROWN	28.06.22	SHEET No. 2
X_192787-SURVEY													PART 1
X_192787-SURVEY_BODYS													ISSUE 2



Legend
 Eagleton Quarry
 Proposed Truck Route

Proposed Quarry Product Haulage Route



Eagleton Rock Syndicate Pty Ltd
 Eagleton Quarry
 13 Barleigh Ranch Way, Eagleton NSW

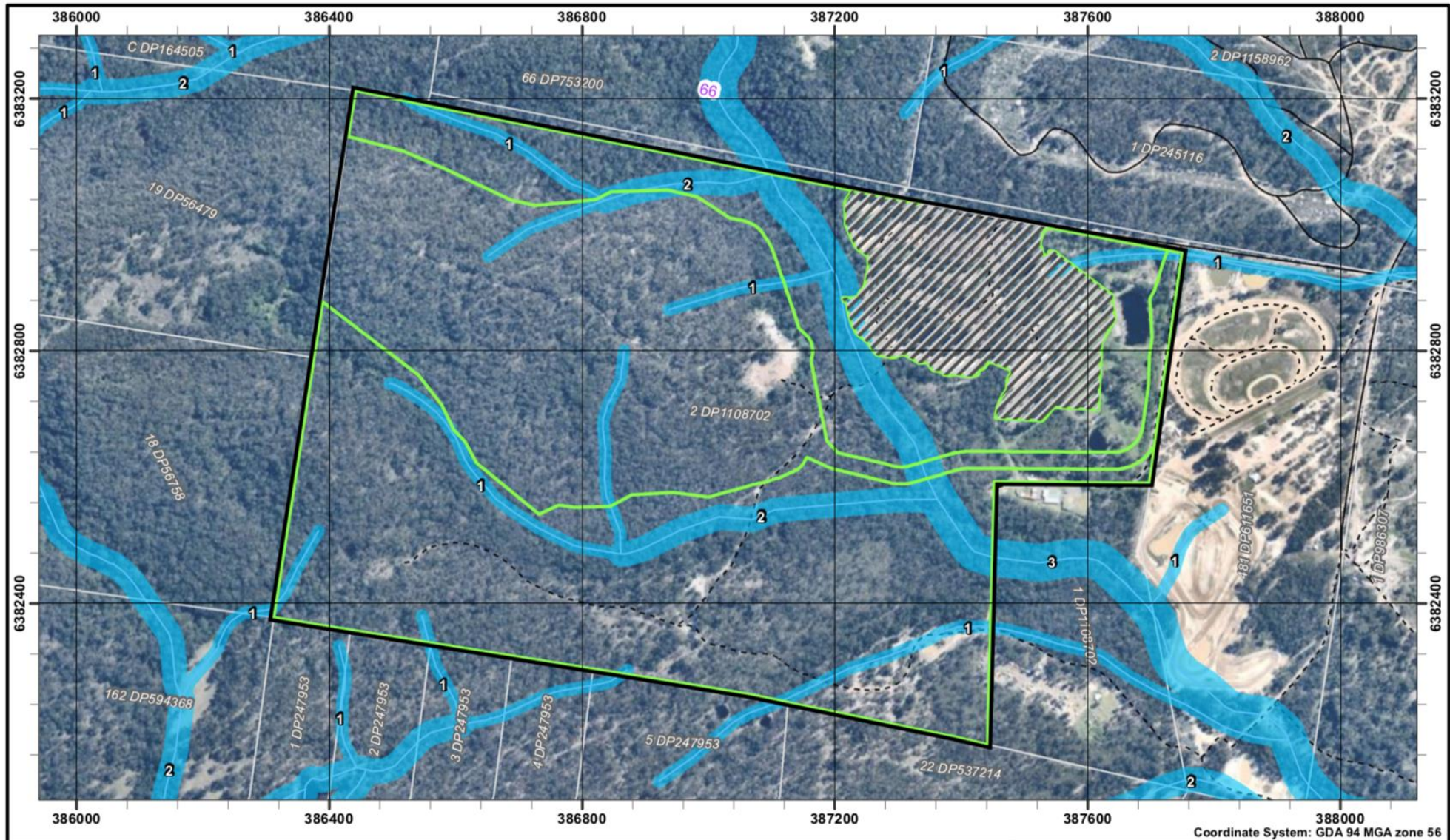
Figure:

3B

DRAWN BY: Kane Blundell
 DATE DRAWN: 06.02.2024

DATA SOURCE:
 © State of New South Wales (Spatial Services, a business unit of the Department of Customer Service NSW). For current information go to spatial.nsw.gov.au.

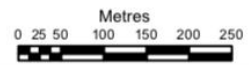
WARNING: The information included on this graphic representation has been compiled from a variety of sources and is subject to change without notice. Wedgetail Project Consulting makes no representations or warranties, express or implied, as to accuracy, completeness, timeliness or rights to the use of such information. This document is not intended for use as a final survey product nor is it designed or intended as a construction design document. The use or misuse of the information contained on this graphic representation is at the sole risk of the party using or misusing the information.



Coordinate System: GDA 94 MGA zone 56



- Study Area (100.94)
- Offset Site (57.2 ha)
- Gardenland (Excluded - 10.05 ha)
- Lot
- Riparian Buffers
- Local Road
- Track
- Mapped Rivers & Streams (labelled with stream order)

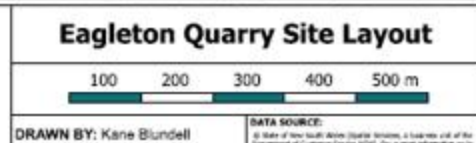
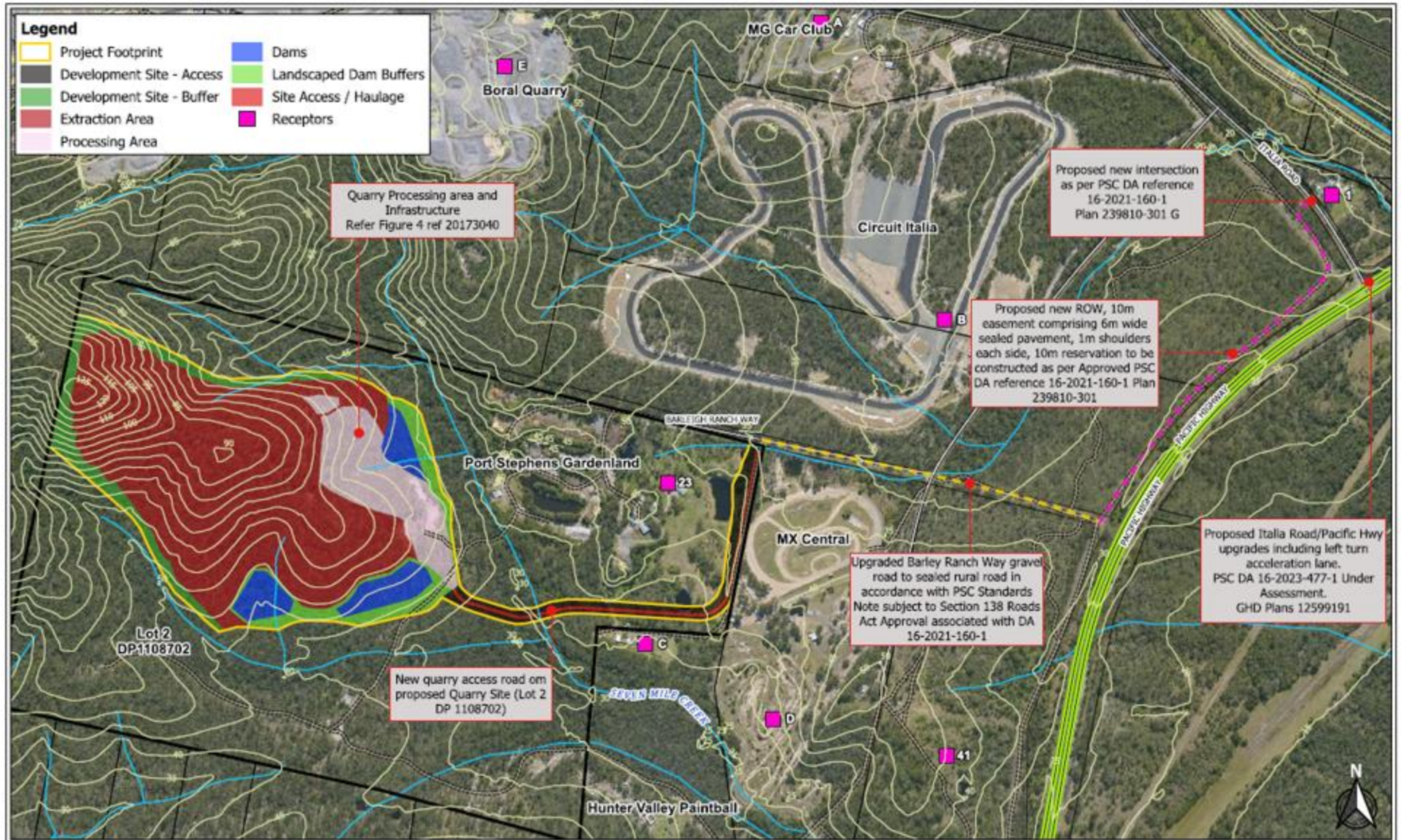


PROJECT REFERENCE: 20173040
 DATE DRAWN: 6/19/2017 12:27 Version 1
 DRAWN BY: bdeane
 DATA SOURCE:
 NSW Land and Property Information - 2017
 Nearmap - 2017

**Site Map -
Offset Site**

Eagleton Rock Syndicate Pty Ltd
 Biodiversity Assessment Report
 Eagleton Quarry
 13 Barleigh Ranch Way, Eagleton NSW

FIGURE:
2



Eagleton Rock Syndicate Pty Ltd
 Eagleton Quarry
 13 Barleigh Ranch Way, Eagleton NSW

Figure:
3A

Figure 2-1 | Site layout

Table 2-1 | Key aspects of the project

Component	Proposed development
Project life	30 years
Extraction method	Open cut extraction methods, including excavation, drill, blast, load and haul
Extraction depth	45 m AHD (Australian height datum)
Processing	On site crushing, screening and stockpiling
Quarry products	Hard rock aggregates
Production limit	600,00 tpa quarry products
Hard rock resource	Approximately 10 Million tonnes (Mt)
Disturbance	33 hectares (ha)
Operating hours	<ul style="list-style-type: none"> Extraction and processing operations: 7 am – 6 pm Monday to Friday and 7 am – 4 pm Saturday Loading and dispatch of quarry products: 5 am to 6 pm* Monday to Friday and 5 am to 4 pm Saturday Blasting: 9 am – 4 pm Monday to Friday Urgent unscheduled maintenance: 24 hours, 7 days per week No work on Sundays or public holidays (excluding urgent maintenance)
Product Transport	<ul style="list-style-type: none"> Up to 85 laden trucks per day (170 movements per day) Up to 10 laden trucks per hour (20 movements per hour)
Transport Route*	All trucks exiting quarry site along Italia Road use upgraded Italia Road/Pacific Highway intersection** and travel north on Pacific Highway. Southbound trucks then use the Pacific Highway/ Tarean Road interchange to perform a U-turn and head south on Pacific Highway
Project Access*	Right of carriageway connecting Barleigh Ranch Way with Italia Road**
Workforce	<ul style="list-style-type: none"> Approximately 10 employees and 10 specialist contractors during operation 20-25 full time haulage operators (at peak production)
Infrastructure	Crushing and screening plant, weighbridges, stockpiles, office and workshops, car parking
Rehabilitation	Rehabilitation to achieve a safe, stable, free-draining landform revegetated with native vegetation.

* Revised through Project amendments or additional information provided during the Department's assessment

**Approval for construction sought under a separate local development application through Port Stephens Council

Table 3-1 | Proposed, approved and operating SSD hard rock quarries within 25 km of the Project

Proposal / Project	Location	Production rate	Status
Hillview Quarry	Stroud	750,000 tpa over 20 years	Applicant preparing EIS
Seaham Quarry	Eagleton	2 Mtpa over 30 years	DA lodged, under assessment
Stone Ridge Quarry	Balickera	1.5 Mtpa over 30 years	DA lodged, under assessment
Karuah South Quarry	Karuah	600,000 tpa over 30 years	DA lodged, under assessment
Deep Creek Quarry	Allworth	500,000 tpa over 30 years	Approved in 2024, not yet operating
Brandy Hill Quarry	Brandy Hill	1.5 Mtpa until July 2050	Operating quarry approved in 2020
Karuah East Quarry	Karuah	1.5 Mtpa until December 2034	Operating quarry approved in 2014