

Broke Village Square



Some History and Perspective

Presentation to Independent Planning Commission
8th March 2022

Phil McNamara

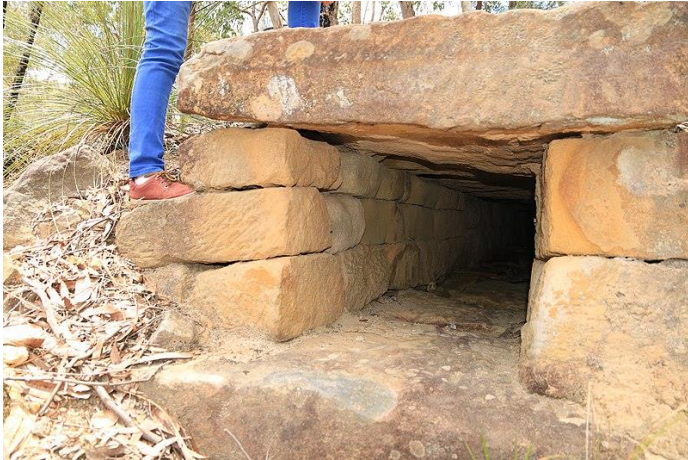
The Great North Road

- The Great North Road is an historic road that was built to link early Sydney, in the Colony of New South Wales, now Australia, with the fertile Hunter Valley to the north.
- Built by convicts between 1825 and 1836, it traverses over 260 km of the rugged terrain that hindered early agricultural expansion.
- The Great North Road commences at Paramatta Road, at what is now the Sydney suburb of Five Dock. Historically, it crossed the Paramatta River by boat at Abbotsford, after which passed through Ryde and Dural before reaching the Hawkesbury River at Wisemans Ferry 100 km to the north.
- It then winds through isolated and often rugged bushland along the edge of Dharug National Park, continuing through Bucketty until forking at Wollombi.
- From there one branch continues to Warkworth via **Broke** and the other goes to Cessnock, Maitland and on to Newcastle.

• Source : Wikipedia

The Great North Road

Images near Bucketty, South of Wollombi

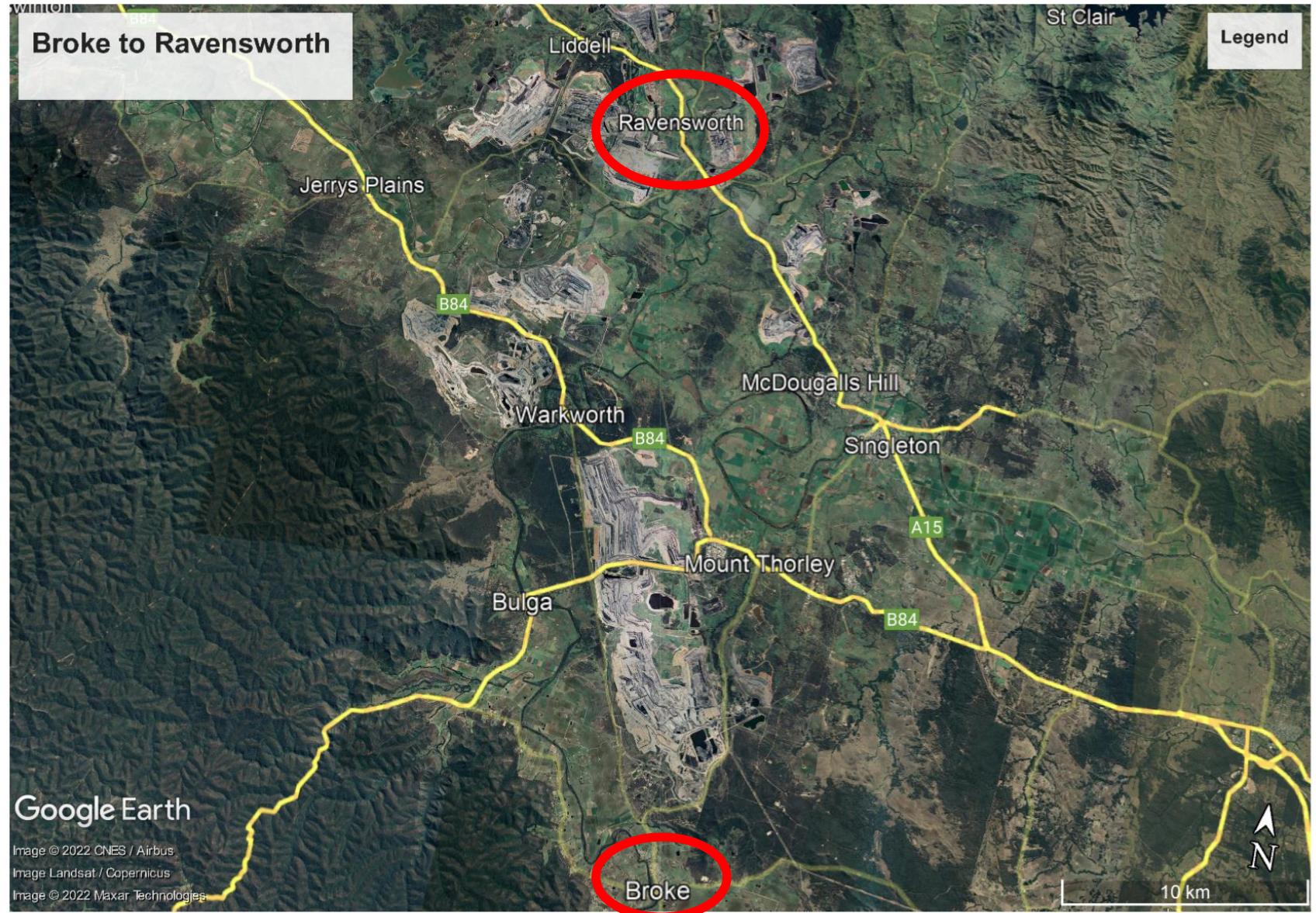


Memorial at Monkey Place Creek Bridge, Broke



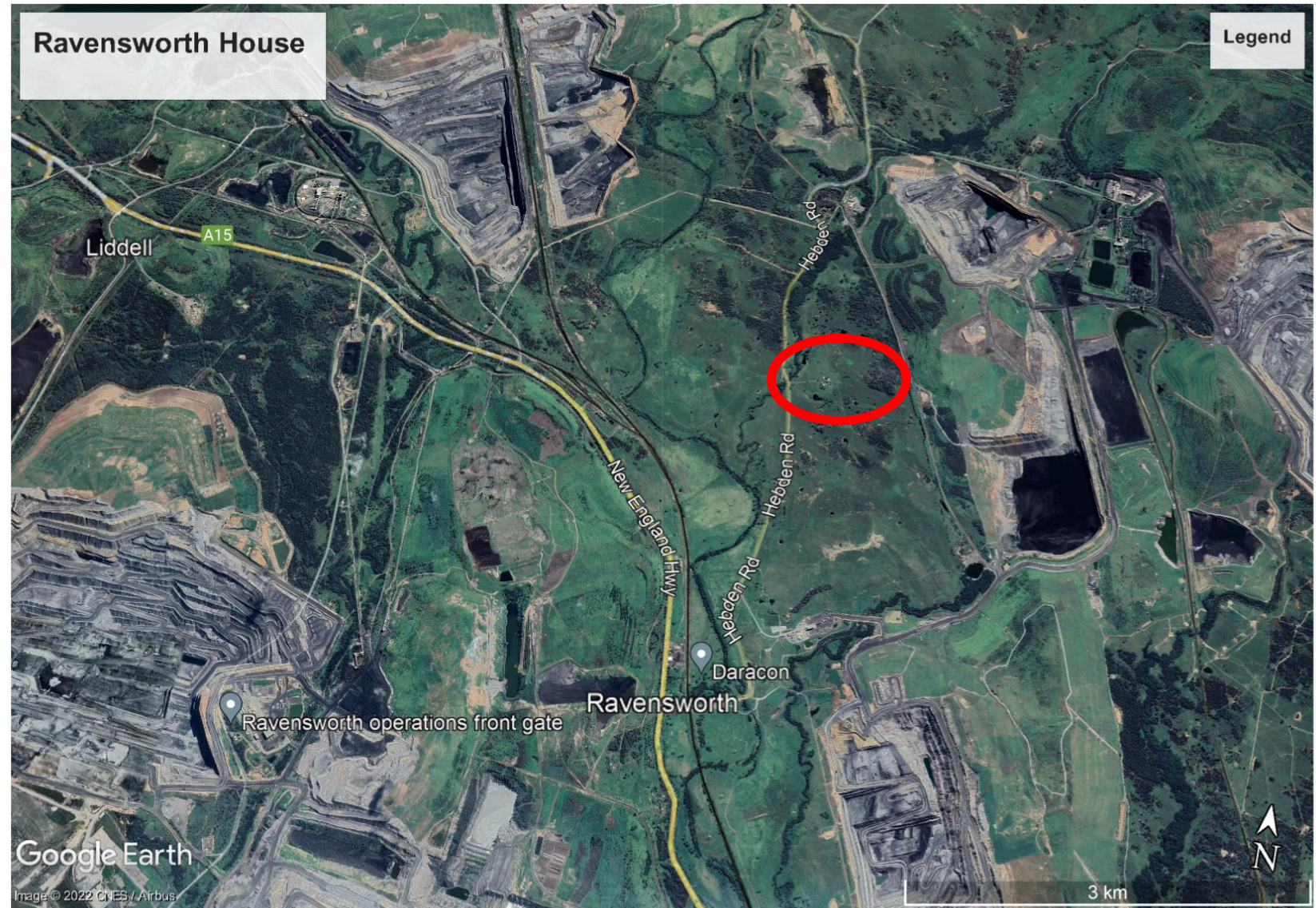
Broke to Ravensworth

- Broke and Ravensworth were linked via the North Road
- Bowman and others travelled through Broke from Sydney
- The Villages of Ravensworth and Warkworth are now gone along with others
 - Displaced by mining
- Broke survives as Geology deems it is outside the limit of an economic mining area



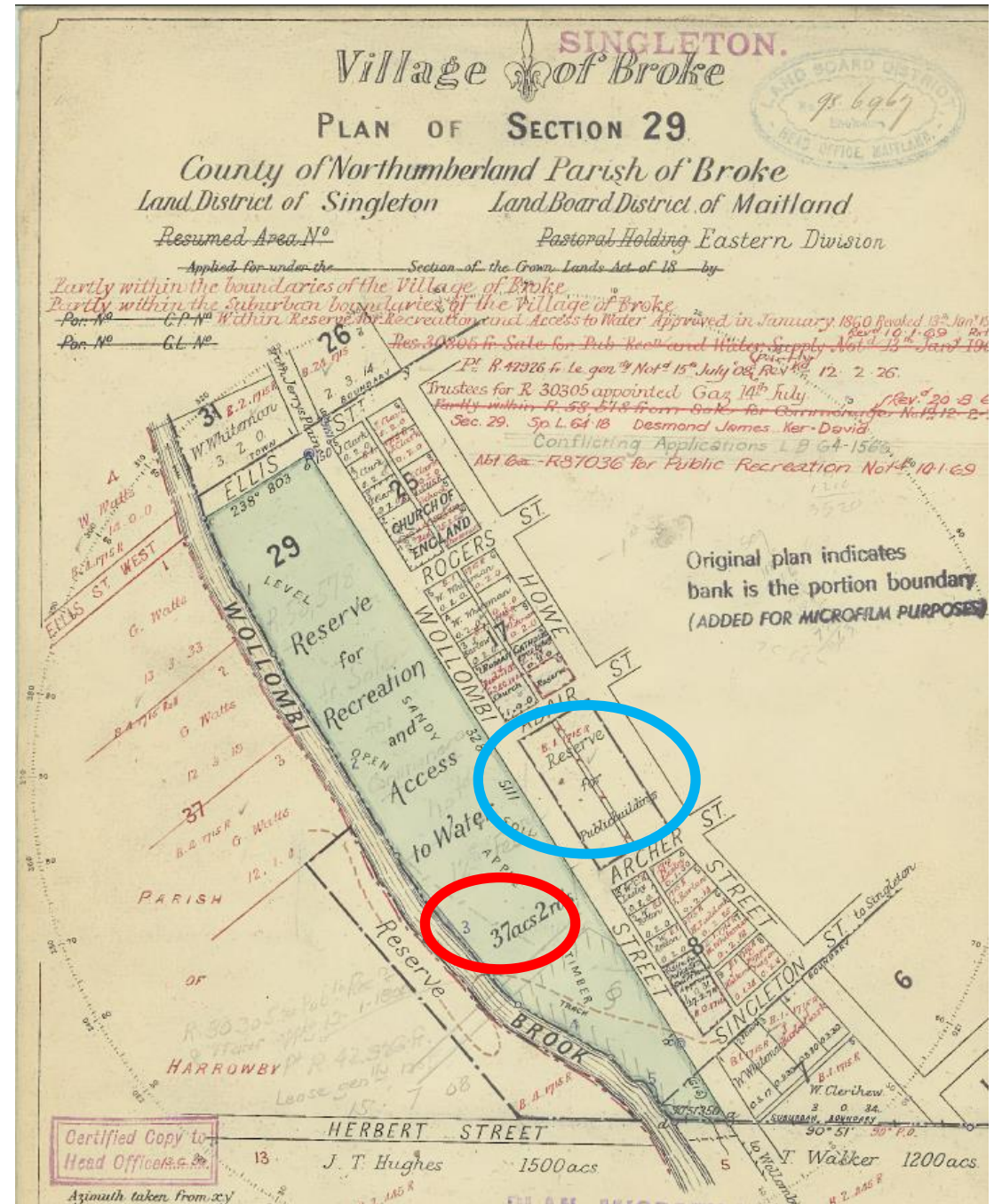
Ravensworth House

- Ravensworth House is surrounded by coal mines
- Local relocation on Ravensworth Farm will leave it that way.
- Where is the future value in that proposal
- Surely the community social and economic benefit of doing something clever with Ravensworth House must be considered.
- If left at Ravensworth the house will remain isolated as have others in the region.



Broke Village Plan 1859

- The proposed Broke Village Square site (Red) is located in what was laid out in the town plan as “Reserve for Recreation and Access to Water”
 - Currently used as a free campground
- Opposite the site was a Reserve for Public Buildings (Blue)
 - This reserve was old to private interests in 1970s and subdivide into house lots
- Broke lost it's site to potentially develop a Town Centre
- There exists now an opportunity to restore the heart of the village



Proposed Location Broke Village Square 2022

- Site is centrally located in the Village of Broke
- Adjacent to recently constructed skate park and childrens playground
- Local historic buildings include 2 x Churches, School and Jail House next to the Broke Village Store
- Corner location provides exposure to traffic in all directions
- Direct access to the Wollombi Brook
- Ideal location for a Town Centre



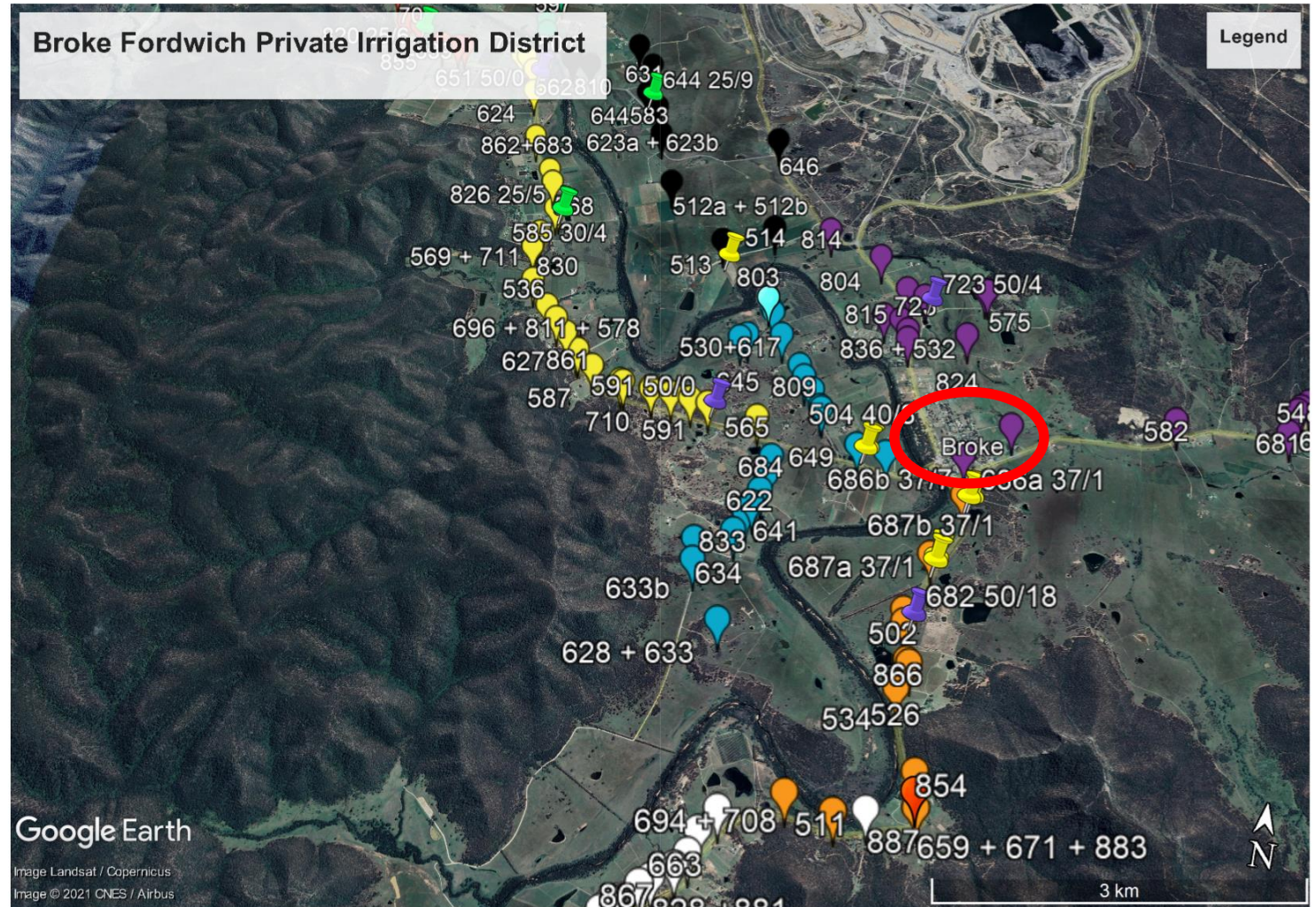
Proposed Location of Broke Village Square (2002)

- This image from 2002 shows the Wollombi Brook less congested with vegetation than today
- The white sand bed of the Wollombi Brook is evident
- A concrete causeway from the 1920s can be seen downstream of the low level bridge at Broke. It now acts as a small weir.
- With careful planning and clean up of the river vegetation the Broke Village Square can be developed to offer the public a unique and beautiful access to the Wollombi Brook



Broke is Thriving

- This image shows outlets of the Broke Fordwich Private Irrigation District
- There are more than 200 outlets
- The system extends from 10km south of Broke north to the villages of Milbrodale and then Bulga.
- This has drought proofed the area
- Permanent water supply underpins rural homes, gardens, agriculture and vineyards on otherwise dry land.
- Wine and Eco Tourism is flourishing



Proponents and Issues

- Glencore have supported the concept of Broke Village Square along with fund the costs of creating it in preparation of the Glendell Mine Extension EIS
- A local group led by Stewart Ewen have created the concept and championed the development
- There has been extensive public consultation in Broke.
- The site is on Crown Land managed by Singleton Council who will soon vote on support for the project.
- The Planning and Approval process should not be made complicated and embrace the use of the Land Reserve
- While Native Title exists it is not triggered unless property title is varied or land use significantly changes (Future Act)
- There are no existing valid Native Title Claimants
- Ravensworth Homestead:
 - can be left isolated at the mine
 - or relocated to Broke creating a spectacular benefit for all of the Community to use

