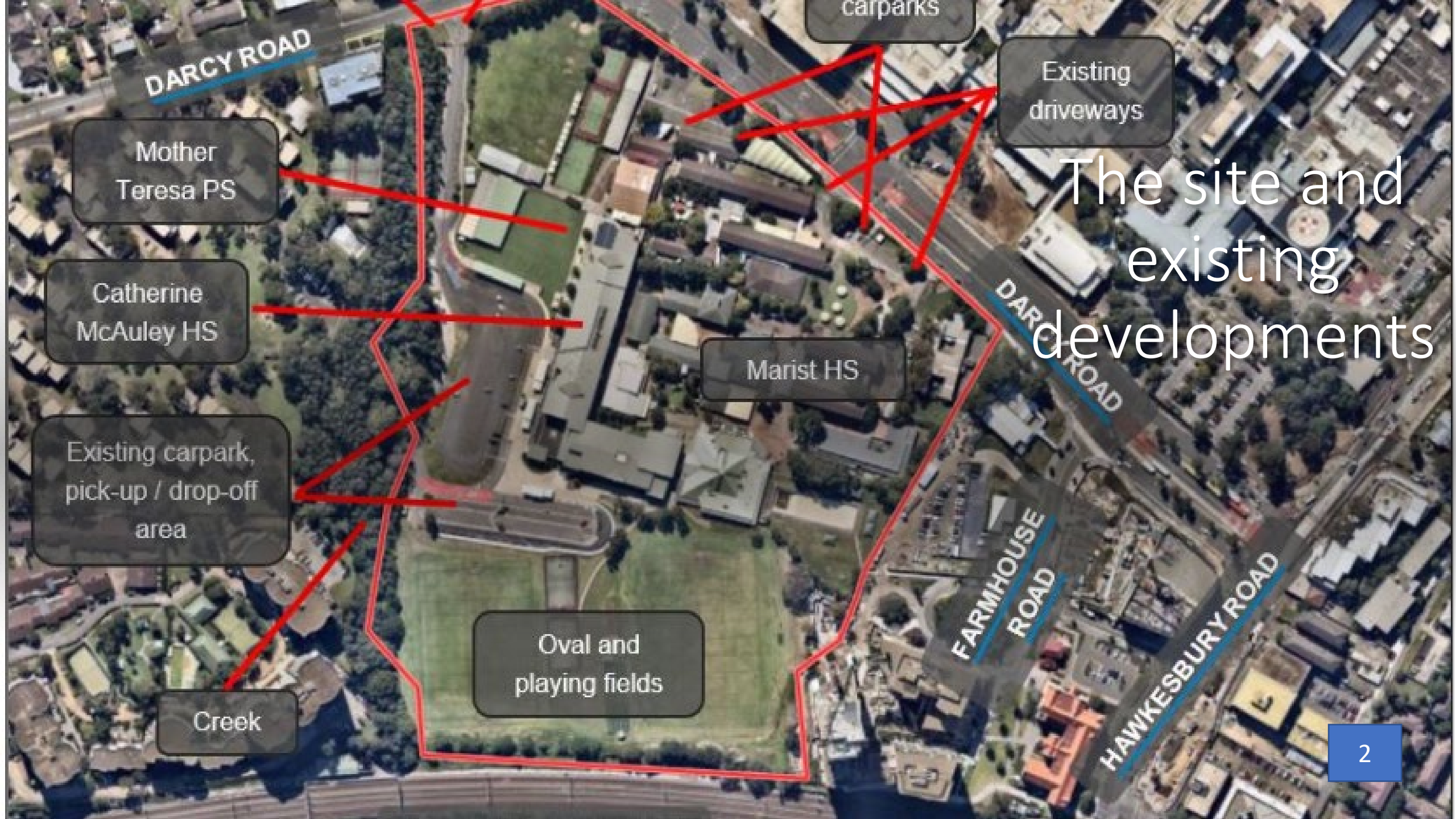




Westmead  
Catholic  
Community  
Campus  
redevelopment



DARCY ROAD

Mother Teresa PS

Catherine McAuley HS

Existing carpark, pick-up / drop-off area

Creek

Oval and playing fields

Marist HS

carparks

Existing driveways

DARCY ROAD

FARMHOUSE ROAD

HAWKESBURY ROAD

The site and existing developments

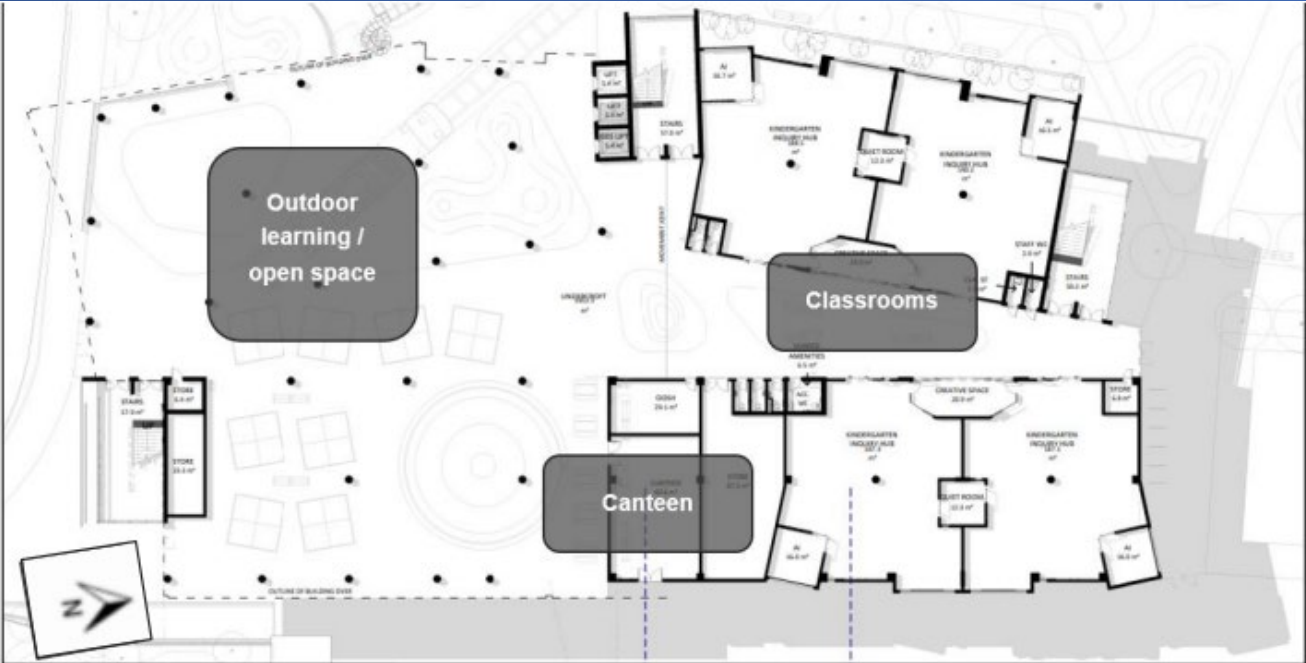




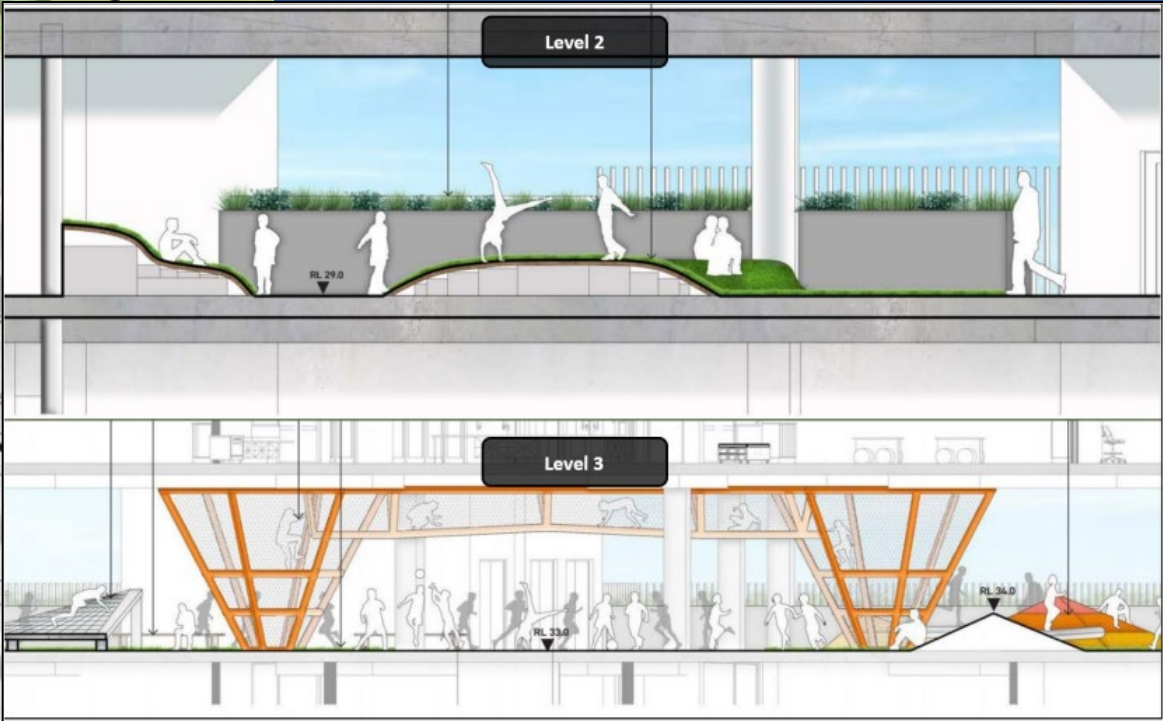
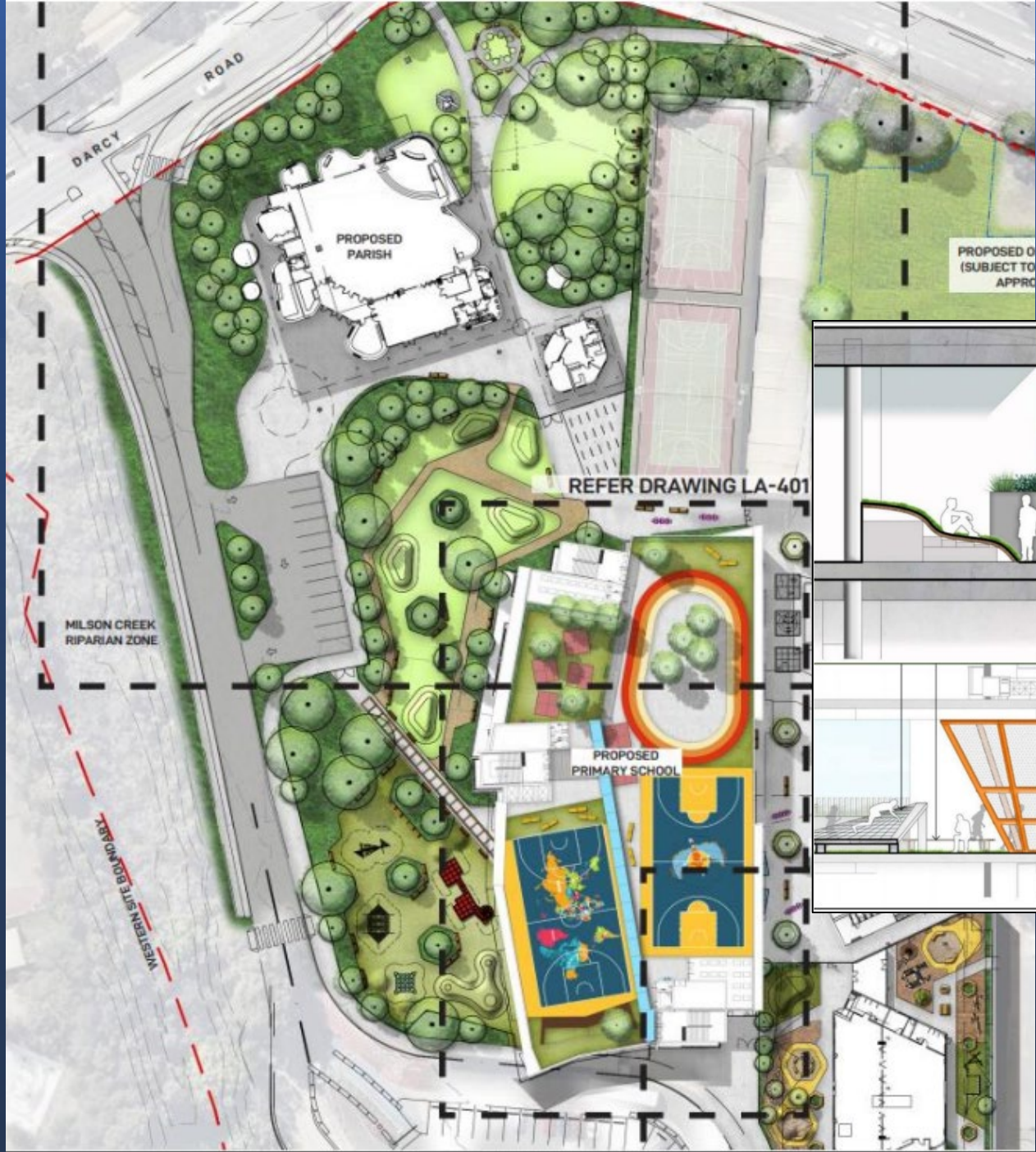












21 Jun 07:00



21 Jun 08:00



21 Jun 09:00



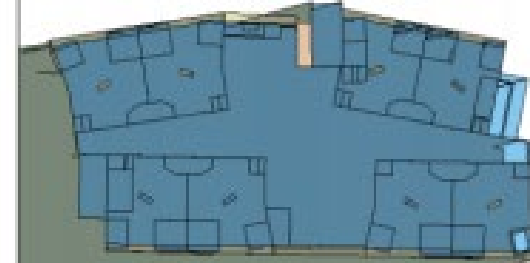
21 Jun 10:00



21 Jun 11:00



21 Jun 12:00



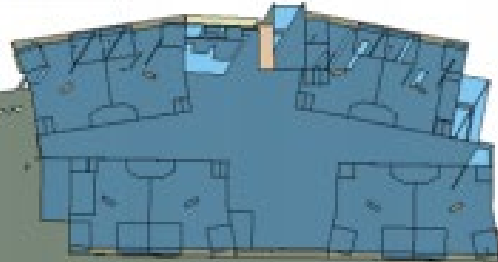
21 Jun 13:00



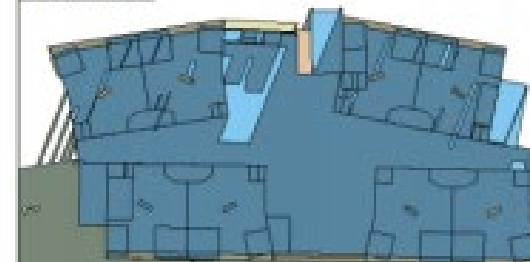
21 Jun 14:00



21 Jun 15:00



21 Jun 16:00



21 Jun 17:00







**84 SPACES - PRIMARY STUDENT BICYCLE PARKING**

WIRE CHAIN OR COLLAPSABLE BOLLARDS FOR CONTROLLED ACCESS TO PARISH DRIVEWAY AND PARKING

12 SPACES - PARISH CHURCH

END OF TRIP FACILITY FOR PRIMARY SCHOOL STAFF

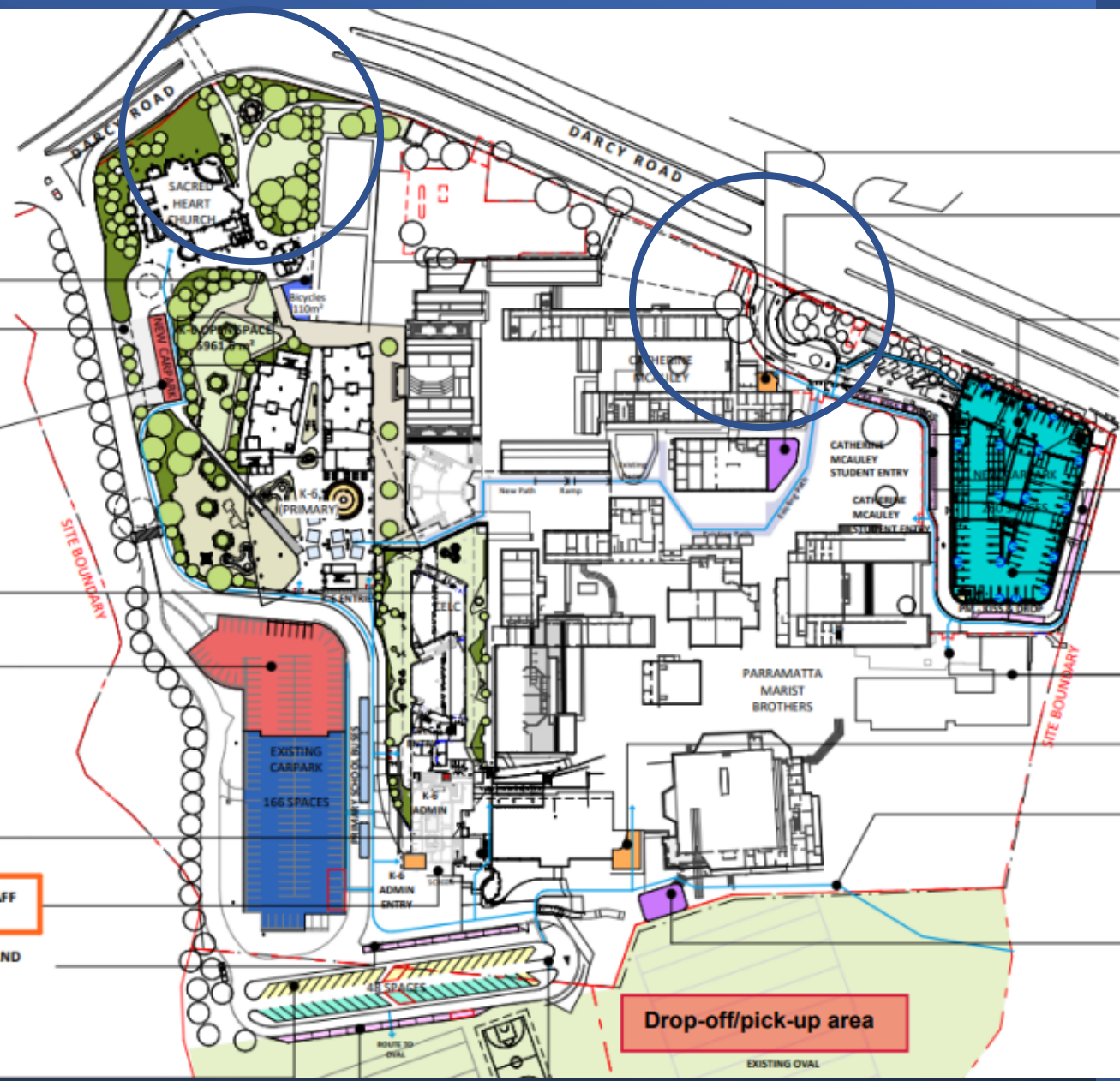
**PARKING ALLOCATIONS PER USE**  
 - 66 PARISH (INC. 2 ACC) + 1 SHARED  
 - 48 (INC. 1 ACC) PS STAFF  
 - 47 (INC. 1 ACC) PS VISITOR + 1 SHARED  
 - 3 REMAINDER SPACES (NON SPECIFIC USE)  
 - TOTAL = 166 SPACES

CATHERINE MCAULEY - STUDENT ENTRY (EXISTING)

**9 SPACES - PRIMARY AND HIGH SCHOOL STAFF BICYCLE PARKING WITH SCREENING**

9 SPACES - PRIMARY STUDENTS DROP OFF AND PICK UP ZONE K-Y2

12 CELC STAFF PARKING  
 12 CELC VISITOR PARKING



CATHERINE MCAULEY ADMIN ENTRY (EXISTING)

**60 SPACES - HIGH SCHOOL STUDENT & STAFF BICYCLE PARKING**

**PARKING ALLOCATION PER LEVEL**  
 - BASEMENT - 73 HS VISITORS + 1 SHARED  
 - GROUND - 73 HS STAFF  
 - LVL 1 - 113 REMAINING (NON USE-SPECIFIC)  
 - TOTAL = 260 SPACES

NEW 3 LEVEL CARPARK & SENIORS DROP OFF (SUBJECT TO SEPERATE APPROVAL)

21 SPACES - SENIOR STUDENTS DROP OFF AND PICK UP ZONE

**PARKING ALLOCATION PER USE**  
 - 73 HS STAFF (INC. 2 ACC)  
 - 73 HS VISITOR (INC. 2 ACC) + 1 SHARED  
 - 113 REMAIN (NON USE-SPECIFIC)  
 - TOTAL = 260 SPACES

PARRAMATTA MARIST STUDENT ENTRY

PARRAMATTA MARIST ADMIN ENTRY (EXISTING)

PEDESTRIAN ACCESS FROM FARMHOUSE ROAD

**56 SPACES - HIGH SCHOOL STUDENT BICYCLE PARKING**

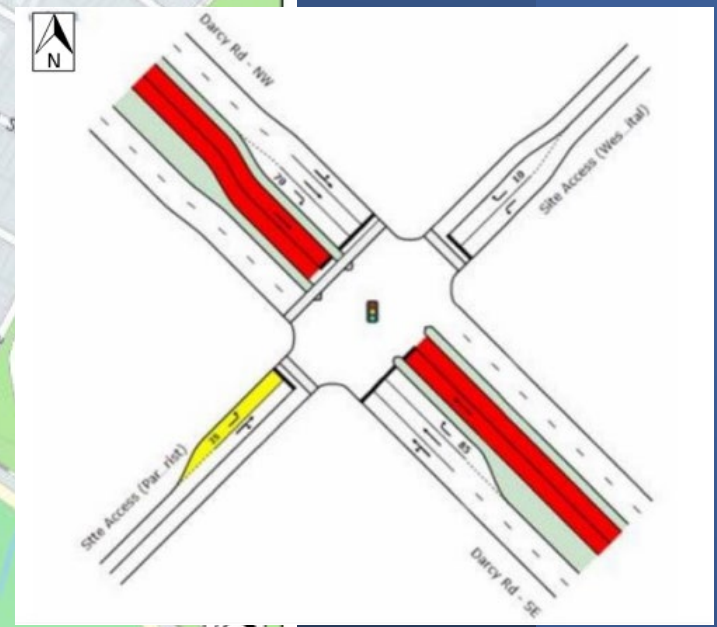
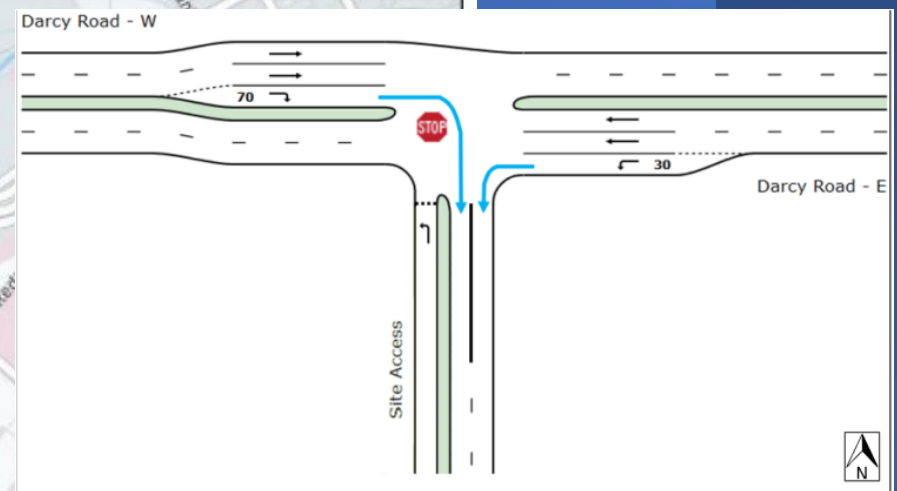
**Drop-off/pick-up area**

**SUMMARY OF BICYCLE PARKING**

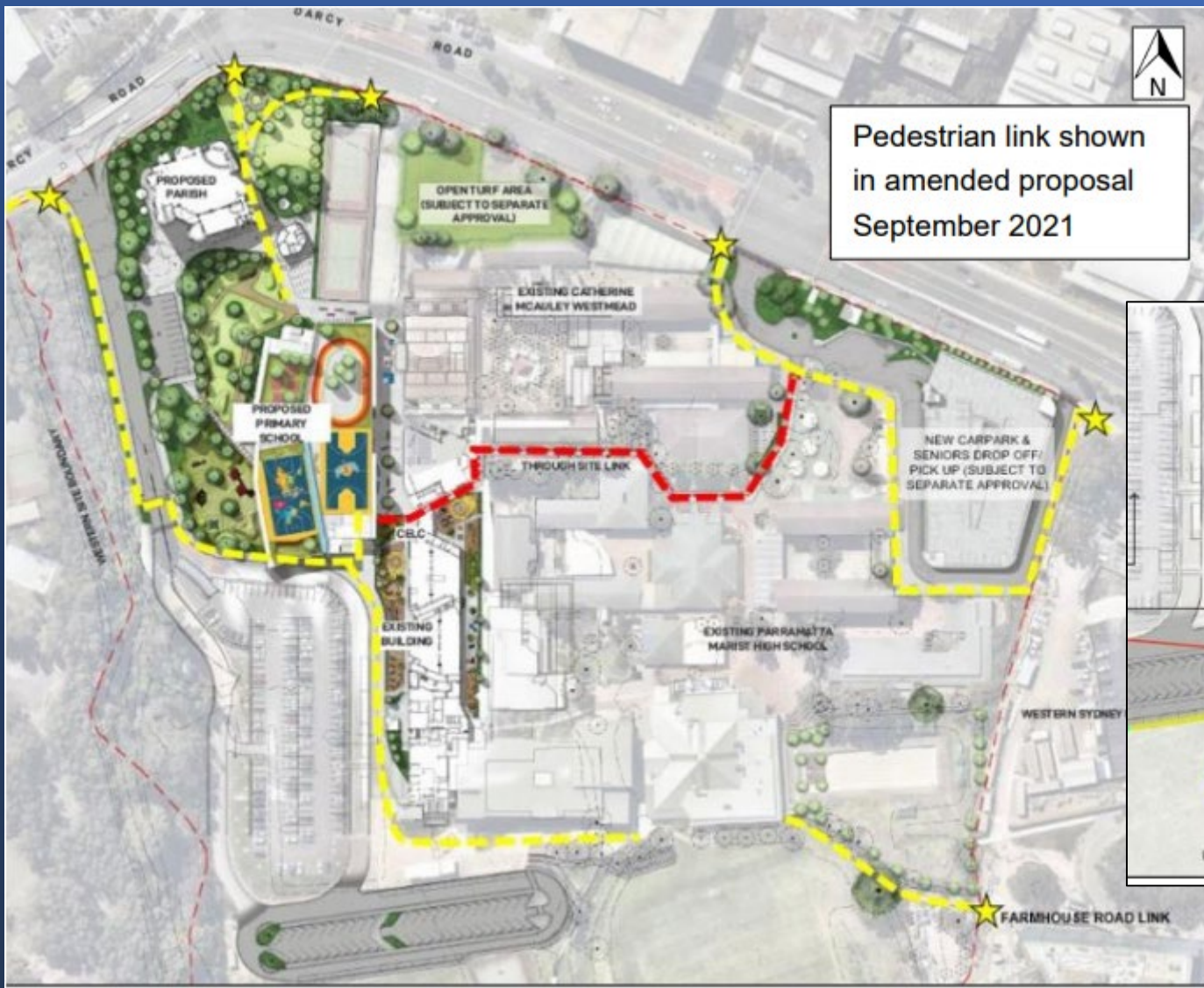




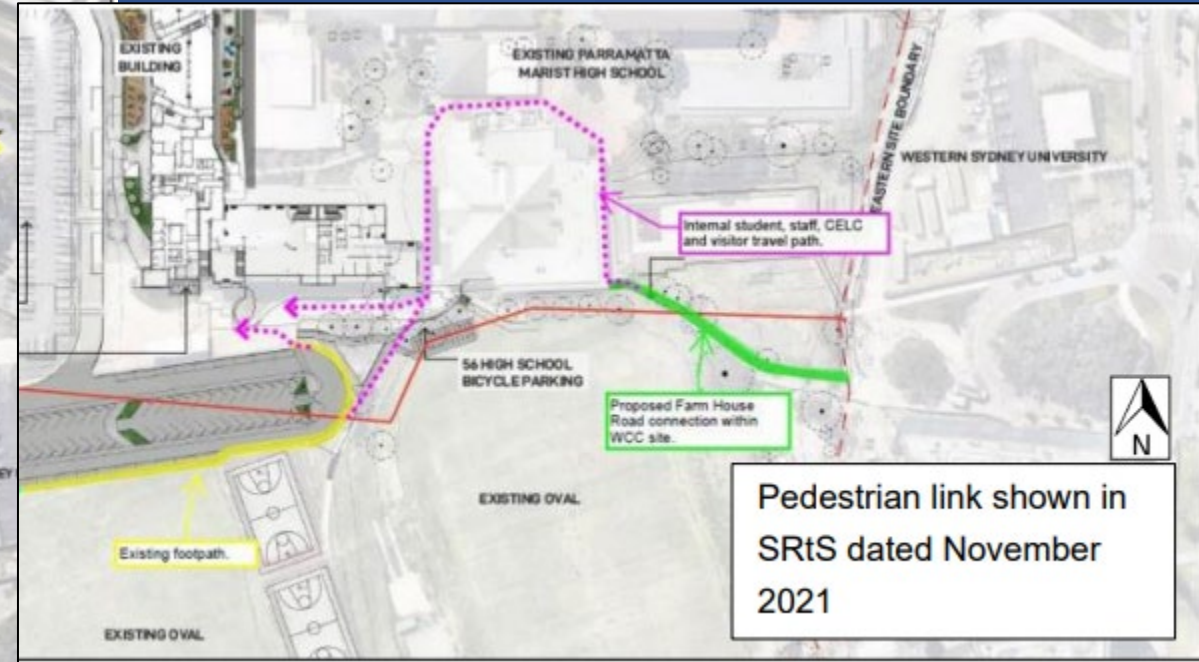
1. Hawkesbury Road / Alexandra Avenue
2. Hawkesbury Road / Railway Parade
3. Hawkesbury Road / Darcy Road
4. Darcy Road – UWS Car Park Access – Westmead Hospital Access
5. Darcy Road – Site Access (between both Westmead Hospital Access)
6. Darcy Road/multi-storey car park access (Catherine McAuley) / Westmead hospital
7. Darcy Road – Site Staff Car Park Access Catherine McAuley
8. Darcy Road / Mons Road / Institute Road
9. Darcy Road/Mother Teresa (site access)
10. Darcy Road / Bridge Road/Coles carpark
11. Alexandra Avenue / Bridge Road







Pedestrian link shown in amended proposal September 2021



Pedestrian link shown in SRtS dated November 2021





Westmead  
Catholic  
Community  
Campus  
redevelopment