



**SIMEC**

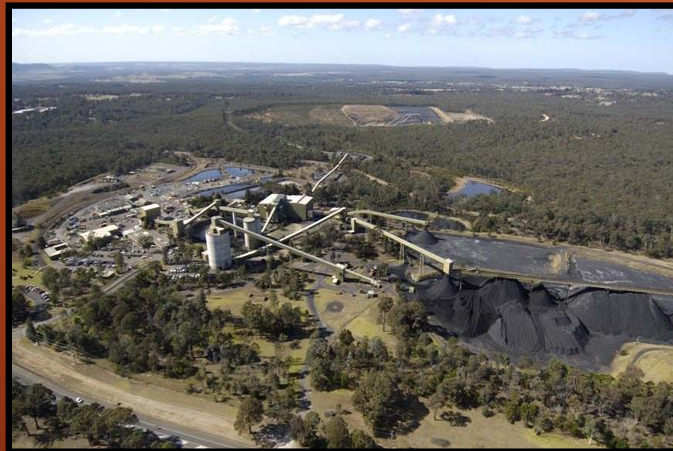
# TAHMOOR SOUTH PROJECT

## IPC PRIVATE BRIEFING

10 FEBRUARY 2021

SIMEC MINING

[simecgfg.com](http://simecgfg.com)



MEMBER OF





# Agenda

1. Tahmoor Coal and SIMEC GFG
2. Project evolution
3. Themes / Q&A
4. Discussion





SIMEC

## Tahmoor Coal and SIMEC

MEMBER OF





# SIMEC and GFG Alliance

- SIMEC is a member of the GFG Alliance, a collection of global businesses and investments.
- Purpose: to create a sustainable future for our industry and society.
- Ambition to be carbon neutral by 2030 and leading manufacturer of GREENSTEEL.
- Whyalla Transformation project has commenced.
- Tahmoor South Project bridges the gap.





# Tahmoor Coal

- Began more than 40 years ago. Purchased by GFG Alliance in 2018.
- One of the largest employers in the Wollondilly Shire.
- We produce hard coking coal for steel production. Product coal transported via rail to Port Kembla for domestic use and export sales.
- Around 400 employees, with 45% from the Wollondilly Shire.
- Approved operations to be complete in late 2022.
- Tahmoor South will provide a further 10 years of operations beyond 2022.
- We will bring our extensive experience to Tahmoor South.





SIMEC

## Project Evolution

MEMBER OF

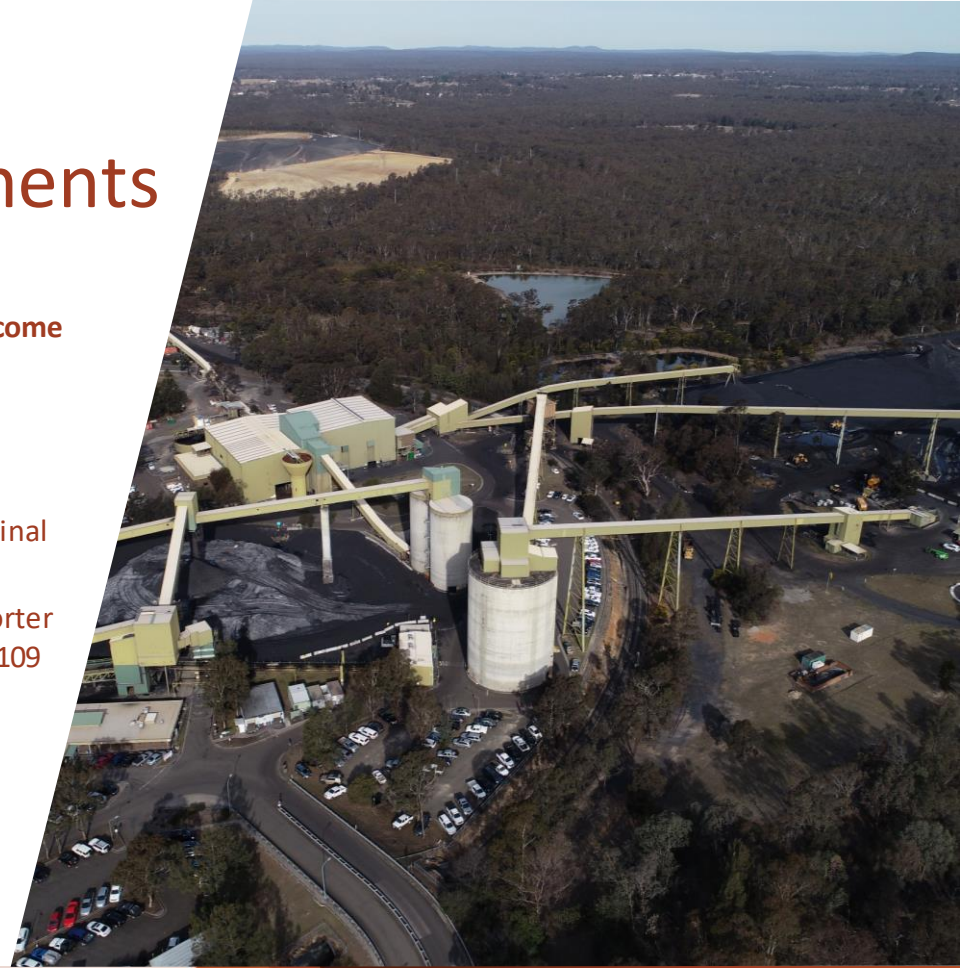




# Summary of project evolution & amendments

The project design for which approval is sought represents the outcome of numerous amendments made on the basis of community and government agency feedback and robust technical studies.

1. Mine plan
  - Shortening of LW blocks to avoid MSA & significant Aboriginal sites (102B) (*pre-EIS submission*).
  - Change in LW configuration & dimensions – 2 series of shorter panels, reduced width and extraction height, removed LW109 (*1<sup>st</sup> amendment*).
  - Removed LW107B and LW108B (*2<sup>nd</sup> amendment*).
2. REA design
  - Footprint extension completely avoided.
3. Ventilation shafts and transmission lines
  - Reduced footprint.



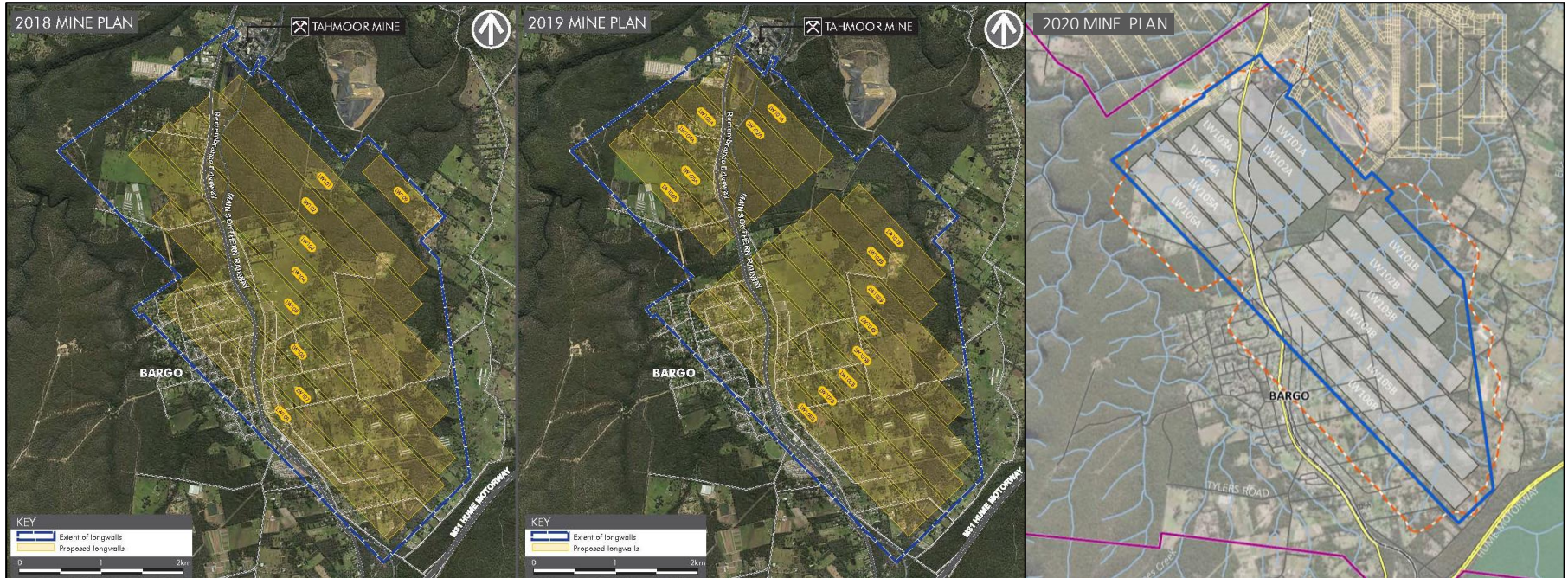
# Mine design evolution



EIS

First amendment

Second amendment





# Summary of key amendments



	EIS	1 <sup>st</sup> amendment	2 <sup>nd</sup> amendment
Total ROM	48Mt over 13 years	43Mt over 13 years	33Mt over 10 years
Coking Coal Product	35Mt	30Mt	23 Mt
Thermal Coal Product	3.5Mt	2Mt	1.4 Mt
Mine Layout	9 longwalls (LWs)	2 series of shorter LWs Removal of LW109	Removal of LW107B and 108B
Height of Extraction	Up to 2.85m	Up to 2.6m	No change - up to 2.6m
Longwall Width	Up to 305m	Up to 285m	No change - up to 285m
Houses to be mined under	751	571	143
REA extension footprint	43ha	11ha	No extension now proposed to avoid biodiversity impacts
Final height of REA	RL 305m	RL 310m	RL 320m
Benefit NSW (NPV)	\$699M	\$784M	\$664.9M
Benefit Wollondilly (NPV)	\$132M	\$162M	\$137.5M



SIMEC

Discussion

MEMBER OF

