



**NAME REDACTED**

**OBJECT**

Submission ID: 216847

Organisation: N/A	Key issues: <i>Social impacts, Visual impacts, design and landscaping, Land use compatibility (surrounding land uses), Traffic</i>
Location: <i>New South Wales 2577</i>	
Attachment: <i>Attached overleaf</i>	

Submission date: 11/21/2024 8:21:58 PM

*I do not agree with the analysis made in the Social Impact Assessment and believe the NSW Government has not done their due diligence in locating a site that is not close to residential and local communities.*

**Independent Planning Commission  
Suite 15.02, 135 King Street  
Sydney NSW 2000**

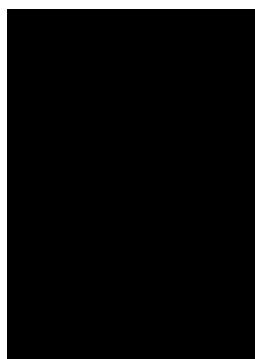
**State significant development: SSD-9409987  
Proposed Development: Plasrefine Recycling Pty Ltd  
Proposed site: 74-76 Beaconsfield Road, Moss Vale**

**ABSOLUTELY OPPOSE SSD-9409987**

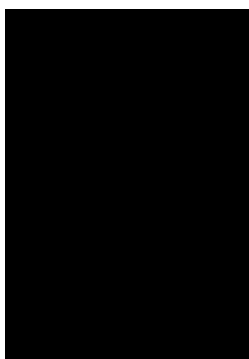
Dear Mr Andrew Mills,

My name is [REDACTED] and I'm a local resident of Moss Vale and oppose the development of a plastic recycling plant being built right in the heart of Moss Vale.

I've lived here most of my life, just recently graduated at Moss Vale High School with early entry to UOW and looking forward to studying my degree next year in Music and Business.



*St Paul's Primary School  
Moss Vale: Year Prep*



*Moss Vale High School:  
Year 12*

Both my parents work in the Highlands and did the big move from Sydney 14 years like many here in the Highlands - for greener, cleaner and a quieter lifestyle. We've been happy here and like most of my school mates, we want to stay and work here for our future.

Our family were shocked that a state significant development for a plastic recycling plant was planned to be built here in beautiful Moss Vale. We thought that everything would be ok, and it wouldn't go ahead with the council opposing as well as our local MP Wendy Tuckerman. These are the people we vote to be our voice for the community, and the NSW Government have decided to proceed with this - we as a community have been ignored.

My parents along with most here have now had to do further investigation into this project and share this information with us. We reviewed:

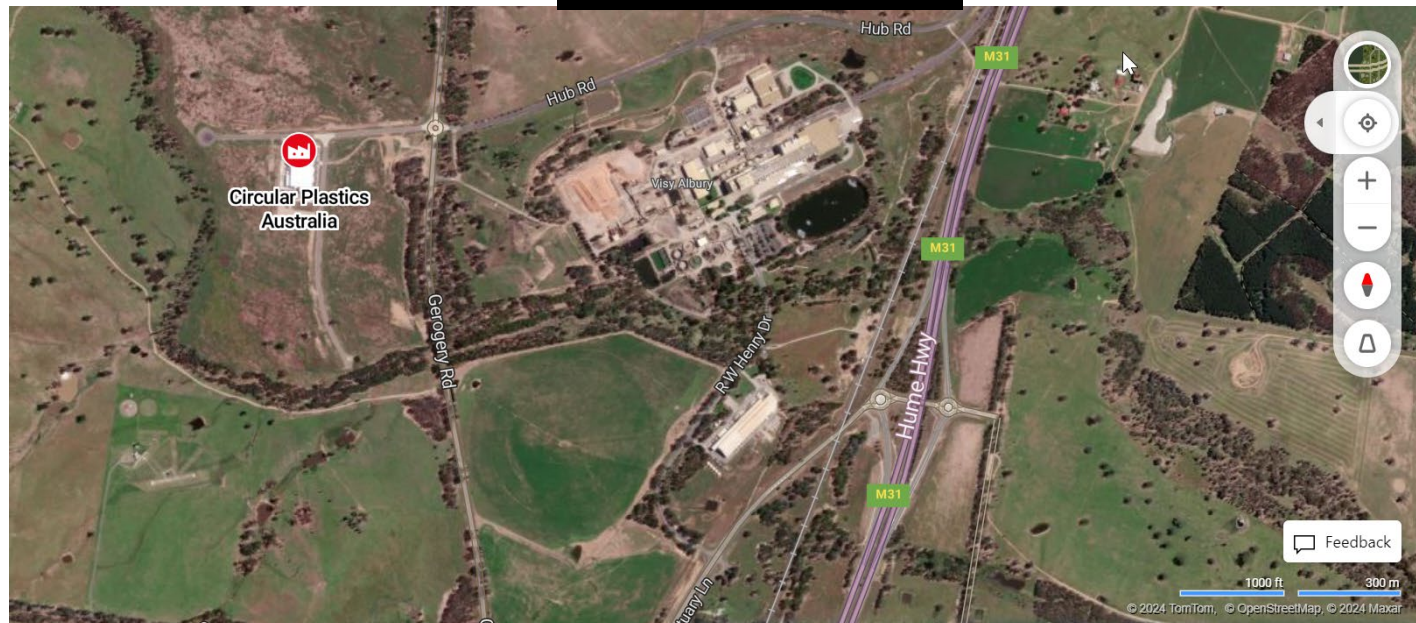
- Department of Planning, Housing and Infrastructure Sheelagh Laguna's meeting presentation that was completed in October 2024
- Social Impact Assessment completed on the 19<sup>th</sup> September 2023.
- 12524108-MEM-0 Questions on air quality

So disappointing to see Sheelagh Laguna's slide 14 on Social Impact, no reference to the Social Impact Assessment. Of the sample survey conducted of just 395 people page 123/124 of the Social Impact Assessment survey A.3 - **9 out of 10 people opposed and 77.13% absolutely opposed. Local issues had not been considered in the presentation.** Community engagement from Plasrefine and GHD prior to IPC was appalling with substandard analysis provided. There are still local people that know little or anything about this project.

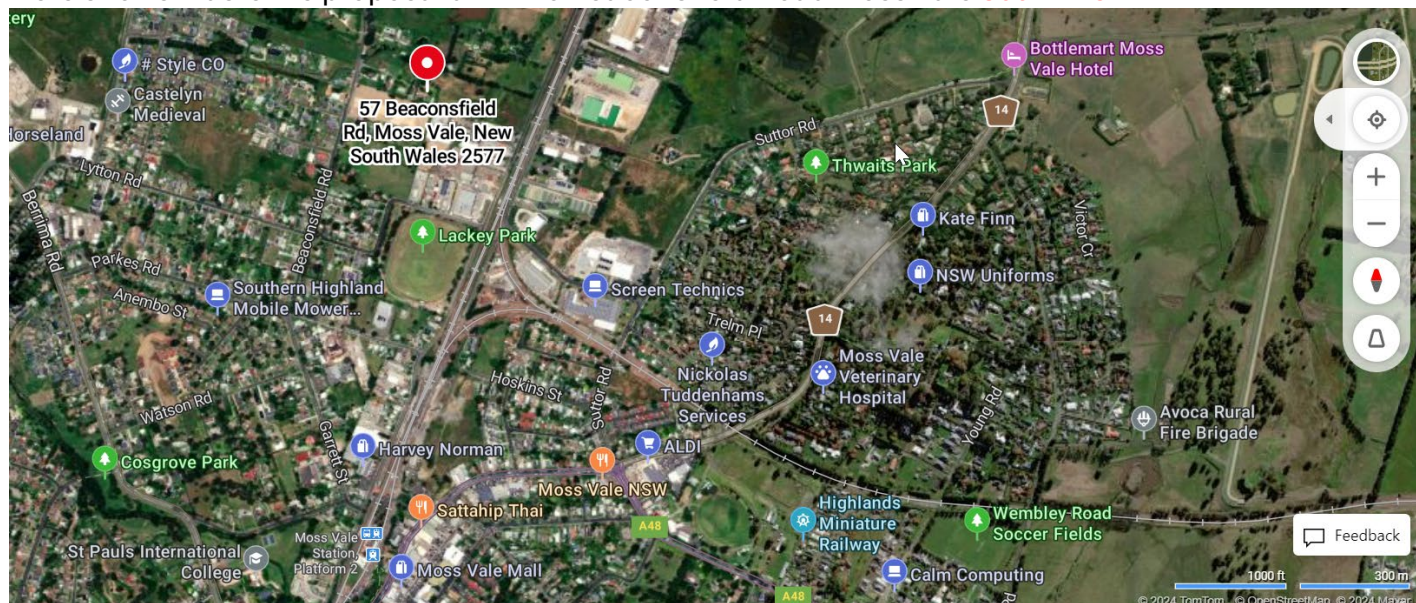
There are major concerns with this project with its proximity to residential homes and schools, for an SSD which will transport 120k tonnes of plastic to recycle in the heart of a town is incomprehensible. There are so many questions for all of us here, 3 major concerns:

- Distance from local towns/residents/schools - **what other sites were considered for this SSD**
- Carbon footprint for transporting – **why did they not look at the Cutler VC interchange areas**
- Water requirements – **why did they not look at this being closer to Kurnell desalination plant**

Here shows Circular Plastics Australia – [REDACTED] **300m view**



Here shows Plasrefine proposal at 74-76 Beaconsfield Road Moss Vale **300m view**



There are many red flags in the Social Impact Assessment:

Section 7 reference ABS 2021 census, data does not factor COVID change that has occurred in area and exponential growth that has occurred in the region and future projections not accurate.

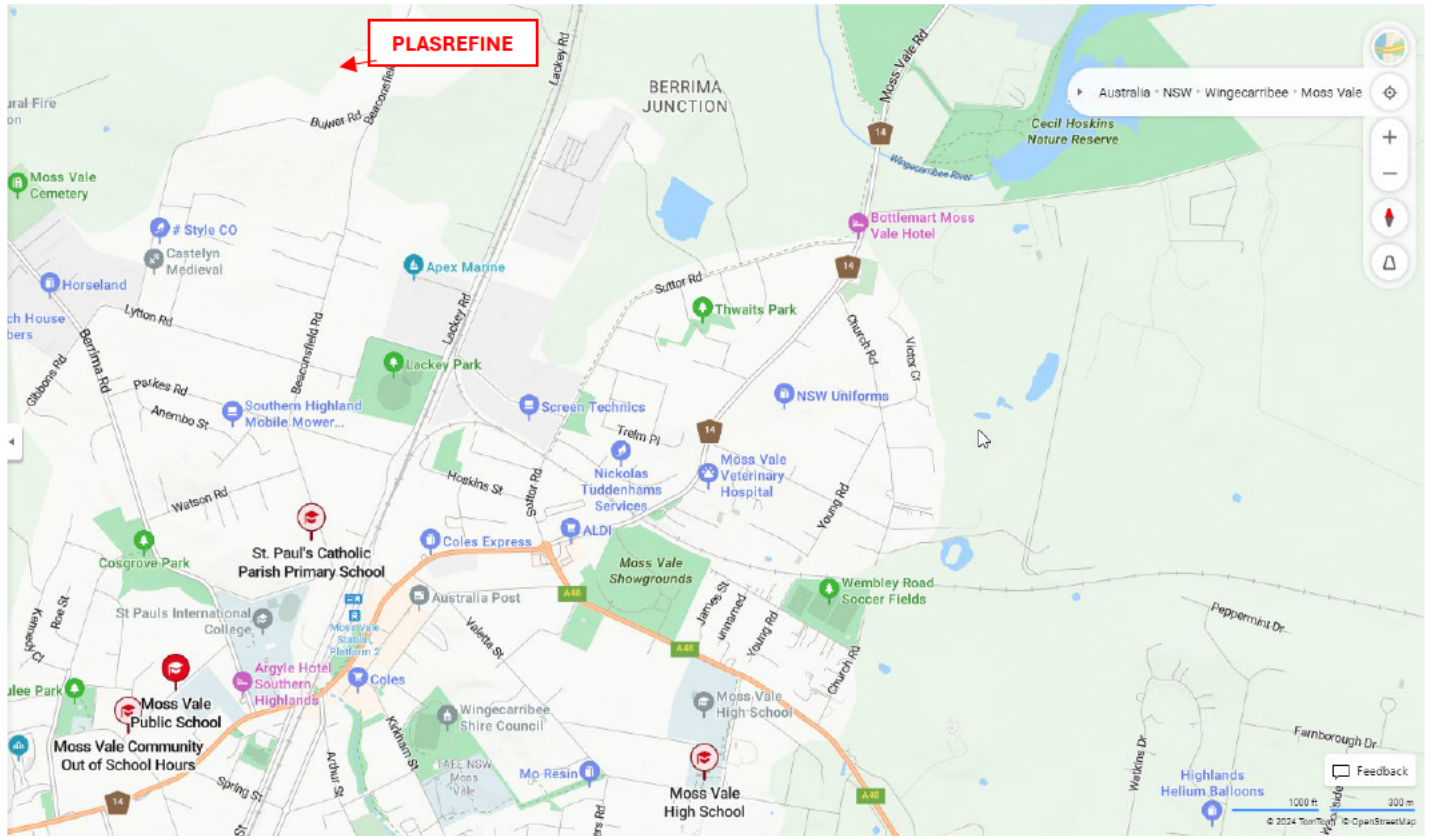
Section 10.4 Substandard responses on mitigation with “monitor” “ongoing”

Questions on air quality 12524108-MEM-0 with substandard answers (items 10,11,21,22)

There are no positive impacts to this project for Moss Vale or Wingecarribee

This project and reporting from GHD, Ethos Urban Pty Ltd and Department of Housing and Infrastructure has been written to side with the developer Plasrefine Recycling Pty Ltd.

# LOCAL SCHOOLS, SPORTING FACILITIES AND PLAYGROUNDS TO BE IMPACTED BY PLASREFINE



## SCHOOLS AND TERTIARY EDUCATION:

1. St Paul's Catholic Primary School, Moss Vale – 1.7 km APPROX 150 STUDENTS
2. Moss Vale Public School - 2.5 km APPROX 480 STUDENTS
3. St Paul's International High School – 2.5 km – APPROX 160 STUDENTS
4. UOW, Southern Highlands Campus – 2.6 km
5. Moss Vale TAFE – 2.7 km
6. Moss Vale High School – 2.9 km APPROX 740 STUDENTS
7. Oxley College 3.8 km
8. Kings School, Tudor House – 4.1 km
9. Chevalier College – 4.4 km

## EARLY CHILDHOOD:

1. Southern Highlands Early Childhood – 750m APPROX 46 CHILDREN
2. Wembley Road Preschool – 2.5km
3. KU Konkin Preschool – 2.3 km
4. KU Moss Vale Childcare – 2.7 km
5. Rainbow Moss Vale Kindy – 2.8 km

**THERE ARE 12 SPORTING FACILITIES AND PLAYGROUNDS WITHIN 3.6 km RANGE OF PLASREFINE, CLOSEST LACKEY PARK 1.2 km WHICH HOLDS THE LOCAL SCHOOL AND SPORT EVENTS.** *Provided by Susy Chin Southern Highlands*

# SOUTHERN HIGHLANDS WINERIES, BREWERIES & DISTILLERIES



## **FIRES AT AUSTRALIAN PLASTICS RECYCLING FACILITIES SINCE 2019:**

1. Close the Loop PTY Ltd. Melbourne - June 8, 2022 Fire at plastics recycling plant
2. Kilburn Plastic Recycling Fire - November 12, 2020 Fire at plastics recycling plant
3. Plastic Recycling Cambellfield - August 3, 2021 Fire at plastics recycling plant
4. Refresh Plastics Pty Ltd - February 8, 2023 Fire at plastics products plant that recycles plastic waste
5. SKM Recycling Melbourne - July 19, 2019 Fire at plastics products plant. This recycling facility has had multiple fires

## **FIRES AT AUSTRALIAN PLASTICS SORTING AND REPROCESSING FACILITIES SINCE 2019:**

1. Benedict Recycling Belrose – June 30, 2022 Major fire at waste recycling facility fuelled by plastic waste
2. Cleanaway Artarmon Resource Recovery Centre - December 5, 2022 Major fire at waste management facility fuelled by plastic waste
3. Cleanaway Bohle Solid Waste Services - October 28, 2021 Major fire at waste management facility with explosions on site
4. Australia: Cleanaway Brooklyn Resource Recovery Centre - January 24, 2021 Major fire at waste recycling facility fuelled by plastic waste
5. Australia: Cleanaway Kwinana Technical and Environmental Services - January 7, 2020 Major fire at waste recycling facility fuelled by plastic waste Fire and Emergency Services issued a hazardous substances alert
6. Australia: Cleanaway Perth MRF - November 25, 2019 Multiple fires at this facility
7. Australia: Cleanaway Rockdale Resource Recovery Centre - June 11, 2022 Major fire fuelled by stockpiled plastic waste destroys MRF
8. Australia: Instant Waste Management - September 8, 2021 Major fire at recycling facility fuelled by plastic waste
9. Australia: Kriaris Recyclables Processing (MRF) Kunwarara QLD - August 29, 2020 Plastic-fuelled fire at material recovery facility
10. Australia: SEQ Waste & Recycling – No date provided Fire at recycling facility fuelled by plastic waste
11. Ophir Road Resource Recovery Centre - February 18, 2023 Fire at recycling facility fuelled by plastic waste
12. Veolia Welshpool Resource Recovery Centre WA - March 1, 2023 Major fire at recycling facility fuelled by plastic waste Multiple fires at this facility
13. Re.Group - December 26, 2022 Major fire at recycling facility fuelled by plastic waste

NOTE: In the event of a fire, Plasrefine proposes to use local crews at Moss Vale, Bowral and Mittagong initially. Only Mittagong has a hazmat truck. If necessary, additional resources will come from Campbelltown and Wollongong OVER 45 minutes away, if they are ready and available.

We are ill equipped to deal with that kind of fire, which will undoubtedly require additional aerial support.

There have been over 70 fires in plastics recycling facilities, worldwide, since 2019.

These are alarming statistics. *Provided by Kennedy Bird, Southern Highlands NSW*

# PLASREFINE RISK TO SOUTHERN HIGHLANDS ENVIRONMENT AND HEALTH IMPACTS.

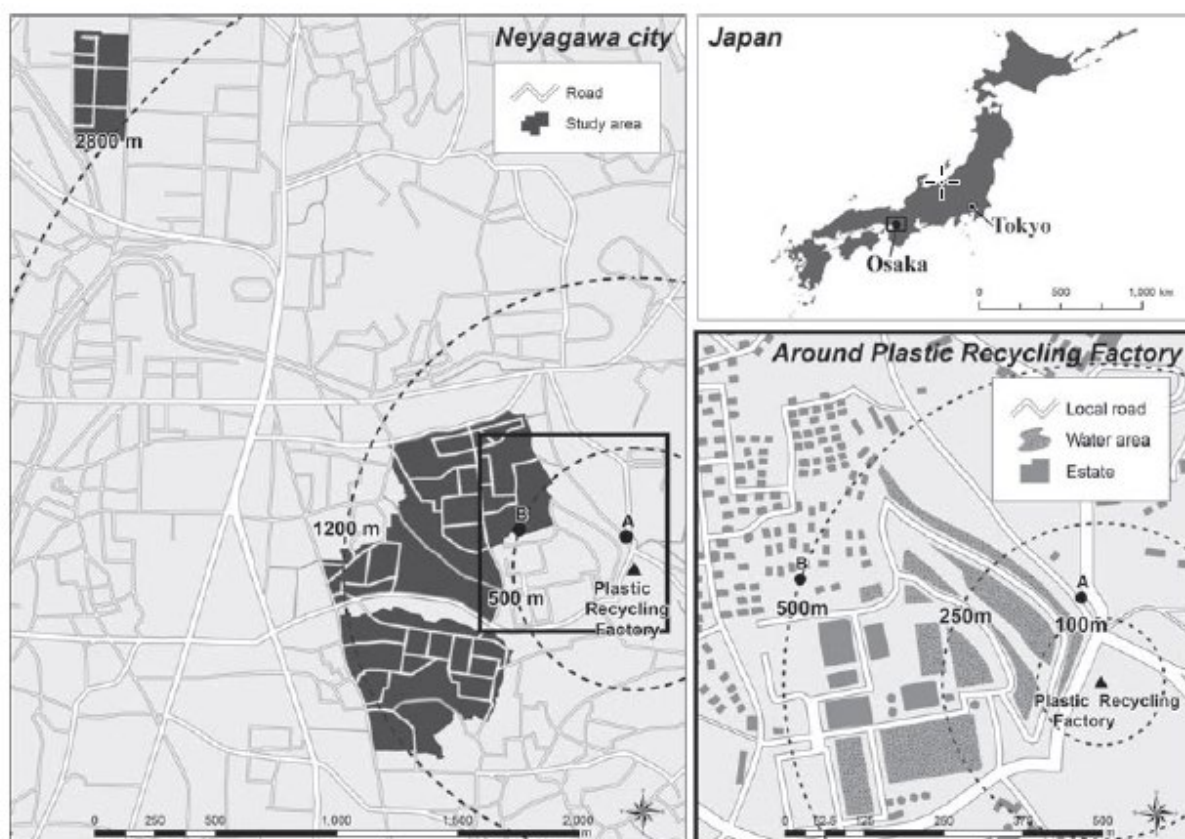
*J Occup Health* 2012; 54: 79–87

 **Journal of  
Occupational Health**

## Does Open-air Exposure to Volatile Organic Compounds near a Plastic Recycling Factory Cause Health Effects?

Takashi YORIFUJI<sup>1</sup>, Miyuki NOGUCHI<sup>2</sup>, Toshihide TSUDA<sup>1</sup>, Etsuji SUZUKI<sup>3</sup>,  
Soshi TAKAO<sup>3</sup>, Saori KASHIMA<sup>3,4</sup> and Yukio YANAGISAWA<sup>2</sup>

<sup>1</sup>Department of Human Ecology, Okayama University Graduate School of Environmental and Life Science, Japan, <sup>2</sup>Department of Environment Systems, Graduate School of Frontier Sciences, The University of Tokyo, Japan, <sup>3</sup>Department of Epidemiology, Okayama University Graduate School of Medicine, Dentistry and Pharmaceutical Sciences, Japan and <sup>4</sup>Department of public health and health policy, Hiroshima University Graduate School of Biomedical Sciences, Japan



**Fig. 1.** Map of the study areas. The map also shows the location of the plastic recycling factory and the measurement sites. The response rates among study areas were 97.5 (within 500 m from the factory), 82.6 (500–600 m), 84.5 (600–700 m), 81.2 (700–800 m), 69.8 (800–900 m), 63.1 (900–1,000 m), 63.0 (1,000–1,100 m), 50.3 (1,100–1,200 m), and 92.2% (2,800 m), respectively. The directions of the wind near the plastic recycling factory were not constant and considered to be randomly distributed (the directions were measured by the authors in January 2009).

## MATERIALS AND METHODS

### Study area

The city of Neyagawa is located in the northeastern area of Osaka, Japan (Fig. 1). The plastic recycling factory is located in the southeastern part of the city.

### THE FACTORY

**IN AUGUST 2004, THE FACTORY WAS CONSTRUCTED AND BEGAN TO OPERATE. SINCE APRIL 2006, THE FACTORY HAS OPERATED AROUND THE CLOCK, AT FULL CAPACITY, DEALING WITH 30 TONS OF PLASTICS A DAY. THE FACTORY USES THE RECYCLED PLASTIC TO MANUFACTURE PLASTIC PALETTES, AND ITS RECYCLING PROCESS INCLUDES THE STORAGE, DISMANTLING, VOLUME REDUCTION, HEATING AND MELTING OF PLASTICS.**

### Exposure assessment

The method of exposure assessment is described elsewhere<sup>12</sup>), and we briefly introduce it here. The concentrations of VOCs were measured at two locations: point A (about 100 m from the factory) and point B (500 m from the factory) as shown in Fig. 1.

Table 3. Prevalence proportions of symptoms in July 2005 and July 2006, separated by distance from the factory (n=3,950)

	Within 500 m (n=229)	500–600 m (n=338)	600–700 m (n=395)	700–800 m (n=611)	800–900 m (n=818)	900–1,000 m (n=727)	1,000–1,100 m (n=500)	1,100–1,200 m (n=267)	2,800 m (n=65)
July 2005									
Mucocutaneous symptoms									
Sore throat	12 (5.2)	24 (7.1)	27 (6.8)	48 (7.9)	52 (6.4)	61 (8.4)	38 (7.6)	23 (8.6)	4 (6.2)
Eye itch	27 (11.8)	56 (16.6)	75 (19.0)	117 (19.1)	131 (16.0)	113 (15.5)	74 (14.8)	50 (18.7)	10 (15.4)
Red-eye	20 (8.7)	33 (9.8)	38 (9.6)	55 (9.0)	52 (6.4)	60 (8.3)	41 (8.2)	23 (8.6)	4 (6.2)
Eye irritation	12 (5.2)	15 (4.4)	20 (5.1)	35 (5.7)	25 (3.1)	40 (5.5)	25 (5.0)	6 (2.2)	1 (1.5)
Eye discharge	24 (10.5)	32 (9.5)	26 (6.6)	52 (8.5)	58 (7.1)	60 (8.3)	39 (7.8)	29 (10.9)	5 (7.7)
Eczema	30 (13.1)	47 (13.9)	36 (9.1)	72 (11.8)	69 (8.4)	68 (9.4)	56 (11.2)	28 (10.5)	4 (6.2)
Respiratory symptoms									
Asthma attack	4 (1.7)	9 (2.7)	8 (2.0)	14 (2.3)	23 (2.8)	25 (3.4)	11 (2.2)	8 (3.0)	3 (4.6)
Cough	14 (6.1)	38 (11.2)	41 (10.4)	59 (9.7)	78 (9.5)	70 (9.6)	41 (8.2)	30 (11.2)	11 (16.9)
Sputum	21 (9.2)	43 (12.7)	50 (12.7)	75 (12.3)	91 (11.1)	84 (11.6)	47 (9.4)	39 (14.6)	10 (15.4)
Rhinorrhea	32 (14.0)	65 (19.2)	66 (16.7)	118 (19.3)	157 (19.2)	135 (18.6)	87 (17.4)	52 (19.5)	12 (18.5)
Other symptoms									
Muscle stiffness	6 (2.6)	18 (5.3)	21 (5.3)	35 (5.7)	27 (3.3)	31 (4.3)	36 (7.2)	16 (6.0)	6 (9.2)
Constipation	28 (12.2)	49 (14.5)	42 (10.6)	89 (14.6)	111 (13.6)	96 (13.2)	80 (16.0)	28 (10.5)	11 (16.9)
July 2006									
Mucocutaneous symptoms									
Sore throat	57 (24.9)	87 (26.5)	84 (21.9)	121 (20.2)	150 (19.2)	159 (22.6)	85 (18.0)	59 (24.1)	7 (10.9)
Eye itch	96 (41.9)	156 (46.7)	165 (43.0)	228 (37.9)	292 (37.2)	260 (36.4)	170 (35.6)	102 (40.2)	16 (25.4)
Red-eye	69 (30.1)	85 (25.8)	63 (16.6)	106 (17.7)	116 (14.9)	114 (16.4)	78 (16.6)	57 (23.2)	8 (12.9)
Eye irritation	41 (17.9)	68 (20.8)	61 (16.0)	84 (14.1)	97 (12.5)	111 (15.9)	64 (13.6)	32 (13.0)	3 (4.8)
Eye discharge	64 (27.9)	88 (26.7)	77 (20.0)	99 (16.6)	159 (20.5)	138 (19.7)	94 (19.8)	67 (27.0)	6 (9.5)
Eczema	55 (24.0)	87 (26.4)	69 (18.1)	103 (17.3)	128 (16.4)	132 (19.0)	96 (20.2)	58 (23.6)	5 (8.2)
Respiratory symptoms									
Asthma attack	6 (2.6)	15 (4.6)	11 (2.9)	24 (4.1)	34 (4.4)	36 (5.2)	15 (3.2)	15 (6.2)	2 (3.2)
Cough	65 (28.4)	123 (37.0)	118 (30.8)	155 (26.0)	200 (25.5)	185 (26.4)	123 (26.1)	72 (29.3)	15 (23.4)
Sputum	63 (27.5)	111 (33.8)	98 (25.7)	137 (23.4)	205 (26.1)	183 (26.1)	96 (20.4)	74 (30.2)	12 (19.0)
Rhinorrhea	81 (35.5)	157 (47.9)	147 (38.2)	216 (36.0)	284 (36.4)	262 (37.5)	163 (34.9)	103 (41.7)	19 (30.6)
Other symptoms									
Muscle stiffness	18 (7.9)	40 (12.2)	41 (10.8)	63 (10.6)	65 (8.4)	70 (10.1)	70 (14.8)	34 (13.8)	9 (14.5)
Constipation	31 (13.5)	69 (20.9)	64 (16.7)	113 (19.0)	142 (18.2)	116 (16.7)	98 (20.5)	38 (15.4)	11 (17.5)



# The Minderoo-Monaco Commission on Plastics and Human Health

ORIGINAL RESEARCH

PHILIP J. LANDRIGAN   
HERVÉ RAPS   
MAUREEN CROPPER  
CAROLINE BALD   
MANUEL BRUNNER  
ELVIA MAYA  
CANONIZADO  
DOMINIC CHARLES

MARK E. HAHN   
BUDI HARYANTO   
RICHARD HIXSON   
HANNAH IANELLI   
BRYAN D. JAMES   
PUSHPAM KUMAR  
AMALIA LABORDE   
KARA LAVENDER LAW 

JORDAN AVERY PITT  
MATHUROS  
RUCHIRAWAT  
BHEDITA JAYA  
SEEWOO   
MARGARET SPRING   
JOHN J. STEGEMAN   
WILLIAM SUK   
CHRISTOS SYMEONIDES

Ju[ubiquity press

CORRESPONDING AUTHOR:

Philip J. Landrigan, MD, MSc

Global Observatory on Planetary  
Health, Boston College,  
Chestnut Hill, MA, US; Centre  
Scientifique de Monaco, Medical  
Biology Department, MC  
landrigp@bc.edu

## Recycling page 30 of the report

### *Mechanical, physical, and chemical recycling technologies*

Several technologies have been developed for recycling plastics and include both mechanical and chemical technologies. Plastic waste is also burned in waste-to-energy facilities, euphemistically termed *thermal recycling* or *pyrolysis*, to produce heat or energy [321].

**PLASTIC RECYCLING PROCESSES MAY HAVE NEGATIVE ENVIRONMENTAL IMPACTS, SUCH AS THE GENERATION OF AIR POLLUTION AND TOXIC ASH [322]. EXPOSURES TO THESE WASTE PRODUCTS ARE ASSOCIATED WITH HEALTH IMPACTS IN RECYCLING WORKERS AND IN RESIDENTS OF NEARBY “FENCELINE” COMMUNITIES [323].**

### Mechanical recycling

Mechanical recycling is a process in which plastic waste is sorted by polymer, shredded, washed, and melted into plastic granulates. This process is suited for thermoplastic materials (e.g., PET, PE, PP, PVC) but generally cannot be applied for thermosets like epoxy resins and most PURs.<sup>31</sup>

Mechanical recycling can be divided into closed-loop or open-loop recycling [324]. Today, closed-loop mechanical recycling is largely limited to PET bottles (bottle-to-bottle) in waste systems where the bottles are collected in a separate waste stream. The majority of mechanical recycling is an open-loop process in which the resulting plastic granulate is of lower quality than the input material. Multiple factors contribute to the lower quality of plastic recycled via this technique. They include polymer degradation during extrusion, cross-contamination with undesired polymers, incomplete removal of odours and colorants, and unknown additive composition—notably the potential inclusion of toxic additives—in the final granulate used for product manufacture. As a result, most mechanically recycled plastics do not meet standards for such uses as food contact materials, which means the plastic is downcycled to products with lower specifications [322]. To overcome the poorer material properties of recycled plastic, mechanical recycling often involves enrichment with additives or virgin polymer.

Depending on the plastic type, melting during the extrusion process can emit toxic chemicals into the workplace air, including VOCs (e.g., vinyl chloride, styrene, formaldehyde, benzene) and PAHs [325, 326].

**MELTING PLASTIC PELLETS RECYCLED FROM WASTE PLASTIC RELEASES ADDITIVES SUCH AS PHTHALATES AND VOCs IN CONSIDERABLY HIGHER QUANTITIES THAN ARE RELEASED FROM MELTING VIRGIN PLASTIC PELLETS [327]. THESE TOXIC CHEMICALS ARE ALSO BEING RELEASED DURING THE GRANULATION STEP OF MECHANICAL RECYCLING [328]. WORKERS EMPLOYED IN MECHANICAL RECYCLING OPERATIONS CAN BE DIRECTLY EXPOSED TO CARCINOGENIC METAL(LOID)S SUCH AS ARSENIC, CADMIUM, AND CHROMIUM PRESENT IN RECYCLED PLASTIC PELLETS VIA SKIN CONTACT AND THROUGH INHALATION OF CONTAMINATED AIRBORNE DUST [329].**

Particulate matter (PM) page 35

### *Incineration*

When plastic is burned, airborne PM is released. PM consists of “black carbon” [382] in the form of char or ash, PM<sub>10</sub>, and PM<sub>2.5</sub> [362]. It can contain heavy metals, VOCs, PAHs, and PCDD/Fs [383– 386]. Plastic burning has been estimated to contribute to 6.8% of PM<sub>2.5</sub> in Nanjing, China [387]; 13.4% of PM<sub>2.5</sub> in Delhi, India [388]; and up to 3% and 15% of PM<sub>2.5</sub> in Atlanta, Georgia, and Dhaka, Bangladesh, respectively [389].

Evidence suggests that PM solids together with PAHs may be more deleterious to health than PM alone [390]. Thus, PM<sub>2.5</sub>-bound PAH are both carcinogenic and mutagenic [77] and may be linked to immunological and developmental impairments and reproductive abnormalities [391].

### *Microplastics*

Data are lacking on the contribution of MPs to airborne PM, and so respirable exposures in humans cannot be estimated reliably [171]. However, in an urban setting, MPs were found in all air samples, with deposition rates ranging from 575 to 1,008 MPs/m<sup>2</sup>/day, the majority (92%) of which were fibrous with 15 different petrochemical-based polymers being identified [392].

Nevertheless, airborne MPs have been identified as an emerging source of PM pollution [393, 394]. MPs can be released into the atmosphere from a range of sources, including compost spreading, wastewater sludge, tires, textiles, and paint [393–395], and are potentially transported by wind currents. Several MPs have been detected in the atmosphere in various forms (fibers, fragments, film) and include PE, polyester, and PUR [396]. However, little is known about the extent to which people are exposed to airborne PM MPs, and further research is required to better understand the implications for human health.

## LOCAL PRODUCE IN THE SOUTHERN HIGHLANDS

<p><b>Alka Power</b> BOWRAL, 2576 Australia's first and only true naturally raised alkaline spring water.... Email: <a href="mailto:sp@alkapower.com.au">sp@alkapower.com.au</a> Call: 0411 155 199</p>	<p><b>Artemis Wines &amp; Distillery</b> 46 Sir Charles Moses Lane, off the Old Hume Highway, Mittagong Everyone is welcome at our Cellar Door. Email: <a href="mailto:cellardoor@artemiswines.com.au">cellardoor@artemiswines.com.au</a> Call: 0401 199 075 Trading Hours: 7 days a week from 11am to 4pm</p>
<p><b>Ashton Park Moss Vale</b> Ashton Park, 6111 Illawarra Highway, Moss Vale, NSW Trail Riding Available Call: 0427 203 402</p>	<p><b>Baked In Berrima</b> 118 Wingecarribee Street, Berrima Artisan bakery in the historic town of Berrima, baking up a storm with love. ... Call: 0449 728 179 Trading Hours: Thu to Sun from 7am to 2pm</p>
<p><b>Berrima General Store &amp; Cafe</b> 1/13 Old Hume Hwy, Berrima General Store and Cafe featuring local produce, beautiful food &amp; grocery essentials Email: <a href="mailto:diegoarata05@gmail.com">diegoarata05@gmail.com</a> Trading Hours: Mon, Wed &amp; Thu from 8am to 4pm Tue, Sat &amp; Sun from 7:30am to 4:30pm Friday from 7am to 4pm</p>	<p><b>Black Hen Kitchen</b> Email: <a href="mailto:hello@blackhenkitchen.com">hello@blackhenkitchen.com</a> Trading Hours: By Appointment <b>Blue Frog Truffles</b> 63 Goolabri Drive, Sutton Blue Frog Farm plays an active role in the Festival Grower Association Call: 0403 242 454</p>
<p><b>Bondi To Bowral Box</b> Burradoo, NSW Call: 0403 882 281 Trading Hours: Online 24/7</p>	<p><b>Bowral Beekeeping</b> 174 Mittagong Road, Bowral We are a unique agritourism business providing mentoring, corporate team building Email: <a href="mailto:hamish@bowralbeekeeping.com">hamish@bowralbeekeeping.com</a> Call: 0428 294 569</p>
<p><b>Bowral Private Chef</b> Bowral Private Chef was established nearly 12 years ago, and is all about produce Email: <a href="mailto:david@sydneyprivatechef.com.au">david@sydneyprivatechef.com.au</a> Call: 041840 5920 Trading Hours: 7 days, 7am to 11pm</p>	<p><b>Bundanoon</b> 170 Riversdale Road, Illaroo Bundanoon's dramatic new facilities, the Art Museum Email: <a href="mailto:admin@bundanon.com.au">admin@bundanon.com.au</a> Call: 02 4422 2100</p>
<p><b>Cheese etc</b> Shop 4, High Street, 310-318 Bong Bong Street, Bowral Call: 0479 197 331</p>	<p><b>Cuttaway Creek Raspberry Farm</b> 2466 Old Hume Highway, Mittagong (not open to public) Winners of numerous Prestigious Awards, our products include berry jams, wine, sauces and vinegars Email: <a href="mailto:info@cuttawaycreek.com.au">info@cuttawaycreek.com.au</a></p>
<p><b>Dawning Day Farms</b> 25 Rockleigh Road, Exeter Dawning Day is the culmination of a 20 year long dream of ours, to own and run our own small vineyard. Call: 0401 715 772 Trading Hours: Fri &amp; Sat from 11am to 5:30pm, Mon &amp; Thu appointment only</p>	<p><b>Eezybeez</b> 19 Stanley Street, Hill Top Call: 0410 590 044 Trading Hours: Online Trading Only  <b>Food &amp; Wine in Robertson</b></p>
<p><b>Flour Bar</b> 386 Argyle Street, Moss Vale Set in a beautiful mid-1950's bank, Baking is all about timing and feeling. Creativity comes from our community of suppliers. Deliciousness comes from dedication to our craft and passion. Email: <a href="mailto:cheers@flourbar.com.au">cheers@flourbar.com.au</a> Call: 02 4868 2552 Trading Hours: 7 days 6am til 10pm</p>	<p><b>Graze Catering</b> 1303 Nowra Road, Fitzroy Falls We are a chef lead Premium caterer based in the southern highlands. We are passionate about creating delicious food using only the best quality ingredients sourced from local farms, artisans, and from our very own vegetable, herb, and fruit gardens. Email: <a href="mailto:hello@grazecatering.com.au">hello@grazecatering.com.au</a> Call: 0467 705 843 Trading Hours: On application</p>

<p><b>Hidden Valley Farms</b> 17 Mills Road, Carrick On behalf of my family and I, we welcome you to Hidden Valley Farms. Our farm story started over 25 years ago we saw a 100-year-old farm that was tired and needed passion and devotion to bring it back to life. In its past life it was a thriving apple, pear and quince orchard with fruit taken by train to Sydney markets and by ship to England, often winning prizes there.... Email: <a href="mailto:info@hiddenvalleyfarms.com.au">info@hiddenvalleyfarms.com.au</a> Call: 0408 111 122 Trading Hours: Contact Business For Trading Hours</p>	<p><b>Highlands Beverages</b> 90 Jemma Road, Prestons Call: 02 9607 1949 Trading Hours: No trading hours to show <b>Il Pranzo</b> Shop 14, 322-324 Argyle Street, Moss Vale Call: 02 4869 3219 Trading Hours: Mon to Fri from 7am to 3pm Saturdays from 8am to 2pm <b>Little Piggies Ice Cream</b> Penrose Email: <a href="mailto:jen@littlepiggies.com.au">jen@littlepiggies.com.au</a></p>
<p><b>Highlands Tea Company</b> Southern Highlands You don't happen to have... We're lucky enough to call The Southern Highlands home. The Southern Highlands is also home to one of the country's most prolific wine regions, quaint historical villages, remarkable countryside, and stunning views Email: <a href="mailto:sales@highlandsteacompany.com.au">sales@highlandsteacompany.com.au</a> Call: 0417 444 408 Trading Hours: Daily from 7am to 7pm - online or phone</p>	<p><b>Kangaroo Valley Olives</b> 110 Cedar Springs Road, Kangaroo Valley Call: 0447 491 245 Trading Hours: Group degustation tastings by prior appointment <b>Kielty's Irish Sauces</b> Product available from the Southern Highlands Welcome Centre, 62-70 Main Street, Mittagong A hunter, a forager and a true master of the stove</p>
<p><b>L'Air Du Wombat</b> 1211 Oallen Road, Oallen You don't need to be an experienced chef to enjoy black winter truffle Tricia. Email: <a href="mailto:fun@trufflehunting.com.au">fun@trufflehunting.com.au</a> Call: 0408 478 448</p>	<p><b>Lame Duck Foods</b> Available - Southern Highlands Welcome Centre, 62-70 Main Street, Mittagong Locally made produce to suit many different cuisines. Email: <a href="mailto:bruce_thomas@bigpond.com">bruce_thomas@bigpond.com</a> Call: 0418 472 807</p>
<p><b>Life At Greenlaw</b> 543 Moss Vale Road, Burradoo NSW 2576 Escape to the country at one of Bowral's oldest properties Over ten years ago my family moved to Bowral in the Southern Highlands, we had a goal of sustainable living in an environmentally conscious fashion. Greenlaw now has an extensive vegetable garden, a diverse range of fruit trees, many different flower and herbs gardens, and lots of chickens and bee hives! We are passionate about making a difference in the world and in helping others to make wiser environmental choices in their everyday lives. Email: <a href="mailto:kirstylumb@yahoo.com">kirstylumb@yahoo.com</a> Call: 0404004307</p>	<p><b>Mae Hill Farm</b> 48/6 Owen Street, Mittagong NSW 2575 Mae Hill Farm are a family owned business, who run a paddock to plate gourmet. Swapping the city for the countryside is the best thing we ever did, and I can't wait for people to taste our paddock to plate products – delicious, grass-fed, ethically reared meat, delivered to your door Email: <a href="mailto:frances@maehillfarm.com.au">frances@maehillfarm.com.au</a> Call: 0417 142 322 Trading Hours: Monday - Friday 8am - 5pm and Saturdays 8am - 2pm</p>
<p><b>Mark's Busy Bees</b> Moss Vale At Marks Busy Bees, we are committed to sustainability and minimising waste. Email: <a href="mailto:marksbusybees@gmail.com">marksbusybees@gmail.com</a> Call: 04 3235 6994 Trading Hours: 24 hrs online</p>	<p><b>Maugers Meats</b> Shops 2-3 (rear) 320-326 Bong Bong St, Bowral The Maugers band has proudly become synonymous with the very finest quality meats. Our farm and butcheries have been supplying premium, sustainably raised meat to the Southern Highlands and beyond for over 50 years. We understand the difference in quality and taste that handpicked, pasture raised meat delivers. Email: <a href="mailto:info@maugers.com.au">info@maugers.com.au</a> Call: 02 4861 1570 Trading Hours: Mon to Fri from 8.30 am to 5.30 pm Saturday from 8.30 am to 12.30 pm</p>
<p><b>Moonacres Kitchen</b> Shop 6-7, 79-81 Hoddle Street, Robertson Whenever you eat Moonacres produce, you can be confident that everything in the chain has been looked after and treated ethically – from the soil, to the truck driver who delivered it. And that's what makes Moonacres produce taste so good. Email: <a href="mailto:info@moonacres.com.au">info@moonacres.com.au</a> Call: 02 4885 1788 Trading Hours: 7 days per week, for breakfast and lunch</p>	<p><b>Mrs Oldbucks Pantry &amp; Table</b> Shop 3-4, 15-17 Old Hume Highway, Berrima One of the best things about Mrs Oldbucks Pantry is that most of the products sold there are local, and this has helped it become a real destination for those many people who now return time and time again to stock up on the culinary delights offered there. Email: <a href="mailto:sales@mrsoldbucks.com.au">sales@mrsoldbucks.com.au</a> Call: 1800 440 144 Trading Hours: Daily from 9am to 4pm</p>

<p><b>Mussett Holdings Regenerative Farm</b> 133 Mccallums Road, Colo Vale NSW 2575 An off-grid, regenerative farm focused on doing the right thing for the environment. Our aim is to have a balance between crops and livestock to balance the nutrient cycle free from pesticides and herbicides. Email: <a href="mailto:farm@mussettholdings.com.au">farm@mussettholdings.com.au</a> Call: 0421 735 344 Trading Hours: Mon to Fri 8am - 5pm, Sat 9am - 1pm</p> <p><b>Robertson Village Butchery</b> Shop 11-12, 79 Hoddle Street, Robertson Traditional styled, local village butcher.</p>	<p><b>Pecora Cheese &amp; Wine</b> 91 Hoddle Street, Robertson Pecora Cheese &amp; Wine stocks the full range of Pecora Dairy Cheese. Our overarching philosophy is a gentleness on the land, towards our ewes, and in the production our cheese. This light handed approach intertwines throughout all aspects of our farming and cheesemaking, resulting in benchmark, ewe's milk cheeses with provenance of a single time and place and are expression of our farms entire ecosystem. We've raised our pure East Friesian sheep flock and created our cheese making systems with painstaking care over many years. Email: <a href="mailto:pecoradairy@gmail.com">pecoradairy@gmail.com</a> Call: 0431 878 539 Trading Hours: Thu from 9am to 7pm Fri &amp; Sat from 9am to 8pm Sun from 9am to 4pm</p>
<p><b>PepperGreen Estate</b> 13 Market Place, Berrima NSW PepperGreen Estate offers a unique, innovative and interactive dining experience. It is located in the premium cool climate wine region of Southern Highlands, New South Wales. We pride ourselves on producing the finest grapes from a vineyard nestled in the undulating slopes of Canyonleigh, an area known for rugged terrain enriched with rocky sandy loam soil and a clay base that is a perfect combination for producing a cool climate boutique vintage year in and year out Email: <a href="mailto:bookings@peppergreenestate.com.au">bookings@peppergreenestate.com.au</a> Call: 02 4877 1070</p>	<p><b>Raw and Wild Cafe</b> 250 Bong Bong St, Bowral Raw and Wild is an Organic and Wholefoods market and café serving fresh food. We use fresh produce from our own organic market Email: <a href="mailto:info@rawwild.com.au">info@rawwild.com.au</a> Call: 02 4851 5155 Trading Hours: Market Mon to Fri from 8am to 4pm Sat &amp; Sun from 8am to 2pm Café 7 days 8am - 4pm</p> <p><b>Rochelle Adonis Cakes + Confections</b> Bowral Artisan crafted cakes and confectionary here in the Southern Highlands Call: 0410 584 774</p>
<p><b>Robertson Truffles</b> 151 McEvelly Road, Robertson Welcome to Robertson Truffle Farm in the beautiful NSW Southern Highlands. We believe we have the perfect climate at Robertson, located in the NSW Southern Highlands, to produce truffles. The town of Robertson is noted for its distinctive red volcanic soil, which is known as 'Robertson Soil'. The combination of this soil, a lot of work and preparation, a good rainfall, and cool winters has made this perfect for truffle growing. If you ever need any fresh truffle, please email us directly at <a href="mailto:info@robertsontruffles.com.au">info@robertsontruffles.com.au</a></p>	<p><b>SoHi Spirits</b> Shop 3B, 391-397 Bong Bong Street Bowral NSW 2576 Real. Fancy. The grass is always greener in the Southern Highlands. Here, the grass <u>is</u> always greener. Green hills, manicured gardens, fertile volcanic soil, pure water... the Southern Highlands are fancy by nature. The home and hideaway for those who appreciate the good things in life, the Highlands are elevated in more ways than one. Let us take you up a notch. Email: <a href="mailto:hi@sohi.com.au">hi@sohi.com.au</a>, Call: 02 4871 0074 Trading Hours: Thursday to Sunday 11am-5pm. Private tastings by appointment.</p>
<p><b>Sondara Estate</b> Pine Park, 352 Woodlands Rd, Woodlands 2575 Our wine is made using our own fruit on the Estate. The unique combination of geography, geology and climate results in terroir that is perfect for producing beautiful wine. We believe that every bottle of our wine should be an expression of the region, as well as a reflection of our commitment to quality and flavour bringing a unique and enjoyable experience. Email: <a href="mailto:admin@sondara.com.au">admin@sondara.com.au</a> Call: 0411 582 991, Trading Hours: By Appointment</p>	<p><b>Southern Honey</b> 36 Ascot Road, Bowral Call: 0400 989 115 Trading Hours: No trading hours to show</p> <p><b>Sutton Forest Country Store</b> 503 Exeter Road, Sutton Forest Call: 0497 229 890 Trading Hours: Mon to Fri from 7.30am to 4pm Sat &amp; Sun from 8.30am to 5pm</p>
<p><b>The Backyard Picklery</b> 52 Bumballa Street, Tallong Email: <a href="mailto:sales@thebackyardpicklery.co">sales@thebackyardpicklery.co</a></p> <p><b>The Burrow Cafe at Fitzroy Falls</b> 1303 Nowra Road, Fitzroy Falls Cafe at Fitzroy Falls Visitor Information Centre Email: <a href="mailto:hello@grazecatering.com.au">hello@grazecatering.com.au</a> Call: 0467 705 843 Trading Hours: Thu to Sun (and Public Holidays) from 8am to 4pm</p>	<p><b>The Bendooley Larder</b> 2/328 Bong Bong Street, Bowral Our focus on seasonality means that we seek out the produce that is naturally growing in each season. If you know the restaurant at Bendooley Estate, you know the quality of the food here at Bendooley Larder is superb. It is prepared in the Bendooley Estate kitchens every morning and travels only eight kilometres down the road to be lovingly offered to you, our customer, beautifully fresh and healthy, for your own home kitchen experience. Call: 02 4868 8789 Trading Hours: Mon to Sun from 8:30am</p>

**The Christmas Tree Man**

401 Nandi Road Wingello, New South Wales, 2579 Australia  
 We grow and supply farm fresh Christmas Trees, delivered to your door. The tree species used are Pinus Radiata, Christmas Tree variety. Each year, thousands of tree seedlings are planted in the paddocks. As they grow in size, they are pruned twice yearly into the conical Christmas Tree shape, until they are eventually ready for harvest approximately 4 years later.

Email: trees@christmastreeman.com.au

Call: 02 4884 1302

Trading Hours:

Open Selected Sunday's prior to Christmas

**The Dahlia Patch Flower Farm**

154 Old South Rd, Alpine 2575

The Dahlia Patch Flower Farm offers experiences of harvesting your own Dahlia.

Email: thedahliapatch@outlook.com

Call: 04 1305 7671

Trading Hours: By Appointment

**The Dairy Store**

The Cheese Factory, 107 Hoddle Street, Robertson @The Robertson Cheese Factory

Email: venetiahendry@yahoo.co.uk

Call: 0415 730 709

Trading Hours: Daily from 9:30am to 4:30pm

**The Still Room 1710**

1 Nowra Road, Moss Vale NSW 2577

The Still Room 1710 creates an artisanal range of seasonal jams, marmalades, ...

We are dedicated to showcasing our regenerative farming practices and encouraging people to learn how to grow, cook and eat the healthiest produce available. Our farm sits in the heart of the Southern Highlands on 17 acres of rich basalt soil that rises on a hilltop. It is a place of breathtaking beauty, charm and character and we consider it a privilege to be farming this land, in this place, on the land of the Gundungurra people.

Email: emmajane@thestillroom.com.au

Call: 02 4040-7629 Trading Hours: N/A online business

**The Truffle Barn**

Address on application

The Truffle Barn is a small truffiere in the Southern Highlands NSW. We are passionate about caring for the planet and our soils. Using permaculture practices to manage the land, our truffles have been grown without the use of chemicals and pesticides. Sustainability is at the heart of everything we do and we hope this ensures the security and longevity of our farm for many generations.

Email: You can contact this business via it's website

contact us form Trading Hours: Contact Business For Trading Hours & Tour Times

**The What If Society**

55a Throsby Street Moss Vale Market Stall

We have a strong focus on self-sufficiency, zero waste, education and the best locally sourced seasonal produce from our hand-picked suppliers. Our mission is to create a community who want to learn, live and thrive in an environmentally friendly, holistic approach to food and the planet. We do this by exploring, sharing and educating one another on the benefits and possibilities that each season and region brings.

Email: enquiries@thewhatifsociety.com

Trading Hours: Wednesday to Sunday 7am - 2pm

**The Whey Cafe & Dairy Store At The Old Robertson Cheese Factory**

Robertson Cheese Factory, 107 Hoddle Street, Robertson Atmospheric and quirky cafe with an adjacent cheese shop and deli

Call: 02 4885 2675

Trading Hours:

Store - Daily from 10am to 4pm

Cafe - Daily from 9.30am to 3.30pm

**Truffle Mad - Redwood Park Truffle & Vino**

Redwood Park, 535 Joadja Road, Mandemar

The black truffle is a rare and mysterious delicacy that flourishes in very few places around the world. No wonder most people thought we were mad attempting to grow these "black diamonds" in Australia's Southern Highlands Truffle Mad Gin is the world's first "Paddock to Pour" truffle gin, with the truffles grown on our family farm used to create this truly unique and indulgent combination.

info@trufflemade.com.au

**Wynlen House Artisan Village Farm & Learning Centre**

65 Nerrim Street, Bundanoon NSW 2578

Learn to grow fabulous organic vegetable in cool climate Southern Highlands. Our Mission is to help you Grow Fabulous Food: Organic Vegetables in cool climate locations. Eating food that you have grown is the best food in the world. Growing food is such a positive and satisfying activity. It is great for the earth and helps put meaning and productivity into your life.

Contact 02 4883 6734

**AIR AND NOISE POLLUTION FROM THE  
TRANSPORTATION OF MATERIALS TO AND FROM  
PLASREFINE PLANT WILL BE A GIVEN.**

**WE WILL SEE IT, HEAR IT AND SMELL IT.**

**THERE IS NO GUARANTEE FROM PLASREFINE  
THAT THEIR FILTRATION SYSTEMS WILL PREVENT  
ANY EXPOSURE OF POLLUTANTS INTO OUR  
ENVIRONMENT – AIR, SOIL AND WATERWAYS**

***THERE WILL BE A RISK & COST TO MOSS VALE AND  
THE SOUTHERN HIGHLANDS:***

- ***ENVIRONMENT***
- ***HEALTH AND TOXIC EXPOSURE***
- ***LOCAL ECONOMY***

***SAY NO TO THIS PROPOSAL FOR MOSS VALE SITE***