

Public submission

NAME REDACTED

Submission ID: 205294

Organisation: *N/A*

Location: *New South Wales*

Supporting materials uploaded: *Attached overleaf*

Submission date: 10/13/2024 11:12:51 PM

Dear Independent Forestry Panel,

Thank you for the opportunity to add my voice to the Forestry Industry Action Plan.

I want to see an immediate end to native forest logging in NSW.

I have a property in Wee Jasper that protects large tracks of forest that was partially logged back in the mid-20th century. The unlogged parts support populations of the endangered Greater Glider *Petauroides Volans* and the vulnerable Powerful Owl *Ninox strenua*.

I would like to highlight the situation at Bondo State Forest, which borders my property. I drive through this forest weekly and am always struck by the size of the beauty and size of the trees (Figure 1). The region has already seen extensive native forest clearance in the mid-20th century, when large areas were replaced with pine plantations (see Figure 1). Despite this impact, over 22,000 ha of native forest remains. This native forest in Bondo now contains some of the largest remanent tracts of old-growth Mountain Gum *Eucalyptus dalrympleana*, Brown Barrel *Eucalyptus fastigata* and Alpine Ash *Eucalyptus delegatensis* left in NSW. These forests are also critical habitats for several threatened species, including the Powerful Owl, the Greater Glider and the Yellow-bellied Glider *Petaurus australis* that's persistent is not compatible with logging. For example, Conservation Advice for the Greater Glider¹.

Unfortunately, logging in Bondo State Forest has drastically increased over the past 12 months, and there are deeply concerning plans to log up to one-sixth of the forest in the next two years (Figure 4 and Figure 5).

Given that NSW Forestry Corporation continues to not adequately survey to detect and protect the habitat of threatened species, as required by their own regulations² the current and planned logging across Bondo undoubtable lead to further loss of old growth trees and threatened species.

NSW Forestry is not taking its responsibility seriously in terms of sustainable harvest and protection of environmental values, especially threatened species. Without your intervention I fear for the loss of forest values across Bondo and all State Forests managed for Logging.

It is vital to end the logging of native forests.

Thank you for considering my submission.

Sincerely,

¹ **Conservation Advice for *Petauroides volans* (greater glider (southern and central))**

<https://www.environment.gov.au/biodiversity/threatened/species/pubs/254-conservation-advice-05072022.pdf>

² **Environment Protection Authority v Forestry Corporation of New South Wales [2024] NSWLEC 78**

<https://www.caselaw.nsw.gov.au/decision/191025c8c3849ddaec6b6ba2>

Figures



Figure 1: Example of the beauty of the native forest in the Bondo State Forest.

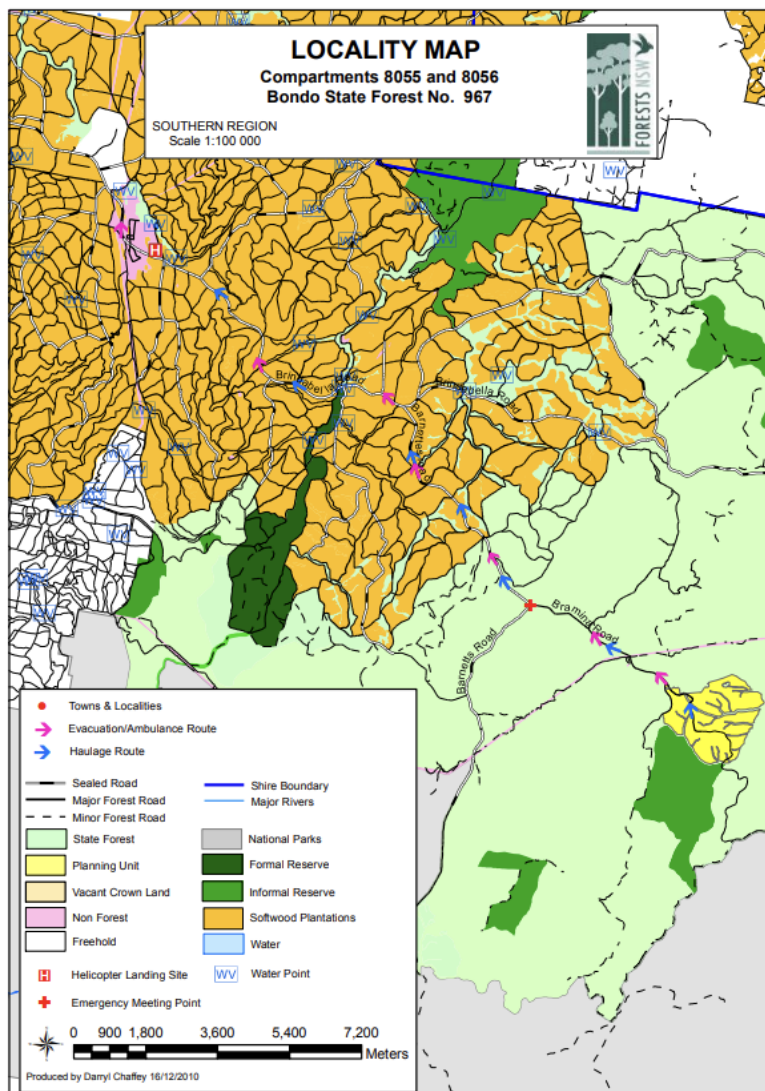


Figure 2: Map of Bondo State Forest showing the native and pine plantations
https://www.forestrycorporation.com.au/_data/assets/pdf_file/0019/461503/Harvest-Plan-Bondo-Cpts-8055-and-8056.pdf



Figure 3: Photo of recent logging in Bondo State Forest

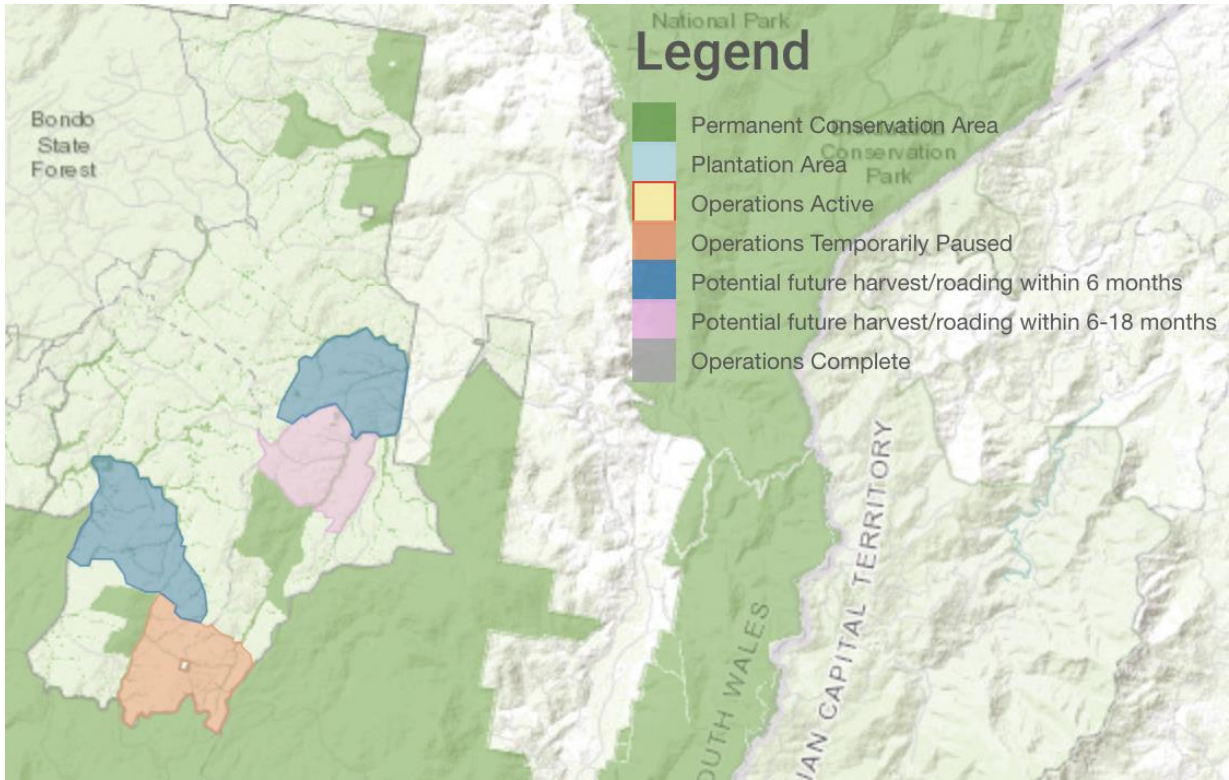


Figure 4: Harvest Plan for Bondo from NSW Forestry Corporations.

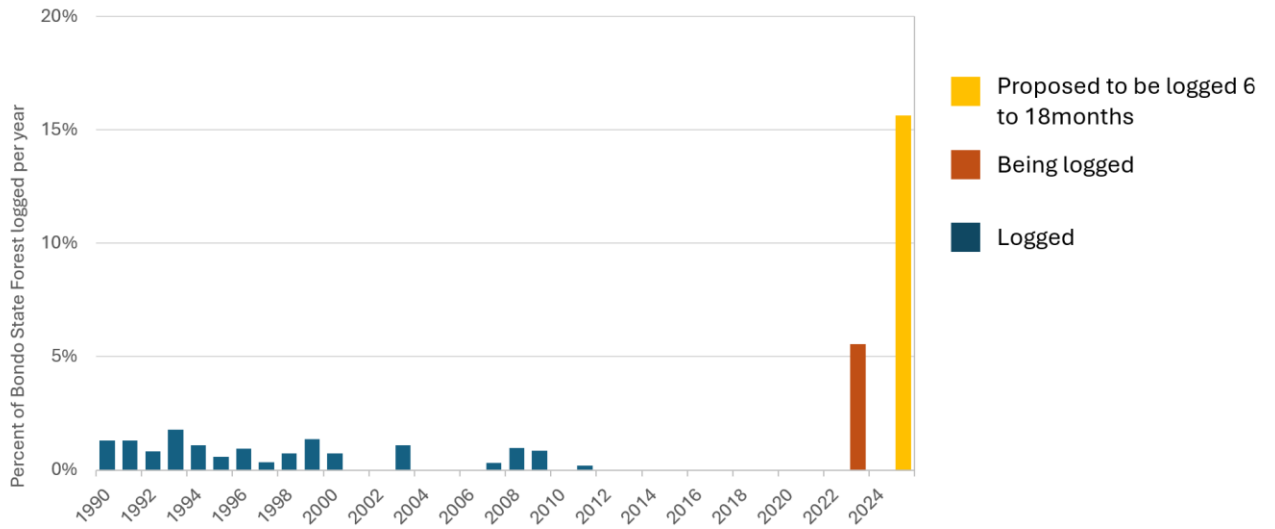


Figure 5: Historic and current logging plans for Bondo State Forest.