

Appendix 2

Soil Survey Summary and Soil Profile Descriptions



Table A2.1: Soil Map Units and Soil Types Summary

Site #	Soil Map Units		Soil Profile - Australian Soil Classification (ASC)	ASC Family Criteria
	#	Name		
C1	2	Dermosols	Haplic Eutrophic Brown Dermosol	BFLMW
C2	1	Chromosols	Vertic Eutrophic Brown Chromosol	BEMOWNR
C3	1	Chromosols	Vertic Eutrophic Brown Chromosol	BFMOWNR
C4	1	Chromosols	Vertic Eutrophic Brown Chromosol	BELOWNR
C5	2	Dermosols	Haplic Eutrophic Brown Dermosol	BELOW
C6	1	Chromosols	Vertic Eutrophic Brown Chromosol	BFMOWNR
C7	1	Chromosols	Vertic Eutrophic Red Chromosol	BEMOWNR
C8	2	Dermosols	Red Vertisol	-
C9	2	Dermosols	Brown Dermosol	-
C10	2	Dermosols	Haplic Eutrophic Brown Dermosol	BELOV
C11	1	Chromosols	Mottled Eutrophic Brown Chromosol	BHLOWNR
C12	1	Chromosols	Haplic Eutrophic Red Dermosol	BELOW
C13	2	Dermosols	Manganic Eutrophic Red Dermosol	BEMOW
C14	2	Dermosols	Brown Dermosol	-
C15	1	Chromosols	Brown Chromosol	-
C16	1	Chromosols	Brown Chromosol	-
C22	1	Chromosols	Vertic Eutrophic Brown Chromosol	BELOWNR
C23	2	Dermosols	Brown Dermosol	-
C24	1	Chromosols	Haplic Eutrophic Red Chromosol	BEMOWNR
C25	1	Chromosols	Manganic Eutrophic Brown Chromosol	BFOOWNR
C26	1	Chromosols	Vertic Eutrophic Red Chromosol	BFLOVNR
C27	1	Chromosols	-	-
C28	1	Chromosols	Eutrophic Subnatric Brown Sodosol	BFLOWNR



Site #	Soil Map Units		Soil Profile - Australian Soil Classification (ASC)	ASC Family Criteria
	#	Name		
C29	1	Chromosols	Vertic Eutrophic Brown Chromosol	BEMOWNR
C30	2	Dermosols	Haplic Epipedal Black Vertosol	ESSW
C31	1	Chromosols	Vertic Eutrophic Red Chromosol	BFMOWNR
C32	2	Dermosols	Haplic Eutrophic Red Dermosol	BELOW
C33	2	Dermosols	Haplic Eutrophic Red Dermosol	BELOW
C34	2	Dermosols	Manganic Eutrophic Brown Dermosol	BFLOW
C35	2	Dermosols	Brown Vertosol	-
C36	1	Chromosols	Bleached Eutrophic Brown Chromosol	BGLOWNR
C37	1	Chromosols	Bleached Eutrophic Brown Chromosol	BFKOWNR
C38	2	Dermosols	-	-
C39	1	Chromosols	Mottled Eutrophic Red Chromosol	CEMOWNR
C40	1	Chromosols	Vertic Eutrophic Black Chromosol	BFOOWNR
C41	1	Chromosols	Bleached-Sodic Eutrophic Brown Chromosol	BFLOWNR
C42	1	Chromosols	Vertic Eutrophic Black Chromosol	BFLOWNR
C43	1	Chromosols	Manganic Subnatric Grey Sodosol	BGKOWNR
C44	2	Dermosols	Red Dermosol	-
C45	2	Dermosols	Epipedal Brown Vertosol	-
C46	2	Dermosols	Haplic Eutrophic Red Dermosol	BELOW
C47	2	Dermosols	Haplic Eutrophic Red Dermosol	BFMOW
C48	2	Dermosols	Epipedal Brown Vertosol	-
C49	1	Chromosols	Vertic Eutrophic Brown Chromosol	BFLOWNR
C50	2	Dermosols	Vertic Eutrophic Brown Dermosol	BFMOW
C51	1	Chromosols	Manganic Mottled-Subnatric Grey Sodosol	BFKOWNR
C52	1	Chromosols	Vertic Eutrophic Yellow Chromosol	BFMOWNR



Site #	Soil Map Units		Soil Profile - Australian Soil Classification (ASC)	ASC Family Criteria
	#	Name		
C53	1	Chromosols	Vertic Mesotrophic Brown Chromosol	BFLOWNR
C54	1	Chromosols	Vertic Eutrophic Red Chromosol	BELOWNR
C55	2	Dermosols	Manganic Eutrophic Red Dermosol	BGOOW
C56	2	Dermosols	Epipedal Brown Vertosol	-
C57	2	Dermosols	Epipedal Brown Vertosol	-
C58	2	Dermosols	Epipedal Brown Vertosol	-
C59	1	Chromosols	Vertic Eutrophic Red Chromosol	BFLOWNR
C60	1	Chromosols	Haplic Eutrophic Brown Chromosol	BFLOWNR
C61	1	Chromosols	Vertic Eutrophic Red Chromosol	BFMOWNR
C62	1	Chromosols	Vertic Eutrophic Black Chromosol	BFMOWNR
C63	1	Chromosols	Vertic Eutrophic Red Chromosol	BEMOWNR
C64	1	Chromosols	Vertic Eutrophic Red Chromosol	BFMOWNR
C65	2	Dermosols	Epipedal Brown Vertosol	-
C66	1	Chromosols	Vertic Eutrophic Black Chromosol	BFLOWNR
C67	1	Chromosols	Manganic Eutrophic Red Dermosol	BELOW
C68	1	Chromosols	Vertic Eutrophic Brown Chromosol	BFLOWNR
C69	2	Dermosols	Mottled Eutrophic Black Dermosol	BFLOW
C70	2	Dermosols	Vertic Eutrophic Red Dermosol	BFLOW
C71	2	Dermosols	Vertic Eutrophic Red Dermosol	BFMOW
C72	2	Dermosols	Vertic Eutrophic Red Dermosol	BFKMW
C73	1	Chromosols	Vertic Eutrophic Brown Chromosol	BFMOWNR
D1	1	Chromosols	Vertic Eutrophic Brown Chromosol	BFLOWNR
D2	2	Dermosols	Brown Dermosol	-
D3	2	Dermosols	Brown Dermosol	-



Site #	Soil Map Units		Soil Profile - Australian Soil Classification (ASC)	ASC Family Criteria
	#	Name		
D4	2	Dermosols	Brown Dermosol	-
D5	3	Kandosols	Haplic Eutrophic Black Kandosol	BFLLWNR
D6	3	Kandosols	Haplic Eutrophic Black Kandosol	BFLLWNR
D10	2	Dermosols	Haplic Eutrophic Red Dermosol	BELMW
D11	2	Dermosols	Haplic Eutrophic Red Dermosol	BELOV
D13	2	Dermosols	Brown Dermosol	-
D14	2	Dermosols	Brown Dermosol	-
D18	1	Chromosols	Vertic Eutrophic Black Chromosol	BEMOWNR
D19	1	Chromosols	Haplic Eutrophic Red Chromosol	BEKOWNR
M1	2	Dermosols	Haplic Eutrophic Brown Dermosol	BEMOW
M2	2	Dermosols	Brown Dermosol	
M3	1	Chromosols	Eutrophic Mesonatric Brown Sodosol	BFLMWNR
M4	1	Chromosols	Haplic Eutrophic Brown Chromosol	BFLOWNR
M5	1	Chromosols	Haplic Hypocalcic Brown Chromosol	BEKOWNR
M6	2	Dermosols	Brown Dermosol	
M7	1	Chromosols	Haplic Hypocalcic Brown Chromosol	BEKMNVR
M8	1	Chromosols	Haplic Eutrophic Brown Chromosol	BEKOWNR
M9	1	Chromosols	Brown Chromosol	
M10	1	Chromosols	Haplic Eutrophic Brown Chromosol	BFLOWNR
M11	1	Chromosols	Haplic Eutrophic Red Chromosol	BEMOWNR
M12	1	Chromosols	Haplic Eutrophic Red Chromosol	BEMOWNR
M13	1	Chromosols	Haplic Eutrophic Red Chromosol	BEMOWNR
12	3	Kandosols	Haplic Mellic Black Kandosol	BFLLWNR
13	2	Dermosols	Haplic Eutrophic Brown Dermosol	BGKOW



Site #	Soil Map Units		Soil Profile - Australian Soil Classification (ASC)	ASC Family Criteria
	#	Name		
14	2	Dermosols	Haplic Eutrophic Red Dermosol	BHMOV
15	4	Tenosols	Basic Paralithic Leptic Tenosol	BHL-UNR
16	1	Chromosols	Haplic Eutrophic Red Chromosol	BGMOUNR
17	1	Chromosols	Mottled Eutrophic Red Chromosol	BEOOWNR
18	1	Chromosols	Haplic Eutrophic Red Chromosol	BGMOVNR
19	2	Dermosols	Haplic Eutrophic Brown Dermosol	BH00U
8	1	Chromosols	Yellow Chromosol	-



Site Description – Site C1

Site Reference	C1	ASC Name	Haplic Eutrophic Brown Dermosol (BFLMW)		
Average Slope	3%	Land Use	Grazing	Coordinates	
Landform Pattern	Drainage Plain	Soil Fertility	Moderately High	MGA 55	
Landform Element	Plain	BSAL Site Status	Verified BSAL	X: 688029	
Surface Condition	Soft	Mapped as BSAL	Yes	Y: 6285500	



Plate 1 – Soil Profile (C1)



Plate 2 – Surface (C1)



Plate 3 – Landscape (C1)

Horizon	Depth (m)	Description
A1	0.00 – 0.20	Dark Brown (Munsell 7.5YR 3/3) Silty Loam, with strong pedality. Strongly acidic pH, non-saline. Non-sodic. No coarse fragments. Many roots and well drained. Gradual boundary.
B21	0.20 – 0.50	Dark Yellowish-Brown to Strong Brown (Munsell 10YR 4/4 to 7.5YR 4/6) Silty Loam, with moderate pedality. Slightly acidic trending to neutral pH, non-saline. Non-sodic. No coarse fragments. Common fine roots and moderately drained. Gradual boundary.
B22	0.50 – 0.75	Brown (Munsell 7.5YR 4/4) Silty Clay Loam with moderate pedality. Neutral pH, non-saline. Non-sodic. No coarse fragments. No roots and moderately drained.

Sample Depth	ECe		pH _(1-5water)		ESP	
	dS/m	Rating	Value	Rating	Value	Rating
0-0.10	1.6	Non-saline	5.4	Strongly Acidic	1.8	Non-sodic
0.20-0.30	0.4	Non-saline	6.3	Slightly Acidic	0.9	Non-sodic
0.40-0.50	0.2	Non-saline	6.7	Neutral	0.9	Non-sodic
0.65-0.75	0.1	Non-saline	6.9	Neutral	1.2	Non-sodic



Site Description – Site C2

Site Reference	C2	ASC Name	Vertic Eutrophic Brown Chromosol (BEMOWNR)	
Average Slope	6%	Land Use	Grazing	Coordinates
Landform Pattern	Hillslope	Soil Fertility	Moderately High	MGA 55
Landform Element	Upper slope	BSAL Site Status	Verified BSAL	X: 687650
Surface Condition	Soft	Mapped as BSAL	Yes	Y: 6285652



Plate 1 – Soil Profile (C2)



Plate 2 – Surface (C2)



Plate 3 – Landscape (C2)

Horizon	Depth (m)	Description
A1	0.00 – 0.20	Very Dark Brown (Munsell 7.5YR 2.5/2) Clay Loam, with strong pedality. Moderately acidic pH, non-saline. Non-sodic. No coarse fragments. Many fine roots and well drained. Clear boundary.
B21	0.20 – 0.50	Dark Yellowish-Brown to Brown (Munsell 10YR 4/4 to 10YR 4/3) Heavy Clay, with strong pedality. Neutral pH, non-saline. Non-sodic. No coarse fragments. Few fine roots and well drained. Gradual boundary.
B22	0.50 – 0.80	Dark Greyish-Brown (Munsell 10YR 4/2) Heavy Clay, with strong pedality. Mildly alkaline pH, non-saline. Non-sodic. No coarse fragments. No roots and moderately drained.

Sample Depth	ECe		pH _(1-5water)		ESP	
	dS/m	Rating	Value	Rating	Value	Rating
0-0.10	0.5	Non-saline	5.6	Moderately Acidic	0.8	Non-sodic
0.20-0.30	0.2	Non-saline	6.9	Neutral	1.2	Non-sodic
0.40-0.50	0.2	Non-saline	7.2	Neutral	1.3	Non-sodic
0.65-0.75	0.2	Non-saline	7.4	Mildly Alkaline	1.5	Non-sodic



Site Description – Site C3

Site Reference	C3	ASC Name	Vertic Eutrophic Brown Chromosol (BFMOWNR)	
Average Slope	4%	Land Use	Grazing	Coordinates
Landform Pattern	Hillslope	Soil Fertility	Moderately High	MGA 55
Landform Element	Mid slope	BSAL Site Status	Verified BSAL	X: 687589
Surface Condition	Soft	Mapped as BSAL	Yes	Y: 6285914



Plate 1 – Soil Profile (C3)



Plate 2 – Surface (C3)



Plate 3 – Landscape (C3)

Horizon	Depth (m)	Description
A1	0.00 – 0.20	Dark Brown (Munsell 10YR 3/3) Loam, with moderate pedality. Moderately acidic pH, non-saline. Non-sodic. No coarse fragments. Many fine roots and well drained. Clear boundary.
B21	0.20 – 0.50	Dark Yellowish-Brown to Yellowish-Brown (Munsell 10YR 4/4 to 10YR 5/4) Heavy Clay, with strong pedality. Neutral to mildly alkaline pH, non-saline. Non-sodic. No coarse fragments. Few fine roots and moderately drained. Gradual boundary.
B22	0.50 – 0.90	Yellowish Brown (Munsell 10YR 5/4) Heavy Clay, with moderate pedality. Mildly alkaline pH, non-saline. Non-sodic. No coarse fragments. No roots and moderately drained.

Sample Depth	ECe		pH _(1-5water)		ESP	
	dS/m	Rating	Value	Rating	Value	Rating
0-0.10	0.7	Non-saline	5.9	Moderately Acidic	0.6	Non-sodic
0.20-0.30	0.2	Non-saline	6.8	Neutral	0.8	Non-sodic
0.40-0.50	0.2	Non-saline	7.3	Mildly Alkaline	1.0	Non-sodic
0.65-0.75	0.2	Non-saline	7.7	Mildly Alkaline	1.2	Non-sodic



Site Description – Site C4

Site Reference	C4	ASC Name	Vertic Eutrophic Brown Chromosol (BELOWNR)	
Average Slope	7%	Land Use	Grazing	Coordinates
Landform Pattern	Hillslope	Soil Fertility	Moderately High	MGA 55
Landform Element	Mid slope	BSAL Site Status	Verified BSAL	X: 687574
Surface Condition	Soft	Mapped as BSAL	Yes	Y: 6286371



Plate 1 – Soil Profile (C4)



Plate 2 – Surface (C4)



Plate 3 – Landscape (C4)

Horizon	Depth (m)	Description				
A11	0.00 – 0.15	Dark Brown (Munsell 7.5YR 3/4) Loam with strong pedality. Strongly acidic pH, non-saline. Non-sodic. No coarse fragments. Many fine roots and well drained. Gradual boundary.				
A12	0.15 – 0.40	Dark Brown (Munsell 7.5YR 3/4) Clay Loam with strong pedality. Neutral pH, non-saline. Non-sodic. No coarse fragments. Common fine roots and well drained. Clear boundary.				
B21	0.40 – 0.60	Dark Brown (Munsell 7.5YR 3/4) Light Medium Clay with strong pedality. Neutral pH, non-saline. Non-sodic. No coarse fragments. No roots and well drained.				
B22	0.60 – 0.90	Dark Brown (Munsell 7.5YR 3/4) Clay Loam with strong pedality. Neutral pH, non-saline. Non-sodic. No coarse fragments. No roots and well drained.				
Sample Depth	ECe		pH _(1.5water)		ESP	
	dS/m	Rating	Value	Rating	Value	Rating
0-0.10	1.0	Non-saline	5.3	Strongly Acidic	1.3	Non-sodic
0.20-0.30	0.2	Non-saline	6.5	Neutral	0.6	Non-sodic
0.40-0.50	0.2	Non-saline	6.7	Neutral	0.6	Non-sodic
0.65-0.75	0.2	Non-saline	6.7	Neutral	0.9	Non-sodic



Site Description – Site C5

Site Reference	C5	ASC Name	Haplic Eutrophic Brown Dermosol (BELOW)	
Average Slope	4%	Land Use	Grazing	Coordinates
Landform Pattern	Hillslope	Soil Fertility	Moderately High	MGA 55
Landform Element	Mid slope	BSAL Site Status	Verified Non-BSAL	X: 687640
Surface Condition	Soft	Mapped as BSAL	No	Y: 6286783



Plate 1 – Soil Profile (C5)



Plate 2 – Surface (C5)



Plate 3 – Landscape (C5)

Horizon	Depth (m)	Description				
A1	0.00 – 0.10	Very Dark Greyish-Brown (Munsell 10YR 3/2) Loam with moderate pedality. Very strongly acidic pH, non-saline. Non-sodic. No coarse fragments. Many fine roots and moderately drained. Gradual boundary.				
B21	0.10 – 0.30	Brown (Munsell 10YR 4/3) Loam, with strong pedality. Slightly acidic pH, non-saline. Non-sodic. No coarse fragments. Common fine roots and moderately drained. Gradual boundary.				
B22	0.30+	Yellowish-Brown (Munsell 10YR 5/4) Light Clay trending to Light Medium Clay with strong pedality. Neutral to mildly alkaline pH, non-saline. Non-sodic. No coarse fragments. No roots and moderately drained.				
Sample Depth	ECe		pH _(1-5water)		ESP	
	dS/m	Rating	Value	Rating	Value	Rating
0-0.10	1.3	Non-saline	4.7	Very Strongly Acidic	2.3	Non-sodic
0.20-0.30	0.2	Non-saline	6.4	Slightly Acidic	2.1	Non-sodic
0.40-0.50	0.2	Non-saline	7.1	Neutral	2.0	Non-sodic
0.65-0.75	0.3	Non-saline	7.4	Mildly Alkaline	2.8	Non-sodic



Site Description – Site C6

Site Reference	C6	ASC Name	Vertic Eutrophic Brown Chromosol (BFMOWNR)	
Average Slope	5%	Land Use	Grazing	Coordinates
Landform Pattern	Hillslope	Soil Fertility	Moderately High	MGA 55
Landform Element	Mid slope	BSAL Site Status	Verified BSAL	X: 687834
Surface Condition	Soft	Mapped as BSAL	Yes	Y: 6286248



Plate 1 – Soil Profile (C6)



Plate 2 – Surface (C6)



Plate 3 – Landscape (C6)

Horizon	Depth (m)	Description
A1	0.00 – 0.20	Dark Brown (Munsell 7.5YR 3/3) Loam, with moderate pedality. Strongly acidic pH, non-saline. Non-sodic. No coarse fragments. Many fine roots and well drained. Clear boundary.
B21	0.20 – 0.50	Strong Brown (Munsell 7.5YR 4/6 to 7.5YR 5/6) Heavy Clay, with strong pedality. Neutral pH, non-saline. Non-sodic. No coarse fragments. Few fine roots and moderately drained. Gradual boundary.
B22	0.50 – 0.90	Yellowish-Brown (Munsell 10YR 5/6) Heavy Clay, with moderate pedality. Neutral to mildly alkaline pH, non-saline. Non-sodic. No coarse fragments. No roots and moderately drained.

Sample Depth	ECe		pH _(1.5water)		ESP	
	dS/m	Rating	Value	Rating	Value	Rating
0-0.10	0.7	Non-saline	5.2	Strongly Acidic	0.9	Non-sodic
0.20-0.30	0.1	Non-saline	6.7	Neutral	0.5	Non-sodic
0.40-0.50	0.1	Non-saline	6.9	Neutral	0.6	Non-sodic
0.65-0.75	0.3	Non-saline	7.8	Mildly Alkaline	0.7	Non-sodic



Site Description – Site C7

Site Reference	C7	ASC Name	Vertic Eutrophic Red Chromosol (BEMOWNR)	
Average Slope	7%	Land Use	Grazing	Coordinates
Landform Pattern	Hillslope	Soil Fertility	Moderately High	MGA 55
Landform Element	Upper Slope	BSAL Site Status	Verified BSAL	X: 687993
Surface Condition	Soft	Mapped as BSAL	Yes	Y: 6285972



Plate 1 – Soil Profile (C7)



Plate 2 – Surface (C7)



Plate 3 – Landscape (C7)

Horizon	Depth (m)	Description
A1	0.00 – 0.20	Dark Reddish-Brown (Munsell 5YR 3/4) Loam, with strong pedality. Moderately acidic pH, non-saline. Non-sodic. No coarse fragments. Many fine roots and well drained. Clear boundary.
B21	0.20 – 0.40	Dark Reddish-Brown (Munsell 2.5YR 2.5/4) Light Clay, with strong pedality. Neutral pH, non-saline. Non-sodic. No coarse fragments. Few fine roots and moderately drained. Gradual boundary.
B22	0.40 – 0.90	Reddish-Brown (Munsell 2.5YR 5/4) Heavy Clay trending to Medium Clay, with moderate pedality. Neutral pH, non-saline. Non-sodic. No coarse fragments. No roots and moderately drained.

Sample Depth	ECe		pH _(1.5water)		ESP	
	dS/m	Rating	Value	Rating	Value	Rating
0-0.10	1.1	Non-saline	5.8	Moderately Acidic	0.4	Non-sodic
0.20-0.30	0.3	Non-saline	6.7	Neutral	0.7	Non-sodic
0.40-0.50	0.2	Non-saline	6.6	Neutral	0.9	Non-sodic
0.65-0.75	0.2	Non-saline	6.8	Neutral	1.3	Non-sodic



Site Description – Site C8

Site Reference	C8	ASC Name	Epipedal Red Vertosol	
Average Slope	4%	Land Use	Grazing	Coordinates
Landform Pattern	Hillcrest	Soil Fertility	Moderately High	MGA 55
Landform Element	Broad Crest	BSAL Site Status	Verified BSAL	X: 688309
Surface Condition	Soft	Mapped as BSAL	No	Y: 6285714



Plate 1 – Soil Profile (C8)



Plate 2 – Surface (C8)



Plate 3 – Landscape (C8)

Horizon	Depth (m)	Description
A1	0.00 – 0.25	Shallow, skeletal soil with high coarse fragment content. No samples collected for laboratory analysis due to depth limitation associated with this unit.



Site Description – Site C9				
Site Reference	C9	ASC Name	Brown Dermosol	
Average Slope	2%	Land Use	Grazing	Coordinates
Landform Pattern	Hillcrest	Soil Fertility	Moderate	MGA 55
Landform Element	Broad Crest	BSAL Site Status	Verified Non BSAL	X: 688019
Surface Condition	Soft	Mapped as BSAL	No	Y: 6287254



Plate 1 – Soil Profile (C9)



Plate 2 – Surface (C9)



Plate 3 – Landscape (C9)

Horizon	Depth (m)	Description
A1	0.00 – 0.20	Brown Loam (field assessment), with moderate pedality. No coarse fragments. Common fine roots and moderately drained. Gradual boundary.
B2	0.20 – 0.50	Yellowish Brown Clay Loam (field assessment), with moderate pedality. <5% coarse fragments. Very few fine roots and moderately drained.
B/C	0.50+	Weathered rock parent material. 90% coarse fragments.

No laboratory sample analysis due to soil depth limitation associated with this unit.



Site Description – Site C10

Site Reference	C10	ASC Name	Haplic Eutrophic Brown Dermosol (BELOV)	
Average Slope	1%	Land Use	Grazing	Coordinates
Landform Pattern	Hillcrest	Soil Fertility	Moderately High	MGA 55
Landform Element	Broad Crest	BSAL Site Status	Verified BSAL	X: 687984
Surface Condition	Soft	Mapped as BSAL	Yes	Y: 6286924



Plate 1 – Soil Profile (C10)



Plate 2 – Surface (C10)



Plate 3 – Landscape (C10)

Horizon	Depth (m)	Description
A1	0.00 – 0.20	Dark Yellowish-Brown (Munsell 10YR 4/4) Loam, with weak pedality. Strongly acidic pH, non-saline. Non-sodic. No coarse fragments. Many fine roots and well drained. Gradual boundary.
B2	0.20 – 0.70	Brown to Reddish-Brown (Munsell 7.5YR 4/4 to 5YR 4/4) Clay Loam to Light Clay, with moderate pedality. Strongly acidic trending to neutral pH, non-saline. Non-sodic. No coarse fragments. Few fine roots and well drained. Gradual boundary.
B/C	0.70 +	Yellowish-Brown (Munsell 10YR 5/4) Clay Loam, with weak pedality. Neutral pH, non-saline. Non-sodic. No coarse fragments. No roots and moderately drained.

Sample Depth	ECe		pH _(1-5water)		ESP	
	dS/m	Rating	Value	Rating	Value	Rating
0-0.10	0.7	Non-saline	5.0	Strongly Acidic	1.0	Non-sodic
0.20-0.30	0.4	Non-saline	5.2	Strongly Acidic	0.8	Non-sodic
0.40-0.50	0.1	Non-saline	6.6	Neutral	0.8	Non-sodic
0.65-0.75	0.1	Non-saline	6.9	Neutral	1.5	Non-sodic



Site Description – Site C11

Site Reference	C11	ASC Name	Mottled Eutrophic Brown Chromosol (BHLOWNR)	
Average Slope	3%	Land Use	Grazing	Coordinates
Landform Pattern	Hillslope	Soil Fertility	Moderately High	MGA 55
Landform Element	Mid Slope	BSAL Site Status	Verified BSAL	X: 688517
Surface Condition	Soft	Mapped as BSAL	Yes	Y: 6286848



Plate 1 – Soil Profile (C11)



Plate 2 – Surface (C11)



Plate 3 – Landscape (C11)

Horizon	Depth (m)	Description				
A1	0.00 – 0.20	Dark Brown (Munsell 7.5YR 3/4) Loam, with moderate pedality. Strongly acidic pH, non-saline. Non-sodic. <5% coarse fragments. Many fine roots and moderately drained. Clear boundary.				
B21	0.20 – 0.35	Strong Brown (Munsell 7.5YR 4/6) Light Medium Clay, with moderate pedality. Neutral pH, non-saline. Non-sodic. 80% coarse fragments 5 – 10mm. No roots and moderately drained. Clear boundary.				
B22	0.35 – 0.60	Yellowish Red (Munsell 5YR 4/6) Heavy Clay, with moderate pedality. Neutral pH, non-saline. Non-sodic. No coarse fragments. No roots and moderately drained. Gradual boundary.				
B23	0.60 – 0.90	Greyish-Brown (Munsell 10YR 5/2) Heavy Clay, with moderate pedality. Mildly alkaline pH, non-saline. Non-sodic. No coarse fragments. No roots and moderately drained. Clear boundary.				
Sample Depth	ECe		pH _(1-5water)		ESP	
	dS/m	Rating	Value	Rating	Value	Rating
0-0.10	0.7	Non-saline	5.2	Strongly Acidic	0.8	Non-sodic
0.20-0.30	0.1	Non-saline	6.7	Neutral	0.9	Non-sodic
0.40-0.50	0.1	Non-saline	6.9	Neutral	3.7	Non-sodic
0.65-0.75	0.3	Non-saline	7.8	Mildly Alkaline	4.0	Non-sodic



Site Description – Site C12

Site Reference	C12	ASC Name	Haplic Eutrophic Red Dermosol (BELOW)	
Average Slope	9%	Land Use	Grazing	Coordinates
Landform Pattern	Hillcrest	Soil Fertility	Moderately High	MGA 55
Landform Element	Mid Slope	BSAL Site Status	Verified BSAL	X: 688737
Surface Condition	Soft	Mapped as BSAL	Yes	Y: 6286949



Plate 1 – Soil Profile (C12)



Plate 2 – Surface (C12)



Plate 3 – Landscape (C12)

Horizon	Depth (m)	Description
A1	0.00 – 0.10	Dark Brown (Munsell 7.5YR 3/4) Loam, with moderate pedality. Strongly acidic pH, non-saline. Non-sodic. No coarse fragments. Many fine roots and well drained. Gradual boundary.
B2	0.10 – 0.90	Yellowish Red (Munsell 5YR 4/6) Clay Loam to Light Medium Clay, with moderate pedality. Moderately acidic trending to neutral pH, non-saline. Non-sodic. No coarse fragments. Few large roots and well drained. Gradual boundary.

Sample Depth	ECe		pH _(1-5water)		ESP	
	dS/m	Rating	Value	Rating	Value	Rating
0-0.10	0.9	Non-saline	5.1	Strongly Acidic	0.4	Non-sodic
0.20-0.30	0.5	Non-saline	5.8	Moderately Acidic	0.6	Non-sodic
0.40-0.50	0.8	Non-saline	6.3	Slightly Acidic	0.9	Non-sodic
0.65-0.75	0.7	Non-saline	6.7	Neutral	1.7	Non-sodic



Site Description – Site C13

Site Reference	C13	ASC Name	Manganic Eutrophic Red Dermosol (BEMOW)	
Average Slope	4%	Land Use	Grazing	Coordinates
Landform Pattern	Hillslope	Soil Fertility	Moderately High	MGA 55
Landform Element	Mid Slope	BSAL Site Status	Verified Non-BSAL	X: 688479
Surface Condition	Soft	Mapped as BSAL	No	Y: 6287284



Plate 1 – Soil Profile (C13)



Plate 2 – Surface (C13)



Plate 3 – Landscape (C13)

Horizon	Depth (m)	Description
A1	0.00 – 0.15	Dark Brown (Munsell 7.5YR 3/4) Clay Loam, with moderate pedality. Very strongly acidic pH, non-saline. Non-sodic. No coarse fragments. Many fine roots and well drained. Gradual boundary.
B21	0.15 – 0.50	Reddish-Brown (Munsell 5YR 4/4) Clay loam trending to Light Medium Clay, with strong pedality. Moderately acidic trending to neutral pH, non-saline. Non-sodic. No coarse fragments. Few fine roots and well drained. Gradual boundary.
B22	0.50 – 0.80	Reddish-Brown (Munsell 5YR 4/4) Light Clay trending to Medium Clay, with strong pedality. Neutral pH, non-saline. Non-sodic. No coarse fragments. No roots and well drained.

Sample Depth	ECe		pH _(1-5water)		ESP	
	dS/m	Rating	Value	Rating	Value	Rating
0-0.10	1.6	Non-saline	4.8	Very Strongly Acidic	0.6	Non-sodic
0.20-0.30	0.3	Non-saline	5.7	Moderately Acidic	1.0	Non-sodic
0.40-0.50	0.2	Non-saline	6.7	Neutral	1.0	Non-sodic
0.65-0.75	0.1	Non-saline	6.9	Neutral	1.7	Non-sodic



Site Description – Site C14

Site Reference	C14	ASC Name	Brown Dermosol	
Average Slope	12%	Land Use	Grazing	Coordinates
Landform Pattern	Hillslope	Soil Fertility	Moderate	MGA 55
Landform Element	Mid Slope	BSAL Site Status	Verified Non-BSAL	X: 688483
Surface Condition	Soft	Mapped as BSAL	No	Y: 6287726



Plate 1 – Soil Profile (C15)



Plate 2 – Surface (C14)



Plate 3 – Landscape (C14)

Horizon	Depth (m)	Description
A1	0.00 – 0.10	Brown Loam (field assessment), with moderate pedality. No coarse fragments. Many fine roots and moderately drained. Gradual boundary.
B2	0.10 – 0.40	Reddish-Brown Clay Loam (field assessment), with moderate pedality. No coarse fragments. Few fine roots and poorly drained. Gradual boundary.
B/C	0.40 – 0.60	Weathered rock parent material.

No laboratory sample analysis due to soil depth limitation associated with this unit.



Site Description – Site C16

Site Reference	C16	ASC Name	Brown Dermosol	
Average Slope	12%	Land Use	Grazing	Coordinates
Landform Pattern	Hillslope	Soil Fertility	Moderate	MGA 55
Landform Element	Mid Slope	BSAL Site Status	Verified Non-BSAL	X: 688835
Surface Condition	Soft	Mapped as BSAL	No	Y: 6288110



Plate 1 – Soil Profile (C16)



Plate 2 – Surface (C16)



Plate 3 – Landscape (C16)

Horizon	Depth (m)	Description
A1	0.00 – 0.15	Brown Sandy Loam (field assessment) with moderate pedality. No coarse fragments. Many fine roots and well drained. Gradual boundary.
A2	0.15 – 0.55	Light Brown Loamy Sand (field assessment) with weak pedality. Neutral pH, non-saline. Non-sodic. No coarse fragments. Few fine roots and moderately drained. Gradual boundary.
B2	0.55+	Brown Medium Clay (field assessment) with strong pedality. No coarse fragments. No roots and moderately drained.

No laboratory sample analysis due to slope limitations (>10% slope) associated with this soil unit.



Site Description – Site C22

Site Reference	C22	ASC Name	Vertic Eutrophic Brown Chromosol (BELOWNR)	
Average Slope	6%	Land Use	Grazing	Coordinates
Landform Pattern	Hillslope	Soil Fertility	Moderately High	MGA 55
Landform Element	Mid Slope	BSAL Site Status	Verified Non-BSAL	X: 688035
Surface Condition	Soft	Mapped as BSAL	No	Y: 6288655



Plate 1 – Soil Profile (C22)



Plate 2 – Surface (C22)



Plate 3 – Landscape (C22)

Horizon	Depth (m)	Description				
A1	0.00 – 0.15	Dark Brown (Munsell 7.5YR 3/4) Loam, with weak pedality. Very strongly acidic pH, slightly saline. Non-sodic. No coarse fragments. Many fine roots and moderately drained. Clear boundary.				
B21	0.15 – 0.35	Strong Brown (Munsell 7.5YR 4/6) Heavy Clay, with strong pedality. Neutral pH, non-saline. Non-sodic. No coarse fragments. Few fine roots and moderately drained. Gradual boundary.				
B22	0.35+	Yellowish-Brown to Reddish-Yellow (Munsell 10YR 5/8 to 7.5YR 6/8) Heavy Clay with strong pedality. Neutral trending to mildly alkaline pH, non-saline. Non-sodic. No coarse fragments. No roots and moderately drained.				
Sample Depth	ECe		pH _(1-5water)		ESP	
	dS/m	Rating	Value	Rating	Value	Rating
0-0.10	3.5	Slightly saline	4.8	Very Strongly Acidic	1.9	Non-sodic
0.20-0.30	0.2	Non-saline	6.9	Neutral	1.7	Non-sodic
0.40-0.50	0.1	Non-saline	7.2	Neutral	3.0	Non-sodic
0.65-0.75	0.2	Non-saline	7.6	Mildly Alkaline	4.8	Non-sodic



Site Description – Site C23

Site Reference	C23	ASC Name	Brown Dermosol	
Average Slope	4%	Land Use	Grazing	Coordinates
Landform Pattern	Hillslope	Soil Fertility	Moderate	MGA 55
Landform Element	Mid Slope	BSAL Site Status	Verified Non-BSAL	X: 688044
Surface Condition	Soft	Mapped as BSAL	No	Y: 6288185



Plate 1 – Soil Profile (C23)



Plate 2 – Surface (C23)



Plate 3 – Landscape (C23)

Horizon	Depth (m)	Description
A1	0.00 – 0.15	Dark Loam (field assessment), with moderate pedality. No coarse fragments. Many fine roots and well drained. Gradual boundary.
B2	0.15 – 0.60	Brown Clay Loam (field assessment), with moderate pedality. No coarse fragments. Few fine roots and moderately drained. Clear boundary.
BC	0.60+	100% coarse fragments in the form of gravel.

No laboratory sample analysis due to soil depth limitations associated with this unit.



Site Description – Site C24

Site Reference	C24	ASC Name	Haplic Eutrophic Red Chromosol (BEMOWNR)	
Average Slope	3%	Land Use	Grazing	Coordinates
Landform Pattern	Hillslope	Soil Fertility	Moderately High	MGA 55
Landform Element	Upper Slope	BSAL Site Status	Verified BSAL	X: 687950
Surface Condition	Soft	Mapped as BSAL	Yes	Y: 6287795



Plate 1 – Soil Profile (C24)



Plate 2 – Surface (C24)



Plate 3 – Landscape (C24)

Horizon	Depth (m)	Description				
A1	0.00 – 0.10	Very Dark Brown (Munsell 10YR 2/2) Clay Loam, with moderate pedality. Mildly alkaline pH, slightly saline. Non-sodic. No coarse fragments. Many fine roots and well drained. Clear boundary.				
B21	0.10 – 0.60	Yellowish-Red (Munsell 5YR 5/8 to 2.5YR 2.5/4) Light Medium Clay, with strong pedality. Slightly acidic to neutral pH, slightly saline. Non-sodic. No coarse fragments. Very few fine roots and well drained. Gradual boundary.				
B22	0.60+	Dark Reddish-Brown to Yellowish-Red (Munsell 5YR 4/6) Medium Clay to Light Clay with strong pedality. Mildly alkaline trending to moderately alkaline pH, slightly saline to non-saline. Non-sodic. No coarse fragments. No roots and well drained.				
Sample Depth	ECe		pH _(1.5water)		ESP	
	dS/m	Rating	Value	Rating	Value	Rating
0-0.10	2.3	Slightly saline	7.7	Mildly Alkaline	0.2	Non-sodic
0.20-0.30	2.5	Slightly saline	6.4	Slightly Acidic	0.8	Non-sodic
0.40-0.50	2.6	Slightly saline	6.8	Neutral	1.1	Non-sodic
0.65-0.75	1.6	Non-saline	7.1	Neutral	2.0	Non-sodic



Site Description – Site C25

Site Reference	C25	ASC Name	Manganic Eutrophic Brown Chromosol (BFMOWNR)	
Average Slope	2%	Land Use	Grazing	Coordinates
Landform Pattern	Drainage Line	Soil Fertility	Moderately High	MGA 55
Landform Element	Drainage Line	BSAL Site Status	Verified BSAL	X: 687167
Surface Condition	Soft	Mapped as BSAL	Yes	Y: 6287704



Plate 1 – Soil Profile (C25)



Plate 2 – Surface (C25)



Plate 3 – Landscape (C25)

Horizon	Depth (m)	Description
A1	0.00 – 0.10	Dark Grey (Munsell 5Y 4/1) Clay Loam, with moderate pedality. Strongly acidic pH, non-saline. Non-sodic. No coarse fragments. Many fine roots and moderately drained. Clear boundary.
A2	0.10 – 0.30	Dark Greyish-Brown (Munsell 2.5Y 4/2) Clay Loam, with weak pedality. Neutral pH, non-saline. Non-sodic. No coarse fragments. Few fine roots and moderately drained. Clear boundary.
B2	0.30+	Yellowish-Brown to Light-Olive Brown (Munsell 10YR 5/4 to 2.5Y 5/3) Medium Clay to Heavy Clay with strong pedality. Neutral pH, non-saline. Non-sodic. No coarse fragments. No roots and moderately drained.

Sample Depth	ECe		pH _(1.5water)		ESP	
	dS/m	Rating	Value	Rating	Value	Rating
0-0.10	2.0	Non-saline	5.1	Strongly Acidic	0.8	Non-sodic
0.20-0.30	0.2	Non-saline	6.7	Neutral	2.3	Non-sodic
0.40-0.50	0.3	Non-saline	6.9	Neutral	1.5	Non-sodic
0.65-0.75	0.2	Non-saline	7.2	Neutral	4.2	Non-sodic



Site Description – Site C26

Site Reference	C26	ASC Name	Vertic Eutrophic Red Chromosol (BFLOVNR)	
Average Slope	4%	Land Use	Grazing	Coordinates
Landform Pattern	Hillslope	Soil Fertility	Moderately High	MGA 55
Landform Element	Mid Slope	BSAL Site Status	Verified Non-BSAL	X: 687163
Surface Condition	Soft	Mapped as BSAL	No	Y: 6288090



Plate 1 – Soil Profile (C26)



Plate 2 – Surface (C26)



Plate 3 – Landscape (C26)

Horizon	Depth (m)	Description				
A1	0.00 – 0.20	Very Dark Greyish-Brown (Munsell 10YR 3/2) Loam, with moderate pedality. Very strongly acidic pH, non-saline. Non-sodic. No coarse fragments. Many fine roots and well drained. Clear boundary.				
B21	0.20 – 0.60	Dusky Red to Red (Munsell 2.5YR 3/2 to 10R 4/8) Heavy Clay, with strong pedality. Moderately acidic to slightly acidic pH, non-saline. Non-sodic. No coarse fragments. No roots and moderately drained. Gradual boundary.				
B22	0.60 – 0.75	Dark Greyish-Brown (Munsell 2.5Y 4/2) Heavy Clay to Light Medium Clay with strong pedality. Neutral pH, non-saline. Non-sodic. 10% coarse fragments. No roots and poorly drained. Clear boundary.				
Sample Depth	ECe		pH _(1-5water)		ESP	
	dS/m	Rating	Value	Rating	Value	Rating
0-0.10	1.0	Non-saline	4.9	Very Strongly Acidic	0.7	Non-sodic
0.20-0.30	0.2	Non-saline	5.8	Moderately Acidic	0.8	Non-sodic
0.40-0.50	0.3	Non-saline	6.4	Slightly Acidic	2.8	Non-sodic
0.65-0.75	0.3	Non-saline	7.1	Neutral	3.1	Non-sodic



Site Description – Site C28

Site Reference	C28	ASC Name	Eutrophic Subnatric Brown Sodosol (BFLOWNR)	
Average Slope	0%	Land Use	Grazing	Coordinates
Landform Pattern	Drainage Line	Soil Fertility	Moderately Low	MGA 55
Landform Element	Drainage Line	BSAL Site Status	Verified Non-BSAL	X: 687584
Surface Condition	Soft	Mapped as BSAL	No	Y: 6287740



Plate 1 – Soil Profile (C28)



Plate 2 – Surface (C28)



Plate 3 – Landscape (C28)

Horizon	Depth (m)	Description
A1	0.00 – 0.10	Dark Greyish Brown (Munsell 2.5Y 4/2) Silty Loam, with moderate pedality. Strongly acidic pH, non-saline. Non-sodic. No coarse fragments. Many fine roots and moderately drained. Gradual boundary.
A2	0.10 – 0.40	Light Grey (Munsell 5Y 7/1) Silty Loam. Apedal structure. Moderately acidic pH, non-saline. Non-sodic. No coarse fragments. Few fine roots and poorly drained. Clear boundary.
B2	0.40 – 1.00	Dark Greyish Brown (Munsell 2.5Y 4/2 to 10YR 4/2) Medium Clay to Heavy Clay with strong pedality. Neutral pH, non-saline. Sodic. No coarse fragments. No roots and poorly drained.

Sample Depth	ECe		pH _(1.5water)		ESP	
	dS/m	Rating	Value	Rating	Value	Rating
0-0.10	1.0	Non-saline	5.3	Strongly Acidic	3.7	Non-sodic
0.20-0.30	0.3	Non-saline	5.7	Moderately Acidic	5.9	Non-sodic
0.40-0.50	0.3	Non-saline	6.7	Neutral	7.3	Sodic
0.65-0.75	0.4	Non-saline	7.0	Neutral	9.4	Sodic



Site Description – Site C29

Site Reference	C29	ASC Name	Vertic Eutrophic Brown Chromosol (BEMOWNR)	
Average Slope	3%	Land Use	Grazing	Coordinates
Landform Pattern	Hillslope	Soil Fertility	Moderately High	MGA 55
Landform Element	Lower Slope	BSAL Site Status	Verified Non-BSAL	X: 687652
Surface Condition	Soft	Mapped as BSAL	No	Y: 6287263



Plate 1 – Soil Profile (C29)



Plate 2 – Surface (C29)



Plate 3 – Landscape (C29)

Horizon	Depth (m)	Description
A1	0.00 – 0.20	Dark Yellowish-Brown (Munsell 10YR 3/4) Loam, with moderate pedality. Very strongly acidic pH, non-saline. Non-sodic. No coarse fragments. Many fine roots and moderately drained. Clear boundary.
B21	0.20 – 0.60	Brown to Dark Yellowish-Brown (Munsell 10YR 4/3 to 10YR 3/4) Light Medium Clay, with strong pedality. Moderately acidic pH, non-saline. Non-sodic. No coarse fragments. Very few roots and moderately drained. Gradual boundary.
B22	0.60+	Olive Yellow (Munsell 2.5Y 6/6) Heavy Clay with strong pedality. Strongly acidic trending to neutral pH, non-saline. Non-sodic. No coarse fragments. No roots and moderately drained.

Sample Depth	ECe		pH _(1-5water)		ESP	
	dS/m	Rating	Value	Rating	Value	Rating
0-0.10	1.6	Non-saline	4.6	Very Strongly Acidic	2.1	Non-sodic
0.20-0.30	1.2	Non-saline	5.3	Strongly Acidic	1.9	Non-sodic
0.40-0.50	0.1	Non-saline	6.7	Neutral	1.5	Non-sodic
0.65-0.75	0.2	Non-saline	7.1	Neutral	2.3	Non-sodic



Site Description – Site C30

Site Reference	C30	ASC Name	Haplic Epipedal Black Vertosol (ESSW)	
Average Slope	4%	Land Use	Grazing	Coordinates
Landform Pattern	Hillslope	Soil Fertility	High	MGA 55
Landform Element	Mid Slope	BSAL Site Status	Verified BSAL	X: 687144
Surface Condition	Soft	Mapped as BSAL	Yes	Y: 6285938



Plate 1 – Soil Profile (C30)



Plate 2 – Surface (C30)



Plate 3 – Landscape (C30)

Horizon	Depth (m)	Description				
A1	0.00 – 0.15	Very Dark Brown (Munsell 10YR 2/2) Heavy Clay, with strong pedality. Very strongly acidic pH, non-saline. Non-sodic. No coarse fragments. Many roots and moderately drained. Gradual boundary.				
B21	0.15 – 0.40	Very Dark Greyish-Brown (Munsell 10YR 3/2) Heavy Clay, with strong pedality. Strongly acidic pH, non-saline. Non-sodic. No coarse fragments. Common roots and moderately drained. Gradual boundary.				
B22	0.40 – 0.80	Dark Olive-Brown to Very Dark Grey (Munsell 2.5Y 3/3 to 5Y 3/1) Heavy Clay, with moderate pedality. Neutral to moderately alkaline pH, non-saline. Non-sodic. No coarse fragments. No roots and moderately drained.				
Sample Depth	ECe		pH _(1-5water)		ESP	
	dS/m	Rating	Value	Rating	Value	Rating
0-0.10	1.6	Non-saline	4.6	Very Strongly Acidic	0.8	Non-sodic
0.20-0.30	1.2	Non-saline	5.3	Strongly Acidic	1.4	Non-sodic
0.40-0.50	0.1	Non-saline	6.7	Neutral	2.1	Non-sodic
0.65-0.75	0.2	Non-saline	7.1	Neutral	4.3	Non-sodic



Site Description – Site C31

Site Reference	C31	ASC Name	Vertic Eutrophic Red Chromosol (BFMOWNR)	
Average Slope	8%	Land Use	Grazing	Coordinates
Landform Pattern	Hillslope	Soil Fertility	Moderately High	MGA 55
Landform Element	Mid Slope	BSAL Site Status	Verified BSAL	X: 687131
Surface Condition	Soft	Mapped as BSAL	Yes	Y: 6286377



Plate 1 – Soil Profile (C31)



Plate 2 – Surface (C31)



Plate 3 – Landscape (C31)

Horizon	Depth (m)	Description
A1	0.00 – 0.20	Dusky Red (Munsell 10R 3/4) Clay Loam, with strong pedality. Strongly acidic pH, non-saline. Non-sodic. No coarse fragments. Many fine roots and well drained. Clear boundary.
B2	0.20+	Dark Red (Munsell 10R 3/6) Heavy Clay trending to Medium Clay, with strong pedality. Neutral trending to mildly alkaline pH, non-saline. Non-sodic. No coarse fragments. Very few fine roots and well drained.

Sample Depth	ECe		pH _(1-5water)		ESP	
	dS/m	Rating	Value	Rating	Value	Rating
0-0.10	1.5	Non-saline	5.4	Strongly Acidic	0.8	Non-sodic
0.20-0.30	0.2	Non-saline	6.7	Neutral	0.8	Non-sodic
0.40-0.50	0.3	Non-saline	6.8	Neutral	0.8	Non-sodic
0.65-0.75	0.2	Non-saline	7.3	Mildly Alkaline	0.7	Non-sodic



Site Description – Site C32

Site Reference	C32	ASC Name	Haplic Eutrophic Red Dermosol (BELOW)	
Average Slope	1%	Land Use	Grazing	Coordinates
Landform Pattern	Hillcrest	Soil Fertility	Moderately High	MGA 55
Landform Element	Crest	BSAL Site Status	Verified BSAL	X: 687114
Surface Condition	Soft	Mapped as BSAL	Yes	Y: 6286649



Plate 1 – Soil Profile (C32)



Plate 2 – Surface (C32)



Plate 3 – Landscape (C32)

Horizon	Depth (m)	Description
A1	0.00 – 0.15	Dark Reddish-Brown (Munsell 5YR 3/3) Loam, with strong pedality. Moderately acidic pH, non-saline. Non-sodic. No coarse fragments. Many fine roots and well drained. Gradual boundary.
B21	0.15 – 0.30	Dark Red (Munsell 10R 3/6) Clay Loam, with strong pedality. Slightly acidic to neutral pH, non-saline. Non-sodic. No coarse fragments. Very few fine roots and well drained. Gradual boundary.
B22	0.30+	Dark Red to Red (Munsell 10R 3/6 to 10R 4/6) Light Clay trending to Light Medium Clay, with strong pedality. Slightly acidic to neutral pH, non-saline. Non-sodic. No coarse fragments. Very few fine roots and well drained.

Sample Depth	ECe		pH _(1.5water)		ESP	
	dS/m	Rating	Value	Rating	Value	Rating
0-0.10	0.8	Non-saline	5.6	Moderately Acidic	0.5	Non-sodic
0.20-0.30	0.6	Non-saline	6.4	Slightly Acidic	0.5	Non-sodic
0.40-0.50	0.8	Non-saline	6.7	Neutral	1.5	Non-sodic
0.65-0.75	0.4	Non-saline	7.2	Neutral	1.0	Non-sodic



Site Description – Site C33

Site Reference	C33	ASC Name	Haplic Eutrophic Red Dermosol (BELOW)	
Average Slope	4%	Land Use	Grazing	Coordinates
Landform Pattern	Hillslope	Soil Fertility	Moderately High	MGA 55
Landform Element	Mid Slope	BSAL Site Status	Verified BSAL	X: 686671
Surface Condition	Soft	Mapped as BSAL	Yes	Y: 6286339



Plate 1 – Soil Profile (C33)



Plate 2 – Surface (C33)



Plate 3 – Landscape (C33)

Horizon	Depth (m)	Description
A1	0.00 – 0.15	Dark Brown (Munsell 7.5YR 3/3) Silty Loam, with strong pedality. Strongly acidic pH, non-saline. Non-sodic. No coarse fragments. Many fine roots and well drained. Gradual boundary.
B2	0.15+	Red to Light Red (Munsell 10R 4/8 to 2.5YR 6/8) Clay Loam trending to Medium Clay, with strong pedality. Slightly acidic to neutral pH, non-saline. Non-sodic. No coarse fragments. Very few roots and well drained.

Sample Depth	ECe		pH _(1-5water)		ESP	
	dS/m	Rating	Value	Rating	Value	Rating
0-0.10	0.7	Non-saline	5.3	Strongly Acidic	0.4	Non-sodic
0.20-0.30	0.4	Non-saline	6.5	Slightly Acidic	0.5	Non-sodic
0.40-0.50	0.5	Non-saline	6.7	Neutral	0.7	Non-sodic
0.65-0.75	0.4	Non-saline	7.0	Neutral	1.1	Non-sodic



Site Description – Site C34

Site Reference	C34	ASC Name	Manganic Eutrophic Brown Dermosol (BFLOW)	
Average Slope	5%	Land Use	Grazing	Coordinates
Landform Pattern	Hillslope	Soil Fertility	Moderately High	MGA 55
Landform Element	Upper Slope/Crest	BSAL Site Status	Verified BSAL	X: 686228
Surface Condition	Soft	Mapped as BSAL	Yes	Y: 6285903



Plate 1 – Soil Profile (C34)



Plate 2 – Surface (C34)



Plate 3 – Landscape (C34)

Horizon	Depth (m)	Description
A1	0.00 – 0.10	Dark Brown (Munsell 7.5YR 3/4) Loam, with strong pedality. Moderately acidic pH, non-saline. Non-sodic. No coarse fragments. Many fine roots and moderately drained. Gradual boundary.
B21	0.10 – 0.50	Dark Brown (Munsell 7.5YR 3/4 to 10YR 3/3) Loam to Clay Loam, with strong pedality. Neutral to mildly alkaline pH, non-saline. Non-sodic. No coarse fragments. Few fine roots and moderately drained. Gradual boundary.
B22	0.50 – 0.90	Dark Brown to Brown (Munsell 10YR 4/3) Light Clay with strong pedality. Moderately alkaline pH, non-saline. Non-sodic. No coarse fragments. No roots and moderately drained.

Sample Depth	ECe		pH _(1-5water)		ESP	
	dS/m	Rating	Value	Rating	Value	Rating
0-0.10	0.6	Non-saline	6.0	Moderately Acidic	0.8	Non-sodic
0.20-0.30	0.4	Non-saline	6.8	Neutral	0.9	Non-sodic
0.40-0.50	0.5	Non-saline	7.3	Mildly Alkaline	1.3	Non-sodic
0.65-0.75	0.4	Non-saline	7.8	Moderately Alkaline	4.0	Non-sodic



Site Description – Site C35

Site Reference	C35	ASC Name	Brown Vertosol	
Average Slope	5%	Land Use	Grazing	Coordinates
Landform Pattern	Hillslope	Soil Fertility	Moderately High	MGA 55
Landform Element	Mid Slope	BSAL Site Status	Verified Non-BSAL	X: 686286
Surface Condition	Soft	Mapped as BSAL	No	Y: 6285054



Plate 1 – Soil Profile (C5)



Plate 2 – Surface (C35)



Plate 3 – Landscape (C35)

Horizon	Depth (m)	Description
A1	0.00 – 0.10	Brown Clay Loam (field assessment), with moderate pedality. No coarse fragments. Many fine roots and well drained. Gradual boundary.
B2	0.10 – 0.60	Brown Clay (field assessment), with strong pedality. No coarse fragments. Few fine roots and moderately drained. Gradual boundary.
C	0.60+	Weathered parent material.

No laboratory sample analysis due to limited soil depth and presence of extensive surface rock outcrop associated with this soil unit.



Site Description – Site C36

Site Reference	C36	ASC Name	Bleached Eutrophic Brown Chromosol (BGLOWNR)	
Average Slope	4%	Land Use	Grazing	Coordinates
Landform Pattern	Hillslope	Soil Fertility	Moderately High	MGA 55
Landform Element	Lower Slope	BSAL Site Status	Verified Non-BSAL	X: 685806
Surface Condition	Soft	Mapped as BSAL	No	Y: 6285109



Plate 1 – Soil Profile (C36)



Plate 2 – Surface (C36)



Plate 3 – Landscape (C36)

Horizon	Depth (m)	Description
A1	0.00 – 0.10	Very Dark Greyish Brown (Munsell 2.5Y 3/2) Silty Loam, with moderate pedality. Neutral pH, non-saline. Non-sodic. No coarse fragments. Many fine roots and moderately drained. Gradual boundary.
A2	0.10 – 0.35	Olive Brown (Munsell 2.5Y 4/3) Loam, with weak pedality. Slightly acidic pH, non-saline. Non-sodic. 20% coarse fragments <5mm. Few fine roots and poorly drained. Clear boundary.
B2	0.35+	Dark Grey to Olive (Munsell 10YR 4/1 to 5Y 4/3) Heavy Clay with strong pedality. Neutral trending to moderately alkaline pH, non-saline. Non-sodic. No coarse fragments. No roots and poorly drained.

Sample Depth	ECe		pH _(1-5water)		ESP	
	dS/m	Rating	Value	Rating	Value	Rating
0-0.10	0.8	Non-saline	7.1	Neutral	1.9	Non-sodic
0.20-0.30	0.5	Non-saline	6.5	Slightly Acidic	1.1	Non-sodic
0.40-0.50	0.3	Non-saline	7.2	Neutral	1.7	Non-sodic
0.65-0.75	0.3	Non-saline	8.2	Moderately Alkaline	3.2	Non-sodic



Site Description – Site C37

Site Reference	C37	ASC Name	Bleached Eutrophic Brown Chromosol (BFKOWNR)	
Average Slope	4%	Land Use	Grazing	Coordinates
Landform Pattern	Hillslope	Soil Fertility	Moderately High	MGA 55
Landform Element	Lower Slope	BSAL Site Status	Verified Non-BSAL	X: 685830
Surface Condition	Soft	Mapped as BSAL	No	Y: 6285450



Plate 1 – Soil Profile (C37)



Plate 2 – Surface (C37)



Plate 3 – Landscape (C37)

Horizon	Depth (m)	Description				
A1	0.00 – 0.20	Very Dark Greyish Brown (Munsell 10YR 3/2) Loamy Sand, with moderate pedality. Very strongly acidic pH, slightly-saline. Non-sodic. No coarse fragments. Many fine roots and moderately drained. Gradual boundary.				
A2	0.20 – 0.40	Grey (Munsell 5Y 6/1) Silty Loam, with weak pedality. Neutral pH, non-saline. Non-sodic. 20% coarse fragments <5mm. No roots and poorly drained. Clear boundary.				
B2	0.40+	Light Olive Brown to Very Dark Greyish Brown Olive (Munsell 2.5Y 5/3 to 2.5Y 3/2) Heavy Clay with strong pedality. Mildly alkaline pH, non-saline. Non-sodic. No coarse fragments. No roots and poorly drained.				
Sample Depth	ECe		pH _(1-5water)		ESP	
	dS/m	Rating	Value	Rating	Value	Rating
0-0.10	2.2	Slightly saline	4.9	Very Strongly Acidic	2.5	Non-sodic
0.20-0.30	0.1	Non-saline	6.7	Neutral	1.8	Non-sodic
0.40-0.50	0.5	Non-saline	7.3	Mildly Alkaline	3.2	Non-sodic
0.65-0.75	0.3	Non-saline	7.5	Mildly Alkaline	3.2	Non-sodic



Site Description – Site C38

Site Reference	C38	ASC Name	-	
Average Slope	3%	Land Use	Grazing	Coordinates
Landform Pattern	Hillcrest	Soil Fertility	-	MGA 55
Landform Element	Crest	BSAL Site Status	Verified Non-BSAL	X: 685810
Surface Condition	Soft	Mapped as BSAL	No	Y: 6285896



Plate 1 – Soil Profile (C38)



Plate 2 – Surface (C38)



Plate 3 – Landscape (C38)

Horizon	Depth (m)	Description
A1	0.00 – 0.10	Brown Clay Loam (field assessment) with strong pedality. Presence of large surface rock. Many fine roots and moderately drained. Gradual boundary.
B/C	0.10+	80% weathered parent material.

No laboratory sample analysis due to soil depth and surface rock limitations associated with this soil unit.



Site Description – Site C39

Site Reference	C39	ASC Name	Mottled Eutrophic Red Chromosol (CEMOWNR)	
Average Slope	6%	Land Use	Grazing	Coordinates
Landform Pattern	Hillslope	Soil Fertility	Moderately High	MGA 55
Landform Element	Mid Slope	BSAL Site Status	Verified BSAL	X: 685260
Surface Condition	Soft	Mapped as BSAL	Yes	Y: 6285470



Plate 1 – Soil Profile (C39)



Plate 2 – Surface (C39)



Plate 3 – Landscape (C39)

Horizon	Depth (m)	Description
A1	0.00 – 0.30	Dark Reddish Brown (Munsell 5YR 3/3) Loam, with moderate pedality. Moderately alkaline pH, non-saline. Non-sodic. No coarse fragments. Many fine roots and moderately drained. Clear boundary.
B21	0.30 – 0.60	Dark Brown to Dark Reddish Brown (Munsell 7.5YR 3/4 to 2.5YR 3/4) Clay Loam, with moderate pedality. Neutral to mildly alkaline pH, non-saline. Non-sodic. No coarse fragments. Few fine roots and moderately drained. Gradual boundary.
B22	0.60+	Dark Yellowish Brown (Munsell to 10YR 3/6) Heavy Clay with moderate pedality. Moderately alkaline pH, non-saline. Non-sodic. No coarse fragments. No roots and moderately drained.

Sample Depth	ECe		pH _(1-5water)		ESP	
	dS/m	Rating	Value	Rating	Value	Rating
0-0.10	0.7	Non-saline	8.0	Moderately Alkaline	4.5	Non-sodic
0.20-0.30	0.3	Non-saline	6.9	Neutral	0.8	Non-sodic
0.40-0.50	0.3	Non-saline	7.7	Mildly Alkaline	1.4	Non-sodic
0.65-0.75	0.3	Non-saline	8.2	Moderately Alkaline	2.1	Non-sodic



Site Description – Site C40

Site Reference	C40	ASC Name	Vertic Eutrophic Black Chromosol (BFMOWNR)	
Average Slope	5%	Land Use	Grazing	Coordinates
Landform Pattern	Hillslope	Soil Fertility	Moderately High	MGA 55
Landform Element	Mid Slope	BSAL Site Status	Verified BSAL	X: 684917
Surface Condition	Soft	Mapped as BSAL	Yes	Y: 6285467



Plate 1 – Soil Profile (C40)



Plate 2 – Surface (C40)



Plate 3 – Landscape (C40)

Horizon	Depth (m)	Description
A1	0.00 – 0.10	Very Dark Brown (Munsell 7.5YR 2.5/3) Clay Loam, with strong pedality. Moderately acidic pH, non-saline. Non-sodic. No coarse fragments. Many fine roots and moderately drained. Clear boundary.
B21	0.10 – 0.50	Black to Very Dark Brown (Munsell 7.5YR 2.5/1 to 10YR 2/2) Heavy Clay, with strong pedality. Neutral trending to moderately alkaline pH, non-saline. Non-sodic. No coarse fragments. Common fine roots and moderately drained. Gradual boundary.
B22	0.50+	Black (Munsell 5Y 2.5/2) Heavy Clay with strong pedality. Neutral trending to moderately alkaline pH, non-saline. Non-sodic. No coarse fragments. Very few roots and moderately drained.

Sample Depth	ECe		pH _(1-5water)		ESP	
	dS/m	Rating	Value	Rating	Value	Rating
0-0.10	0.7	Non-saline	5.9	Moderately Acidic	0.8	Non-sodic
0.20-0.30	0.3	Non-saline	7.1	Neutral	1.4	Non-sodic
0.40-0.50	0.3	Non-saline	7.9	Moderately Alkaline	2.4	Non-sodic
0.65-0.75	0.6	Non-saline	8.3	Moderately Alkaline	3.4	Non-sodic



Site Description – Site C41

Site Reference	C41	ASC Name	Bleached-Sodic Eutrophic Brown Chromosol (BFLOWNR)	
Average Slope	3%	Land Use	Grazing	Coordinates
Landform Pattern	Hillslope	Soil Fertility	Moderately High	MGA 55
Landform Element	Lower Slope	BSAL Site Status	Verified BSAL	X: 684472
Surface Condition	Soft	Mapped as BSAL	Yes	Y: 6285493



Plate 1 – Soil Profile (C41)



Plate 2 – Surface (C41)



Plate 3 – Landscape (C41)

Horizon	Depth (m)	Description				
A1	0.00 – 0.10	Very Dark Brown (Munsell 7.5YR 2.5/3) Silty Loam, with moderate pedality. Very strongly acidic pH, non-saline. Non-sodic. No coarse fragments. Many roots and moderately drained. Clear boundary.				
A2	0.10 – 0.20	Light Grey (Munsell 5Y 7/1) Silty Loam. Apedal structure. Moderately acidic pH, non-saline. Non-sodic. No coarse fragments. Common roots and moderately drained. Abrupt boundary.				
B2	0.20 – 1.00	Olive Brown to Light Olive-Brown (Munsell 2.5Y 4/3 to 2.5Y 5/3) Heavy Clay with strong pedality. Neutral trending to strongly alkaline pH, non-saline. Sodic. No coarse fragments. Few roots and moderately drained.				
Sample Depth	ECe		pH _(1.5water)		ESP	
	dS/m	Rating	Value	Rating	Value	Rating
0-0.10	0.7	Non-saline	5.0	Very Strongly Acidic	3.2	Non-sodic
0.20-0.30	0.2	Non-saline	5.6	Moderately Acidic	2.6	Non-sodic
0.40-0.50	0.3	Non-saline	7.3	Neutral	3.8	Non-sodic
0.65-0.75	0.5	Non-saline	8.8	Strongly Alkaline	6.5	Sodic



Site Description – Site C42

Site Reference	C42	ASC Name	Vertic Eutrophic Black Chromosol (BFLOWNR)	
Average Slope	4%	Land Use	Grazing	Coordinates
Landform Pattern	Hillcrest	Soil Fertility	High	MGA 55
Landform Element	Crest	BSAL Site Status	Verified BSAL	X: 684517
Surface Condition	Soft	Mapped as BSAL	Yes	Y: 6285940



Plate 1 – Soil Profile (C42)



Plate 2 – Surface (C42)



Plate 3 – Landscape (C42)

Horizon	Depth (m)	Description
A1	0.00 – 0.10	Very Dark Grey (Munsell 10YR 3/1) Clay Loam, with moderate pedality. Moderately acidic pH, non-saline. Non-sodic. No coarse fragments. Many fine roots and moderately drained. Clear boundary.
B21	0.10 – 0.40	Dark Brown (Munsell 7.5YR 3/2) Heavy Clay, with strong pedality. Neutral pH, non-saline. Non-sodic. No coarse fragments. Few roots and moderately drained. Clear boundary.
B22	0.40+	Olive Grey to Dark Greyish Brown (Munsell 5Y 4/2 to 2.5Y 4/2) Heavy Clay with strong pedality. Mildly alkaline trending to moderately alkaline pH, non-saline. Non-sodic. No coarse fragments. No roots and moderately drained.

Sample Depth	ECe		pH _(1-5water)		ESP	
	dS/m	Rating	Value	Rating	Value	Rating
0-0.10	0.8	Non-saline	6.0	Moderately Acidic	2.1	Non-sodic
0.20-0.30	0.4	Non-saline	6.6	Neutral	1.3	Non-sodic
0.40-0.50	0.4	Non-saline	7.4	Mildly Alkaline	2.5	Non-sodic
0.65-0.75	0.5	Non-saline	8.2	Moderately Alkaline	4.3	Non-sodic



Site Description – Site C43

Site Reference	C43	ASC Name	Manganic Subnatric Grey Sodosol (BGKOWNR)	
Average Slope	3%	Land Use	Grazing	Coordinates
Landform Pattern	Hillslope	Soil Fertility	Moderately Low	MGA 55
Landform Element	Lower Slope	BSAL Site Status	Verified Non-BSAL	X: 684913
Surface Condition	Soft	Mapped as BSAL	No	Y: 6285942



Plate 1 – Soil Profile (C43)



Plate 2 – Surface (C43)



Plate 3 – Landscape (C43)

Horizon	Depth (m)	Description				
A1	0.00 – 0.10	Dark Greyish Brown (Munsell 2.5Y 4/2) Loamy Sand, with moderate pedality. Slightly acidic pH, non-saline. Non-sodic. No coarse fragments. Many fine roots and moderately drained. Gradual boundary.				
A2	0.10 – 0.35	Grey (Munsell 5Y 5/1) Silty Loam, apedal structure. Slightly acidic pH, non-saline. Non-sodic. 30% coarse fragments <10mm. Very few fine roots and poorly drained. Clear boundary.				
B21	0.35 – 0.60	Brown (Munsell 7.5YR 4/2) Heavy Clay with strong pedality. Neutral pH, non-saline. Non-sodic. No coarse fragments. Very few roots and poorly drained. Gradual boundary.				
B22	0.60 – 1.20	Light Olive Brown (Munsell 2.5Y 5/3) Heavy Clay with strong pedality. Moderately alkaline pH, non-saline. Non-sodic. No coarse fragments. No roots and poorly drained.				
Sample Depth	ECe		pH _(1.5water)		ESP	
	dS/m	Rating	Value	Rating	Value	Rating
0-0.10	2.5	Slightly saline	6.2	Slightly Acidic	1.9	Non-sodic
0.20-0.30	0.4	Non-saline	6.3	Slightly Acidic	2.3	Non-sodic
0.40-0.50	0.7	Non-saline	7.0	Neutral	6.6	Sodic
0.65-0.75	0.8	Non-saline	8.1	Moderately Alkaline	10.9	Sodic



Site Description – Site C44				
Site Reference	C44	ASC Name	Red Dermosol	
Average Slope	3%	Land Use	Grazing	Coordinates
Landform Pattern	Hillslope	Soil Fertility	Moderately High	MGA 55
Landform Element	Lower Slope	BSAL Site Status	Verified Non-BSAL	X: 685295
Surface Condition	Soft	Mapped as BSAL	No	Y: 6285899



Plate 1 – Soil Profile (C44)



Plate 2 – Surface (C44)



Plate 3 – Landscape (C44)

Description

No laboratory sample analysis due to limited soil depth and surface rockiness.



Site Description – Site C45				
Site Reference	C45	ASC Name	Brown Vertosol	
Average Slope	5%	Land Use	Grazing	Coordinates
Landform Pattern	Hillslope	Soil Fertility	Moderately High	MGA 55
Landform Element	Mid Slope	BSAL Site Status	Verified Non-BSAL	X: 684604
Surface Condition	Soft	Mapped as BSAL	No	Y: 6286370



Plate 1 – Soil Profile (C45)



Plate 2 – Surface (C45)



Plate 3 – Landscape (C45)

Description

Shallow soil (0.0 – 0.60). No laboratory sample analysis due to limited soil depth.



Site Description – Site C46

Site Reference	C46	ASC Name	Haplic Eutrophic Red Dermosol (BELOW)	
Average Slope	2%	Land Use	Grazing	Coordinates
Landform Pattern	Hillslope	Soil Fertility	Moderately High	MGA 55
Landform Element	Mid Slope	BSAL Site Status	Verified BSAL	X: 684892
Surface Condition	Soft	Mapped as BSAL	Yes	Y: 6286364



Plate 1 – Soil Profile (C46)



Plate 2 – Surface (C46)



Plate 3 – Landscape (C46)

Horizon	Depth (m)	Description				
A1	0.00 – 0.20	Dark Reddish-Grey (Munsell 5YR 4/2) Loam, with moderate pedality. Moderately acidic pH, non-saline. Non-sodic. No coarse fragments. Many fine roots and moderately drained. Gradual boundary.				
B21	0.20 – 0.50	Reddish-Brown (Munsell 2.5YR 4/4 to 2.5YR 4/4) Loam to Clay Loam, with weak pedality. Neutral pH, non-saline. Non-sodic. No coarse fragments. Few fine roots and moderately drained. Gradual boundary.				
B22	0.50 – 1.00	Olive-Brown (Munsell 2.5Y 4/3) Heavy Clay with strong pedality. Moderately alkaline pH, non-saline. Non-sodic. No coarse fragments. No roots and moderately drained.				
Sample Depth	ECe		pH _(1-5water)		ESP	
	dS/m	Rating	Value	Rating	Value	Rating
0-0.10	1.0	Non-saline	5.6	Moderately Acidic	1.2	Non-sodic
0.20-0.30	0.4	Non-saline	6.7	Neutral	1.1	Non-sodic
0.40-0.50	0.7	Non-saline	7.1	Neutral	2.0	Non-sodic
0.65-0.75	0.3	Non-saline	8.1	Moderately Alkaline	2.6	Non-sodic



Site Description – Site C47

Site Reference	C47	ASC Name	Haplic Eutrophic Red Dermosol (BFMOW)	
Average Slope	4%	Land Use	Grazing	Coordinates
Landform Pattern	Hillslope	Soil Fertility	Moderately High	MGA 55
Landform Element	Upper Slope	BSAL Site Status	Verified BSAL	X: 685334
Surface Condition	Soft	Mapped as BSAL	Yes	Y: 6286382



Plate 1 – Soil Profile (C47)



Plate 2 – Surface (C47)



Plate 3 – Landscape (C47)

Horizon	Depth (m)	Description				
A1	0.00 – 0.10	Very Dusky-Red (Munsell 2.5YR 2.5/2) Silty Loam, with moderate pedality. Strongly acidic pH, non-saline. Non-sodic. No coarse fragments. Many fine roots and moderately drained. Gradual boundary.				
B21	0.10 – 0.40	Dark Reddish-Brown (Munsell 2.5YR 2.5/3) Silty Clay Loam, with strong pedality. Neutral pH, non-saline. Non-sodic. No coarse fragments. Few fine roots and moderately drained. Gradual boundary.				
B22	0.40 – 0.60	Dark Reddish-Brown (Munsell 5YR 3/4) Light Medium Clay, with strong pedality. Neutral pH, non-saline. Non-sodic. No coarse fragments. Few fine roots and moderately drained. Gradual boundary.				
B23	0.60 – 0.90	Dusky-Red (Munsell 10R 3/2) Heavy Clay, with strong pedality. Mildly alkaline pH, non-saline. Non-sodic. No coarse fragments. No roots and moderately drained.				
Sample Depth	ECe		pH _(1.5water)		ESP	
	dS/m	Rating	Value	Rating	Value	Rating
0-0.10	0.5	Non-saline	5.4	Strongly Acidic	1.0	Non-sodic
0.20-0.30	0.2	Non-saline	6.6	Neutral	1.2	Non-sodic
0.40-0.50	0.2	Non-saline	7.2	Neutral	1.1	Non-sodic
0.65-0.75	0.2	Non-saline	7.5	Mildly Alkaline	1.9	Non-sodic



Site Description – Site C48				
Site Reference	C48	ASC Name	Brown Vertosol	
Average Slope	8%	Land Use	Grazing	Coordinates
Landform Pattern	Hillslope	Soil Fertility	Moderate	MGA 55
Landform Element	Mid Slope	BSAL Site Status	Verified Non-BSAL	X: 685810
Surface Condition	Soft	Mapped as BSAL	No	Y: 6286395



Plate 1 – Soil Profile (C48)



Plate 2 – Surface (C48)



Plate 3 – Landscape (C48)

Description

Shallow soil (0.0 – 0.50). No laboratory sample analysis due to limited soil depth.



Site Description – Site C49

Site Reference	C49	ASC Name	Vertic Eutrophic Brown Chromosol (BFLOWNR)	
Average Slope	3%	Land Use	Grazing	Coordinates
Landform Pattern	Drainage Line	Soil Fertility	Moderately High	MGA 55
Landform Element	Lower Slope	BSAL Site Status	Verified BSAL	X: 686190
Surface Condition	Soft	Mapped as BSAL	Yes	Y: 6286378



Plate 1 – Soil Profile (C49)



Plate 2 – Surface (C49)



Plate 3 – Landscape (C49)

Horizon	Depth (m)	Description
A11	0.00 – 0.10	Dark Reddish-Grey (Munsell 2.5YR 3/1) Silty Loam, with moderate pedality. Strongly acidic pH, non-saline. Non-sodic. No coarse fragments. Many fine roots and moderately drained. Gradual boundary.
A12	0.10 – 0.30	Reddish-Brown (Munsell 2.5YR 4/3) Silty Clay Loam, with strong pedality. Slightly acidic pH, non-saline. Non-sodic. No coarse fragments. Common roots and moderately drained. Clear boundary.
B2	0.30 – 1.00	Brown to Light Olive-Brown (Munsell 7.5YR 5/3 to 2.5Y 5/3) Heavy Clay with strong pedality. Neutral trending to moderately alkaline pH, non-saline. Non-sodic. No coarse fragments. Very few roots and moderately drained.

Sample Depth	ECe		pH _(1-5water)		ESP	
	dS/m	Rating	Value	Rating	Value	Rating
0-0.10	0.8	Non-saline	5.2	Strongly Acidic	1.0	Non-sodic
0.20-0.30	0.3	Non-saline	6.4	Slightly Acidic	1.3	Non-sodic
0.40-0.50	0.2	Non-saline	7.2	Neutral	1.7	Non-sodic
0.65-0.75	0.3	Non-saline	8.0	Moderately Alkaline	2.7	Non-sodic



Site Description – Site C50

Site Reference	C50	ASC Name	Vertic Eutrophic Brown Dermosol (BFMOW)	
Average Slope	3%	Land Use	Grazing	Coordinates
Landform Pattern	Hillslope	Soil Fertility	Moderately High	MGA 55
Landform Element	Mid Slope	BSAL Site Status	Verified BSAL	X: 686263
Surface Condition	Soft	Mapped as BSAL	Yes	Y: 6286660



Plate 1 – Soil Profile (C50)



Plate 2 – Surface (C50)



Plate 3 – Landscape (C50)

Horizon	Depth (m)	Description				
A11	0.00 – 0.15	Very Dark Greyish-Brown (Munsell 2.5Y 3/2) Clay Loam, with strong pedality. Slightly acidic pH, non-saline. Non-sodic. No coarse fragments. Many fine roots and moderately drained. Clear boundary.				
A12	0.15 – 0.30	Very Dark Greyish-Brown (Munsell 10YR 3/2) Clay Loam, with strong pedality. Neutral pH, non-saline. Non-sodic. No coarse fragments. Few roots and moderately drained. Gradual boundary.				
B2	0.30+	Dark Yellowish-Brown to Yellowish-Brown (Munsell 10YR 4/6 to 10YR 5/4) Heavy Clay with strong pedality. Mildly alkaline trending to moderately alkaline pH, non-saline. Non-sodic. No coarse fragments. Very few roots and moderately drained.				
Sample Depth	ECe		pH _(1-5water)		ESP	
	dS/m	Rating	Value	Rating	Value	Rating
0-0.10	0.5	Non-saline	6.2	Slightly Acidic	0.4	Non-sodic
0.20-0.30	0.4	Non-saline	7.1	Neutral	0.9	Non-sodic
0.40-0.50	0.4	Non-saline	7.8	Mildly Alkaline	1.5	Non-sodic
0.65-0.75	0.3	Non-saline	8.4	Moderately Alkaline	3.1	Non-sodic



Site Description – Site C51

Site Reference	C51	ASC Name	Manganic Mottled-Subnatric Grey Sodosol (BFKOWNR)	
Average Slope	2%	Land Use	Grazing	Coordinates
Landform Pattern	Hillslope	Soil Fertility	Moderately High	MGA 55
Landform Element	Lower Slope	BSAL Site Status	Verified Non-BSAL	X: 686567
Surface Condition	Soft	Mapped as BSAL	No	Y: 6286828



Plate 1 – Soil Profile (C51)



Plate 2 – Surface (C51)



Plate 3 – Landscape (C51)

Horizon	Depth (m)	Description
A1	0.00 – 0.15	Dark Grey (Munsell 5Y 4/1) Silty Loam, with moderate pedality. Strongly acidic pH, non-saline. Non-sodic. No coarse fragments. Many fine roots and moderately drained. Clear boundary.
A2	0.15 – 0.45	Gray (Munsell 5Y 6/1) Silty Loam, apedal structure. Slightly acidic pH, non-saline. Non-sodic. No coarse fragments. Few fine roots and poorly drained. Clear boundary.
B2	0.45 – 1.00	Light Greyish-Brown (Munsell 2.5Y 6/2) Heavy Clay, with moderate pedality. Neutral trending to moderately alkaline pH, non-saline. Sodic. No coarse fragments. No roots and poorly drained.

Sample Depth	ECe		pH _(1-5water)		ESP	
	dS/m	Rating	Value	Rating	Value	Rating
0-0.10	1.2	Non-saline	5.4	Strongly Acidic	2.4	Non-sodic
0.20-0.30	0.1	Non-saline	6.4	Slightly Acidic	2.4	Non-sodic
0.40-0.50	0.3	Non-saline	7.7	Mildly Alkaline	8.4	Sodic
0.65-0.75	0.3	Non-saline	8.3	Moderately Alkaline	10.7	Sodic



Site Description – Site C52

Site Reference	C52	ASC Name	Vertic Eutrophic Yellow Chromosol (BFMOWNR)	
Average Slope	3%	Land Use	Grazing	Coordinates
Landform Pattern	Hillslope	Soil Fertility	Moderately High	MGA 55
Landform Element	Upper Slope	BSAL Site Status	Verified BSAL	X: 686249
Surface Condition	Soft	Mapped as BSAL	Yes	Y: 6287270



Plate 1 – Soil Profile (C52)



Plate 2 – Surface (C52)



Plate 3 – Landscape (C52)

Horizon	Depth (m)	Description
A1	0.00 – 0.20	Very Dark Brown (Munsell 7.5YR 2.5/3) Silty Clay Loam, with strong pedality. Moderately acidic pH, non-saline. Non-sodic. No coarse fragments. Many fine roots and moderately drained. Clear boundary.
B2	0.20 – 0.90	Olive-Yellow to Yellowish-Brown (Munsell 2.5Y 6/6 to 10YR 5/4) Heavy Clay, with strong pedality. Slightly acidic trending to moderately alkaline pH, non-saline. Non-sodic. No coarse fragments. No roots and moderately drained.

Sample Depth	ECe		pH _(1.5water)		ESP	
	dS/m	Rating	Value	Rating	Value	Rating
0-0.10	0.7	Non-saline	5.5	Moderately Acidic	0.8	Non-sodic
0.20-0.30	0.5	Non-saline	6.5	Slightly Acidic	0.8	Non-sodic
0.40-0.50	0.4	Non-saline	7.2	Neutral	1.4	Non-sodic
0.65-0.75	0.3	Non-saline	8.0	Moderately Alkaline	2.0	Non-sodic



Site Description – Site C53

Site Reference	C53	ASC Name	Vertic Mesotrophic Brown Chromosol (BFLOWNR)	
Average Slope	2%	Land Use	Grazing	Coordinates
Landform Pattern	Hillslope	Soil Fertility	Moderately High	MGA 55
Landform Element	Lower Slope	BSAL Site Status	Verified Non-BSAL	X: 687113
Surface Condition	Soft	Mapped as BSAL	No	Y: 6287278



Plate 1 – Soil Profile (C53)



Plate 2 – Surface (C53)



Plate 3 – Landscape (C53)

Horizon	Depth (m)	Description				
A1	0.00 – 0.10	Olive Brown (Munsell 2.5Y 4/3) Loamy Sand, with moderate pedality. Moderately acidic pH, slightly saline. Non-sodic. No coarse fragments. Many fine roots and moderately drained. Gradual boundary.				
A2	0.10 – 0.30	Dark Brown (Munsell 10YR 3/3) Silty Loam, with weak pedality. Neutral pH, non-saline. Non-sodic. 40% coarse fragments 10mm. Few fine roots and poorly drained. Clear boundary.				
B2	0.30+	Light Olive Brown (Munsell 2.5Y 5/6 to 2.5Y 5/4) Heavy Clay, with strong pedality. Neutral trending to mildly alkaline pH, non-saline. Non-sodic. No coarse fragments. No roots and poorly drained.				
Sample Depth	ECe		pH _(1-5water)		ESP	
	dS/m	Rating	Value	Rating	Value	Rating
0-0.10	3.0	Slightly saline	5.5	Moderately Acidic	1.6	Non-sodic
0.20-0.30	0.3	Non-saline	6.8	Neutral	2.0	Non-sodic
0.40-0.50	0.2	Non-saline	6.8	Neutral	2.1	Non-sodic
0.65-0.75	0.2	Non-saline	7.4	Mildly Alkaline	1.9	Non-sodic



Site Description – Site C54

Site Reference	C54	ASC Name	Vertic Eutrophic Red Chromosol (BELOWNR)	
Average Slope	3%	Land Use	Grazing	Coordinates
Landform Pattern	Hillslope	Soil Fertility	Moderately High	MGA 55
Landform Element	Mid/Upper Slope	BSAL Site Status	Verified BSAL	X: 686683
Surface Condition	Soft	Mapped as BSAL	Yes	Y: 6287275



Plate 1 – Soil Profile (C54)



Plate 2 – Surface (C54)



Plate 3 – Landscape (C54)

Horizon	Depth (m)	Description
A1	0.00 – 0.15	Very Dark Grey (Munsell 7.5YR 3/1) Loam, with moderate pedality. Strongly acidic pH, non-saline. Non-sodic. No coarse fragments. Many fine roots and moderately drained. Clear boundary.
B2	0.15 – 1.00	Reddish-Brown to Yellowish-Red (Munsell 2.5YR 4/4 to 5YR 5/6) Light Clay to Heavy Clay, with strong pedality. Slightly acidic trending to neutral pH, non-saline. Non-sodic. No coarse fragments. Few fine roots and moderately drained.

Sample Depth	ECe		pH _(1-5water)		ESP	
	dS/m	Rating	Value	Rating	Value	Rating
0-0.10	0.8	Non-saline	5.2	Strongly Acidic	2.3	Non-sodic
0.20-0.30	0.2	Non-saline	6.2	Slightly Acidic	1.0	Non-sodic
0.40-0.50	0.4	Non-saline	6.8	Neutral	2.5	Non-sodic
0.65-0.75	0.3	Non-saline	7.3	Neutral	4.0	Non-sodic



Site Description – Site C55

Site Reference	C55	ASC Name	Manganic Eutrophic Red Dermosol (BGOOW)	
Average Slope	4%	Land Use	Grazing	Coordinates
Landform Pattern	Hillslope	Soil Fertility	Moderately High	MGA 55
Landform Element	Upper Slope	BSAL Site Status	Verified Non-BSAL	X: 686666
Surface Condition	Soft	Mapped as BSAL	No	Y: 6287735



Plate 1 – Soil Profile (C55)



Plate 2 – Surface (C55)



Plate 3 – Landscape (C55)

Horizon	Depth (m)	Description
A1	0.00 – 0.10	Brown (Munsell 7.5YR 4/3) Silty Clay Loam, with moderate pedality. Very strongly acidic pH, non-saline. Non-sodic. No coarse fragments. Many fine roots and moderately drained. Gradual boundary.
A2	0.10 – 0.30	Yellowish-Red (Munsell 5YR 5/6) Loam, with moderate pedality. Moderately acidic pH, non-saline. Non-sodic. No coarse fragments. Many fine roots and moderately drained. Gradual boundary.
B21	0.30 – 0.60	Reddish-Brown (Munsell 5YR 4/4) Clay Loam, with moderate pedality. Neutral pH, non-saline. Non-sodic. No coarse fragments. Few roots and moderately drained. Gradual boundary.
B22	0.60+	Olive Yellow (Munsell 2.5Y 6/6) Heavy Clay with moderate pedality. Moderately alkaline pH, non-saline. Non-sodic. No coarse fragments. No roots and moderately drained.

Sample Depth	ECe		pH _(1.5water)		ESP	
	dS/m	Rating	Value	Rating	Value	Rating
0-0.10	1.0	Non-saline	5.0	Very Strongly Acidic	1.4	Non-sodic
0.20-0.30	0.4	Non-saline	5.9	Moderately Acidic	1.2	Non-sodic
0.40-0.50	0.2	Non-saline	7.1	Neutral	1.4	Non-sodic
0.65-0.75	0.2	Non-saline	7.8	Moderately Alkaline	2.2	Non-sodic



Site Description – Site C56				
Site Reference	C56	ASC Name	Epipedal Brown Vertosol	
Average Slope	4%	Land Use	Grazing	Coordinates
Landform Pattern	Hillslope	Soil Fertility	Moderately High	MGA 55
Landform Element	Upper Slope	BSAL Site Status	Verified Non-BSAL	X: 686227
Surface Condition	Soft	Mapped as BSAL	No	Y: 6287701



Plate 1 – Soil Profile (C56)



Plate 2 – Surface (C56)



Plate 3 – Landscape (C56)

Description

No laboratory sample analysis due to soil depth and surface rock limitations associated with this soil unit.



Site Description – Site C57				
Site Reference	C57	ASC Name	Epipedal Brown Vertosol	
Average Slope	7%	Land Use	Grazing	Coordinates
Landform Pattern	Hillcrest	Soil Fertility	Moderately High	MGA 55
Landform Element	Crest	BSAL Site Status	Verified Non-BSAL	X: 685807
Surface Condition	Soft	Mapped as BSAL	No	Y: 6286809



Plate 1 – Soil Profile (C57)



Plate 2 – Surface (C57)



Plate 3 – Landscape (C57)

Description

Shallow soil (0.0 – 0.5m). No laboratory sample analysis due to soil depth limitations associated with this unit.



Site Description – Site C58				
Site Reference	C58	ASC Name	Epipedal Brown Vertosol	
Average Slope	6%	Land Use	Grazing	Coordinates
Landform Pattern	Hillslope	Soil Fertility	Moderately High	MGA 55
Landform Element	Upper Slope	BSAL Site Status	Verified Non-BSAL	X: 685789
Surface Condition	Soft	Mapped as BSAL	No	Y: 6287272



Plate 1 – Soil Profile (C58)



Plate 2 – Surface (C58)



Plate 3 – Landscape (C58)

Description

Shallow soil (0.0 – 0.4m). No laboratory sample analysis due to soil depth and surface rock outcrop limitations associated with this unit.



Site Description – Site C59

Site Reference	C59	ASC Name	Vertic Eutrophic Red Chromosol (BFLOWNR)	
Average Slope	8%	Land Use	Grazing	Coordinates
Landform Pattern	Hillslope	Soil Fertility	Moderately High	MGA 55
Landform Element	Lower Slope	BSAL Site Status	Verified BSAL	X: 685374
Surface Condition	Soft	Mapped as BSAL	Yes	Y: 6287269



Plate 1 – Soil Profile (C59)



Plate 2 – Surface (C59)



Plate 3 – Landscape (C59)

Horizon	Depth (m)	Description
A1	0.00 – 0.15	Dark Brown (Munsell 7.5YR 3/3) Loam, with strong pedality. Moderately acidic pH, non-saline. Non-sodic. 10% coarse fragments. Many fine roots and moderately drained. Clear boundary.
B21	0.15 – 0.60	Dark Reddish Brown to Dark Yellowish Brown (Munsell 2.5YR 3/4 to 10YR 4/6) Heavy Clay to Medium Clay, with strong pedality. Neutral pH, non-saline. Non-sodic. 10% coarse fragments. Few fine roots and moderately drained. Gradual boundary.
B22	0.60+	Yellowish-Brown (Munsell 10YR 5/6) Loam, with moderate pedality. Mildly alkaline pH, non-saline. Non-sodic. 10% coarse fragments. No roots and moderately drained.

Sample Depth	ECe		pH _(1-5water)		ESP	
	dS/m	Rating	Value	Rating	Value	Rating
0-0.10	0.6	Non-saline	6.0	Moderately Acidic	0.6	Non-sodic
0.20-0.30	0.3	Non-saline	6.7	Neutral	0.8	Non-sodic
0.40-0.50	0.2	Non-saline	7.2	Neutral	1.1	Non-sodic
0.65-0.75	0.3	Non-saline	7.4	Mildly Alkaline	1.6	Non-sodic



Site Description – Site C60

Site Reference	C60	ASC Name	Haplic Eutrophic Brown Chromosol (BFLOWNR)	
Average Slope	3%	Land Use	Grazing	Coordinates
Landform Pattern	Drainage Line	Soil Fertility	Moderately High	MGA 55
Landform Element	Lower Slope	BSAL Site Status	Verified BSAL	X: 685356
Surface Condition	Soft	Mapped as BSAL	Yes	Y: 6286813



Plate 1 – Soil Profile (C60)



Plate 2 – Surface (C60)



Plate 3 – Landscape (C60)

Horizon	Depth (m)	Description
A1	0.00 – 0.20	Very Dark Brown (Munsell 7.5YR 2.5/3) Silty Loam, with moderate pedality. Moderately acidic pH, non-saline. Non-sodic. No coarse fragments. Many fine roots and moderately drained. Gradual boundary.
A2	0.20 – 0.40	Dark Reddish-Brown (Munsell 5YR 2.5/2) Clay Loam, with strong pedality. Neutral pH, non-saline. Non-sodic. No coarse fragments. Common roots and moderately drained. Clear boundary.
B2	0.40 – 1.00	Very Dark Reddish-Brown to Olive Brown (Munsell 10 YR 3/2 to 2.5Y 4/3) Heavy Clay with strong pedality. Mildly alkaline trending to moderately alkaline pH, non-saline. Non-sodic. No coarse fragments. Common roots and moderately drained.

Sample Depth	ECe		pH _(1-5water)		ESP	
	dS/m	Rating	Value	Rating	Value	Rating
0-0.10	0.5	Non-saline	5.9	Moderately Acidic	0.5	Non-sodic
0.20-0.30	0.2	Non-saline	6.9	Neutral	0.7	Non-sodic
0.40-0.50	0.2	Non-saline	7.7	Mildly Alkaline	1.6	Non-sodic
0.65-0.75	0.3	Non-saline	8.2	Moderately Alkaline	2.8	Non-sodic



Site Description – Site C61

Site Reference	C61	ASC Name	Vertic Eutrophic Red Chromosol (BFMOWNR)	
Average Slope	5%	Land Use	Grazing	Coordinates
Landform Pattern	Hillslope	Soil Fertility	Moderately High	MGA 55
Landform Element	Mid Slope	BSAL Site Status	Verified BSAL	X: 684879
Surface Condition	Hard Set	Mapped as BSAL	Yes	Y: 6286793



Plate 1 – Soil Profile (C61)



Plate 2 – Surface (C61)



Plate 3 – Landscape (C61)

Horizon	Depth (m)	Description
A1	0.00 – 0.15	Dark Brown (Munsell 7.5YR 3/2) Silty Loam, with moderate pedality. Moderately acidic pH, non-saline. Non-sodic. No coarse fragments. Many fine roots and well drained. Clear boundary.
B21	0.15 – 0.40	Reddish-Brown (Munsell 2.5YR 4/3) Heavy Clay, with strong pedality. Neutral pH, non-saline. Non-sodic. No coarse fragments. Few fine roots and moderately drained. Gradual boundary.
B22	0.40+	Pale Olive to Olive (Munsell 5Y 6/4 to 5Y 4/4) Heavy Clay to Medium Clay, with strong pedality. Neutral trending to moderately alkaline pH, non-saline. Non-sodic. No coarse fragments. No roots and moderately drained.

Sample Depth	ECe		pH _(1-5water)		ESP	
	dS/m	Rating	Value	Rating	Value	Rating
0-0.10	1.0	Non-saline	5.7	Moderately Acidic	0.6	Non-sodic
0.20-0.30	0.1	Non-saline	6.8	Neutral	0.7	Non-sodic
0.40-0.50	0.1	Non-saline	7.3	Neutral	0.8	Non-sodic
0.65-0.75	0.2	Non-saline	7.7	Mildly Alkaline	1.2	Non-sodic



Site Description – Site C62

Site Reference	C62	ASC Name	Vertic Eutrophic Black Chromosol (BFMOWNR)	
Average Slope	6%	Land Use	Grazing	Coordinates
Landform Pattern	Hillslope	Soil Fertility	High	MGA 55
Landform Element	Lower Slope	BSAL Site Status	Verified BSAL	X: 685377
Surface Condition	Soft	Mapped as BSAL	Yes	Y: 6287712



Plate 1 – Soil Profile (C62)



Plate 2 – Surface (C62)



Plate 3 – Landscape (C62)

Horizon	Depth (m)	Description
A1	0.00 – 0.15	Dark Reddish-Brown (Munsell 5YR 3/2) Silty Loam, with moderate pedality. Moderately acidic pH, non-saline. Non-sodic. No coarse fragments. Many fine roots and well drained. Clear boundary.
B21	0.15 – 0.40	Dark Brown (Munsell 7.5YR 3/2) Heavy Clay, with strong pedality. Neutral pH, non-saline. Non-sodic. No coarse fragments. Common fine roots and moderately drained. Gradual boundary.
B22	0.40+	Very dark Greyish Brown to Olive (Munsell 10YR 3/2 to 5Y 4/4) Heavy Clay, with strong pedality. Mildly alkaline trending to moderately alkaline pH, non-saline. Non-sodic. No coarse fragments. No roots and moderately drained.

Sample Depth	ECe		pH _(1-5water)		ESP	
	dS/m	Rating	Value	Rating	Value	Rating
0-0.10	0.5	Non-saline	5.6	Moderately Acidic	0.4	Non-sodic
0.20-0.30	0.3	Non-saline	6.8	Neutral	0.6	Non-sodic
0.40-0.50	0.3	Non-saline	7.7	Mildly Alkaline	1.4	Non-sodic
0.65-0.75	0.3	Non-saline	8.2	Moderately Alkaline	2.4	Non-sodic



Site Description – Site C63

Site Reference	C63	ASC Name	Vertic Eutrophic Red Chromosol (BEMOWNR)	
Average Slope	3%	Land Use	Grazing	Coordinates
Landform Pattern	Hillcrest	Soil Fertility	Moderately High	MGA 55
Landform Element	Crest	BSAL Site Status	Verified BSAL	X: 685047
Surface Condition	Soft	Mapped as BSAL	Yes	Y: 6288174



Plate 1 – Soil Profile (C63)



Plate 2 – Surface (C63)



Plate 3 – Landscape (C63)

Horizon	Depth (m)	Description				
A1	0.00 – 0.15	Very Dark Brown (Munsell 5YR 3/1) Silty Loam, with moderate pedality. Moderately acidic pH, non-saline. Non-sodic. No coarse fragments. Many fine roots and moderately drained. Clear boundary.				
B21	0.15 – 0.50	Dark Reddish-Brown to Reddish-Brown (Munsell 2.5YR 3/4 to 2.5Y 4/3) Heavy Clay, with strong pedality. Neutral pH trending to mildly alkaline, non-saline. Non-sodic. No coarse fragments. Common fine roots and moderately drained. Gradual boundary.				
B22	0.50+	Dark Reddish Grey (Munsell 5YR 4/2) Heavy Clay, with moderate pedality. Moderately alkaline pH, non-saline. Non-sodic. No coarse fragments. Few fine roots and moderately drained.				
Sample Depth	ECe		pH _(1-5water)		ESP	
	dS/m	Rating	Value	Rating	Value	Rating
0-0.10	0.9	Non-saline	5.6	Moderately Acidic	0.4	Non-sodic
0.20-0.30	0.2	Non-saline	6.9	Neutral	0.8	Non-sodic
0.40-0.50	0.2	Non-saline	7.3	Mildly Alkaline	1.3	Non-sodic
0.65-0.75	0.2	Non-saline	7.6	Mildly Alkaline	1.8	Non-sodic



Site Description – Site C64

Site Reference	C64	ASC Name	Vertic Eutrophic Red Chromosol (BFMOWNR)	
Average Slope	6%	Land Use	Grazing	Coordinates
Landform Pattern	Hillslope	Soil Fertility	Moderately High	MGA 55
Landform Element	Upper Slope	BSAL Site Status	Verified BSAL	X: 685344
Surface Condition	Soft	Mapped as BSAL	Yes	Y: 6288189



Plate 1 – Soil Profile (C64)



Plate 2 – Surface (C64)



Plate 3 – Landscape (C64)

Horizon	Depth (m)	Description
A1	0.00 – 0.15	Dark Reddish-Grey (Munsell 2.5YR 3/1) Silty Loam, with moderate pedality. Neutral pH, non-saline. Non-sodic. No coarse fragments. Many fine roots and moderately drained. Clear boundary.
B21	0.15 – 0.50	Dark Reddish-Brown to Dark Brown (Munsell 2.5YR 3/3 to 7.5YR 3/2) Heavy Clay, with strong pedality. Neutral pH trending to mildly alkaline, non-saline. Non-sodic. No coarse fragments. Common fine roots and moderately drained. Gradual boundary.
B22	0.50+	Dark Yellowish-Brown (Munsell 10YR 4/6) Heavy Clay, with moderate pedality. Mildly alkaline pH, non-saline. Non-sodic. No coarse fragments. Few fine roots and moderately drained.

Sample Depth	ECe		pH _(1-5water)		ESP	
	dS/m	Rating	Value	Rating	Value	Rating
0-0.10	0.4	Non-saline	6.5	Neutral	0.4	Non-sodic
0.20-0.30	0.2	Non-saline	6.6	Neutral	0.6	Non-sodic
0.40-0.50	0.2	Non-saline	7.1	Neutral	0.6	Non-sodic
0.65-0.75	0.3	Non-saline	7.6	Mildly Alkaline	0.7	Non-sodic



Site Description – Site C65				
Site Reference	C65	ASC Name	Epipedal Brown Vertosol	
Average Slope	8%	Land Use	Grazing	Coordinates
Landform Pattern	Hillslope	Soil Fertility	Moderately High	MGA 55
Landform Element	Mid Slope	BSAL Site Status	Verified Non-BSAL	X: 685792
Surface Condition	Soft	Mapped as BSAL	No	Y: 6288190



Plate 1 – Soil Profile (C65)



Plate 2 – Surface (C65)



Plate 3 – Landscape (C65)

Description

No laboratory sample analysis due to surface rock limitations (>30%) associated with this soil unit.



Site Description – Site C66

Site Reference	C66	ASC Name	Vertic Eutrophic Black Chromosol (BFLOWNR)	
Average Slope	4%	Land Use	Grazing	Coordinates
Landform Pattern	Hillslope	Soil Fertility	High	MGA 55
Landform Element	Mid Slope	BSAL Site Status	Verified BSAL	X: 685769
Surface Condition	Soft	Mapped as BSAL	Yes	Y: 6287761



Plate 1 – Soil Profile (C66)



Plate 2 – Surface (C66)



Plate 3 – Landscape (C66)

Horizon	Depth (m)	Description
A1	0.00 – 0.10	Very Dark Grey (Munsell 10YR 3/1) Loam, with moderate pedality. Moderately acidic pH, non-saline. Non-sodic. No coarse fragments. Many fine roots and moderately drained. Clear boundary.
B2	0.10 – 0.80	Very Dark Greyish Brown to Dark Olive Grey (Munsell 10YR 2/2 to 5Y 3/2) Light Medium Clay to Heavy Clay, with strong pedality. Neutral trending to strongly alkaline pH, non-saline. Non-sodic. No coarse fragments. Few fine roots decreasing with depth and moderately drained.

Sample Depth	ECe		pH _(1-5water)		ESP	
	dS/m	Rating	Value	Rating	Value	Rating
0-0.10	0.8	Non-saline	5.9	Moderately Acidic	1.2	Non-sodic
0.20-0.30	0.7	Non-saline	6.7	Neutral	1.0	Non-sodic
0.40-0.50	0.3	Non-saline	7.8	Moderately Alkaline	1.9	Non-sodic
0.65-0.75	0.4	Non-saline	8.4	Strongly Alkaline	3.7	Non-sodic



Site Description – Site C67

Site Reference	C67	ASC Name	Manganic Eutrophic Red Dermosol (BELOW)	
Average Slope	0%	Land Use	Grazing	Coordinates
Landform Pattern	Drainage Plain	Soil Fertility	Moderately High	MGA 55
Landform Element	Drainage Line	BSAL Site Status	Verified BSAL	X: 686191
Surface Condition	Soft	Mapped as BSAL	Yes	Y: 6288164



Plate 1 – Soil Profile (C67)



Plate 2 – Surface (C67)



Plate 3 – Landscape (C67)

Horizon	Depth (m)	Description				
A1	0.00 – 0.10	Very Dusky Brown (Munsell 2.5YR 2.5/2) Silty Loam, with moderate pedality. Strongly acid pH, non-saline. Non-sodic. No coarse fragments. Many fine roots and moderately drained. Gradual boundary.				
B21	0.10 – 0.40	Dark Reddish-Brown (Munsell 2.5YR 3/3) Silty Loam, with moderate pedality. Strongly acidic pH, non-saline. Non-sodic. No coarse fragments. Few fine roots and moderately drained. Gradual boundary.				
B22	0.40 – 0.65	Dark Reddish-Brown (Munsell 5YR 3/4) Loam, with moderate pedality. Neutral pH, non-saline. Non-sodic. No coarse fragments. Few fine roots and poorly drained. Gradual boundary.				
B23	0.65+	Very Dark Greyish-Brown (Munsell 10YR 3/2) Clay Loam, with moderate pedality. Neutral pH, non-saline. Sodic. No coarse fragments. No roots and poorly drained.				
Sample Depth	ECe		pH _(1-5water)		ESP	
	dS/m	Rating	Value	Rating	Value	Rating
0-0.10	0.6	Non-saline	5.4	Strongly Acidic	0.8	Non-sodic
0.20-0.30	0.2	Non-saline	6.3	Slightly Acidic	1.1	Non-sodic
0.40-0.50	0.1	Non-saline	6.8	Neutral	2.0	Non-sodic
0.65-0.75	0.2	Non-saline	7.2	Neutral	6.9	Sodic



Site Description – Site C68

Site Reference	C68	ASC Name	Vertic Eutrophic Brown Chromosol (BFLOWNR)	
Average Slope	2%	Land Use	Grazing	Coordinates
Landform Pattern	Drainage Plain	Soil Fertility	Moderately High	MGA 55
Landform Element	Drainage Line	BSAL Site Status	Verified BSAL	X: 686650
Surface Condition	Soft	Mapped as BSAL	Yes	Y: 6288089



Plate 1 – Soil Profile (C68)



Plate 2 – Surface (C68)



Plate 3 – Landscape (C68)

Horizon	Depth (m)	Description
A1	0.00 – 0.20	Very Dark Grey (Munsell 10YR 3/1) Silty Loam, with moderate pedality. Moderately acidic pH, non-saline. Non-sodic. No coarse fragments. Many fine roots and moderately drained. Clear boundary.
B21	0.20 – 0.50	Very Dark Greyish-Brown to Very Dark Grey (Munsell 2.5Y 3/2 to 2.5Y 3/1) Light Clay to Heavy Clay, with strong pedality. Neutral pH, non-saline. Non-sodic. No coarse fragments. Few fine roots and moderately drained. Gradual boundary.
B22	0.50+	Olive (Munsell 5Y 4/3) Heavy Clay with strong pedality. Moderately alkaline pH, non-saline. Non-sodic. No coarse fragments. No roots and moderately drained.

Sample Depth	ECe		pH _(1-5water)		ESP	
	dS/m	Rating	Value	Rating	Value	Rating
0-0.10	0.4	Non-saline	5.5	Moderately Acidic	1.2	Non-sodic
0.20-0.30	0.3	Non-saline	6.7	Neutral	1.4	Non-sodic
0.40-0.50	0.2	Non-saline	7.2	Neutral	2.4	Non-sodic
0.65-0.75	0.4	Non-saline	8.4	Moderately Alkaline	5.2	Non-sodic



Site Description – Site C69

Site Reference	C69	ASC Name	Mottled Eutrophic Black Dermosol (BFLOW)	
Average Slope	4%	Land Use	Grazing	Coordinates
Landform Pattern	Hillslope	Soil Fertility	Moderately High	MGA 55
Landform Element	Mid Slope	BSAL Site Status	Verified BSAL	X: 686719
Surface Condition	Soft	Mapped as BSAL	Yes	Y: 6288607



Plate 1 – Soil Profile (C69)



Plate 2 – Surface (C69)



Plate 3 – Landscape (C69)

Horizon	Depth (m)	Description
A1	0.00 – 0.20	Dark Brown (Munsell 7.5YR 3/2) Loam, with moderate pedality. Moderately acidic pH, non-saline. Non-sodic. Minor coarse fragments. Many fine roots and moderately drained. Gradual boundary.
B21	0.20 – 0.40	Very Dark Greyish-Brown to Dark Reddish-Brown (Munsell 10YR 3/2) Loam, with strong pedality. Neutral pH, non-saline. Non-sodic. No coarse fragments. Many fine roots and moderately drained. Gradual boundary.
B22	0.40+	Dark Reddish-Brown to Olive Grey (Munsell 5YR 3/2 to 5Y 4/2) Heavy Clay, with strong pedality. Neutral to moderately alkaline pH, non-saline. Non-sodic. No coarse fragments. Very few roots and moderately drained.

Sample Depth	ECe		pH _(1-5water)		ESP	
	dS/m	Rating	Value	Rating	Value	Rating
0-0.10	0.6	Non-saline	5.8	Moderately Acidic	0.7	Non-sodic
0.20-0.30	0.5	Non-saline	6.6	Neutral	1.3	Non-sodic
0.40-0.50	0.3	Non-saline	7.1	Neutral	1.6	Non-sodic
0.65-0.75	0.3	Non-saline	7.6	Mildly Alkaline	2.7	Non-sodic



Site Description – Site C70

Site Reference	C70	ASC Name	Vertic Eutrophic Red Dermosol (BFLOW)	
Average Slope	2%	Land Use	Grazing	Coordinates
Landform Pattern	Hillcrest	Soil Fertility	Moderately High	MGA 55
Landform Element	Crest	BSAL Site Status	Verified BSAL	X: 687149
Surface Condition	Soft	Mapped as BSAL	Yes	Y: 6289080



Plate 1 – Soil Profile (C70)



Plate 2 – Surface (C70)



Plate 3 – Landscape (C70)

Horizon	Depth (m)	Description
A1	0.00 – 0.10	Dark Brown (Munsell 7.5YR 3/3) Loam, with strong pedality. Moderately acidic pH, non-saline. Non-sodic. No coarse fragments. Many fine roots and well drained. Gradual boundary.
B21	0.10 – 0.40	Dark Red (Munsell 2.5YR 3/6) Clay Loam, with strong pedality. Neutral pH, non-saline. Non-sodic. No coarse fragments. Few fine roots and well drained. Gradual boundary.
B22	0.40+	Red to Dark Reddish Brown (Munsell 2.5YR 4/8 to 2.5YR 3/4) Medium Clay to Heavy Clay with strong pedality. Mildly alkaline trending to moderately alkaline pH, non-saline. Non-sodic. No coarse fragments. Very few roots and well drained.

Sample Depth	ECe		pH _(1-5water)		ESP	
	dS/m	Rating	Value	Rating	Value	Rating
0-0.10	1.0	Non-saline	5.8	Moderately Acidic	1.1	Non-sodic
0.20-0.30	0.4	Non-saline	6.7	Neutral	1.8	Non-sodic
0.40-0.50	0.3	Non-saline	7.6	Mildly Alkaline	2.7	Non-sodic
0.65-0.75	0.3	Non-saline	8.0	Moderately Alkaline	4.9	Non-sodic



Site Description – Site C71

Site Reference	C71	ASC Name	Vertic Eutrophic Red Dermosol (BFMOW)	
Average Slope	4%	Land Use	Grazing	Coordinates
Landform Pattern	Hillslope	Soil Fertility	Moderately High	MGA 55
Landform Element	Lower Slope	BSAL Site Status	Verified BSAL	X: 687151
Surface Condition	Soft	Mapped as BSAL	Yes	Y: 6288663



Plate 1 – Soil Profile (C71)



Plate 2 – Surface (C71)



Plate 3 – Landscape (C71)

Horizon	Depth (m)	Description				
A1	0.00 – 0.20	Very Dark Brown (Munsell 10YR 2/2) Silty Clay Loam, with moderate pedality. Moderately acidic pH, non-saline. Non-sodic. No coarse fragments. Many fine roots and well drained. Gradual boundary.				
B21	0.20 – 0.40	Dark Reddish-Brown (Munsell 5YR 2.5/2) Loam, with strong pedality. Neutral pH, non-saline. Non-sodic. No coarse fragments. Few fine roots and moderately drained. Gradual boundary.				
B22	0.40+	Dark Reddish-Brown to Olive Brown (Munsell 2.5YR 3/4 to 2.5Y 4/4) Heavy Clay with strong pedality. Neutral pH, non-saline. Non-sodic. No coarse fragments. No roots and moderately drained.				
Sample Depth	ECe		pH _(1-5water)		ESP	
	dS/m	Rating	Value	Rating	Value	Rating
0-0.10	0.6	Non-saline	5.9	Moderately Acidic	0.4	Non-sodic
0.20-0.30	0.3	Non-saline	6.8	Neutral	0.6	Non-sodic
0.40-0.50	0.3	Non-saline	6.9	Neutral	0.9	Non-sodic
0.65-0.75	0.2	Non-saline	7.2	Neutral	1.3	Non-sodic



Site Description – Site C72

Site Reference	C72	ASC Name	Vertic Eutrophic Red Dermosol (BFKMW)	
Average Slope	9 - 12%	Land Use	Grazing	Coordinates
Landform Pattern	Hillslope	Soil Fertility	Moderately High	MGA 55
Landform Element	Mid Slope	BSAL Site Status	Verified Non-BSAL	X: 687589
Surface Condition	Soft	Mapped as BSAL	No	Y: 6288667

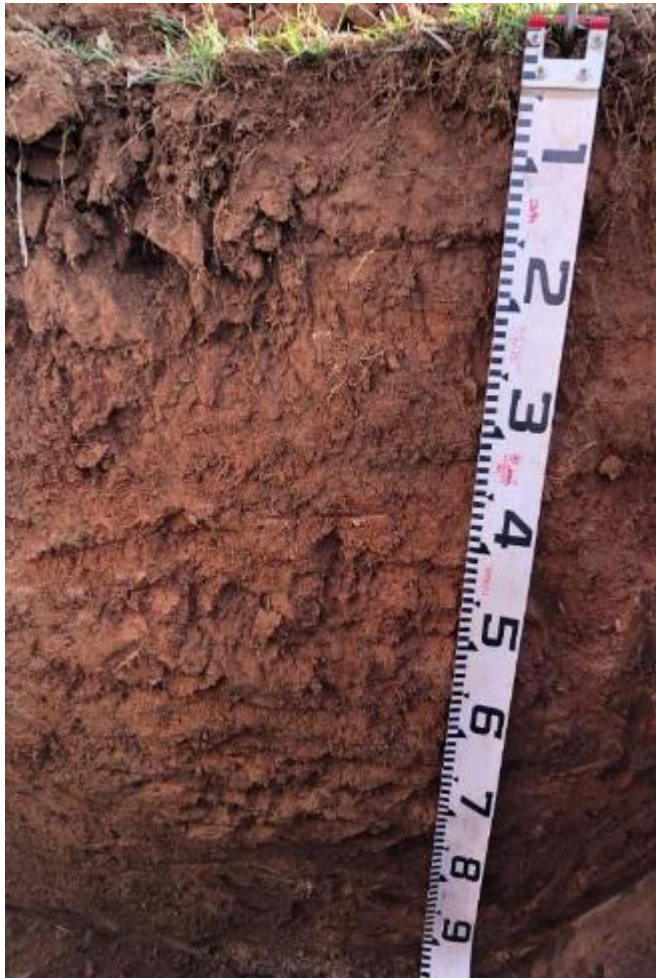


Plate 1 – Soil Profile (C72)



Plate 2 – Surface (C72)



Plate 3 – Landscape (C72)

Horizon	Depth (m)	Description
A1	0.00 – 0.40	Dusky Brown to Dusky Red (Munsell 7.5YR 3/3 to 10R 3/4) Loamy Sand to Loam, with moderate pedality. Very strongly acidic trending to slightly acidic pH, non-saline. Non-sodic. No coarse fragments. Many fine roots and well drained. Gradual boundary.
B2	0.40 – 1.00	Red (Munsell 2.5YR 4/8) Clay Loam with moderate pedality. Neutral pH, non-saline. Non-sodic. No coarse fragments. Common roots and well drained.

Sample Depth	ECe		pH _(1-5water)		ESP	
	dS/m	Rating	Value	Rating	Value	Rating
0-0.10	1.3	Non-saline	5.0	Very Strongly Acidic	1.4	Non-sodic
0.20-0.30	0.1	Non-saline	6.3	Slightly Acidic	1.4	Non-sodic
0.40-0.50	0.1	Non-saline	6.8	Neutral	0.7	Non-sodic
0.65-0.75	0.1	Non-saline	7.0	Neutral	0.8	Non-sodic



Site Description – Site C73

Site Reference	C73	ASC Name	Vertic Eutrophic Brown Chromosol (BFMOWNR)	
Average Slope	7%	Land Use	Grazing	Coordinates
Landform Pattern	Hillslope	Soil Fertility	Moderately High	MGA 55
Landform Element	Mid Slope	BSAL Site Status	Verified BSAL	X: 687574
Surface Condition	Soft	Mapped as BSAL	Yes	Y: 6289049



Plate 1 – Soil Profile (C73)



Plate 2 – Surface (C73)



Plate 3 – Landscape (C73)

Horizon	Depth (m)	Description				
A1	0.00 – 0.15	Very Dark Brown (Munsell 7.5YR 2.5/2) Clay Loam, with moderate pedality. Moderately acidic trending to slightly acidic pH, non-saline. Non-sodic. No coarse fragments. Many fine roots and well drained. Clear boundary.				
B2	0.15 – 1.00	Dark Brown to Olive (Munsell 7.5YR 3/2 to 5Y 5/4) Heavy Clay trending to Clay Loam, with moderate pedality. Neutral trending to mildly alkaline pH, non-saline. Non-sodic. No coarse fragments. Common roots throughout and well drained.				
Sample Depth	ECe		pH _(1-5water)		ESP	
	dS/m	Rating	Value	Rating	Value	Rating
0-0.10	0.4	Non-saline	6.0	Moderately Acidic	0.6	Non-sodic
0.20-0.30	0.2	Non-saline	7.0	Neutral	0.7	Non-sodic
0.40-0.50	0.2	Non-saline	7.4	Mildly Alkaline	0.7	Non-sodic
0.65-0.75	0.3	Non-saline	7.8	Mildly Alkaline	1.1	Non-sodic



Site Description – Site D1

Site Reference	D1	ASC Name	Vertic Eutrophic Brown Chromosol (BFLOWNR)	
Average Slope	4%	Land Use	Grazing	Coordinates
Landform Pattern	Hillcrest	Soil Fertility	Moderately High	MGA 55
Landform Element	Crest	BSAL Site Status	Verified BSAL	X: 684178
Surface Condition	Soft	Mapped as BSAL	Yes	Y: 6285261



Plate 1 – Soil Profile (D1)



Plate 2 – Surface (D1)



Plate 3 – Landscape (D1)

Horizon	Depth (m)	Description
A11	0.00 – 0.10	Dark Reddish-Brown (Munsell 2.5YR 3/3) Loam, with strong pedality. Strongly acidic pH, non-saline. Non-sodic. No coarse fragments. Many roots and well drained. Gradual boundary.
A12	0.10 – 0.30	Dark Reddish-Brown (Munsell 2.5YR 3/4) Clay Loam, with strong pedality. Neutral pH, non-saline. Non-sodic. No coarse fragments. Common fine roots and moderately drained. Clear boundary.
B2	0.30+	Light Olive Brown to Olive (Munsell 2.5Y 5/6 to 5Y 4/3) Heavy Clay with strong pedality. Moderately alkaline to strongly alkaline pH, non-saline. Non-sodic. No coarse fragments. No roots and moderately drained.

Sample Depth	ECe		pH _(1.5water)		ESP	
	dS/m	Rating	Value	Rating	Value	Rating
0-0.10	0.8	Non-saline	5.4	Strongly Acidic	0.9	Non-sodic
0.20-0.30	0.4	Non-saline	6.7	Neutral	1.0	Non-sodic
0.40-0.50	0.4	Non-saline	8.0	Moderately Alkaline	2.6	Non-sodic
0.65-0.75	1.2	Non-saline	8.5	Strongly Alkaline	2.7	Non-sodic



Site Description – Site D2

Site Reference	D2	ASC Name	Brown Vertosol	
Average Slope	3%	Land Use	Grazing	Coordinates
Landform Pattern	Hillcrest	Soil Fertility	Moderately High	MGA 55
Landform Element	Crest	BSAL Site Status	Verified Non-BSAL	X: 684101
Surface Condition	Soft	Mapped as BSAL	No	Y: 6285860



Plate 1 – Soil Profile (D2)



Plate 2 – Surface (D2)



Plate 3 – Landscape (D2)

Horizon	Depth (m)	Description
A1	0.00 – 0.15	Brown Clay Loam (field assessment), with strong pedality. No coarse fragments. Many roots and moderately drained. Gradual boundary.
B2	0.15 – 0.60	Brown Clay (field assessment), with strong pedality. No coarse fragments. Common fine roots and moderately drained. Gradual boundary.
C	0.60+	Parent material.

No laboratory sample analysis due to soil depth limitations associated with this soil unit.



Site Description – Site D3

Site Reference	D3	ASC Name	Brown Vertosol	
Average Slope	4%	Land Use	Grazing	Coordinates
Landform Pattern	Hillslope	Soil Fertility	Moderately High	MGA 55
Landform Element	Upper Slope	BSAL Site Status	Verified Non-BSAL	X: 684545
Surface Condition	Soft	Mapped as BSAL	No	Y: 6286901



Plate 1 – Soil Profile (D3)



Plate 2 – Surface (D3)



Plate 3 – Landscape (D3)

Horizon	Depth (m)	Description
A1	0.00 – 0.15	Brown Clay (field assessment), with strong pedality. No coarse fragments. Many roots and moderately drained. Gradual boundary.
B2	0.15 – 0.50	Brown Clay (field assessment), with strong pedality. No coarse fragments. Common fine roots and moderately drained. Gradual boundary.
C	0.50+	Parent material.

No laboratory sample analysis due to soil depth limitations associated with this soil unit.



Site Description – Site D4				
Site Reference	D4	ASC Name	Brown Vertosol	
Average Slope	4%	Land Use	Grazing	Coordinates
Landform Pattern	Hillslope	Soil Fertility	Moderately High	MGA 55
Landform Element	Lower Slope	BSAL Site Status	Verified Non-BSAL	X: 683338
Surface Condition	Soft	Mapped as BSAL	No	Y: 6287388



Plate 1 – Soil Profile (D4)



Plate 2 – Surface (D4)



Plate 3 – Landscape (D4)

Description

No laboratory sample analysis due to soil depth limitations associated with this soil profile.



Site Description – Site D5

Site Reference	D5	ASC Name	Haplic Eutrophic Black Kandosol (BFLWNR)	
Average Slope	2%	Land Use	Grazing	Coordinates
Landform Pattern	Drainage slope	Soil Fertility	Moderate	MGA 55
Landform Element	Lower slope	BSAL Site Status	Verified BSAL	X: 683140
Surface Condition	Soft	Mapped as BSAL	Yes	Y: 6287144



Plate 1 – Soil Profile (D5)



Plate 2 – Surface (D5)



Plate 3 – Landscape (D5)

Horizon	Depth (m)	Description
A1	0.00 – 0.10	Very Dark Brown (Munsell 7.5YR 2.5/3) Loamy Sand, with moderate pedality. Slightly acidic pH, slightly saline. Non-sodic. No coarse fragments. Many fine roots and well drained. Gradual boundary.
B21	0.10 – 0.50	Dark Reddish-Brown (Munsell 5YR 3/2) Silty Loam, with weak pedality. Neutral pH, non-saline. Non-sodic. No coarse fragments. Common roots and well drained. Gradual boundary.
B22	0.50+	Red (Munsell 5YR 3/4 to 2.5YR 4/8) Loam, with weak pedality. Neutral pH, non-saline. Non-sodic. Minor gravel presence. Few roots and well drained.

Sample Depth	ECe		pH _(1-5water)		ESP	
	dS/m	Rating	Value	Rating	Value	Rating
0-0.10	2.9	Slightly saline	6.5	Slightly Acidic	0.6	Non-sodic
0.20-0.30	0.5	Non-saline	7.0	Neutral	1.7	Non-sodic
0.40-0.50	0.6	Non-saline	6.9	Neutral	1.8	Non-sodic
0.65-0.75	0.2	Non-saline	7.0	Neutral	3.0	Non-sodic



Site Description – Site D6

Site Reference	D6	ASC Name	Haplic Eutrophic Black Kandosol (BFLWNR)	
Average Slope	0%	Land Use	Grazing	Coordinates
Landform Pattern	Alluvial Bank	Soil Fertility	Moderate	MGA 55
Landform Element	Drainage Line	BSAL Site Status	Verified BSAL	X: 682707
Surface Condition	Soft	Mapped as BSAL	Yes	Y: 6286912



Plate 1 – Soil Profile (D6)



Plate 2 – Surface (D6)



Plate 3 – Landscape (D6)

Horizon	Depth (m)	Description
A1	0.00 – 0.10	Very Dark Brown (Munsell 7.5YR 2.5/3) Silty Loam, with strong pedality. Slightly acidic pH, non-saline. Non-sodic. No coarse fragments. Many fine roots and well drained. Gradual boundary.
B21	0.10 – 0.35	Very Dark Brown (Munsell 10YR 2/2) Silty Loam, with weak pedality. Neutral pH, non-saline. Non-sodic. No coarse fragments. Common roots and well drained. Gradual boundary.
B22	0.35+	Dark Reddish-Brown to Dark-Yellowish Brown (Munsell 5YR 3/4 to 10YR 3/6) Loam, with weak pedality. Neutral pH, non-saline. Non-sodic. No coarse fragments. Few roots and well drained.

Sample Depth	ECe		pH _(1.5water)		ESP	
	dS/m	Rating	Value	Rating	Value	Rating
0-0.10	0.5	Non-saline	6.1	Slightly Acidic	2.4	Non-sodic
0.20-0.30	0.2	Non-saline	6.9	Neutral	1.3	Non-sodic
0.40-0.50	0.2	Non-saline	7.2	Neutral	1.7	Non-sodic
0.65-0.75	0.2	Non-saline	7.2	Neutral	1.7	Non-sodic



Site Description – Site D10

Site Reference	D10	ASC Name	Haplic Eutrophic Red Dermosol (BELMW)	
Average Slope	0%	Land Use	Grazing	Coordinates
Landform Pattern	Alluvial Flat	Soil Fertility	Moderately High	MGA 55
Landform Element	Drainage Line	BSAL Site Status	Verified BSAL	X: 683962
Surface Condition	Soft	Mapped as BSAL	Yes	Y: 6290230



Plate 1 – Soil Profile (D10)



Plate 2 – Surface (C10)



Plate 3 – Landscape (D10)

Horizon	Depth (m)	Description
A1	0.00 – 0.15	Very Dark Brown (Munsell 10YR 2/2) Loam, with strong pedality. Moderately acidic pH, non-saline. Non-sodic. No coarse fragments. Many fine roots and moderately drained. Gradual boundary.
B21	0.15 – 0.60	Dark Reddish-Brown (Munsell 5YR 4/4) Loam, with strong pedality. Neutral pH, non-saline. Non-sodic. No coarse fragments. Common roots and moderately drained. Gradual boundary.
B22	0.60 – 0.80	Very Dark Brown (Munsell 10YR 2/2) Clay Loam, with strong pedality. Neutral pH, non-saline. Non-sodic. No coarse fragments. Common roots and moderately drained.

Sample Depth	ECe		pH _(1.5water)		ESP	
	dS/m	Rating	Value	Rating	Value	Rating
0-0.10	0.4	Non-saline	6.0	Moderately Acidic	1.2	Non-sodic
0.20-0.30	0.5	Non-saline	6.6	Neutral	1.3	Non-sodic
0.40-0.50	0.4	Non-saline	6.9	Neutral	1.0	Non-sodic
0.65-0.75	0.2	Non-saline	7.1	Neutral	1.0	Non-sodic



Site Description – Site D11

Site Reference	D11	ASC Name	Haplic Eutrophic Red Dermosol (BELOV)	
Average Slope	3%	Land Use	Pine Forest	Coordinates
Landform Pattern	Hillcrest	Soil Fertility	Moderately High	MGA 55
Landform Element	Crest	BSAL Site Status	Verified Non-BSAL	X: 688402
Surface Condition	Soft	Mapped as BSAL	No	Y: 6295439



Plate 1 – Soil Profile (D11)



Plate 2 – Surface (D11)



Plate 3 – Landscape (D11)

Horizon	Depth (m)	Description
A1	0.00 – 0.20	Very Dark Brown (Munsell 7.5YR 2.5/2) Loamy Sand, with moderate pedality. Very strongly acidic pH, non-saline. Non-sodic. No coarse fragments. Many fine roots and well drained. Gradual boundary.
A2	0.20 – 0.40	Reddish-Brown (Munsell 5YR 4/4) Loamy Sand, with moderate pedality. Strongly acidic pH, non-saline. Non-sodic. 10% coarse fragments 100mm. Common roots and well drained. Clear boundary.
BC	0.40+	Red (Munsell 10R 4/8) Loam, with moderate pedality. Moderately acidic pH, non-saline. Non-sodic. 50% coarse fragments 10 – 50mm. Few large roots and well drained.

Sample Depth	ECe		pH _(1-5water)		ESP	
	dS/m	Rating	Value	Rating	Value	Rating
0-0.10	0.8	Non-saline	4.8	Very Strongly Acidic	0.3	Non-sodic
0.20-0.30	0.4	Non-saline	5.2	Strongly Acidic	0.7	Non-sodic
0.40-0.50	0.2	Non-saline	5.7	Moderately Acidic	1.6	Non-sodic
0.65-0.75	0.1	Non-saline	5.7	Moderately Acidic	2.2	Non-sodic



Site Description – Site D13				
Site Reference	D13	ASC Name	Brown Vertosol	
Average Slope	7%	Land Use	Grazing	Coordinates
Landform Pattern	Hillcrest	Soil Fertility	-	MGA 55
Landform Element	Upper Slope	BSAL Site Status	Verified Non-BSAL	X: 684545
Surface Condition	Soft	Mapped as BSAL	No	Y: 6286901



Plate 1 – Soil Profile (D13)



Plate 2 – Surface (D13)



Plate 3 – Landscape (D13)

Horizon	Depth (m)	Description
A1	0.00 – 0.10	Brown Clay (field assessment), with strong pedality. No coarse fragments. Many roots and moderately drained. Gradual boundary.
B2	0.10 – 0.55	Brown Clay (field assessment), with strong pedality. 20% coarse fragments. Common fine roots and moderately drained. Gradual boundary.
C	0.55+	Parent material.

No laboratory sample analysis due to soil depth limitations associated with this soil unit.



Site Description – Site D14				
Site Reference	D14	ASC Name	Brown Dermosol	
Average Slope	7%	Land Use	Grazing	Coordinates
Landform Pattern	Hillslope	Soil Fertility	-	MGA 55
Landform Element	Upper Slope	BSAL Site Status	Verified Non-BSAL	X: 684545
Surface Condition	Soft	Mapped as BSAL	No	Y: 6286901



Plate 1 – Soil Profile (D14)



Plate 2 – Surface (D14)



Plate 3 – Landscape (D14)

Horizon	Depth (m)	Description
A1	0.00 – 0.10	Brown Clay Loam (field assessment), with strong pedality. 10% coarse fragments. Many roots and moderately drained. Gradual boundary.
B2	0.10 – 0.20	Brown Clay (field assessment), with strong pedality. 10% coarse fragments. Common fine roots and moderately drained. Gradual boundary.
C	0.20+	Parent material.

No laboratory sample analysis due to soil depth limitations associated with this soil unit.



Site Description – Site D18

Site Reference	D18	ASC Name	Vertic Eutrophic Black Chromosol (BEMOWNR)	
Average Slope	3%	Land Use	Grazing	Coordinates
Landform Pattern	Ridgeline	Soil Fertility	Moderately High	MGA 55
Landform Element	Crest	BSAL Site Status	Verified BSAL	X: 683198
Surface Condition	Soft	Mapped as BSAL	Yes	Y: 6289407



Plate 1 – Soil Profile (D18)



Plate 2 – Surface (D18)



Plate 3 – Landscape (D18)

Horizon	Depth (m)	Description
A1	0.00 – 0.30	Very Dark Brown (Munsell 10YR 2/2) Clay Loam, with strong pedality. Slightly acidic trending to neutral pH, non-saline. Non-sodic. No coarse fragments. Many fine roots and moderately drained. Gradual boundary.
B2	0.30 – 0.90	Very Dark Greyish-Brown to Dark Olive Grey (Munsell 10YR 3/2 to 5Y 3/2) Heavy Clay, with strong pedality. Moderately alkaline to strongly alkaline pH, non-saline. Non-sodic. No coarse fragments. Common roots and moderately drained.

Sample Depth	ECe		pH _(1.5water)		ESP	
	dS/m	Rating	Value	Rating	Value	Rating
0-0.10	0.5	Non-saline	6.1	Slightly Acidic	1.5	Non-sodic
0.20-0.30	0.2	Non-saline	7.2	Neutral	0.7	Non-sodic
0.40-0.50	0.4	Non-saline	8.4	Moderately Alkaline	1.2	Non-sodic
0.65-0.75	0.5	Non-saline	8.5	Strongly Alkaline	2.0	Non-sodic



Site Description – Site D19

Site Reference	D19	ASC Name	Haplic Eutrophic Red Chromosol (BEKOWNR)	
Average Slope	0%	Land Use	Pine Forest	Coordinates
Landform Pattern	Hillcrest	Soil Fertility	Moderately High	MGA 55
Landform Element	Crest	BSAL Site Status	Verified BSAL	X: 688087
Surface Condition	Soft	Mapped as BSAL	Yes	Y: 6296286

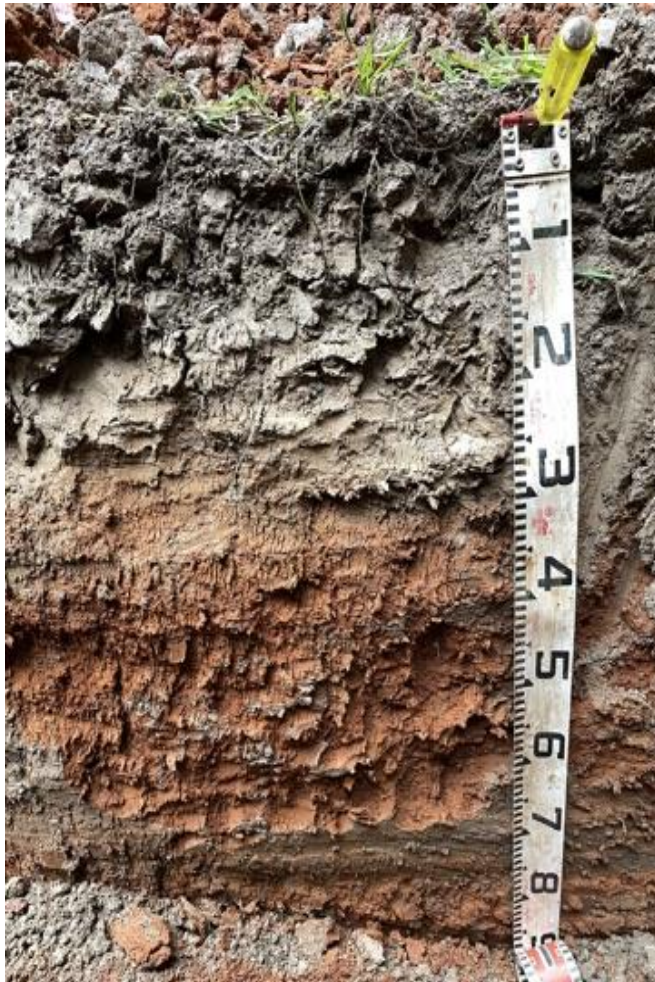


Plate 1 – Soil Profile (D19)



Plate 2 – Surface (D19)



Plate 3 – Landscape (D19)

Horizon	Depth (m)	Description				
A1	0.00 – 0.10	Dark Grey (Munsell 7.5YR 4/1) Silty Loam, with strong pedality. Moderately acidic pH, non-saline. Non-sodic. No coarse fragments. Many fine roots and well drained. Clear boundary.				
A2	0.10 – 0.30	Olive Brown (Munsell 2.5Y 4/4) Loamy Sand, with weak pedality. Slightly acidic pH, non-saline. Non-sodic. No coarse fragments. Many fine roots and well drained. Clear boundary.				
B2	0.30 – 0.90	Red to Dark Red (Munsell 10R 4/8 to 10R 3/6) Heavy Clay, with strong pedality. Moderately acidic pH, non-saline. Non-sodic. No coarse fragments. Few roots and moderately drained.				
Sample Depth	ECe		pH _(1-5water)		ESP	
	dS/m	Rating	Value	Rating	Value	Rating
0-0.10	0.3	Non-saline	6.0	Moderately Acidic	1.0	Non-sodic
0.20-0.30	0.4	Non-saline	6.0	Slightly Acidic	1.3	Non-sodic
0.40-0.50	0.1	Non-saline	5.8	Moderately Acidic	0.8	Non-sodic
0.65-0.75	0.1	Non-saline	5.9	Moderately Acidic	0.8	Non-sodic



Site Description – Site M1

Site Reference	M1	ASC Name	Haplic Eutrophic Brown Dermosol (BEMOW)	
Average Slope	5%	Land Use	Grazing	Coordinates
Landform Pattern	Hillslope	Soil Fertility	Moderately High	MGA 55
Landform Element	Mid Slope	BSAL Site Status	Verified BSAL	X: 685489
Surface Condition	Soft	Mapped as BSAL	Yes	Y: 6288313



Plate 1 – Soil Profile (M1)



Plate 2 – Surface (M1)



Plate 3 – Landscape (M1)

Horizon	Depth (m)	Description				
A1	0.00 – 0.15	Very dark brown (Munsell 7.5YR 2.5/2) Clay Loam, with moderate pedality. Slightly acidic pH, non-saline. Non-sodic. No coarse fragments. Many roots and well drained. Gradual boundary.				
A2	0.15 – 0.35	Dark brown (Munsell 7.5YR 3/3) Light Medium Clay, with moderate pedality. Neutral pH, non-saline. Non-sodic. No coarse fragments. Many roots and well drained. Gradual boundary.				
B21	0.35 – 0.60	Dark yellowish-brown (Munsell 10YR 4/4) Medium Clay, with strong pedality. Moderately alkaline pH, non-saline. Non-sodic. No coarse fragments. Few roots and moderately drained. Gradual boundary.				
B22	0.60+	Dark yellowish-brown (Munsell 10YR 4/4) Heavy Clay, with strong pedality. Moderately alkaline pH, non-saline. Non-sodic. No coarse fragments. No roots and moderately drained.				
Sample Depth	ECe		pH _(1.5water)		ESP	
	dS/m	Rating	Value	Rating	Value	Rating
0-0.10	0.5	Non-saline	6.2	Slightly Acidic	0.5	Non sodic
0.20-0.30	0.3	Non-saline	6.8	Neutral	1.1	Non sodic
0.40-0.50	0.4	Non-saline	8.0	Moderately Alkaline	2.4	Non sodic
0.65-0.75	0.6	Non-saline	8.3	Moderately Alkaline	3.5	Non sodic



Site Description – Site M2

Site Reference	M2	ASC Name	Brown Dermosol	
Average Slope	6%	Land Use	Grazing	Coordinates
Landform Pattern	Hillslope	Soil Fertility	Moderately High	MGA 55
Landform Element	Mid Slope	BSAL Site Status	Verified BSAL	X: 685697
Surface Condition	Soft	Mapped as BSAL	Yes	Y: 6288278



Plate 1 – Soil Profile (M2)



Plate 2 – Surface (M2)



Plate 3 – Landscape (M2)

Horizon	Depth (m)	Description
A1	0.00 – 0.15	Dark brown Clay Loam (field texture), with moderate pedality. No coarse fragments. Many roots and well drained. Gradual boundary.
A2	0.15 – 0.40	Light brown Silty Clay Loam (field texture), with moderate pedality. No coarse fragments. Common roots and well drained. Gradual boundary.
B2	0.40 – 0.75	Dark yellowish brown Medium Clay (field texture), with strong pedality. No coarse fragments. Very few roots and moderately drained.



Site Description – Site M3

Site Reference	M3	ASC Name	Eutrophic Mesonatric Brown Sodosol (BFLMWNR)	
Average Slope	8%	Land Use	Grazing	Coordinates
Landform Pattern	Hillslope	Soil Fertility	Moderately Low	MGA 55
Landform Element	Lower Slope	BSAL Site Status	Verified Non-BSAL	X: 686501
Surface Condition	Soft	Mapped as BSAL	No	Y: 6288634



Plate 1 – Soil Profile (M3)



Plate 2 – Surface (M3)



Plate 3 – Landscape (M3)

Horizon	Depth (m)	Description				
A1	0.00 – 0.20	Very dark greyish brown (Munsell 10YR 3/2) Silty Loam, with moderate pedality. Strongly acidic pH, moderately saline. Sodic. No coarse fragments. Many roots and moderately drained. Gradual boundary.				
A2	0.20 – 0.40	Dark reddish grey (Munsell 2.5YR 4/1) Silty Loam, with weak pedality. Strongly acidic pH, moderately saline. Sodic. No coarse fragments. Very few roots and imperfectly drained. Clear boundary.				
B2	0.40+	Dark yellowish brown to brown (Munsell 10YR 4/4 to 10YR 4/3) Clay Loam, with strong pedality. Mildly alkaline trending to strongly alkaline pH, slightly saline trending to non-saline. Sodic. No coarse fragments. 30% distinct grey mottles. No roots and imperfectly drained.				
Sample Depth	ECe		pH _(1-5water)		ESP	
	dS/m	Rating	Value	Rating	Value	Rating
0-0.10	6.6	Moderately saline	5.5	Strongly Acidic	13.5	Sodic
0.20-0.30	6.5	Moderately saline	6.5	Slightly Acidic	19.6	Sodic
0.40-0.50	3.1	Slightly saline	7.6	Mildly Alkaline	16.0	Sodic
0.65-0.75	1.6	Non-saline	8.7	Strongly Alkaline	17.4	Sodic



Site Description – Site M4

Site Reference	M4	ASC Name	Haplic Eutrophic Brown Chromosol (BFLOWNR)	
Average Slope	5%	Land Use	Grazing	Coordinates
Landform Pattern	Hillslope	Soil Fertility	Moderately High	MGA 55
Landform Element	Mid Slope	BSAL Site Status	Verified BSAL	X: 686420
Surface Condition	Soft	Mapped as BSAL	Yes	Y: 6288574



Plate 1 – Soil Profile (M4)



Plate 2 – Surface (M4)



Plate 3 – Landscape (M4)

Horizon	Depth (m)	Description				
A1	0.00 - 0.15	Very dark brown (Munsell 7.5YR 2.5/3) Loam, with strong pedality. Slightly acidic pH, non-saline. Non-sodic. No coarse fragments. Many roots and well drained. Clear boundary.				
B21	0.15 - 0.30	Very dark brown (Munsell 7.5YR 2.5/3) Light Medium Clay with moderate pedality. Neutral pH, non-saline. Non-sodic. No coarse fragments. Common roots and moderately drained. Clear boundary.				
B22	0.30+	Strong brown (Munsell 7.5YR 4/6) Light Medium Clay to Medium Clay, with strong pedality. Mildly alkaline pH, non-saline. Non-sodic. No coarse fragments. Very few roots and moderately drained.				
Sample Depth	ECe		pH _(1.5water)		ESP	
	dS/m	Rating	Value	Rating	Value	Rating
0-0.10	0.8	Non-saline	6.1	Slightly Acidic	1.3	Non sodic
0.20-0.30	0.4	Non-saline	6.6	Neutral	1.1	Non sodic
0.40-0.50	0.4	Non-saline	7.4	Mildly Alkaline	2.6	Non sodic
0.65-0.75	0.3	Non-saline	7.6	Mildly Alkaline	3.4	Non sodic



Site Description – Site M5

Site Reference	M5	ASC Name	Haplic Hypocalcic Brown Chromosol (BEKOWNR)	
Average Slope	4%	Land Use	Grazing	Coordinates
Landform Pattern	Hillslope	Soil Fertility	Moderately High	MGA 55
Landform Element	Lower Slope	BSAL Site Status	Verified Non-BSAL	X: 686442
Surface Condition	Soft	Mapped as BSAL	No	Y: 6288477



Plate 1 – Soil Profile (M5)



Plate 2 – Surface (M5)



Plate 3 – Landscape (M5)

Horizon	Depth (m)	Description
A1	0.00 – 0.15	Very dark brown (Munsell 10YR 2/2) Silty Loam, with moderate pedality. Moderately acidic pH, non-saline. Non-sodic. No coarse fragments. Many roots and well drained. Clear boundary.
A2	0.15 – 0.25	Very dark greyish brown (Munsell 10YR 3/2) Loam, with weak pedality. Slightly acidic pH, non-saline. Non-sodic. No coarse fragments. Few roots and moderately drained. Clear boundary.
B2	0.25+	Dark yellowish brown to brown (Munsell 10YR 4/4 to 10YR 4/3) Medium Clay to Sandy Clay Loam, with strong pedality. Mildly alkaline trending to moderately alkaline pH, slightly saline trending to moderately saline. Non-sodic. No coarse fragments. No roots and moderately drained.

Sample Depth	ECe		pH _(1-5water)		ESP	
	dS/m	Rating	Value	Rating	Value	Rating
0-0.10	1.2	Non-saline	5.8	Moderately Acidic	0.6	Non sodic
0.15-0.25	1.0	Non-saline	6.4	Slightly Acidic	1.6	Non sodic
0.40-0.50	3.2	Slightly saline	7.6	Mildly Alkaline	1.6	Non sodic
0.65-0.75	5.3	Moderately saline	7.8	Moderately Alkaline	2.8	Non sodic



Site Description – Site M6

Site Reference	M6	ASC Name	Brown Dermosol	
Average Slope	3%	Land Use	Road Verge	Coordinates
Landform Pattern	Hillcrest	Soil Fertility	Moderately High	MGA 55
Landform Element	Upper Slope/Crest	BSAL Site Status	Verified Non-BSAL	X: 686202
Surface Condition	Soft	Mapped as BSAL	No	Y: 6288362



Plate 1 – Soil Profile (M6)



Plate 2 – Surface (M6)



Plate 3 – Landscape (M6)

Horizon	Depth (m)	Description
A	0.00 – 0.15	Dark brown Silty Clay Loam (field assessment), with strong pedality. 30% coarse fragments 60 – 100mm. Many roots and well drained. Gradual boundary.
B	0.15 – 0.30	Dark reddish brown Light Clay (field assessment), with moderate pedality. 50% coarse fragments 60 – 100mm. Many roots and well drained.
C	0.35 – 0.50	Parent material



Site Description – Site M7

Site Reference	M7	ASC Name	Haplic Hypocalcic Brown Chromosol (BEKMOVNR)	
Average Slope	5%	Land Use	Grazing	Coordinates
Landform Pattern	Hillslope	Soil Fertility	Moderately High	MGA 55
Landform Element	Lower Slope	BSAL Site Status	Verified Non-BSAL	X: 687637
Surface Condition	Soft	Mapped as BSAL	No	Y: 6289264



Plate 1 – Soil Profile (M7)



Plate 2 – Surface (M7)



Plate 3 – Landscape (M7)

Horizon	Depth (m)	Description				
A	0.00 – 0.10	Dark Brown (Munsell 10YR 3/3) Silty Loam, with strong pedality. Neutral pH, non-saline. Non-sodic. No coarse fragments. Many roots and well drained. Clear boundary.				
B21	0.10 – 0.50	Dark yellowish brown (Munsell 10YR 4/4) Clay Loam, with strong pedality. Neutral pH, non-saline. Non-sodic. No coarse fragments. Many roots and 10YR 4/4d moderately drained. Clear boundary.				
B22	0.50 – 0.60	Dark brown (Munsell 10YR 3/3) Silty Loam, with weak pedality. Neutral pH, non-saline. Non-sodic. No coarse fragments. Very few and moderately drained. Clear boundary.				
C	0.60+	Parent material.				
Sample Depth	ECe		pH _(1-5water)		ESP	
	dS/m	Rating	Value	Rating	Value	Rating
0-0.10	1.1	Non-saline	6.6	Neutral	0.5	Non sodic
0.20-0.30	0.3	Non-saline	6.7	Neutral	0.6	Non sodic
0.40-0.50	0.3	Non-saline	7.1	Neutral	0.8	Non sodic
0.65-0.75	0.3	Non-saline	7.4	Mildly Alkaline	1.7	Non sodic



Site Description – Site M8

Site Reference	M8	ASC Name	Haplic Eutrophic Brown Chromosol (BEKOWNR)	
Average Slope	5%	Land Use	Grazing	Coordinates
Landform Pattern	Hillslope	Soil Fertility	Moderately High	MGA 55
Landform Element	Mid - Lower Slope	BSAL Site Status	Verified Non-BSAL	X: 687437
Surface Condition	Soft	Mapped as BSAL	No	Y: 6289333



Plate 1 – Soil Profile (M8)



Plate 2 – Surface (M8)



Plate 3 – Landscape (M8)

Horizon	Depth (m)	Description				
A1	0.00 – 0.10	Very dark brown (Munsell 7.5YR 2.5/3) Loam, with strong pedality. Neutral pH, moderately saline. Non-sodic. No coarse fragments. Many roots and well drained. Clear boundary.				
A2	0.10 – 0.40	Dark reddish brown (Munsell 5YR 3/4) Loamy Sand, with strong pedality. Neutral pH, slightly saline. Non-sodic. No coarse fragments. Common roots and moderately drained. Clear boundary.				
B2	0.40 +	Brown to strong brown (Munsell 7.5YR 4/4 to 7.5YR 5/6) Light Medium Clay to Light Clay, with strong pedality. Mildly alkaline pH, non-saline. Non-sodic. No coarse fragments. No roots and moderately drained.				
Sample Depth	ECe		pH _(1-5water)		ESP	
	dS/m	Rating	Value	Rating	Value	Rating
0-0.10	4.3	Moderately saline	6.6	Neutral	0.2	Non sodic
0.20-0.30	3.2	Slightly saline	6.6	Neutral	0.5	Non sodic
0.40-0.50	0.4	Non-saline	7.5	Mildly Alkaline	2.1	Non sodic
0.65-0.75	0.4	Non-saline	7.8	Mildly Alkaline	2.6	Non sodic



Site Description – Site M9

Site Reference	M9	ASC Name	Brown Chromosol	
Average Slope	9%	Land Use	Grazing	Coordinates
Landform Pattern	Hillslope	Soil Fertility	Moderately High	MGA 55
Landform Element	Mid Slope	BSAL Site Status	Verified BSAL	X: 687173
Surface Condition	Soft	Mapped as BSAL	Yes	Y: 6289289



Plate 1 – Soil Profile (M9)



Plate 2 – Surface (M9)



Plate 3 – Landscape (M9)

Horizon	Depth (m)	Description
A1	0.00 – 0.10	Dark brown Loam (field assessment), with strong pedality. 10% coarse fragments 20 – 200mm. Many roots and well drained. Gradual boundary.
A2	0.10 – 0.25	Light reddish brown Sandy Clay Loam (field assessment), with moderate pedality. No coarse fragments. Many roots and well drained. Clear boundary.
B21	0.25 – 0.50	Yellowish brown Medium Clay (field assessment), with strong pedality. No coarse fragments. Few roots and well drained. Gradual boundary.
B22	0.50+	Yellow Heavy Clay (field assessment), with strong pedality. No coarse fragments. No roots and moderately drained.



Site Description – Site M10

Site Reference	M10	ASC Name	Haplic Eutrophic Brown Chromosol (BFLOWNR)	
Average Slope	8%	Land Use	Grazing	Coordinates
Landform Pattern	Hillslope	Soil Fertility	Moderately High	MGA 55
Landform Element	Upper Slope	BSAL Site Status	Verified BSAL	X: 687495
Surface Condition	Soft	Mapped as BSAL	Yes	Y: 6289227



Plate 1 – Soil Profile (M10)



Plate 2 – Surface (M10)



Plate 3 – Landscape (M10)

Horizon	Depth (m)	Description				
A1	0.00 – 0.15	Very dark brown (Munsell 7.5YR 2.5/2) Silty Loam, with strong pedality. Neutral pH, non-saline. Non-sodic. No coarse fragments. Many roots and well drained. Gradual boundary.				
A2	0.15 – 0.30	Very dark brown (Munsell 7.5YR 2.5/3) Clay Loam, with moderate pedality. Neutral pH, non-saline. Non-sodic. No coarse fragments. Many roots and well drained. Clear boundary.				
B21	0.30 – 0.50	Dark yellowish brown (Munsell 10YR 4/4) Light Medium Clay, with strong pedality. Moderately alkaline pH, non-saline. Non-sodic. No coarse fragments. Very few roots and well drained. Clear boundary.				
B22	0.50+	Dark yellowish brown (Munsell 10YR 4/4) Light Medium Clay, with strong pedality. Moderately alkaline pH, non-saline. Non-sodic. No coarse fragments. No roots and moderately drained.				
Sample Depth	ECe		pH _(1-5water)		ESP	
	dS/m	Rating	Value	Rating	Value	Rating
0-0.10	1.0	Non-saline	6.6	Neutral	0.4	Non sodic
0.20-0.30	0.6	Non-saline	6.9	Neutral	0.5	Non sodic
0.40-0.50	0.6	Non-saline	7.9	Moderately Alkaline	0.9	Non sodic
0.65-0.75	0.6	Non-saline	8.3	Moderately Alkaline	1.4	Non sodic



Site Description – Site M11

Site Reference	M11	ASC Name	Haplic Eutrophic Red Chromosol (BEMOWNR)	
Average Slope	6%	Land Use	Grazing	Coordinates
Landform Pattern	Hillslope	Soil Fertility	Moderately High	MGA 55
Landform Element	Mid Slope	BSAL Site Status	Verified BSAL	X: 684220
Surface Condition	Soft	Mapped as BSAL	Yes	Y: 6289536



Plate 1 – Soil Profile (M11)



Plate 2 – Surface (M11)



Plate 3 – Landscape (M11)

Horizon	Depth (m)	Description
A1	0.00 – 0.10	Very Dark Brown (Munsell 10YR 2/2) Loam, with strong pedality. Moderately acidic pH, non-saline. Non-sodic. No coarse fragments. Many roots and moderately drained. Gradual boundary.
B2	0.10 – 0.80	Dark Reddish Brown to Light Olive Brown (Munsell 5YR 3/4 to 2.5Y 5/6) Heavy Clay with strong pedality. Neutral trending to slightly alkaline pH, non-saline. Non-sodic. No coarse fragments. Common fine roots and moderately drained.

Sample Depth	ECe		pH _(1-5water)		ESP	
	dS/m	Rating	Value	Rating	Value	Rating
0-0.10	0.4	Non-saline	6.0	Moderately Acidic	1.8	Non sodic
0.20-0.30	0.1	Non-saline	6.8	Neutral	1.0	Non sodic
0.40-0.50	0.3	Non-saline	7.3	Neutral	1.2	Non sodic
0.65-0.75	0.3	Non-saline	7.7	Mildly Alkaline	2.1	Non sodic



Site Description – Site M12

Site Reference	M12	ASC Name	Haplic Eutrophic Red Chromosol (BEMOWNR)	
Average Slope	2%	Land Use	Grazing	Coordinates
Landform Pattern	Hillcrest	Soil Fertility	Moderately High	MGA 55
Landform Element	Crest	BSAL Site Status	Verified BSAL	X: 683962
Surface Condition	Soft	Mapped as BSAL	Yes	Y: 6290230



Plate 1 – Soil Profile (M12)



Plate 2 – Surface (M12)



Plate 3 – Landscape (M12)

Horizon	Depth (m)	Description
A1	0.00 – 0.15	Very Dark Brown (Munsell 7.5YR 2.5/3) Silty Loam with strong pedality. Moderately acidic pH, non-saline. Non-sodic. No coarse fragments. Common fine roots and moderately drained. Clear boundary.
B21	0.15 – 0.40	Dark Reddish Brown (Munsell 5YR 3/4) Heavy Clay with strong pedality. Neutral pH, non-saline. Non-sodic. No coarse fragments. Common fine roots and moderately drained. Gradual boundary.
B22	0.40 – 0.80	Olive to Olive Brown (Munsell 5YR 5/6 to 2.5Y 4/3) Heavy Clay with strong pedality. Moderately alkaline trending to strongly alkaline pH, non-saline. Non-sodic. No coarse fragments. Few roots and moderately drained.

Sample Depth	ECe		pH _(1-5water)		ESP	
	dS/m	Rating	Value	Rating	Value	Rating
0-0.10	0.4	Non-saline	5.7	Moderately Acidic	1.1	Non sodic
0.20-0.30	0.3	Non-saline	7.2	Neutral	1.2	Non sodic
0.40-0.50	0.3	Non-saline	7.9	Moderately Alkaline	1.6	Non sodic
0.65-0.75	0.5	Non-saline	8.4	Strongly Alkaline	2.6	Non sodic



Site Description – Site M13

Site Reference	M13	ASC Name	Haplic Eutrophic Red Chromosol (BEMOWNR)	
Average Slope	5%	Land Use	Grazing	Coordinates
Landform Pattern	Hillslope	Soil Fertility	Moderately High	MGA 55
Landform Element	Mid Slope	BSAL Site Status	Verified BSAL	X: 684292
Surface Condition	Soft	Mapped as BSAL	Yes	Y: 6289325



Plate 1 – Soil Profile (M13)



Plate 2 – Surface (M13)



Plate 3 – Landscape (M13)

Horizon	Depth (m)	Description				
A1	0.00 – 0.15	Dark Brown (Munsell 7.5YR 3/4) Silty Clay Loam with moderate pedality. Moderately acidic pH, non-saline. Non-sodic. No coarse fragments. Common fine roots and moderately drained. Clear boundary.				
B21	0.15 – 0.40	Red (Munsell 2.5YR 4/8) Heavy Clay with strong pedality. Slightly acidic pH, non-saline. Non-sodic. No coarse fragments. Common fine roots and moderately drained. Gradual boundary.				
B22	0.40 – 0.80	Reddish-yellow to Yellowish-red (Munsell 5YR 6/8 to 5YR 5/8) Silty Clay with strong pedality. Neutral pH, non-saline. Non-sodic. No coarse fragments. Few roots and moderately drained.				
Sample Depth	ECe		pH _(1-5water)		ESP	
	dS/m	Rating	Value	Rating	Value	Rating
0-0.10	0.7	Non-saline	6.0	Moderately Acidic	1.0	Non sodic
0.20-0.30	0.3	Non-saline	6.4	Slightly Acidic	1.0	Non sodic
0.40-0.50	0.5	Non-saline	6.7	Neutral	1.5	Non sodic
0.65-0.75	0.5	Non-saline	6.7	Neutral	1.6	Non sodic



Site Description – Site 12

Site Reference	12	ASC Name	Haplic Mellic Black Kandosol (BFLWNR)	
Average Slope	2%	Land Use	Grazing	Coordinates
Landform Pattern	Alluvial Flat	Soil Fertility	Moderate	MGA 55
Landform Element	Depositional Bench	Permeability	High	X: 682793
Surface Condition	Soft	ERD	1.0m	Y: 6288162



Plate 1 – Soil Profile (12)



Plate 2 – Surface (12)



Plate 3 – Landscape (12)

Horizon	Depth (m)	Description
A1	0.00 – 0.15	Very dark brown (Munsell 10YR 2/2) Loam, with moderate pedality. Neutral pH, non-saline. Non-sodic. 10% coarse fragments 20 – 50mm. Many roots and well drained. Gradual boundary.
B21	0.15 – 0.50	Very dark brown (Munsell 10YR 2/2) Loamy Sand, with weak pedality. Mildly alkaline pH, non-saline. Non-sodic. 10% coarse fragments 20 – 50mm. Many roots and well drained. Gradual boundary.
B22	0.50 – 0.70	Very dark brown (Munsell 10YR 2/2) Loam, with weak pedality. Mildly alkaline pH, non-saline. Non-sodic. 20% coarse fragments 20 – 100mm. Many roots and well drained. Clear boundary.
B23	0.70+	Rock layer. 90% coarse fragments 50 – 100m.

Sample Depth	ECe		pH _(1-5water)		ESP	
	dS/m	Rating	Value	Rating	Value	Rating
0-0.10	0.5	Non-saline	7.1	Neutral	0.5	Non sodic
0.20-0.30	0.8	Non-saline	7.4	Mildly Alkaline	0.6	Non sodic
0.50-0.60	0.3	Non-saline	7.8	Mildly Alkaline	0.7	Non sodic



Site Description – Site 13

Site Reference	13	ASC Name	Haplic Eutrophic Brown Dermosol (BGKOW)	
Average Slope	24%	Land Use	Grazing	Coordinates
Landform Pattern	Hillslope	Soil Fertility	Moderately High	MGA 55
Landform Element	Lower Slope	Permeability	Moderate	X: 682772
Surface Condition	Soft	ERD	1.0m	Y: 6287939



Plate 1 – Soil Profile (13)



Plate 2 – Surface (13)



Plate 3 – Landscape (13)

Horizon	Depth (m)	Description
A1	0.00 – 0.15	Very dark brown (Munsell 10YR 2/2) Loamy Sand, with strong pedality. Neutral pH, non-saline. Non-sodic. 5% coarse fragments 10 – 20mm. Many roots and well drained. Gradual boundary.
A2	0.15 – 0.35	Very dark brown (Munsell 7.5YR 2.5/3) Loam, with moderate pedality. Neutral pH, non-saline. Non-sodic. 5% coarse fragments 10 – 20mm. Common roots and well drained. Gradual boundary.
B22	0.35 – 0.80	Dark Brown (Munsell 7.5YR 3/4) Clay Loam, with strong pedality. Neutral pH, non-saline. Non-sodic. 5% coarse fragments 10 – 20mm. Common roots and moderately drained. Clear boundary.
B22	0.80+	Very dark brown (Munsell 7.5YR 2.5/2) Light-medium Clay, with strong pedality. Slightly acidic pH, non-saline. Non-sodic. No coarse fragments. Common roots and moderately drained.

Sample Depth	ECe		pH _(1-5water)		ESP	
	dS/m	Rating	Value	Rating	Value	Rating
0-0.10	1.1	Non-saline	7.0	Neutral	0.3	Non sodic
0.20-0.30	0.3	Non-saline	6.9	Neutral	0.5	Non sodic
0.50-0.60	0.2	Non-saline	6.9	Neutral	1.5	Non sodic
0.80-0.90	0.1	Non-saline	6.4	Slightly Acidic	1.4	Non sodic



Site Description – Site 14

Site Reference	14	ASC Name	Haplic Eutrophic Red Dermosol (BHMOV)	
Average Slope	21%	Land Use	Grazing	Coordinates
Landform Pattern	Hillslope	Soil Fertility	Moderately High	MGA 55
Landform Element	Mid Slope	Permeability	Moderate	X: 682403
Surface Condition	Soft	ERD	0.55	Y: 6287650



Plate 1 – Soil Profile (14)



Plate 2 – Surface (14)



Plate 3 – Landscape (14)

Horizon	Depth (m)	Description
A	0.00 – 0.15	Dark reddish-brown (Munsell 5YR 3/4) Clay Loam, with strong pedality. Slightly acidic pH, non-saline. Non-sodic. 40% coarse fragments 10 – 50mm. Many roots and well drained. Gradual boundary.
B2	0.15 – 0.55	Yellowish-red (Munsell 5YR 4/6) Medium Clay, with strong pedality. Mildly alkaline pH, non-saline. Non-sodic. 80% coarse fragments 10 – 50mm. Few roots and well drained. Clear boundary.
C	0.55 +	Parent material.

Sample Depth	ECe		pH _(1-5water)		ESP	
	dS/m	Rating	Value	Rating	Value	Rating
0-0.10	0.5	Non-saline	6.1	Slightly Acidic	0.4	Non sodic
0.30-0.40	0.3	Non-saline	7.7	Mildly Alkaline	0.4	Non sodic



Site Description – Site 15

Site Reference	15	ASC Name	Basic Paralithic Leptic Tenosol (BHL-UNR)	
Average Slope	24%	Land Use	Grazing	Coordinates
Landform Pattern	Hillslope	Soil Fertility	Low	MGA 55
Landform Element	Mid Slope	Permeability	Moderate	X: 682798
Surface Condition	Soft	ERD	0.15	Y: 6288794



Plate 1 – Soil Profile (15)



Plate 2 – Surface (15)



Plate 3 – Landscape (15)

Horizon	Depth (m)	Description
A1	0.00 – 0.15	Very dark brown (Munsell 7.5YR 2.5/2) Loam, with moderate pedality. Moderately acidic pH, non-saline. Non-sodic. 20% coarse fragments 20 – 60mm. Many roots and well drained. Clear boundary.
C	0.15+	Weathered parent material.

Sample Depth	ECe		pH _(1-5water)		ESP	
	dS/m	Rating	Value	Rating	Value	Rating
0-0.10	0.6	Non-saline	5.7	Moderately Acidic	0.4	Non sodic



Site Description – Site 16

Site Reference	16	ASC Name	Haplic Eutrophic Red Chromosol (BGMOUNR)	
Average Slope	30%	Land Use	Grazing	Coordinates
Landform Pattern	Hillslope	Soil Fertility	Moderately High	MGA 55
Landform Element	Mid Slope	Permeability	High	X: 683592
Surface Condition	Soft	ERD	0.3m	Y: 6288629



Plate 1 – Soil Profile (16)



Plate 2 – Surface (16)



Plate 3 – Landscape (16)

Horizon	Depth (m)	Description
A	0.00 – 0.10	Dark brown (Munsell 7.5YR 3/4) Clay Loam, with moderate pedality. Moderately acidic pH, non-saline. Non-sodic. 10% coarse fragments 50 – 150mm. Common roots and well drained. Clear boundary.
B	0.10 – 0.30	Yellowish-red (Munsell 5YR 4/6) Light Clay, with moderate pedality. Neutral pH, non-saline. Non-sodic. No coarse fragments. Few roots and moderately drained. Clear boundary.
C	0.30 +	Parent material.

Sample Depth	ECe		pH _(1-5water)		ESP	
	dS/m	Rating	Value	Rating	Value	Rating
0-0.10	0.5	Non-saline	5.8	Moderately Acidic	0.8	Non sodic
0.20-0.30	0.2	Non-saline	6.6	Neutral	1.2	Non sodic
0.40-0.50	0.1	Non-saline	6.6	Neutral	1.1	Non sodic



Site Description – Site 17

Site Reference	17	ASC Name	Mottled Eutrophic Red Chromosol (BE00WNR)	
Average Slope	8%	Land Use	Grazing	Coordinates
Landform Pattern	Hillslope	Soil Fertility	Moderately High	MGA 55
Landform Element	Upper Slope	Permeability	High	X: 684036
Surface Condition	Soft	ERD	0.8m	Y: 6288478



Plate 1 – Soil Profile (17)



Plate 2 – Surface (17)



Plate 3 – Landscape (17)

Horizon	Depth (m)	Description
A1	0.00 – 0.15	Dark brown (Munsell 7.5YR 3/2) Clay Loam, with strong pedality. Slightly acidic pH, non-saline. Non-sodic. 10% coarse fragments 20 – 50mm. Many roots and well drained. Clear boundary.
B21	0.15 – 0.50	Dark reddish-brown (Munsell 5YR 4/4) Heavy Clay, with strong pedality. Neutral pH, non-saline. Non-sodic. No coarse fragments. 10% faint yellow mottles. Few roots and moderately drained. Gradual boundary.
B22	0.50 – 1.00	Dark brown to yellowish brown (Munsell 7.5YR 3/4 to 10YR 5/4) Medium Clay to Heavy Clay, with strong pedality. Neutral trending to moderately alkaline pH, non-saline. Non-sodic. No coarse fragments. 20% faint red mottles. Few roots and moderately drained.
C	1.00+	Parent material

Sample Depth	ECe		pH _(1-5water)		ESP	
	dS/m	Rating	Value	Rating	Value	Rating
0-0.10	0.3	Non-saline	6.3	Slightly Acidic	0.9	Non sodic
0.20-0.30	0.2	Non-saline	7.3	Neutral	1.4	Non sodic
0.40-0.50	0.3	Non-saline	7.1	Neutral	1.3	Non sodic
0.65-0.75	0.2	Non-saline	7.8	Moderately Alkaline	1.8	Non sodic



Site Description – Site 18

Site Reference	18	ASC Name	Haplic Eutrophic Red Chromosol (BGMOVNR)	
Average Slope	22%	Land Use	Grazing	Coordinates
Landform Pattern	Hillslope	Soil Fertility	Moderately High	MGA 55
Landform Element	Mid Slope	Permeability	Moderate	X: 683599
Surface Condition	Soft	ERD	0.6m	Y: 6287597



Plate 1 – Soil Profile (18)



Plate 2 – Surface (18)



Plate 3 – Landscape (18)

Horizon	Depth (m)	Description
A1	0.00 – 0.20	Dark brown (Munsell 7.5YR 3/3) Clay Loam, with strong pedality. Moderately acidic pH, non-saline. Non-sodic. 20% coarse fragments 20 – 200mm. Many roots and well drained. Clear boundary.
B2	0.20 – 0.60	Dark red (Munsell 2.5YR 3/6) Heavy Clay, with moderate pedality. Slightly acidic pH, non-saline. Non-sodic. 20% coarse fragments 20 – 200mm. Few roots and well drained. Clear boundary.
C	0.60+	Parent material.

Sample Depth	ECe		pH _(1-5water)		ESP	
	dS/m	Rating	Value	Rating	Value	Rating
0-0.10	0.4	Non-saline	5.8	Moderately Acidic	1.4	Non sodic
0.30-0.40	0.1	Non-saline	6.3	Slightly Acidic	0.9	Non sodic
0.70-0.80	0.1	Non-saline	6.6	Neutral	0.3	Non sodic



Site Description – Site 19

Site Reference	19	ASC Name	Haplic Eutrophic Brown Dermosol (BH00U)	
Average Slope	15%	Land Use	Grazing	Coordinates
Landform Pattern	Hillslope	Soil Fertility	Moderately High	MGA 55
Landform Element	Mid Slope	Permeability	High	X: 684296
Surface Condition	Soft	ERD	0.4m	Y: 6287724



Plate 1 – Soil Profile (19)



Plate 2 – Surface (19)



Plate 3 – Landscape (19)

Horizon	Depth (m)	Description
A1	0.00 – 0.15	Dark brown (Munsell 7.5YR 3/4) Silty Clay, with strong pedality. Slightly acidic pH, non-saline. Non-sodic. 20% coarse fragments 20 – 200mm. Many roots and well drained. Gradual boundary.
B2	0.15 – 0.40	Very dark brown (Munsell 7.5YR 2.5/3) Heavy Clay, with moderate pedality. Neutral pH, non-saline. Non-sodic. 30% coarse fragments 20 – 200mm. Common roots and well drained. Clear boundary.
C	0.40+	Parent material.

Sample Depth	ECe		pH _(1.5water)		ESP	
	dS/m	Rating	Value	Rating	Value	Rating
0-0.10	0.5	Non-saline	6.1	Slightly Acidic	0.9	Non sodic
0.25-0.35	0.1	Non-saline	6.9	Neutral	0.7	Non sodic



Site Description – Site 8 (2023)

Site Reference	8 (2023)	ASC Name	Yellow Chromosol	
Average Slope	6%	Land Use	Pasture for grazing	Coordinates
Landform Pattern	Hillslope	Soil Fertility	Moderately High	MGA 55
Landform Element	Mid Slope	Permeability	Moderate	X: 684509
Surface Condition	Soft	ERD	0.6	Y: 6294259



Plate 1 – Soil Profile



Plate 2 – Landscape



Plate 3 – Surface

Horizon	Depth (m)	Description
A1	0.00 – 0.15	Brown (Munsell 10YR 4/3) Loam with moderate pedality. No coarse fragments. Many roots and well drained. Clear boundary.
A2	0.20 – 0.30	Bleached light brown (Munsell 10YR 7/1) Loamy Sand with weak pedality. No coarse fragments. Common roots and imperfectly drained. Clear boundary.
B2	0.30 +	Olive yellow (Munsell 2.5Y 6/6) Heavy Clay with strong pedality. No coarse fragments. Trace roots and imperfectly drained. 20% distinct grey mottling.

