

**From:** [Brian Tomalin](#)  
**To:** [IPCN Enquiries Mailbox](#)  
**Subject:** Hills of Gold Wind Farm  
**Date:** Friday, 2 February 2024 9:56:56 AM  
**Attachments:** [Hanging Rock Fire Scenario.ppt](#)

---

Bushfire Modelling from Brian Tomalin Senior Deputy Captain Hanging Rock RFS  
Shows the rapid Spread of fire in the steep terrain  
Brian Tomalin  
Sent from [Mail](#) for Windows

# Hanging Rock Fire Scenario

- Temperature: 28°
- Humidity: 40%
- Wind direction: North West
- Wind speed: 15-20kmh



1230

© 2010 Cnes/Spot Image  
Image © 2010 GeoEye

©2010 Google

Imagery Dates: May 12, 2002 - Apr 1, 2003

31°29'32.39" S 151°10'39.08" E elev 1026 m

Eye alt: 7.65 km



1330

© 2010 Cnes/Spot Image  
Image © 2010 GeoEye

©2010 Google

Imagery Dates: May 12, 2002 - Apr 1, 2003

31°29'32.39" S 151°10'39.08" E elev 1026 m

Eye alt: 7.65 km



1430

© 2010 Cnes/Spot Image  
Image © 2010 GeoEye

©2010 Google

Imagery Dates: May 12, 2002 - Apr 1, 2003

31°29'32.39" S 151°10'39.08" E elev 1026 m

Eye alt: 7.65 km



1530

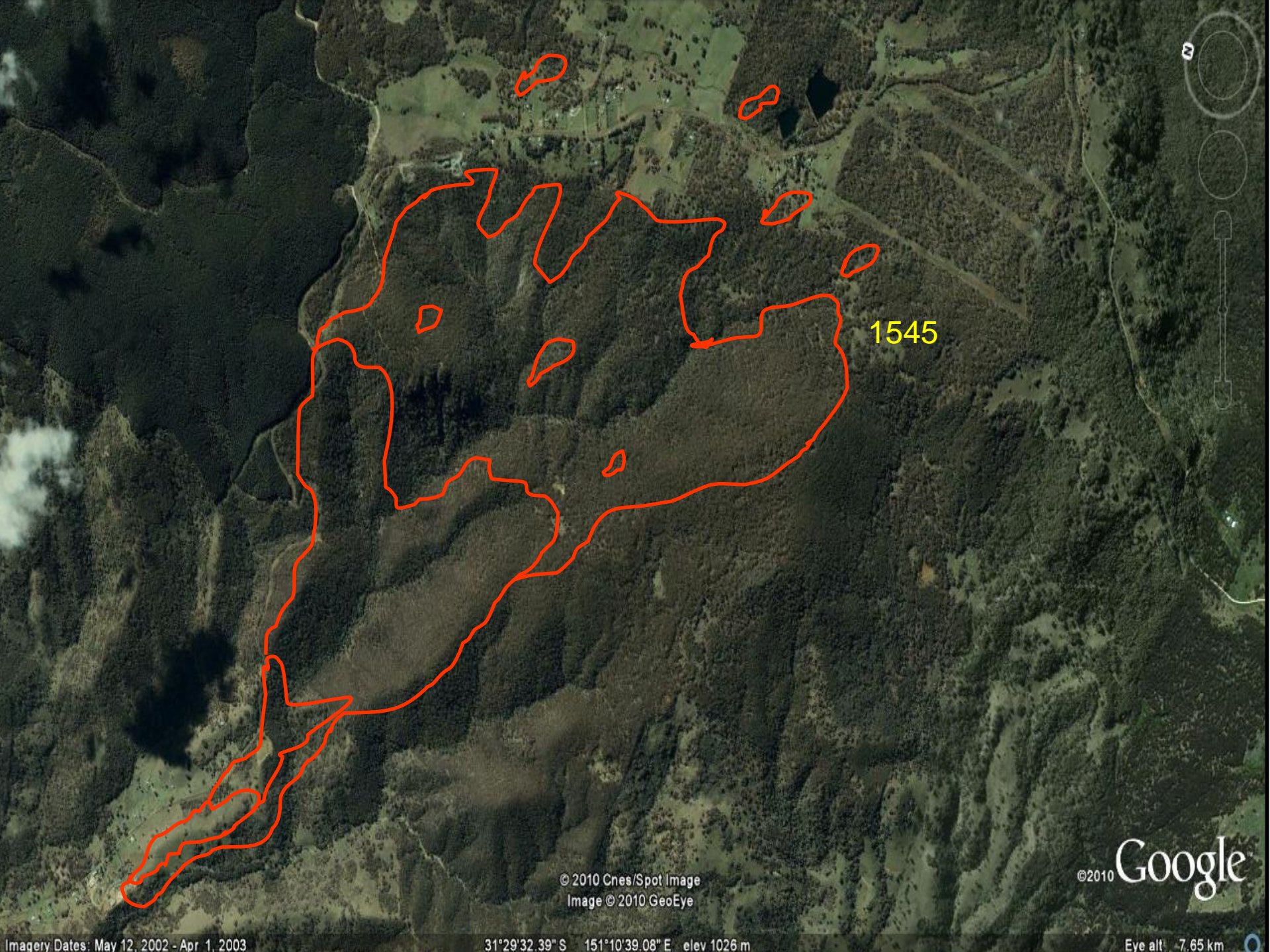
© 2010 Cnes/Spot Image  
Image © 2010 GeoEye

©2010 Google

Imagery Dates: May 12, 2002 - Apr 1, 2003

31°29'32.39" S 151°10'39.08" E elev 1026 m

Eye alt: 7.65 km



1545

© 2010 Cnes/Spot Image  
Image © 2010 GeoEye

©2010 Google

Imagery Dates: May 12, 2002 - Apr 1, 2003

31°29'32.39" S 151°10'39.08" E elev 1026 m

Eye alt: 7.65 km