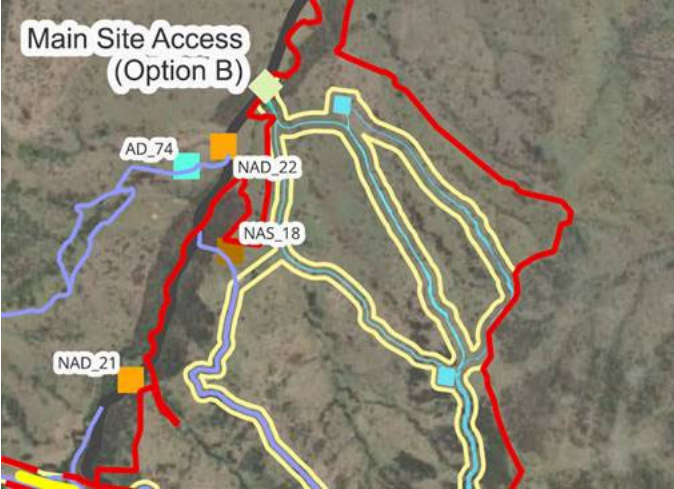
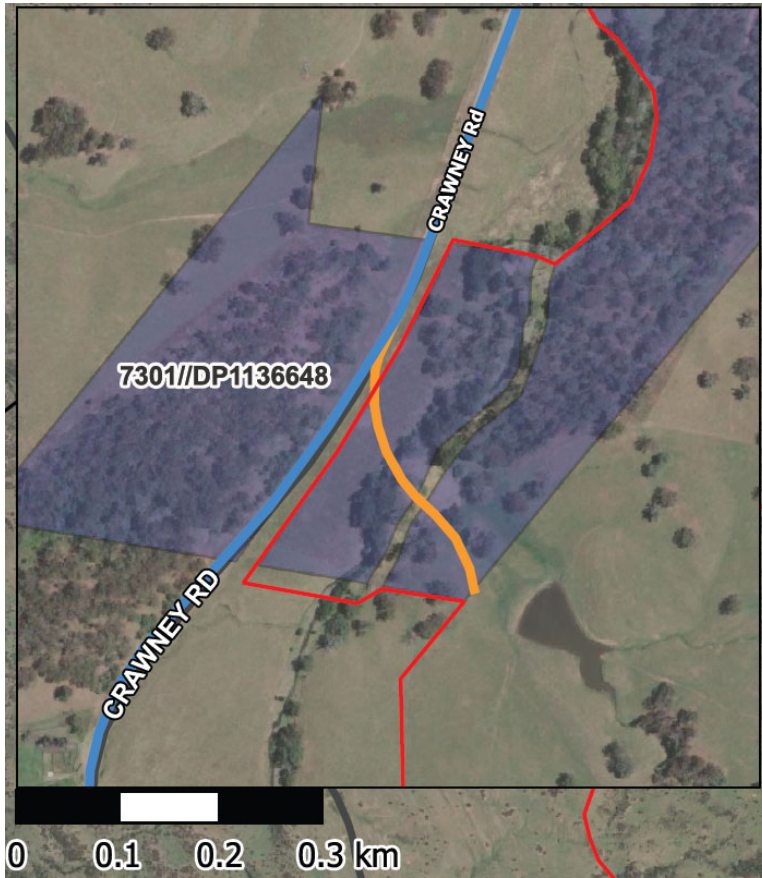


# Attachment A – Request for further information / clarification

| Item   | Request for information / clarification   |
|--|---|
| <p><b>APPENDIX 1</b><br/>General layout of the development</p> | <p>The Commission requests the following clarifications on the provided map:</p> <ul style="list-style-type: none"> <li>• Include consistent wind turbine labelling (ie. explanation and consistent use of acronyms including WTG and WP) to improve legibility;</li> <li>• Include clarification of legend items to avoid conflicting colours/graphics on the map;</li> <li>• Legend to include all items illustrated on the map; and</li> <li>• Clarification of the ‘temporary footprint’ and ‘development corridor’ located near Main Site Access (Option B):</li> </ul>  |
| <p><b>APPENDIX 5</b><br/>Biodiversity</p>                      | <p>Clarification of why the ecosystem credit liability and impact in hectares for some plant community types has reduced.</p>   |
| <p><b>APPENDIX 7</b><br/>Haulage route and road upgrades</p>   | <p>Update the Transport Route – Nundle to Site inset to remove the blue line which extends south down Crawney Road, beyond Site Entrance - Option B:</p>  |



**Appendix 6  
Heritage Items**

The Commission requests the following clarifications on the provided map:

- Include consistent wind turbine labelling (ie. explanation and consistent use of acronyms including WTG and WP) to improve legibility;
- Include clarification of legend items to avoid conflicting colours/graphics on the map; and
- Legend to include all items illustrated on the map.