

IPC Presentation

15th February 2023

Lue Action Group

Tom Combes



Lue Action Group

- Formed in 2011 as a subcommittee of Bingman Landcare.
- The Lue Action Group (LAG) are community members concerned about the social, environmental and economic future of the district.
- Formed to ensure that development in the region is undertaken in a responsible manner – protecting our community, its residents and the long-term environment.
- **Education about the Bowdens mine is the current key focus.**

BALANCE

- Acid mine drainage.
- Loss of jobs and economic benefits to other business due to insufficient water for the project.
- Threats to Agricultural Production
- Health impacts from Lead
- Threats to tourism
- Noise.
- Traffic.
- Night Light
- Loss of property values.
- Destruction to Environment
- Short 16 year Mine Life.



- Jobs
- Royalties to Government
- Sponsorship/Advertising

Inaccurate Modelling



- Wind
- Water
- Noise
- IPC do not have any real data to make informed decisions.

Community Consultative Committee

- CCC Members represented a balanced cross section of the Community.
- Community Members of the CCC were expelled from the CCC when it was a Bowdens initiative after Bowdens became aware that the general opinion across the CCC was that the project had flaws.
- Minutes were adjusted. Members began to take their own minutes.
- President admitted that they were disclosing too much information and it was compromising the project.
- Independent chair was coerced by the proponent.
- Members were reinstated when it became a Government initiative.
- Indicates Bowdens unwillingness to listen to community concerns or advise and adapt.
- President and CEO of Bowdens resigned from the CCC and excluded themselves from open dialogue with the community. Happy to be a part of it when they were in charge but resigned when they were not.
- Bowdens openly admitted that the figures for water had little to do with reality.
- Minutes of these meetings are useful.

Bowdens is not compatible with current local land uses



AGRICULTURE



TOURISM



LIFESTYLE



Agriculture has been a major industry in the Lawson Creek Valley for 200 years

- Without water we are out of business.
- My Family has run a continuous Ag business on the same farm for 100 years. My son Ted is 30 years old. He is the 5th generation. He just got engaged.
- Lue Station is a major employer.
- Local knowledge has not been used in the assessment of the Project.
- Record keeping and significant knowledge stored on surrounding farms has been ignored.
- Data used has come from other locations.
- No Lawson Creek water flow is used.
- Modelling is not accurate.
- Farmers have developed a plan how to operate during difficult times.
- Why is a Mine job more important than an Ag job?

Agriculture – Lawsons Creek 11th Sept 2019

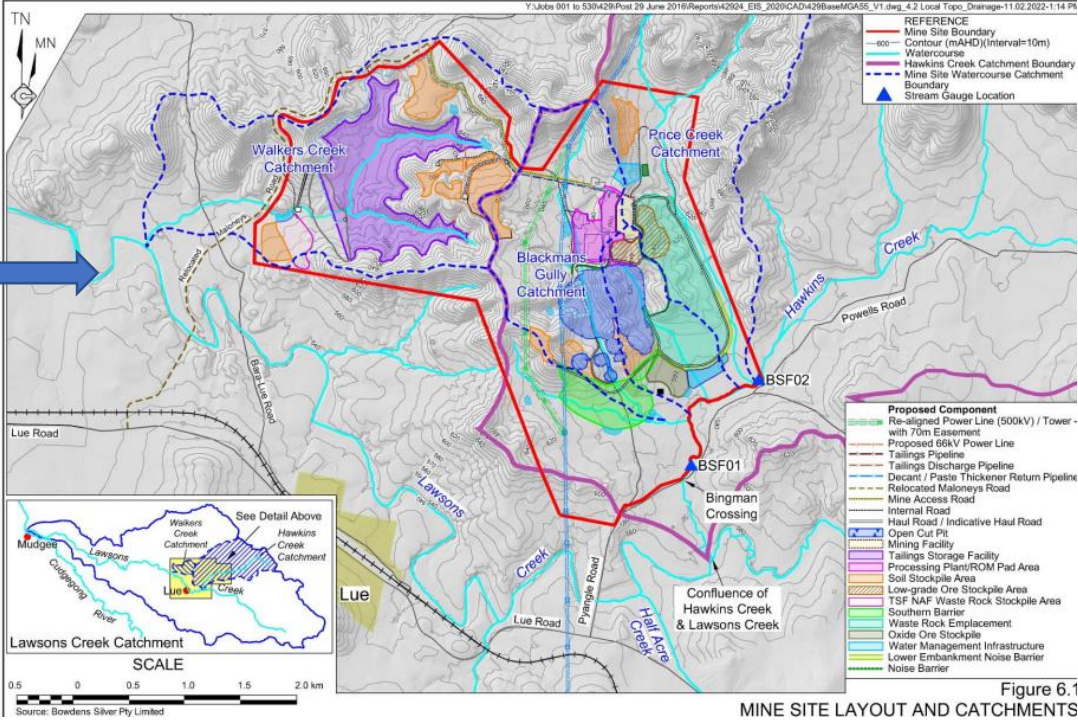


Figure 6.1
MINE SITE LAYOUT AND CATCHMENTS

Variable Climate



DPE Recommendations unrealistic

- DPE Recommends a Water plan be created. This is a key component of the Mine and should have been addressed in the EIS.
 - DPE recommends compensatory water is to be supplied.
 - How will they get it to Landowners?
 - Where from? Bowdens won't have any water either.
 - When? When will they supply.
 - If they cannot supply, they must compensate. How will that be proven?
 - Drought already a significant cost to Government. There is no guarantee the Mine will have the cash.
 - What we recommend is
 1. A complete water plan be created prior to IPC Determination.
 2. An external water source for the mine Required. 100% of water required.

Tourism

ADJACENT TO THE MINE

- Louee Motocross
 - Established 1993
 - 15,000 Visitors annually.
 - 21 employees
- Odd Frog Lodges
- Lue Hotel.
- Elephant Mountain House
- Lue Station B&B
- Lue Pottery
- Wyuna Farm Stay
- Camphill
- Old Bara.
- Why is a Mine Job more important than a tourism job?



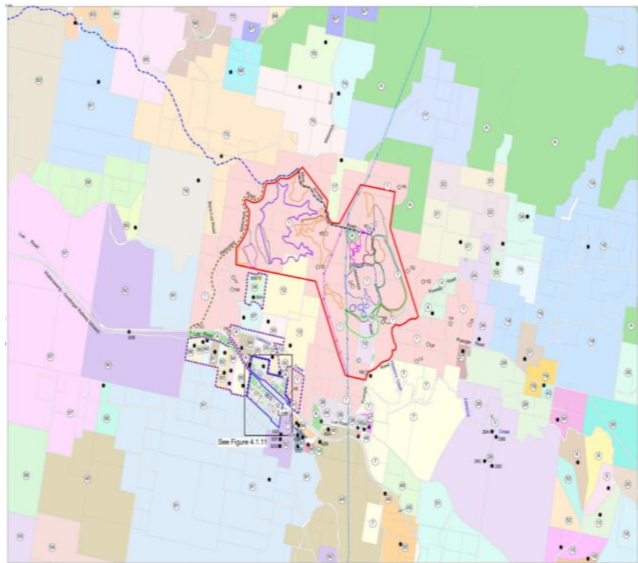


Figure 4.1.1
LAND OWNERSHIP AND RESIDENCES
LUE SURROUND

Lifestyle.

- impact on lifestyle caused by such factors as visible mine infrastructure, noise, dust and traffic.
- significantly reduces the number of buyers who will contemplate a purchase.
- one of the first questions often asked by potential real estate buyers is 'are there any proposed mining developments in the area'. If the answer is yes, most buyers will immediately move on.
- What does that tell you for the people that are already living there?
- Questions also asked are the likely effect of any possible reduction in water quality or quantity. Particularly for farms.
- suggest a negative price impact in the range of twenty per cent to thirty per cent is not, in my opinion, unreasonable.
- How do you compensate Families that have lived there for generations?
- Why is a Mine Job more important than someone's home?

Bowdens not compatible with current local land uses



AGRICULTURE



TOURISM



LIFESTYLE

IPC approval of the mine at this stage could reflect a failure of due process.

1. The SEARs have not been met in key 'mine viability-determining' areas.
2. The IPC Commissioners have not been provided with the evidence they need to make a properly-informed decision – i.e. it's not approval-ready.
3. Referring these key unanswered questions to the Conditions of Consent lowers the bar of approval - as the revised management plans will not be reviewed by the IPC but rather the Planning Secretary (who may well not request independent review by DPE's external experts).
4. This process unfairly gives the mine a 'foot in the door' – a foot that may be very hard to remove down the track.
5. It would be a failure of due process for the IPC to take this pathway without first seeing these revised management plans and confirming that the SEARs have indeed been met.



NSW RURAL FIRE SERVICE

- **I speak as the Captain. Not as a spokesperson for the Rural Fire Service.**
- **Lue Havilah RFS is one of the Strongest Brigades in the Cudgegong Region**
- **Lue Havilah RFS is in a high fire risk area.**
- **Brigade area comprises some 230 Square Kilometers.**
- **Members are Agricultural Landowners and Village Residents.**
- **Long Term Residents make up all the Experienced Crew Leaders in the Brigade.**
- **Significant erosion of Brigade members since Bowdens came to town. President and Secretary left due to expected mine impacts. Senior Deputy Captain and Catering Officer were bought out by the Mine.**
- **Fact; when mines move into the area, the people move out. RFS Brigades loose their volunteers. Areas become vulnerable.**
- **Lue Havilah RFS have refused sponsorship from Bowdens because they felt they were being used. Donations and Philanthropy is welcomed, porkbarreling is not.**
- **At a fire incident recently at the Bowdens site, Bowdens Staff did not assist, left work and locked the RFS inside the property.**



NSW RURAL FIRE SERVICE

- **Recommend conditions to ensure RFS Capacity and resources remains strong.**
- **Water security is critical for fire fighting. Fires are at there worst when it is dry and water is scarce.**
- **Mine must have external water source as to maintain current RFS water sites.**
- **Volunteers are critical to maintain a working Brigade.**
- **Time is the critical factor in fire fighting. It takes 15 minutes from ignition to destruction of a home. Fires move fast and cost to Government and Community is significant.**
- **Bowdens have a policy that no employees are permitted to occupy their residences. What this does is removes persons connected to the area. If they live and work here, they connect. Those people that are connected join the RFS.**
- **Lue Havilah is a needs based brigade. People volunteer because they have something to lose. Evidence is that Lue Havilah Brigade is stronger than the Brigade of the Town of Rylstone.**
- **Lue Brigade members required to travel long distances to where Mines have eroded communities and there are no longer any volunteers.**
- **Consideration given that some Volunteers do not like the mine. What happens when there is a fire on the site?**
- **The mine is dividing the community and the Local RFS. Local Hotel was a meeting place for a cool beer and a debrief. No longer occurs because mine owners purchased the Local Hotel. How do we fix that?**