



Kariong Sand and Soil Supplies

Public Meeting Convened by the
Independent Planning Commission

Presentation by the applicant

9th November 2021

Overview of presentation

- About the applicant
- Project need
- Proposed development area
- Environmental controls in place and additional controls adopted
- Staged increases in operations and validation of performance
- Ongoing monitoring and environmental management commitments
- Further information





About the applicant

Kariong Sand and Soil Supplies is owned by family business Davis Earthmoving & Quarrying Pty Ltd (DEQ)

DEQ is a family company operating for more than 50 years, providing earthmoving and recycling services across NSW





Project need

- The facility is needed as few recycling facilities exist in the Central Coast
- Recycling rates are stubbornly low in the Central Coast and Hunter – only 44%
- NSW Government target of 80% recycling for household, business and construction waste by 2030
- The Hunter and Central Coast has a shortfall of more than 461,000 tonnes per year of recycling capacity for construction materials and more than 250,000 tonnes per year of household waste to reach recycling targets
- Did you know?
 - Recycling creates 9.2 jobs on average for 10,000 tonnes of waste
 - Landfill creates only 2.8 jobs for every 10,000 tonnes of waste

Quality recycled building & landscaping supplies that will be produced:



10mm Crushed Concrete Aggregate



20mm Crushed Concrete Aggregate



30mm Crushed Concrete Aggregate



Oversize Crushed Concrete Aggregate



Crushed Terracotta Tile



Crusher Sand / Bedding Sand



Recycled Road Base



Crushed Asphalt

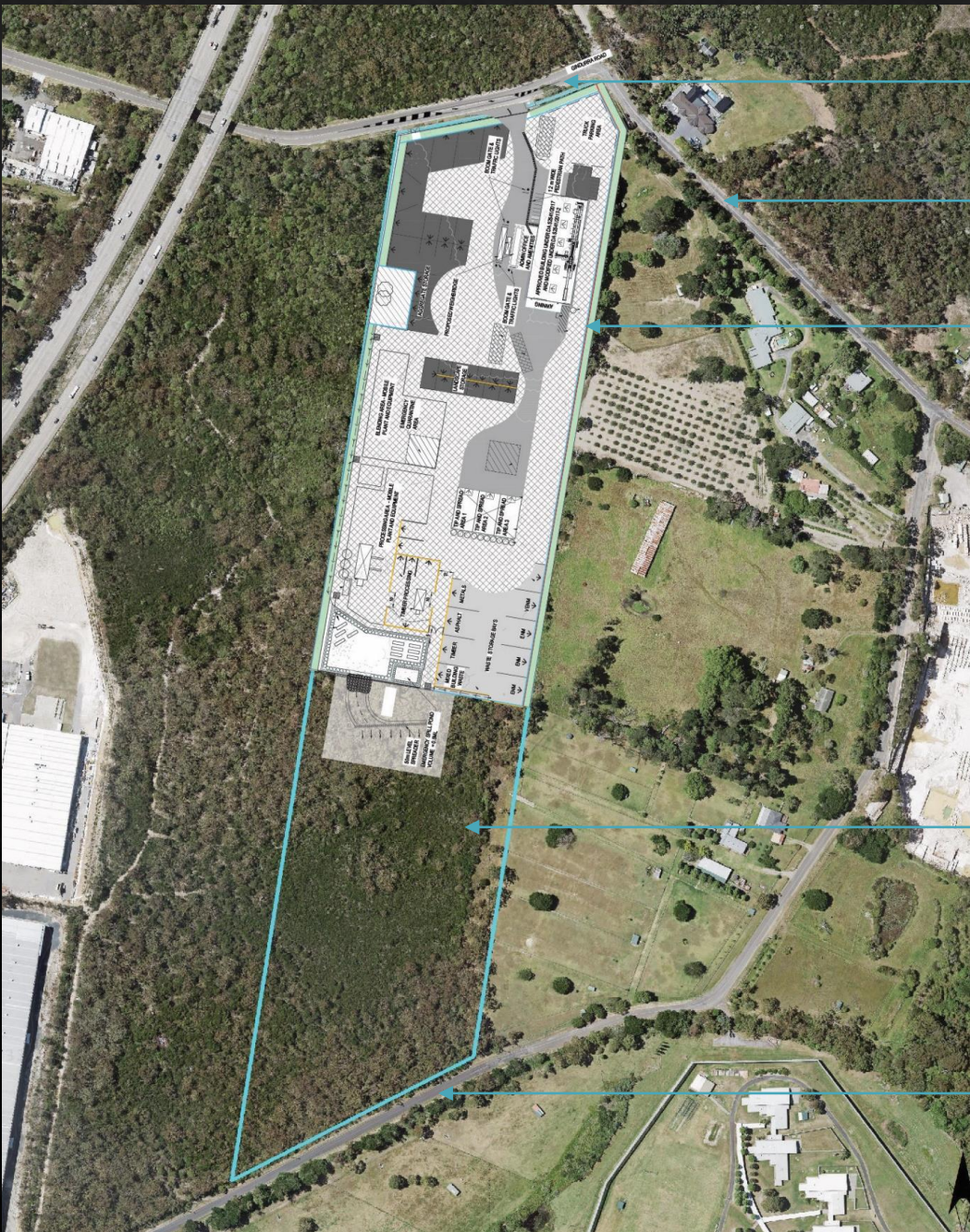


Crushed Sandstone



Mulch

Proposed development area



Gindurra Rd

Debenham Rd South

Overlay of proposed development on the lot

Bushland to be retained

Kangoo Rd

Environmental controls in place



Site entry and exit – concrete kerbing will prevent RH turn onto Debenham Rd – all traffic through industrial park only

Staff parking

Noise, air quality monitoring and weather station

Secondary Sorting Warehouse with internal misting system

Sealed pavements for protecting groundwater quality

5m noise wall and aesthetic landscaping along boundary

Enclosed tipping building with misting system with rainwater capture

Enclosed mulcher building with misting system

Waste storage bays with bay mounted sprinklers for dust control

Product storage bays with bay mounted sprinklers for dust control

Bioswales and GPTs for stormwater treatment

Enclosed crusher building with misting system

Membrane filtration plant and tank storage to supply water for site dust suppression system

Additional noise barriers

Emergency spill pond

Water quality pond

Additional controls implemented between 1st & 2nd EIS exhibition

- Additional enclosures around Crusher building to control dust emissions.
- Additional enclosures around Mulcher building to control dust emissions.
- Additional concrete walls on-site for further noise attenuation.
- Installation of weather station on-site.
- The gate at the site entrance has been recessed 26m to allow a 26m vehicle to wait at the site entrance without impacting traffic along Gindurra Rd.
- Upgrades to the stormwater treatment train, increased the size of the OSD pond, emergency spill pond and membrane filtration plant to maximise stormwater reuse.
- Staged operational increases, with each increase in annual throughput dependent on validation of environmental performance.
- Commitment to continuous monitoring of noise and air quality.

Staged increase in operations – Verifying the performance of the development

Stage I - Commence operations with a limit of 100,000 tpa

- Fully construct site as per plans (except for second weighbridge)
- DPIE approval of management plans
- Undertake Post Commissioning Air Quality Monitoring, Noise Monitoring, Traffic Monitoring and Water Monitoring Reports (within 3 months) to validate modelling
- Update environmental controls and contingency measures (if needed)
- Submit to DPIE for approval

Stage II - Scale up to 150,000 tpa

- Prior to scale up approval:
 - Install 2nd weighbridge
 - Prepare Verification reports for Air quality, Noise, Traffic and Water on the environmental performance of the development
 - DPIE approval of management plans (addressing any additional mitigation measures)
- Post scale up approval:
 - Undertake Post Commissioning Air Quality Monitoring, Noise Monitoring, Traffic Monitoring and Water Monitoring Reports (within 3 months) to validate modelling
 - Update environmental controls and contingency measures (if needed)
 - Submit to DPIE for approval

Staged increase in operations – Verifying the performance of the development

Stage III - Scale up to 200,000 tpa

- Prior to scale up approval:
 - Prepare Verification reports for Air quality, Noise, Traffic and Water on the environmental performance of the development
 - DPIE approval of management plans (addressing any additional mitigation measures)
- Post scale up approval:
 - Undertake Post Commissioning Air Quality Monitoring, Noise Monitoring, Traffic Monitoring and Water Monitoring Reports (within 3 months) to validate modelling.
 - Update environmental controls and contingency measures (if needed)
 - Submit to DPIE for approval

Ongoing monitoring and environmental management commitments

- Operational Environmental Management Plan to include plans for:
 - Water and stormwater
 - Air quality
 - Noise
 - Traffic
 - Waste
 - Biodiversity
 - Aboriginal Cultural Heritage.
- Environmental monitoring:
 - Meteorological station and air quality monitoring (continuous)
 - Noise and vibration (continuous)
 - Traffic counts
 - Water quality (monthly & at overflow events)
 - Waste amounts and type (continuous – every truck)
- Community engagement:
 - Community Consultative Committee
 - Complaints register
 - Website

Thank you

For more information and project updates see:

<https://www.karionsandandsoil.com.au/>

Contacts:

- Dr Mark Jackson, Jackson Environment and Planning Pty Ltd
- Eric Davis, Davis Earthmoving and Quarrying Pty Ltd