



# TAHMOOR SOUTH PROJECT

## INDEPENDENT PLANNING COMMISSION

### PUBLIC HEARING

15 FEBRUARY 2021

SIMEC MINING  
[simecsvg.com](http://simecsvg.com)

MEMBER OF





# Introductions

Peter Vale  
*Head of Coal Mines*

Sanjeev Gupta  
*Executive Chairman, GFG Alliance*





# Tahmoor South Project

- A vital step in the transition to carbon neutrality by 2030 (CN30):
  - bridges the gap, keeps staff employed & supports Australian manufacturing, while we explore new technologies in steelmaking.
  - continued supply of high quality coking coal during this period.
- Carefully considered long-term strategy.
- Many years of technical investigations.
- Consultation with government agencies.
- Consultation with the community and other stakeholders.





# Tahmoor South Project

- A brownfield project
- An extension of mining within existing mining leases using existing infrastructure.
- Same mining method, same type of mining equipment, same coal seam.
- Continued employment of 400 people for another 10 years, plus flow on benefits to local businesses.
- Additional 50 to 175 positions during construction of new infrastructure.
- Net benefit to NSW of \$664.9 Million (NPV) and \$137.5 Million to the local region (Wollondilly LGA).





# Summary of project evolution & amendments

## 1. Mine plan

- Shortening of LW blocks to ensure **no mining beneath the Sydney water drinking catchment & significant Aboriginal sites** (*pre-EIS submission*).
- Change in LW configuration & dimensions to **reduce subsidence** – 2 series of shorter panels adopted, reduced width and extraction height, removed LW109 (*1<sup>st</sup> amendment*).
- Removed LW107B and LW108B **to reduce footprint of subsidence** (*2<sup>nd</sup> amendment*).

## 2. REA design

- Footprint extension removed from the project to avoid clearing of threatened species and communities.

## 3. Ventilation shafts and transmission lines

- Reduced footprint to avoid vegetation clearing.



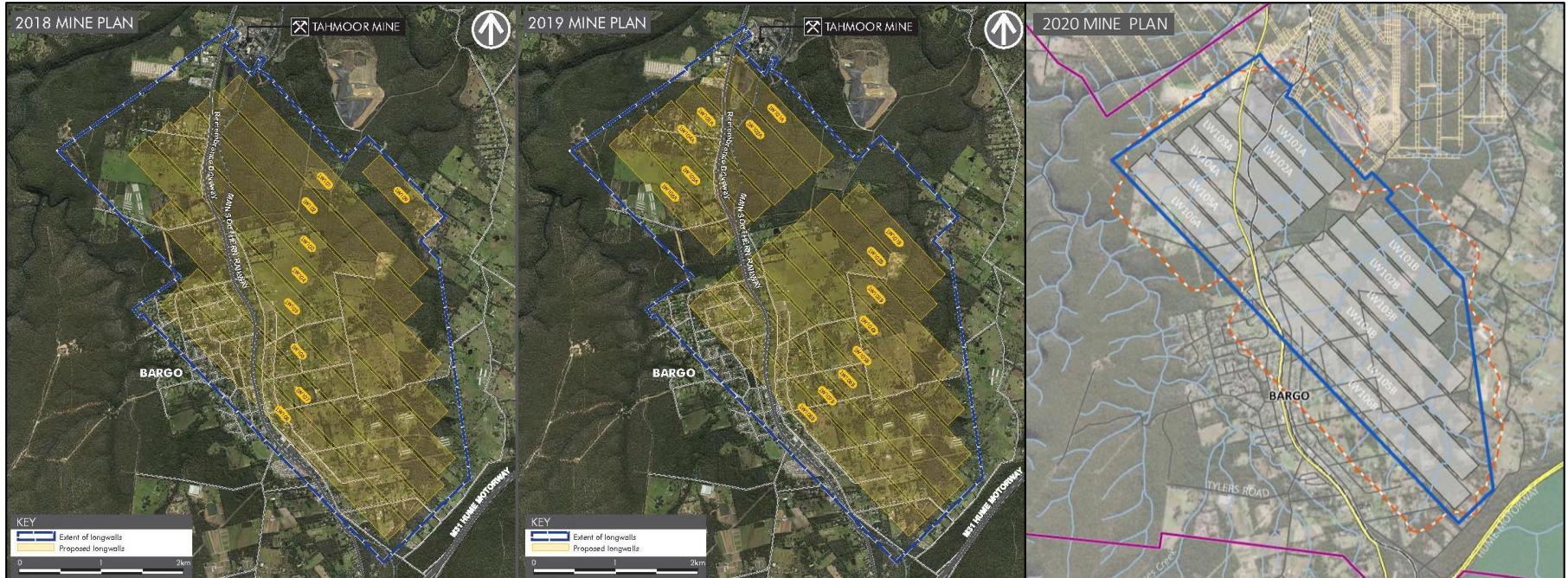
# Mine design evolution



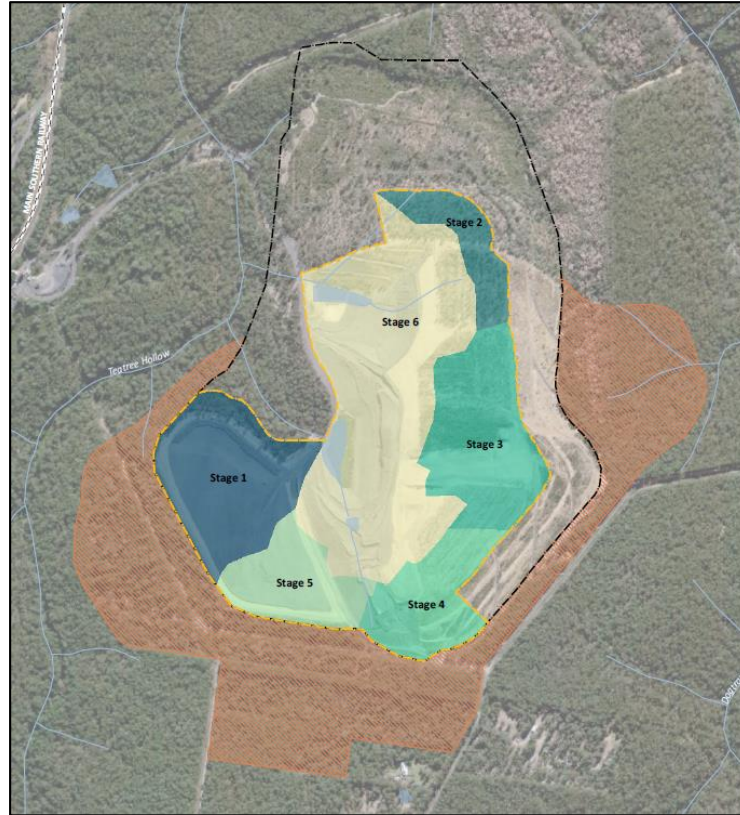
EIS

First amendment

Second amendment



# Refuse Emplacement Area (REA)



# Regional context

- Bargo was declared a Mine Subsidence District in 1975.
- More than 80% of properties in the district have been built since that time.
- Wollondilly Shire Council's *Local Strategic Planning Statement – Wollondilly 2040 (LSPS)* focuses on the Wilton Growth Area as a higher priority growth area in the next 20 to 30 years.
- Mining associated with the Project is forecast to conclude by 2032.





# Subsidence experience



- Tahmoor mine has been operating for over 40 years.
- Extensive community engagement takes place prior to mining.
- We have gained extensive experience in managing the built and natural environment in which we operate.
- We have developed innovative technologies and techniques to manage the effects of subsidence.



# Subsidence claims management



- Free 'pre-mining inspection' is available to property owners.
- Monitoring is setup and surveys undertaken before, during and after mining.
- If there are impacts, a claim is lodged through the independent government agency (Subsidence Advisory NSW), who manage the process.
- Subsidence legislation changed in 2018.
- Changes were designed to make the process fairer, faster and more community responsive.
- The vast majority of claims for Tahmoor North were wholly managed under the previous legislation.
- All claims for Tahmoor South will be managed using the new legislation which is a much improved process with strictly enforced timeframes.



# Rail subsidence management

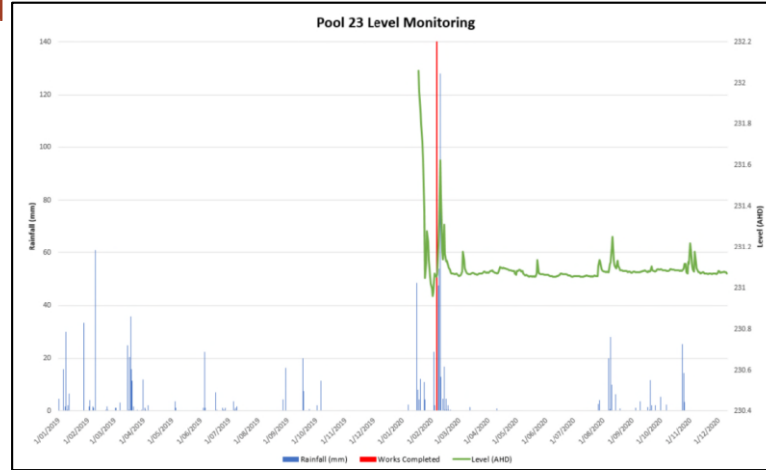


- Successfully managed mining directly beneath the Main Southern Railway that runs from Sydney to Melbourne.
- An innovative solution was created for rail tracks.
- Tahmoor mine pioneered the development and use of track expansion switches that move in and out to reduce stress on the track.
- Real time electronic monitoring is undertaken with alarm points.
- Award winning technology.
- The Main Southern Railway remained safe and serviceable at all times during mining.



# Creek remediation

- It is recognised that mining beneath streams may result in fracturing, causing surface flow diversion, primarily via pools.
- Acknowledge impacts to Redbank and Myrtle Creeks.
- No surface to seam connectivity, no net loss of water.
- Process developed in consultation with, and approved by the Resources Regulator.
- Successfully implemented in Tahmoor North.
- Proven practice will be implemented in Tahmoor South, if required.



# Thirlmere Lakes

- The University of NSW Water Research Laboratory has undertaken significant research into water levels at Thirlmere Lakes.



## Finding 1: The lakes are controlled by the climate



Thirlmere Lakes are sensitive to the climate, especially the rainfall and evaporation. Over the past 4 years, the evaporation has been much greater than the rainfall. When this happens, the lakes lose water slowly and eventually dry out. Current evidence does not show that the lake water levels are influenced by changes in the deep groundwater table (or nearby longwall mines).

# Additional project commitments



- A new reverse osmosis (RO) water treatment plant will be installed to further treat the water that is discharged offsite to ANZECC guidelines.
- Significant noise mitigation measures to be implemented.
- Actively capture methane to use in power generation on site or flared to reduce our Scope 1 emissions.





# Our Community



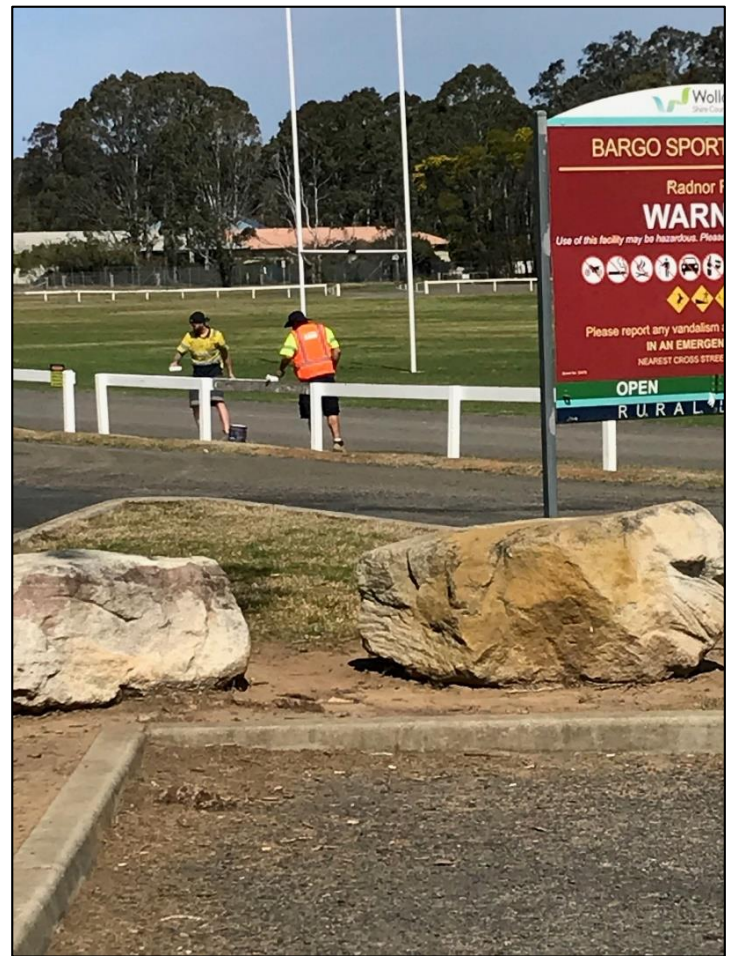


# Our Community





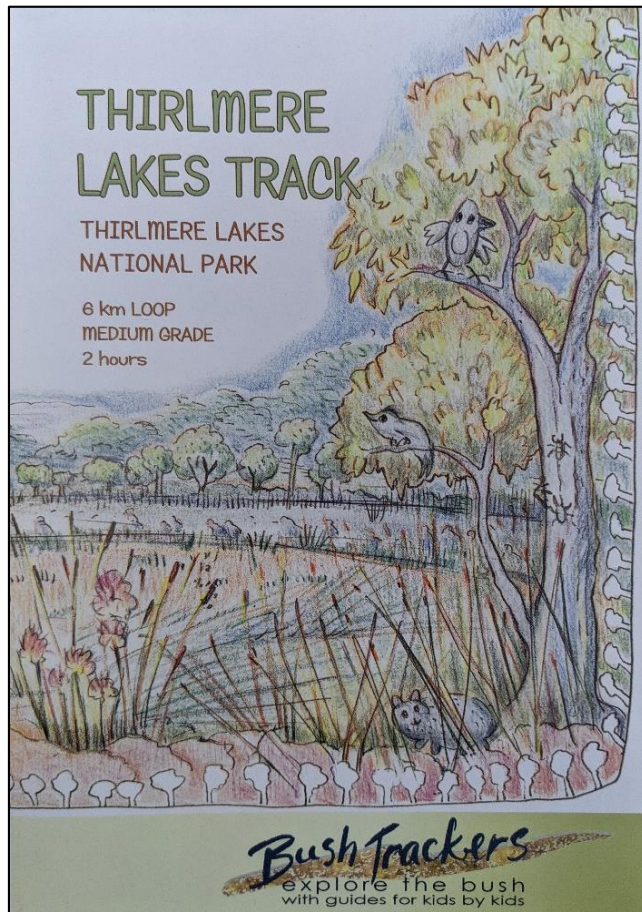




















**FREE!**

**FROM THE BUSH  
TO THE Beach**



*the 2021 Wollondilly*  
**BEACH BUS**

**2 BUS ROUTES IN 2021!**

Coming to you on:  
Monday 4, 11, 18 and 25 January

---

**The Beach Bus is a hop on, hop off bus service for all ages running on four days in January.**

The bus service will operate over two routes covering Bargo to Wollongong North Beach and Warragamba to Wollongong North Beach so there is a stop close to you!

The Beach Bus will run in accordance with current COVID-19 restrictions - you will be required to sign in and sanitise your hands as you enter the bus both morning and afternoon.

If you have been feeling unwell or been to a local hotspot we ask that you do not travel to ensure the safety of all in the community.

For more info contact Council on **4677 1100** or [youth@wollondilly.nsw.gov.au](mailto:youth@wollondilly.nsw.gov.au)

*Please note that these are unsupervised buses.  
There will be no supervision at any of the venues.*

**BUS ONE**

	DEPARTS	ARRIVES BACK
Bargo	8.25am	3.45pm
Tahmoor	8.35am	3.35pm
Thirlmere	8.40am	3.30pm
Picton- Redbank	8.45am	3.25pm
Picton- Shire Hall	8.50am	3.20pm
Wilton	9.00am	3.10pm
	ARRIVES	DEPARTS*
<b>Wollongong North Beach</b>	9.45am	2:25pm

**BUS TWO**

	DEPARTS	ARRIVES BACK
Warragamba	7.30am	4.40pm
The Oaks	7.55am	4.15pm
Oakdale	8.05am	4.10pm
Douglas Park	8.45am	3.25pm
	ARRIVES	DEPARTS*
<b>Wollongong North Beach</b>	9.45am	2:25pm

If you miss the 2:25pm pick up you must find your own way home.  
If leaving from Appin, please call 4677 1100 to find out more.  
PLEASE NOTE THAT THESE ARE UNSUPERVISED BUSES.  
THERE WILL BE NO SUPERVISION AT ANY OF THE VENUES.

---



Proudly sponsored by














← Wollondilly Life 🔍 ⋮

It is with great pleasure we announce that SIMEC Mining/Tahmoor Coal P/L has approved a request for a CIP Grant of \$10,000. We thank Amanda from SIMEC for her help & also Wollondilly Shire Council for allocating \$10,000 flood relief funds.

The jumps were badly damaged in Jan/Feb 2019 weather events & were deemed unrepairable by hand. We are very relieved that WSC have offered to fund the rest of this project to a total of \$37,000. We appreciate Councils support for the youth and our community.

We can't wait to start this rebuild & get our events happening again which in turn attracts visitation to our Shire 🤗🤗🤗🤗





# Closing

- Tahmoor South will enable:
  - Continuation of a brownfield underground mine and ongoing employment of the workforce of around 400 people for another 10 years;
  - The continued supply of high-quality coking coal for steelmaking to both the domestic and export markets, using existing infrastructure;
  - Significant benefits to the state of NSW and the local region, with a net benefit of \$664.9 M and \$137.5 M respectively (in NPV terms);
  - A vital contribution to the GFG Alliance Carbon Neutral 30 commitment; and
  - Continuation of the significant contribution that our business makes to the local communities within the Wollondilly Shire.





SIMEC

THANK YOU

MEMBER OF

