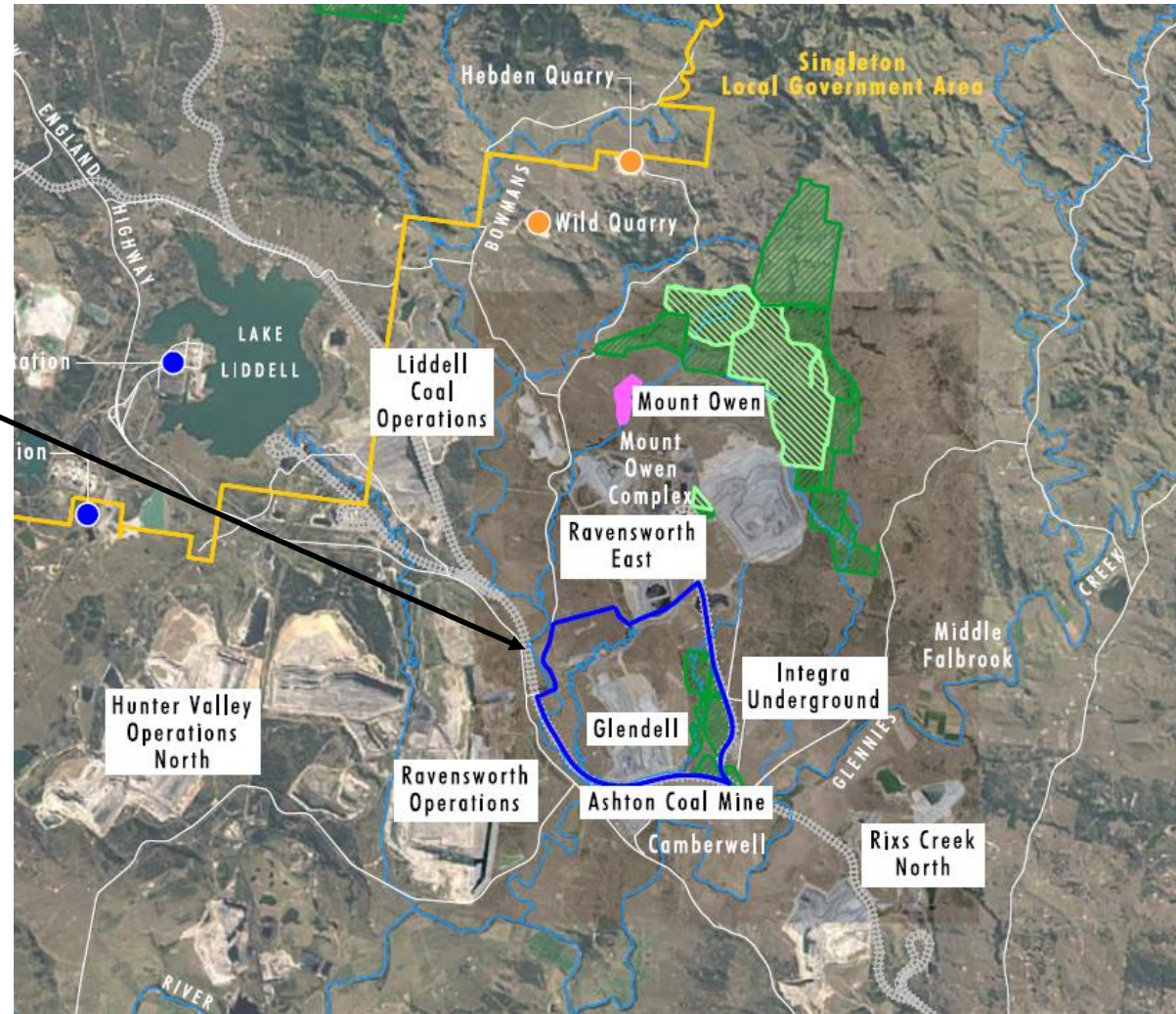


Glendell Coal Mine Modification 4

IPC Public Meeting
6th February 2020

Mt Owen Glendell Operations (Glendell)

Glendell is part of Mount Owen Glendell Operations (Complex) which consists of Glendell, Ravensworth East and Mt Owen.



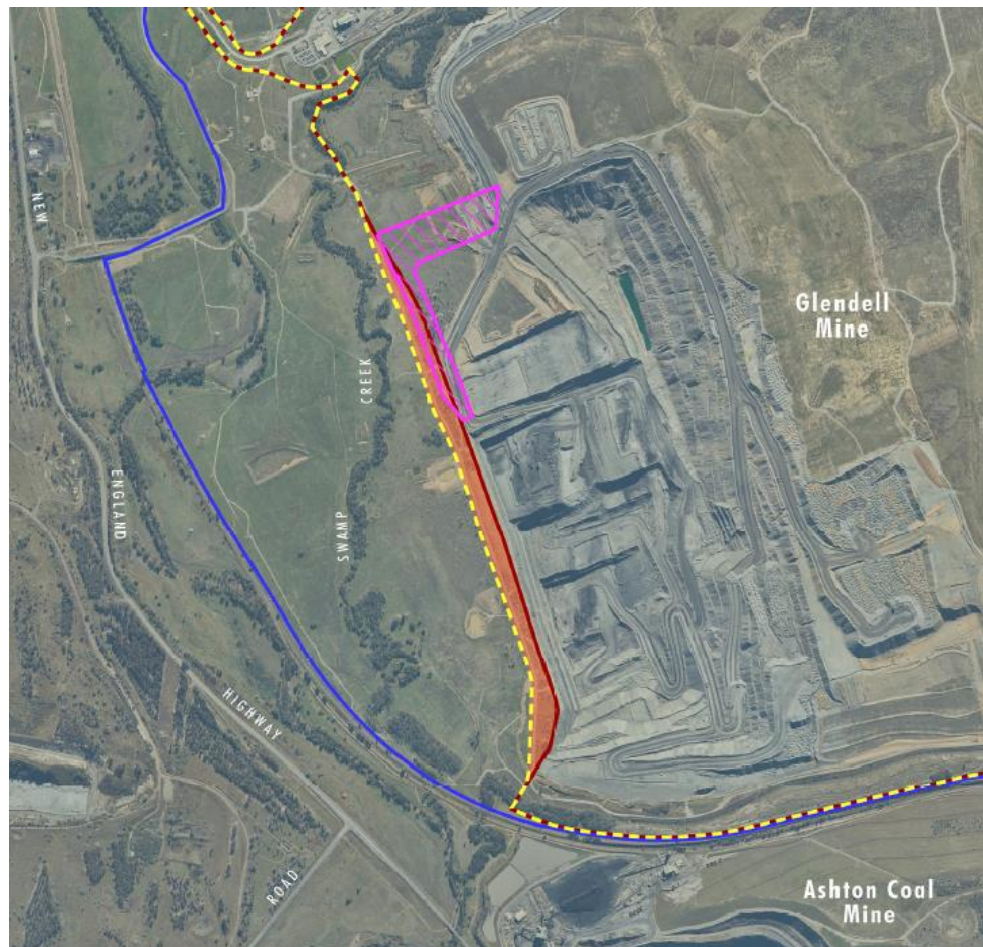
Current Operations

Glendell Open cut mine has been operating since 2008 under DA 80/952 (as modified)



Modification 4

- Modification 4 is a minor modification to the existing DA that continues current operation
- Accessing approximately an additional 1.97Mt of ROM coal
- Improving operational efficiency through shorter haulage



Modification 4

Under this proposed modification there is no change to:

- current approved mine life (the mine does not extend beyond June 2024 as per current approval)
- Project area (within currently approved area)
- current mining methods
- production rates
- processing rates
- operational hours
- workforce numbers



Modification 4

As a result, under this proposed modification there is no change to existing criteria for -

- air quality
- noise at receivers

To note is the operation is moving away from receivers (such as Camberwell).

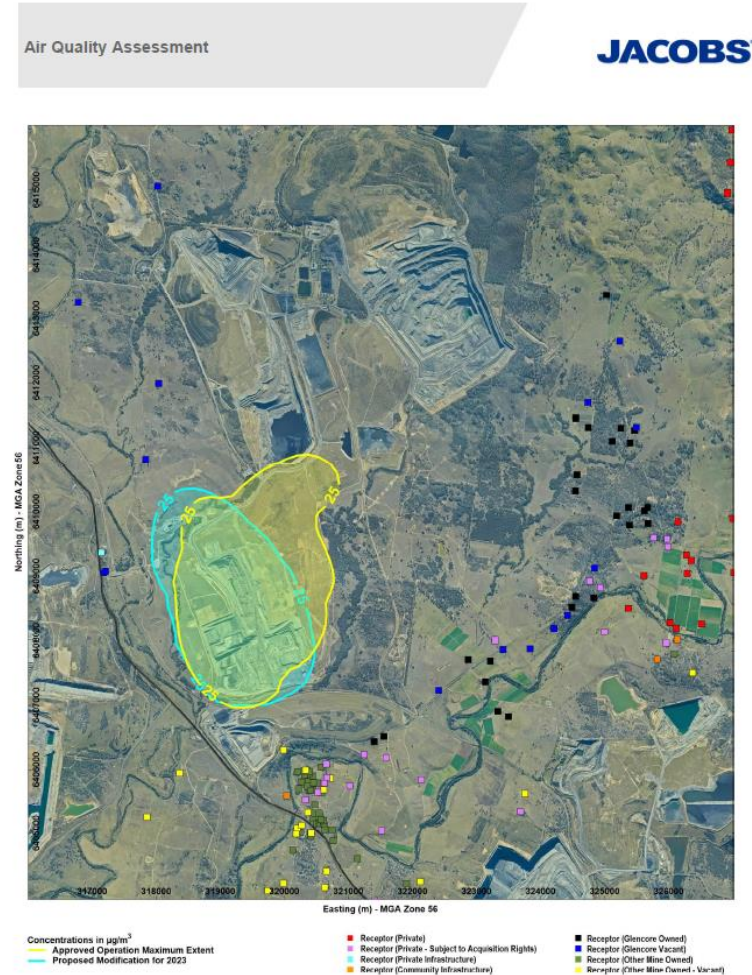
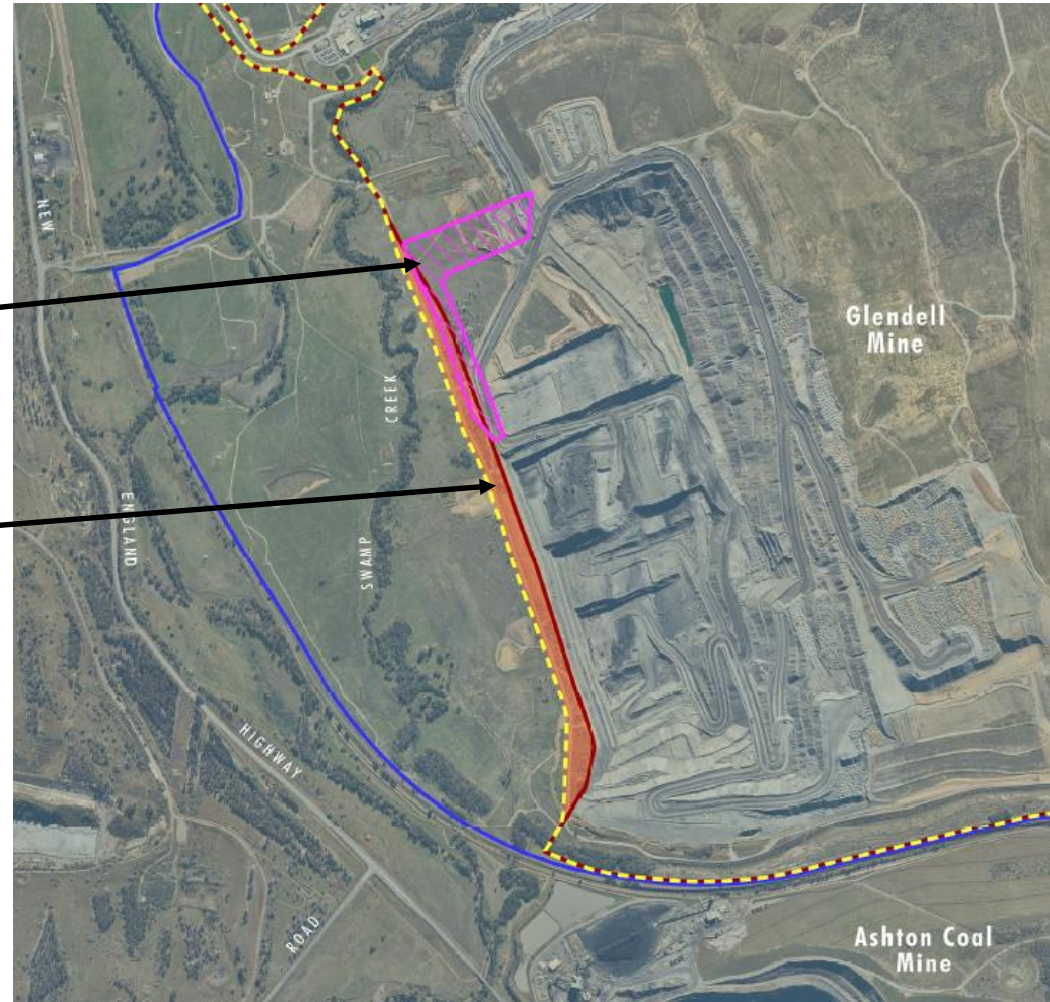


Figure 8 Predicted annual average PM_{10} concentrations due to Glendell Mine

Modification 4 – what does change ?

What does change –

- Mining of an additional 1.97Mt of ROM coal within current project boundary
- Provision of a more direct haul route via a new western haul road



Disturbance

Approximately 7.3 ha of regenerated Bull Oak woodland and derived native grassland will be cleared.



Acquisition Rights Update – Camberwell Village

- 0 additional receivers (private) in Camberwell afforded acquisition rights as per this proposed modification.
- However, all properties in Camberwell now have acquisition rights under either Ashton South-east Open Cut, Rix’s Creek South, Rix’s Creek North or Mt Owen Mod 2.



Image Source: Glencore (Jul 2019)
Data Source: Glencore (2019)

Legend
■ Private (Acquisition Rights)

Modification 4 – the benefits

Continued employment of more than 300 people –

\$34 Million paid in wages and salaries annually

more than \$157 Million of goods and services of which more than \$87 Million within Hunter LGAs

Note: 2018 figures for Glendell



Glendell Coal Mine – Mod 4

In summary:

- MOD 4 represents an 8 months of continued operations for the existing Glendell Mine.
- MOD 4 represents no change to our currently approved operating parameters.
- Will provide further employment and economic benefit to the local community.

