

## MIXED USE DEVELOPMENT

1-17 GREY ST SILVERWATER  
 GROUND FLOOR  
 SCALE 1:500 @ A4  
 JULY 2019

### SITE YIELD

RETAIL - 0.25:1  
 RESIDENTIAL - 1.35:1  
 B6 - 1.1:1

2126m<sup>2</sup> - B6 PERMISSIBLE USES SUCH AS BUSINESS PREMISES, OFFICE PREMISES, HIGH TECHNOLOGY INDUSTRIES, SPECIALISED RETAIL PREMISES, HEALTH SERVICES FACILITIES, FOOD & DRINK PREMISES  
 1864m<sup>2</sup> - RETAIL





# MIXED USE DEVELOPMENT

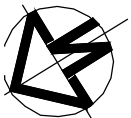
1-17 GREY ST SILVERWATER

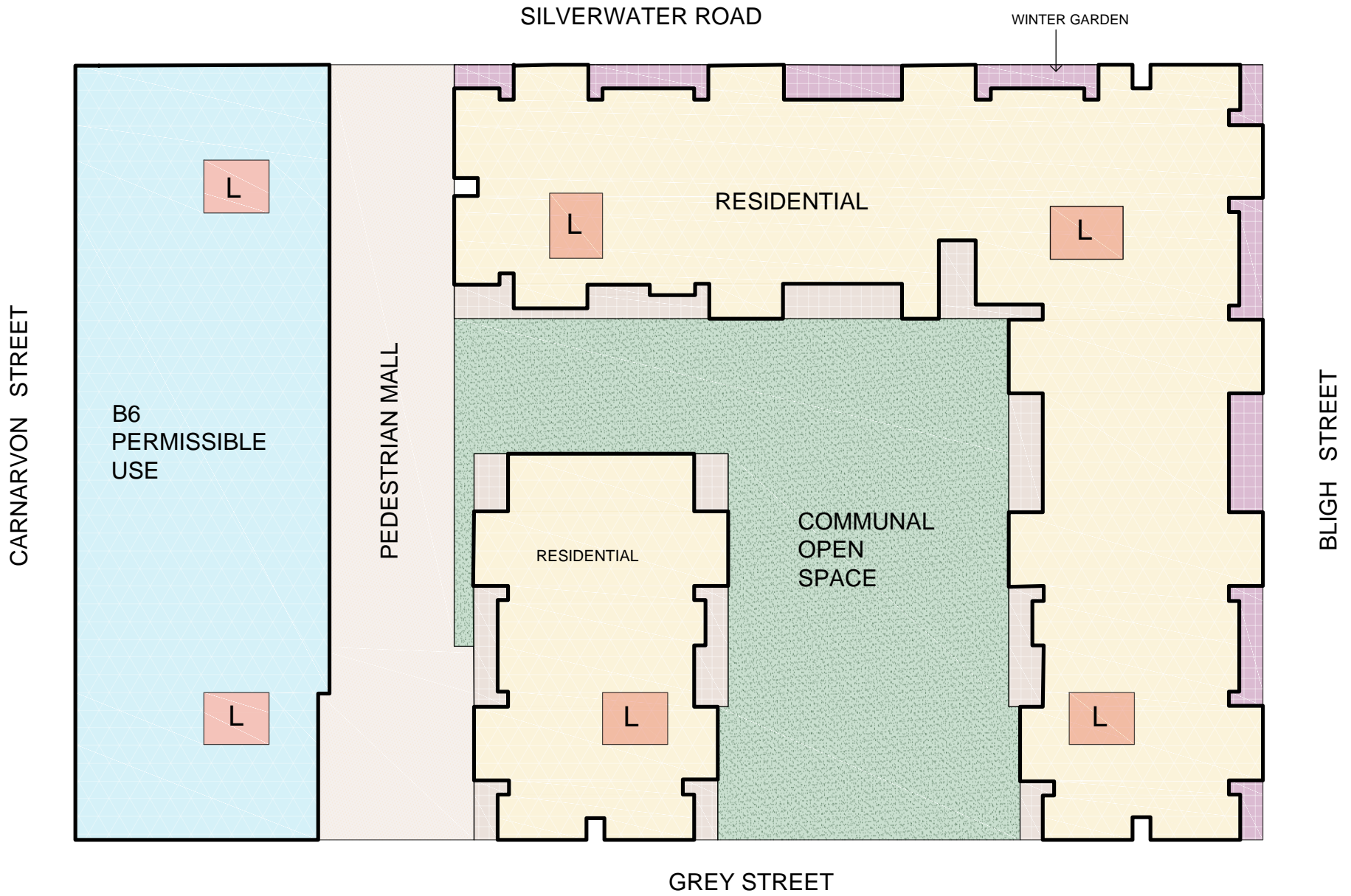
LEVEL 1

SCALE 1:500 @ A4

JULY 2019

- 1630m<sup>2</sup> - B6 PERMISSIBLE USES SUCH AS BUSINESS PREMISES, OFFICE PREMISES, HIGH TECHNOLOGY INDUSTRIES, HEALTH SERVICES FACILITIES, CENTRE- BASED CHILDCARE FACILITY
- 1666m<sup>2</sup> - RESIDENTIAL

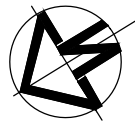


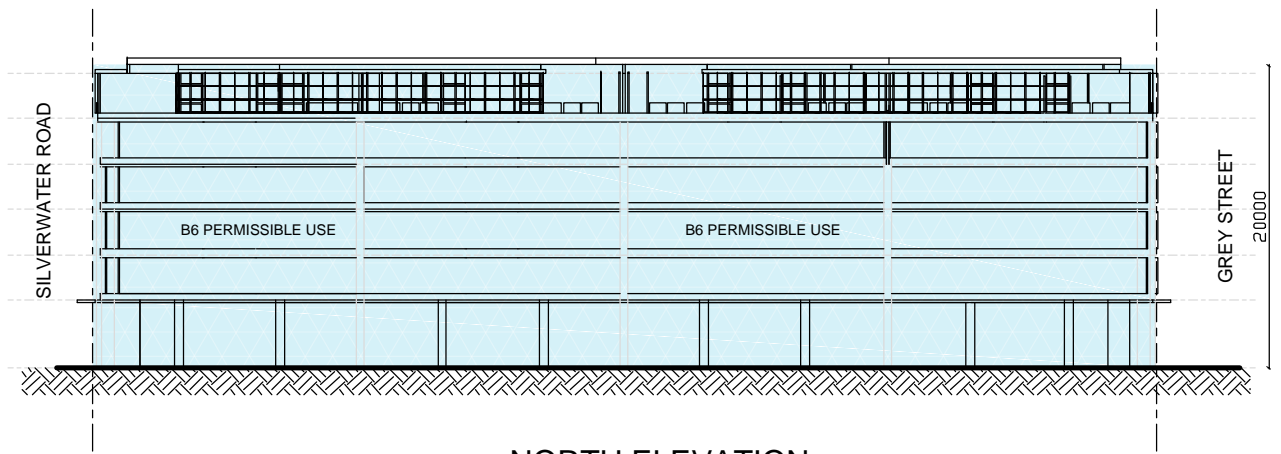


# MIXED USE DEVELOPMENT

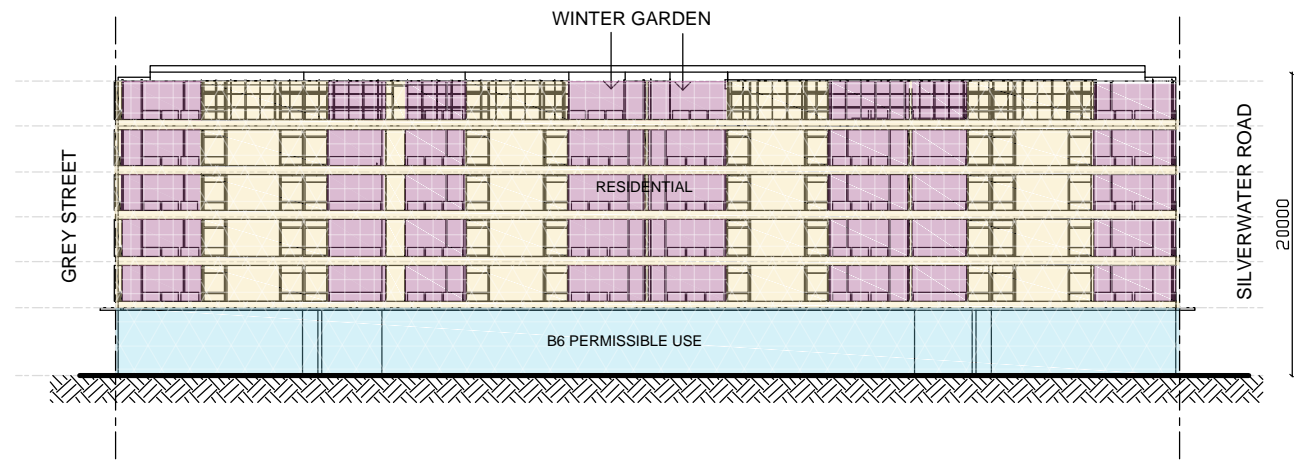
1-17 GREY ST SILVERWATER  
 TYPICAL FLOOR PLAN  
 SCALE 1:500 @ A4  
 JULY 2019

- 1140m<sup>2</sup> - B6 PERMISSIBLE USES SUCH AS BUSINESS PREMISES, OFFICE PREMISES, HIGH TECHNOLOGY INDUSTRIES, HEALTH SERVICES FACILITIES
- 2135m<sup>2</sup> - RESIDENTIAL





NORTH ELEVATION  
(CARNARVON STREET)



SOUTH ELEVATION  
(BLIGH STREET)

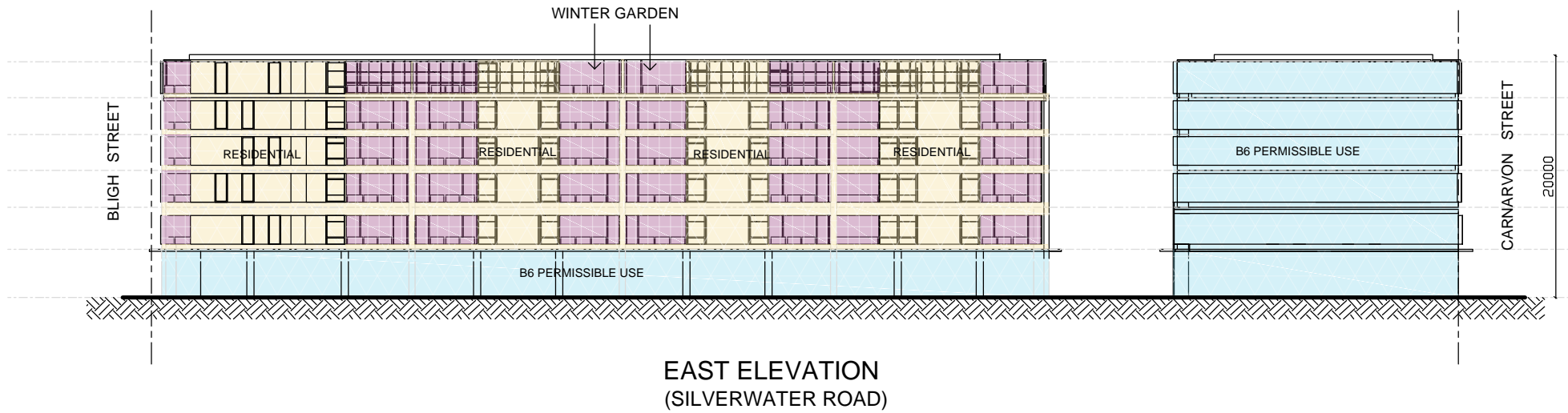
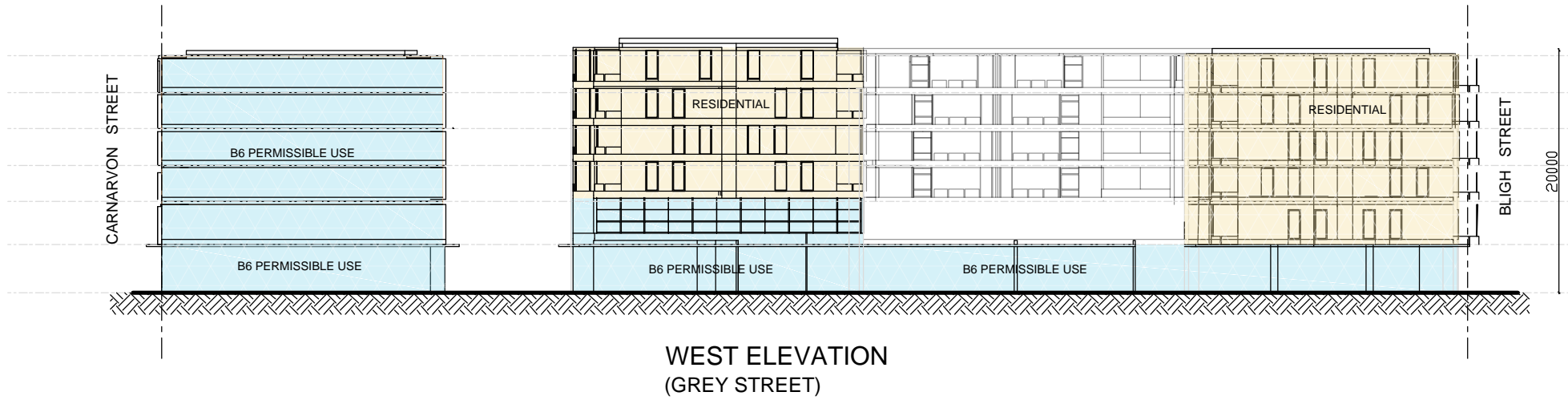
# MIXED USE DEVELOPMENT

1-17 GREY ST SILVERWATER

ELEVATIONS

SCALE 1:500 @ A4

JULY 2019



# MIXED USE DEVELOPMENT

1-17 GREY ST SILVERWATER

ELEVATIONS

SCALE 1:500 @ A4

JULY 2019



**PRINCES HIGHWAY, ARNCLIFFE**



**VICTORIA ROAD, DRUMMOYNE**



**PARRAMATTA ROAD, HOMEBUSH**