



14 June 2019

Brad James
Senior Planning Officer
Independent Planning Commission
Level 3, 201 Elizabeth Street
Sydney NSW 2000

Orange Grove Sun Farm – Speaker 4 Presentation

Dear Brad,

In review of the images that were submitted to the IPC as part of the presentation from Speaker 4, we would like to note that the image which has been labelled as "1998 flood – view from Carrol inclusive of solar site" has not been taken Carroll, nor does it contain any of the land which comprises the Orange Grove Sun Farm.

Whilst it is possible that this photograph was taken around the peak inundation level of the 1998 flood (270.1 m AHD (SMEC 2003)), this photograph looks to have been taken from a location which is west of Receptor R8, facing away from the Orange Grove Sun Farm in a westerly direction.

Attached to this letter are two maps which depict this photographs field of view and its approximate location in relation to the Orange Grove Sun Farm.

Please let me know if you or the members of the Commission have any questions.

Best regards

A handwritten signature in black ink, appearing to read "Jason Gibson", with a long horizontal line extending to the right.

Jason Gibson
Senior Development Manager
OVERLAND Sun Farming Pty Ltd

ORANGE GROVE SUN FARM PTY LTD

23 MILTON PARADE
MALVERN, VICTORIA 3144

Orange Grove Sun Farm

Development Footprint

Project Site

Features

Approximate Camera View

Local Structure

Local Foliage

Town of Carroll

NOTES:

1. ANY DIMENSIONS ARE INDICATIVE AND IN "METRES" UNLESS OTHERWISE STATED

2. NOT FOR CONSTRUCTION

3. SUBJECT TO CHANGE DURING DETAILED DESIGN

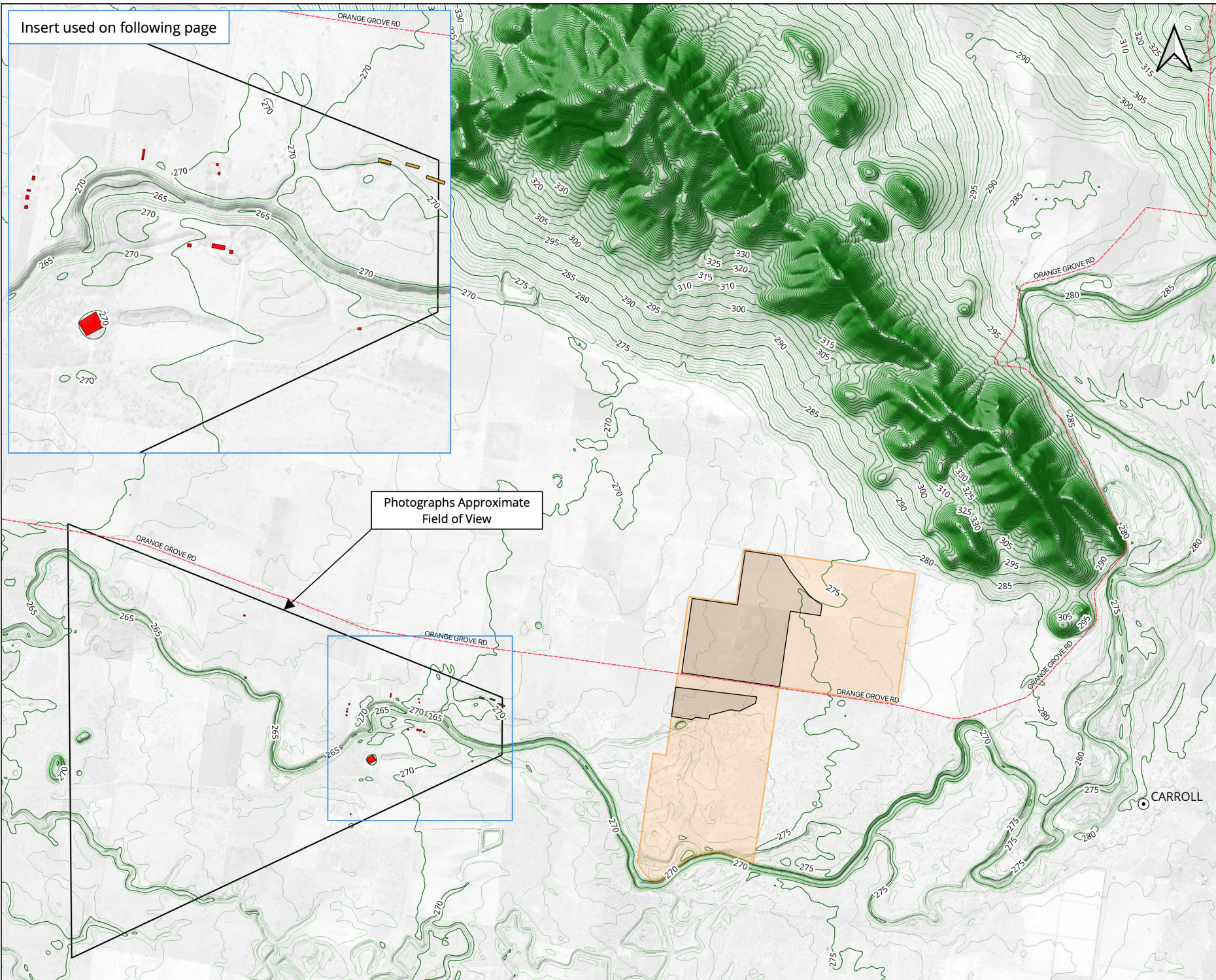
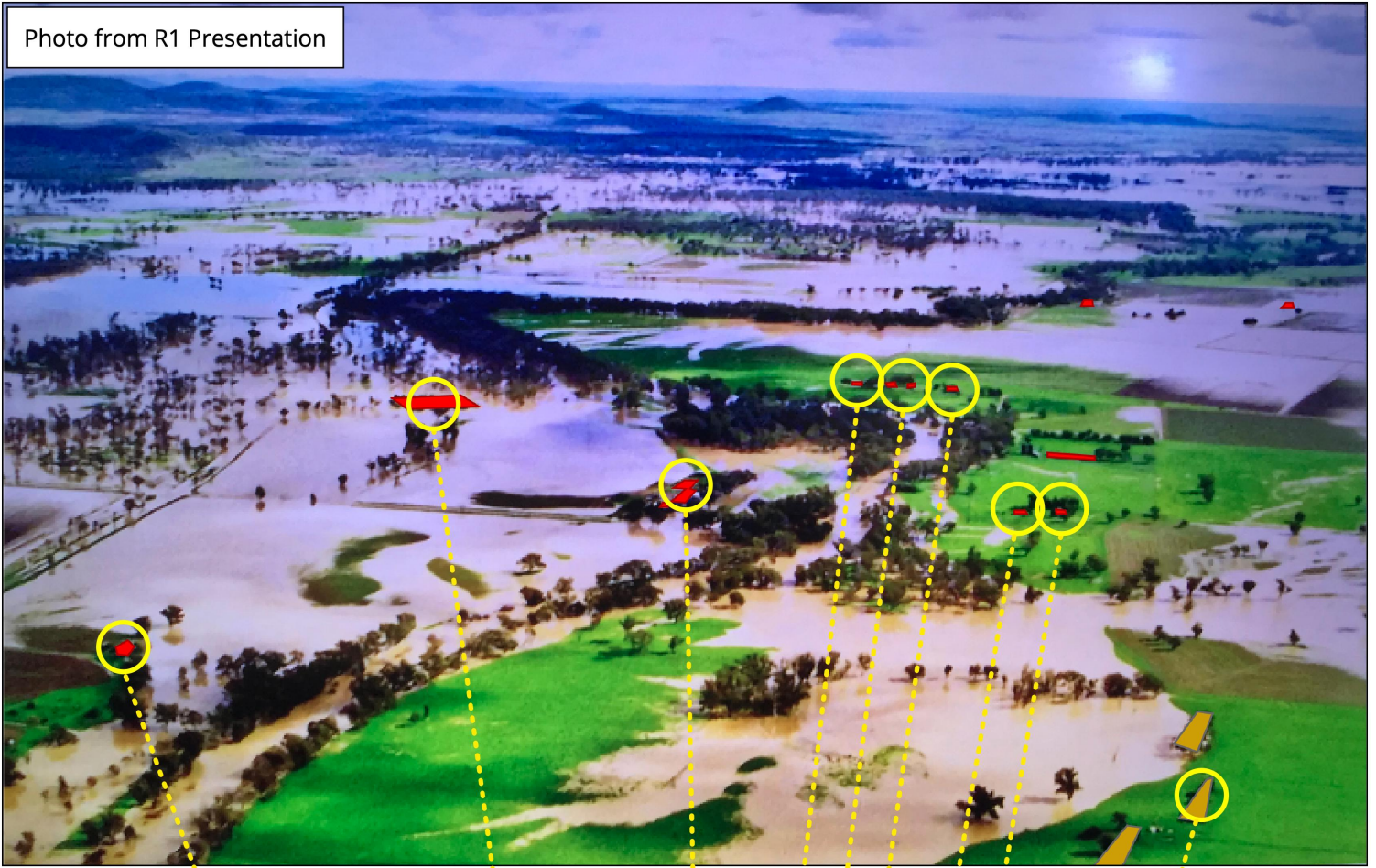


Photo from R1 Presentation



Insert from Overview Map

