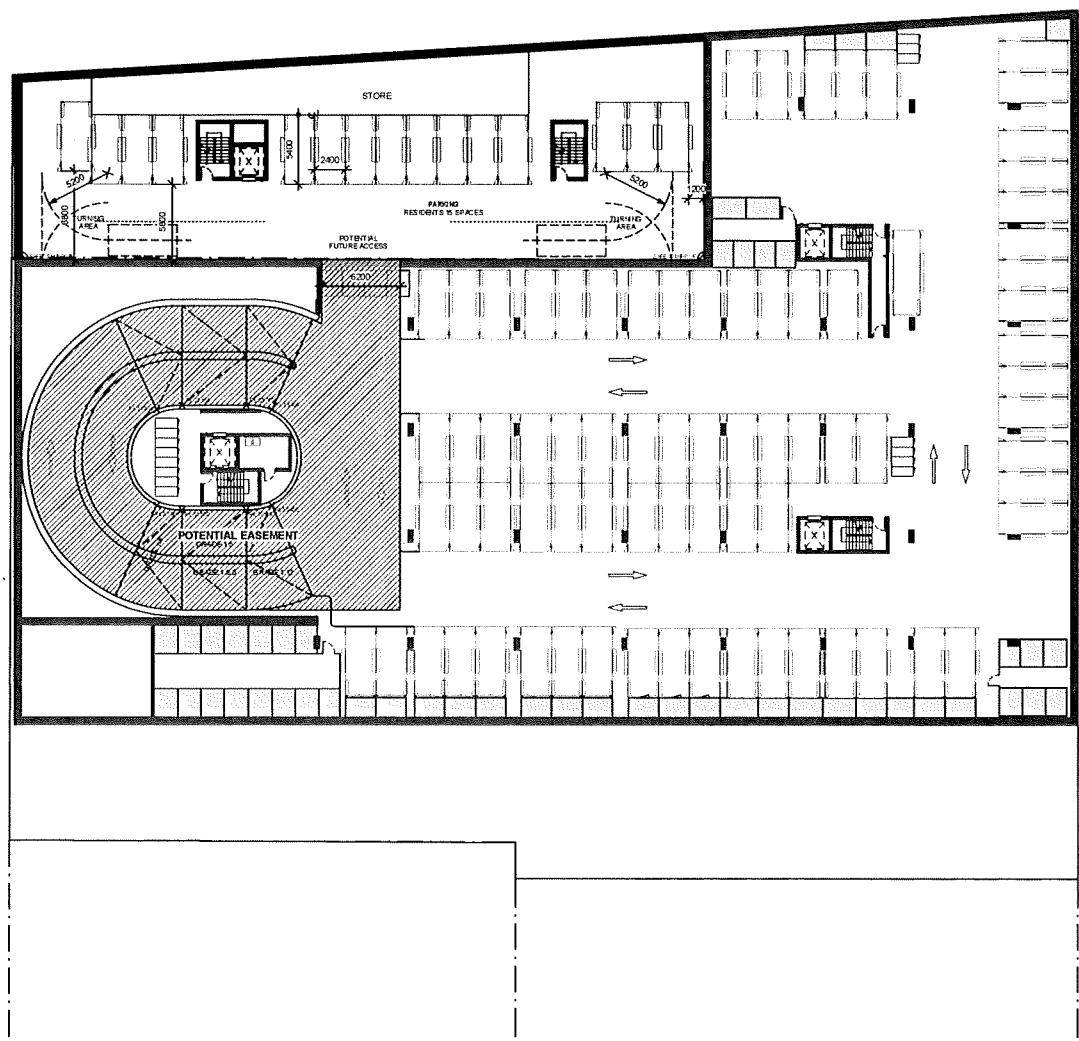


3



issue	amendment	date	log no
A	DEVELOPMENT APPLICATION	27.11.15	



HOLT POINT PTY LTD
c/o STATEWIDE PLANNING

stanisic architects

Level 2/20 Lygon St, Melbourne, Vic 3045 (ph) 9439 2010
T 01 54 93 1188
www.stanisic.com.au ABN 11 929 33 461

INDICATIVE DEVELOPMENT
CONCEPT – ADJOINING LAND: SITE B

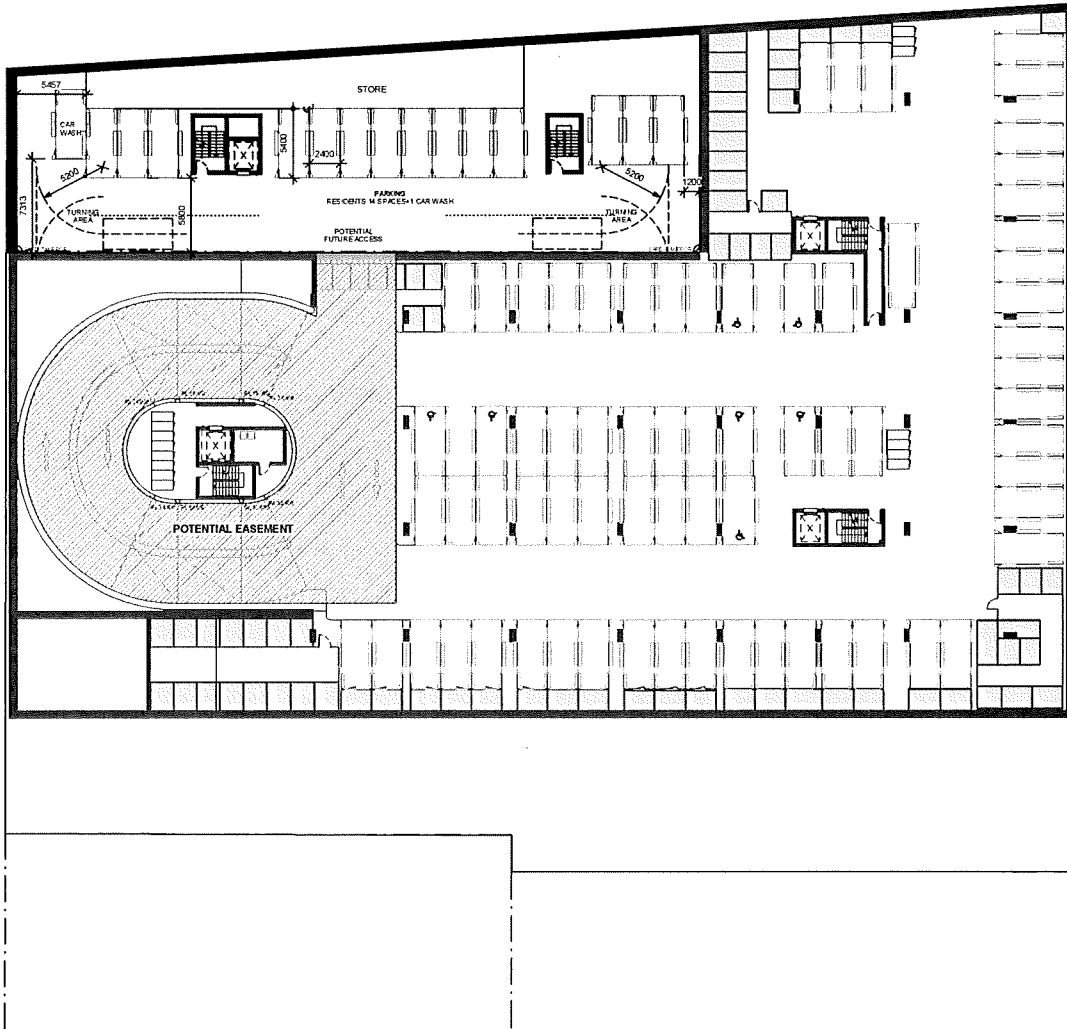
MIXED USE DEVELOPMENT CONCEPT
658-668 CANTERBURY ROAD,
BELMORE (SITE B)

BASEMENT 03 PLAN

drawn	checked	scale	issue
Aut/PT		1:200@A1	A
project no	15.002	drawings	C 901

do not scale from drawings
consult architect's office for details (reg no 4463)

the layout shown and the areas noted on this drawing are indicative only. layouts are to be read in conjunction with floor plans, elevations & sections.



INDICATIVE DEVELOPMENT
CONCEPT – ADJOINING LAND: SITE B

issue	amendment	date	reason
A	DEVELOPMENT APPLICATION	27.11.12	



HOLT POINT PTY LTD
c/o STATEWIDE PLANNING

stanisic architects

Level 22 @ Liverpool Street Brisbane QLD 4000
T 61 7 325 1218
www.stanisic.com.au ABN 11 002 52 48 1

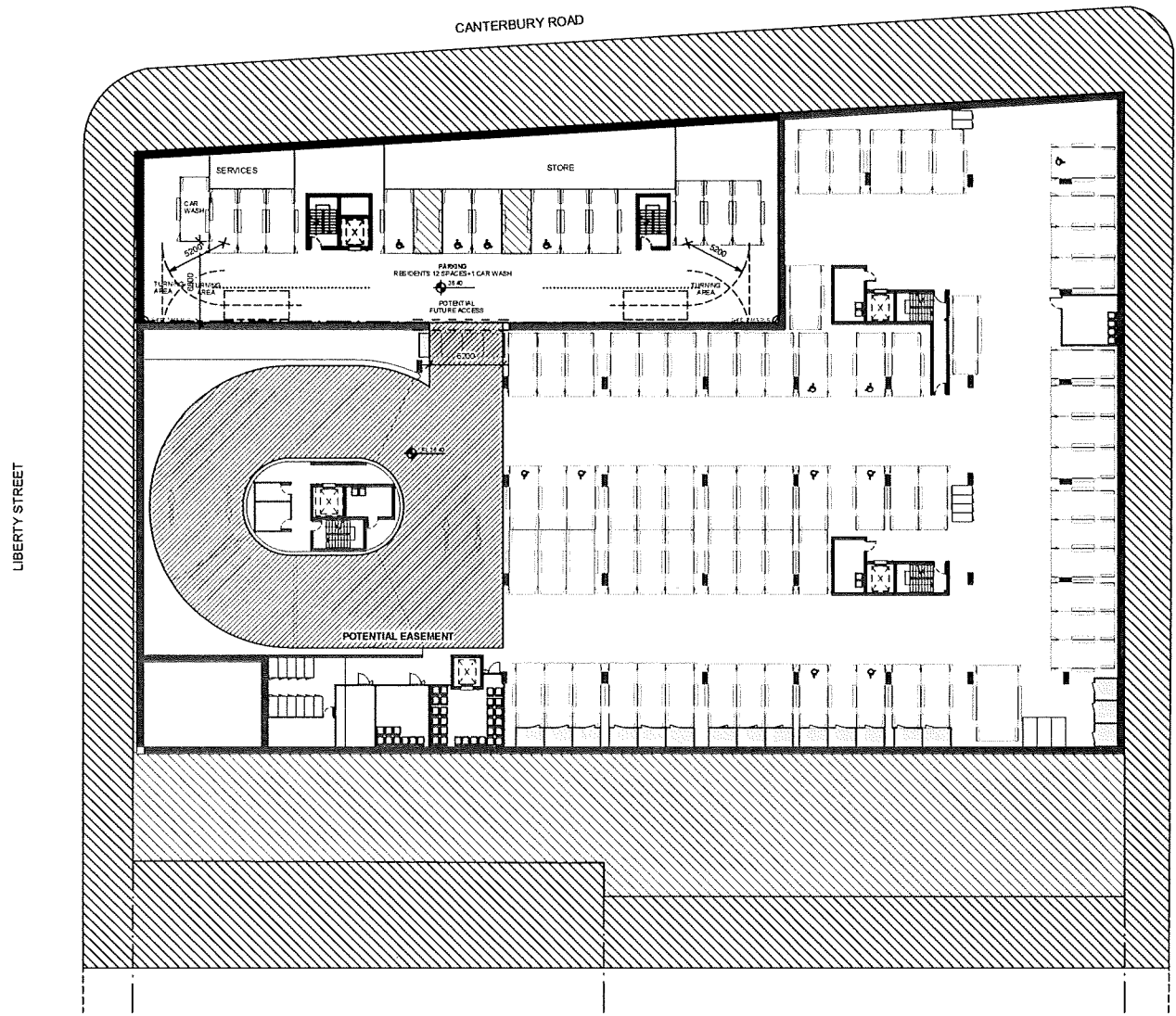
MIXED USE DEVELOPMENT CONCEPT
656 668 CANTERBURY ROAD,
BELMORE (SITE B)
BASEMENT 02 PLAN

checked: Checker
scale: 1:200 @ A1
date: 15/02/13
drawn: Author
project no: 09447/03
sheet no: 09447/03

A
C 902

do not scale from drawings.
consult architect's office (reg no 4482)

the layout shown and the areas noted on this drawing are indicative only. layouts are to be read in conjunction with floor plans, elevations & sections.



MIX SCHEDULE

LEVEL	NO.	PERCENTAGE
1B	9	36%
2B	12	48%
3B	4	16%
TOTAL:	25	

PARKING SCHEDULE

LEVEL	NO.	DESCRIPTION
LG	15	(COMMERCIAL)
B1	12	(4 ACCESSIBLE: 1 COMMERCIAL, 3 RESIDENTIAL)+1 CAR WASH
B2	14	(RESIDENTIAL)+1 CAR WASH
B3	15	(RESIDENTIAL)
TOTAL:	58	

issue	amendment	date	by	project
A	DEVELOPMENT APPLICATION	27.11.13		

do not scale from drawings.
 combined architect bank stratis (reg no 4482)

the layout shown and the mass noted on this drawing are indicative only. layouts are to be noted in conjunction with floor plans, elevations & sections.



HOLT POINT PTY LTD
 c/o STATEWIDE PLANNING

stanisic architects

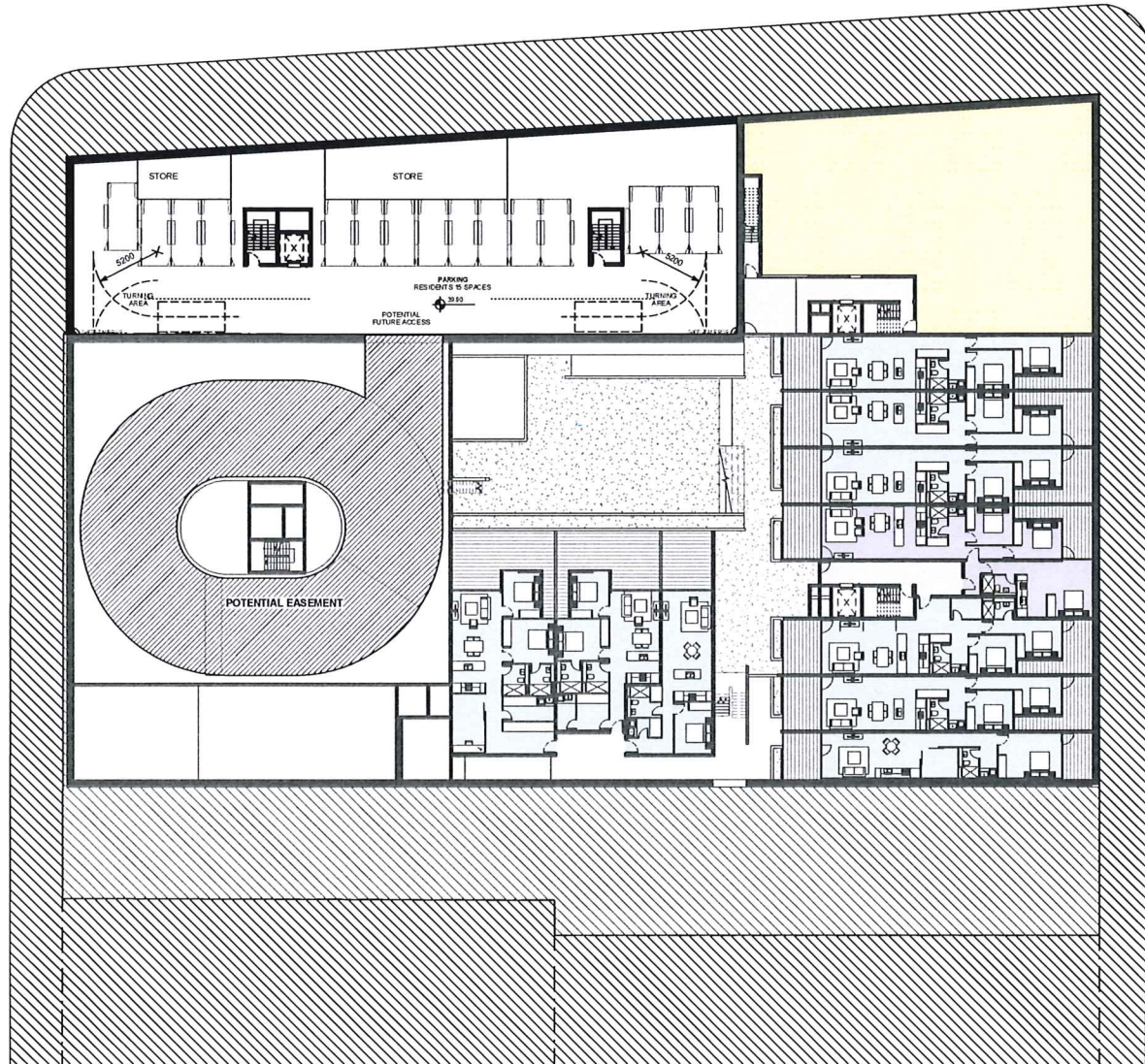
Level 22-01 Liverpool Street Brisbane QLD 4000
 T: 07 3251 2288
 www.stanisic.com.au ABN 11 028 53 461

INDICATIVE DEVELOPMENT
 CONCEPT – ADJOINING LAND: SITE B

MIXED USE DEVELOPMENT CONCEPT
 658-668 CANTERBURY ROAD,
 BELMORE (SITE B)
BASEMENT 01 PLAN

checked	checked	scale	1:200 @ A1	issue	A
drawn	Author	project no	15 002	drawn by	

C 903



INDICATIVE DEVELOPMENT
CONCEPT – ADJOINING LAND: SITE B

issue	amendment	date	log no
A	DEVELOPMENT APPLICATION	27.11.12	

do not scale from drawings.
consult architect Stanic Architects (reg no 4480)

the layout shown and the areas noted on this drawing are indicative only. layouts are to be read in conjunction with floor plans, elevations & sections.



HOLT POINT PTY LTD
c/o STATEWIDE PLANNING

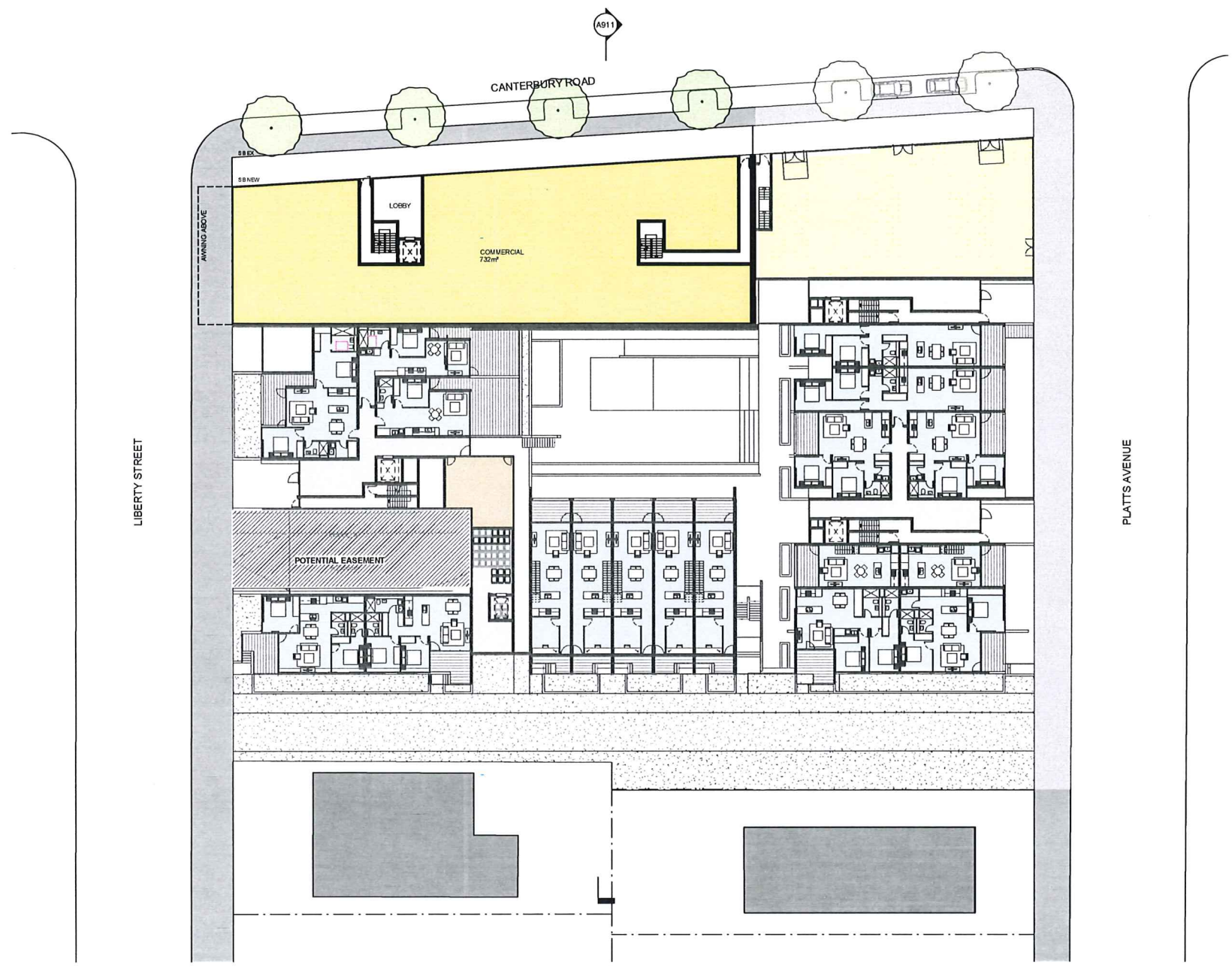
stanic architects

Level 2/240 Liverpool Street Melbourne VIC 3000
T: 03 9354 2388
www.stanic.com.au ABN 11300532461

MIXED USE DEVELOPMENT CONCEPT
658-668 CANTERBURY ROAD,
BELMORE (SITE B)
LOWER GROUND PLAN

checked	author	scale	project no	issue
	Author	1:200@A1	15002	A

C 904



INDICATIVE DEVELOPMENT
CONCEPT – ADJOINING LAND: SITE B

issue	amendment	date	legend
A	DEVELOPMENT APPLICATION	27.11.12	

do not scale from drawings
consult architect for details (reg no 4480)

the layout shown and the areas noted on this drawing are indicative only. layouts are to
be read in conjunction with floor plans, elevations & sections.



HOLT POINT PTY LTD
c/o STATEWIDE PLANNING

stanisic architects

Level 2/24 Liverpool Street Brisbane QLD 4000
T: 07 3 855 1338
www.stanisic.com.au A911/13/08/02/01

MIXED USE DEVELOPMENT CONCEPT
658-668 CANTERBURY ROAD,
BELMORE (SITE B)
GROUND / LEVEL 1 PLAN

checked	author	scale	project no	issue
AH	Author	1:200@A1	15 002	A

C 905

A911

CANTERBURY ROAD

LIBERTY STREET

PLATTS AVENUE



INDICATIVE DEVELOPMENT
CONCEPT – ADJOINING LAND: SITE B

MIXED USE DEVELOPMENT CONCEPT
658-668 CANTERBURY ROAD,
BELMORE (SITE B)
LEVEL 2 PLAN

issue	amendment	date	logon
A	DEVELOPMENT APPLICATION	27.11.12	



HOLT POINT PTY LTD
c/o STATEWIDE PLANNING

stanisic architects

Level 2 of 20 Upper Level Site B for Site B NSW 2012
1 of 25 000 2012
www.stanisic.com.au ADV 11/02/2012

checked	AH	scale	1:200@A1	issue	A
drawn	Author	project no	15 002	drawing no	

do not scale from drawings
consult architect Stanisic (p.p. no 4402)

The layout shown and the areas noted on this drawing are indicative only. Layouts are to be read in conjunction with floor plans, elevations & sections.

scale bar

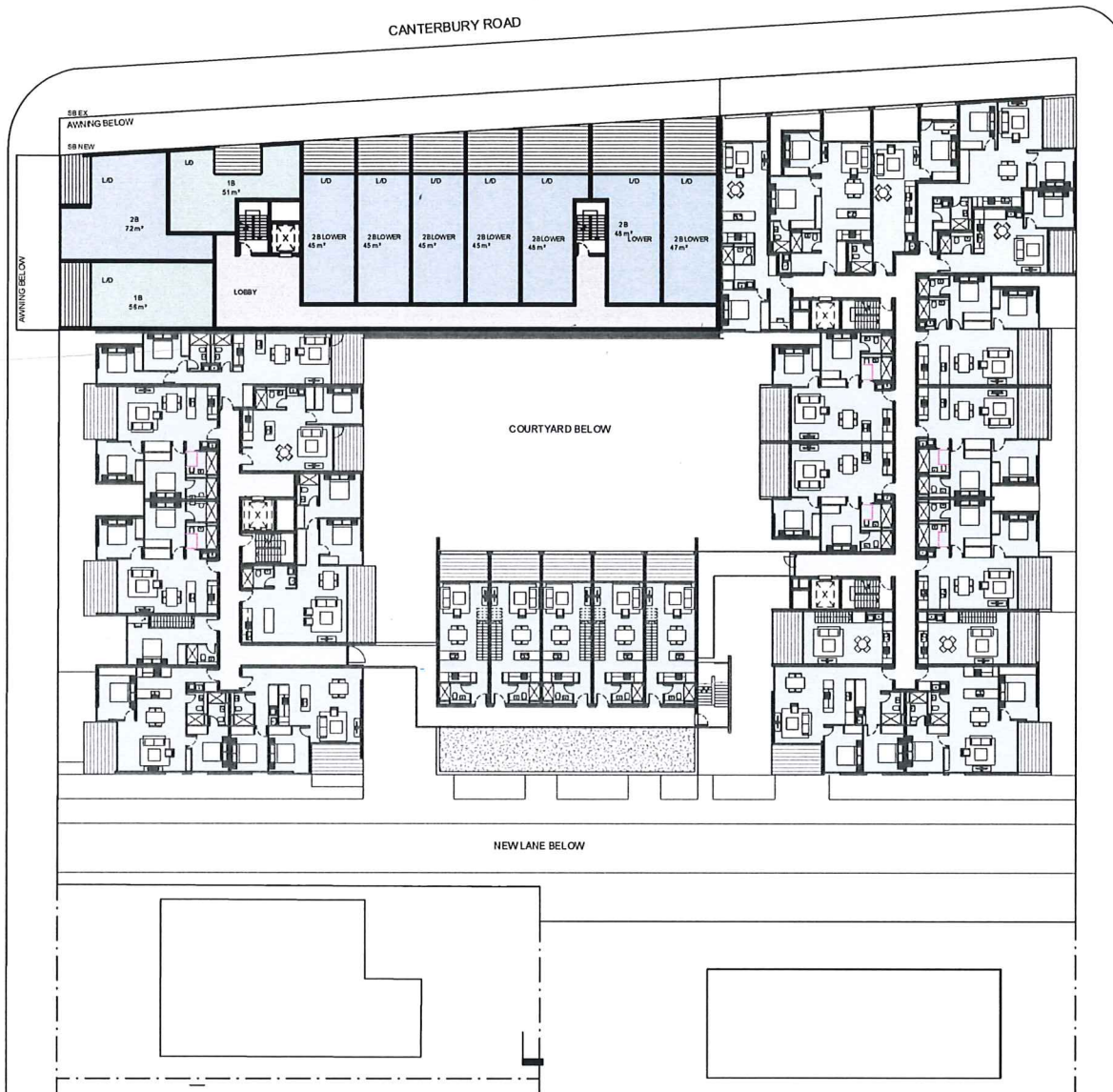
C 906

AG11

CANTERBURY ROAD

LIBERTY STREET

PLATTS AVENUE



INDICATIVE DEVELOPMENT
CONCEPT – ADJOINING LAND: SITE B

issue	amendment	date	reason
A	DEVELOPMENT APPLICATION	27.11.13	



HOLT POINT PTY LTD
c/o STATEWIDE PLANNING

stanisic architects

Level 2220 Liverpool Street, Suite 6015 Sydney NSW 2010
T +61 2 9394 2288
www.stanisic.com.au ABN 11205510411

propd
MIXED USE DEVELOPMENT CONCEPT
658-668 CANTERBURY ROAD,
BELMORE (SITE B)
drawing
LEVEL 3 PLAN

do not scale from drawings.
revised architect's work starts (reg no 4480)

the legs of shown and the areas noted on this drawing are indicative only. layouts are to
be read in conjunction with floor plans, elevations & sections.

scale bar

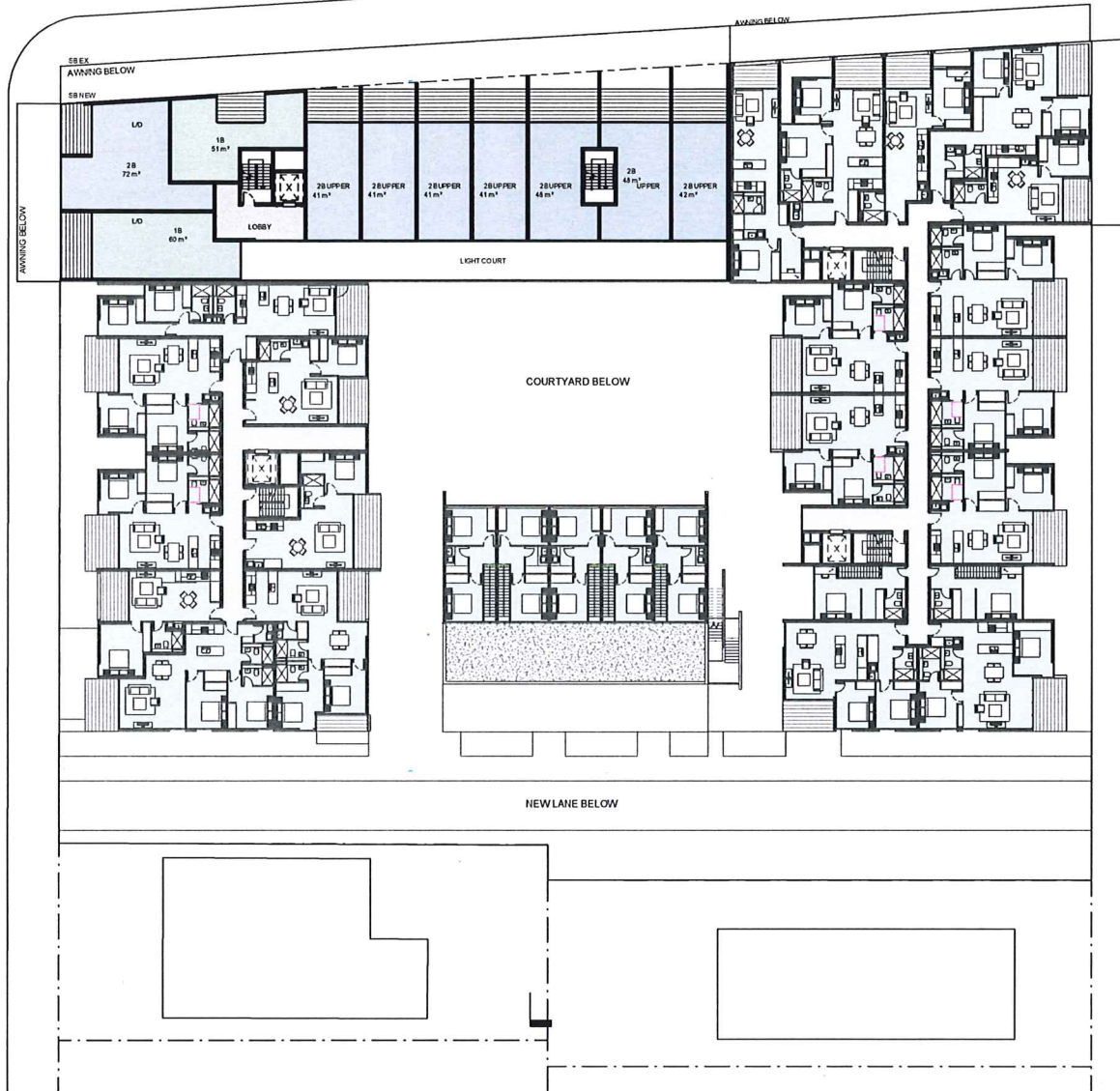
checked	AH	scale	1:200@A1	issue	A
drawn	Author	project no	15 002	drawing no	C 907

A911

CANTERBURY ROAD

LIBERTY STREET

PLATTS AVENUE



INDICATIVE DEVELOPMENT
CONCEPT – ADJOINING LAND: SITE B

MIXED USE DEVELOPMENT CONCEPT
658-668 CANTERBURY ROAD,
BELMORE (SITE B)
LEVEL 4 PLAN

issue	amendment	date	legend
A	DEVELOPMENT APPLICATION	27.11.12	

do not scale from drawings.
consult architect's particulars (fig no 480)

the layout shown and the areas noted on this drawing are indicative only. layouts are to be read in conjunction with floor plans, elevations & sections.



client
HOLT POINT PTY LTD
c/o STATEWIDE PLANNING

stanisic architects

Level 2220 Liverpool Street Suite 6015 Sydney NSW 2010
T 61 2 938 2388
www.stanisic.com.au ABN 1120033461

checked	scale	issue
AH	1:200@A1	A
drawn	project no	drawing no
Author	15.002	

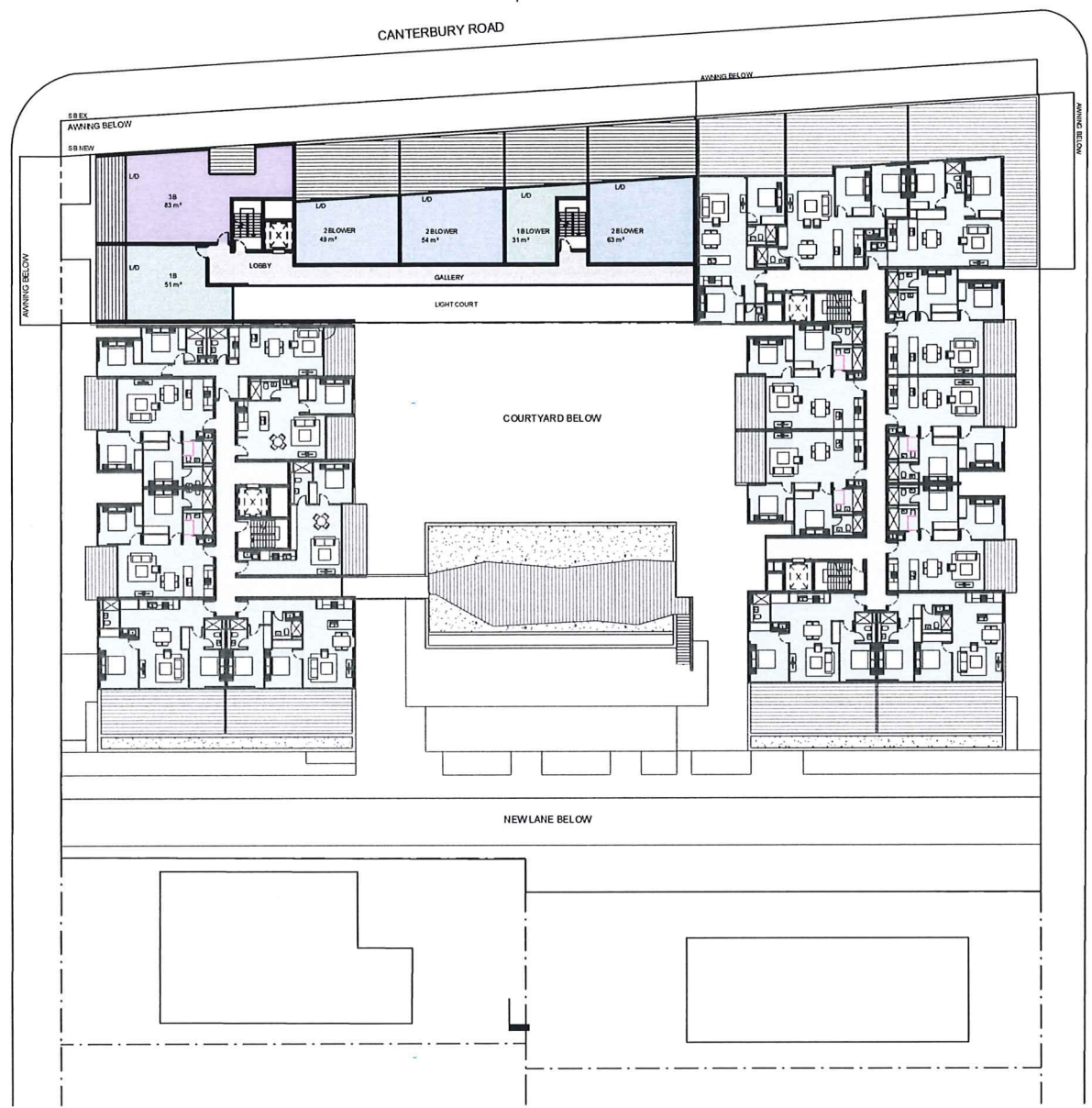
C 908



CANTERBURY ROAD

LIBERTY STREET

PLATTS AVENUE



INDICATIVE DEVELOPMENT
CONCEPT - ADJOINING LAND: SITE B

MIXED USE DEVELOPMENT CONCEPT
658-668 CANTERBURY ROAD,
BELMORE (SITE B)
LEVEL 5 PLAN

issue	amendment	date	legend
A	DEVELOPMENT APPLICATION	22.11.15	

do not scale from drawings
compiled & checked C. Park, stanisic [reg no. 4480]

the layout shown and the area noted on this drawing are indicative only. layouts are to be made in conjunction with floor plans, elevations & sections.



HOLT POINT PTY LTD
c/o STATEWIDE PLANNING

stanisic architects

Level 2/240 Liverpool Street Sydney NSW 2010
T 61 2 955 2288
www.stanisic.com.au AG11 1100203481

checked	AH	scale	1:200@A1	issue	A
drawn	Author	projection	15.002	drawing no	C 909

scale bar

AG11

CANTERBURY ROAD

LIBERTY STREET

PLATTS AVENUE



INDICATIVE DEVELOPMENT
CONCEPT – ADJOINING LAND: SITE B

MIXED USE DEVELOPMENT CONCEPT
658-668 CANTERBURY ROAD,
BELMORE (SITE B)
LEVEL 6 PLAN

issue	amendment	date	legend
A	DEVELOPMENT APPLICATION	27.11.15	

do not scale from drawings.
room layout architect's floor plan (fig no 4480)

the layout shown and the areas noted on this drawing are indicative only. layouts are to
be read in conjunction with floor plans, elevations & sections.



scale bar

client
HOLT POINT PTY LTD
c/o STATEWIDE PLANNING

stanisic architects

Level 2/20 Liverpool Street, Suite 501/502, Sydney NSW 2010
T: 61 2 938 2288
www.stanisic.com.au ABN 1120251481

checked	author	scale	project no	issue
	AH	1:200@A1		A
drawn	Author		15 002	drawing no

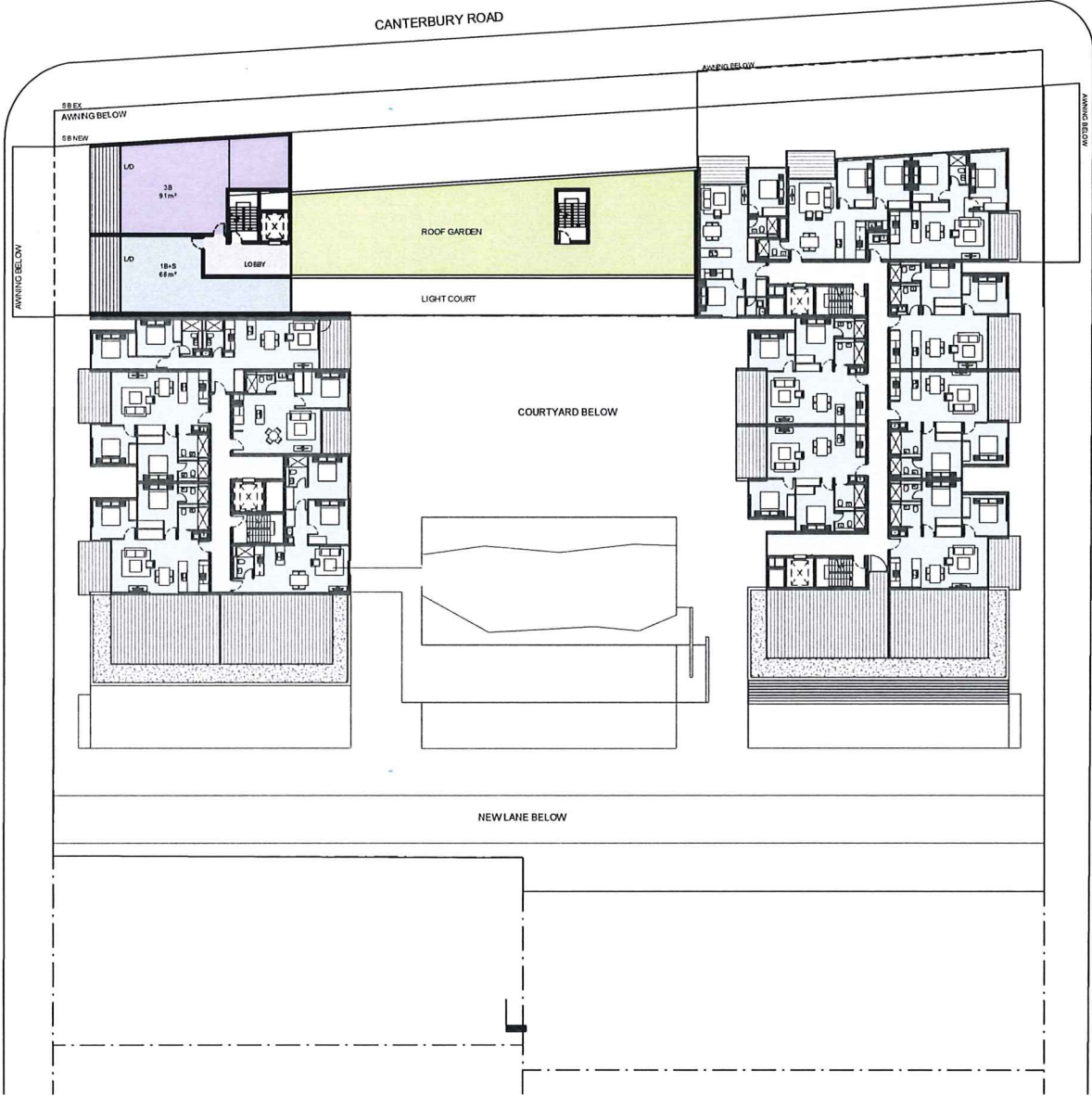
C 910

A911

CANTERBURY ROAD

LIBERTY STREET

PLATTS AVENUE



INDICATIVE DEVELOPMENT
CONCEPT – ADJOINING LAND: SITE B

MIXED USE DEVELOPMENT CONCEPT
658-668 CANTERBURY ROAD,
BELMORE (SITE B)
LEVEL 7 PLAN

issue	amendment	date	legend
A	DEVELOPMENT APPLICATION	27.11.12	

do not scale from drawings.
consult architect's office (page no 448)

the layout shown and the areas noted on this drawing are indicative only. layouts are to
be read in conjunction with floor plans, elevations & sections.



client
HOLT POINT PTY LTD
c/o STATEWIDE PLANNING

stanisic architects

Level 22 24 Liverpool Street Melbourne VIC 3000
T: 03 9382 2388
www.stanisic.com.au ABN 11302631461

checked	AH	scale	1:200@A1	issue	A
drawn	Author	project no	15 002	drawing no	C 911

C 911



CANTERBURY ROAD

LIBERTY STREET

PLATT'S AVENUE



INDICATIVE DEVELOPMENT
CONCEPT - ADJOINING LAND: SITE B

issue	amendment	date	legend
A	DEVELOPMENT APPLICATION	27.11.12	

do not scale from drawings.
consult architect's office (tag no 4483)

the legs of shown and the axes noted on this drawing are indicative only. layouts are to be read in conjunction with floor plans, elevations & sections.



HOLT POINT PTY LTD
c/o STATEWIDE PLANNING

stanisic architects

Level 27/28 Liverpool Exchange Site 15/19 May NSW 2012
T: 011 2 9354 2388
www.stanisic.com.au ABN 11300832461

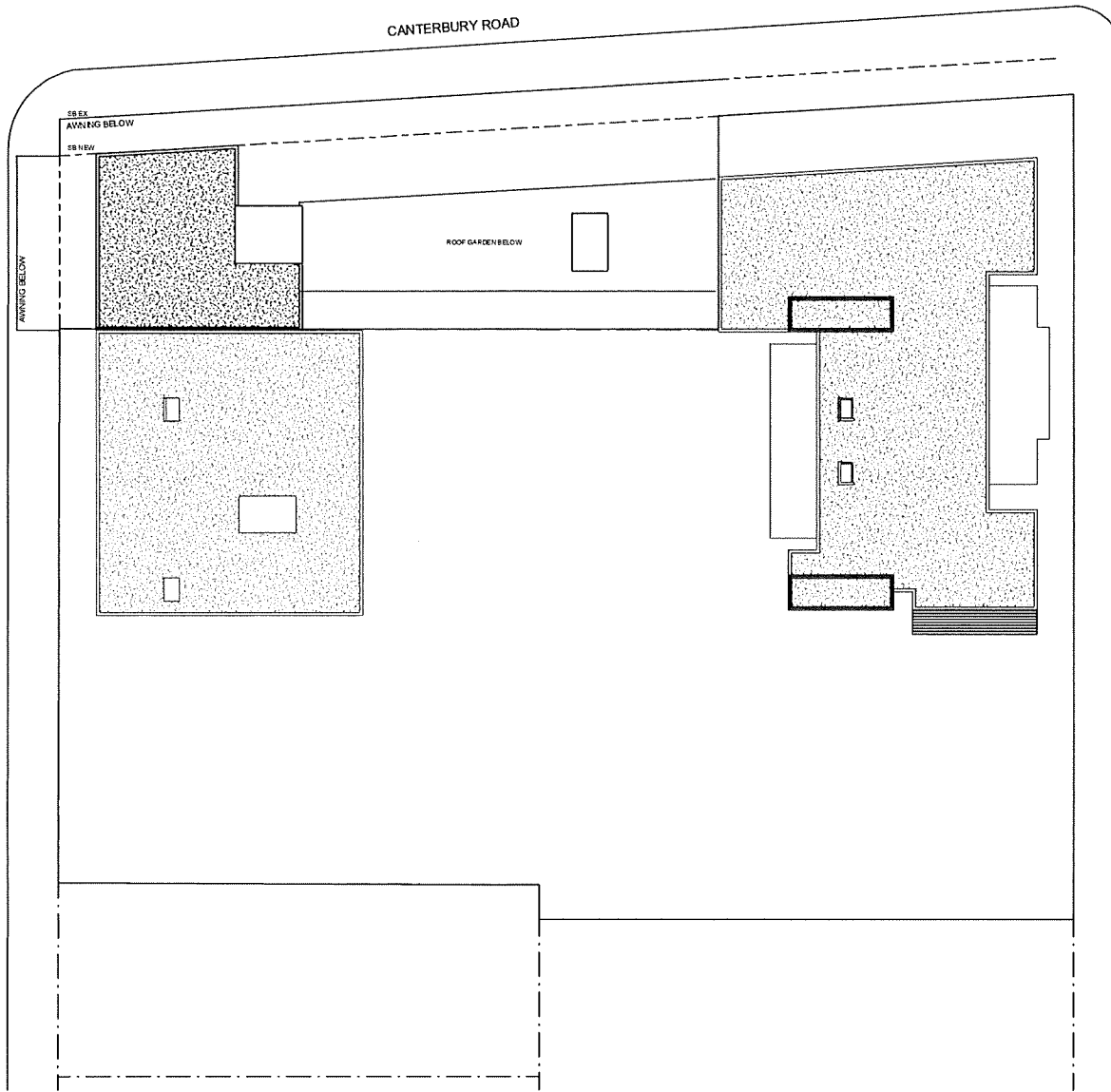
MIXED USE DEVELOPMENT CONCEPT
658-668 CANTERBURY ROAD,
BELMORE (SITE B)
LEVEL 8 PLAN

checked	AH	scale	1:200@A1	issue	A
drawn	Author	project no	15 002	drawing no	C 912

LIBERTY STREET

CANTERBURY ROAD

PLATTS AVENUE



INDICATIVE DEVELOPMENT
CONCEPT - ADJOINING LAND: SITE B

iss. no.	amendment	date	type
A	DEVELOPMENT APPLICATION	27.11.12	



HOLT POINT PTY LTD
c/o STATEWIDE PLANNING

stanisic architects

Level 27/28 Liverpool Street East Sydney NSW 2013
T: 61 2 9352 2396
www.stanisic.com.au ABN 11 002 03 461

MIXED USE DEVELOPMENT CONCEPT
658-668 CANTERBURY ROAD,
BELMORE (SITE B)
ROOF PLAN

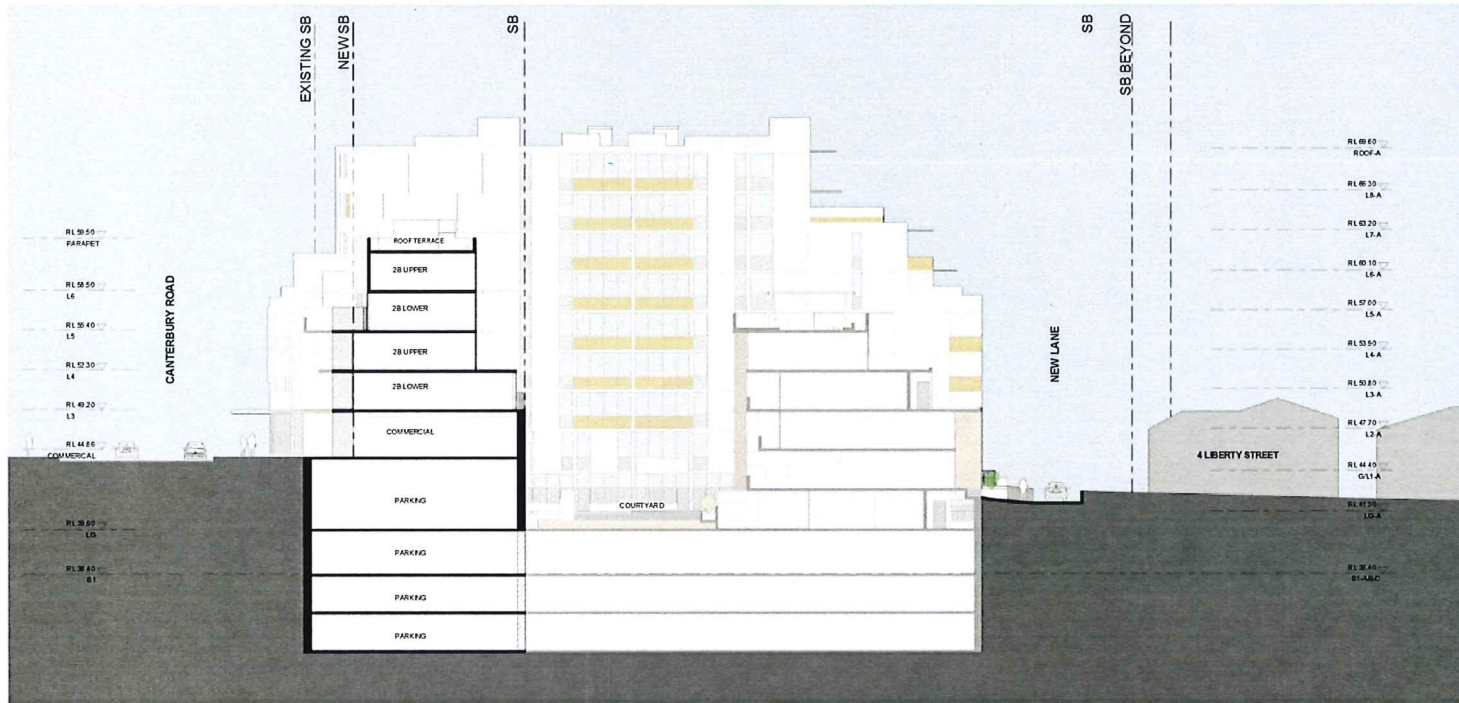
checked AH scale 1:200 @ A1 issue A
drawn Author prepared 15.02.10 sheet 2 of 2

do not scale from drawings.
consult architect's office (reg no 4482)

the layout shown and the areas noted on this drawing are indicative only. layouts are to
be read in conjunction with floor plans, elevations & sections.

scale bar

C 913



INDICATIVE DEVELOPMENT
CONCEPT – ADJOINING LAND: SITE B

issue	amendment	date	legend
A	DEVELOPMENT APPLICATION	27.11.12	

do not take from drawings
without architect's consent (reg. no. 448)

the layout shown and the areas noted on this drawing are indicative only. layouts are to
be read in conjunction with floor plans, elevations & sections.



HOLT POINT PTY LTD
c/o STATEWIDE PLANNING

stanislav architects

Level 22/23 Upper Level Street, Melbourne VIC 3000
T: 03 9352 2588
www.stanislav.com.au ABN 11302833461

MIXED USE DEVELOPMENT CONCEPT
658-668 CANTERBURY ROAD,
BELMORE (SITE B)
SECTION

checked	author	scale	project	issue
AH	Author	1:200@A1	15002	A

BUILDING C

A211 G
A210 F
A209 E

LIBERTY STREET ABOVE

CANTERBURY ROAD ABOVE

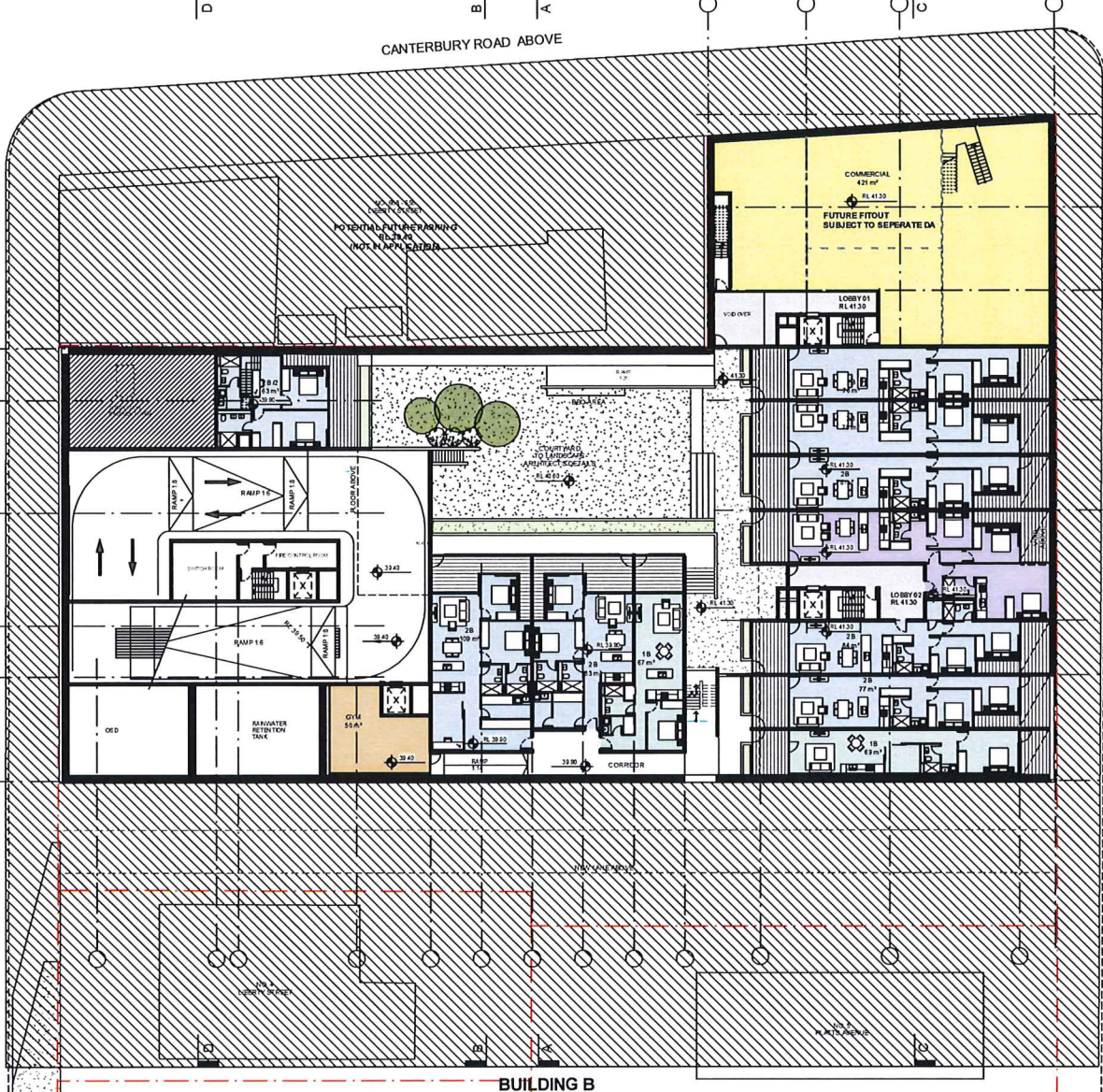
A209 D A206 B A205 C A207 G

PLATTS AVENUE ABOVE

BUILDING A

G
F
E

BUILDING B



issue	amendment	date	reason
2	ISSUE FOR INFORMATION	26.03.13	
3	ISSUE FOR INFORMATION	01.03.13	
4	ISSUE FOR INFORMATION	07.03.13	
5	ISSUE FOR INFORMATION	16.03.13	
6	ISSUE FOR INFORMATION	22.03.13	
8	ISSUE FOR INFORMATION	28.03.13	

- (A) ADAPTABLE UNIT
- (U) UNIVERSAL UNIT
- 1B
- 2B
- 3B



HOLT POINT PTY LTD
C/O STATEWIDE PLANNING

stanisic architects

Level 2 240 Liverpool Drive, East Sydney NSW 2010
T: 02 9399 7265
www.stanisic.com.au ABN: 1100253461

642-644 CANTERBURY RD, 1-3 PLATTS AVE
& 2A, 2B, 2C & 2D LIBERTY ST, BELMORE

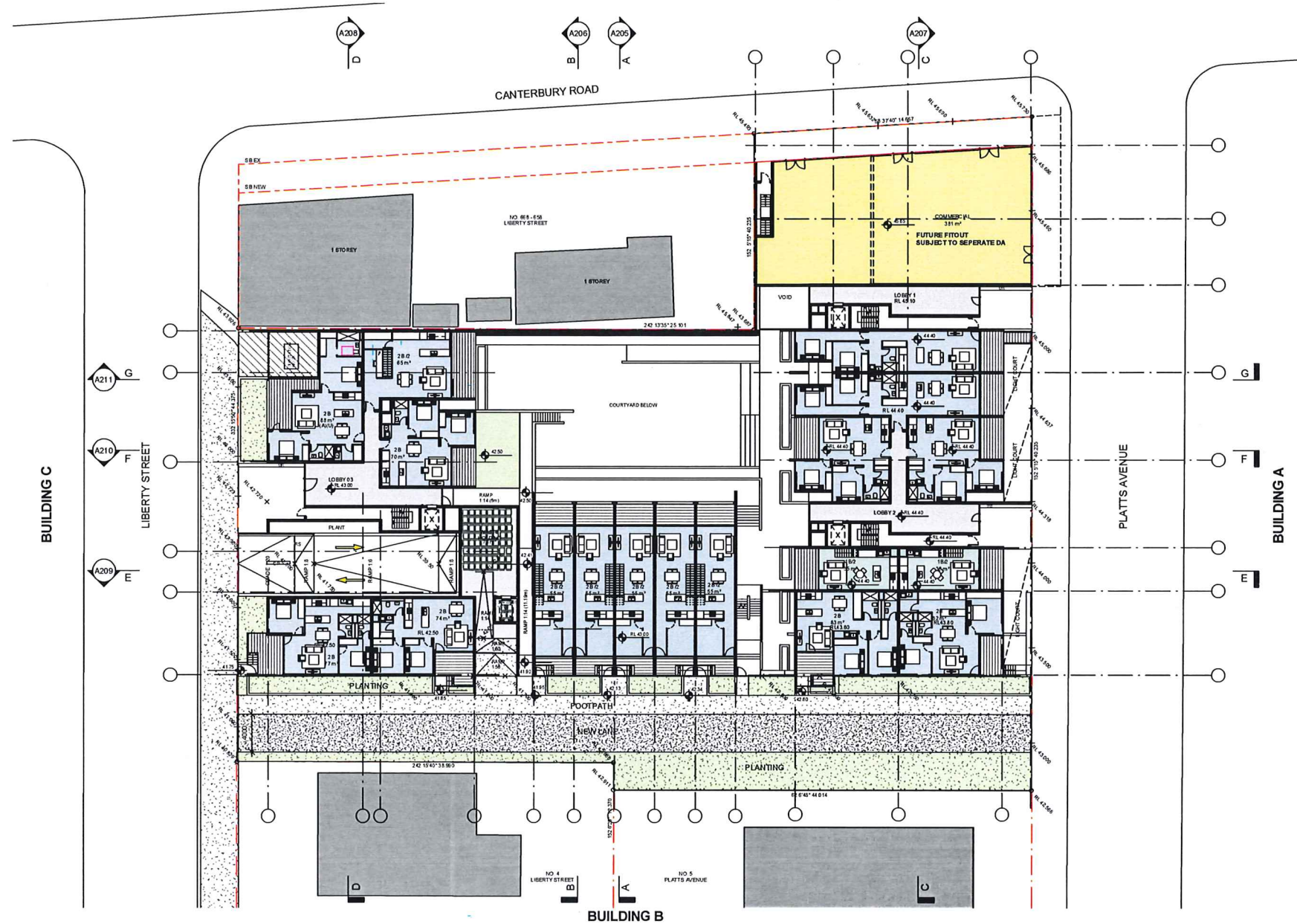
LOWER GROUND PLAN

checked	checker	scale	1:200@A1	issue	8
drawn	Author	project no	15 002	drawn by	

do not take from drawings
copyright architect Stanisic [reg no 4480]

The layout shown and the area noted on this drawing are indicative only. Layouts are to be read in conjunction with floor plans, elevations & sections.

scale bar



issue	amendment	date
1	ISSUE FOR COMMENT (MEETING 1)	23.07.15
2	ISSUE FOR INFORMATION	26.03.15
3	ISSUE FOR INFORMATION	01.09.15
4	ISSUE FOR INFORMATION	07.09.15
5	ISSUE FOR INFORMATION	16.09.15
6	ISSUE FOR INFORMATION	22.09.15
8	ISSUE FOR INFORMATION	28.09.15

legend	
UA	ADAPTABLE UNIT
UN	UNIVERSAL UNIT
18	18
26	26
28	28



HOLT POINT PTY LTD
C/O STATEWIDE PLANNING

stanisic architects

Level 2, 243, Liverpool Street, Brisbane QLD 4000
T: 61 7 320 3366
www.stanisic.com.au A BN 11300334 481

Project: 642-644 CANTERBURY RD, 1-3 PLATTS AVE & 2A, 2B, 2C & 2D LIBERTY ST, BELMORE

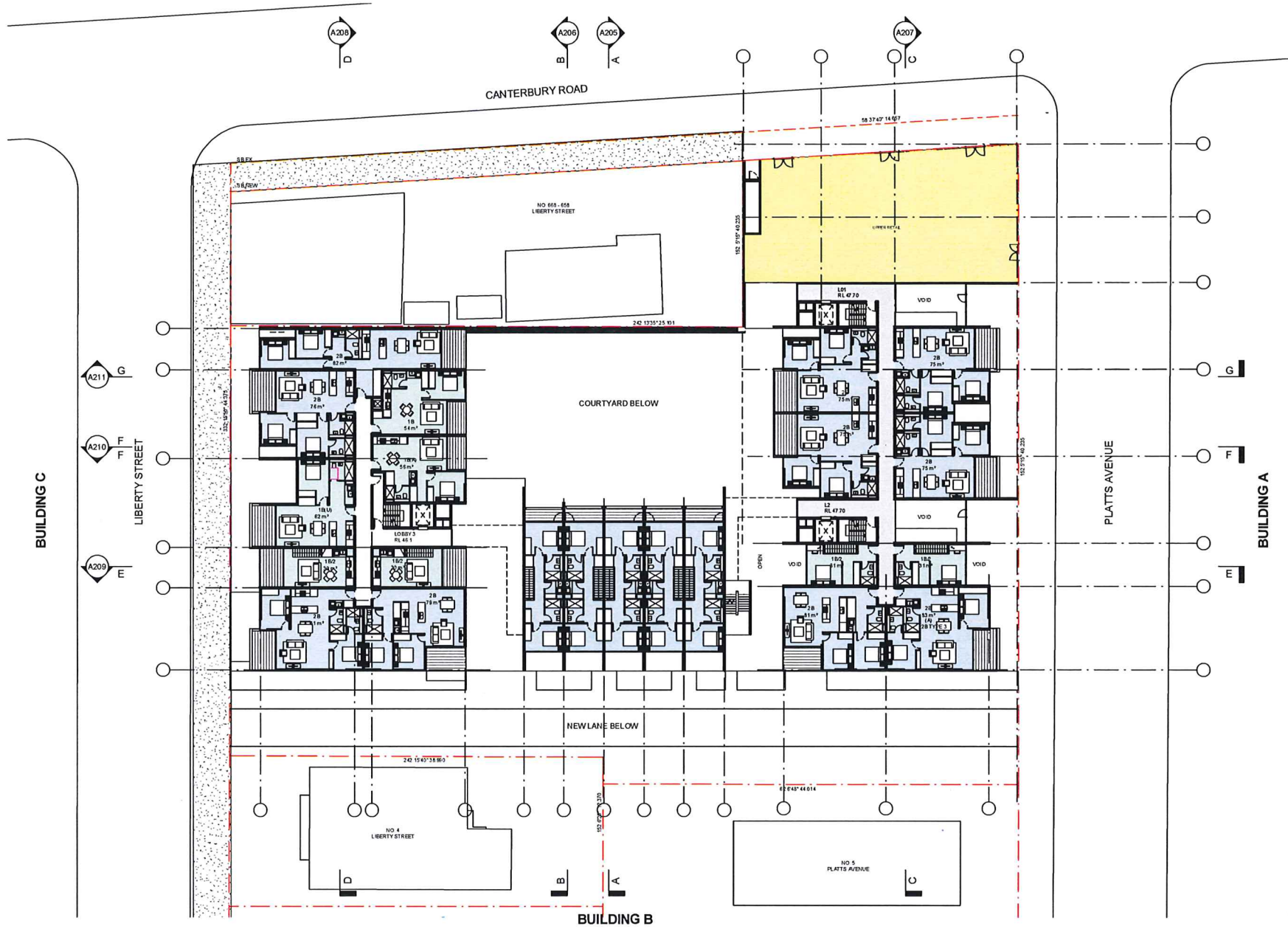
dra:whg GROUND / LEVEL 1 PLAN

checked: AH scale: 1:200@A1 issue: 8
drawn: PH project no: 15 002 dra:whg no: A 105

do not scale from drawings.
reprinted architect's work starting (pg no 480)

the layout shown and the names noted on this drawing are indicative only. layouts are to be read in conjunction with floor plans, elevations & sections.

scale bar



issue	amendment	d/e	legend
2	ISSUE FOR INFORMATION	26.05.15	
3	ISSUE FOR INFORMATION	01.09.15	
4	ISSUE FOR INFORMATION	07.09.15	
5	ISSUE FOR INFORMATION	16.09.15	
6	ISSUE FOR INFORMATION	28.09.15	

- (A) ADAPTABLE UNIT
- (U) UNIVERSAL UNIT
- 1B
- 2B
- 3B



client
HOLT POINT PTY LTD
 C/O STATEWIDE PLANNING

stanisic architects

Level 2 2D Support Draw, East Sydney NSW 2010
 T 61 2 939 2283
 www.stanisic.com.au ABN 1120551461

project
642-644 CANTERBURY RD, 1-3 PLATTS AVE & 2A, 2B, 2C & 2D LIBERTY ST, BELMORE

drawing
LEVEL 2 PLAN

checked	checker	scale	1:200@A1	issue	8
drawn	Author	project no	15 002	drawing no	A 106

do not take from drawings
 completed architect Stanisic (reg no 4480)

The layout shown and the areas noted on this drawing are indicative only. You are to read in conjunction with floor plans, elevations & sections.

scale bar

DA Landscape Plan
Revision A

MIXED USE DEVELOPMENT BELMORE

642-644 CANTERBURY RD 1-3 PLATTS
AVE & 2A, 2B, 2C & 2D LIBERTY ST

FOR HOLT POINT Pty Ltd

30/10/2015

**SITEDSIGN
+STUDIOS**

www.sdstudios.com.au

PO BOX 265 SEAFORTH NSW 2092
P: 1300 22 44 55
E: julian@sdstudios.com.au

PLANTING IMAGE

Trees



Melaleuca quinquenervia - Broad Leaf Paperbark
Ficus ealyana - Capital Capital Pear
Leptospermum petersonii - Lemon Scented Tea Tree
Azalea japonica - Japanese Maple

Shrubs/ Accent



Cyrtosperma - Grass
Viburnum edulis - Sweet Viburnum
Phormium tenax - Maori Cheif
Fagopyrum esculentum - Bird's Nest Fern

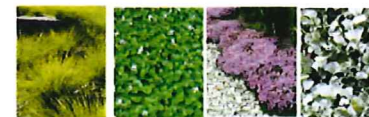


Chrysanthemum - Flower
Strelitzia reginae - Bird of Paradise
Stylidium lineare - Sacred Bamboo
Stylidium lineare - Port Moresby Magnolia

Groundcovers



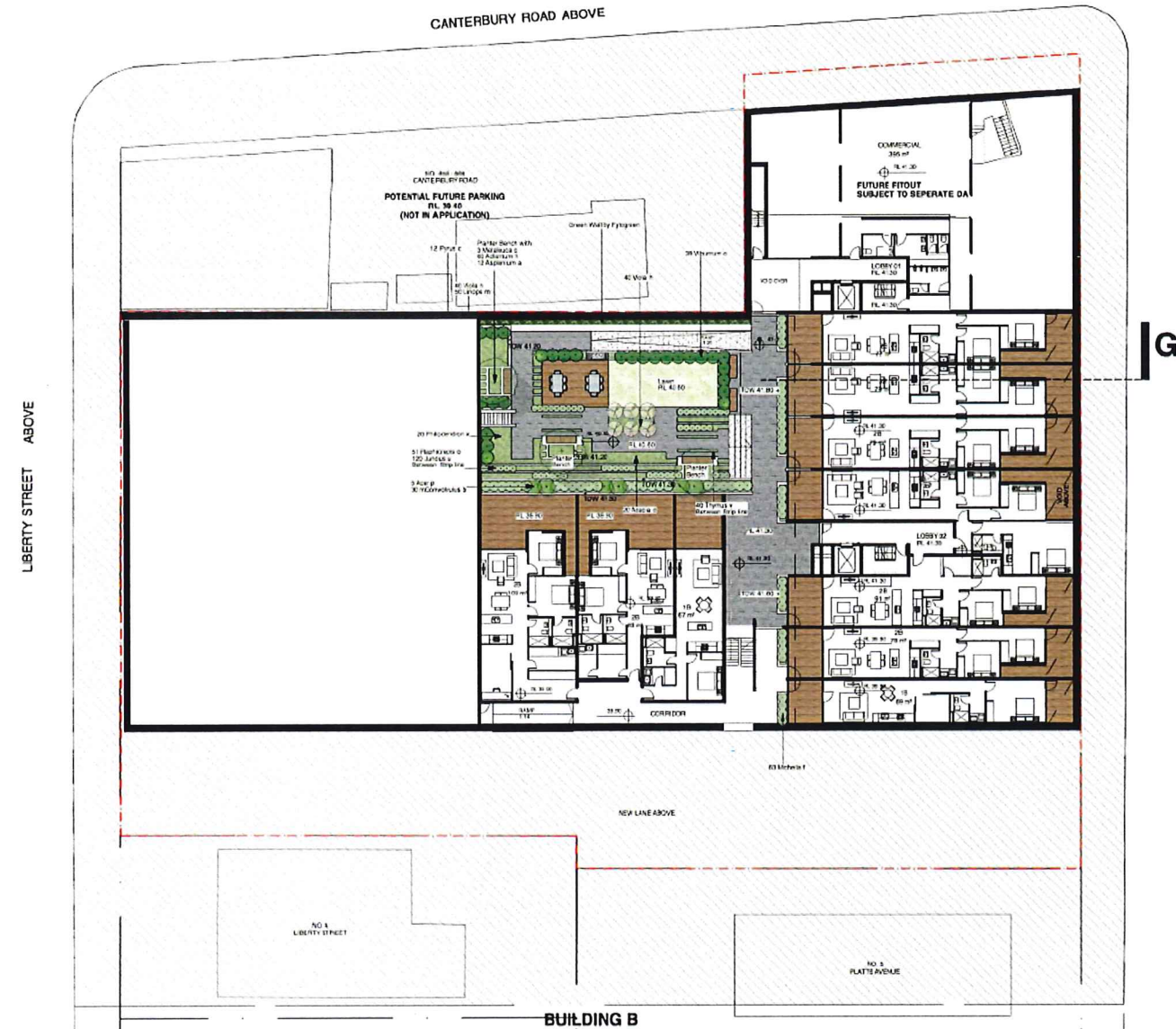
Saxifraga - Stone
Leucophaea - Surf, Fly Trapper Purple
Cornifolia - Blue Moon
Mentha - Rough Malabar Iron



Coronilla - Sunk
Urtica dioica - Hedge Nettle
Thymus serpyllum - Mother of Thyme
Diarrhea - Silver Falls, Kibara, Wood



Asplenium - Fern
Asplenium - Fern
Phlox - Phlox
Juniperus - Juniper



PLANTING LEGEND

- Callistemon viminalis (Weeping Bottlebrush)
- Melaleuca quinquinervis (Board Leaf Paperbark)
- Acer palmatum (Japanese Maple)
- Pyrus calleryana (Capital Pear)
- SHRUBS:**
 - Michelia fida (Port Wine Magnolia)
 - Raphiophora Oriental Pear
 - Viburnum adoratissimum (Sweet Viburnum)
 - Phoridium tenax (Maori Chef)
- ACCENT:**
 - Cycas revoluta (Cycad)
 - Streitria reginae (Bird of Paradise)
 - Asplenium Australasicum (Bird Nest Fern)
- GROUNDCOVERS/CLIMBERS:**
 - Senecio mandraliscae (Blue Chalk Sticks)
 - Linopis muscari (Turk Lily/Royal Purple)
 - Convolvulus Blue Moon (Blue Moon)
 - Adiantum nigrum (Rough Maidenhair Fern)
 - Thymus vulgaris (Common Thyme)
 - Lomandra tanica (Fine Leaved Mat Rush)
 - Viola hederaea (Native Violet)
 - Dichondra Silver Falls (Silver Falls/Kidney Weed)
 - Acacia cognata (Nana Dwarf Bower Wattle)
 - Juncus ustulatus (Tussock Grass)
 - Phlodonon xanadu (Xanadu)
 - Ocimum dosmifolius (Ball Everlasting)

Planting Schedule

Botanical Name	Common Name	Pot Size	Height (m)	Quantity
TREES/ PALM				
Acer palmatum	Japanese Maple	150L	6	11
Callistemon viminalis	Weeping Bottlebrush	150L	6	6
Melaleuca quinquinervis	Board Leaf Paperbark	200L	10	11
Pyrus calleryana	Capital Pear	45L	5	44
SHRUBS/ACCENT				
Asplenium australasicum	Bird Nest Fern	200mm	1	20
Cycas revoluta	Cycad	300mm	1.2	31
Michelia fida	Port Wine Magnolia	300mm	1.4	43
Phoridium tenax	Maori Chef	300mm	1.5	88
Raphiophora Oriental Pear	Oriental Pear	200mm	1	177
Streitria reginae	Bird of Paradise	200mm	1.2	14
Viburnum adoratissimum	Sweet Viburnum	300mm	2.5	122
GROUNDCOVERS/FERN				
Acacia cognata nana	Dwarf Bower Wattle	140mm	0.8	40
Adiantum nigrum	Rough Maidenhair Fern	140mm	0.5	60
Convolvulus Blue Moon	Blue Moon	140mm	0.3	120
Dichondra Silver Falls	Silver Falls Kidney Weed	140mm	0.2	150
Juncus ustulatus	Tussock Grass	140mm	0.8	120
Linopis muscari	Turk Lily/Royal Purple	140mm	0.4	265
Lomandra tanica	Fine Leaved Mat Rush	140mm	0.4	140
Ocimum dosmifolius	Ball Everlasting	140mm	0.5	90
Phlodonon xanadu	Xanadu	140mm	0.5	20
Senecio mandraliscae	Blue Chalk Sticks	140mm	0.3	160
Thymus vulgaris	Common Thyme	140mm	0.2	40
Viola hederaea	Native Violet	140mm	0.3	80

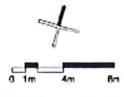
PLANTER BOX Minimum soil depths:
 • 300 – 450mm for turf and groundcovers
 • 450 – 600mm for small shrubs
 • 600 – 750mm for medium shrubs
 • 750 – 900mm for small trees.

ALL EXISTING & PROPOSED PLANTING ARE SHOWN & SUBJECT TO APPROVAL BY THE AUTHOR AND INTERESTED PARTIES. CHECKING DIMENSIONS SHOULD TAKE PRECEDENCE OVER ANY OTHER DIMENSIONS UNLESS OTHERWISE NOTED BY CONTRACT DOCUMENTS.

AMENDMENTS		
ISSUE	AMENDMENT	DATE
A	DA Issue Rev A	23/10/15

- LEGEND**
- Concrete Driveway
 - Pathway paving
 - "Exposed Aggregate Concrete Type 1"
 - As Selected Decking
 - Exposed Aggregate Concrete Type 2
 - Green Wall Area
 - Bench Seat
 - Planter Box with Built in Bench "Charlie Bush"

- Lawn Area
- Boundary
- Existing Level
- Proposed Level



PROJECT:
 MIXED USE DEVELOPMENT BELMORE
 55-64 CANTERBURY RD 15 PLATTS
 AVE & A1, B1, C1 & D1 LIBERTY ST

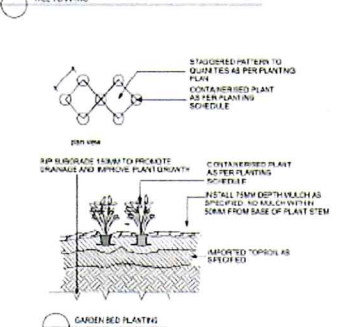
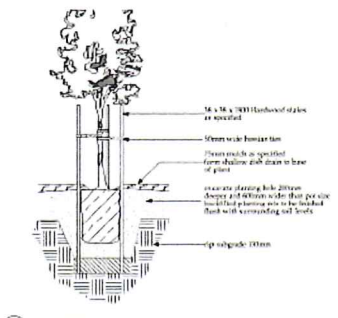
CLIENT:
 HOLY POINT PTY LTD

LANDSCAPE ARCHITECT:
SITEDESIGN + STUDIOS
 PO BOX 265 BELMONT NEW SOUTH WALES 1500
 P: 1502 22 44 55 E: info@siteandstudios.com.au
 www.sdstudios.com.au

Drawing Title: LOWER GROUND FLOOR LANDSCAPE CONCEPT PLAN			
Scale: 1:200 @ A1	Date: 23/10/15	Project #: 15-843	Drawing #: DA 01
Drawn: IR	Checked: JD	Revision: A	

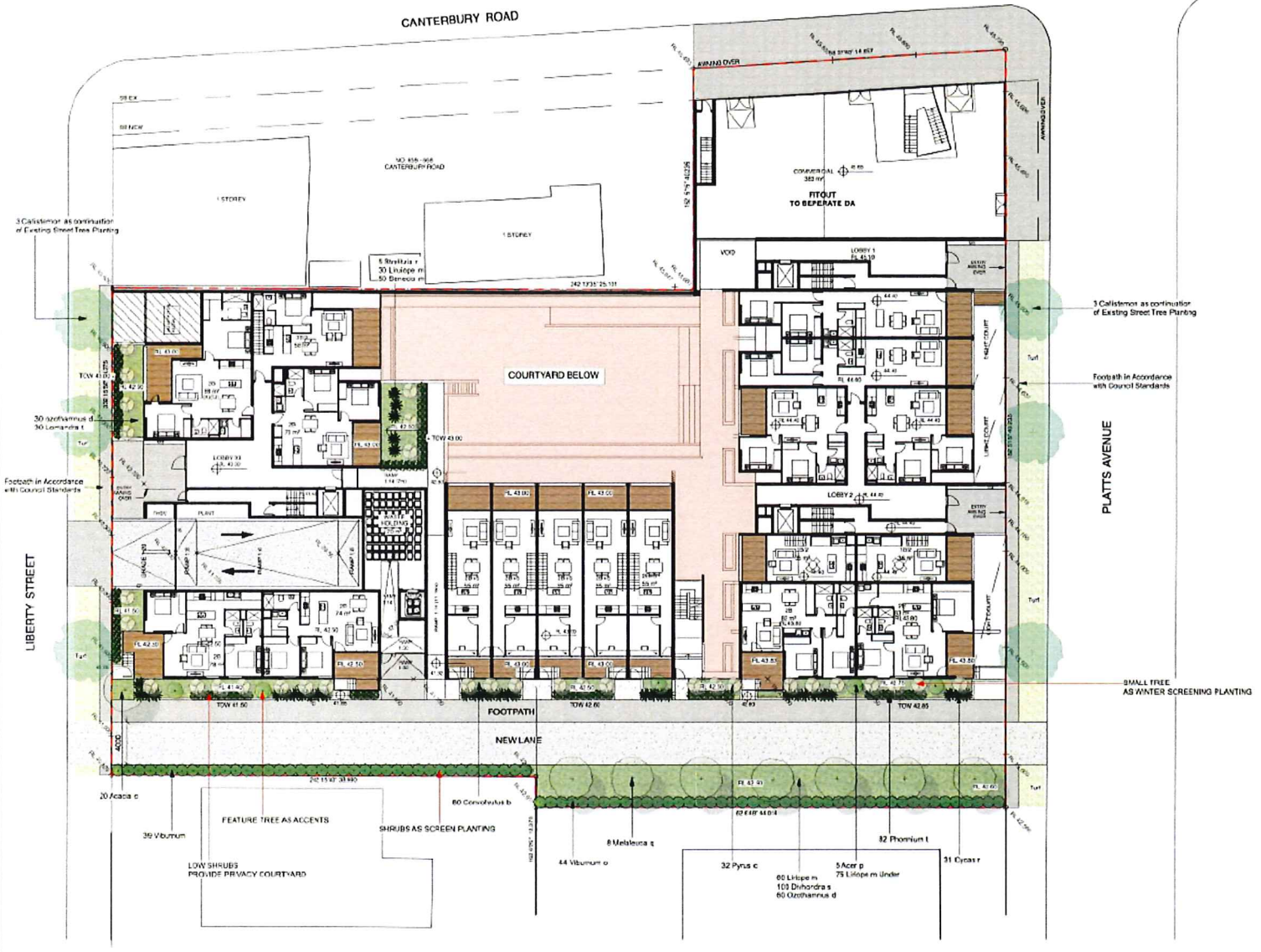
PLANTING LEGEND

- Callistemon viminalis (Weeping Bottlebrush)
- Melaleuca quinquinervia (Board Leaf Paperbark)
- Acer palmatum (Japanese Maple)
- Pyrus cateryana (Capital Pear)
- SHRUBS:**
 - Michelia figo (Port Wine Magnolia)
 - Raphionopis 'Oriental Pearl'
 - Viburnum odoratissimum (Sweet Viburnum)
 - Phormium tenax (Maori Chieft)
- ACCENT:**
 - Cycas revoluta (Cycad)
 - Strelitzia reginae (Bird of Paradise)
 - Asplenium Australasicum (Bird Nest Fern)
- GROUNDCOVERS/CLIMBERS:**
 - Senecio mandraliscae (Blue Chalk Stricks)
 - Liriope muscari (Turf Lily / Royal Purple)
 - Gonolobus Blue Moon (Blue Moon)
 - Adiantum hispidulum (Rough Maidenhair Fern)
 - Thymus vulgaris (Common Thyme)
 - Lomandra Tanka (Fine Leaved Mat Rush)
 - Viola heterocarpa (Native Violet)
 - Dichondra Silver Falls (Silver Falls Kidney Weed)
 - Acacia cognata Nana (Dwarf Bower Wattle)
 - Juncus ustulatus (Tussock Grass)
 - Phiodendron xanadu (Xanadu)
 - Ozothamnus diosmifolius (Ball everlasting)



PLANTER BOX Minimum soil depths:

- 300 – 450mm for turf and groundcovers
- 450 – 600mm for small shrubs
- 600 – 750mm for medium shrubs
- 750 – 900mm for small trees.

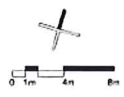


ALL EXISTING & PROPOSED PLANTINGS ARE FINISHED & PLANTED TO THE FULL DEPTH & IN PLACE AT THE END OF CONSTRUCTION. PLANTINGS BETWEEN 600mm & 1000mm DEPTH INCLUDING EXISTING PLANTINGS WILL BE REPLACED WITH THE SAME PLANTING SPECIES. PLANTINGS DEEPER THAN 1000mm WILL BE REPLACED WITH THE SAME PLANTING SPECIES.

AMENDMENTS		
ISSUE	AMENDMENT	DATE
A	DA Issue Rev A	30/10/15

LEGEND	
	Concrete Driveway
	Pathway paving
	Exposed Aggregate Concrete Type 1'
	As Selected Decking

	Lean Area
	Boundary
	Existing Level
	Proposed Level
	Existing Trees to be Retained
	Existing Trees to be Removed

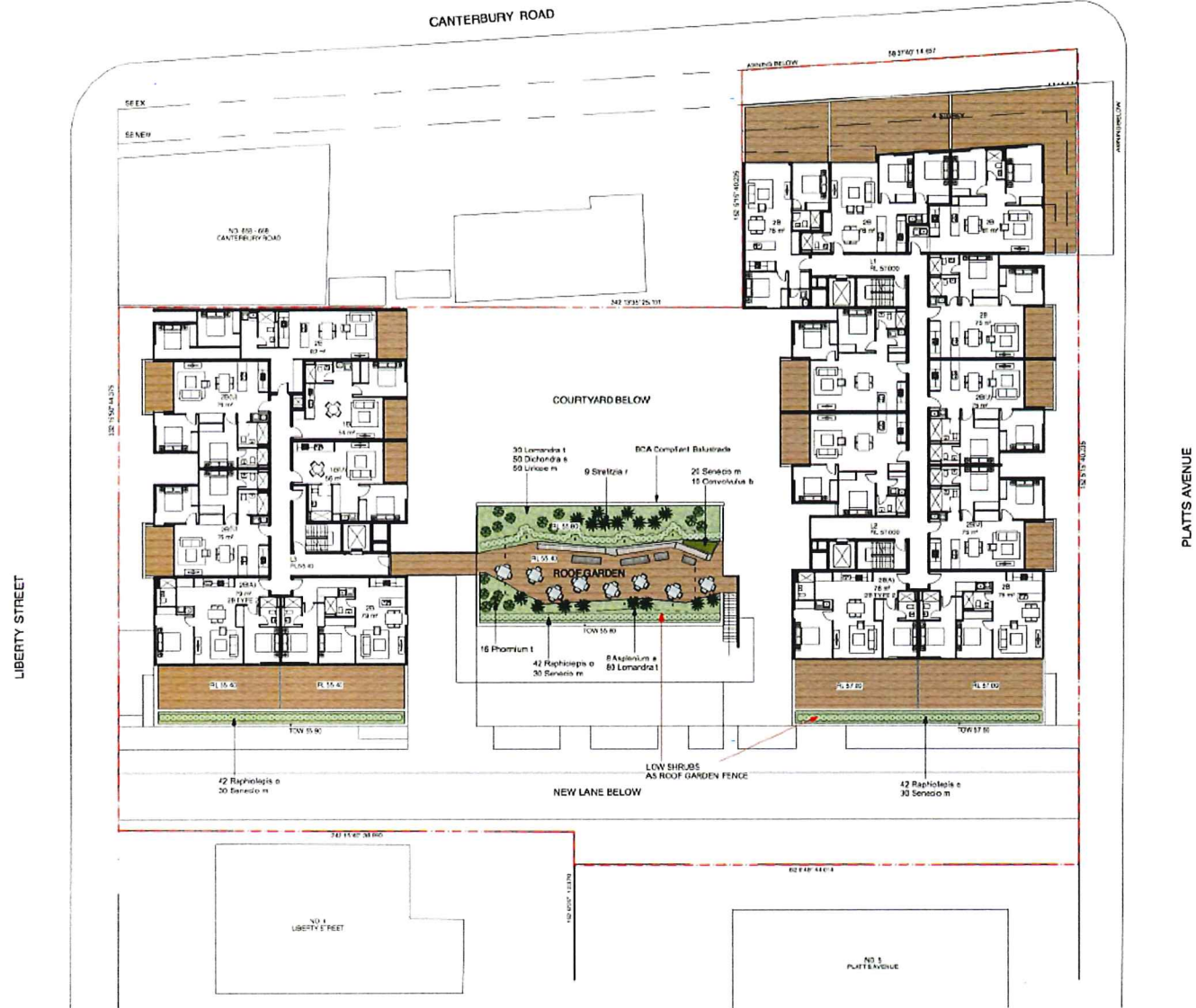


PROJECT:
MIXED USE DEVELOPMENT BELMORE
84-86 CANTERBURY RD 1/3 PLATTS
AVE & A/LIB, J/C & 25 LIBERTY ST

CLIENT:
HOLT FORT PTY LTD

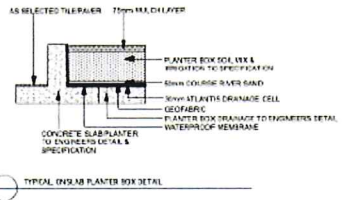
LANDSCAPE ARCHITECT:
SITEDESIGN + STUDIOS
10 BOX 215 SEAFORTH NSW 2008
P: 02 22 18 300
E: info@sitestudios.com.au
www.sitestudios.com.au

Drawing Title:			
GROUND FLOOR LANDSCAPE CONCEPT PLAN			
Scale:	Date:	Project #:	Drawing #:
1:200 @ A1	30/10/15	15-843	DA 02
Drawn:	Checked:	Revision:	
IR	JB	A	



PLANTING LEGEND

- Callistemon viminalis (Weeping Bottlebrush)
- Melaleuca quinquervia (Board Leaf Paperbark)
- Acer palmatum (Japanese Maple)
- Pyrus calleryana (Capital Pear)
- SHRUBS:**
 - Michelia figo (Port Wine Magnolia)
 - Raphiolepis 'Oriental Pearl'
 - Viburnum odoratissimum (Sweet Viburnum)
 - Phormium terax (Maori Chef)
- ACCENT:**
 - Cycas revoluta (Cycad)
 - Strelitzia reginae (Bird of Paradise)
 - Asplenium Australasicum (Bird Nest Fern)
- GROUNDCOVERS/CLIMBERS:**
 - Sesuvia mandraliscae (Blue Chalk Sticks)
 - Liriope muscari (Turf Lily Royal Purple)
 - Convolvulus Blue Moon (Blue Worn)
 - Adiantum hispidulum (Rough Maidenhair Fern)
 - Thymus vulgaris (Common Thyme)
 - Lomandra Tanka (Fine Leaved Mat Rush)
 - Viola hederacea (Native Violet)
 - Dichondra Silver Falls (Silver Falls Kidney Weed)
 - Acacia cognata nana (Dwarf Bowler Wattle)
 - Junus ussibus (Tussock Grass)
 - Pholidendron karasii (Karasudu)
 - Ozothamnus diosmifolia (Ball everlasting)



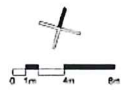
PLANTER BOX Minimum soil depths:

- 300 – 450mm for turf and groundcovers
- 450 – 600mm for small shrubs
- 600 – 750mm for medium shrubs
- 750 – 900mm for small trees

ALL DRAWINGS AND DETAILS, INCLUDING ANY REVISIONS, ARE SUBJECT TO THE APPROVAL OF THE LOCAL COUNCIL AND ANY APPLICABLE BY-LAWS. THE CLIENT ACCEPTS RESPONSIBILITY FOR OBTAINING ALL NECESSARY PERMITS AND APPROVALS. THE LANDSCAPE ARCHITECT'S LIABILITY IS LIMITED TO THE SERVICES PROVIDED AND DOES NOT EXTEND TO ANY OTHER MATTER.

AMENDMENTS		
ISSUE	AMENDMENT	DATE
A	DA Issue Rev A	30/10/15

LEGEND	
	Concrete Driveway
	Ranch Post
	As Selected Decking
	Boundary
	Existing Level
	Proposed Level

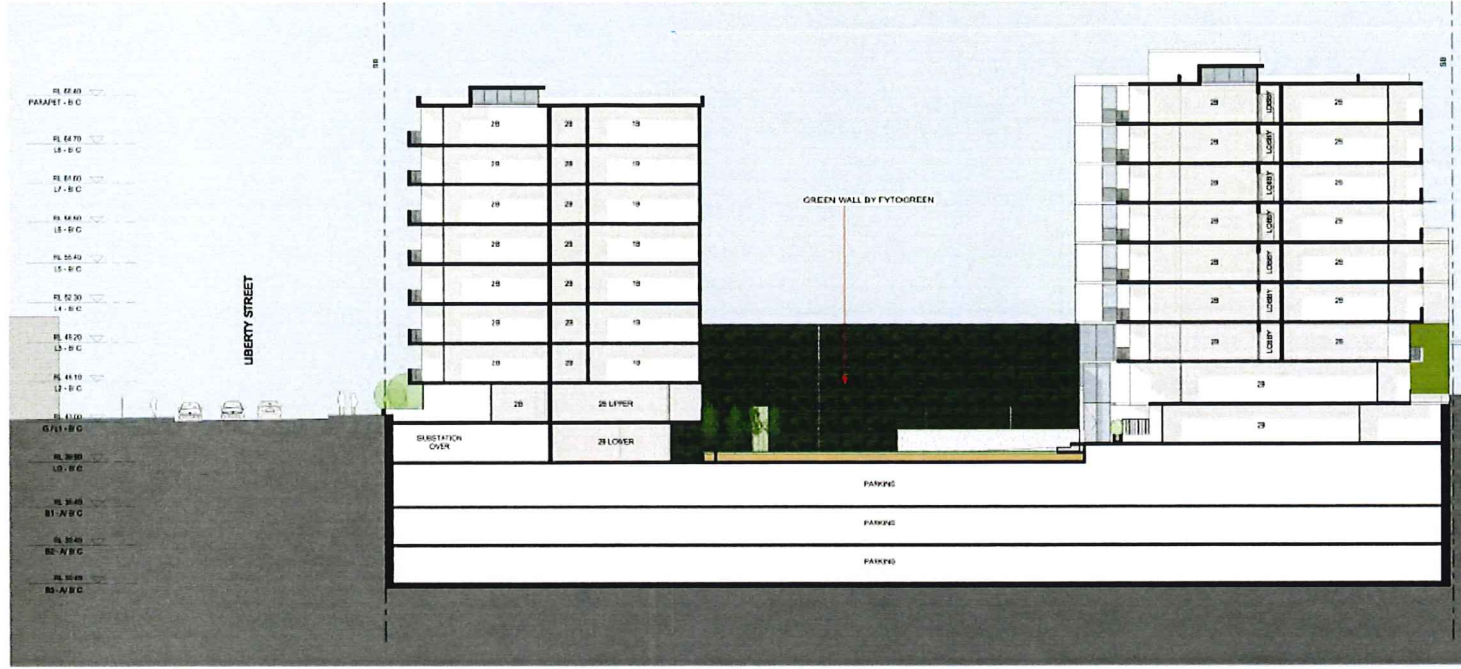


PROJECT:
MIXED USE DEVELOPMENT BELMORE
64-66 CANTERBURY RD 13 PLATTS
AVE & AL. 28, 25 & 26 LIBERTY ST

CLIENT:
HOLT POINT PTY LTD

LANDSCAPE ARCHITECT:
SITEDESIGN + STUDIOS
130 BOX 235 BELMONT NSW 2062
P 1502 22 84 00
E H.MANDRAKIS@SITEDESIGN.COM.AU
www.sdstudios.com.au

Drawing Title:			
LEVEL 5 LANDSCAPE CONCEPT PLAN			
Scale:	Date:	Project #:	Drawing #:
1:200 @ A1	30/10/15	15-843	DA 03
Drawn:	Checked:	Revision:	
IR	JB	A	



BUILDING C

BUILDING A
SECTION G-G (GREEN WALL VIEW)
SCALE 1 : 200

VERTICAL GREEN WALL
PLANTING SCHEDULE

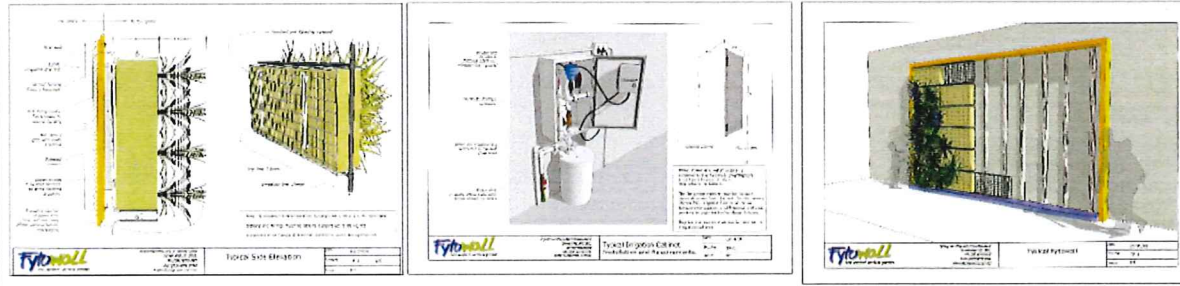
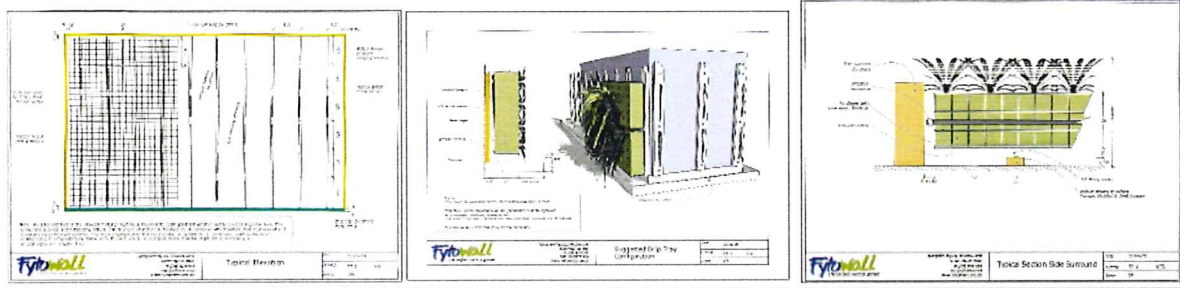
Botanical Name	Common Name	Quantity
<i>Achroodum cristatum</i>	Ferns Lily	550
<i>Conserina glauca</i>	Katling Marpet	500
<i>Convolvulus 'Blue Moon'</i>	Blue Moon	550
<i>Dianella aemulans</i>	Tasman Flax Lily	600
<i>Aranthem cuspisum</i>	Silver Plum	200
<i>Dichondra repens</i>	Kidney Weed	1200
<i>Liriodendron 'Variegata'</i>	Variegated Taff Lily	650
<i>Lomandra banksii</i>	Dwarf Matt Rush	600
<i>Drosera sp.</i>	Rose Fern	400
<i>Chytrotopium platyneuron 'Nigrescens'</i>	Black Mondo	800
<i>Asplenium fabellatum</i>	hecke Fern	1200
<i>Liberia paniculata</i>	Branching Grass Flag	500

FYTOGREEN PTY LIMITED - FYTOWALL MAINTENANCE

Fytogreen Pty Limited supplies, installs and maintains the vertical green wall system called 'Fytowall'. The following information was provided by Fytogreen Pty Ltd and is extracted from their 'Programmed Preventive Maintenance Plan'.

General Services Offered by Fytogreen Australia Pty Ltd:

- Scheduled inspections and all necessary maintenance of plants and growing medium by competent technicians.
- Scheduled maintenance to ensure equipment operates correctly.
- 24/7 Emergency call-out service.



Plant and Growing Mediums - Inspection and Maintenance Matrix:

Plant or Growing Medium	Inspection	Maintenance	Frequency
Check for plant growth and health	Visual inspection	Watering	Weekly
Check for plant growth and health	Visual inspection	Fertilising	Monthly
Check for plant growth and health	Visual inspection	Pruning	Quarterly
Check for plant growth and health	Visual inspection	Watering	Weekly
Check for plant growth and health	Visual inspection	Fertilising	Monthly
Check for plant growth and health	Visual inspection	Pruning	Quarterly
Check for plant growth and health	Visual inspection	Watering	Weekly
Check for plant growth and health	Visual inspection	Fertilising	Monthly
Check for plant growth and health	Visual inspection	Pruning	Quarterly

Drainage Irrigation and Fertilisation - Inspection and Maintenance Matrix:

Area or System	Inspection	Maintenance	Frequency
Check for water level in reservoir	Visual inspection	Watering	Weekly
Check for water level in reservoir	Visual inspection	Fertilising	Monthly
Check for water level in reservoir	Visual inspection	Pruning	Quarterly
Check for water level in reservoir	Visual inspection	Watering	Weekly
Check for water level in reservoir	Visual inspection	Fertilising	Monthly
Check for water level in reservoir	Visual inspection	Pruning	Quarterly
Check for water level in reservoir	Visual inspection	Watering	Weekly
Check for water level in reservoir	Visual inspection	Fertilising	Monthly
Check for water level in reservoir	Visual inspection	Pruning	Quarterly



BUILDING A