

02



FOR INFORMATION ONLY:  
NOT IN APPLICATION

issue	amendment	date	legend
A	DEVELOPMENT APPLICATION	27.11.15	

do not scale from drawings.  
consult architect Frank Starke (ph: no 4483)

the layout shown and the areas noted on this drawing are indicative only. layouts are to be read in conjunction with floor plans, elevations & sections.



HOLT POINT PTY LTD  
c/o STATEWIDE PLANNING

stanisic architects

Level 22-23 Liverpool Street, Darling Sydney NSW 2010  
Tel: 02 955 1218  
www.stanisic.com.au ABN 11320252481

prop: MIXED USE DEVELOPMENT BELMORE  
642-644 CANTERBURY RD 1-3 PLATTS  
AVE & 2A, 2B, 2C & 2D LIBERTY ST  
dra: vrp

PERSPECTIVE VIEW 1

checked	author	scale	date	issue
	Author		@A1	A
dra: vrp	project no	15 002	dra: vrp no	DA 701





FOR INFORMATION ONLY:  
NOT IN APPLICATION

issue	amendment	date	log no
A	DEVELOPMENT APPLICATION	27.11.13	

do not scale from drawings.  
consult architect Stanic Architects (reg no 4480)

the layout shown and the areas noted on this drawing are indicative only. layouts are to be read in conjunction with floor plans, elevations & sections.



HOLT POINT PTY LTD  
c/o STATEWIDE PLANNING

stanisic architects

Level 2/20 Liverpool Street Sydney NSW 2010  
T 01 2 955 2288  
www.stanisic.com.au ABN 11 002 33 461

project MIXED USE DEVELOPMENT CONCEPT  
658-668 CANTERBURY ROAD,  
BELMORE (SITE B)  
drawing PERSPECTIVE VIEW 2

checked AH scale @A1 issue A  
drawn Author projectno 15 002 drawingno DA 702

scale bar





FOR INFORMATION ONLY:  
NOT IN APPLICATION

issue	amendment	date	legend
A	DEVELOPMENT APPLICATION	27.11.12	

do not scale from drawings.  
consult architect Stanic Architects (tag no 488)

the layout shown and the massing on this drawing are indicative only. layouts are to be read in conjunction with floor plans, elevations & sections.



HOLT POINT PTY LTD  
c/o STATEWIDE PLANNING

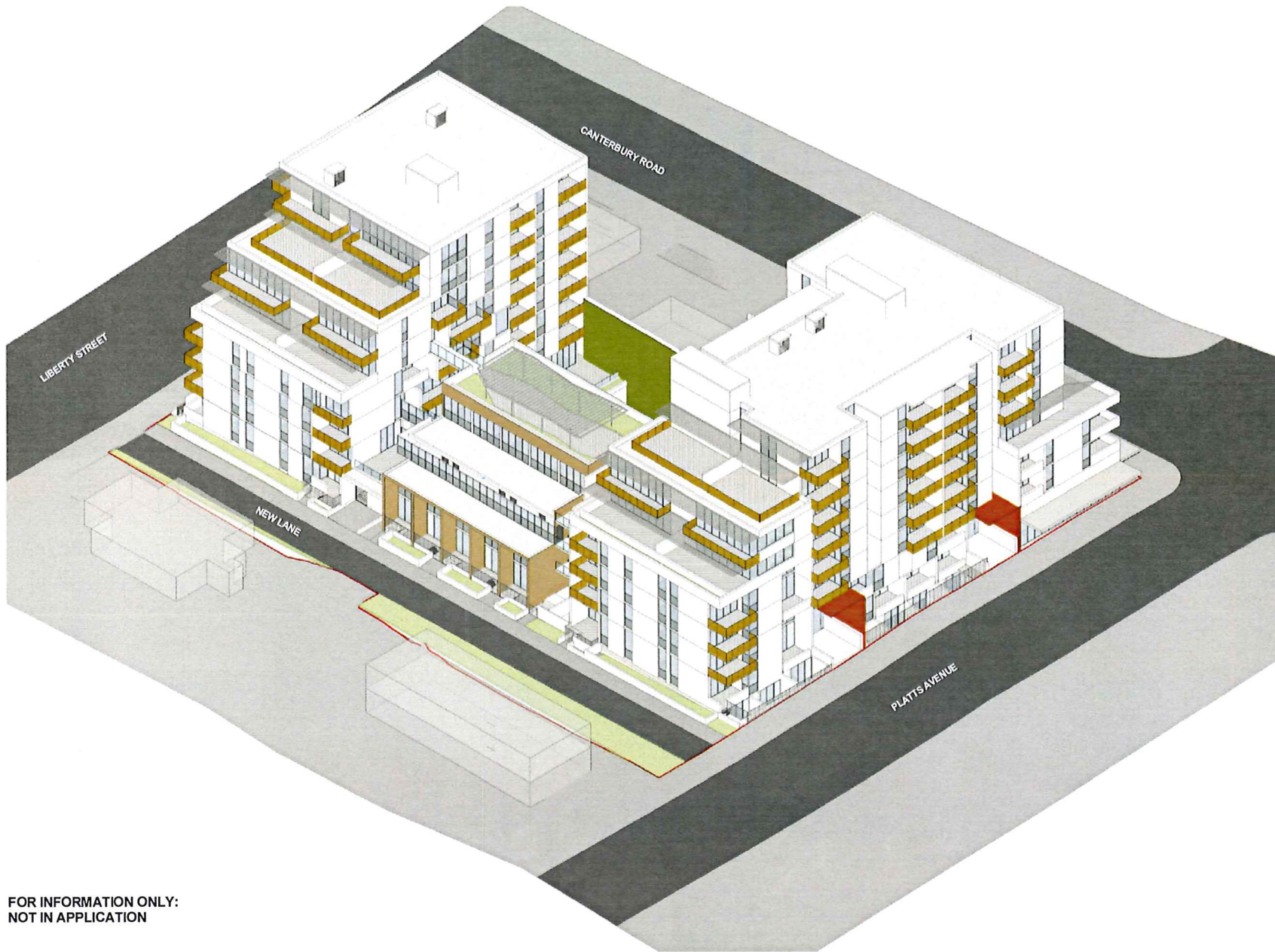
**stanic architects**

Level 27-28 Liverpool Street Brisbane QLD 4000  
T: 07 3208 2200  
www.stanic.com.au ABN 11 002 53 48 1

project MIXED USE DEVELOPMENT CONCEPT  
658-668 CANTERBURY ROAD,  
BELMORE (SITE B)  
drawing PERSPECTIVE VIEW 3

checked AH scale @A1 issue A  
drawn AUTHOR projectno 15 002 drawingno DA 703





FOR INFORMATION ONLY:  
NOT IN APPLICATION

issue	amendment	date	legend
A	DEVELOPMENT APPLICATION	27.11.13	

do not scale from drawings  
consult architect Stanic Architects (reg no 4480)

the layout shown and the areas noted on this drawing are indicative only. layouts are to be read in conjunction with floor plans, elevations & sections.



client

HOLT POINT PTY LTD  
c/o STATEWIDE PLANNING

scale bar

**stanic architects**

Level 2/24 Liverpool Street East Sydney NSW 2019  
T 02 9 355 3728  
www.stanic.com.au ABN 11 002 31 411

checked

AH

scale

@A1

issue

A

drawn

Author

project no

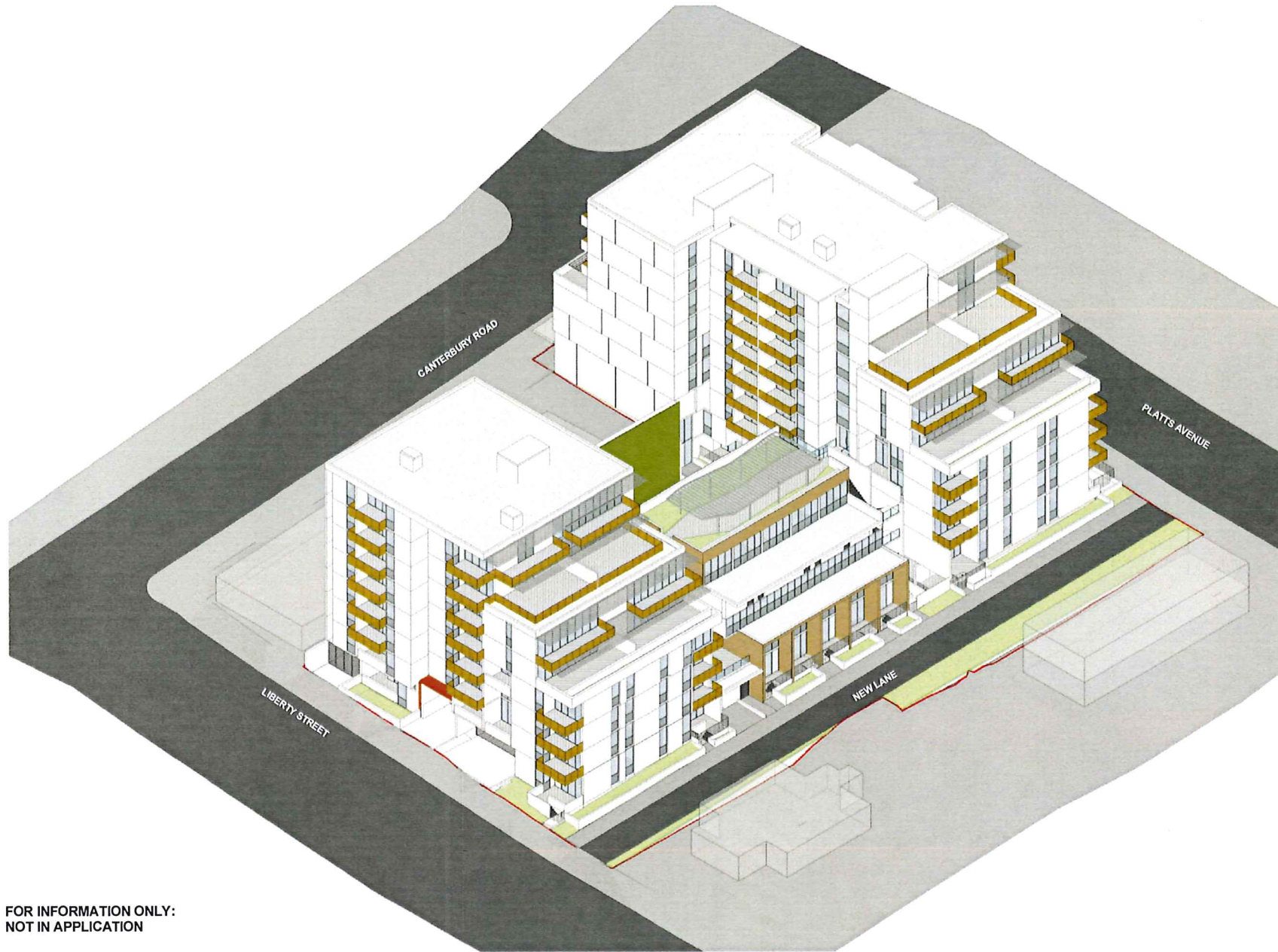
15 002

drawing no

DA 704

project

MIXED USE DEVELOPMENT BELMORE  
642-644 CANTERBURY RD 1-3 PLATTS  
AVE & 2A, 2B, 2C & 2D LIBERTY ST  
SOUTH EASTERN AERIAL VIEW



FOR INFORMATION ONLY:  
NOT IN APPLICATION

issue	amendment	date	legend
A	DEVELOPMENT APPLICATION	27.11.13	

do not scale from drawings.  
consult architect Stanic architects (tag no 4480)

the legend shown and the areas noted on this drawing are indicative only. layouts are to be read in conjunction with floor plans, elevations & sections.



client  
**HOLT POINT PTY LTD**  
c/o STATEWIDE PLANNING

**stanic architects**

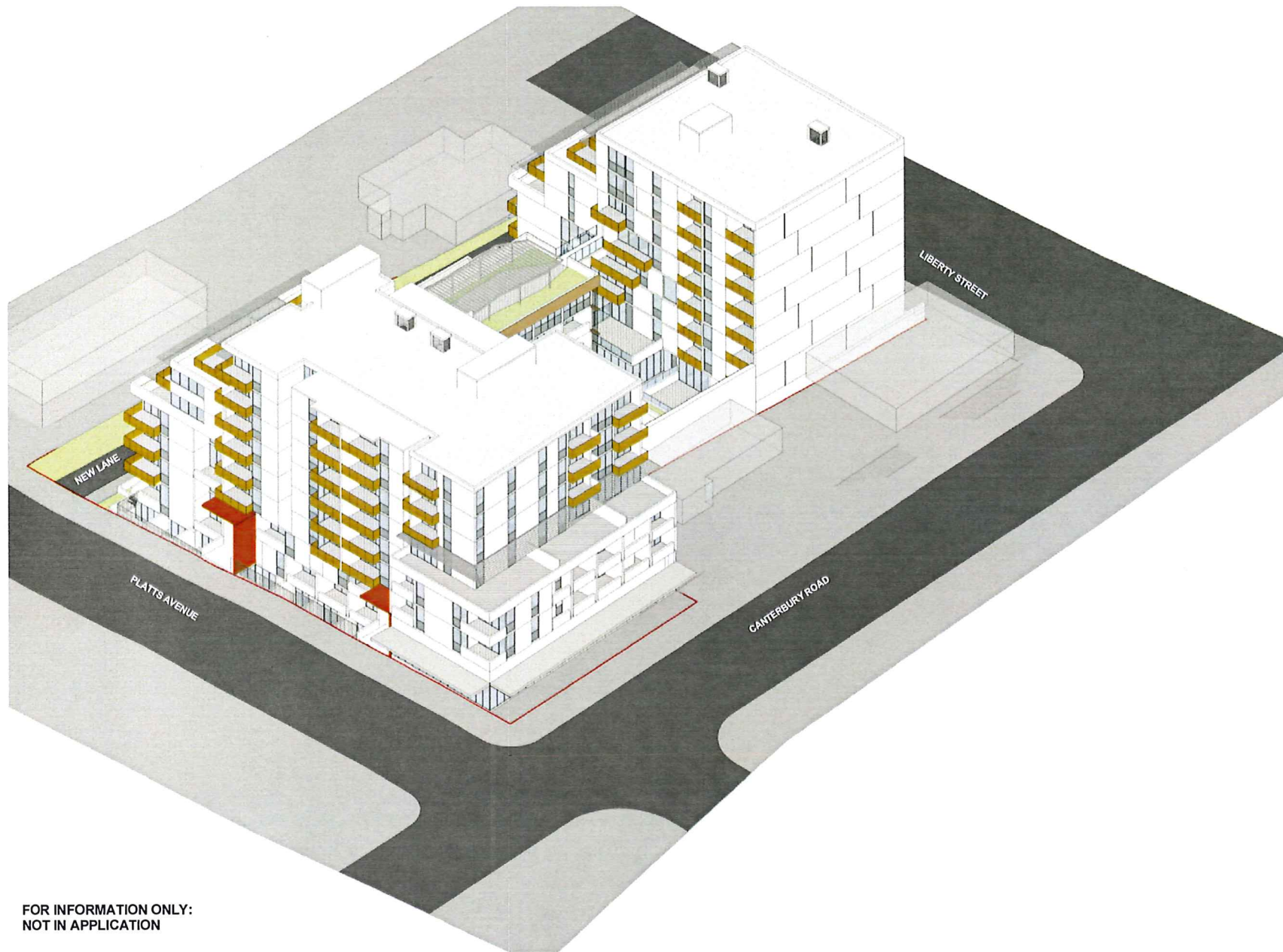
Level 22 23 Liverpool Street, Goldsboro NSW 2010  
T 61 2 9615 1500  
www.stanic.com.au ABN 1130253481

project  
**MIXED USE DEVELOPMENT BELMORE**  
642-644 CANTERBURY RD 1-3 PLATTS  
AVE & 2A, 2B, 2C & 2D LIBERTY ST  
drawing  
**SOUTH WESTERN AERIAL VIEW**

checked AH scale @A1 issue A  
drawn Author project 15 002 drawing no DA 705

scale bar





FOR INFORMATION ONLY:  
NOT IN APPLICATION

issue	amendment	date	legend
A	DEVELOPMENT APPLICATION	27.11.15	

do not scale from drawings.  
consult architect Stanic Architects (reg no 4480)

the legend shown and the notes noted on this drawing are indicative only. layouts are to be read in conjunction with floor plans, elevations & sections.



client  
**HOLT POINT PTY LTD**  
c/o STATEWIDE PLANNING

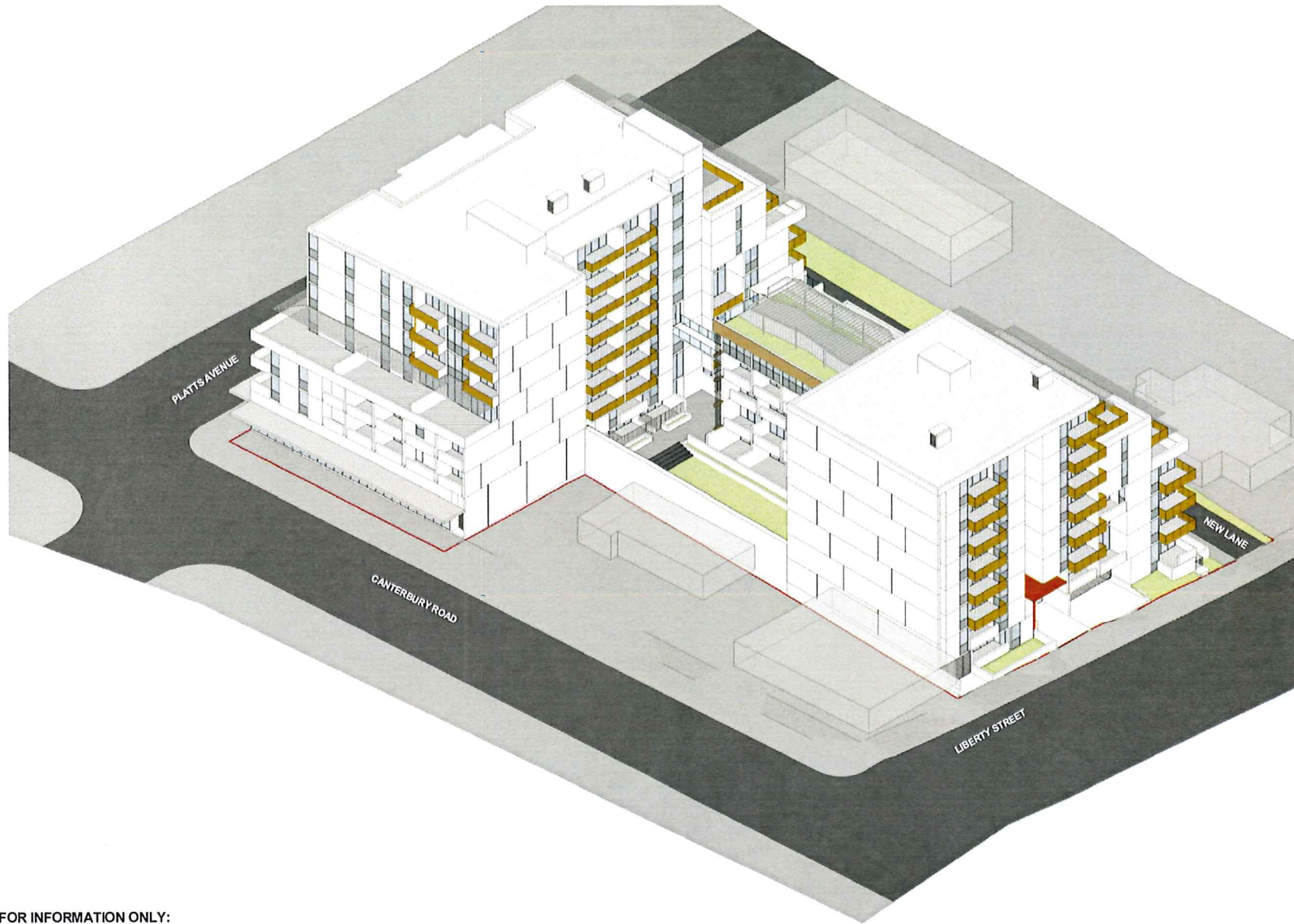
**stanic architects**

Level 2/20 Liverpool Street Sydney NSW 2010  
T 61 2 926 2288  
www.stanic.com.au ABN 11 0023 461

propid  
**MIXED USE DEVELOPMENT BELMORE**  
642-644 CANTERBURY RD 1-3 PLATTS  
AVE & 2A, 2B, 2C & 2D LIBERTY ST  
dis whg  
**NORTH EASTERN AERIAL VIEW**

checked AH scale @A1 issue A  
drawn AUTHOR projectno 15 002 dis whg no DA 706

scale bar



FOR INFORMATION ONLY:  
NOT IN APPLICATION

issue	amendment	date	log no
A	DEVELOPMENT APPLICATION	27.11.12	

do not scale from drawings.  
consult a certified drafter (reg no 4480)

the layout shown and the axes noted on this drawing are indicative only. layouts are to be read in conjunction with floor plans, elevations & sections.



client  
**HOLT POINT PTY LTD**  
c/o STATEWIDE PLANNING

**stanisic architects**

Level 2/24 Liverpool Street Sydney NSW 2000  
T 61 2 9252 2700  
www.stanisic.com.au ABN 11 002 53 46 1

project  
**MIXED USE DEVELOPMENT BELMORE**  
642-644 CANTERBURY RD 1-3 PLATTS  
AVE & 2A, 2B, 2C & 2D LIBERTY ST  
drawing  
**NORTH WESTERN AERIAL VIEW**

checked	AH	scale	@A1	issue	A
drawn	Author	project no	15 002	drawing no	DA 707

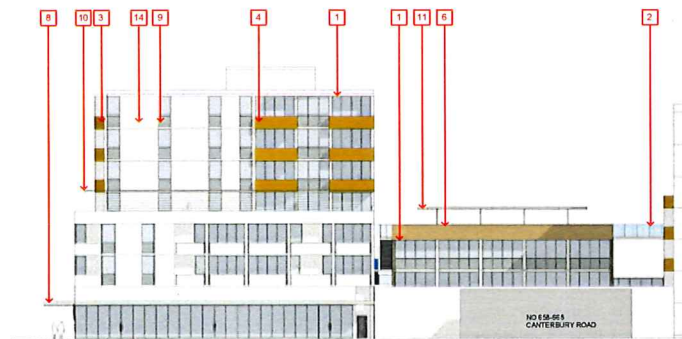




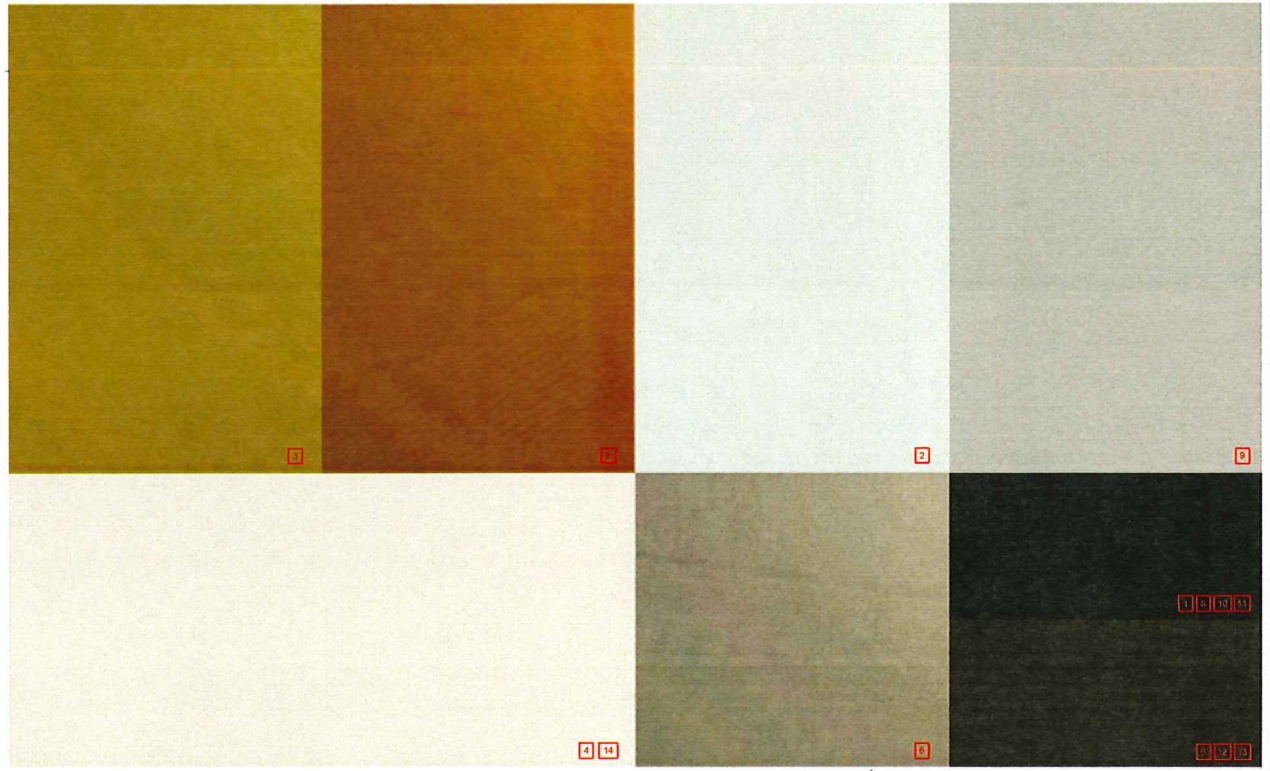
WEST ELEVATION (LIBERTY STREET)



EAST ELEVATION (PLATTS AVENUE)



NORTH ELEVATION (CANTERBURY ROAD)



**EXTERNAL MATERIALS, FINISHES & COLOUR BOARD**  
 1-2-143 CANTERBURY ROAD, 1-3 PLATTS AVE & 24, 28, 20 & 20 LIBERTY ST, BELMORE

- |   |   |   |
|---|---|---|
| <ul style="list-style-type: none"> <li>1 ALUMINIUM FRAMED WINDOWS POWDER COATED FINISH INTERPOLUX ULTRIVA ASTEROID PEARL MATT (ALP)</li> <li>2 BALUSTRADE ALUMINIUM POST AND RAIL WITH GLASS PANEL POWDER COATED FINISH (BAL1)</li> <li>3 BALUSTRADE ALUMINIUM POST AND RAIL WITH PERFORATED METAL PANEL POWDER COATED FINISH GOLD METALLIC (BAL3)</li> <li>4 CONCRETE PAINT FINISH DULUX BERSHIRE WHITE (BAL3)</li> <li>5 METAL PICKETS POWDER COATED FINISH DULUX JASPER MATT (BAL4)</li> </ul> | <ul style="list-style-type: none"> <li>6 EXTERNAL CLADDING ALUCOBOND BROKE METALLIC (MCP1)</li> <li>7 EXTERNAL CLADDING ALUCOBOND NATURAL COPPER (MCP2)</li> <li>8 STEEL FASOLA PAINT FINISH COLOR TO MATCH ASTEROID PEARL MATT (FAS)</li> <li>9 GLASS SPANDREL COLOURBACK FINISH DULUX SILKWOOL (GL)</li> <li>10 ALUMINIUM LOUVRES POWDER COATED FINISH INTERPOLUX ULTRIVA ASTEROID PEARL MATT (LV1)</li> <li>11 METAL FRAMES PERGOLA POWDER COATED FINISH INTERPOLUX ULTRIVA ASTEROID PEARL MATT (PER)</li> </ul> | <ul style="list-style-type: none"> <li>12 PERFORATED STEEL SLATS COLOURBACK FINISH ELECTROBAMMERING CHAMPAGNE FLAT (RCL)</li> <li>13 PERFORATED ROLLER SHUTTER COLOURBACK FINISH ELECTROBAMMERING CHAMPAGNE FLAT (RS)</li> <li>14 PRECAST CONCRETE PANELS PAINT FINISH WHITE (CCP)</li> </ul> |
|---|---|---|