



Connects to existing fence

P2

P1


**LEGEND**

-  20m Outer Protection Zone Buffer to EPZ
-  Development Footprint
-  Precinct Boundary
-  Kings Forest Boundary

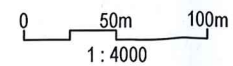
**PROPOSED FENCING PLAN**

-  Permanent Koala exclusion fencing

**KOALA HABITAT THAT WILL REMAIN AS HABITAT AFTER DEVELOPMENT**

-  Secondary (A) Koala habitat to remain after development

PRECINCT 1 - RETAINED KOALA HABITAT & KOALA OFFSETS		
Koala Habitat to be Retained (Ha)	Primary Koala Habitat	0
	Secondary (A) Koala Habitat	4.96
	Secondary (B) Koala Habitat	0
Koala Offsets (Ha)	Dry Primary Koala Habitat	0
	Dry Primary Koala Habitat Plus Dry Heath	0
	Wet Primary Koala Habitat	0
	Wet Primary Koala Habitat Plus Wet Heath	0
	Wet Secondary Koala Habitat	0



SOURCE: JWA KPOM (2018) & March to August 2018 Site Investigations; Near Map 08/08/18 Aerial  
 SCALE: 1:4000 @ A3

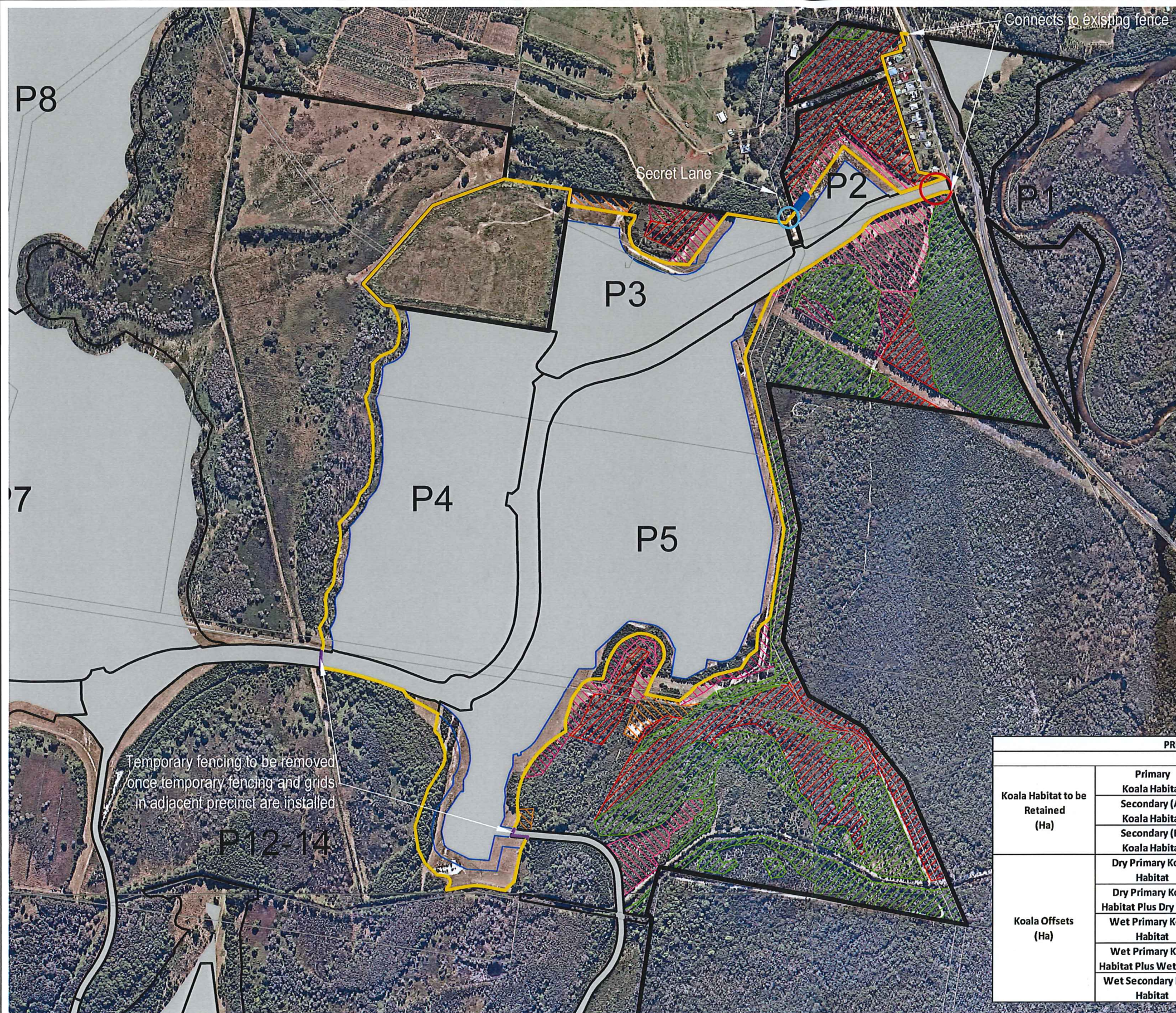
JWA PTY LTD  
 Ecological Consultants

CLIENT  
 Project 28 Pty Ltd  
 PROJECT  
 Koala Plan of Management  
 Kings Forest  
 Melaleuca Drive, Duranbah, NSW  
 Shire of Tweed

FIGURE 32

PREPARED: BW  
 DATE: 28 September 2018  
 FILE: N97017\_KPOM Precincts.dwg

TITLE  
 PRE-CONSTRUCTION  
 KOALA  
 MANAGEMENT ACTIONS  
 - PRECINCT 1



**LEGEND**

- 20m Outer Protection Zone Buffer to EPZ
- Development Footprint
- Precinct Boundary
- Kings Forest Boundary

**PROPOSED FENCING PLAN**

- Temporary Koala exclusion fencing
- Permanent Koala exclusion fencing
- Indicative underpass location
- Permanent grid
- Approximate location of gate

**KOALA HABITAT THAT WILL REMAIN AS HABITAT AFTER DEVELOPMENT**

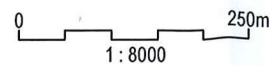
- Primary Koala habitat to remain after development
- Secondary (A) Koala habitat to remain after development

**KOALA COMPENSATORY HABITAT**

- Dry primary Koala habitat
- Dry primary Koala habitat plus dry heath
- Wet primary Koala habitat
- Wet secondary Koala habitat

**PRECINCT 2-5 - RETAINED KOALA HABITAT & KOALA OFFSETS**

		Precinct 2	Precinct 3	Precinct 4	Precinct 5
<b>Koala Habitat to be Retained (Ha)</b>	<b>Primary Koala Habitat</b>	4.37	0.51	0	8.03
	<b>Secondary (A) Koala Habitat</b>	0.31	0	0	19.30
	<b>Secondary (B) Koala Habitat</b>	0	0	0	0
	<b>Dry Primary Koala Habitat</b>	0.32	0.59	0	2.46
<b>Koala Offsets (Ha)</b>	<b>Dry Primary Koala Habitat Plus Dry Heath</b>	0.73	0	0	3.99
	<b>Wet Primary Koala Habitat</b>	0.00	0.36	0	0.68
	<b>Wet Primary Koala Habitat Plus Wet Heath</b>	0	0	0	0
	<b>Wet Secondary Koala Habitat</b>	0	0	0	0.14
	<b>Wet Secondary Koala Habitat</b>	0	0	0	0.14



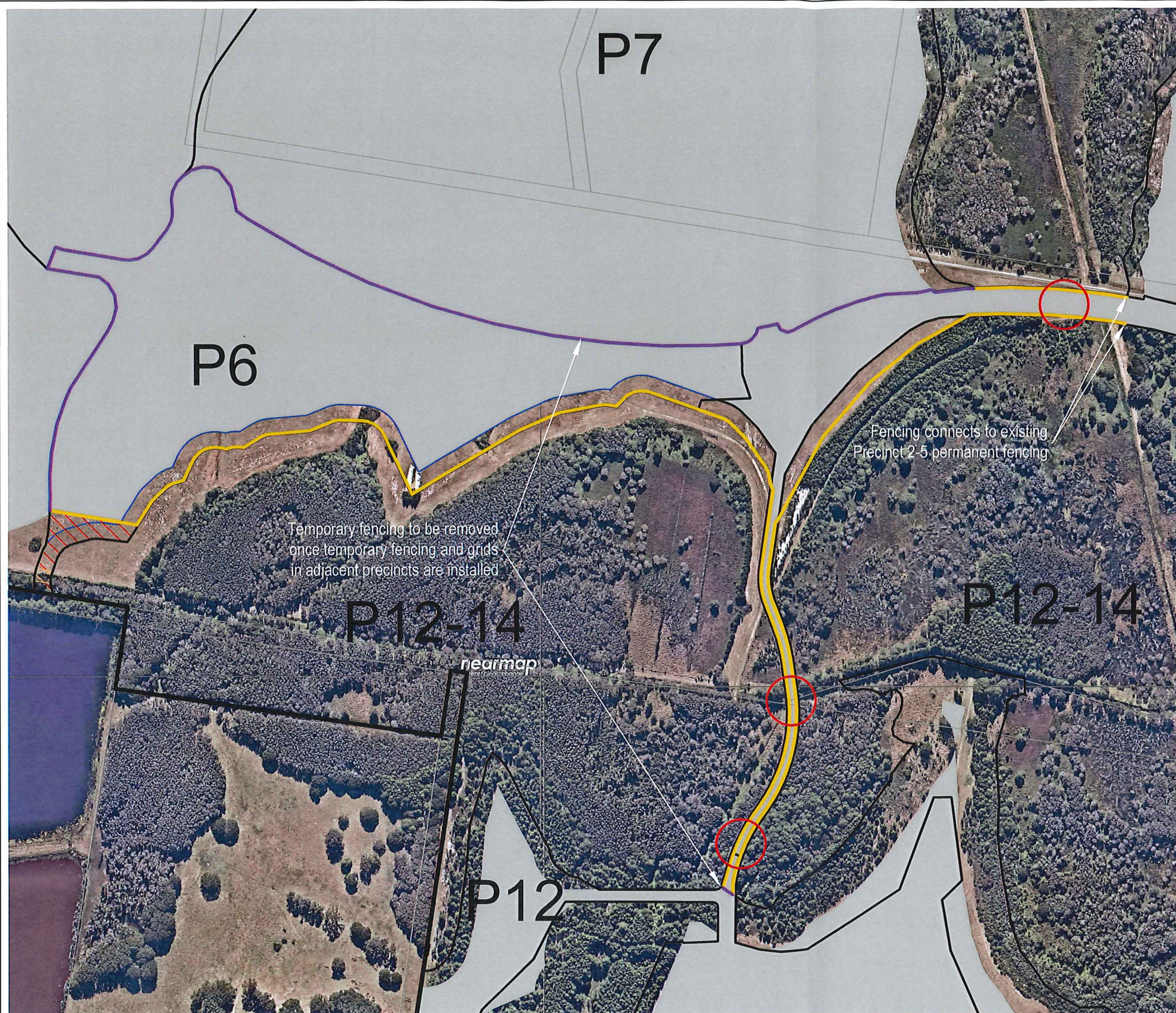
SOURCE: JWA KPOM (2018) & March to August 2018 Site Investigations; Near Map 08/08/18 Aerial  
 SCALE: 1 : 8000 @ A3

JWA PTY LTD  
 Ecological Consultants

CLIENT  
 Project 28 Pty Ltd  
 PROJECT  
 Koala Plan of Management  
 Kings Forest  
 Melaleuca Drive, Duranbah, NSW  
 Shire of Tweed

FIGURE 33B  
 PREPARED: BW  
 DATE: 28 September 2018  
 FILE: N97017\_KPOM Precincts.dwg

TITLE  
 POST-CONSTRUCTION  
 KOALA  
 MANAGEMENT ACTIONS  
 - PRECINCTS 2-5



**LEGEND**

- 20m Outer Protection Zone Buffer to EPZ
- Development Footprint
- Precinct Boundary
- Kings Forest Boundary

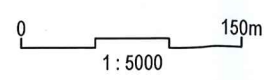
**PROPOSED FENCING PLAN**

- Temporary Koala exclusion fencing
- Permanent Koala exclusion fencing
- Indicative underpass location

**KOALA COMPENSATORY HABITAT**

- Dry primary Koala habitat within East-West Corridor
- Wet primary Koala habitat within East-West Corridor

PRECINCT 6 - RETAINED KOALA HABITAT & KOALA OFFSETS		
Koala Habitat to be Retained (Ha)	Primary Koala Habitat	0
	Secondary (A) Koala Habitat	0
	Secondary (B) Koala Habitat	0
Koala Offsets (Ha)	Dry Primary Koala Habitat	0.41
	Dry Primary Koala Habitat Plus Dry Heath	0
	Wet Primary Koala Habitat	0.03
	Wet Primary Koala Habitat Plus Wet Heath	0
	Wet Secondary Koala Habitat	0



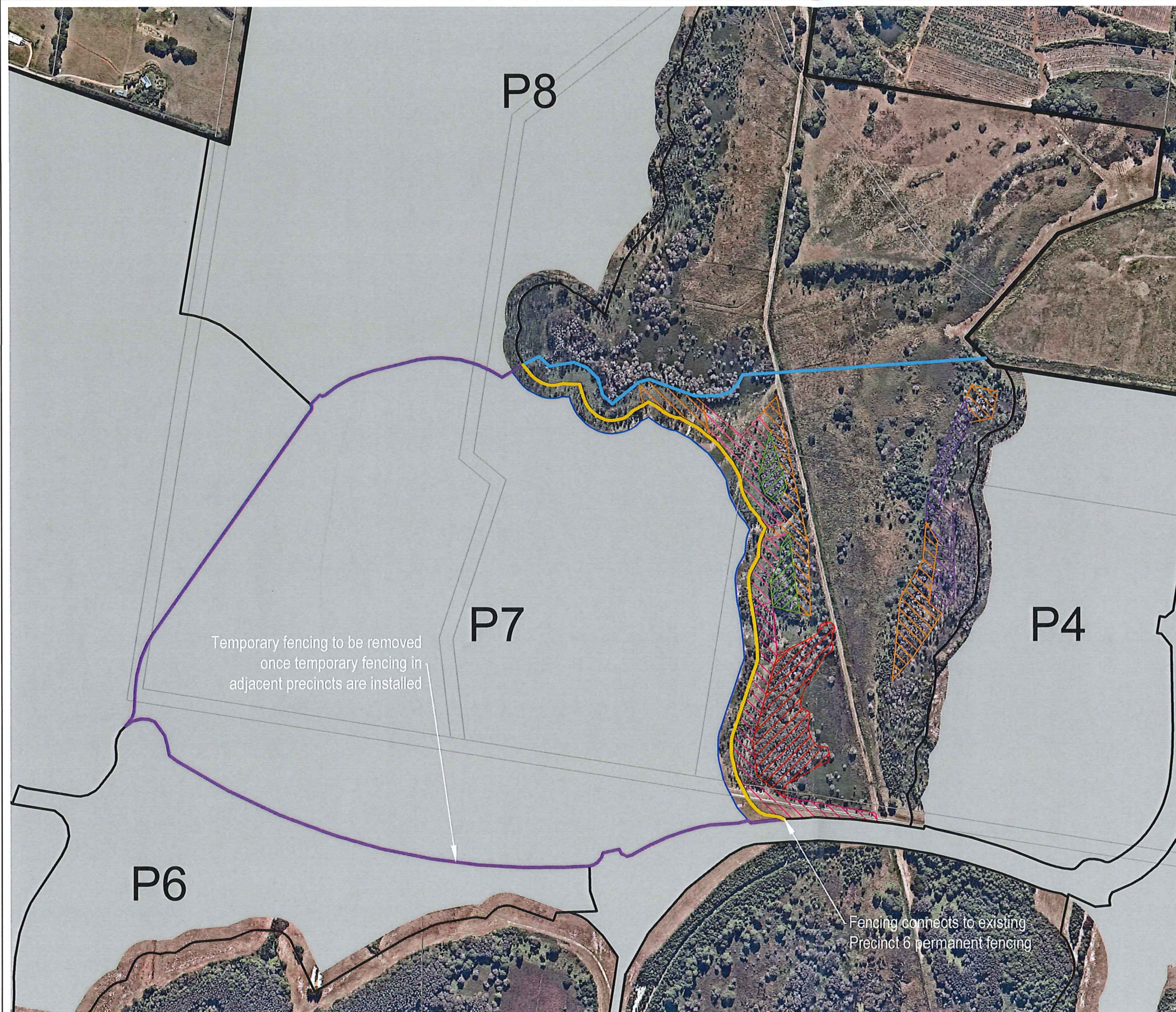
SOURCE: JWA KPOM (2018) & March to August 2018 Site Investigations; Near Map 08/08/18 Aerial  
 SCALE: 1 : 5000 @ A3

**JWA PTY LTD**  
 Ecological Consultants

CLIENT  
 Project 28 Pty Ltd  
 PROJECT  
 Koala Plan of Management  
 Kings Forest  
 Melaleuca Drive, Duranbah, NSW  
 Shire of Tweed

FIGURE 34B  
 PREPARED: BW  
 DATE: 28 September 2018  
 FILE: N97017\_KPOM Precincts.dwg

TITLE  
 POST-CONSTRUCTION  
 KOALA  
 MANAGEMENT ACTIONS  
 - PRECINCT 6



**LEGEND**

- 20m Outer Protection Zone Buffer to EPZ
- Development Footprint
- Precinct Boundary
- Kings Forest Boundary

**PROPOSED FENCING PLAN**

- Temporary Koala exclusion fencing
- Permanent Koala exclusion fencing
- Arbitrary line for division of compensatory habitat only

**KOALA HABITAT THAT WILL REMAIN AS HABITAT AFTER DEVELOPMENT**

- Secondary (A) Koala habitat to remain after development

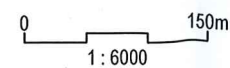
**KOALA COMPENSATORY HABITAT**

- Dry primary Koala habitat
- Dry primary Koala habitat plus dry heath
- Wet primary Koala habitat
- Wet secondary Koala habitat

Temporary fencing to be removed once temporary fencing in adjacent precincts are installed

Fencing connects to existing Precinct 6 permanent fencing

PRECINCT 7 - RETAINED KOALA HABITAT & KOALA OFFSETS		
Koala Habitat to be Retained (Ha)	Primary Koala Habitat	1.60
	Secondary (A) Koala Habitat	0.51
	Secondary (B) Koala Habitat	0
Koala Offsets (Ha)	Dry Primary Koala Habitat	1.26
	Dry Primary Koala Habitat Plus Dry Heath	1.05
	Wet Primary Koala Habitat	2.00
	Wet Primary Koala Habitat Plus Wet Heath	0
	Wet Secondary Koala Habitat	0.73



SOURCE: JWA KPOM (2018) & March to August 2018 Site Investigations; Near Map 08/08/18 Aerial

SCALE: 1 : 6000 @ A3

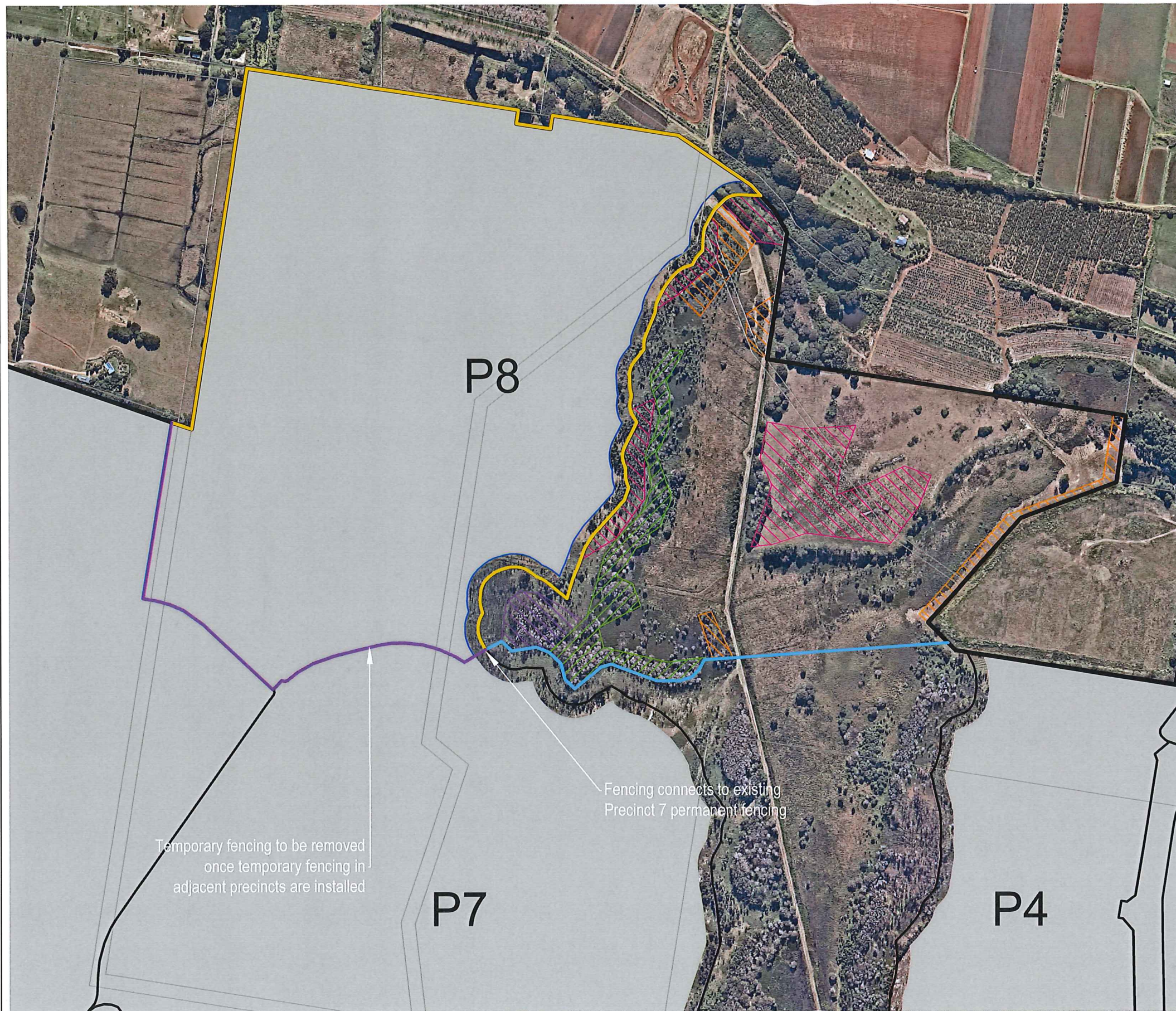
JWA PTY LTD  
Ecological Consultants

CLIENT  
Project 28 Pty Ltd  
PROJECT  
Koala Plan of Management  
Kings Forest  
Melaleuca Drive, Duranbah, NSW  
Shire of Tweed

FIGURE 35B

PREPARED: BW  
DATE: 28 September 2018  
FILE: N97017\_KPOM Precincts.dwg

TITLE  
POST-CONSTRUCTION  
KOALA  
MANAGEMENT ACTIONS  
- PRECINCT 7



**LEGEND**

- 20m Outer Protection Zone Buffer to EPZ
- Development Footprint
- Precinct Boundary
- Kings Forest Boundary

**PROPOSED FENCING PLAN**

- Temporary Koala exclusion fencing
- Permanent Koala exclusion fencing
- Arbitrary line for division of compensatory habitat only

**KOALA HABITAT THAT WILL REMAIN AS HABITAT AFTER DEVELOPMENT**

- Secondary (A) Koala habitat to remain after development

**KOALA COMPENSATORY HABITAT**

- Dry primary Koala habitat
- Wet primary Koala habitat
- Wet secondary Koala habitat

PRECINCT 8 - RETAINED KOALA HABITAT & KOALA OFFSETS		
<b>Koala Habitat to be Retained (Ha)</b>	<b>Primary Koala Habitat</b>	0
	<b>Secondary (A) Koala Habitat</b>	2.14
	<b>Secondary (B) Koala Habitat</b>	0
<b>Koala Offsets (Ha)</b>	<b>Dry Primary Koala Habitat</b>	4.25
	<b>Dry Primary Koala Habitat Plus Dry Heath</b>	0
	<b>Wet Primary Koala Habitat</b>	1.72
	<b>Wet Primary Koala Habitat Plus Wet Heath</b>	0
	<b>Wet Secondary Koala Habitat</b>	0.72

0 150m  
1: 6000

SOURCE: JWA KPOM (2018) & March to August 2018 Site Investigations; Near Map 08/08/18 Aerial

SCALE: 1: 6000 @ A3

JWA PTY LTD  
Ecological Consultants

CLIENT  
Project 28 Pty Ltd  
PROJECT  
Koala Plan of Management  
Kings Forest  
Melaleuca Drive, Duranbah, NSW  
Shire of Tweed

FIGURE 36B

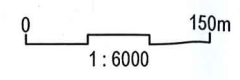
PREPARED: BW  
DATE: 28 September 2018  
FILE: N97017\_KPOM Precincts.dwg

TITLE  
POST-CONSTRUCTION  
KOALA  
MANAGEMENT ACTIONS  
- PRECINCT 8



- LEGEND**
- 20m Outer Protection Zone Buffer to EPZ
  - Development Footprint
  - Precinct Boundary
  - Kings Forest Boundary
- PROPOSED FENCING PLAN**
- Temporary Koala exclusion fencing
  - Permanent Koala exclusion fencing
- KOALA COMPENSATORY HABITAT**
- Dry primary Koala habitat
  - Wet primary Koala habitat

PRECINCT 9 - RETAINED KOALA HABITAT & KOALA OFFSETS		
Koala Habitat to be Retained (Ha)	Primary Koala Habitat	0
	Secondary (A) Koala Habitat	0
	Secondary (B) Koala Habitat	0
Koala Offsets (Ha)	Dry Primary Koala Habitat	0.72
	Dry Primary Koala Habitat Plus Dry Heath	0
	Wet Primary Koala Habitat	0.36
	Wet Primary Koala Habitat Plus Wet Heath	0
	Wet Secondary Koala Habitat	0

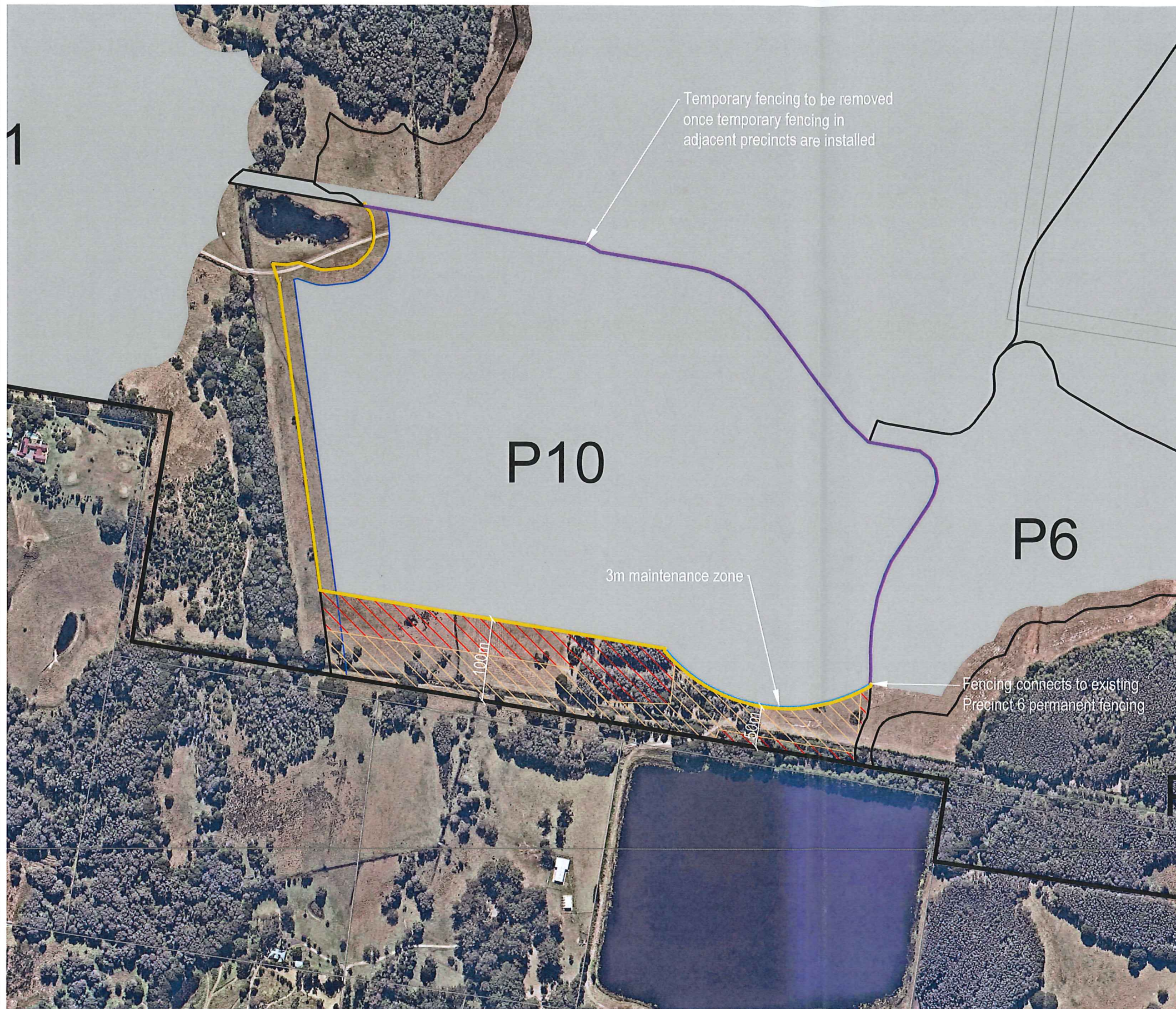


SOURCE: JWA KPOM (2018) & March to August 2018 Site Investigations; Near Map 08/08/18 Aerial  
 SCALE: 1:6000 @ A3  
 JWA PTY LTD  
 Ecological Consultants

CLIENT  
 Project 28 Pty Ltd  
 PROJECT  
 Koala Plan of Management  
 Kings Forest  
 Melaleuca Drive, Duranbah, NSW  
 Shire of Tweed

FIGURE 37B  
 PREPARED: BW  
 DATE: 28 September 2018  
 FILE: N97017\_KPOM Precincts.dwg

TITLE  
 POST-CONSTRUCTION  
 KOALA  
 MANAGEMENT ACTIONS  
 - PRECINCT 9



**LEGEND**

- 20m Outer Protection Zone Buffer to EPZ
- Maintenance Zone - 3m
- Development Footprint
- Precinct Boundary
- Kings Forest Boundary

**PROPOSED FENCING PLAN**

- Temporary Koala exclusion fencing
- Permanent Koala exclusion fencing

**KOALA COMPENSATORY HABITAT**

- Dry primary Koala habitat within East-West Corridor
- Wet primary Koala habitat within East-West Corridor

PRECINCT 10 - RETAINED KOALA HABITAT & KOALA OFFSETS		
Koala Habitat to be Retained (Ha)	Primary Koala Habitat	0
	Secondary (A) Koala Habitat	0
	Secondary (B) Koala Habitat	0
Koala Offsets (Ha)	Dry Primary Koala Habitat	2.49
	Dry Primary Koala Habitat Plus Dry Heath	0
	Wet Primary Koala Habitat	3.33
	Wet Primary Koala Habitat Plus Wet Heath	0
	Wet Secondary Koala Habitat	0

0 150m  
1 : 5000

SOURCE: JWA KPOM (2018) & March to August 2018 Site Investigations; Near Map 08/08/18 Aerial

SCALE: 1 : 5000 @ A3

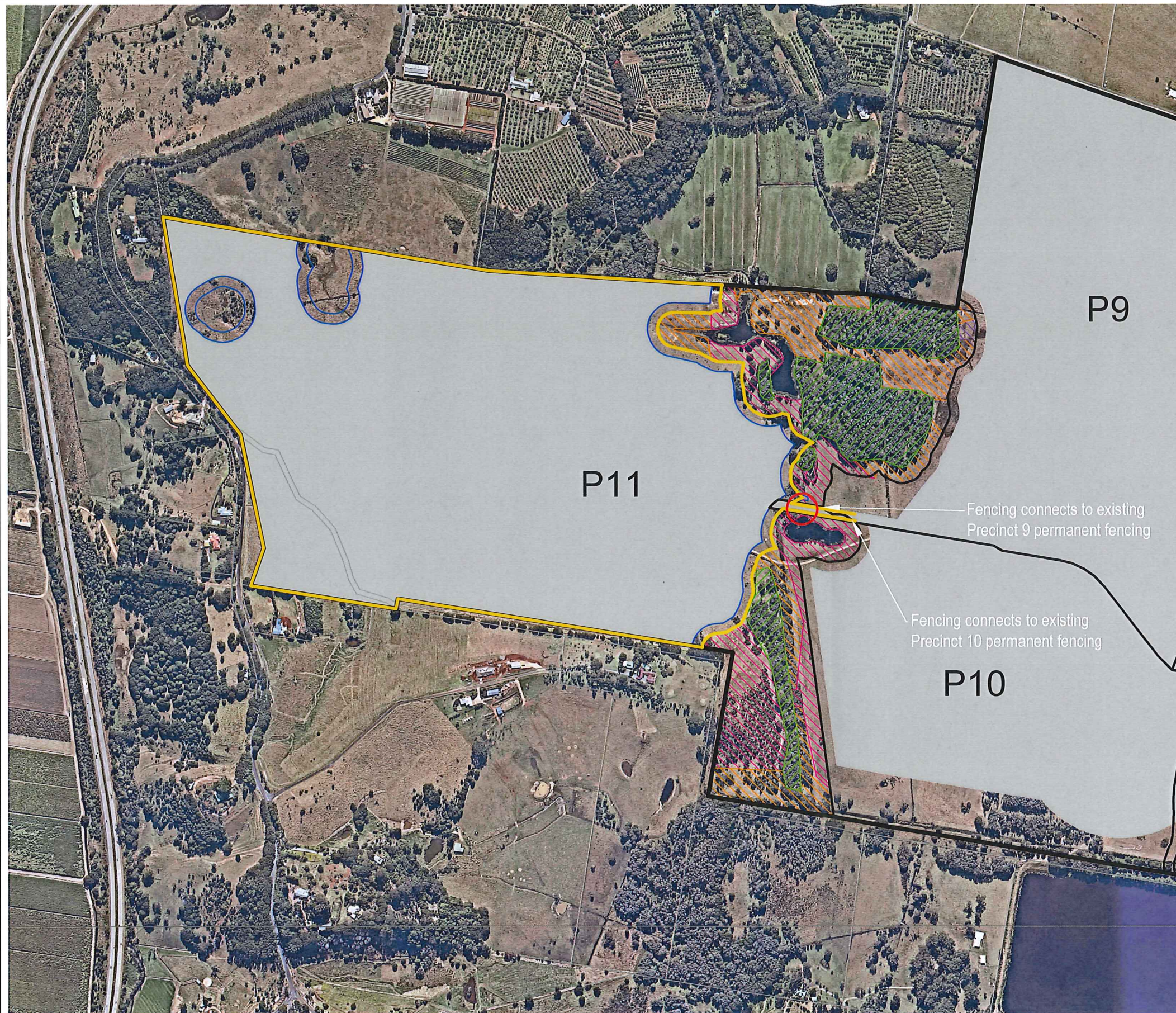
JWA PTY LTD  
Ecological Consultants

CLIENT  
Project 28 Pty Ltd  
PROJECT  
Koala Plan of Management  
Kings Forest  
Melaleuca Drive, Duranbah, NSW  
Shire of Tweed

FIGURE 38B

PREPARED: BW  
DATE: 28 September 2018  
FILE: N97017\_KPOM Precincts.dwg

TITLE  
POST-CONSTRUCTION  
KOALA  
MANAGEMENT ACTIONS  
- PRECINCT 10



**LEGEND**

- 20m Outer Protection Zone Buffer to EPZ
- Development Footprint
- Precinct Boundary
- Kings Forest Boundary

**PROPOSED FENCING PLAN**

- Permanent Koala exclusion fencing
- Indicative underpass location

**KOALA HABITAT THAT WILL REMAIN AS HABITAT AFTER DEVELOPMENT**

- Secondary (A) Koala habitat to remain after development

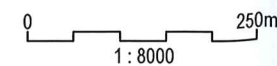
**KOALA COMPENSATORY HABITAT**

- Dry primary Koala habitat
- Wet primary Koala habitat
- Wet secondary Koala habitat

Fencing connects to existing Precinct 9 permanent fencing

Fencing connects to existing Precinct 10 permanent fencing

PRECINCT 11 - RETAINED KOALA HABITAT & KOALA OFFSETS		
Koala Habitat to be Retained (Ha)	Primary Koala Habitat	0
	Secondary (A) Koala Habitat	8.22
	Secondary (B) Koala Habitat	0
Koala Offsets (Ha)	Dry Primary Koala Habitat	7.22
	Dry Primary Koala Habitat Plus Dry Heath	0
	Wet Primary Koala Habitat	7.38
	Wet Primary Koala Habitat Plus Wet Heath	0
	Wet Secondary Koala Habitat	0.13



SOURCE: JWA KPOM (2018) & March to August 2018 Site Investigations; Near Map 08/08/18 Aerial

SCALE: 1:8000 @ A3

JWA PTY LTD  
Ecological Consultants

CLIENT  
Project 28 Pty Ltd  
PROJECT  
Koala Plan of Management  
Kings Forest  
Melaleuca Drive, Duranbah, NSW  
Shire of Tweed

FIGURE 39B

PREPARED: BW  
DATE: 28 September 2018  
FILE: N97017\_KPOM Precincts.dwg

TITLE  
POST-CONSTRUCTION  
KOALA  
MANAGEMENT ACTIONS  
- PRECINCT 11





**LEGEND**

- 20m Outer Protection Zone Buffer to EPZ
- Development Footprint
- Precinct Boundary
- Kings Forest Boundary

**PROPOSED FENCING PLAN**

- Permanent Koala exclusion fencing
- Indicative underpass location

**KOALA HABITAT THAT WILL REMAIN AS HABITAT AFTER DEVELOPMENT**

- Primary Koala habitat to remain after development
- Secondary (A) Koala habitat to remain after development
- Secondary (B) Koala habitat to remain after development

**KOALA COMPENSATORY HABITAT**

- Dry primary Koala habitat
- Dry primary Koala habitat plus dry heath
- Wet primary Koala habitat
- Wet primary Koala habitat plus wet heath
- Wet secondary Koala habitat

**PRECINCT 12-14 - RETAINED KOALA HABITAT & KOALA OFFSETS**

<b>Koala Habitat to be Retained (Ha)</b>	<b>Primary Koala Habitat</b>	17.08
	<b>Secondary (A) Koala Habitat</b>	127.24
	<b>Secondary (B) Koala Habitat</b>	12.21
<b>Koala Offsets (Ha)</b>	<b>Dry Primary Koala Habitat</b>	8.99
	<b>Dry Primary Koala Habitat Plus Dry Heath</b>	0.23
	<b>Wet Primary Koala Habitat</b>	14.64
	<b>Wet Primary Koala Habitat Plus Wet Heath</b>	0.23
	<b>Wet Secondary Koala Habitat</b>	1.61

0 500m  
1: 12 500

SOURCE: JWA KPOM (2018) & March to August 2018 Site Investigations; Near Map 08/08/18 Aerial

SCALE: 1: 12 500 @ A3

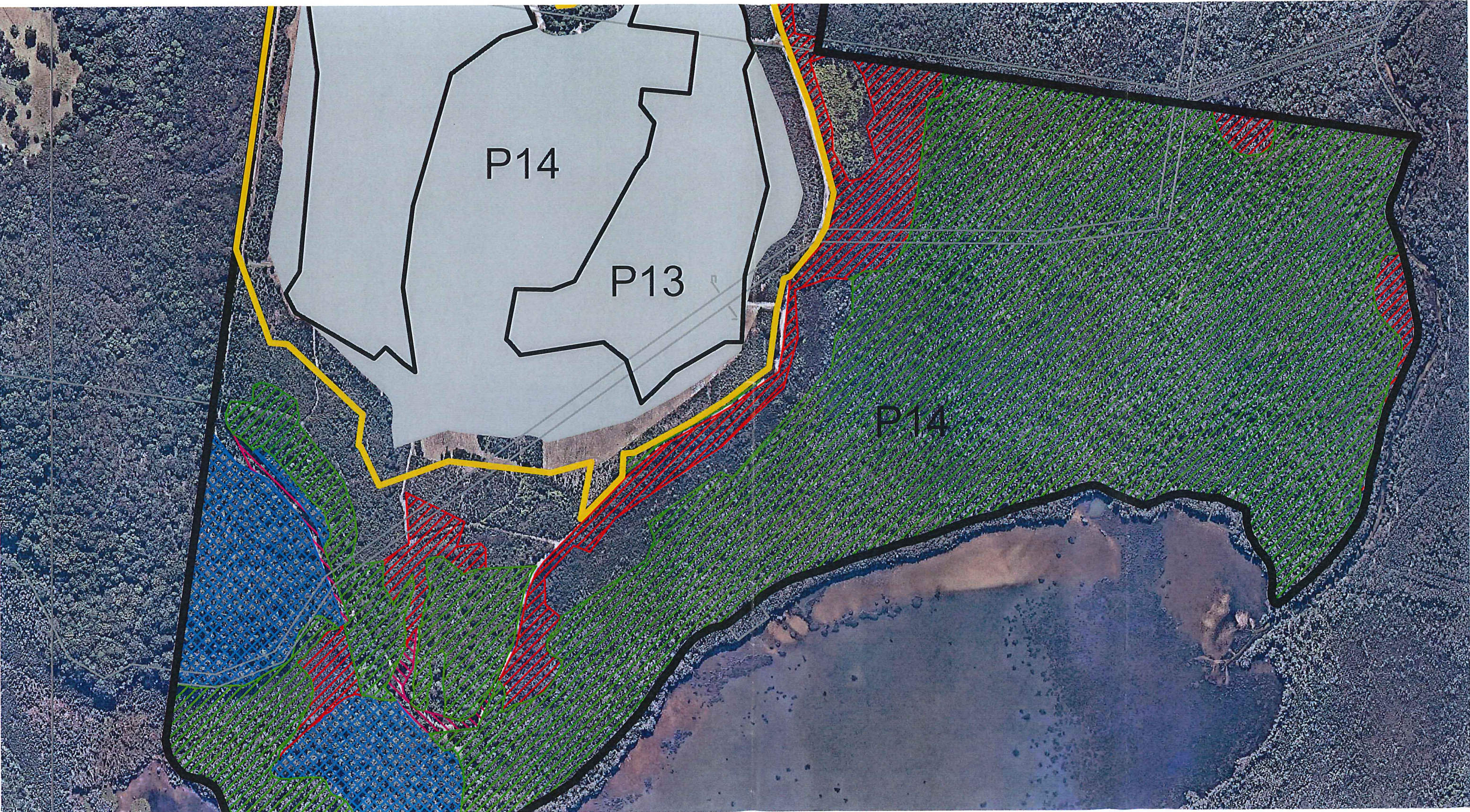
JWA PTY LTD  
Ecological Consultants

CLIENT  
Project 28 Pty Ltd  
PROJECT  
Koala Plan of Management  
Kings Forest  
Melaleuca Drive, Duranbah, NSW  
Shire of Tweed

FIGURE 40B

PREPARED: BW  
DATE: 28 September 2018  
FILE: N97017\_KPOM Precincts.dwg

TITLE  
POST-CONSTRUCTION  
KOALA  
MANAGEMENT ACTIONS  
- PRECINCTS 12-14



P6

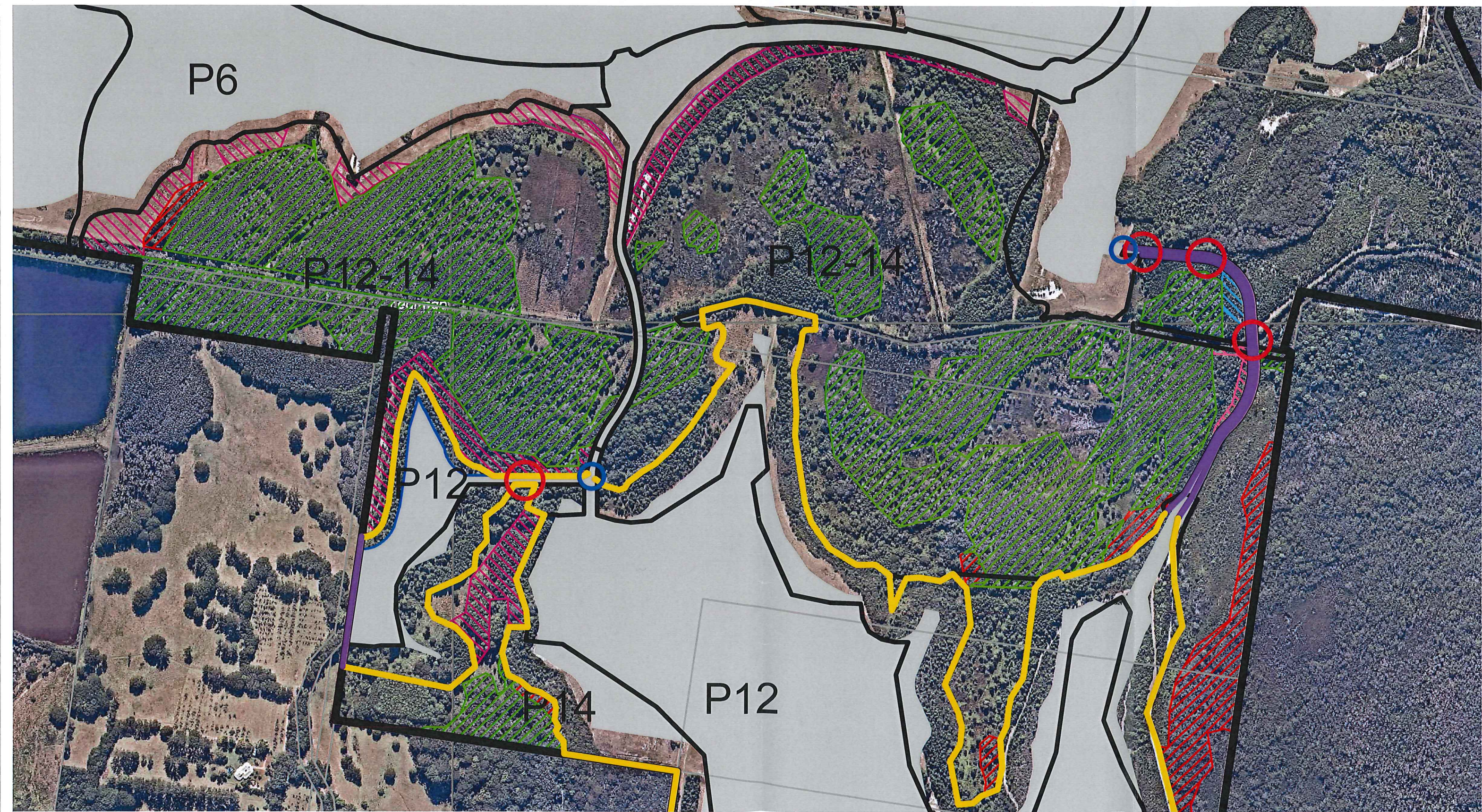
P12-14

P12-14

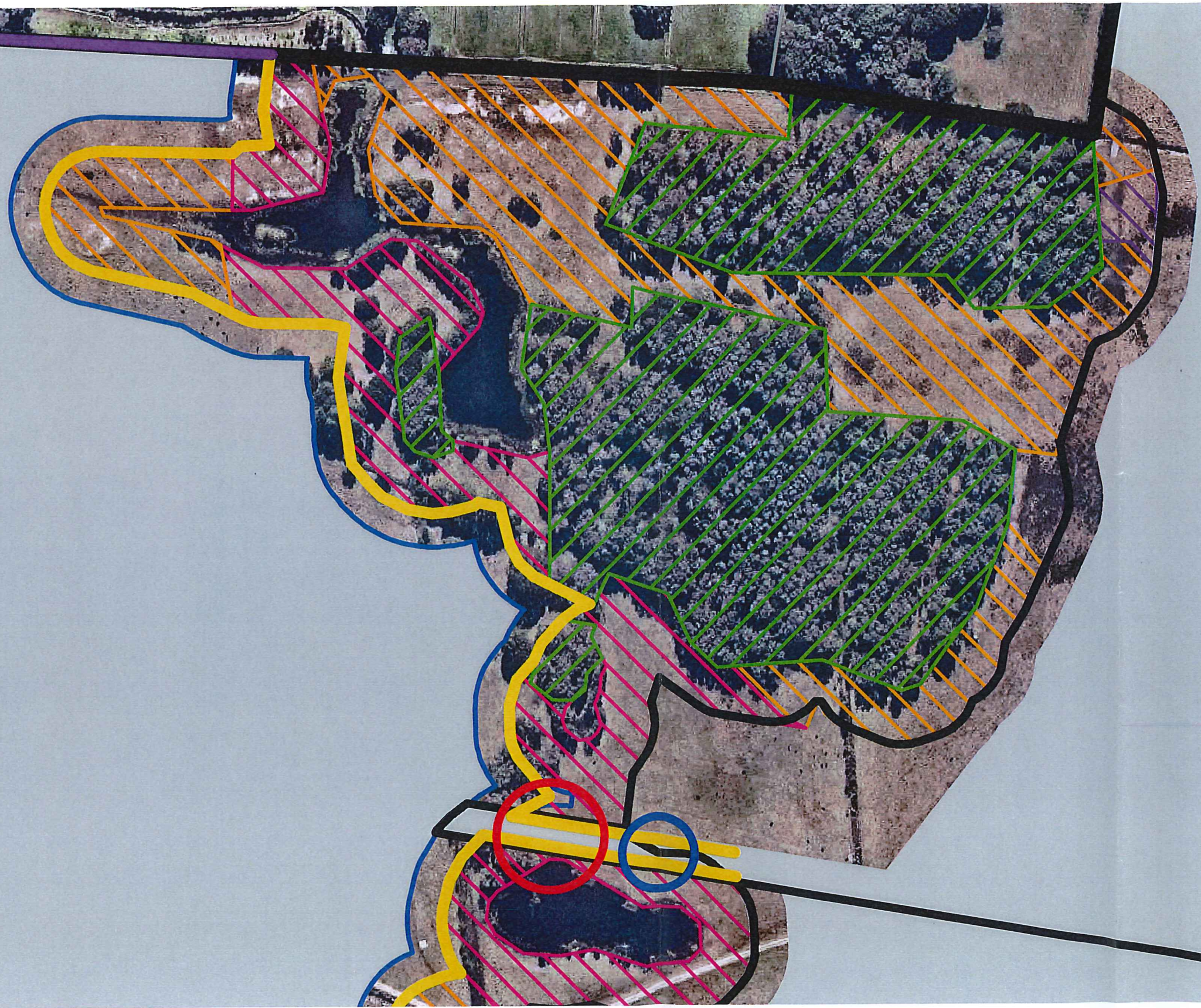
P12

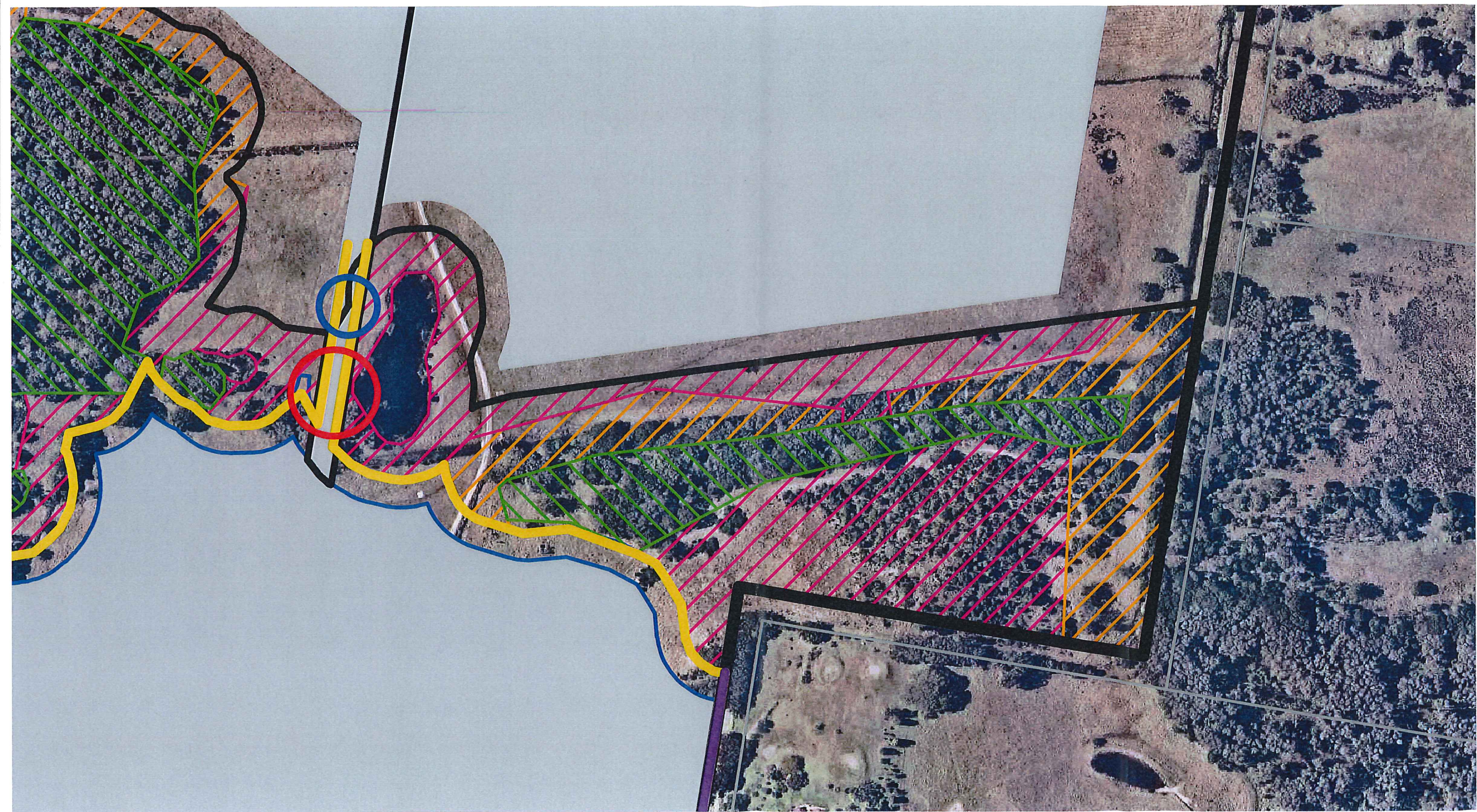
P14

P12



P11





3m maintenance zone

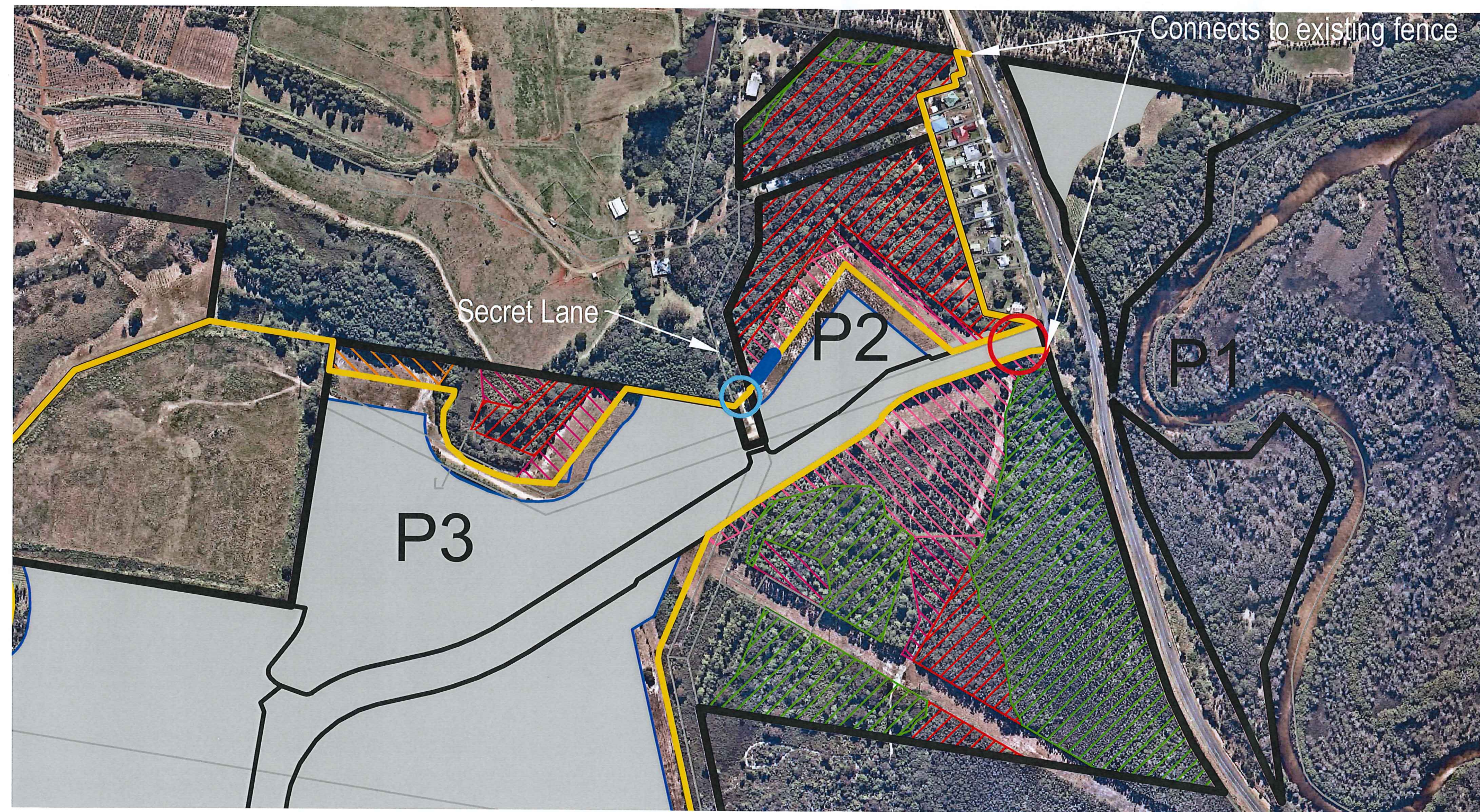
100m

50m





<b>Koala Habitat to be Retained (Ha)</b>	
<b>Koala Offsets</b>	<b>H</b>



Connects to existing fence





Secret Lane

P2






P1

P3

**LEGEND**

-  20m Out
-  Develop
-  Precinct
-  Kings Fo

**PROPOSED FENC**

-  Tempora
-  Permane
-  Indicative
-  Permane
-  Approxin

**KOALA HABITAT**

-  Primary I
-  Seconda