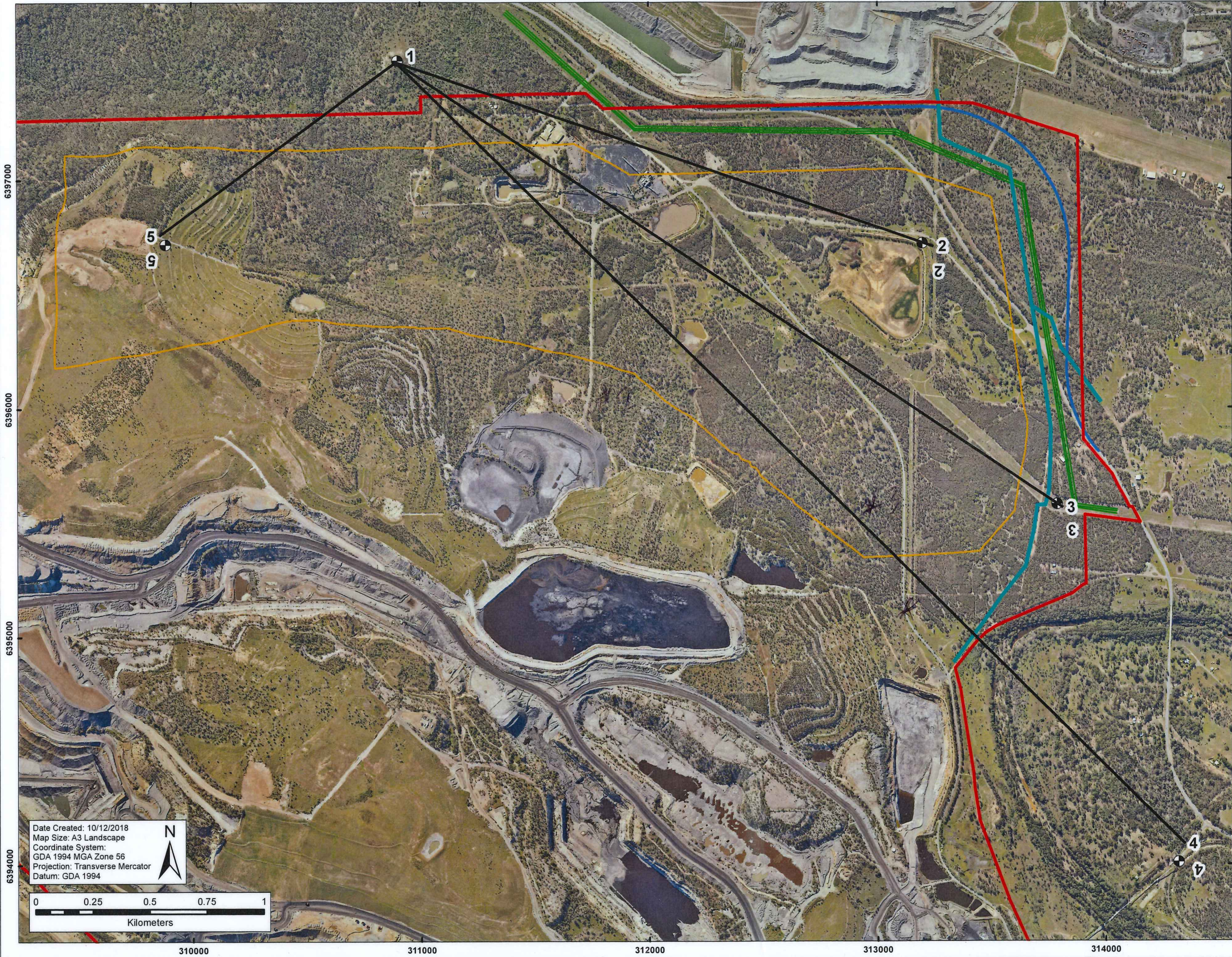


United Wambo Project

Trig Station

GLENCORE



- Legend
- UWJV Project Area_SSD 7142
 - United Open Cut Pit Shell
 - Proposed_66kV
 - Proposed 330kV
 - Proposed Golden Highway

1	Viewing Location
2	Dam 1 Wall
3	330kV Tower (Eastern Pit Extent)
4	Wambo Rail Loadout Bin
5	Existing Rehab (Western Pit Limit)

DISCLAIMER
Subject To Survey.
Glencore makes every effort to ensure the quality of the information available on this map. Before relying on the information on this map, users should carefully evaluate its accuracy, currency, completeness and relevance for their purposes, and should obtain any appropriate professional advice relevant to their particular circumstances. Glencore cannot guarantee and assumes no responsibility for the accuracy, currency or completeness of the information and by using this map you accept that Glencore has no liability for any loss or damage in any form whatsoever caused directly or indirectly from the use of this map.

DATA SOURCE
© NSW Department of Finance, Services & Innovation 2018
© NSW Resources & Geoscience (DRG) 2018
© Glencore 2018

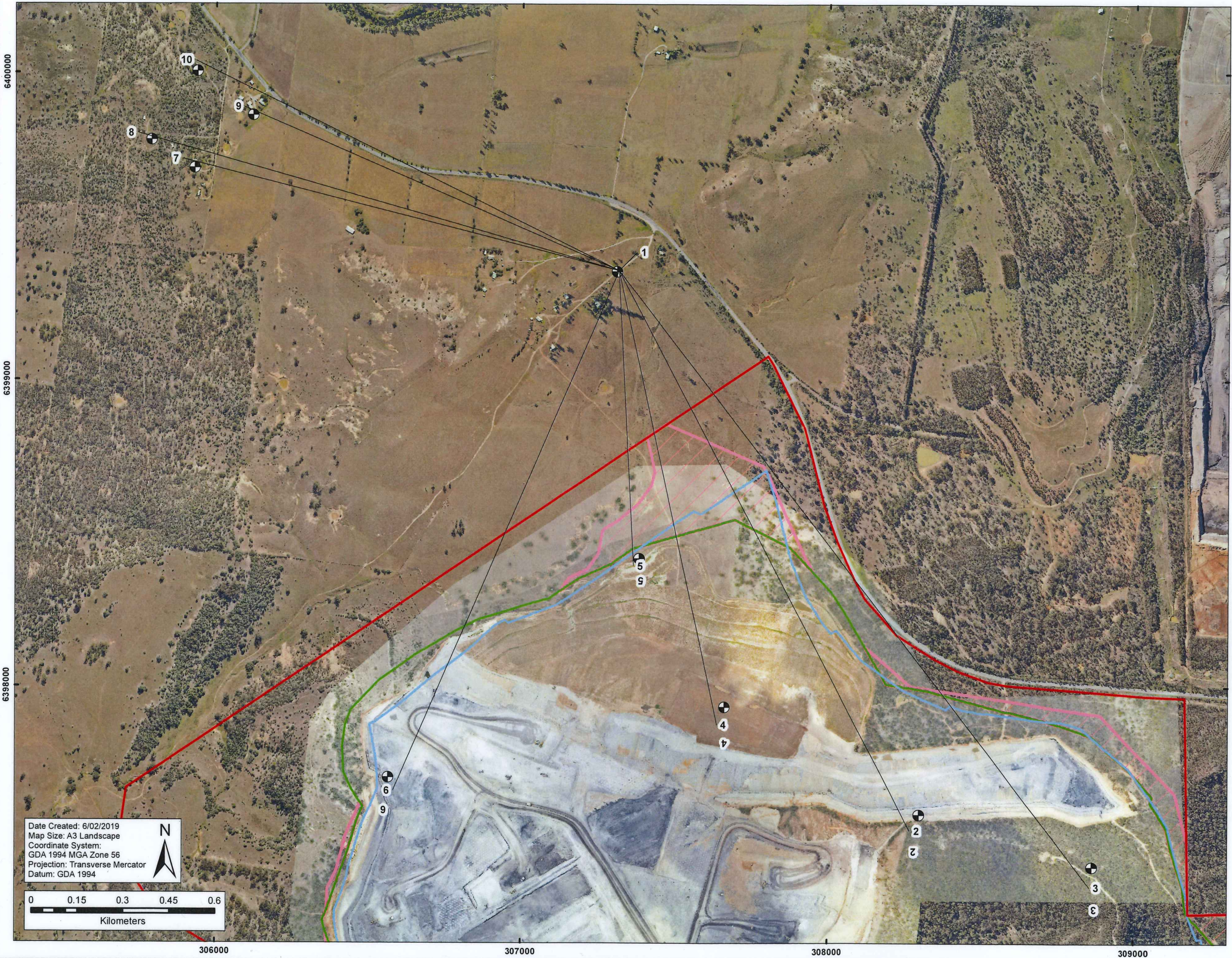
Date Created: 10/12/2018
Map Size: A3 Landscape
Coordinate System:
GDA 1994 MGA Zone 56
Projection: Transverse Mercator
Datum: GDA 1994



0 0.25 0.5 0.75 1
Kilometers

United Wambo Project
Montrose Property

GLENCORE

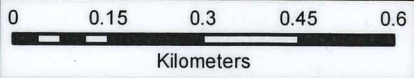


Legend

- UWJV Project Area_SSD 7142
- Wambo Open Cut Pit Shell
- Approved Wambo Disturbance Area
- Project Additional Disturbance Area

1	Viewing Location
2	Current Mine Highwall
3	Mining Area
4	East Lookout
5	West Lookout
6	Western Extent of Mine
7	Toe of Crest
8	Muller Property (Purchased by Project)
9	Northcote Property (Acquisition)
10	Elbourn Property (Purchased by Project)
11	Cooper Property (Acquisition)

Date Created: 6/02/2019
Map Size: A3 Landscape
Coordinate System:
GDA 1994 MGA Zone 56
Projection: Transverse Mercator
Datum: GDA 1994



DISCLAIMER
Subject To Survey.
Glencore makes every effort to ensure the quality of the information available on this map. Before relying on the information on this map, users should carefully evaluate its accuracy, currency, completeness and relevance for their purposes, and should obtain any appropriate professional advice relevant to their particular circumstances. Glencore cannot guarantee and assumes no responsibility for the accuracy, currency or completeness of the information and by using this map you accept that Glencore has no liability for any loss or damage in any form whatsoever caused directly or indirectly from the use of this map.

DATA SOURCE
© NSW Department of Finance, Services & Innovation 2018
© NSW Resources & Geoscience (DRG) 2018
© Glencore 2018

Trig Station Viewing Points



Montrose Property Viewing Points





FIGURE 1

Proposed IPC Site
Inspection Itinerary