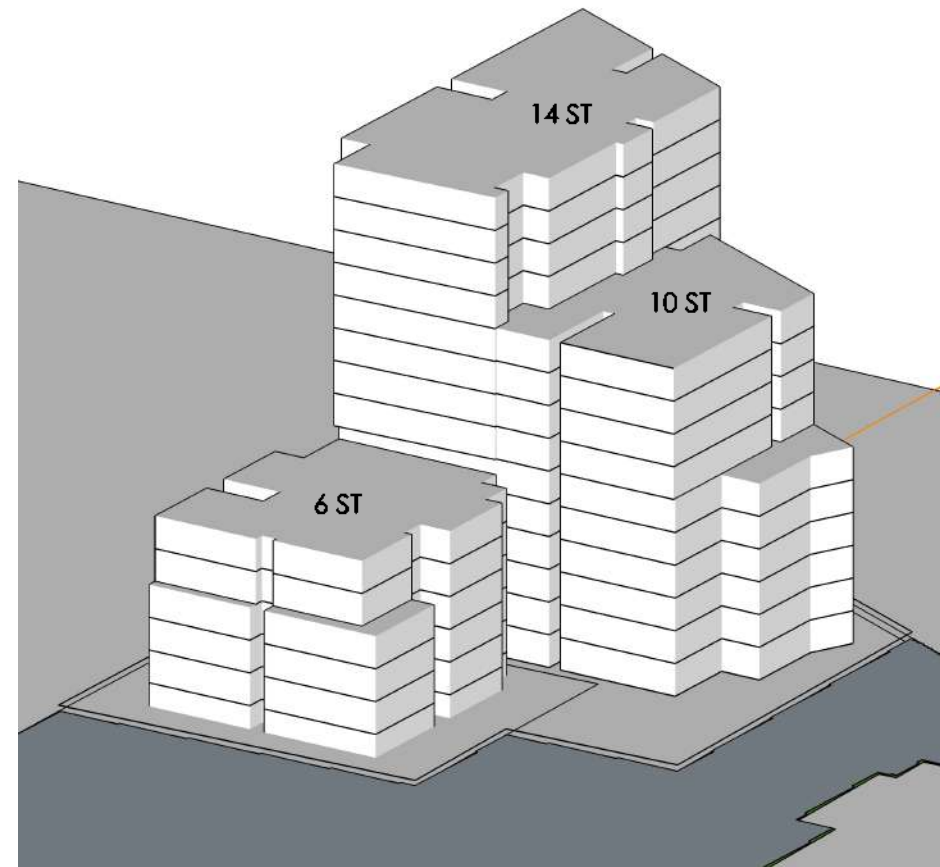
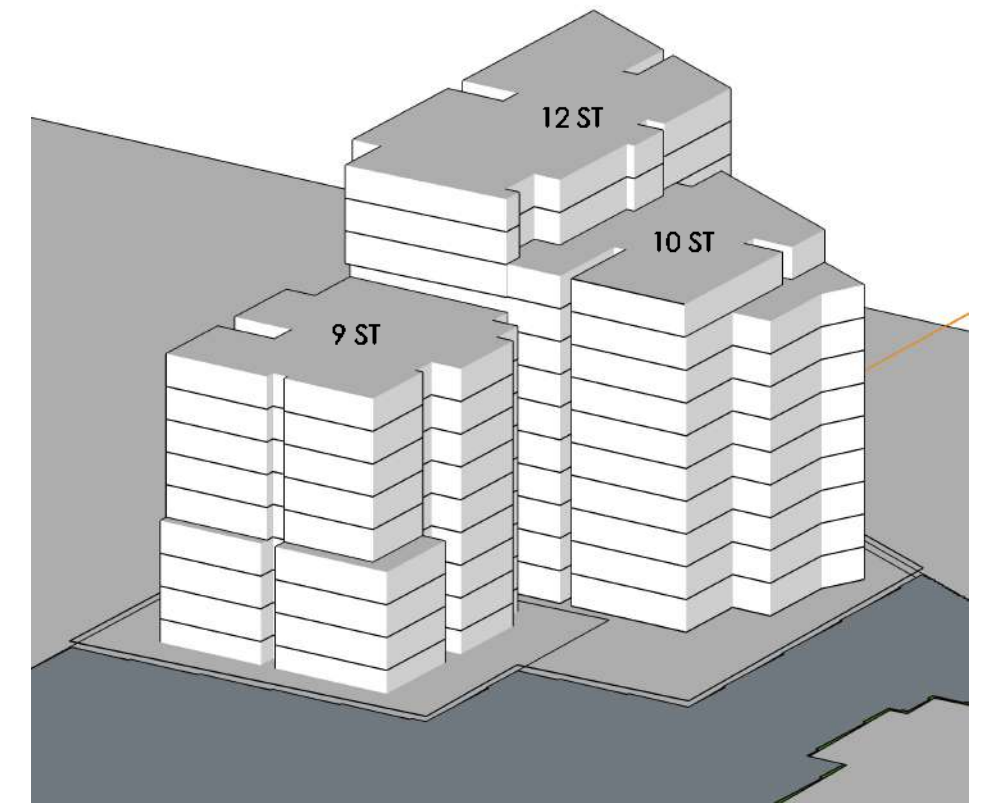


DA APPROVED MASSING

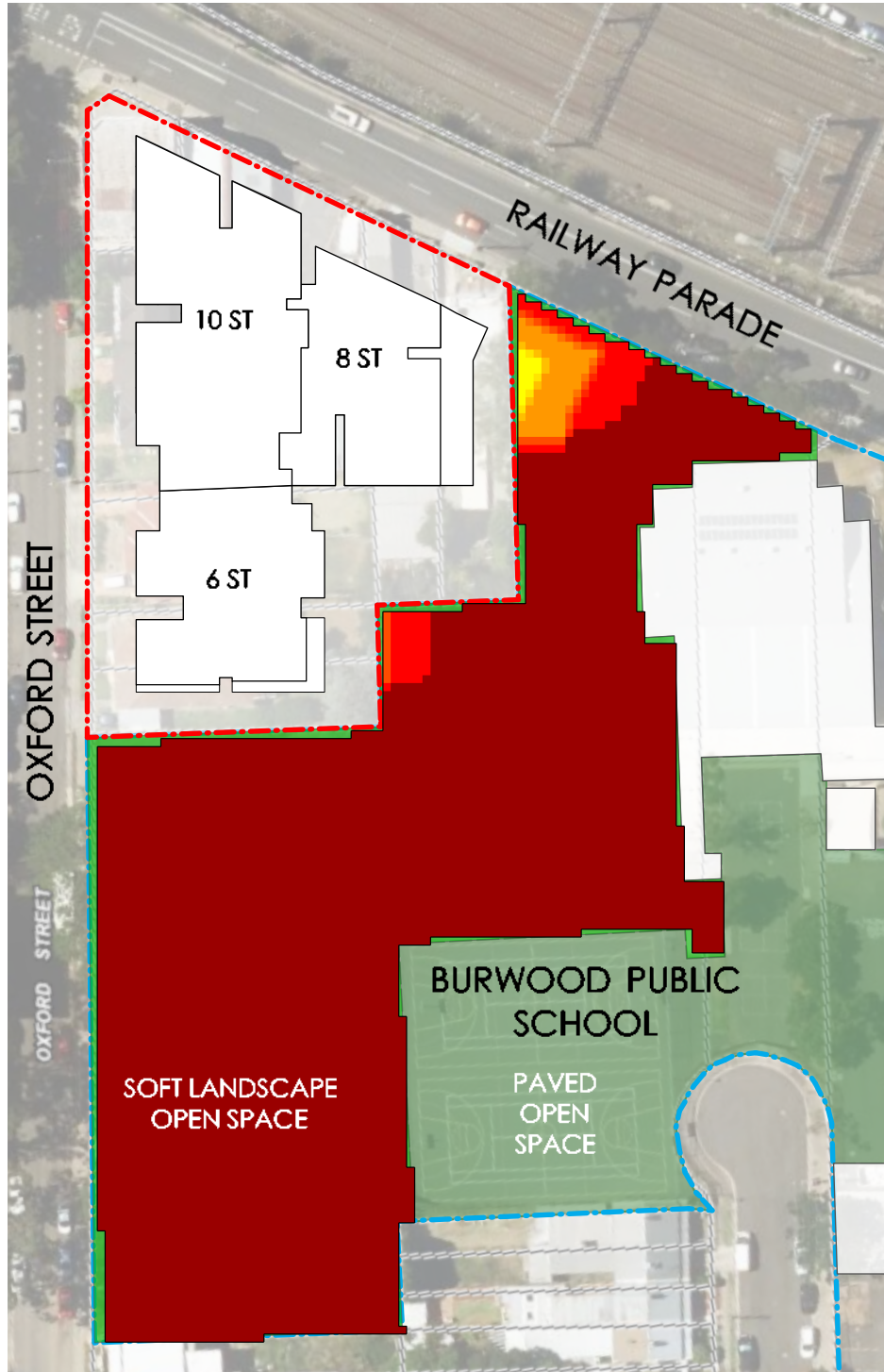


PROPOSED MASSING 14-10-6 STOREYS

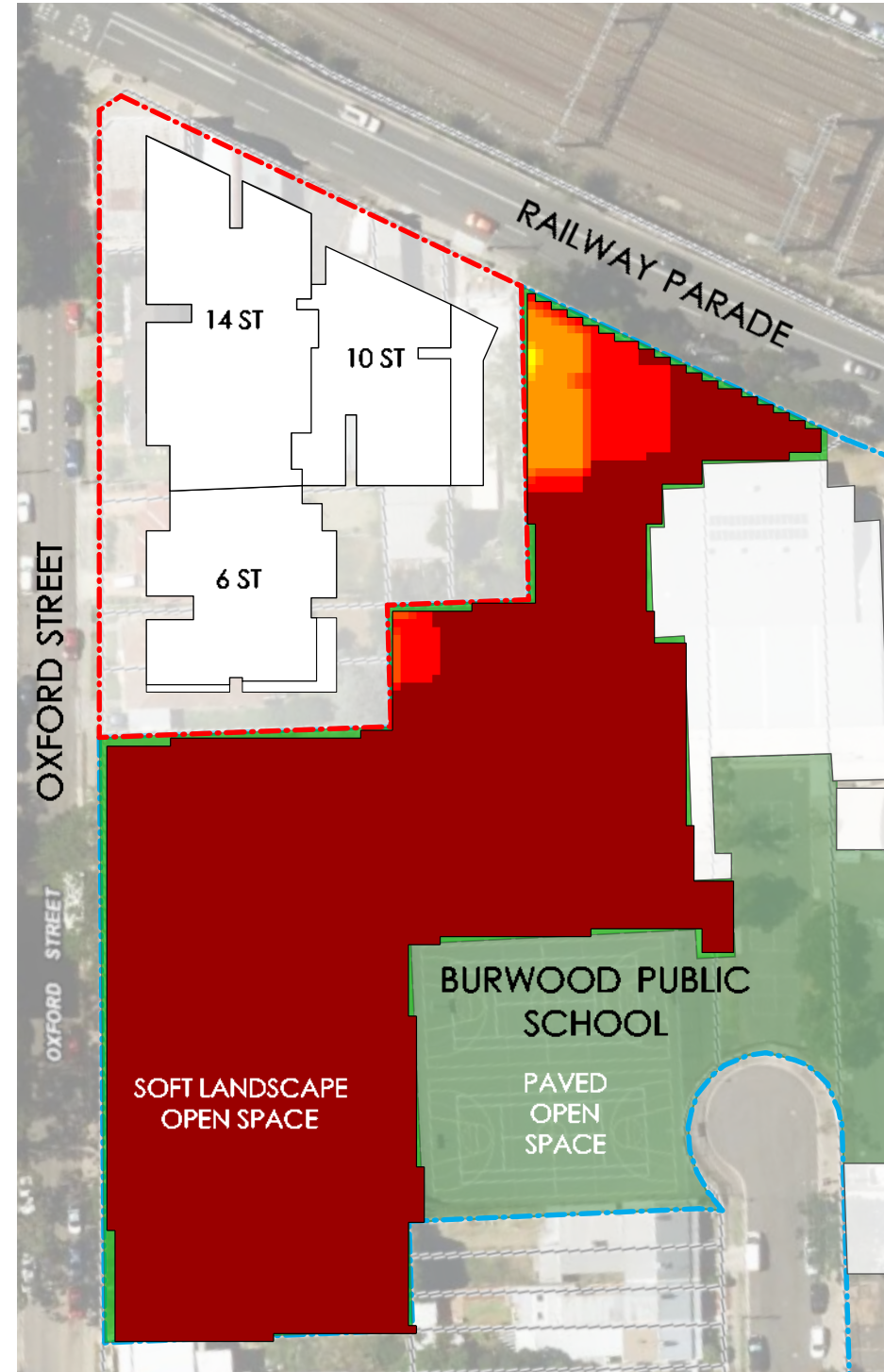


PROPOSED MASSING 12-10-9 STOREYS

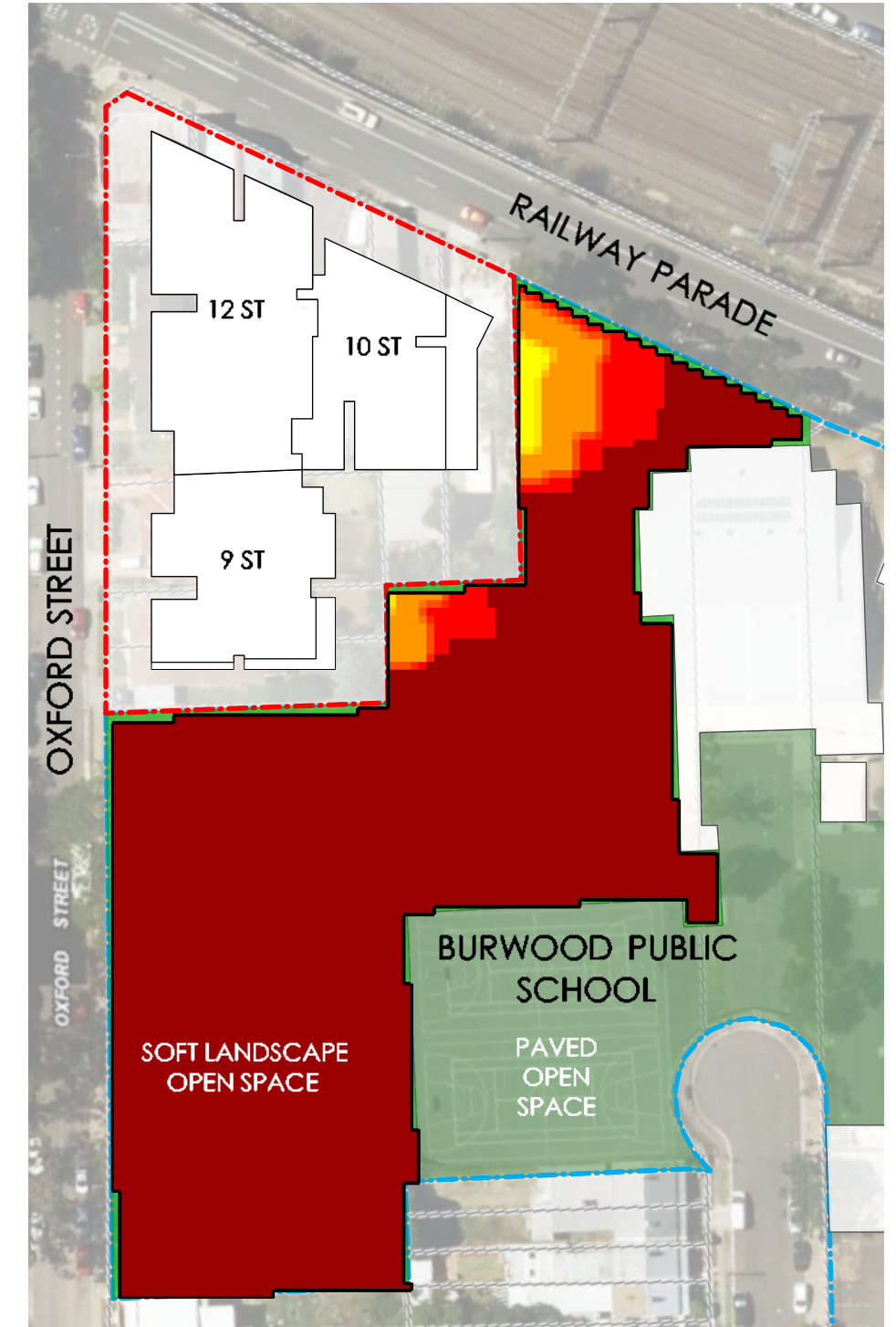
OVERSHADOWING ANALYSIS - SUMMER SOLSTICE DECEMBER 22ND



DA APPROVED MASSING - SUMMER SOLSTICE



PROPOSED MASSING 14-10-6 STOREYS - SUMMER SOLSTICE

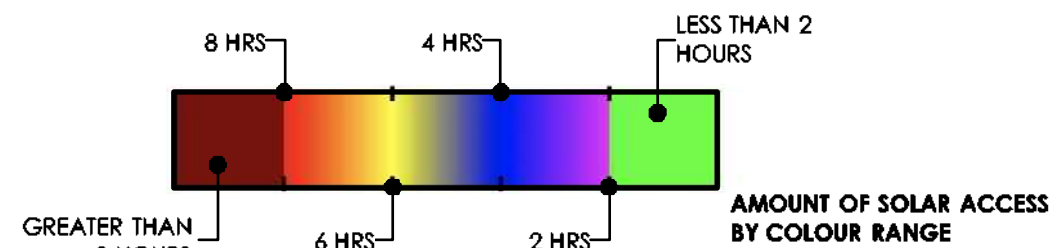


PROPOSED MASSING 12-10-9 STOREYS - SUMMER SOLSTICE

METHOD USED:
SKETCHUP 2017 + EXTENSION
SUNHOURS

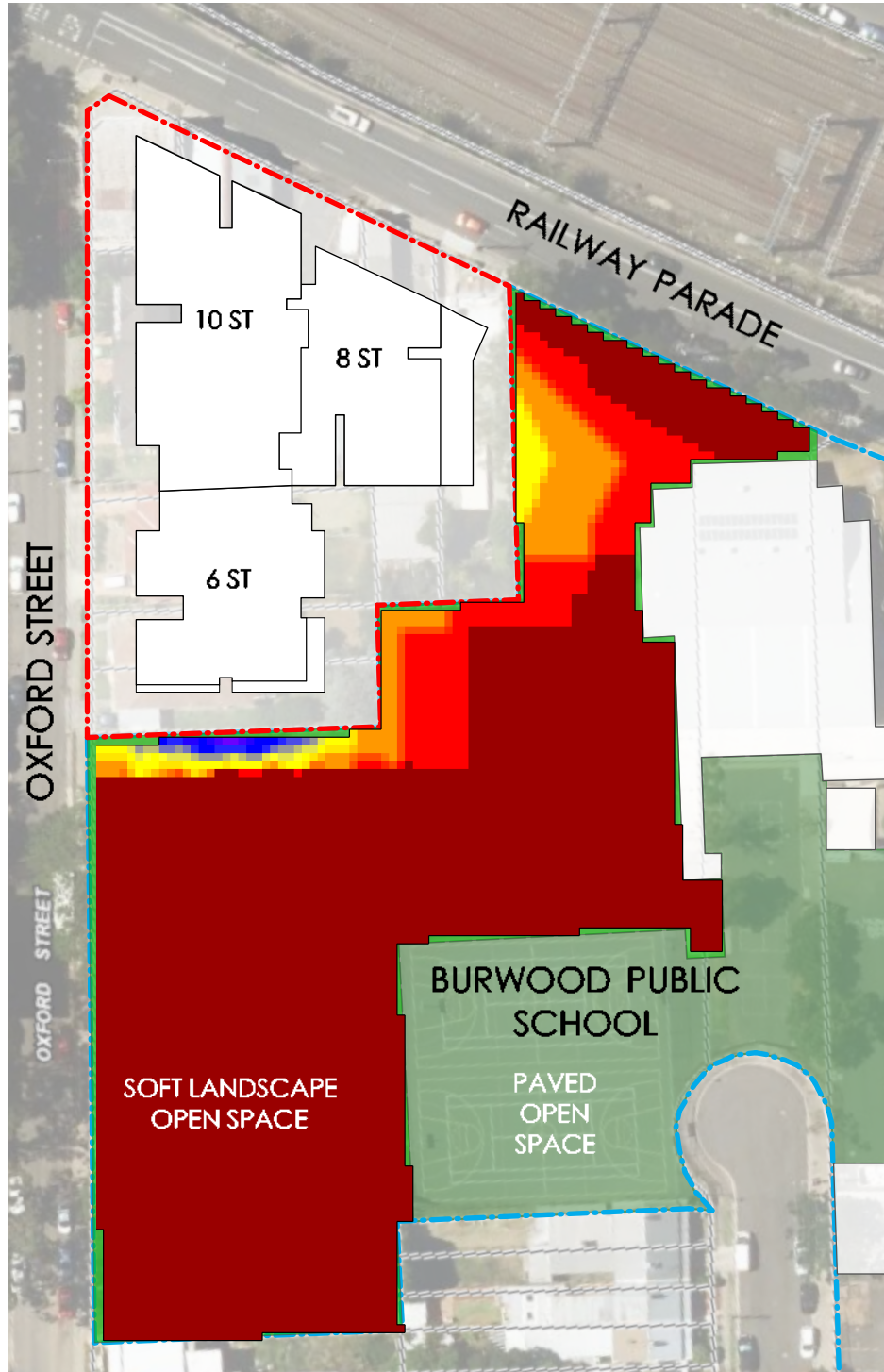
AREA ANALYSED LIMITED TO SOFT
LANDSCAPE OPEN SPACE OF
ADJACENT SITE BURWOOD PUBLIC
SCHOOL

GRID APPROXIMATELY 1m x 1m

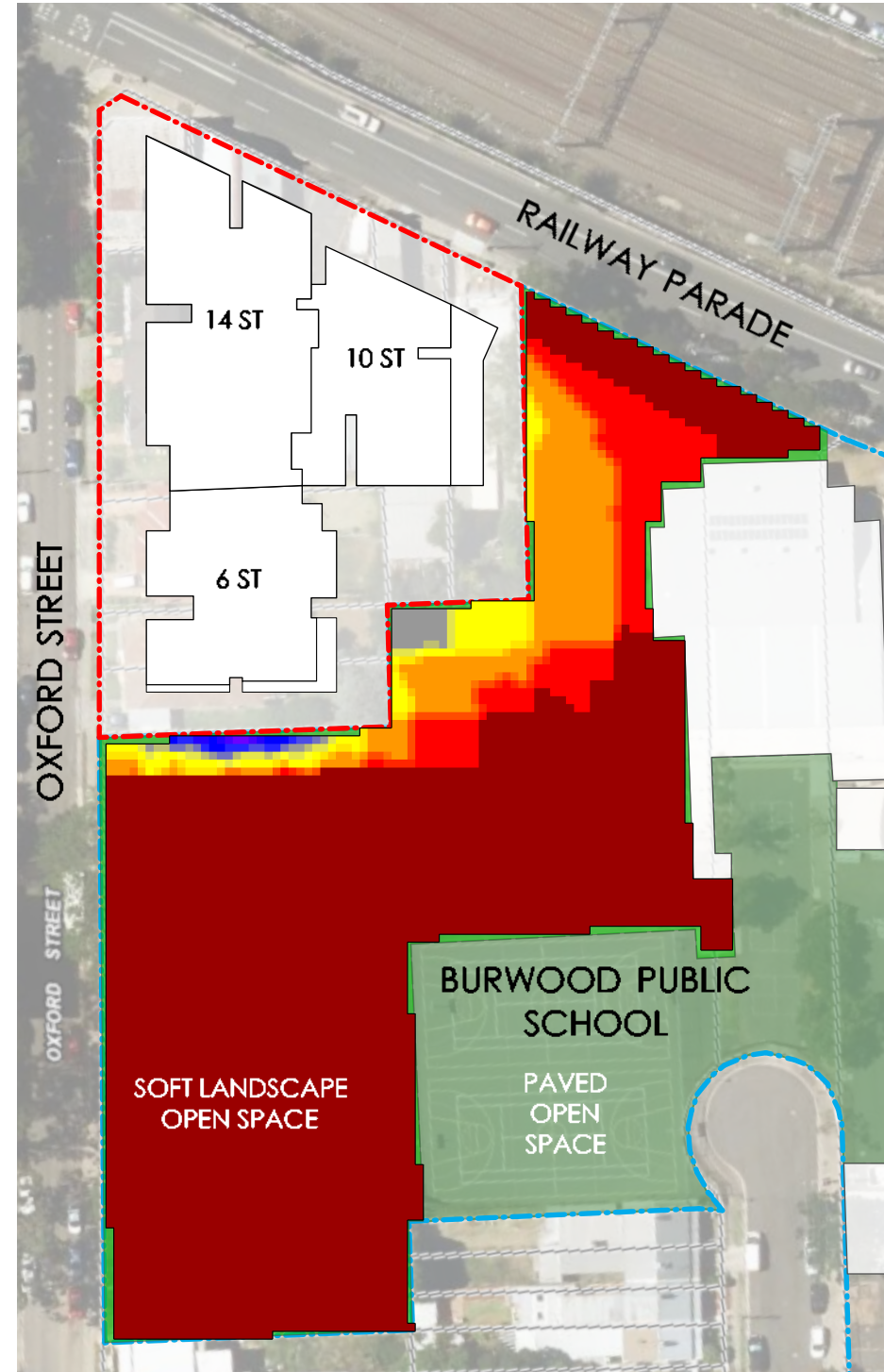


URBAN DESIGN REPORT 68-72 RAILWAY PDE AND 2-2A,4-10 OXFORD ST, BURWOOD

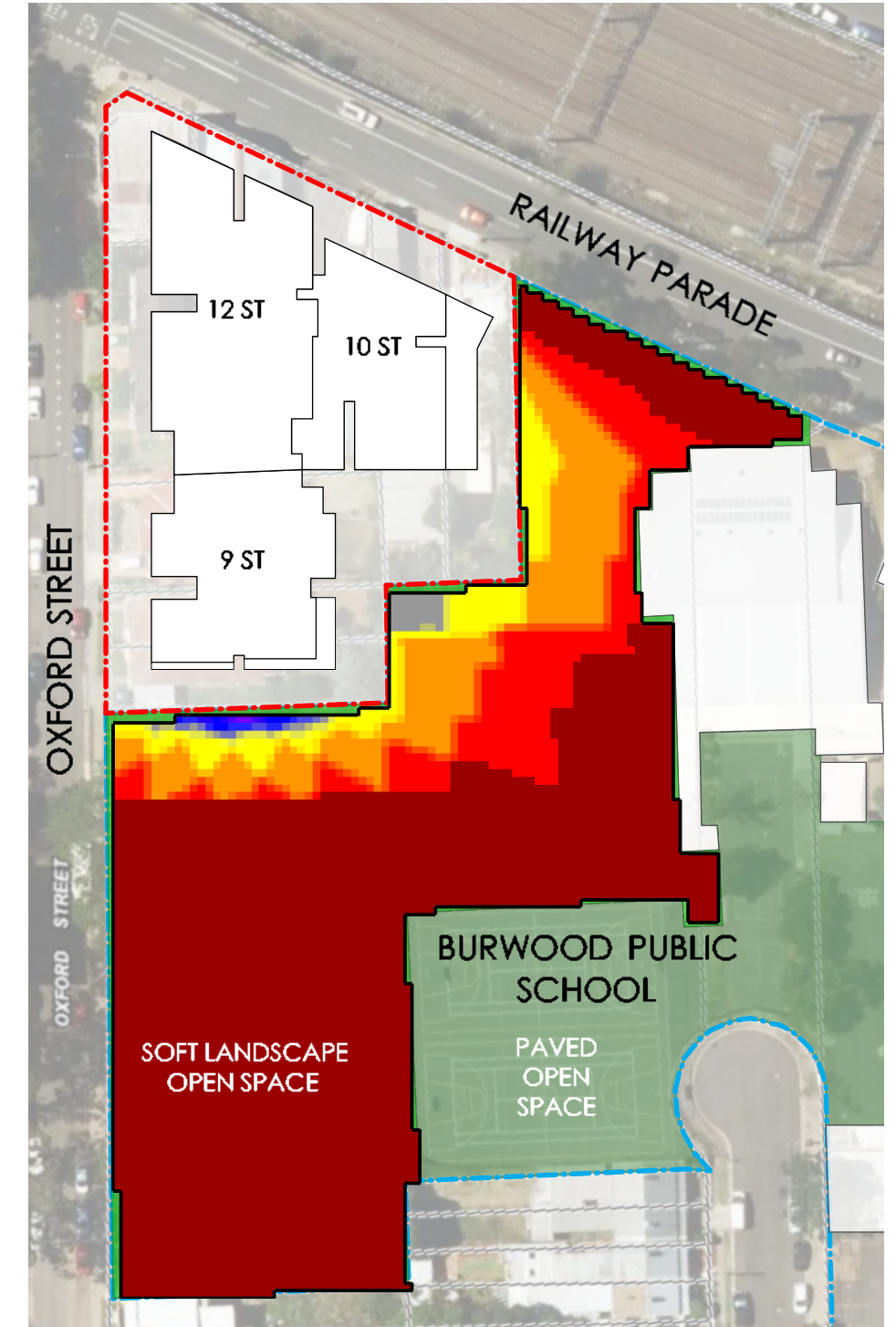
--- Site Boundary
--- Burwood Public School



DA APPROVED MASSING - AUTUMN EQUINOX



PROPOSED MASSING 14-10-6 STOREYS - AUTUMN EQUINOX

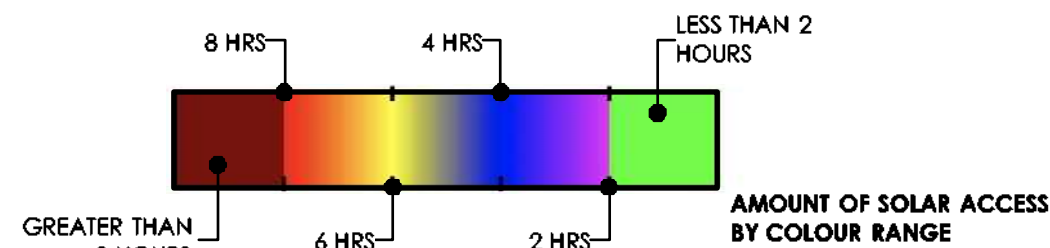


PROPOSED MASSING 12-10-9 STOREYS - AUTUMN EQUINOX

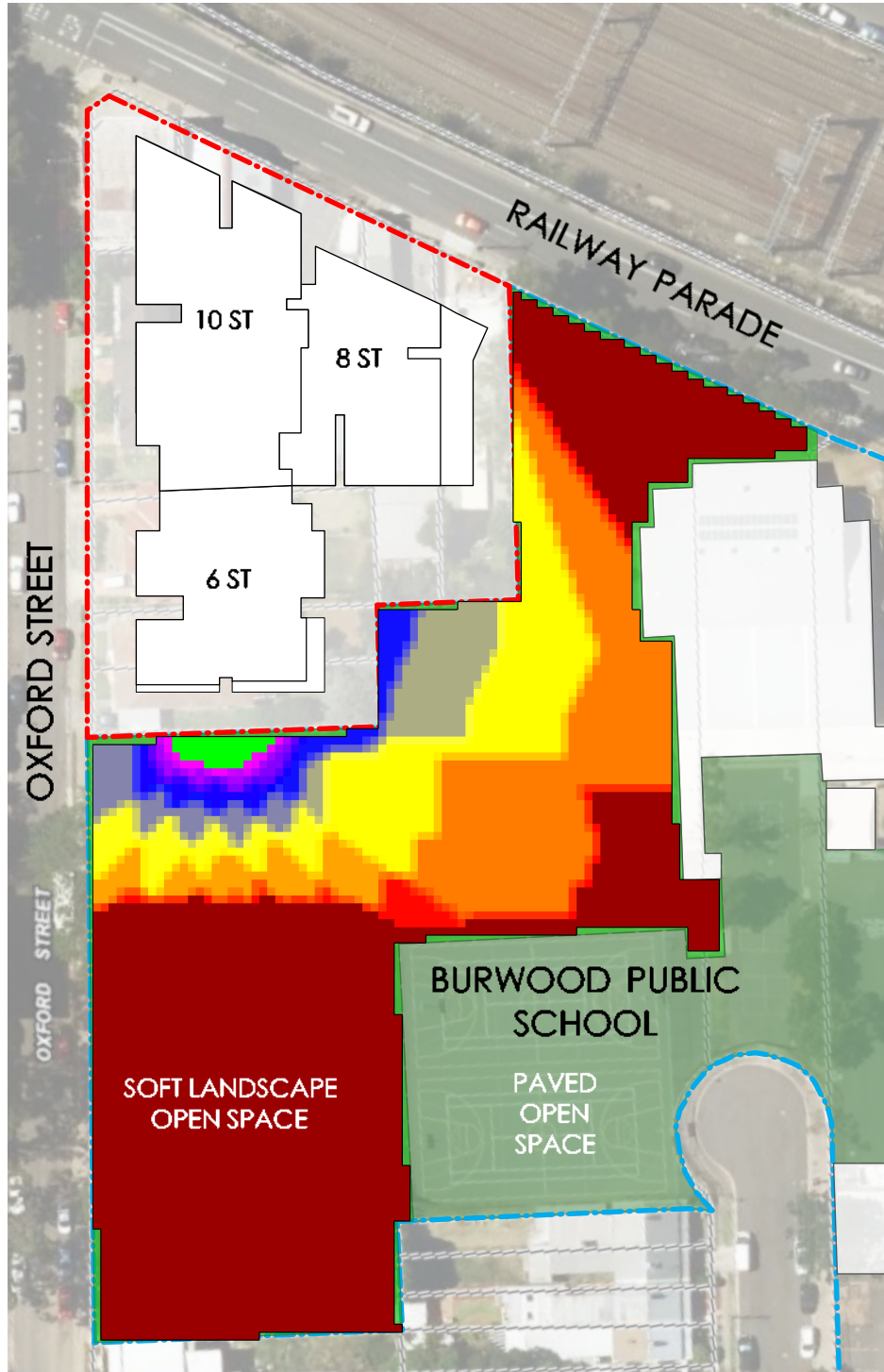
METHOD USED:
SKETCHUP 2017 + EXTENSION
SUNHOURS

AREA ANALYSED LIMITED TO SOFT
LANDSCAPE OPEN SPACE OF
ADJACENT SITE BURWOOD PUBLIC
SCHOOL

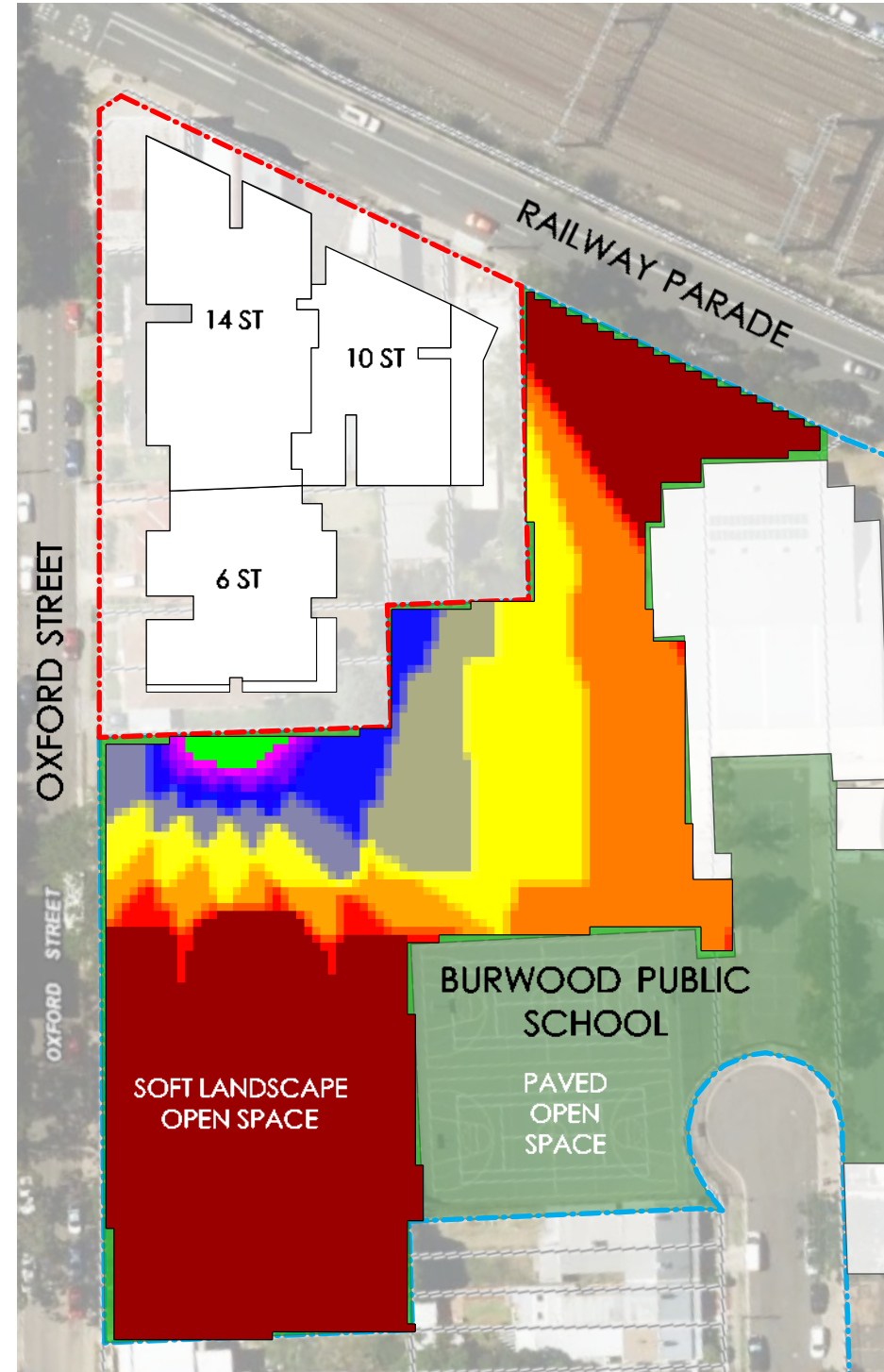
GRID APPROXIMATELY 1m x 1m



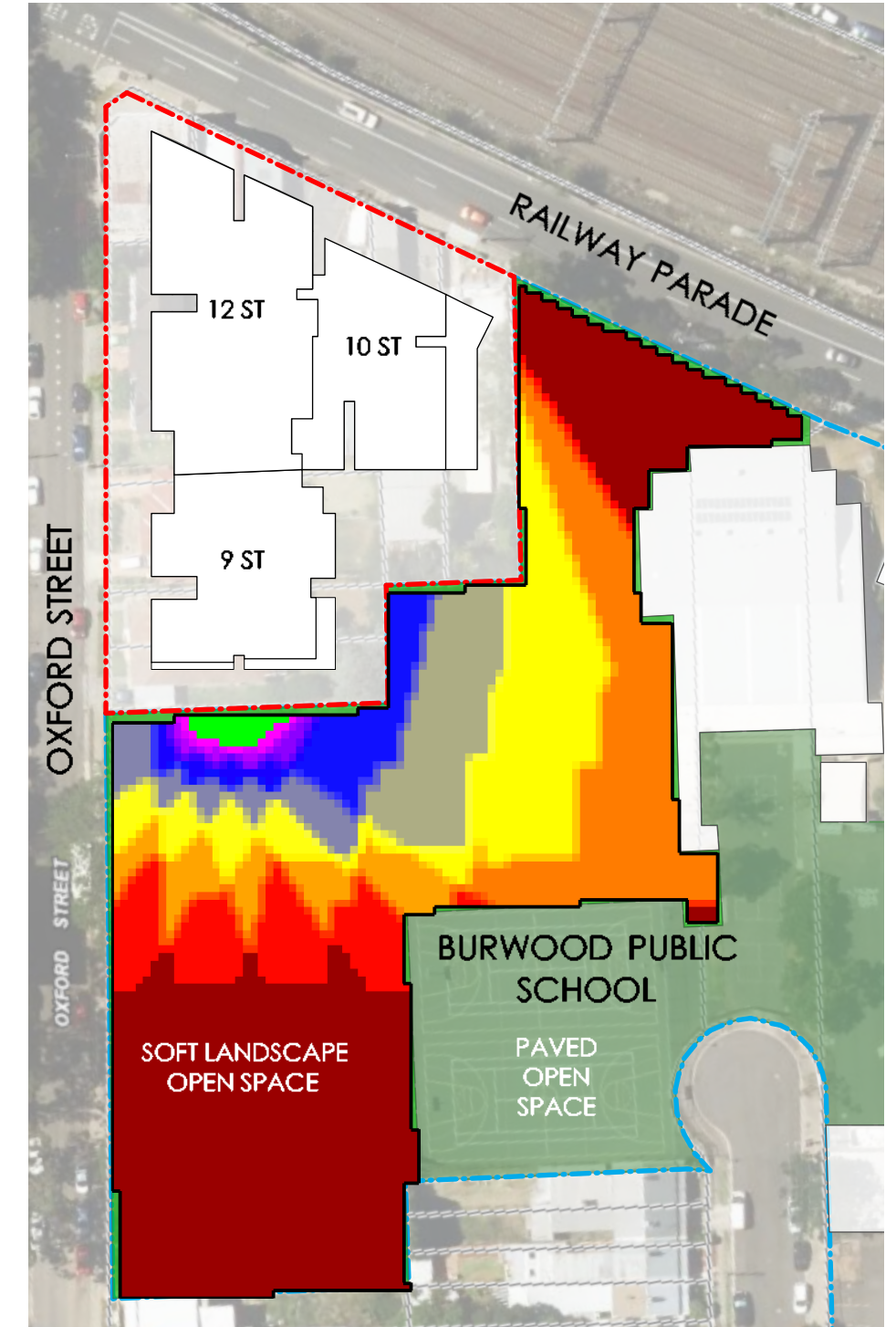
--- Site Boundary
--- Burwood Public School



DA APPROVED MASSING - WINTER SOLSTICE



PROPOSED MASSING 14-10-6 STOREYS - WINTER SOLSTICE

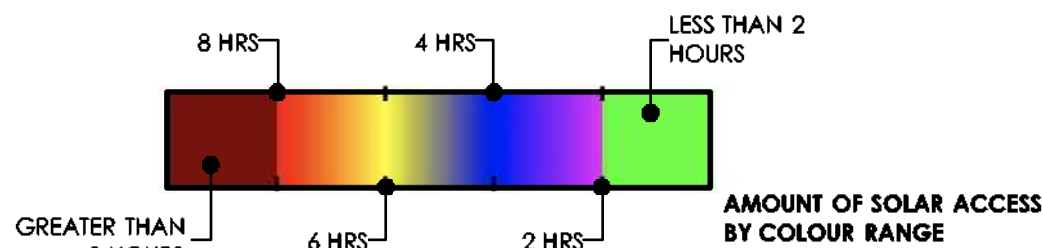


PROPOSED MASSING 12-10-9 STOREYS - WINTER SOLSTICE

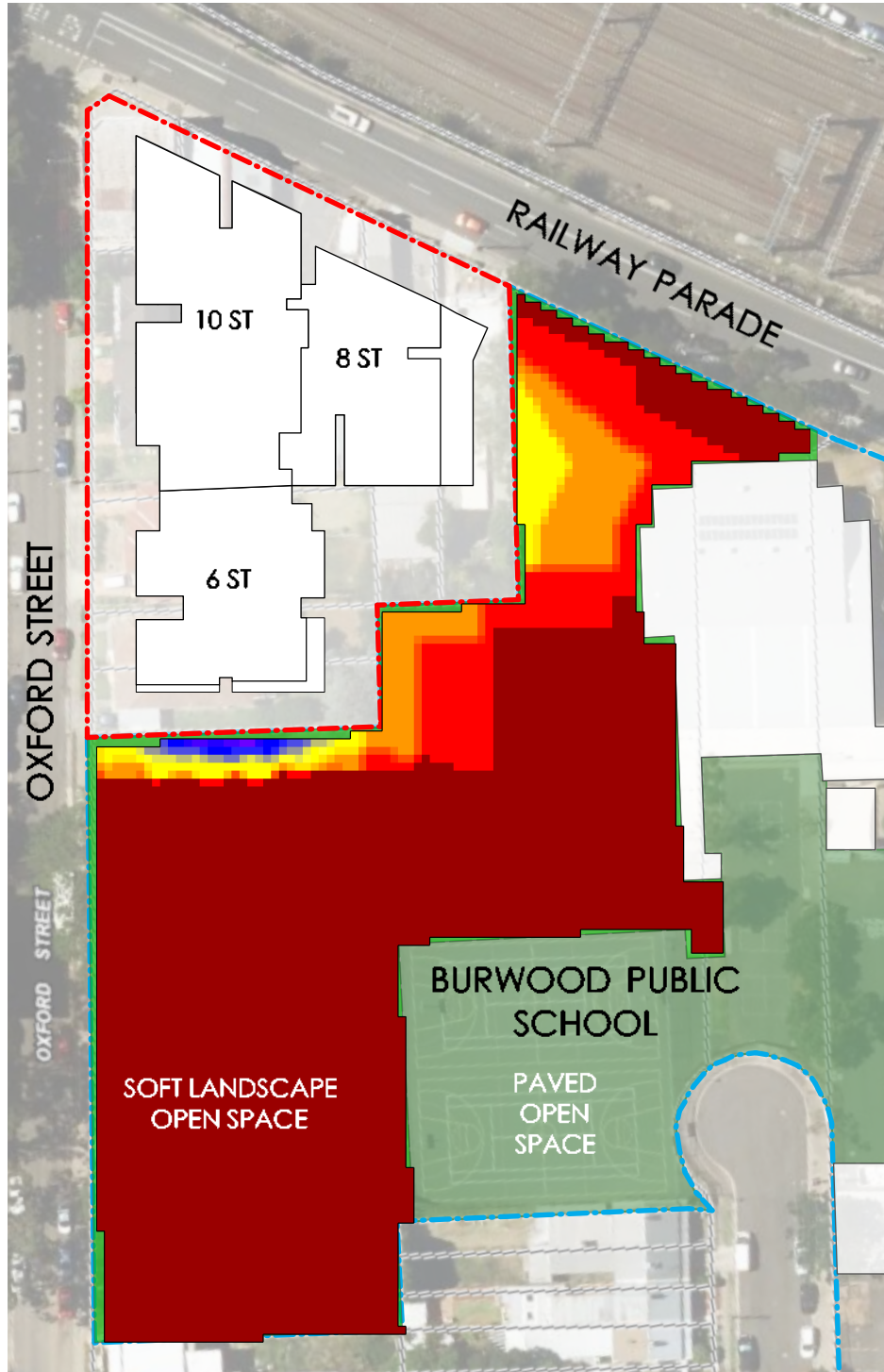
METHOD USED:
SKETCHUP 2017 + EXTENSION
SUNHOURS

AREA ANALYSED LIMITED TO SOFT
LANDSCAPE OPEN SPACE OF
ADJACENT SITE BURWOOD PUBLIC
SCHOOL

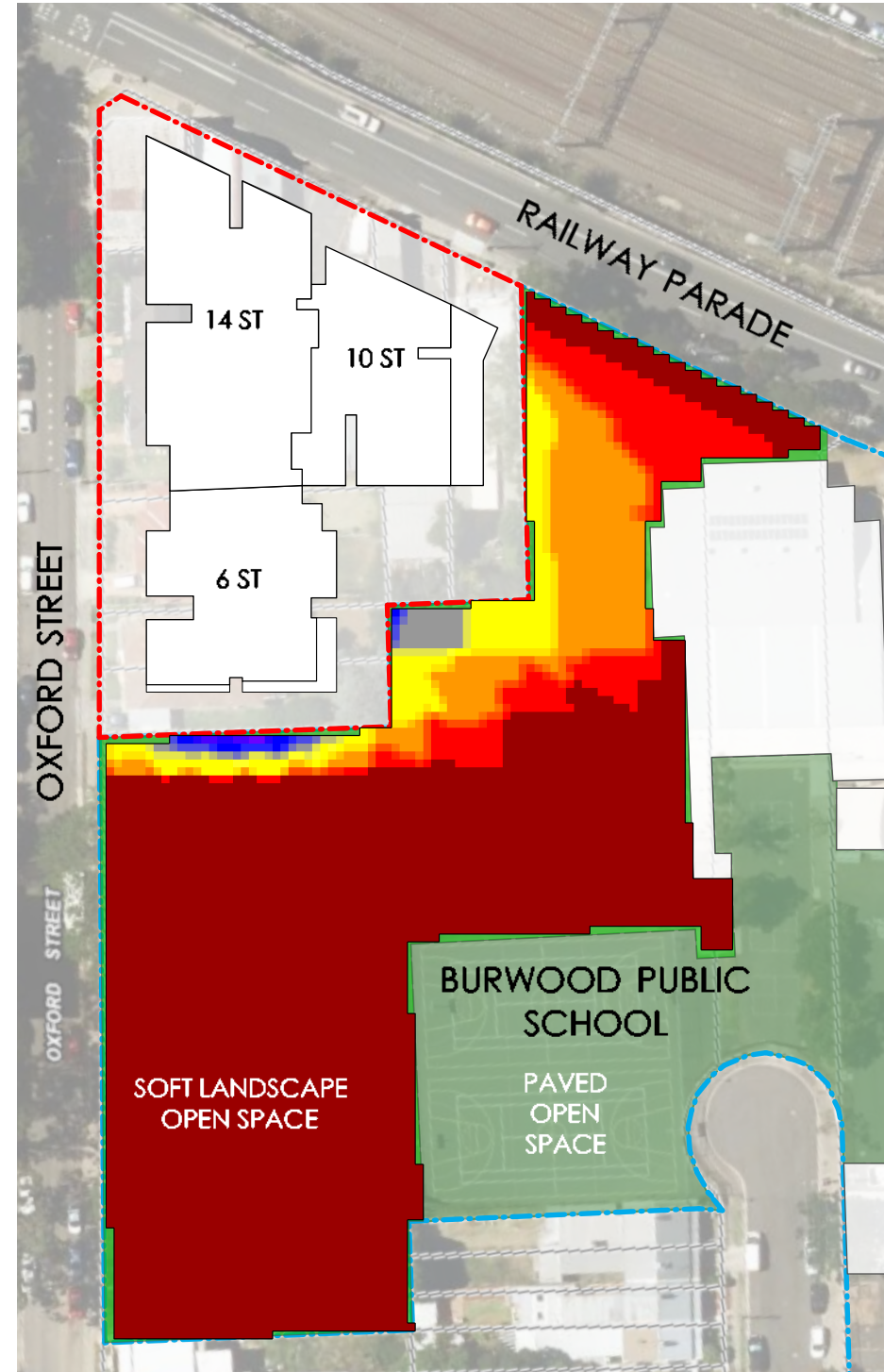
GRID APPROXIMATELY 1m x 1m



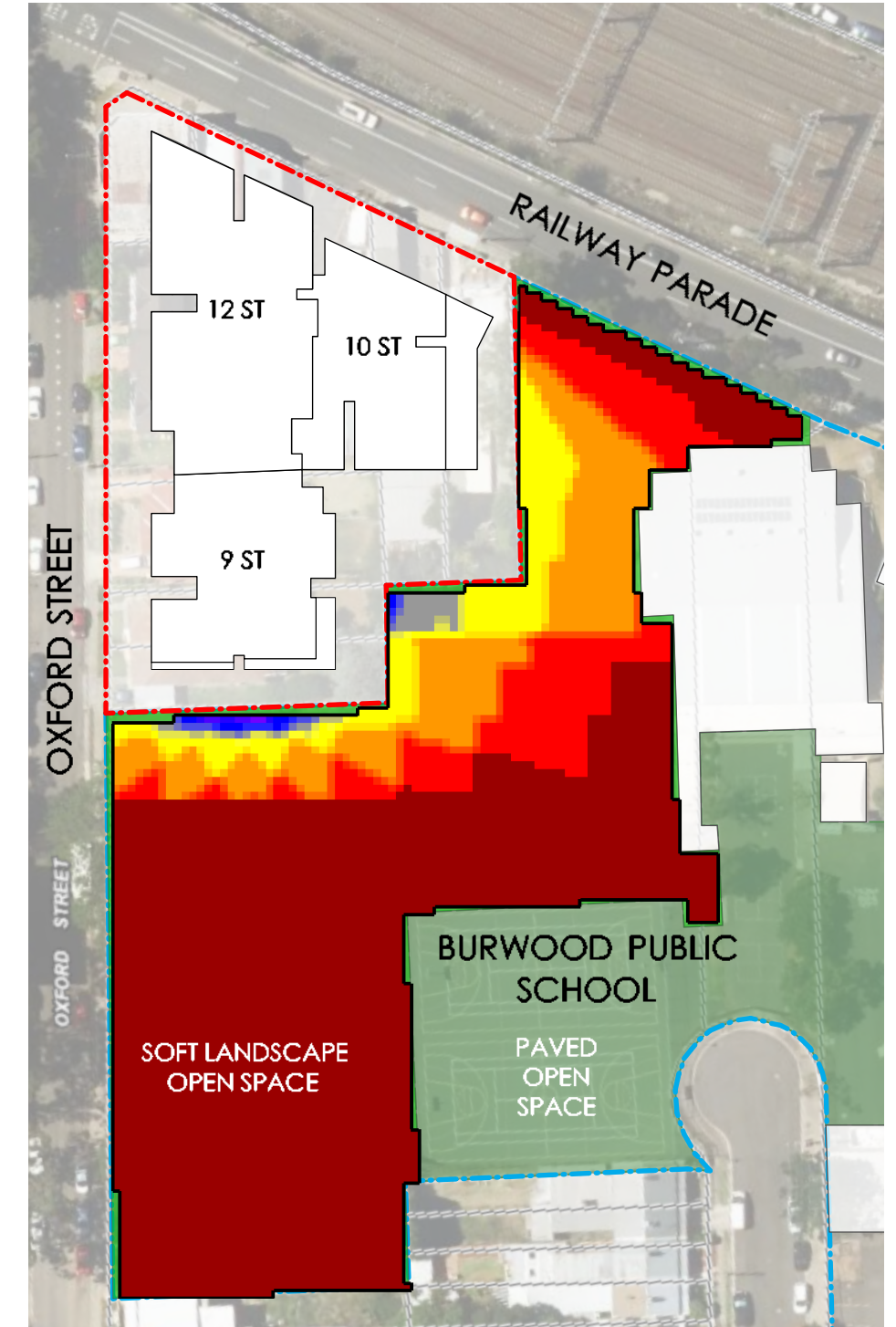
--- Site Boundary
--- Burwood Public School



DA APPROVED MASSING - SPRING EQUINOX



PROPOSED MASSING 14-10-6 STOREYS - SPRING EQUINOX

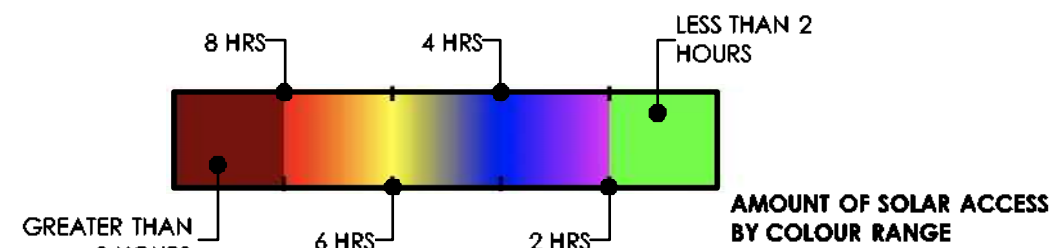


PROPOSED MASSING 12-10-9 STOREYS - SPRING EQUINOX

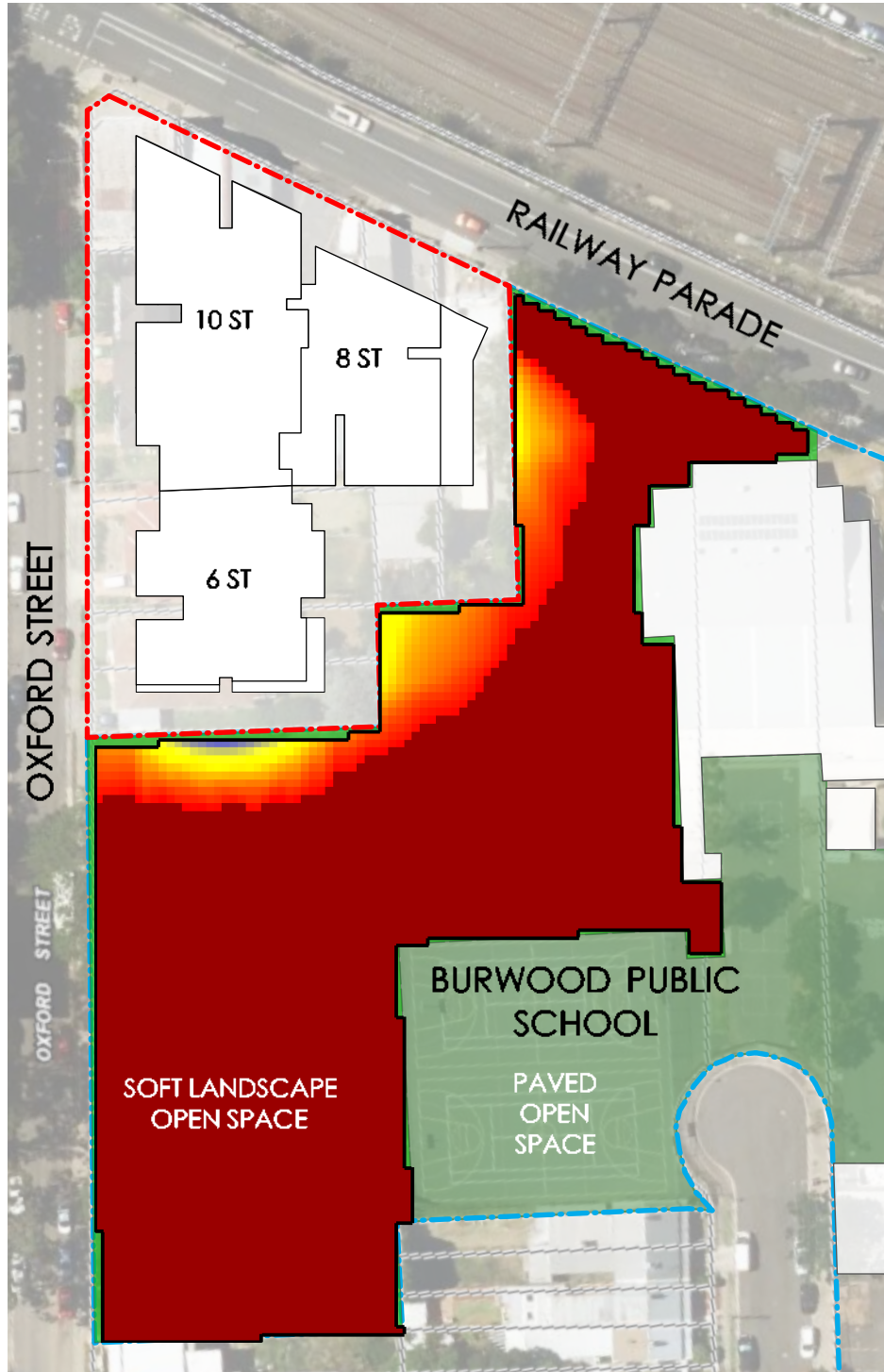
METHOD USED:
SKETCHUP 2017 + EXTENSION
SUNHOURS

AREA ANALYSED LIMITED TO SOFT
LANDSCAPE OPEN SPACE OF
ADJACENT SITE BURWOOD PUBLIC
SCHOOL

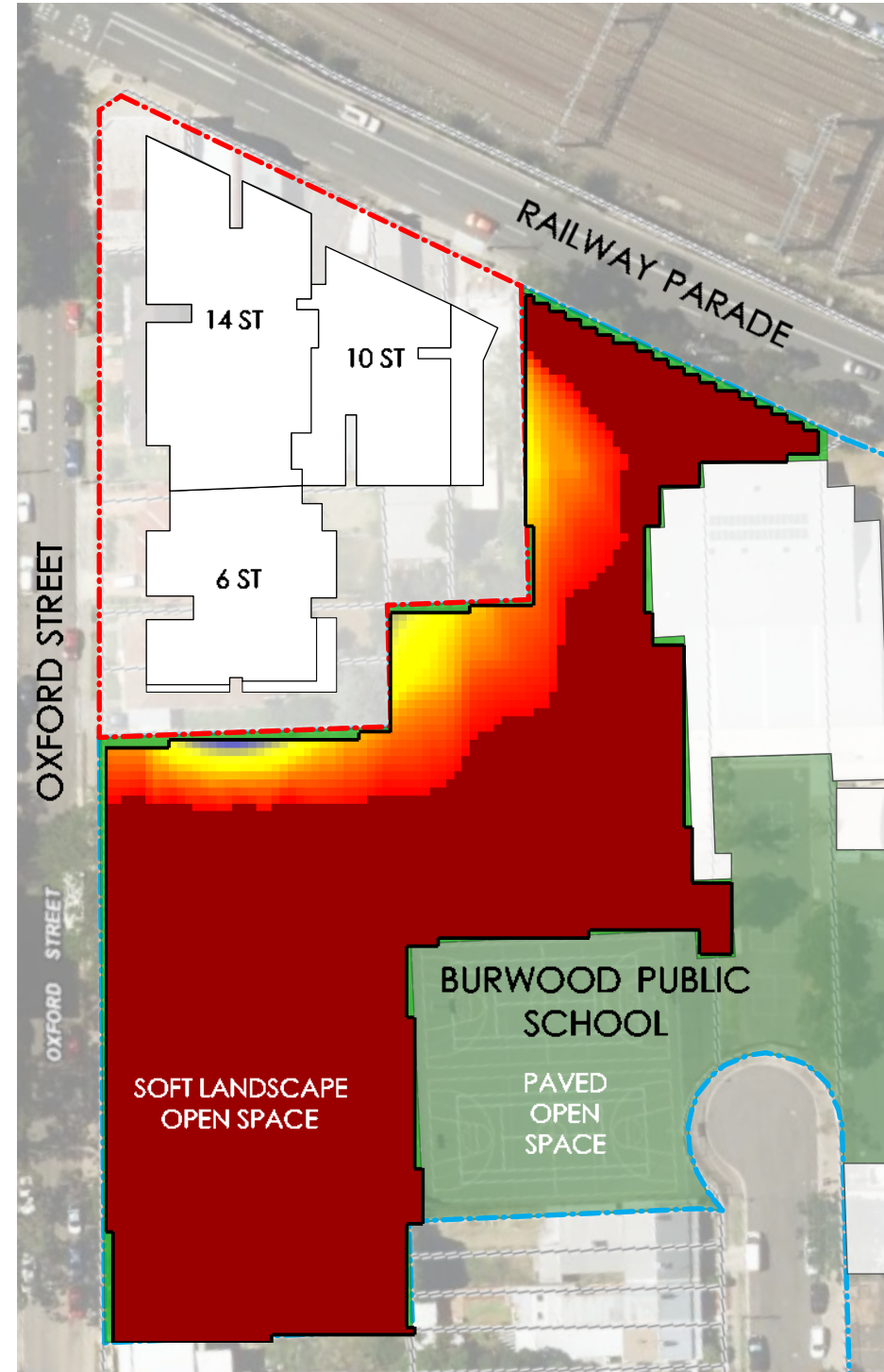
GRID APPROXIMATELY 1m x 1m



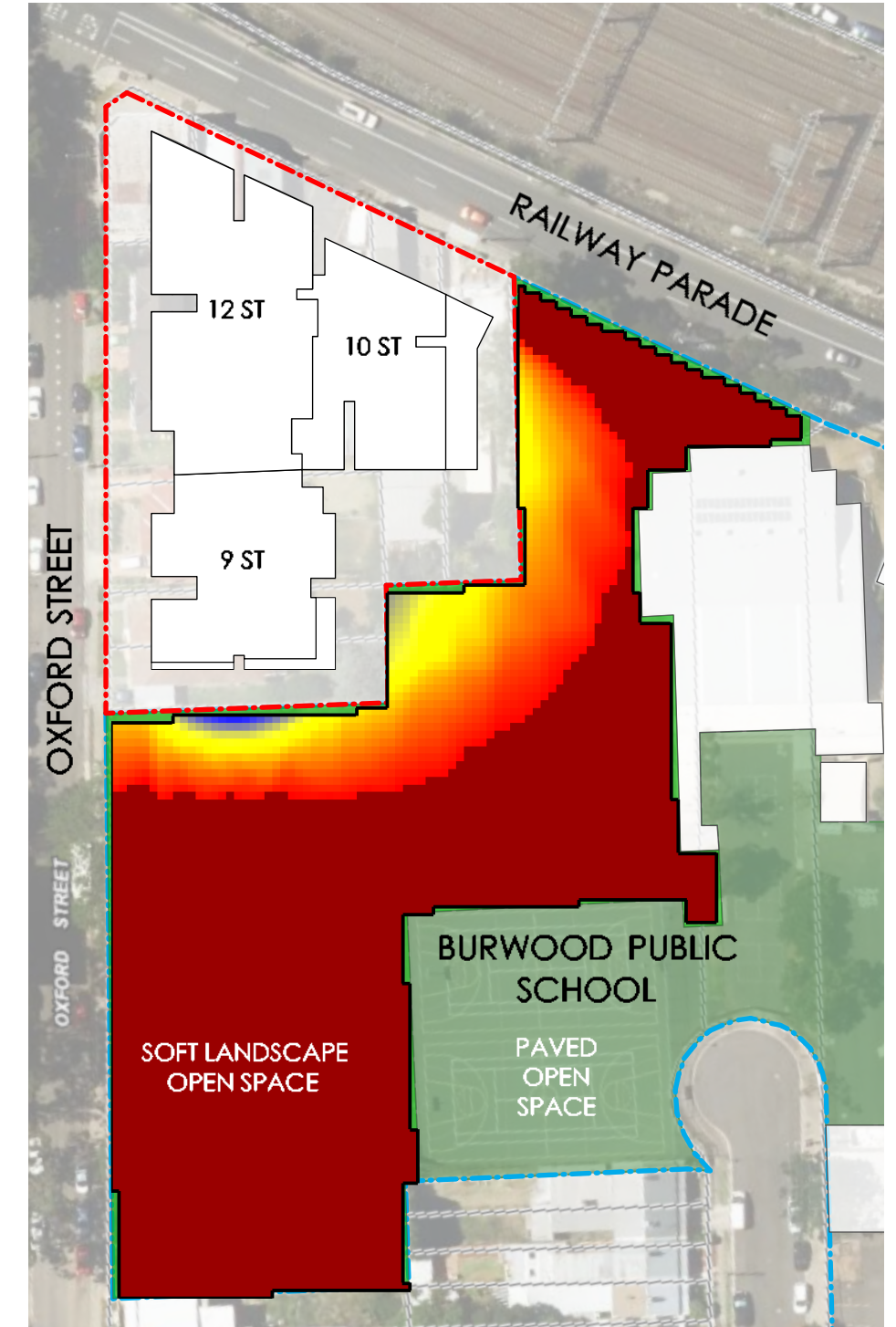
--- Site Boundary
--- Burwood Public School



DA APPROVED MASSING - YEARLY AVERAGE



PROPOSED MASSING 14-10-6 STOREYS - YEARLY AVERAGE



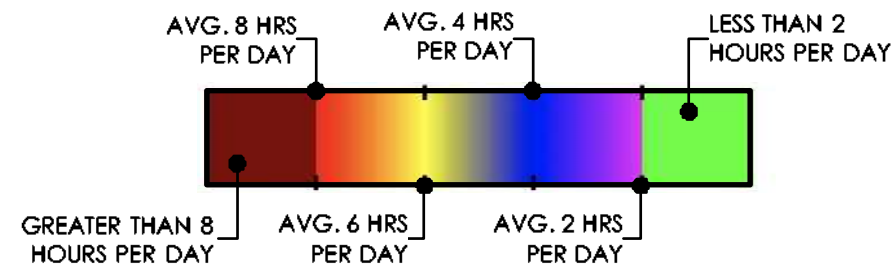
PROPOSED MASSING 12-10-9 STOREYS - YEARLY AVERAGE

METHOD USED:
SKETCHUP 2017 + EXTENSION
SUNHOURS

AREA ANALYSED LIMITED TO SOFT
LANDSCAPE OPEN SPACE OF
ADJACENT SITE BURWOOD PUBLIC
SCHOOL

OVERSHADOWING IMPACT
AVERAGE ACROSS ONE YEAR

GRID APPROXIMATELY 1m x 1m



--- Site Boundary
--- Burwood Public School