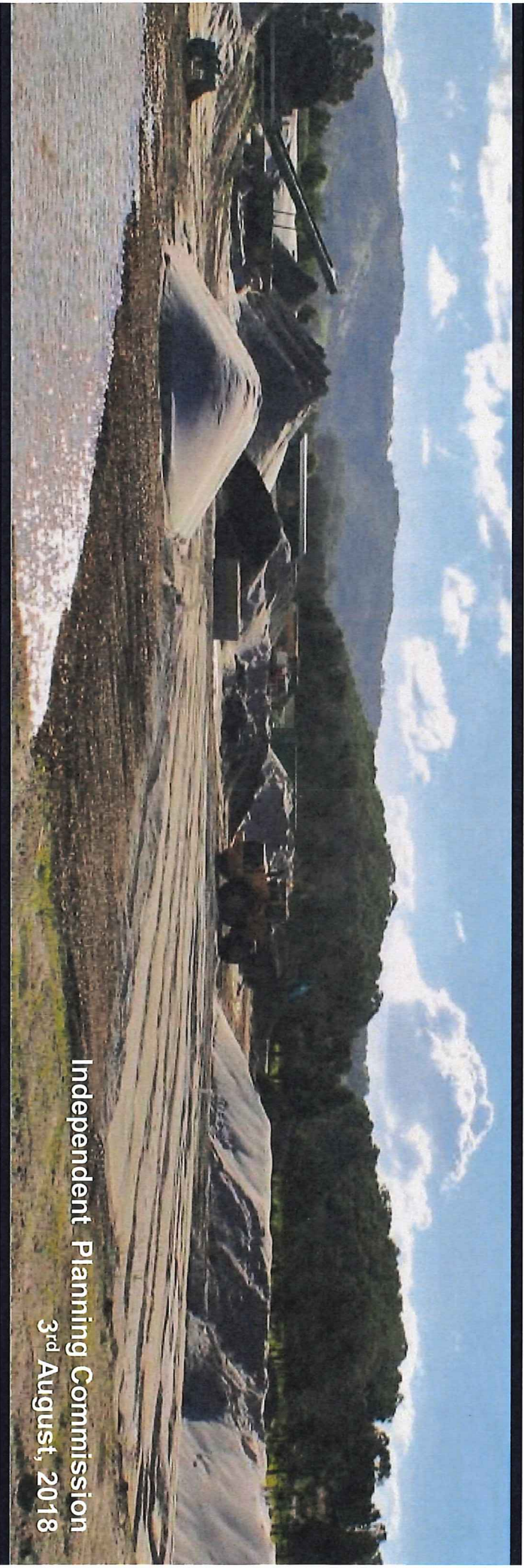




Dunloe Sand Quarry

Development Consent Modification



Independent Planning Commission
3rd August, 2018

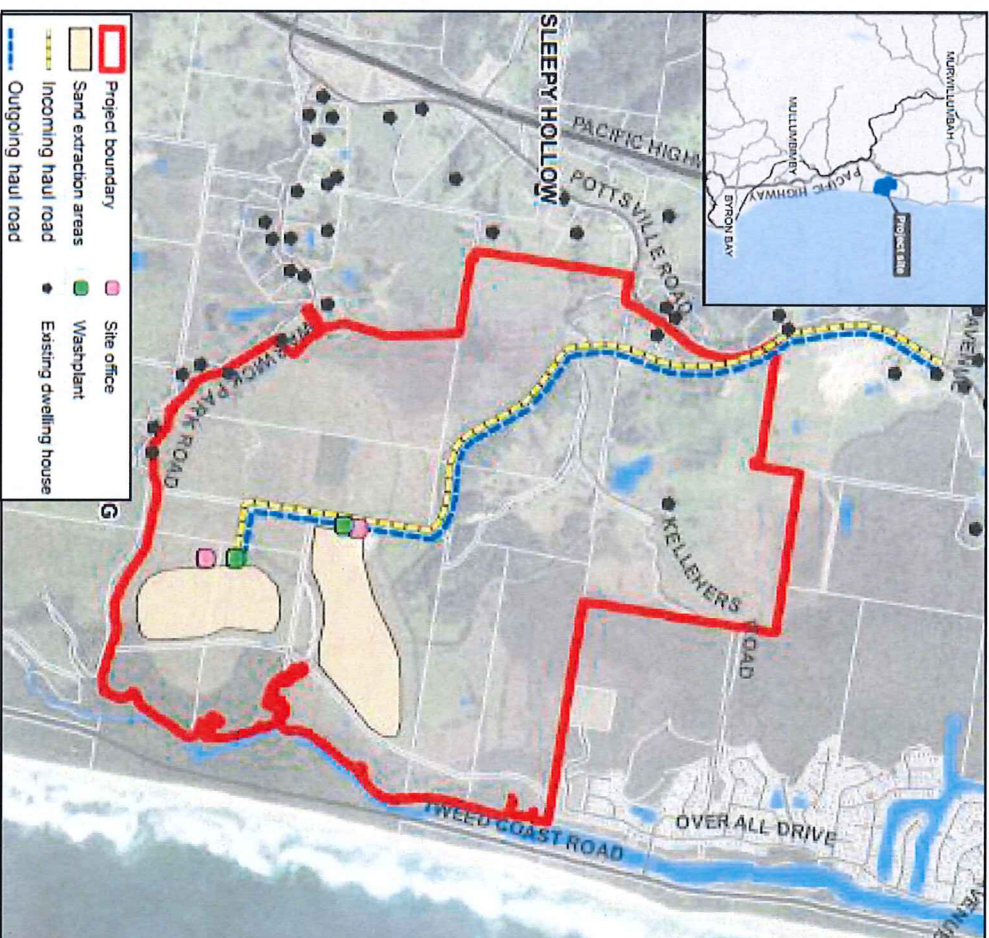
Context

LOCATION

- Located approximately 3km south of Pottsville
- Falls within Tweed local government area, NSW
- Access to the site is via Pottsville Road, a two-way sealed road

PROJECT BACKGROUND

- Initially established on a rural property called Dunloe Park by Ramtech Pty Ltd
- Purchased by Holcim on 2016
- Existing Development Consent 2008
- Consent modified once before for installation of sheds



Current Operations

ACTIVITIES

- Load and haul activities;
- Washing, screening and stockpiling of product;
- Overburden removal and stockpiling;
- Maintenance of rehabilitation undertaken north eastern area;
- Load out and sales of topsoil, brickies loam and concrete sands to the local market.

LAYOUT

- Two main extraction ponds consisting of 25 hectares and 31.7 hectares respectively. Both areas are located adjacent to the eastern boundary, towards the southern end of the site.
- Large agricultural sheds are also used for the purpose of storage and ancillary maintenance of machinery and plant equipment associated with the quarry. A site office and wash plant is located within each extraction area.

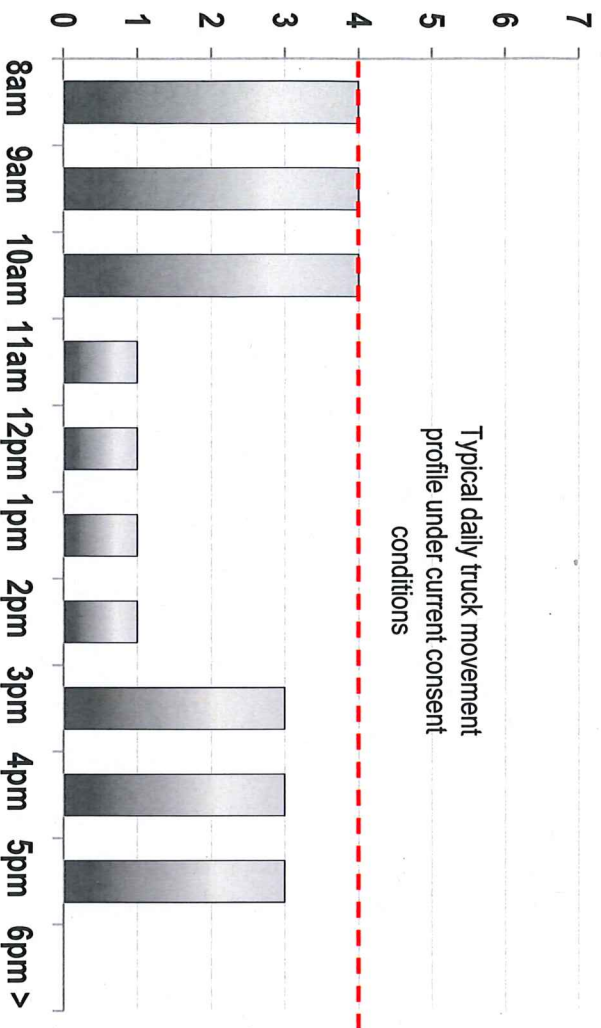
PRODUCTION CAPACITY: 300,000t per annum
QUARRY LIMIT: 12 metres below natural surface
MARKETS SERVICED: North coast NSW
OPERATING HOURS: 7am-5pm, Mon-Fri, 8am to 1pm



Truck Movements

CURRENT APPROVAL

- Schedule 2, Condition 8 of the Project Approval requires that ‘the proponent shall ensure that heavy vehicle movements (in and out) associated within the project do not exceed 8 per hour’.



CONSTRAINTS

- In practice and based on Holcim’s experience, the current Project Approval HVM condition has the effect of reducing the potential to achieve the maximum approved annual output of the quarry significantly, well below that permitted under the terms of the Project Approval.
- Demand for quarry product fluctuates significantly according to supply contracts for supply of material
- Typically ‘spikes’ during morning periods.
- The current hourly HVM limit has the effect of limiting the ability to supply the required quantity of quarry product at the volumes demanded during peak periods

Modification

PROPOSED MODIFICATION

- Section 75W application to modify Schedule 2, Condition 8 of Project Approval 06/0030 to allow up to 120 inbound and 120 outbound HVM from the site per weekday and up to 60 inbound and 60 outbound HVM on Saturdays.
- These movements average to approximately 100 heavy vehicle movements per working day over the course of a calendar month.

BENEFITS

- Heavier use during the middle of the day periods where possible
- Reduce afternoon increase for final loading/ pre loading that conflicts with school times
- Heavily reduce the current need for pre loads for long haul starts the following day
- Proposed limits can allow us to reduce overall daily hours of deliveries leaving the site

