

Modification to Minister's Approval

Section 75W of the *Environmental Planning and Assessment Act 1979*

As delegate for the Minister for Planning under delegation executed on 14 September 2011, we the Independent Planning Commission of New South Wales (the Commission) hereby approve the modification of the project approval referred to in Schedule 1, subject to the conditions outlined in Schedule 2.



Mr John Hann (Chair)
Member of the Commission

Sydney

7 August 2018

SCHEDULE 1

Application Number:	MP 06_0228
Proponent:	Shoalhaven Starches Pty Ltd
Approval authority:	Minister for Planning
Project:	Shoalhaven Starches Expansion Project
Date of original approval:	29 January 2009
Modification:	MP 06_0228 MOD 15 – Carbon Dioxide Plant

SCHEDULE 2

This approval is modified by:

In the Definitions List:

1. Replacing the following definition:

Project	The development described in the EA, which includes the continued implementation of all existing and approved development on site, as modified by MP 06_0228 MOD 1, MP 06_0228 MOD 2, MP 06_0228 MOD 3, MP 06_0228 MOD 4, MP 06_0228 MOD 5, MP 06_0228 MOD 6, MP 06_0228 MOD 7, MP 06_0228 MOD 8, MP 06_0228 MOD 9, MP 06_0228 MOD 10, MP 06_0228 MOD 11, MP 06_0228 MOD 12, MP 06_0228 MOD 13, MP 06_0228 MOD 14 and MP 06_0228 MOD 15
---------	---

2. Replacing the following definition:

Statement of Commitments	The Proponent's commitments in the EA and MOD 1, MOD 2, MOD 3, MOD 4, MOD 5, MOD 6, MOD 7, MOD 8, MOD 9, MOD 10, MOD 11, MOD 12, MOD 13, MOD 14 and MOD 15
--------------------------	--

In Schedule 2: Administrative Conditions:

3. Inserting new Condition 2p) after Condition 2o) as follows:

2p) modification request MP 06_0228 (MOD 15), accompanying Environmental Assessment and plans dated February 2018 and updated plans dated 9 May 2018, prepared by Cowman Stoddart Pty Ltd (see Appendix 2O).

In Schedule 3: Specific Environmental Conditions:

4. Inserting a new Condition 10B after Condition 10A as follows:

Cooling Tower – MOD 15

10B) The Proponent shall install, register and maintain cooling towers in accordance with the *Public Health Act 2010*.

5. Inserting a new Condition 26H after Condition 26G as follows:

Works on Waterfront Land

26H) The Proponent must ensure works within 40 metres of the Shoalhaven River bank are undertaken in accordance with the Guidelines for Controlled Activities on Waterfront Land 2012.

6. Inserting a new Condition 32A after Condition 32 as follows:

32A) Prior to the commencement of construction of MOD 15, the Proponent must delineate truck parking areas on the Dairy Farmers site to ensure adequate space is provided for trucks accessing the carbon dioxide plant.

7. Inserting new Condition 20F after Condition 20E as follows:

20F) The Proponent must update the unexpected finds protocol required by condition 20B to include procedures to manage material containing bonded asbestos. The Proponent shall remove asbestos containing materials in accordance with the requirements of Condition 9B in Schedule 2.

8. Inserting the following bullets at the end of the bulleted list in Condition 36c:

- evaluate and confirm automatic isolation, both local and remote for carbon dioxide iso-container loadout.

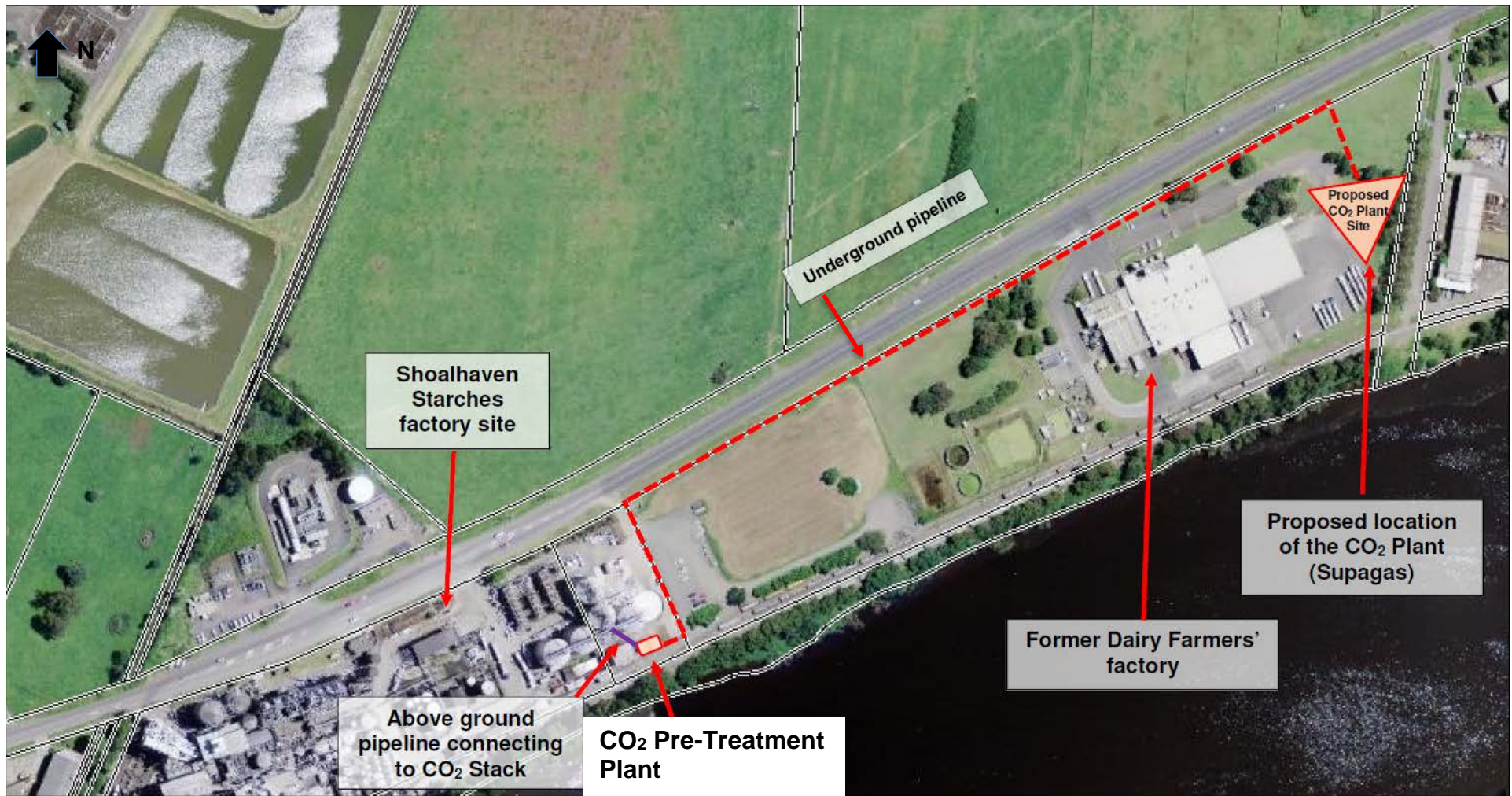
9. Inserting new Condition 46C after Condition 46B as follows:

46C) The Proponent must plant screening vegetation in front of the carbon dioxide plant at the Dairy Farmers site, no later than 31 December 2018.

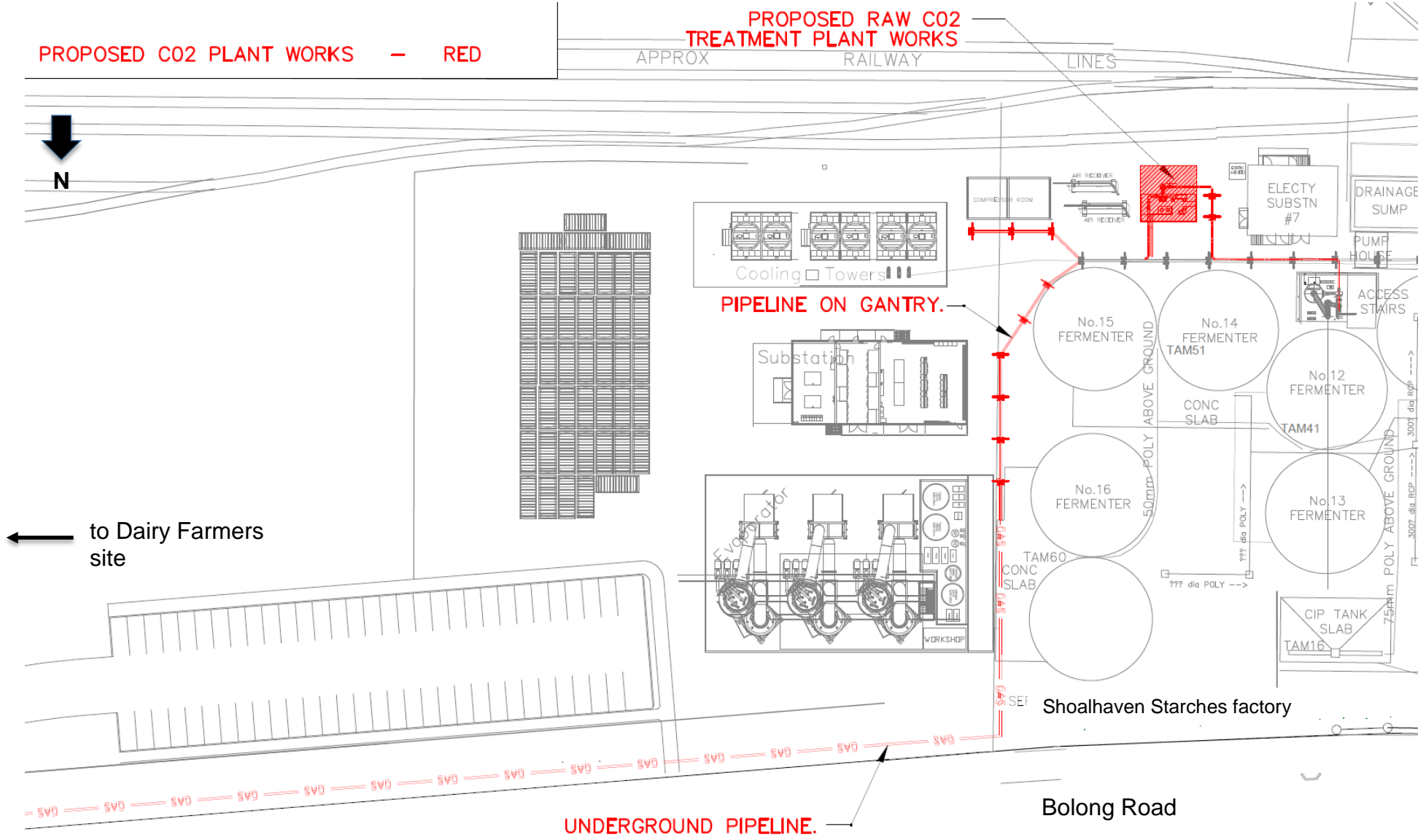
In the Appendices:

27. Inserting a new Appendix 2O after Appendix 2N as follows:

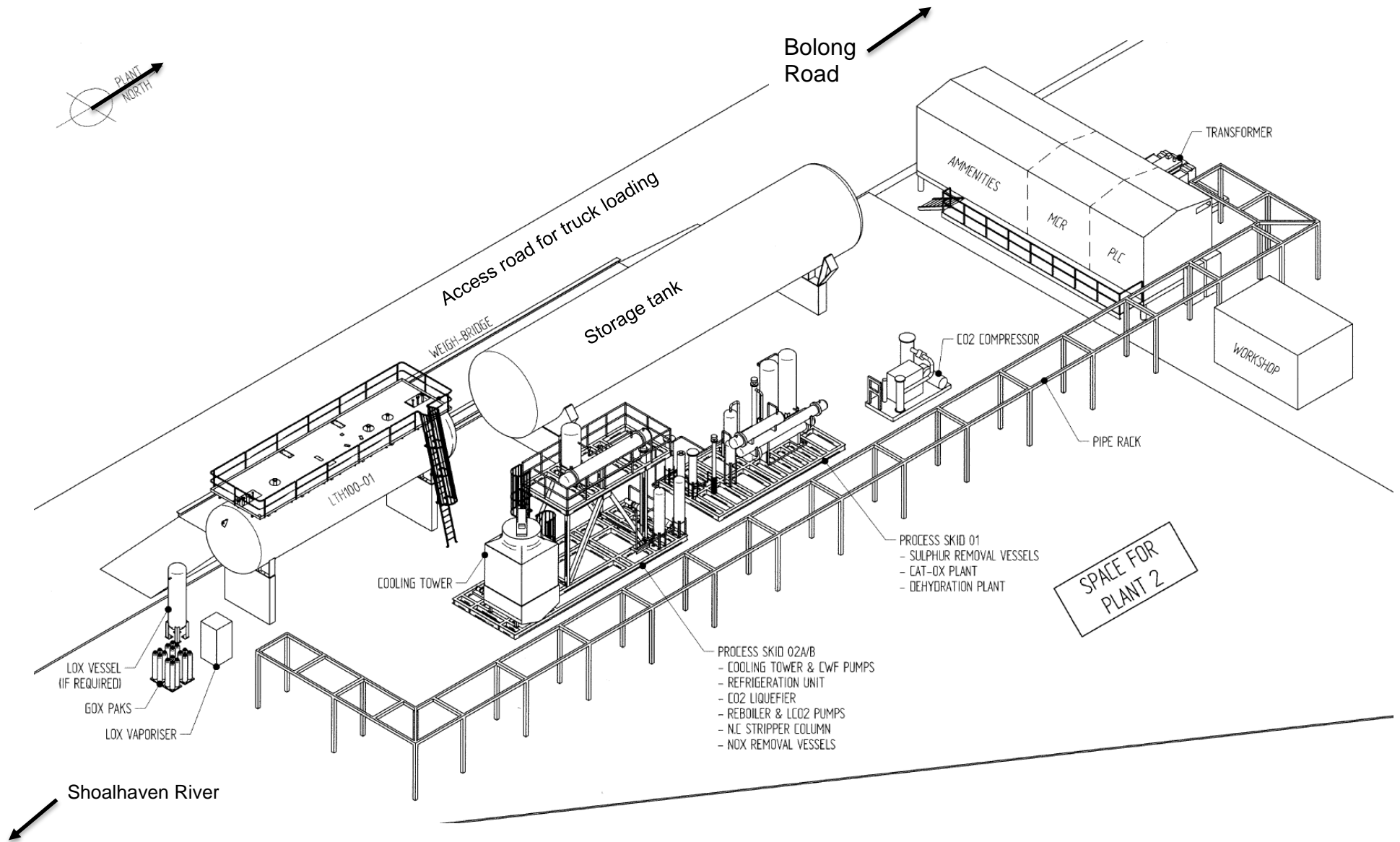
APPENDIX 20 – SITE PLANS (MP 06_0228 MOD 15)



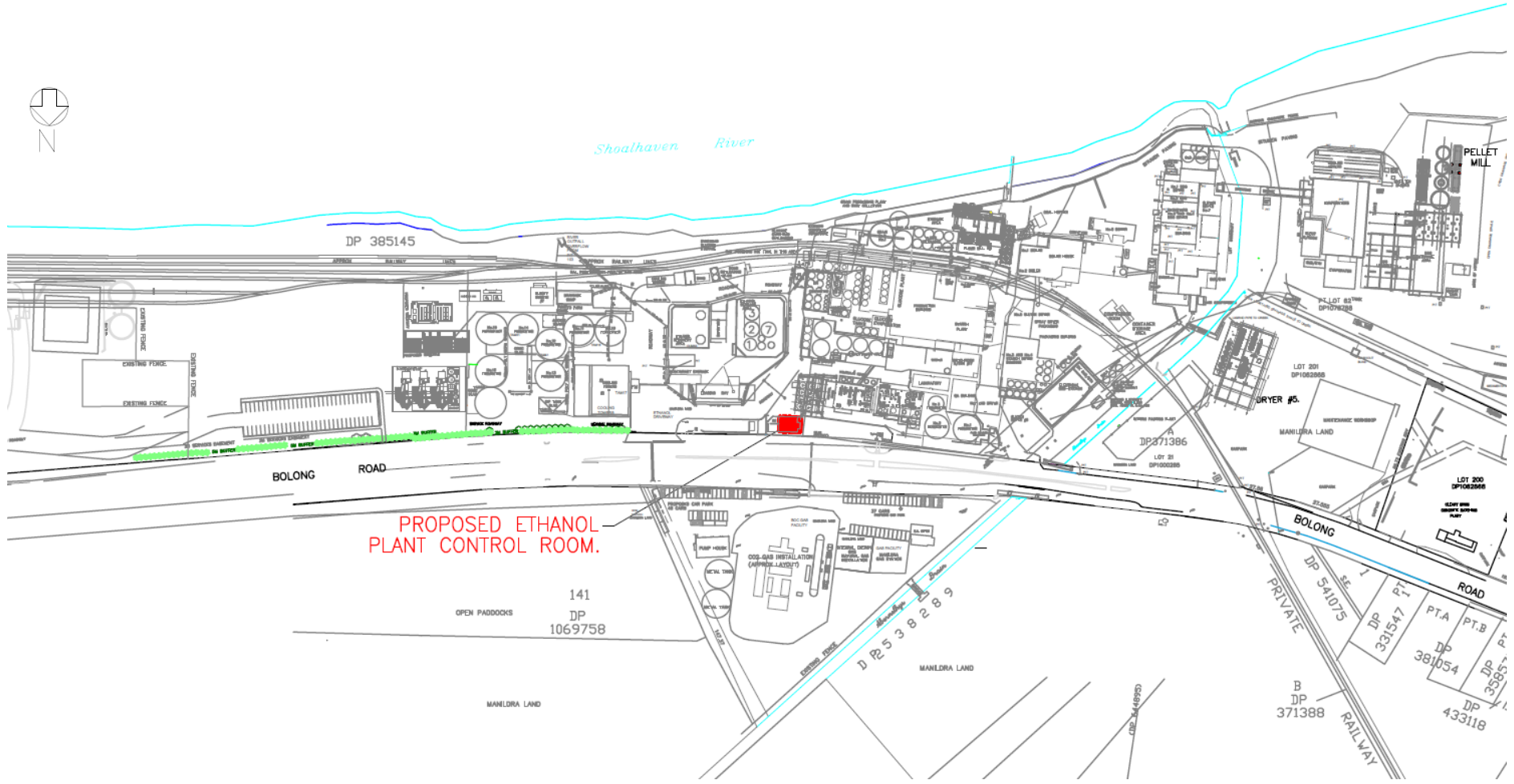
Location of Main CO₂ Plant, Pre-Treatment Plant and Pipelines



Key Components of Carbon Dioxide Pre-Treatment Plant on the Factory Site

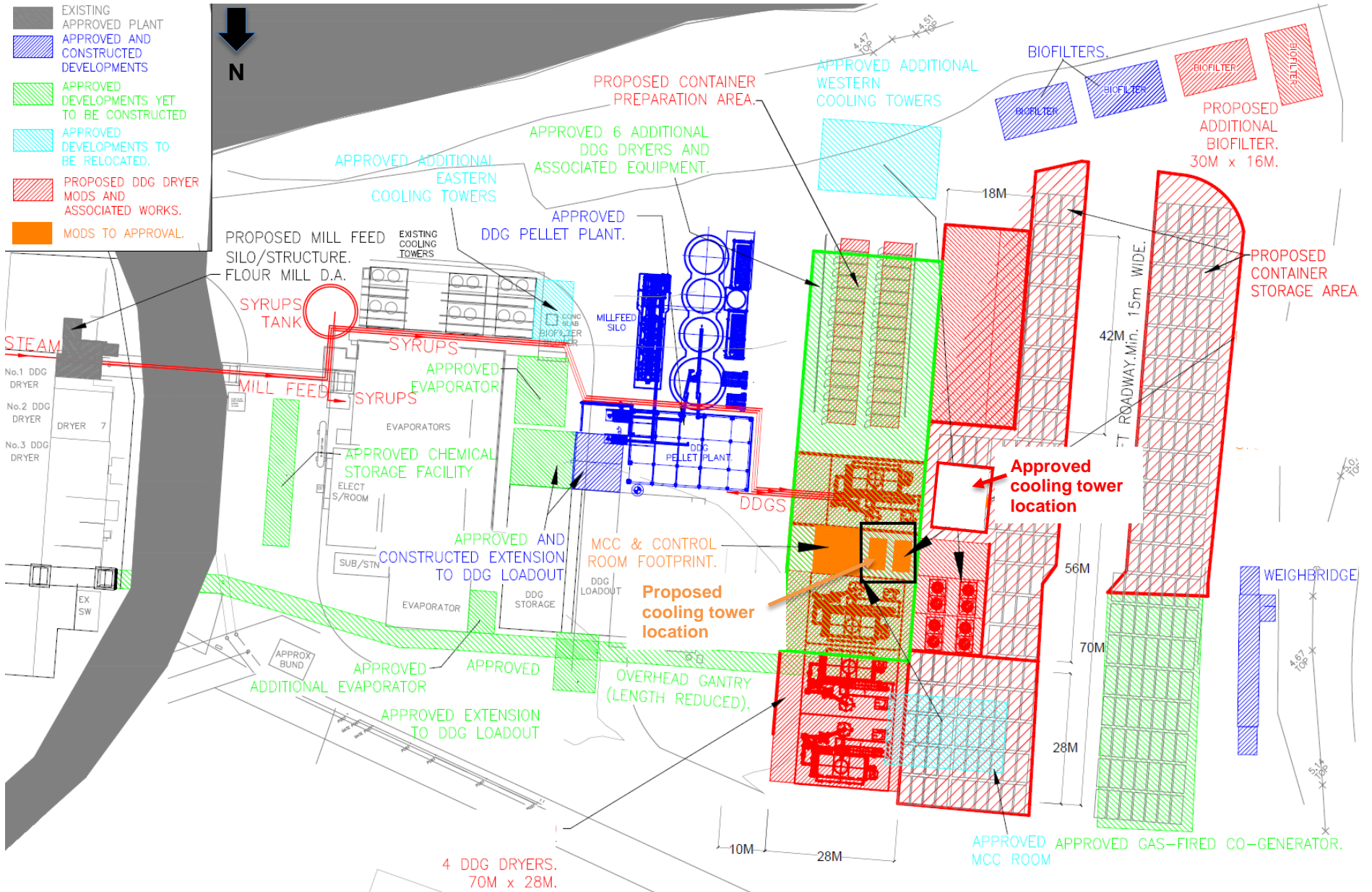


Main Carbon Dioxide Processing Plant at the Dairy Farmers Site



PROPOSED ETHANOL
PLANT CONTROL ROOM.

Ethanol Plant Control Room



Relocation of Cooling Towers at Dried Distillers Grain Plant