



LEGEND

- SITE BOUNDARY
- MEAN HIGH WATER MARK
- 100M SETBACK FROM MEAN HIGH WATER MARK
- 20.0 EXISTING CONTOUR
- EXISTING MANGROVE COMMUNITY
- EXISTING VEGETATION (AERIAL BACKGROUND)
- PROPOSED PARK
- PROPOSED SPORTS FIELDS PARK
- PROPOSED WATER QUALITY PONDS
- PROPOSED BIOFILTRATION
- FORESHORE RESERVE PATHWAY
- CULBURRA ROAD PATHWAY
- PEDESTRIAN BRIDGE
- PROPOSED FEATURE TREE
- STREET TREES

INDICATIVE PLANT LIST

STREETSCAPE

Symbol	Botanical Name	Common Name
--------	----------------	-------------

STREET TREES

	<i>Banksia integrifolia</i>	Coast Banksia
	<i>Calistemon salignus</i>	Willow Bottlebrush
	<i>Hibiscus tiliaceus Rubra</i>	Native Hibiscus
	<i>Melaleuca linariifolia</i>	Snow in Summer

ENTRY AVENUE

	<i>Leptospermum confertus</i>	Brush Box
	<i>Corymbia maculata</i>	Spotted Gum

PARKS

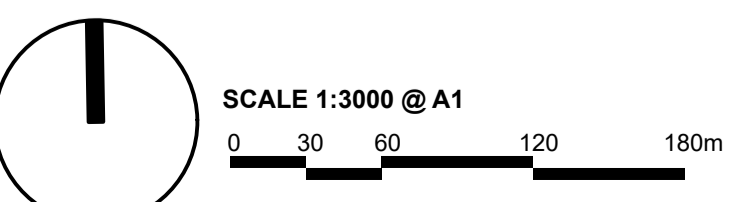
Symbol	Botanical Name	Common Name
--------	----------------	-------------

TREES

	<i>Banksia integrifolia</i>	Coast Banksia
	<i>Banksia serrata</i>	Old Man Banksia
	<i>Corymbia gummifera</i>	Red Bloodwood
	<i>Melaleuca quinquenervia</i>	Broad Leaved Paperbark
	<i>Podocarpus elatus</i>	Illawarra Plum Pine

GROUNDCOVERS AND GRASSES

	<i>Convolvulus mauritanicus</i>	Bindweed
	<i>Carpobrotus 'White Hot'</i>	White Pig Face
	<i>Dianella 'Wyeena'</i>	Variegated Dianella
	<i>Lomandra 'Lime Tuff'</i>	Dwarf Lomandra
	<i>Lomandra 'Nivalis'</i>	Dwarf Lomandra
	<i>Phragmites 'Aussie Flat Bush'</i>	Prostrate salt bush
	<i>Themeda 'Wingo'</i>	Prostrate Kangaroo Grass



Landscape Context Plan

Project: 19-039W West Culburra Subdivision
Client: Sealark Pty Ltd
Date: 15.10.2020
Revision: H
Drawn: BH
Checked: IB

TaylorBrammer
 TAYLOR BRAMMER LANDSCAPE ARCHITECTS PTY LTD
 SOUTH COAST OFFICE
 26 Moore Street, NSW, 2515 E southcoast@taylorbrammer.com.au
 Copyright © Taylor Brammer Landscape Architects Pty Ltd.

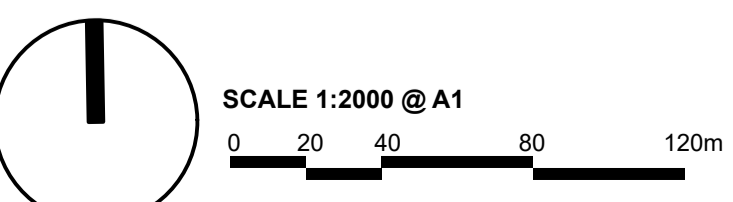


DESIGN NOTES

- 1 Tree lined boulevard entry
- 2 Feature tree to roundabout
- 3 Native coastal street tree planting
- 4 Public park amongst existing bushland with selective retention of existing trees where possible
- 5 Public park set amongst trees adjacent to water quality basin with selective retention of existing trees where possible
- 6 Pedestrian links
- 7 Emergency bushfire egress
- 8 Public park set amongst existing trees with selective retention of existing trees where possible
- 9 Industrial lot development
- 10 Sports field parkland with selective retention of existing trees where possible
- 11 Pedestrian link to connect to foreshore reserve pathway
- 12 Foreshore pedestrian pathway
- 13 Entry avenue to sports park and mixed use residential
- 14 Small street tree planting to integrated housing lots'
- 15 Start of foreshore reserve path with potential for interpretation and connection to Culburra township.
- 16 Entry feature in road reserve
- 17 Pedestrian link to Culburra Town Centre
- 18 Sports fields park
- 19 Pathway/drainage easement connection to public park

LEGEND

- SITE BOUNDARY
- MEAN HIGH WATER MARK
- 100M SETBACK FROM MEAN HIGH WATER MARK
- 20.0 EXISTING CONTOUR
- EXISTING MANGROVE COMMUNITY
- EXISTING VEGETATION (AERIAL BACKGROUND)
- PROPOSED PARK
- PROPOSED SPORTS FIELDS PARK
- PROPOSED WATER QUALITY PONDS
- PROPOSED BIOFILTRATION
- FORESHORE RESERVE PATHWAY
- CULBURRA ROAD PATHWAY
- PEDESTRIAN BRIDGE
- PROPOSED FEATURE TREE
- STREET TREES



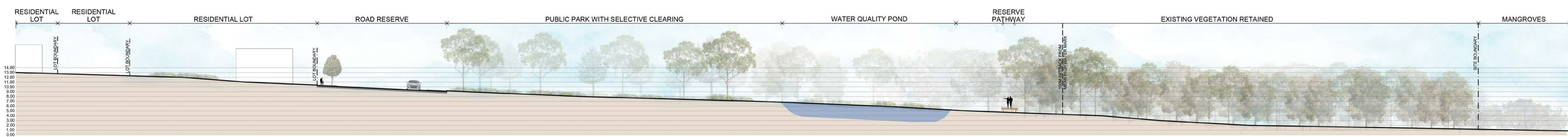
Landscape Concept Plan

Project: 19-039W West Culburra Subdivision
Client: Sealark Pty Ltd
Date: 15.10.2020
Revision: H
Drawn: BH
Checked: IB

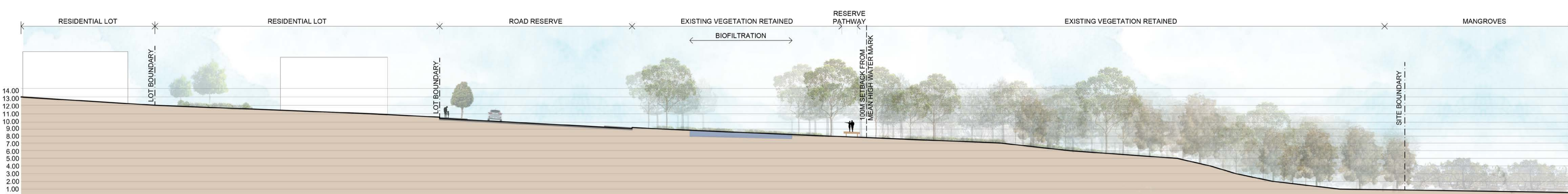
TaylorBrammer
 TAYLOR BRAMMER LANDSCAPE ARCHITECTS PTY LTD
 SOUTH COAST OFFICE
 26 Moore Street, NSW, 2515 E southcoast@taylorbrammer.com.au T 61 2 4287 5088
 Copyright of Taylor Brammer Landscape Architects Pty Ltd. AEN 61 028 724 988



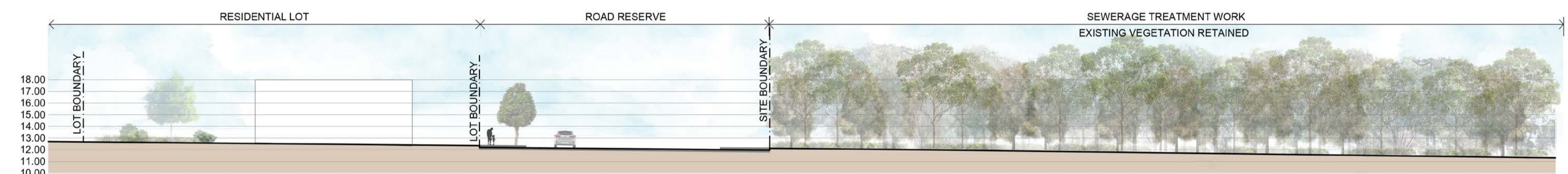
SECTION AA
1:250@A1



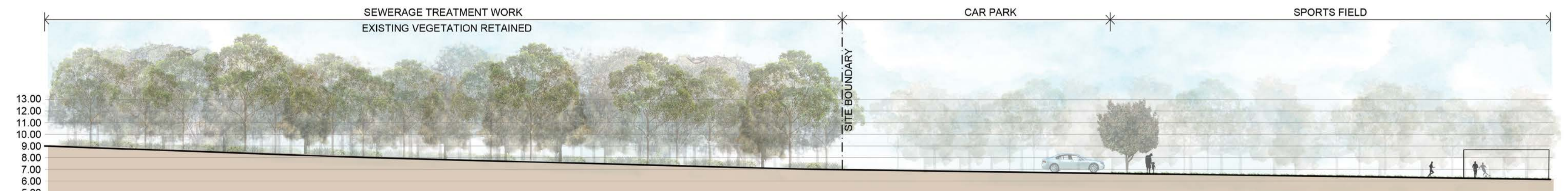
SECTION BB
1:400@A1



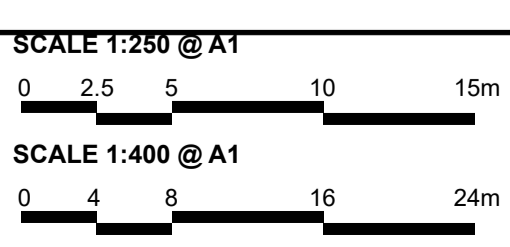
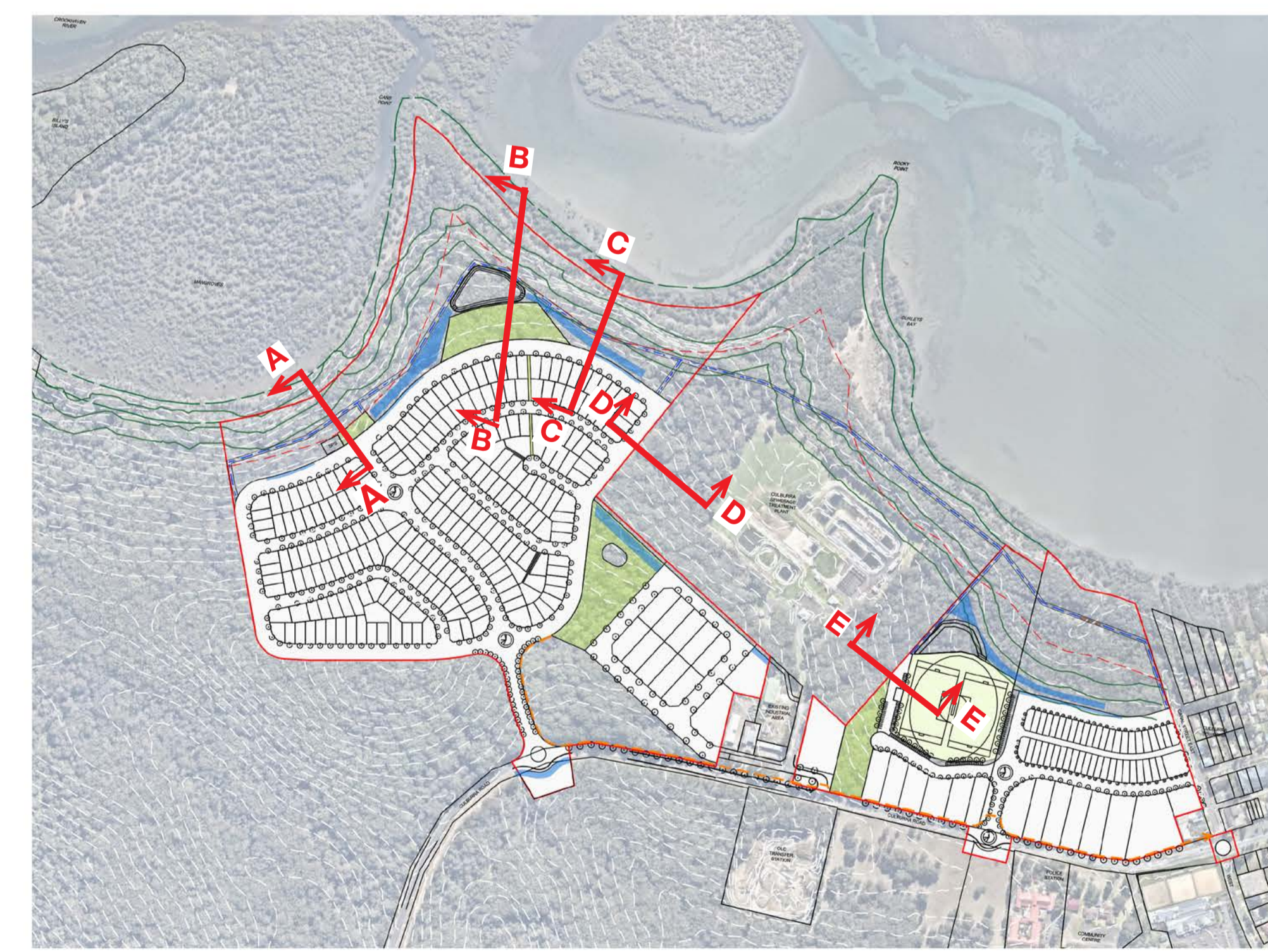
SECTION CC
1:250@A1



SECTION DD
1:250@A1



SECTION EE
1:250@A1



Landscape Cross Sections

Project: 19-039W West Culburra Subdivision
Client: Sealark Pty Ltd
Date: 15.10.2020
Revision: H
Drawn: BH
Checked: IB

TaylorBrammer
 TAYLOR BRAMMER LANDSCAPE ARCHITECTS PTY LTD
 SOUTH COAST OFFICE
 26 Moore Street, NSW, 2515 E southcoast@taylorbrammer.com.au T 61 2 4287 5088
 Copyright of Taylor Brammer Landscape Architects Pty Ltd. AEN 61 028 724 988