

Macarthur Memorial Park Masterplan

ST ANDREWS ROAD, VARROVILLE



- EXISTING CPW TREES
- PROPOSED STREET TREES
- PROPOSED CPW TREES
- LOW SCREEN PLANTING
- LAWN AND EXISTING CONTOURS
- ECOLOGICAL AREAS (moist shale woodland, cumberland plain woodland and riparian zones)
- DAM
- EXISTING AND PROPOSED WATERCOURSES
- PROPOSED ROADS AND CARPARKS
- GATEWAY SCULPTURE
- SCULPTURE
- PROPOSED HERITAGE CURTILAGE
- NO BUILD AREA
- PUBLIC OPEN SPACE

Issue:	Rev:	Description:	Date:
DA		COUNCIL	18.09.2017

Project title:
MACARTHUR MEMORIAL PARK
VARROVILLE

Drawing title:
SITE MASTERPLAN

Principal consultant:	Client:
Florence Jaquet Landscape architect	Macarthur Memorial Park Council of the Shire of Macarthur
A: 8 Rowell Avenue, Camberwell 3124 E: flo@fja.com.au M: 0410 983 041	
Job no: 1210	
Drawn by: OK	
Checked by: FJ	
Scale: 1:2500	Drw no: L100
CAD file name: L100 OVERALL SITE PLAN.dwg	
Plot date: 18/09/2017	Sheet no: 02

9. STAGING

STAGE 1 (From 2019 to 2104)

- All buildings and services constructed.
- Outbuildings restoration.
- Entrances A to C.
- All roads within Stage 1 only (to the extent permissible under Bushfire Regulation).
- All landscaping and furniture within Stage 1.
- Shelters as required.
- The rest of the site remains UNCHANGED.

STAGE 2 (From 2105 to 2130)

- All roads within Stage 2 only
- All landscaping and furniture within Stage 2.
- Shelters as required.
- The rest of the site remains UNCHANGED.

STAGE 3 (From 2131 to 2140)

- All roads within Stage 3 only
- All landscaping and furniture within Stage 3.
- Shelters as required.
- The rest of the site remains UNCHANGED.

STAGE 4 (From 2141 to 2155)

- All roads within Stage 4 only
- All landscaping and furniture within Stage 4.
- Shelters as required.
- Entrance D
- The rest of the site remains UNCHANGED.

STAGE 5 (From 2156 to 2170)

- All roads within Stage 5.
- All landscaping and furniture within Stage 5.
- Shelters as required.

The above stages are based on current statistical information and projections.



7. DESIGN ELEMENTS

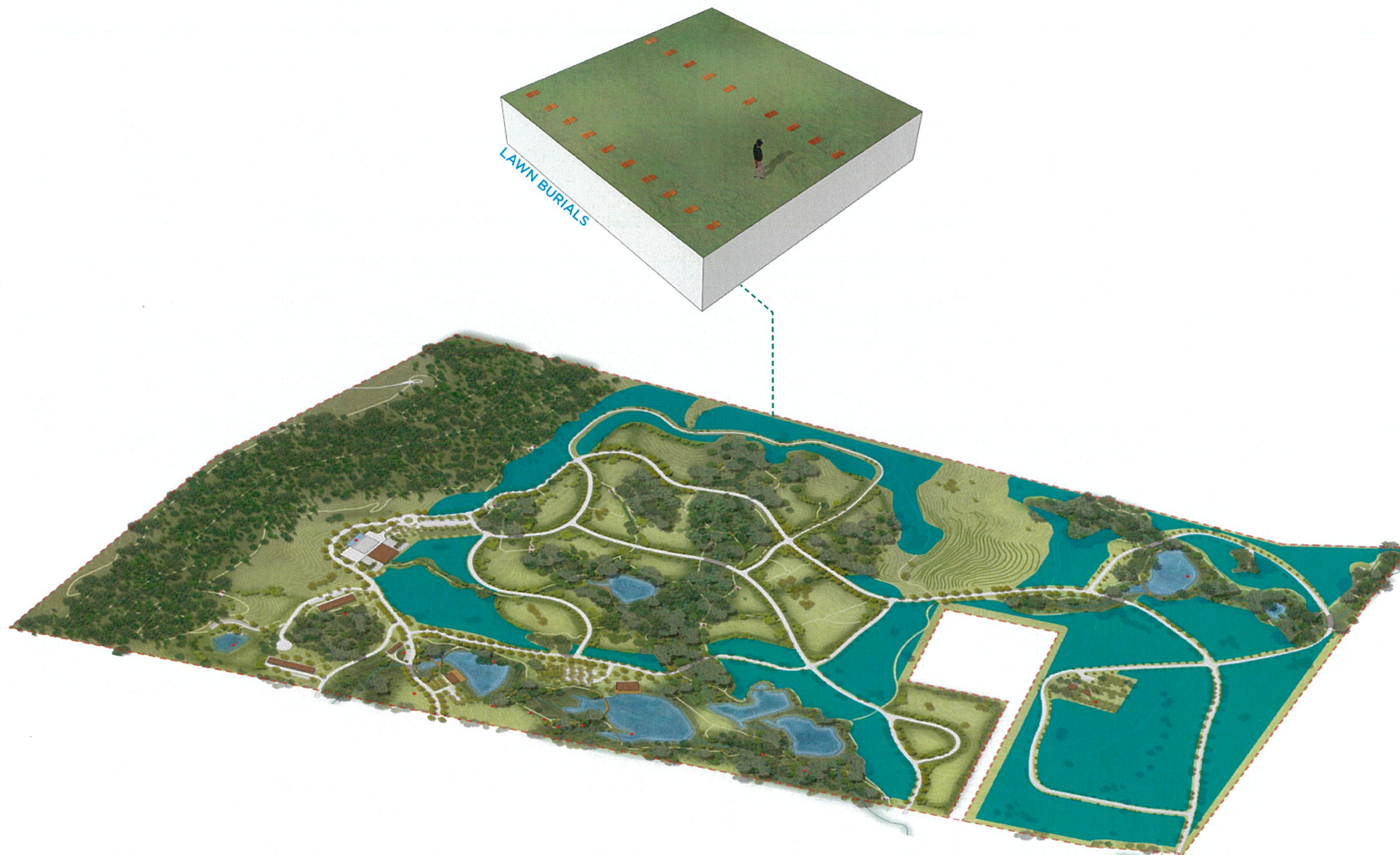
7.5 LAWN BURIALS

DESIGN PRINCIPLES

- Contemporary
- Respect visual quality of the site
- In harmony with the environment

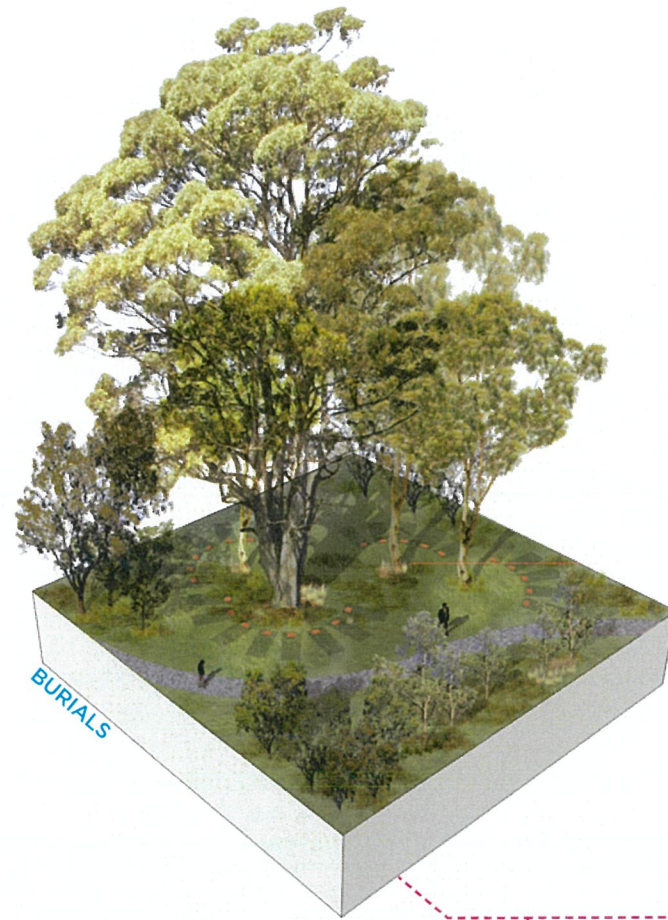
RATIONALE

- Memorialisation only allowed as a plaque flush with lawn.
- Concealed concrete beams below ground (necessary to avoid subsidence)
- Minimise visual impact of cemetery from the main road.
- Generally, grave rows follow existing contouring of the land.
- Re-grading only where localised water ponding may occur.
- Provide occasional specimen tree for shade and respite.



7. DESIGN ELEMENTS

7.6 NATURAL BURIALS



DESIGN PRINCIPLES

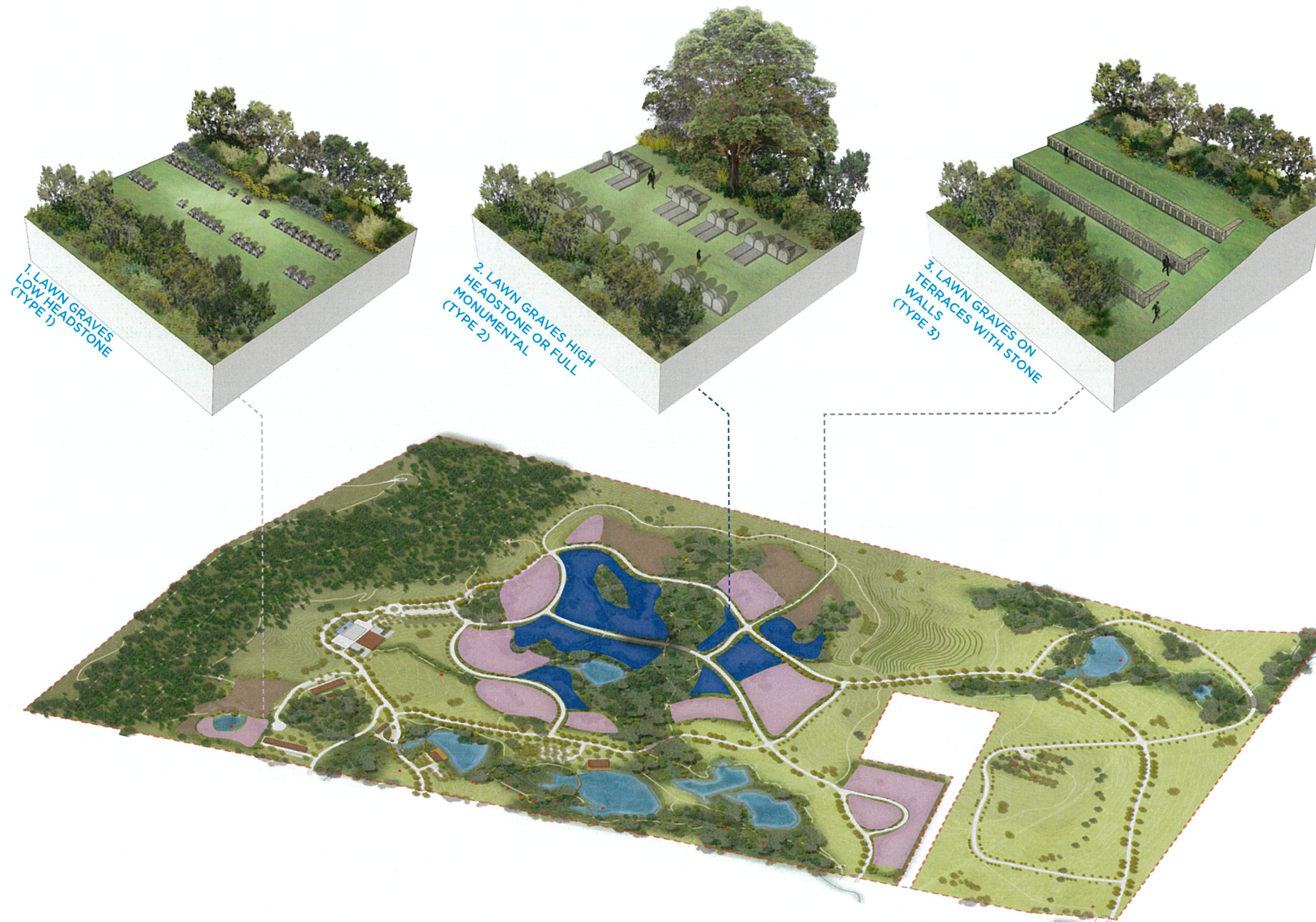
- Unique
- Contemporary
- Respect visual quality of the site
- Respect mourning process
- In harmony with the environment

RATIONALE

- Chemical free and 100% biodegradable coffin or shroud.
- Biodegradable grave markers (wood) or none.
- Grave location to be recorded and marked with steel pegs in the ground (traceable with metal detector).
- Double depth of burial allowed.
- Set within an existing pocket of Cumberland Plain Woodland (CPW).
- First natural (green) burial set in CPW.
- Low impact on existing root space system.
 - Grave plots to radiate out of the SRZ to minimise root damage (running in same direction as structural roots). Only 5 burials allowed around each tree per 5 years period to allow for root regeneration.
 - Ash interment to be limited in numbers and buried in the Structural Root Zone (SRZ). Only requires a small 300mm deep hole.
- Restore grave surface with site topsoil and plant species.
- Bushland setting with denser perimeter plantings for privacy.

7. DESIGN ELEMENTS

7.7 BURIAL ROOMS



DESIGN PRINCIPLES

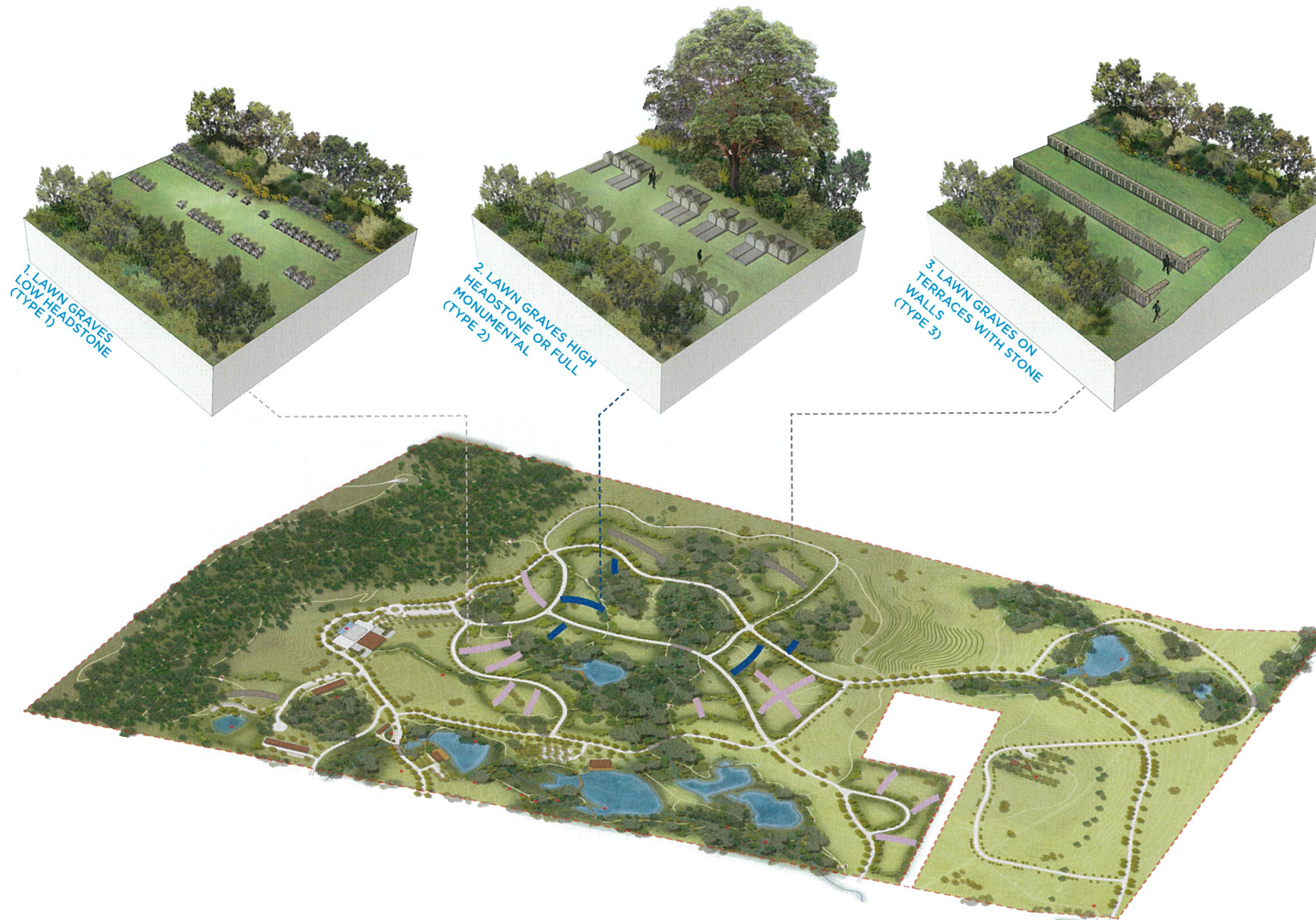
- Unique
- Contemporary
- Respect visual quality of the site
- Respect mourning process
- In harmony with the environment

RATIONALE

- Minimise visual impact of cemetery from the main internal and external roads, Campbelltown township, Varroville house and Hume highway.
- Create "burial rooms" to conceal all headstones and memorialisation from the main roads and Varroville house.
- Provide screening in the form of native planting of varying height, ensuring the planting blends into the existing rural and CPW landscape.
- Avoid using exotic tree species which may clash with heritage landscape.
- Set the "burial rooms" against the backdrop of the existing and future CPW zones.
- Provide 3 types of "burial rooms":
 1. Lawn graves
Low headstones (700mm max) on concrete beams in a lawn setting (Type 1).
 2. Lawn graves
High headstones (1.2m high max) on concrete beam or full monumental (Type 2).
 3. Lawn graves on terraces
Stone retaining walls with headstones recessed into wall face (Type 3).
- Provide ash memorialisation options within each "burial room", typically located along the edge of the screen planting (internally only). (Refer to Ash Interments for more details)

7. DESIGN ELEMENTS

7.8 BURIAL SUB-ROOMS



DESIGN PRINCIPLES

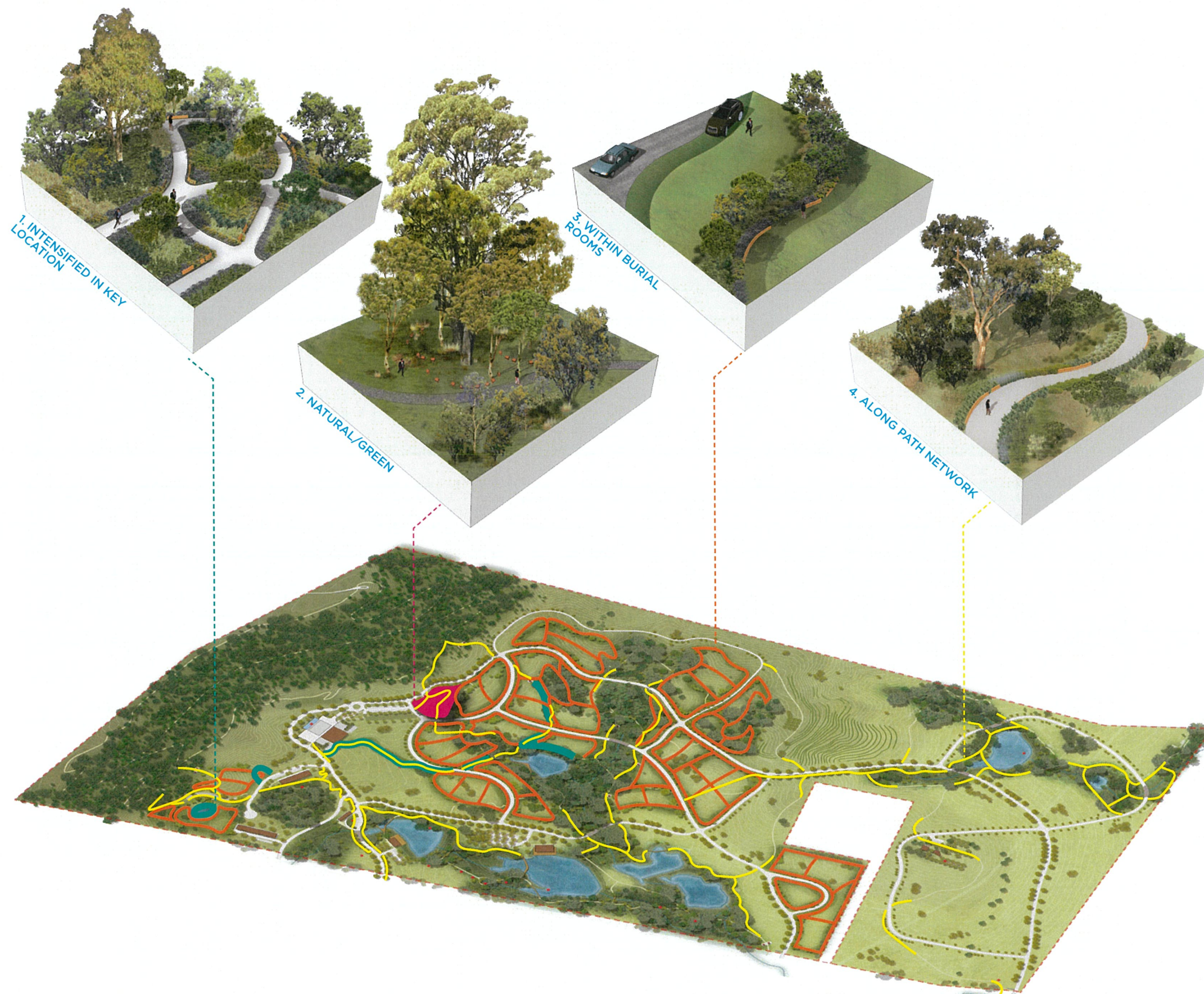
- Unique
- Contemporary
- Respect visual quality of the site
- Respect mourning process
- In harmony with the environment

RATIONALE

- Within each burial room, sub-divide into small spaces using separation planting of max 1.8m height.
- Provide privacy for mourners in a smaller, more human scale space.
- Allow views through in places for passive policing.
- Each sub-burial room will host between 750 and 1200 grave positions.
- Allocation of room to each cultural or religious group will be dependent on demand over the 150 years life of the cemetery.

7. DESIGN ELEMENTS

7.9 ASH INTERMENTS



DESIGN PRINCIPLES

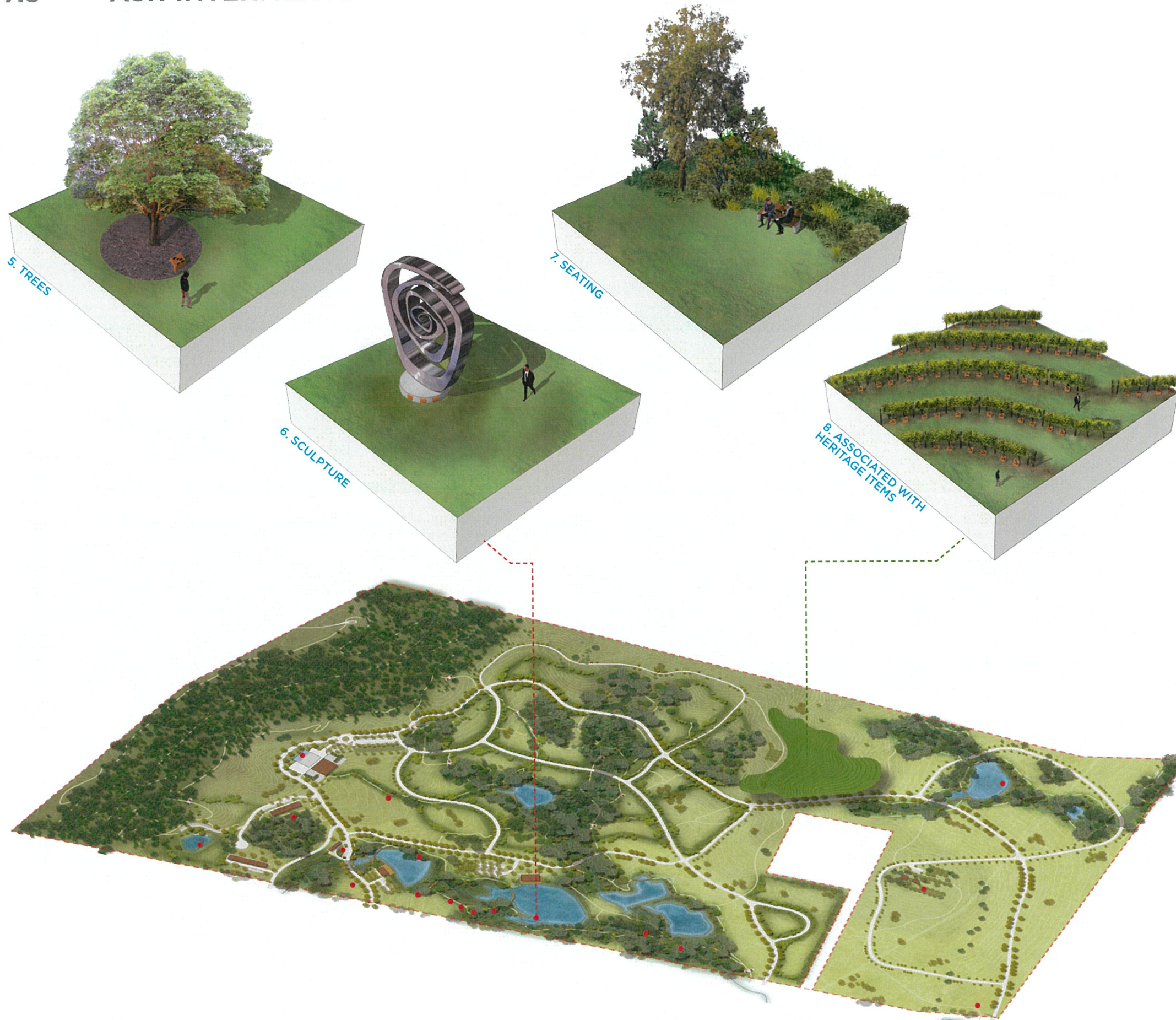
- Unique
- Contemporary
- Respect visual quality of the site
- Respect mourning process
- In harmony with the environment
- In line with design narrative
- Sculptural

RATIONALE

- Minimise visual impact of cemetery from the main internal and external roads.
- Provide new and sculptural designs in keeping with design rationale.
- Complimentary to the 'Park-like' setting and public activities within.
- Provide a variety of 'Ash interment option' varying in prices, aesthetics and cultural relevance:
 1. Within 'Memorial Gardens' which are more compactly laid out. Memorialisation will be more intensified in key location. Each garden will have a theme.(native, colour, scented, music...)
 2. Natural/green burial, biodegradable markers, set only within the Structural Root Zone (SRZ) of existing and proposed trees.
 3. Within the burial rooms and sub-rooms, typically located along the edge of the screen planting's garden beds (internally only). Along all path networks which are within 50m of a road. Memorialisation will be more sculptural to compliment the 'park-like' setting as these paths will also be used for recreation.
 4. Along all path networks which are within 50m of a road. Memorialisation will be more sculptural to compliment the 'park-like' setting as these paths will also be used for recreation.

7. DESIGN ELEMENTS

7.9 ASH INTERMENTS



RATIONALE

5. Associated with a tree
This is particularly appealing to families and couples and ensures long term funding of tree maintenance and replacement.
 6. Associated with a sculpture
This is particularly appealing to families and assists with the long-term maintenance funding.
 7. Associated with seating
 8. Associated with heritage items
Memorialisation is part of an integrated design response to significant heritage items and forms part of the site's adaptive re-use. As such, it ensures a continuing maintenance of these items by allowing income generation within key elements.
- In general, cremation are kept in standard plastic urns and buried in the close proximity of the memorial plaque(behind, in front or below).