

- NOTES:**
1. REFER TO "MACARTHUR MEMORIAL PARK, WSUD STRATEGY AND STORM WATER MANAGEMENT PLAN, STORMY WATER SOLUTIONS, OCTOBER 2018" FOR FULL DETAILS ON THE PROPOSED SYSTEMS.
 2. DAMS 2 AND 4:
PRIMARY FUNCTION: RETENTION FOR HERITAGE
SECONDARY FUNCTIONS: LANDSCAPE AND FLOOD RETENTION
 3. DAMS 3, 5 AND 6:
PRIMARY FUNCTION: RETENTION FOR HERITAGE
SECONDARY FUNCTIONS: LANDSCAPE AND WETLAND TREATMENT
 4. DAM 8:
PRIMARY FUNCTION: RETENTION FOR HERITAGE
SECONDARY FUNCTIONS: LANDSCAPE (NO WSUD FUNCTION)
ALL BURIAL AREAS TO BE BUFFERED BEFORE DISCHARGE INTO DRAINAGE SYSTEMS.

SHEET CONTROL:

1808/SWS/1	SWMS OVERVIEW
1808/SWS/2	DAM 2 AND 3 DETAIL PLAN
1808/SWS/3	DAM 4 DETAIL PLAN
1808/SWS/4	DAM 5 DETAIL PLAN
1808/SWS/5	DAM 6 DETAIL PLAN
1808/SWS/6	DAM 2 AND 4 OUTLET STRUCTURE DETAILS
1808/SWS/7	DAM 3 OUTLET STRUCTURE DETAILS
1808/SWS/8	DAM 5 OUTLET STRUCTURE DETAILS
1808/SWS/9	DAM 6 OUTLET STRUCTURE DETAILS
1808/SWS/10	TYPICAL SECTIONS AND DETAILS

- LEGEND:**
- SITE EXTENTS
 - EXISTING DRAINAGE LINE WITH 1m BASE TO BE VEGETATED AS A TREATMENT SWALE
 - 5% AEP SWALES DESIGNED BY WS&P
 - STREAM ORDER 2 WATERCOURSES TO BE RETAINED (NO TREATMENT ACCOUNTED FOR)
 - DAM 2 AND DAM 4 (FUNCTION AS RETARDING BASINS)
 - DAMS 3, 5 AND 6 (FUNCTION AS TREATMENT WETLANDS)
 - EXISTING 1m SITE CONTOURS
 - PROPOSED WARREN SMITH ROAD LAYOUT
 - PROPOSED BUILDINGS
 - PROPOSED WARREN SMITH DRAINAGE SYSTEM
 - 'TOP OF BANK' AS DEFINED BY TRAVERS BRUSHFIRE AND ECOLOGY
 - 'RIPERIAN ZONE BUFFERS' AS DEFINED BY TRAVERS BRUSHFIRE AND ECOLOGY

DAMS 10 AND 11
NOT PART OF STAGE 1 STRATEGY

DAM 8
FILLED IN WITH EPHEMERAL PLANTS. NO PERMANENT WATER

DRAFT FOR COMMENT	16 OCTOBER 2018
REVISION A	7 NOVEMBER 2018
REVISION	DATE

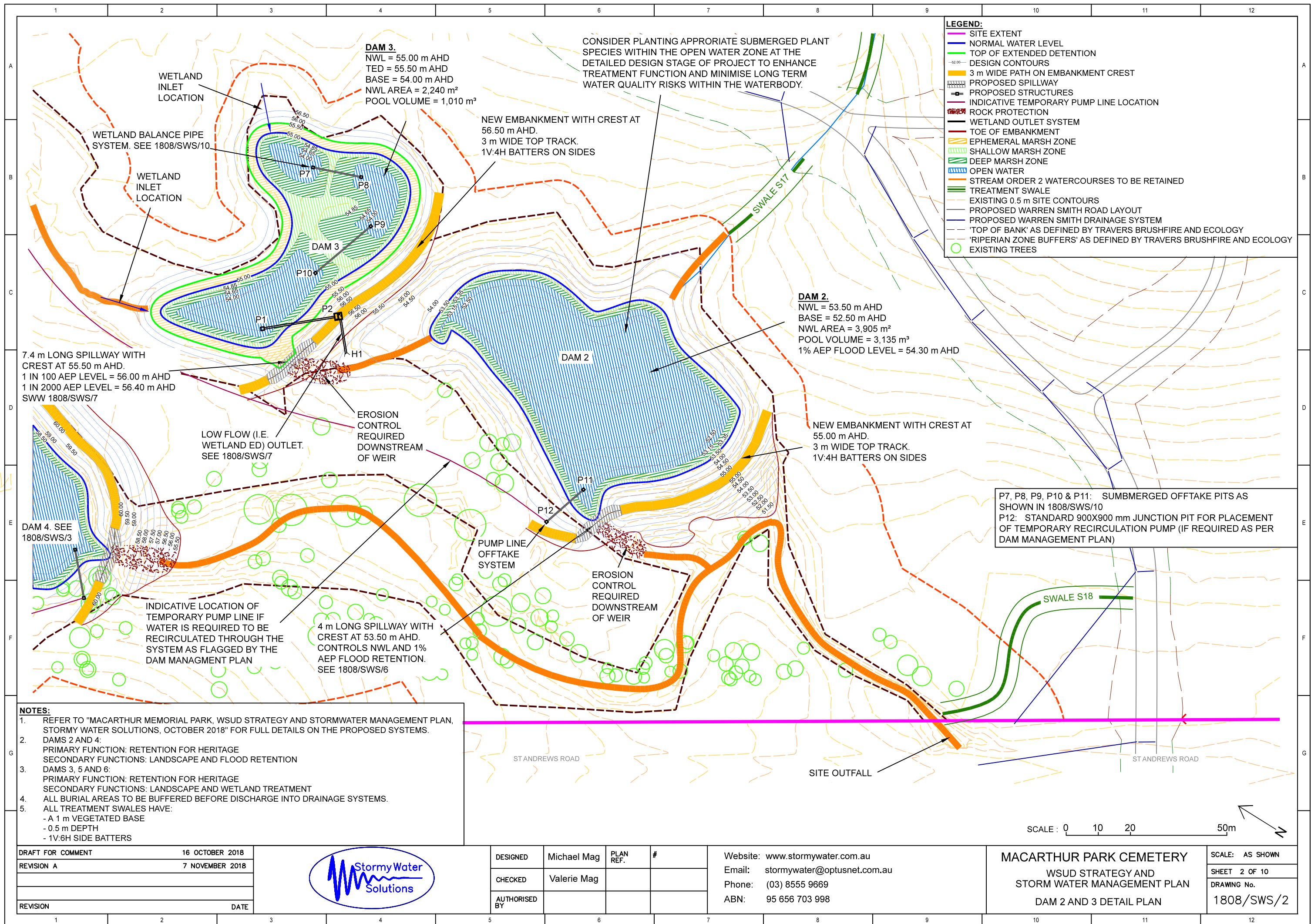


DESIGNED	Michael Mag	PLAN REF.	#
CHECKED	Valerie Mag		
AUTHORISED BY			

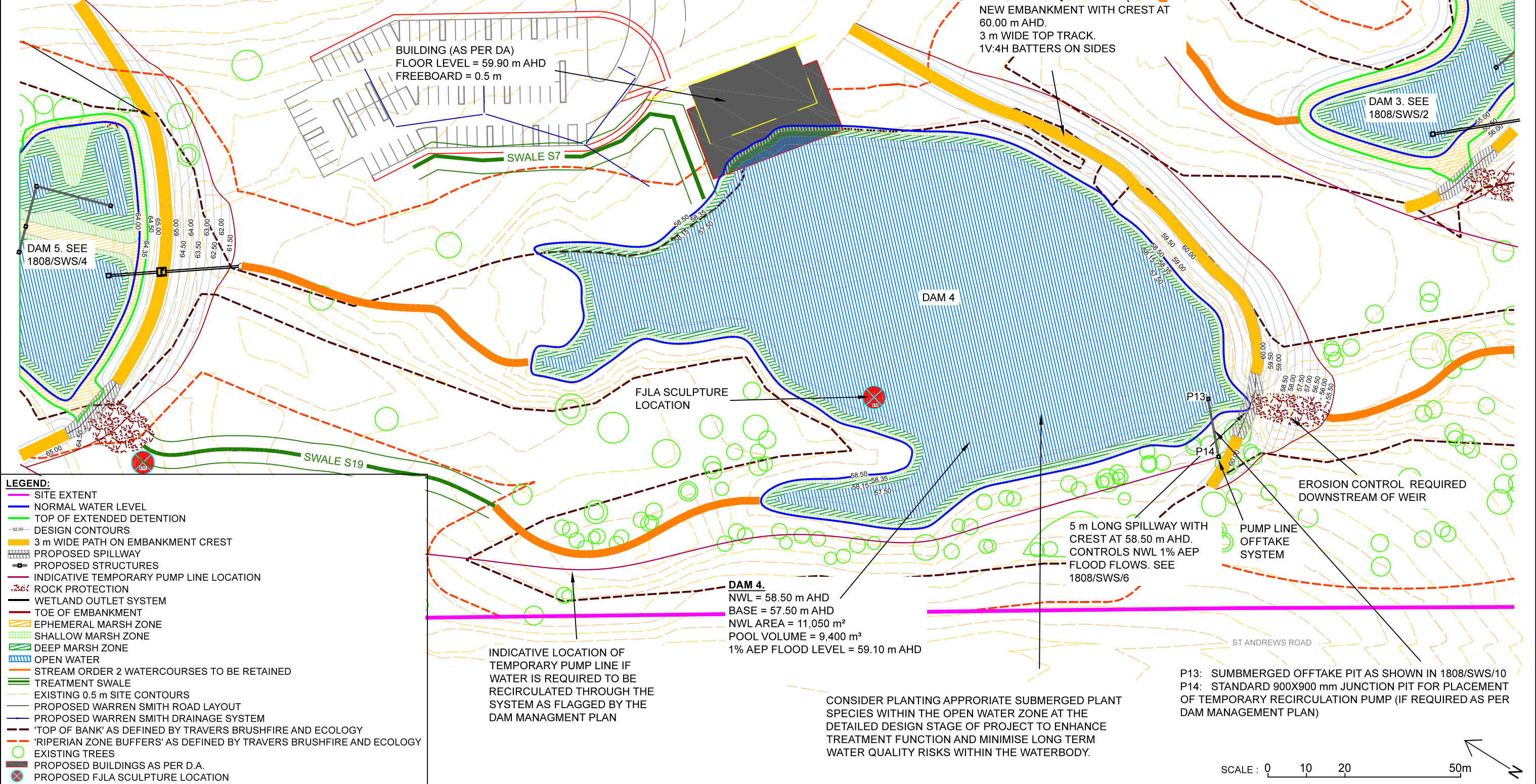
Website: www.stormywater.com.au
Email: stormywater@optusnet.com.au
Phone: (03) 8555 9669
ABN: 95 656 703 998

MACARTHUR PARK CEMETERY
WSUD STRATEGY AND
STORM WATER MANAGEMENT PLAN
OVERVIEW

SCALE: AS SHOWN
SHEET 1 OF 10
DRAWING No. 1808/SWS/1



- NOTES:**
1. REFER TO "MACARTHUR MEMORIAL PARK, WSUD STRATEGY AND STORMWATER MANAGEMENT PLAN, STORMY WATER SOLUTIONS, OCTOBER 2018" FOR FULL DETAILS ON THE PROPOSED SYSTEMS.
 2. DAMS 2 AND 4:
PRIMARY FUNCTION: RETENTION FOR HERITAGE
SECONDARY FUNCTIONS: LANDSCAPE AND FLOOD RETENTION
 3. DAMS 3, 5 AND 6:
PRIMARY FUNCTION: RETENTION FOR HERITAGE
SECONDARY FUNCTIONS: LANDSCAPE AND WETLAND TREATMENT
 4. ALL BURIAL AREAS TO BE BUFFERED BEFORE DISCHARGE INTO DRAINAGE SYSTEMS.
 5. ALL TREATMENT SWALES HAVE:
- A 1 m VEGETATED BASE
- 0.5 m DEPTH
- 1V:6H SIDE BATTERS



DRAFT FOR COMMENT	16 OCTOBER 2018
REVISION A	7 NOVEMBER 2018
REVISION	DATE

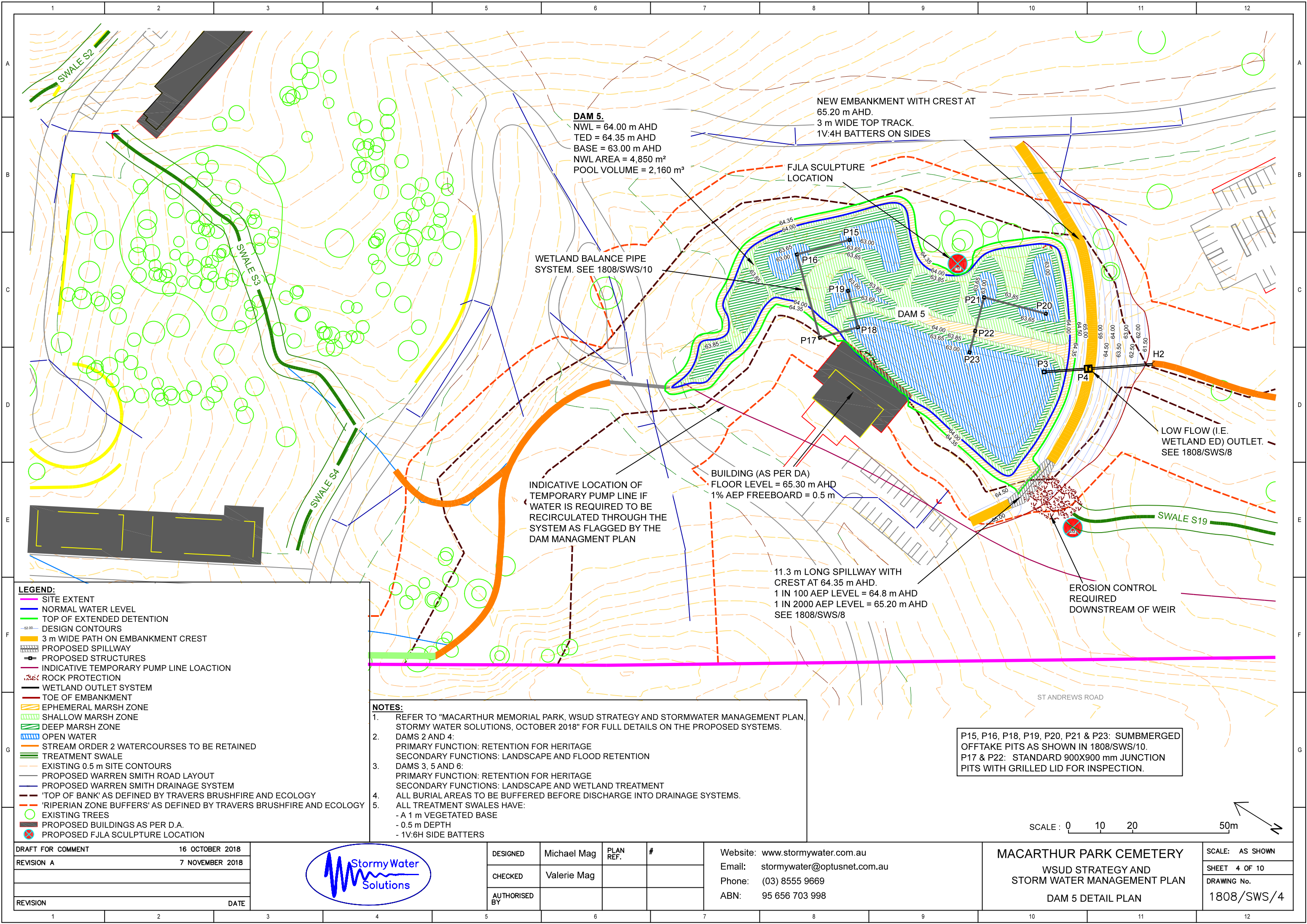


DESIGNED	Michael Mag	PLAN REF.	#
CHECKED	Valerie Mag		
AUTHORISED BY			

Website: www.stormywater.com.au
Email: stormywater@optusnet.com.au
Phone: (03) 8555 9669
ABN: 95 656 703 998

MACARTHUR PARK CEMETERY
WSUD STRATEGY AND
STORM WATER MANAGEMENT PLAN
DAM 4 DETAIL PLAN

SCALE: AS SHOWN
SHEET 3 OF 10
DRAWING No.
1808/SWS/3



- LEGEND:**
- SITE EXTENT
 - NORMAL WATER LEVEL
 - TOP OF EXTENDED DETENTION
 - DESIGN CONTOURS
 - 3 m WIDE PATH ON EMBANKMENT CREST
 - PROPOSED SPILLWAY
 - PROPOSED STRUCTURES
 - INDICATIVE TEMPORARY PUMP LINE LOACTION
 - ROCK PROTECTION
 - WETLAND OUTLET SYSTEM
 - TOE OF EMBANKMENT
 - EPHEMERAL MARSH ZONE
 - SHALLOW MARSH ZONE
 - DEEP MARSH ZONE
 - OPEN WATER
 - STREAM ORDER 2 WATERCOURSES TO BE RETAINED
 - TREATMENT SWALE
 - EXISTING 0.5 m SITE CONTOURS
 - PROPOSED WARREN SMITH ROAD LAYOUT
 - PROPOSED WARREN SMITH DRAINAGE SYSTEM
 - 'TOP OF BANK' AS DEFINED BY TRAVERS BRUSHFIRE AND ECOLOGY
 - 'RIPERIAN ZONE BUFFERS' AS DEFINED BY TRAVERS BRUSHFIRE AND ECOLOGY
 - EXISTING TREES
 - PROPOSED BUILDINGS AS PER D.A.
 - PROPOSED FJLA SCULPTURE LOCATION

- NOTES:**
- REFER TO "MACARTHUR MEMORIAL PARK, WSUD STRATEGY AND STORMWATER MANAGEMENT PLAN, STORMY WATER SOLUTIONS, OCTOBER 2018" FOR FULL DETAILS ON THE PROPOSED SYSTEMS.
 - DAMS 2 AND 4:
PRIMARY FUNCTION: RETENTION FOR HERITAGE
SECONDARY FUNCTIONS: LANDSCAPE AND FLOOD RETENTION
 - DAMS 3, 5 AND 6:
PRIMARY FUNCTION: RETENTION FOR HERITAGE
SECONDARY FUNCTIONS: LANDSCAPE AND WETLAND TREATMENT
 - ALL BURIAL AREAS TO BE BUFFERED BEFORE DISCHARGE INTO DRAINAGE SYSTEMS.
 - ALL TREATMENT SWALES HAVE:
 - A 1 m VEGETATED BASE
 - 0.5 m DEPTH
 - 1V:6H SIDE BATTERS

DRAFT FOR COMMENT	16 OCTOBER 2018
REVISION A	7 NOVEMBER 2018
REVISION	DATE


























DESIGNED	Michael Mag	PLAN REF.	#
CHECKED	Valerie Mag		
AUTHORISED BY			

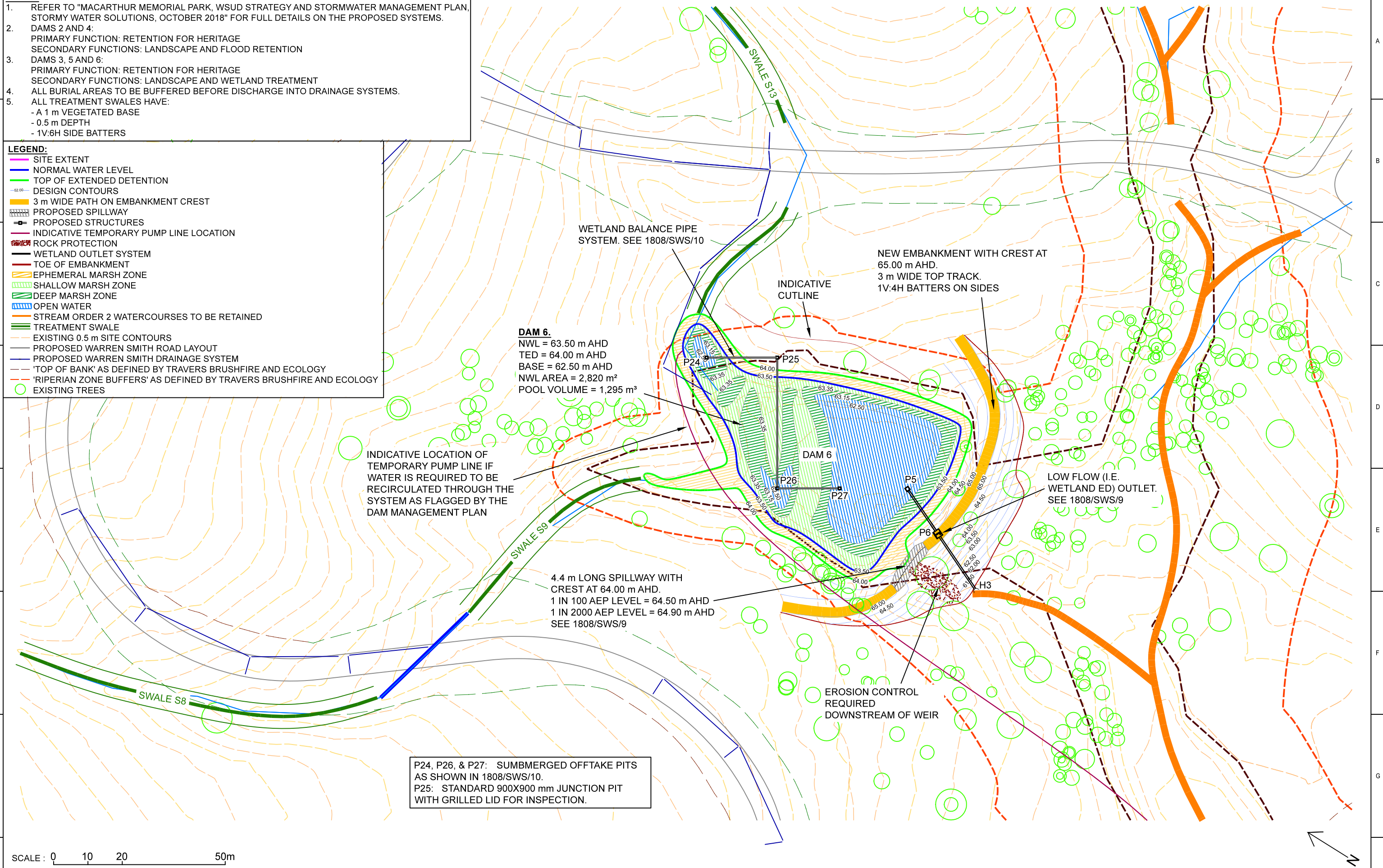
Website: www.stormywater.com.au
Email: stormywater@optusnet.com.au
Phone: (03) 8555 9669
ABN: 95 656 703 998

MACARTHUR PARK CEMETERY
WSUD STRATEGY AND
STORM WATER MANAGEMENT PLAN
DAM 5 DETAIL PLAN

SCALE: AS SHOWN
SHEET 4 OF 10
DRAWING No.
1808/SWS/4

1. REFER TO "MACARTHUR MEMORIAL PARK, WSUD STRATEGY AND STORMWATER MANAGEMENT PLAN, STORMY WATER SOLUTIONS, OCTOBER 2018" FOR FULL DETAILS ON THE PROPOSED SYSTEMS.
2. DAMS 2 AND 4:
PRIMARY FUNCTION: RETENTION FOR HERITAGE
SECONDARY FUNCTIONS: LANDSCAPE AND FLOOD RETENTION
3. DAMS 3, 5 AND 6:
PRIMARY FUNCTION: RETENTION FOR HERITAGE
SECONDARY FUNCTIONS: LANDSCAPE AND WETLAND TREATMENT
4. ALL BURIAL AREAS TO BE BUFFERED BEFORE DISCHARGE INTO DRAINAGE SYSTEMS.
5. ALL TREATMENT SWALES HAVE:
 - A 1 m VEGETATED BASE
 - 0.5 m DEPTH
 - 1V:6H SIDE BATTERS

-  SITE EXTENT
-  NORMAL WATER LEVEL
-  TOP OF EXTENDED DETENTION
-  DESIGN CONTOURS
-  3 m WIDE PATH ON EMBANKMENT CREST
-  PROPOSED SPILLWAY
-  PROPOSED STRUCTURES
-  INDICATIVE TEMPORARY PUMP LINE LOCATION
-  ROCK PROTECTION
-  WETLAND OUTLET SYSTEM
-  TOE OF EMBANKMENT
-  EPHEMERAL MARSH ZONE
-  SHALLOW MARSH ZONE
-  DEEP MARSH ZONE
-  OPEN WATER
-  STREAM ORDER 2 WATERCOURSES TO BE RETAINED
-  TREATMENT SWALE
-  EXISTING 0.5 m SITE CONTOURS
-  PROPOSED WARREN SMITH ROAD LAYOUT
-  PROPOSED WARREN SMITH DRAINAGE SYSTEM
-  'TOP OF BANK' AS DEFINED BY TRAVERS BRUSHFIRE AND ECOLOGY
-  'RIPERIAN ZONE BUFFERS' AS DEFINED BY TRAVERS BRUSHFIRE AND ECOLOGY
-  EXISTING TREES



SCALE : 0 10 20 50m

DRAFT FOR COMMENT	16 OCTOBER 2018
REVISION A	7 NOVEMBER 2018
REVISION	DATE

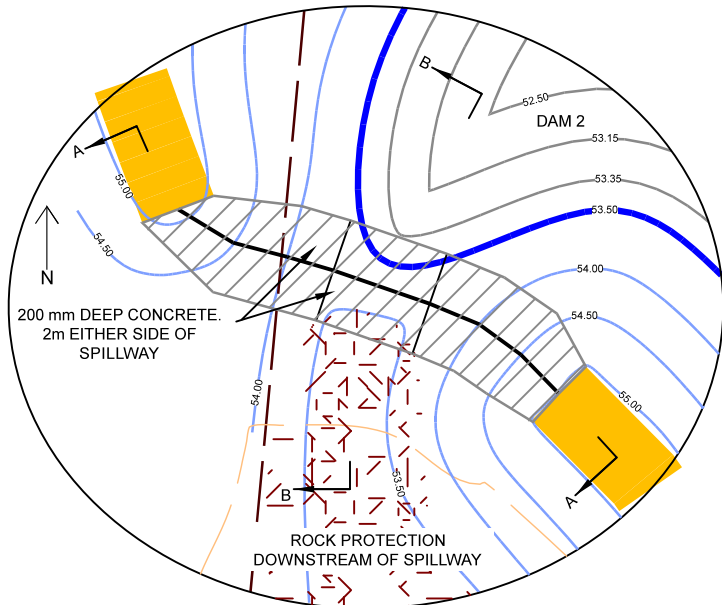


DESIGNED	Michael Mag	PLAN REF.	#
CHECKED	Valerie Mag		
AUTHORISED BY			

Website: www.stormywater.com.au
Email: stormywater@optusnet.com.au
Phone: (03) 8555 9669
ABN: 95 656 703 998

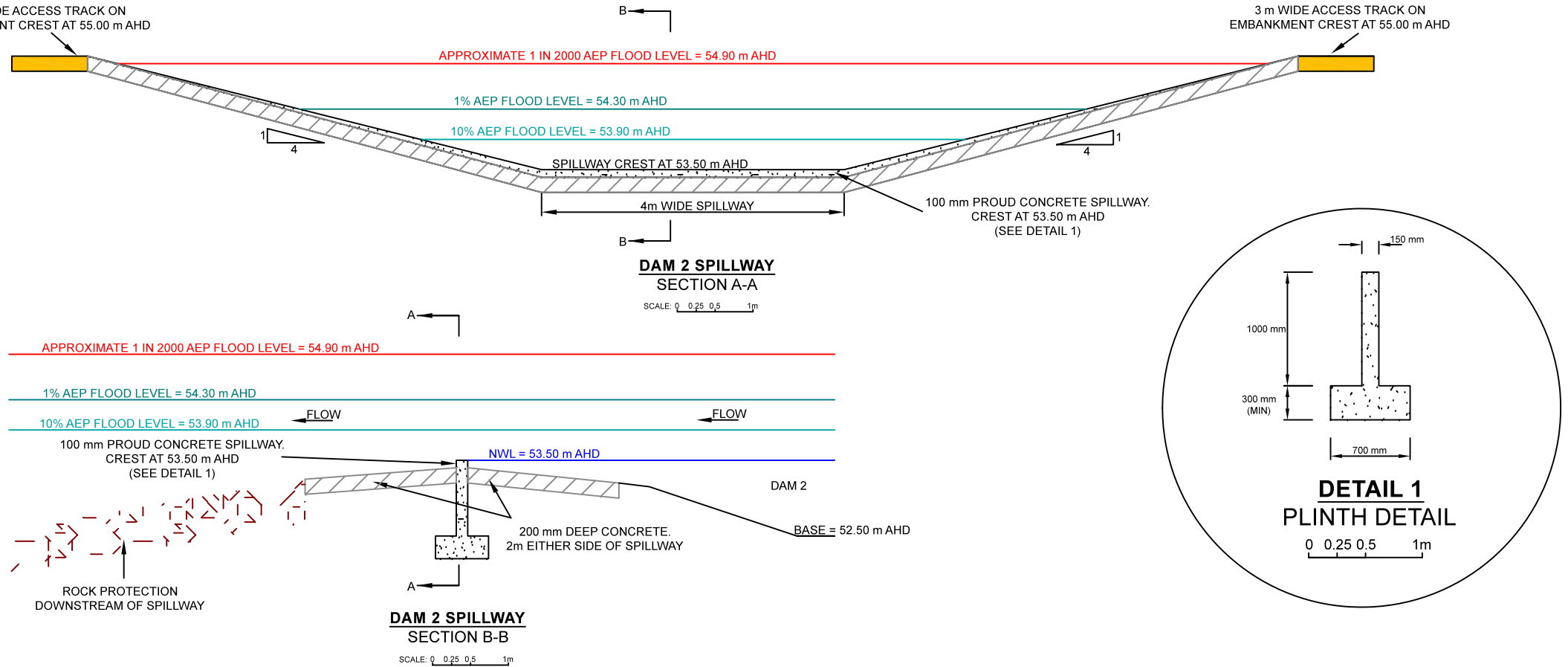
MACARTHUR PARK CEMETERY
WSUD STRATEGY AND
STORM WATER MANAGEMENT PLAN
DAM 6 DETAIL PLAN

SCALE: AS SHOWN
SHEET 5 OF 10
DRAWING No. 1808/SWS/5



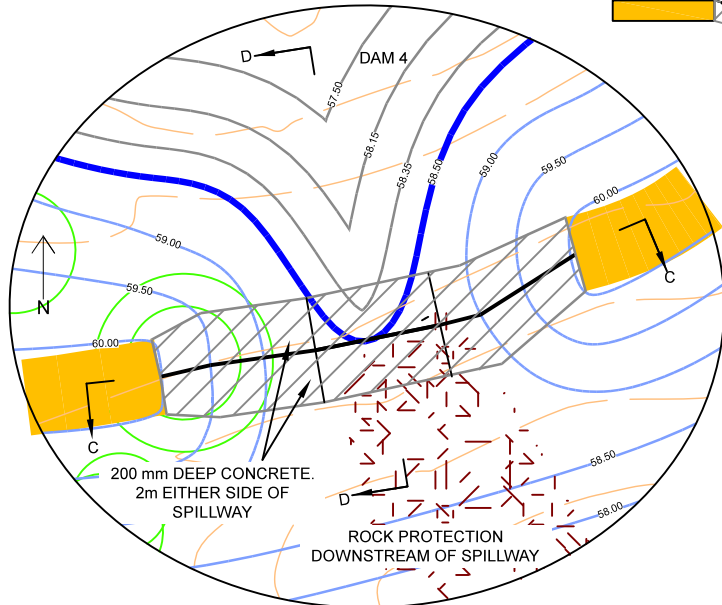
DAM 2 SPILLWAY LOCALITY

SCALE: 0 1 2 4m



DETAIL 1 PLINTH DETAIL

0 0.25 0.5 1m



DAM 4 SPILLWAY LOCALITY

SCALE: 0 1 2 4m

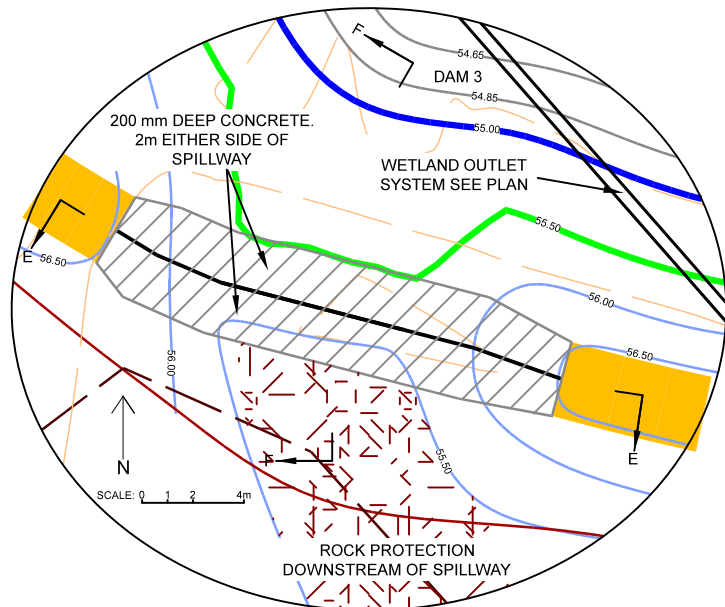


DESIGNED	Michael Mag	PLAN REF.	#
CHECKED	Valerie Mag		
AUTHORISED BY			

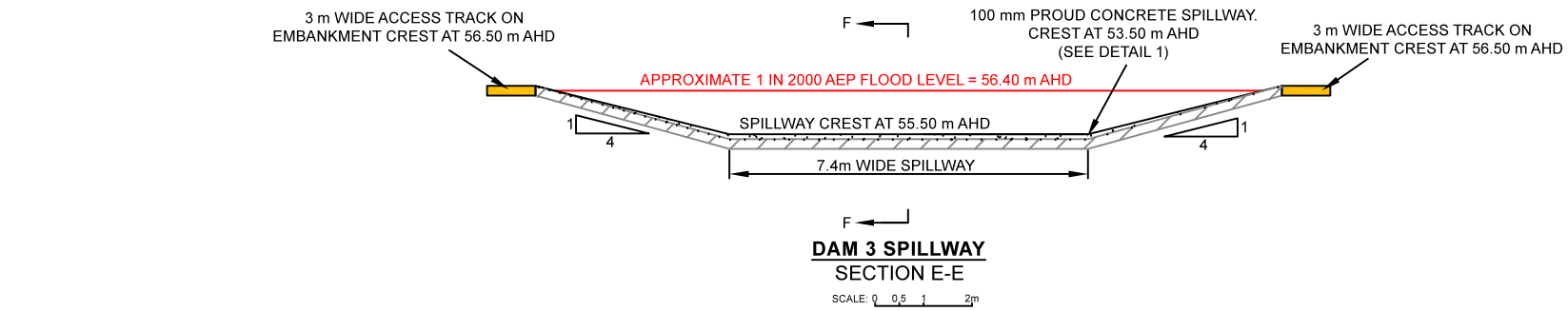
Website: www.stormywater.com.au
Email: stormywater@optusnet.com.au
Phone: (03) 8555 9669
ABN: 95 656 703 998

MACARTHUR PARK CEMETERY
WSUD STRATEGY AND
STORM WATER MANAGMENT PLAN
DAM 2 AND 4 OUTLET STRUCTURE DETAILS

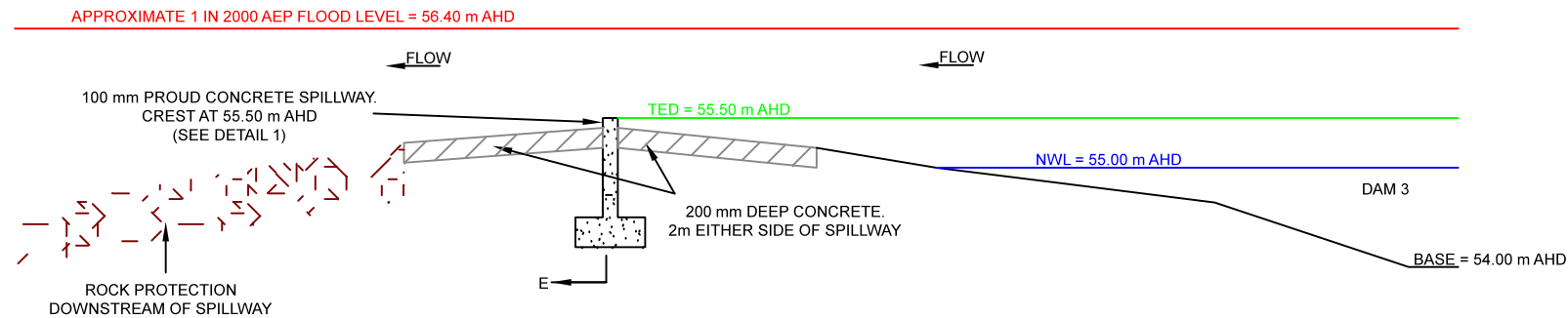
SCALE: AS SHOWN
SHEET 6 OF 10
DRAWING No. 1808/SWS/6



**DAM 3 SPILLWAY
LOCALITY**



**DAM 3 SPILLWAY
SECTION E-E**



**DAM 3 SPILLWAY
SECTION F-F**

**DAM 3 WETLAND TWIN CHAMBER OUTFALL PIT
PLAN VIEW**

SCALE: 0 0.25 0.5 1m

**DAM 3 WETLAND TWIN CHAMBER OUTFALL PIT
SECTION G-G**

SCALE: 0 0.25 0.5 1m

**DAM 3 WETLAND TWIN CHAMBER OUTFALL PIT
SECTION H-H**

SCALE: 0 0.25 0.5 1m

NOTE:
OUTLET PIPE SYSTEM TO BE:
- RUBBER RING JOINTED
- INCORPORATE NO LIFTING HOLES
- INCORPORATE CUT OFF WALLS AS SEEPAGE COLLARS AS REQUIRED.

DRAFT FOR COMMENT	16 OCTOBER 2018
REVISION A	7 NOVEMBER 2018
REVISION	DATE

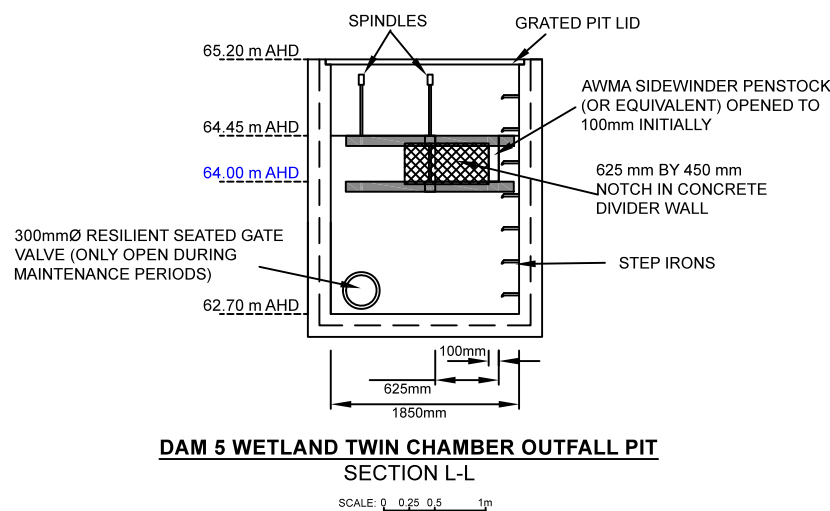
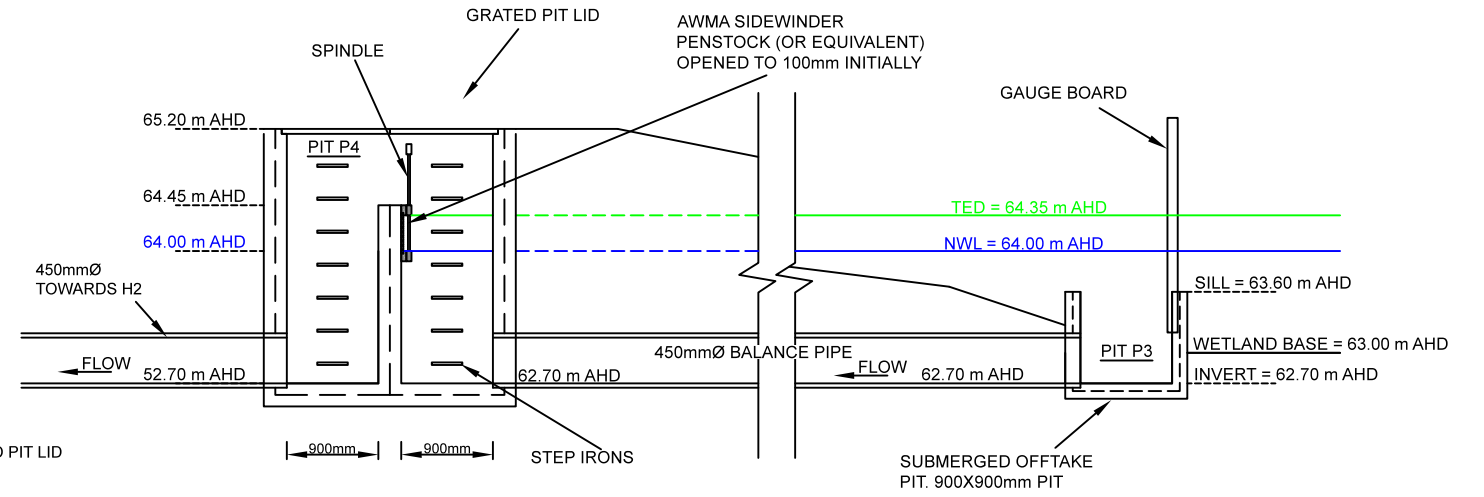
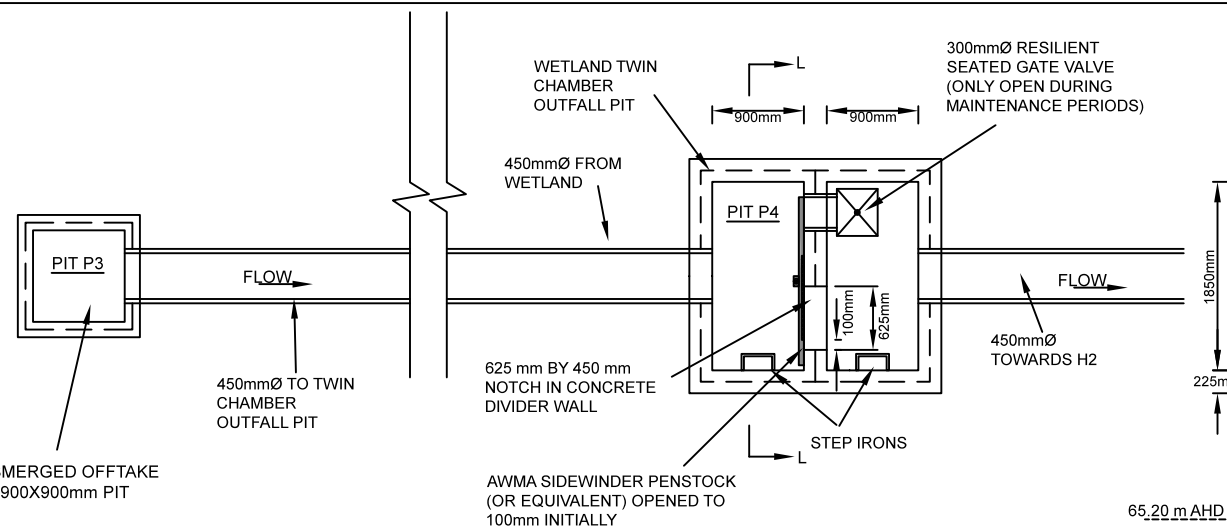
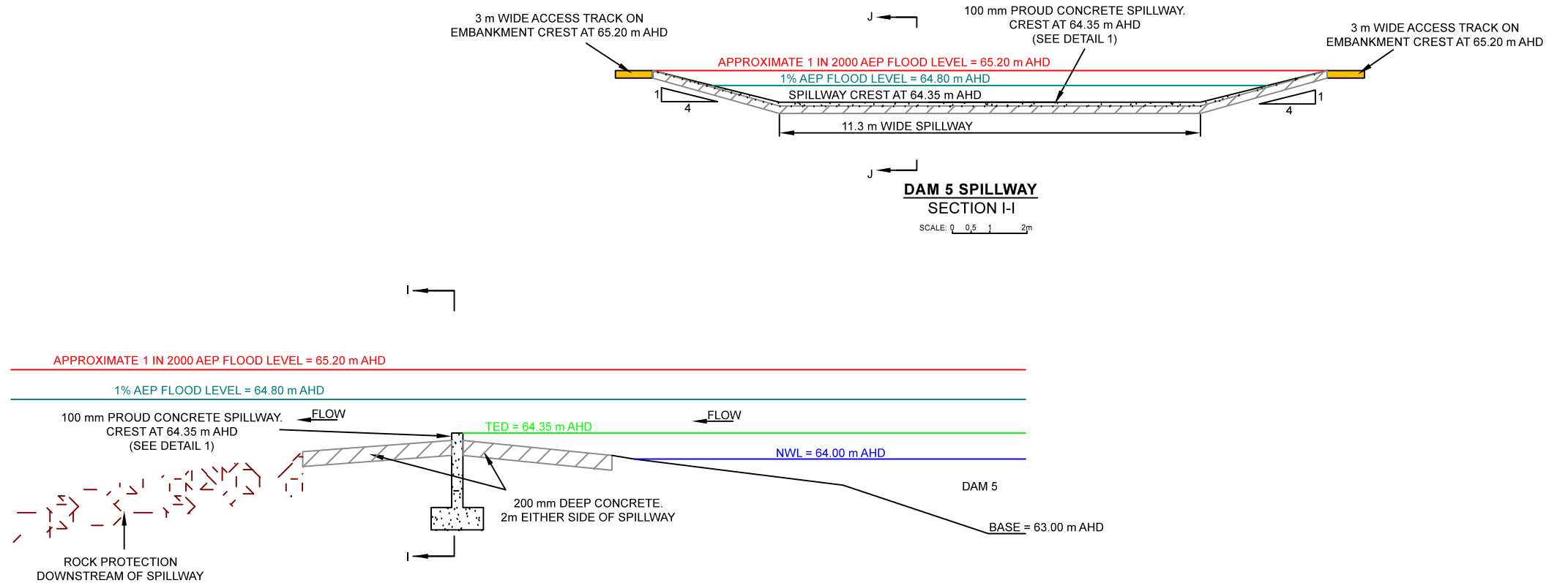
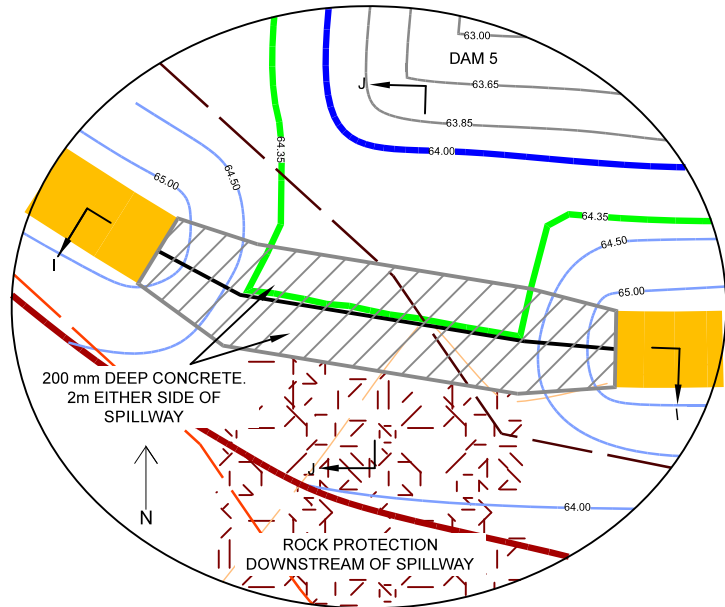


DESIGNED	Michael Mag	PLAN REF.	#
CHECKED	Valerie Mag		
AUTHORISED BY			

Website: www.stormywater.com.au
Email: stormywater@optusnet.com.au
Phone: (03) 8555 9669
ABN: 95 656 703 998

MACARTHUR PARK CEMETERY
WSUD STRATEGY AND
STORM WATER MANAGMENT PLAN
DAM 3 OUTLET STRUCTURE DETAILS

SCALE: AS SHOWN
SHEET 7 OF 10
DRAWING No.
1808/SWS/7



NOTE:
OUTLET PIPE SYSTEM TO BE:
- RUBBER RING JOINTED
- INCORPORATE NO LIFTING HOLES
- INCORPORATE CUT OFF WALLS AS SEEPAGE COLLARS AS REQUIRED.

DRAFT FOR COMMENT	16 OCTOBER 2018
REVISION A	7 NOVEMBER 2018
REVISION	DATE

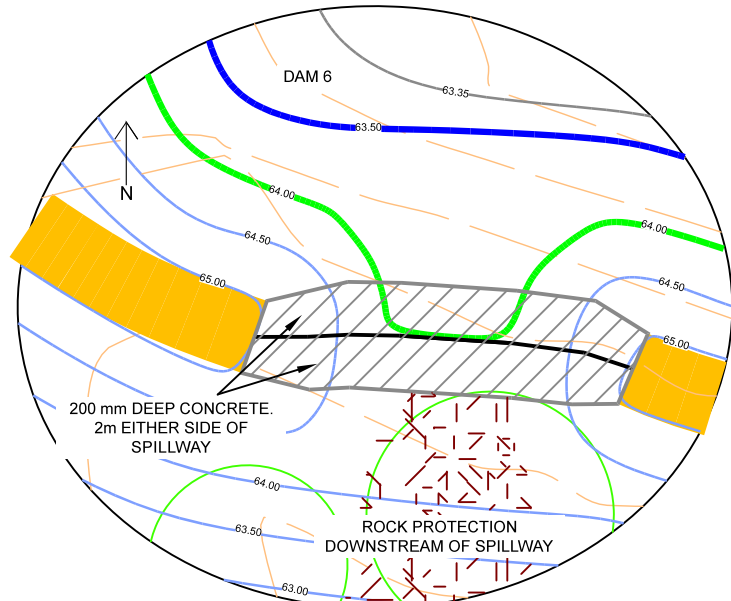


DESIGNED	Michael Mag	PLAN REF.	#
CHECKED	Valerie Mag		
AUTHORISED BY			

Website: www.stormywater.com.au
Email: stormywater@optusnet.com.au
Phone: (03) 8555 9669
ABN: 95 656 703 998

MACARTHUR PARK CEMETERY
WSUD STRATEGY AND
STORM WATER MANAGMENT PLAN
DAM 5 OUTLET STRUCTURE DETAILS

SCALE: AS SHOWN
SHEET 8 OF 10
DRAWING No.
1808/SWS/8



DAM 6 SPILLWAY LOCALITY
SCALE: 0 1 2 4m

3 m WIDE ACCESS TRACK ON EMBANKMENT CREST AT 65.00 m AHD

3 m WIDE ACCESS TRACK ON EMBANKMENT CREST AT 65.00 m AHD

APPROXIMATE 1 IN 2000 AEP FLOOD LEVEL = 64.90 m AHD

SPILLWAY CREST AT 64.00 m AHD

4.4m WIDE SPILLWAY

100 mm PROUD CONCRETE SPILLWAY. CREST AT 64.00 m AHD (SEE DETAIL 1)

DAM 6 SPILLWAY SECTION M-M

SCALE: 0 0.25 0.5 1m

APPROXIMATE 1 IN 2000 AEP FLOOD LEVEL = 64.90 m AHD

100 mm PROUD CONCRETE SPILLWAY. CREST AT 64.00 m AHD (SEE DETAIL 1)

TED = 64.00 m AHD

NWL = 63.50 m AHD

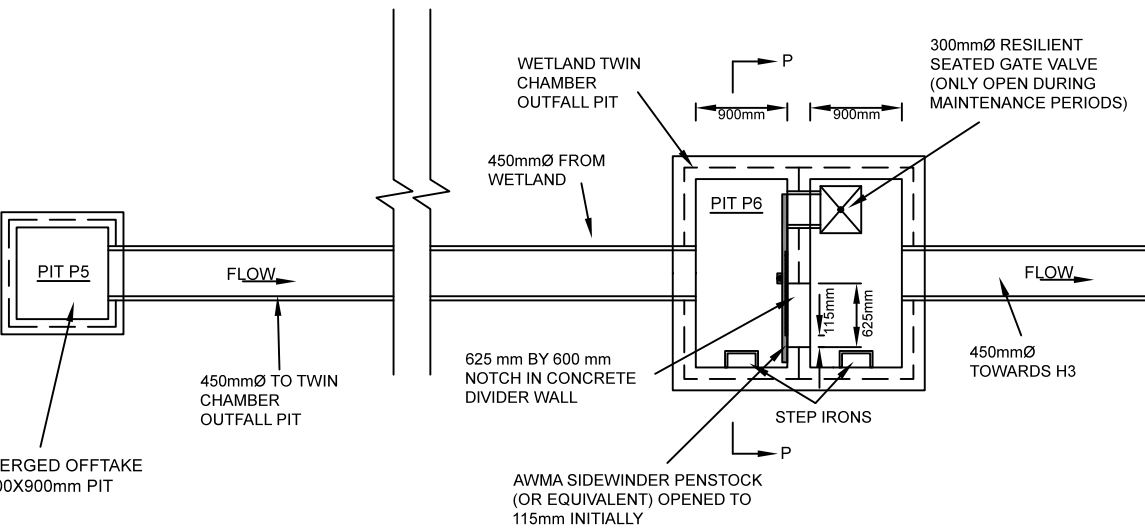
BASE = 62.50 m AHD

200 mm DEEP CONCRETE. 2m EITHER SIDE OF SPILLWAY

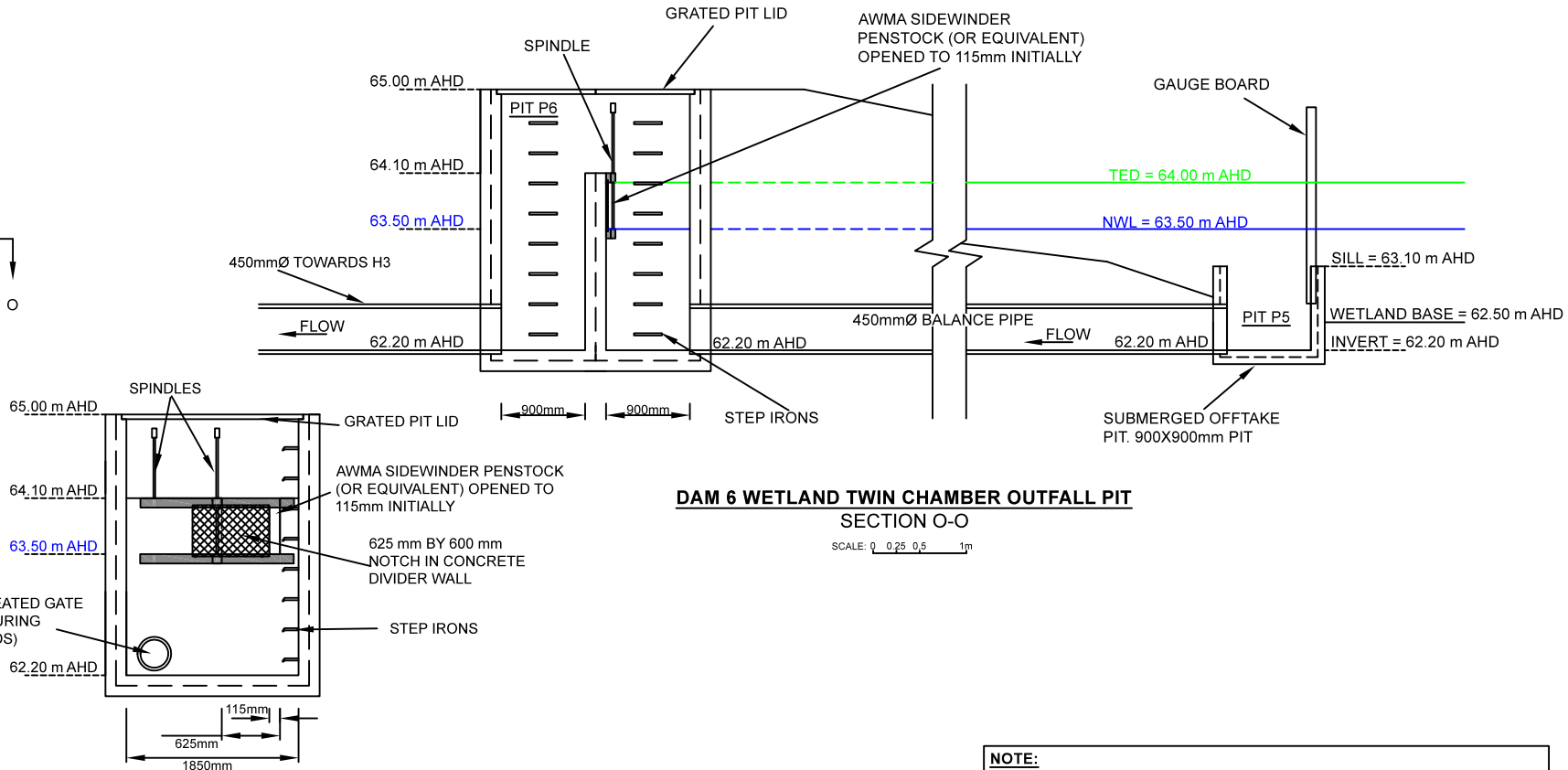
ROCK PROTECTION DOWNSTREAM OF SPILLWAY

DAM 6 SPILLWAY SECTION N-N

SCALE: 0 0.25 0.5 1m



DAM 6 WETLAND TWIN CHAMBER OUTFALL PIT PLAN VIEW
SCALE: 0 0.25 0.5 1m



DAM 6 WETLAND TWIN CHAMBER OUTFALL PIT SECTION O-O
SCALE: 0 0.25 0.5 1m

DAM 6 WETLAND TWIN CHAMBER OUTFALL PIT SECTION P-P

SCALE: 0 0.25 0.5 1m

NOTE:
OUTLET PIPE SYSTEM TO BE:
- RUBBER RING JOINTED
- INCORPORATE NO LIFTING HOLES
- INCORPORATE CUT OFF WALLS AS SEEPAGE COLLARS AS REQUIRED.

DRAFT FOR COMMENT	16 OCTOBER 2018
REVISION A	7 NOVEMBER 2018
REVISION	DATE

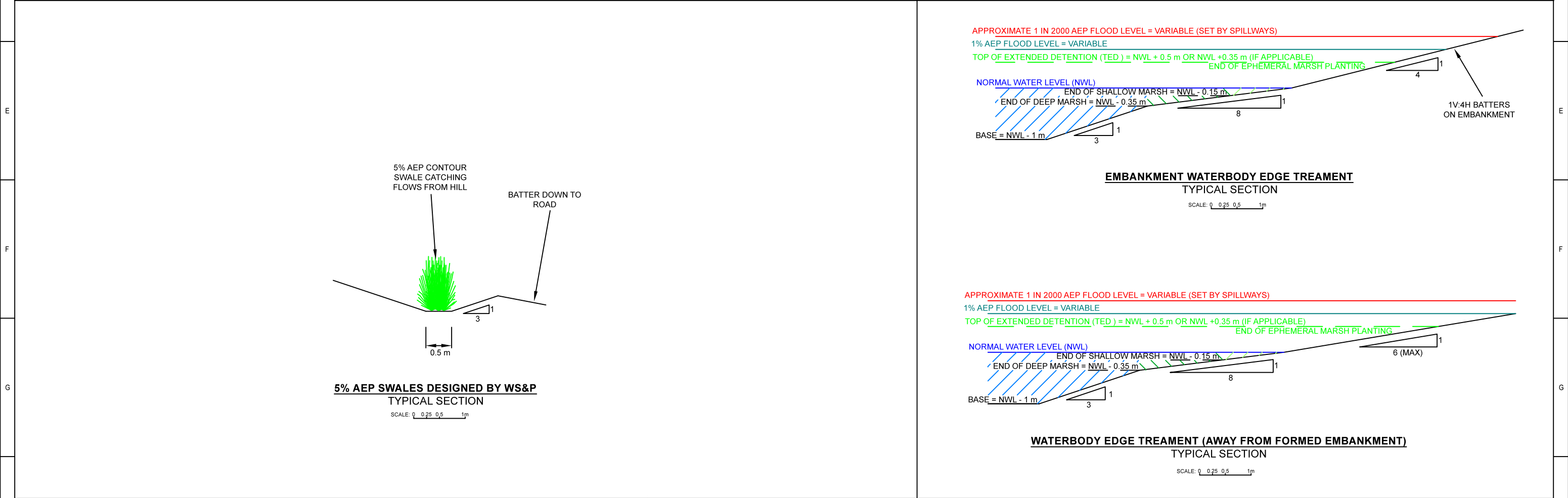
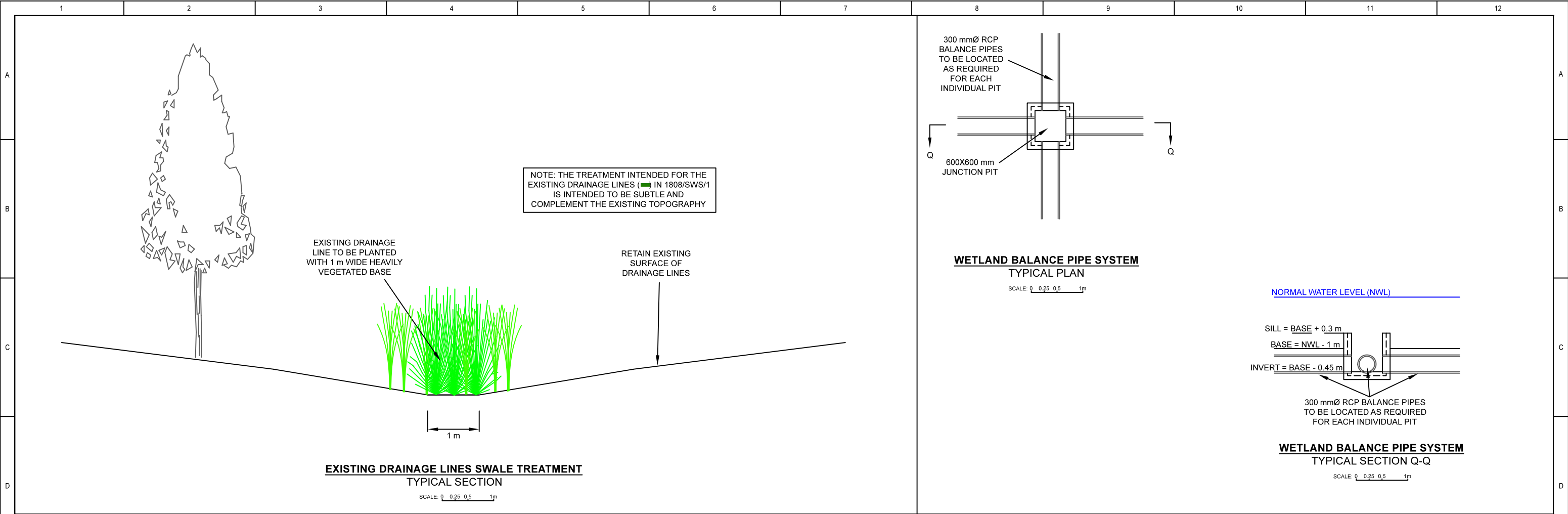


DESIGNED	Michael Mag	PLAN REF.	#
CHECKED	Valerie Mag		
AUTHORISED BY			

Website: www.stormywater.com.au
Email: stormywater@optusnet.com.au
Phone: (03) 8555 9669
ABN: 95 656 703 998

MACARTHUR PARK CEMETERY
WSUD STRATEGY AND
STORM WATER MANAGMENT PLAN
DAM 6 OUTLET STRUCTURE DETAILS

SCALE: AS SHOWN
SHEET 9 OF 10
DRAWING No. 1808/SWS/9



DRAFT FOR COMMENT	16 OCTOBER 2018		DESIGNED	Michael Mag	PLAN REF.	#	Website: www.stormywater.com.au Email: stormywater@optusnet.com.au Phone: (03) 8555 9669 ABN: 95 656 703 998	MACARTHUR PARK CEMETERY WSUD STRATEGY AND STORM WATER MANAGMENT PLAN TYPICAL SECTIONS & DETAILS	SCALE: AS SHOWN SHEET 10 OF 10 DRAWING No. 1808/SWS/10
REVISION A	7 NOVEMBER 2018		CHECKED	Valerie Mag					
			AUTHORISED BY						
REVISION	DATE								