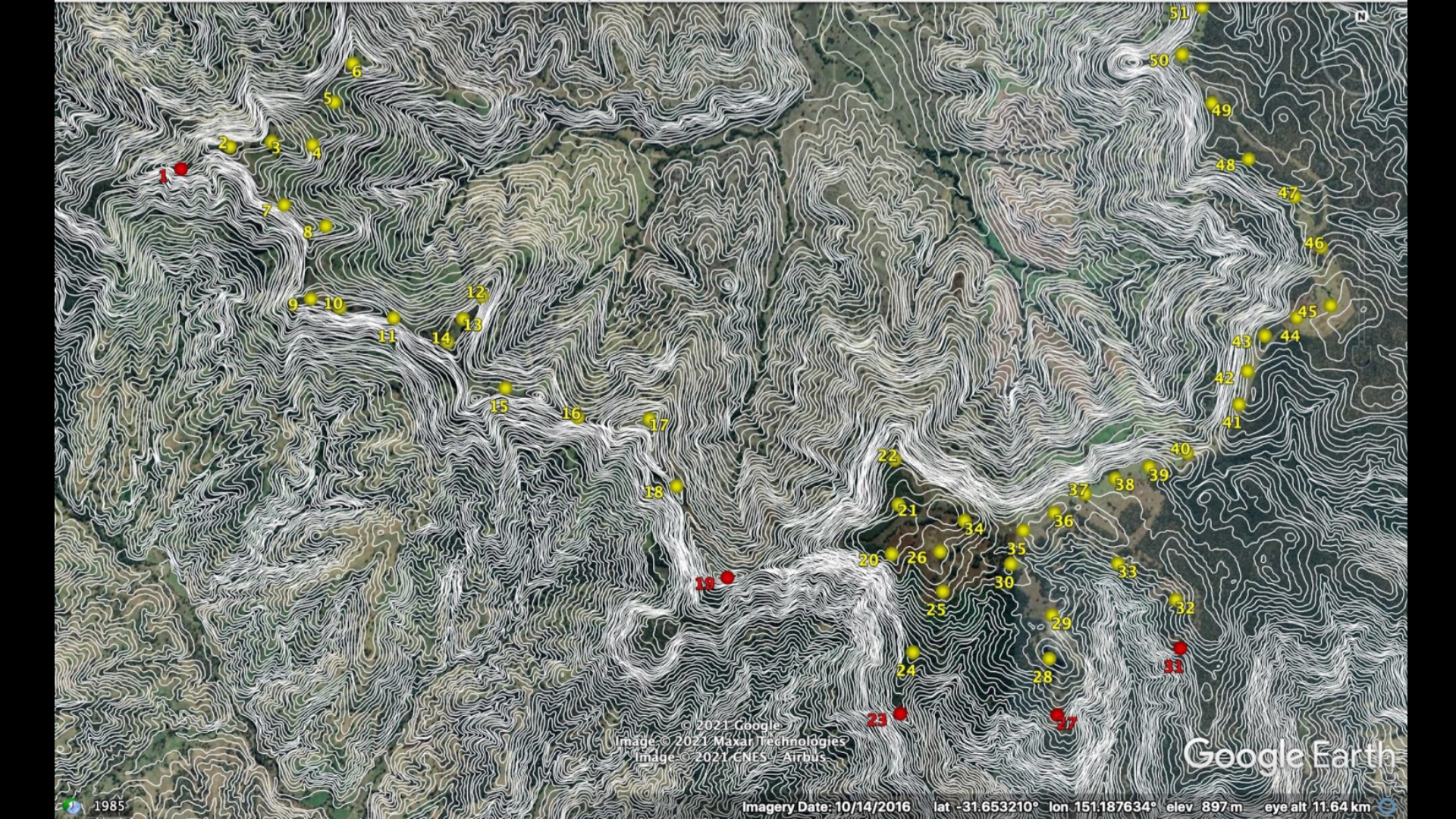


UNSUITABLE LOCATION = UNACCEPTABLE RISK

Timor / Isis River Community Presentation

Independent Planning Commission
Hills of Gold Wind Farm (HOG Wind Farm)
February 2024





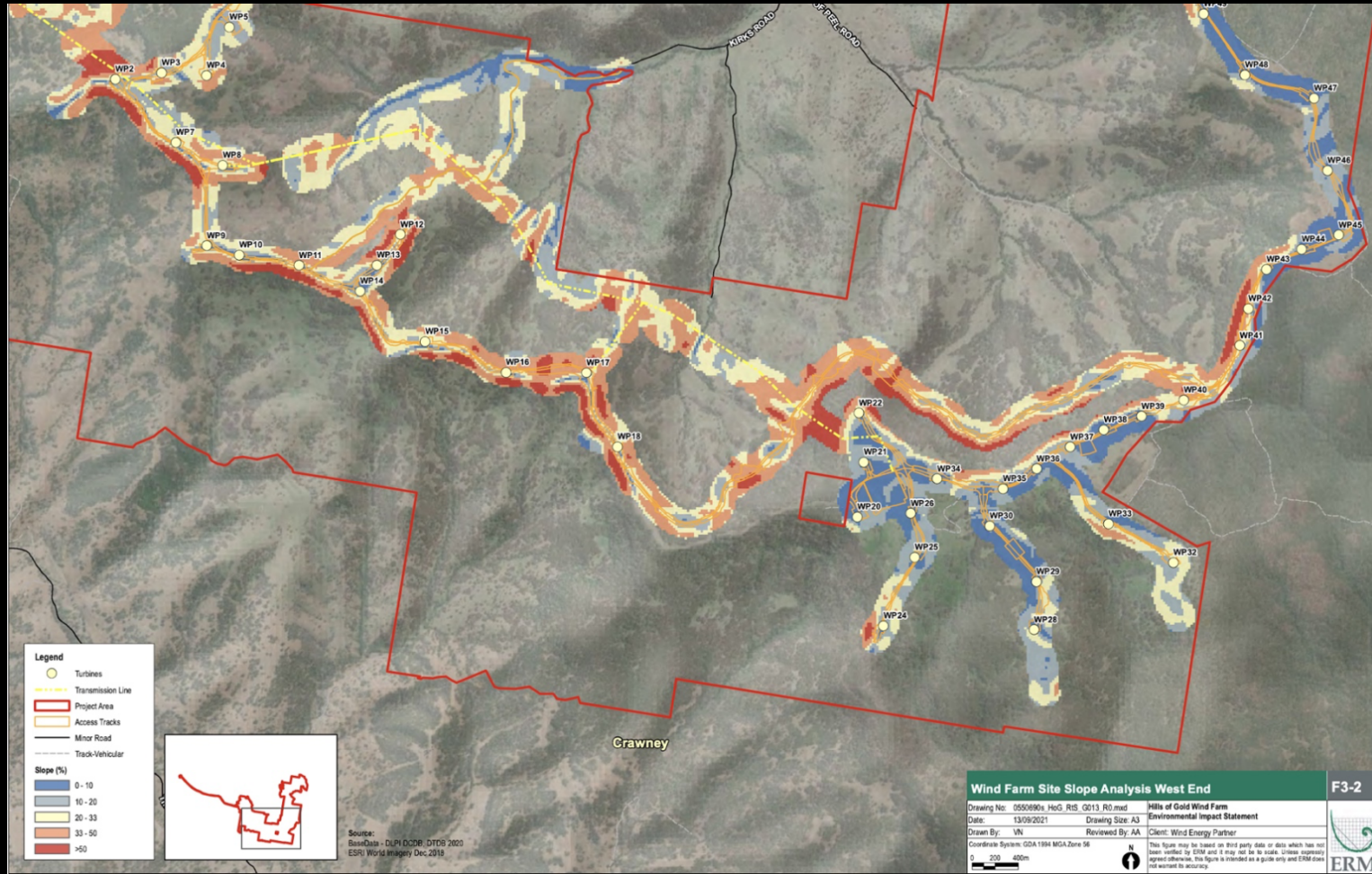
© 2021 Google
Image © 2021 Maxar Technologies
Image © 2021 CNES - Airbus

Google Earth

1985

Imagery Date: 10/14/2016 lat -31.653210° lon 151.187634° elev 897 m eye alt 11.64 km

Steep Slopes (>50%) (Red) in to the Isis Catchment beneath the Wind Farm Project Area Soil and Water Addendum page 10





Water and Soils Assessments use incorrect Rainfall Data and does not account for snow



Crawney Mountain snowfall, June 2021



Hanging Rock snowfall, June 2021



2020 rainfall event demonstrating the volume and velocity of runoff on a property neighbouring the Project Area.



Silt from Perry's Creek entering the Isis River
19th of January 2022

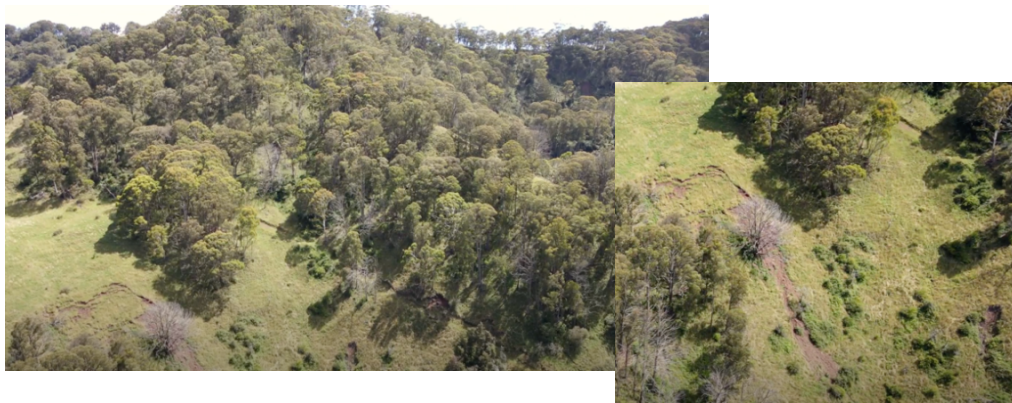
What you will see on these largely undisturbed Soils:



Landslides on the escarpment



Highly Erodible Valleys leading up to
Ridgeline



More Landslides on the escarpment



Silt Perry's Creek entering the Isis River Dec
2021 and Jan 2022 (following disturbance)

**UNSUITABLE LOCATION =
UNACCEPTABLE RISK**

