

State Significant Development – SSD 6612 Martins Creek Quarry.
Notice of Objection to the consent authority for SSD 6612

To Commissioner C Wilson chair of the independent Planning Commission Panel

My name is Melissa Hoban, I am a resident of Paterson and a member of the Martin Creek Quarry Action Group and have lived on the outskirts of Paterson for the past 6 years.

I object to the expansion of the Martins Creek Quarry for the below mentioned reasons

these areas are:

- Road Safety
- Effects on local business, community and loss of amenity.
- Air quality
- Environmental concerns.
- SAI concerns

Road Safety : Paterson is a busy vibrant historic rural village, we are not just a village open for business on the weekends.

I spend time in Paterson most days of the week, from picking up the mail, purchasing something from the local IGA or catching up with friends for a coffee.

My biggest concern in this village is the intersection of Duke and King ST, being an historic village the roads are not designed to handle big numbers of large haulage trucks, I often pick my youngest son up at the Paterson school bus stop at Duke Street.

It concerns me greatly that our local school children will have to navigate this already busy street with the added possibility of 280 trucks per day, just to get to and from school.

This intersection is always busy, and simply slowing down the speed of the trucks and slightly reducing numbers will not mitigate the potential impacts of this intersection, for those who use it.

And its not only the school kids in Paterson accessing the buses that concern me, its the kids waiting on the side of a rural road, usually in the long grass or unmarked drive ways in an 80 or 100km/h speed zone, waiting to jump on or off the local school bus, that really worries me, especially the kids on the proposed haulage route. I really feel that this issue has not adequately addressed , which I believe is completely unacceptable.

* There are 6 services that take school children to school in the local areas. - Dungog High, Paterson Public, Hunter Valley Grammar, St peters college, Linuwel School, and that's only in the Paterson area.



This is Dungog Road, before Gostwyck Bridge, on the right, student waiting to get on bus, bus cannot pull completely off road to pick student up, hazard lights are on.



Dungog Rd, heading towards Gostwyck Bridge, student has just boarded bus, truck over takes bus on double lines, hazzards lights on.

The cumulative effect of traffic in Bolwarra, will have huge impacts on traffic movements, especially where Martins Creek Quarry trucks will merge with the Brandy Hill quarry trucks -15 trucks/ hour, the Martins creek Quarry trucks 20 trucks /hour) where Tocal Road merges with Paterson Rd this will have a huge impact on already busy roads and intersections. Cumulative effects of traffic will also occur at the intersection at Pitnacree Rd and Melbourne St East Maitland, this is an extremely busy intersection. I believe reports done on Traffic and cumulative effect have not been properly researched nor increase in traffic due to increased residential footprint.

The Dungog Shire Mission is “peaceful rural lifestyle”. This cannot be achieved if this Development application goes ahead as it is.



Effects on our local businesses, our community and amenity.

Paterson is the main shopping precinct for the surrounding villages, I'm going to name these businesses to give you an idea of the services our village provides for locals and tourists alike.

- Ladies hair dresser
- Florist
- Paterson petrol station cafe/ mechanical services (Employs local youth)
- Paterson Take away and newsagent(Employs local youth)
- Paterson Chemist
- Paterson Medical center
- Paterson Lodge - luxury B&B, function center and cafe (Employs Local youth)
- Paterson Court house - Hotel and bottle shop (Employs local youth)
- Patersons mens barber
- A local Medical Herblist
- Paterson Post office.
- A Country clothing store
- A dance studio-/plus community hall for weddings and celebrations
- A local IGA (Employs local youth)
- A Butchers (Employs local youth)

- Stockers – they sell rural machinery and farm supplies (Employs local youth)
- Numerous B & Bs
- A local boxing gym
- a sporting complex, providing netball, cricket, soccer and football fields
- local golf course
- there is also a local primary school and pre school
- 2 museums
- Paterson RFS
- And beautiful Tucker park

This little village is thriving, and this will only increase, unless the village is exposed to large volumes of heavy haulage trucks due to the quarry expansion, all these businesses will be adversely effected

The Hunter Regional Plan for 2036 sets out a vision for the Hunter,

- One of these aims, is to foster development of thriving communities.

Surely in 2022 we are clever enough to ensure the Hunter gets the construction material it requires with out disadvantaging smaller players.

What makes our community successful is that it is small but that doesn't make it any less valuable.

Allowing this development to go ahead without adequately mitigating the risks to our communities will effect how we go about our lives on a daily basis, where we spend our time, and where we spend our money.

- I feel that the long term effects of this development will weigh heavily on this community.
- Economically, as people will feel less at ease going into a place where they will have to negotiate numerous large truck.
- I believe it will also weigh heavily emotionally as the fabric, of our way of life will be altered dramatically, this will without a doubt have negative effects on the mental health of locals, young, old and in between.
- Its the loss of amenity all residents and visitors will struggle to comprehend.
- State Significant projects should aim to minimise impacts on amenity.

How on earth can adding 280 truck movements a day to a small rural village, with narrow streets, designed in a different time, handle this load.

And, no amount of community contribution or sponsorship will mitigate these potential losses.

Life style in the Village of Paterson is laid back school kids jump enthusiastically off buses at Paterson each school afternoon heading to after school activities, sport, dance, or after school work commitments, sometimes just going to the take away to grab hot chips, to hangout with friends at the river for an afternoon swim, just meters from the main street, these idyllic activities would be put at risk if Paterson becomes part of the Martins Creek haulage route. My boys used to jump on push bikes and ride to Paterson during school holidays for the fun of it, this would no longer be possible or safe if the road becomes part of the haulage route.

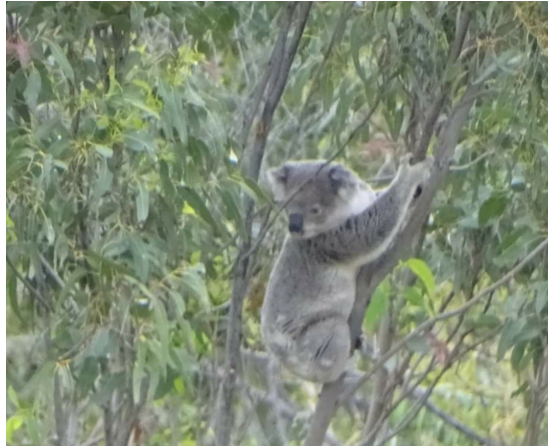
This project will take away lifestyle, freedoms and joys of our community, it will change and restrict it for many years, just so other communities in NSW enjoy life style, freedoms and will benefit from new development, this makes no sense, and is not right, or fair

Environmental Concerns

The Hunter Regional plan for 2036 sets out a vision for the Hunter, one of these aims is to

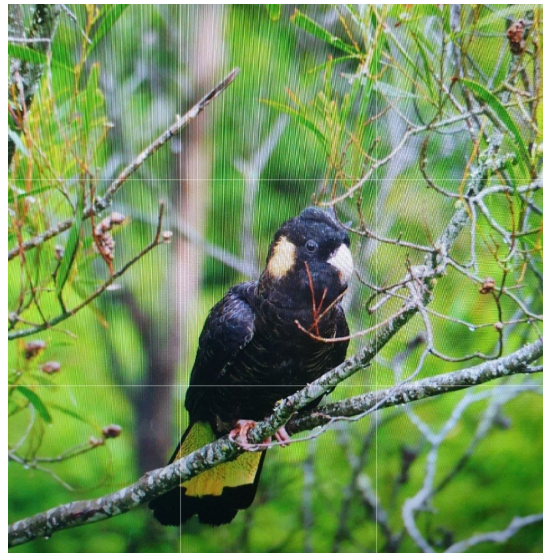
- Provide for bio diverse rich environments.
- This project area contains matters of national environmental significance, including the koala, Slaty Red gum, Regent Honey, Swift parrot and the Eastern spotted Quoll.
- which are all historically known for being in the Martins Creek area. there has been 2 sightings of koala on the project site, and I personally have been made aware of at least 12 separate sightings of Koala on properties that bound the Quarry in the past 12 months. This land is also likely to contain 21.61 hectares of core koala habitat
The Koala is listed as endangered in NSW, and it is clear, that the way to save these species is to preserve their habitat, its just that simple.
- There has also been 2 sightings of Eastern spotted quoll on or out side properties that bound the quarry unfortunately no photos, as yet.
- Surely this is reason enough to look more closely at this site,
- Martins creek Quarry is considered geologically rich, but it is also rich in bio diversity.

And.... the natural environment is an important part of our future as well.



Pictures taken by residents that share boundaries with the quarry or live in close proximity.

These pictures are from residents who's properties have boundaries with the quarry.



Air quality : There are many safety concerns around dust, silica, fly ash and diesel fumes that are unfortunately part of quarry truck movements, and will have negative effects on the health and well being of local residents, on going blasting and vibration, can clearly be heard and felt, at our property in wood glen close.

There will be a huge impact on effected residents mental well being, physical health and lifestyle. This has already been proven by the communities lived experience.



First Picture From Vouglès Rd Taken by resident June 8th 2021, 2nd picture taken from Lennoxton Rd Vacy 2018 taken by Resident.

2021 SIA Concerns

I attended the SIA in 2021 and I feel very conflicted by the SIA Merit review.
My Concerns from 2021:

- Communication was poor, meeting wasn't widely advertised through the effected community.
- Meeting was rushed, we were assured that there would be time at the end to address concerns, time wasn't provided to air concerns.
- A number of people complained that it was very hard to hear the meeting, and that a microphone would be helpful, Umwelt and Daracon agreed, and would supply one for the next meeting held the next day, Umwelt and Daracon never supplied a microphone for the second meeting either.
- The writing relating to the meeting was on a screen, writing was small and difficult to read.
- Any points taken down on white board once again were written in red white board marker, once again hard to read.
- Request for copy of notes made in the meeting, this was also denied, notes from the meeting were made available as part of the ADA and I feel these

notes didn't reflect the issues or concerns raised by the community in the SIA meeting.

- Concerns were expressed about the mitigation of risk and associated classification, and did not reflect the opinions and concerns of attending residents.
- I do not believe the SIA convened and collated by umwelt/Daracon was done in a fair, respectful or ethical manner, in regards to the community it would
- effect.

Conclusion

I object to the assessment report findings and ask the IPC to make their decision considering all the facts and the impacts on the communities, the businesses and the residents, who will significantly be effected by this proposal for a minimum 25 years by this development. Based on lived experiences the proposal will result in absolutely unacceptable impacts on our rural village and amenity.

The quarry has hung around the neck of residents for the last 18 years, mental health impacts were laid bare during the IPC public meeting and spilled over when simple questions couldn't be answered and concerns of residents were dismissed with comments relating to mitigation of risk and perceived residual risk, these residents bravely made themselves vulnerable by speaking honestly in their speeches, and the lack understanding of the issues caused anguish and anxiety to residents who were at the IPC meeting

I respectfully ask the you reject the expansion of the Martins Creek Quarry expansion.

I do hope you will consider my comments on the Martin Creek Quarry expansion, and look closer for a solution that will bring some sense and hope to this situation.

Melissa Hoban