

Regional Context Map

# Development Background

- The Applicant operates an existing flight training centre within Sydney Airport
- The flight training centre is critical to the Applicant's operations for pilots and cabin crew to meet the legislated level of continual training
- The existing facility will be impacted by the Sydney Gateway project
- The development was declared SSD following advice from the IPC that the development was of State and regional significance due to its critical function and the construction timing of the Gateway Project

# Project Description



- Flight training centre
  - Flight training wing and emergency procedures hall
  - 12 flight simulators for each aircraft type in the Qantas Fleet
  - IT and office rooms, evacuation pool
- Multi-deck car park
  - Constructed over two stages
- 23 month construction period



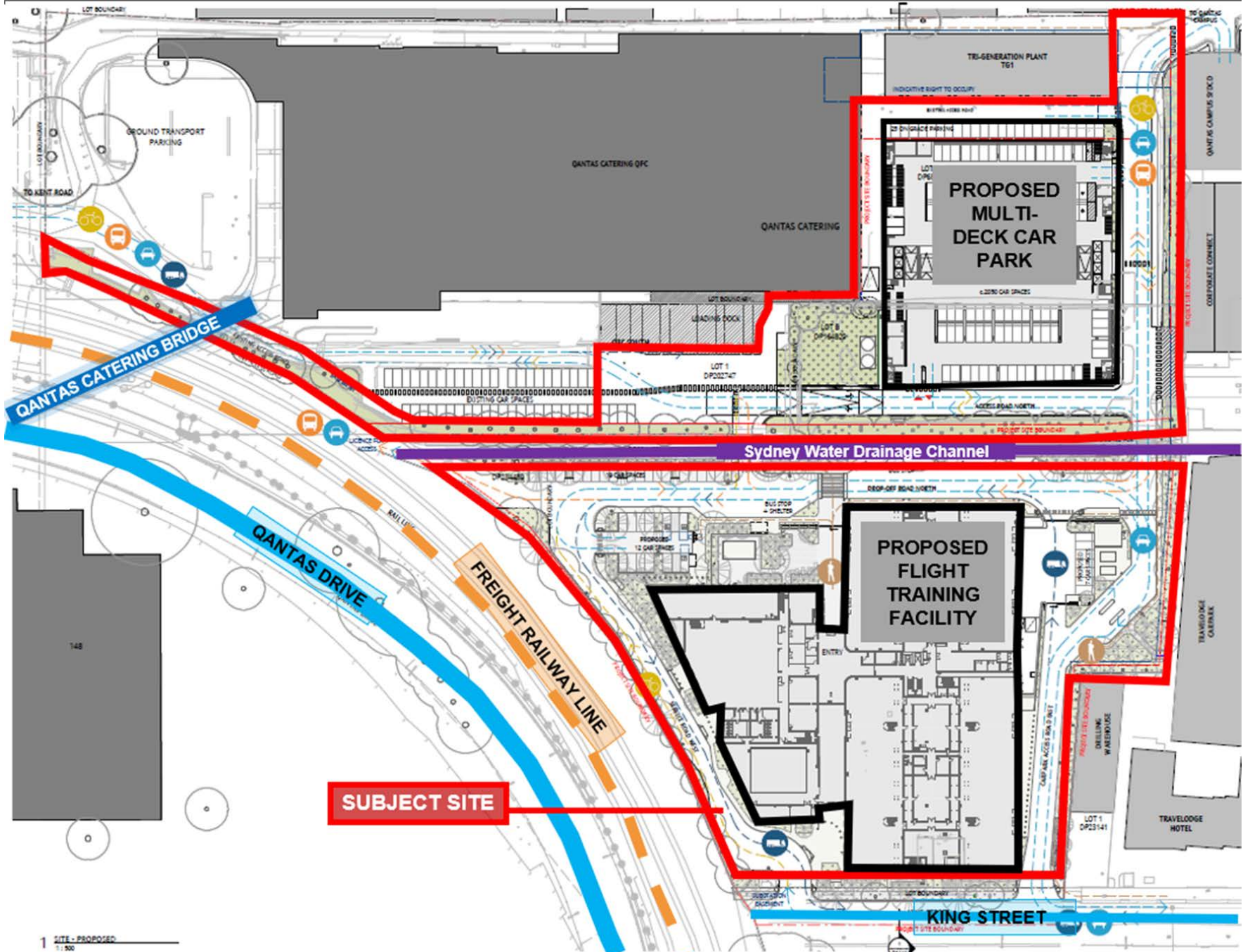
Flight simulator



Emergency Procedures  
Hall

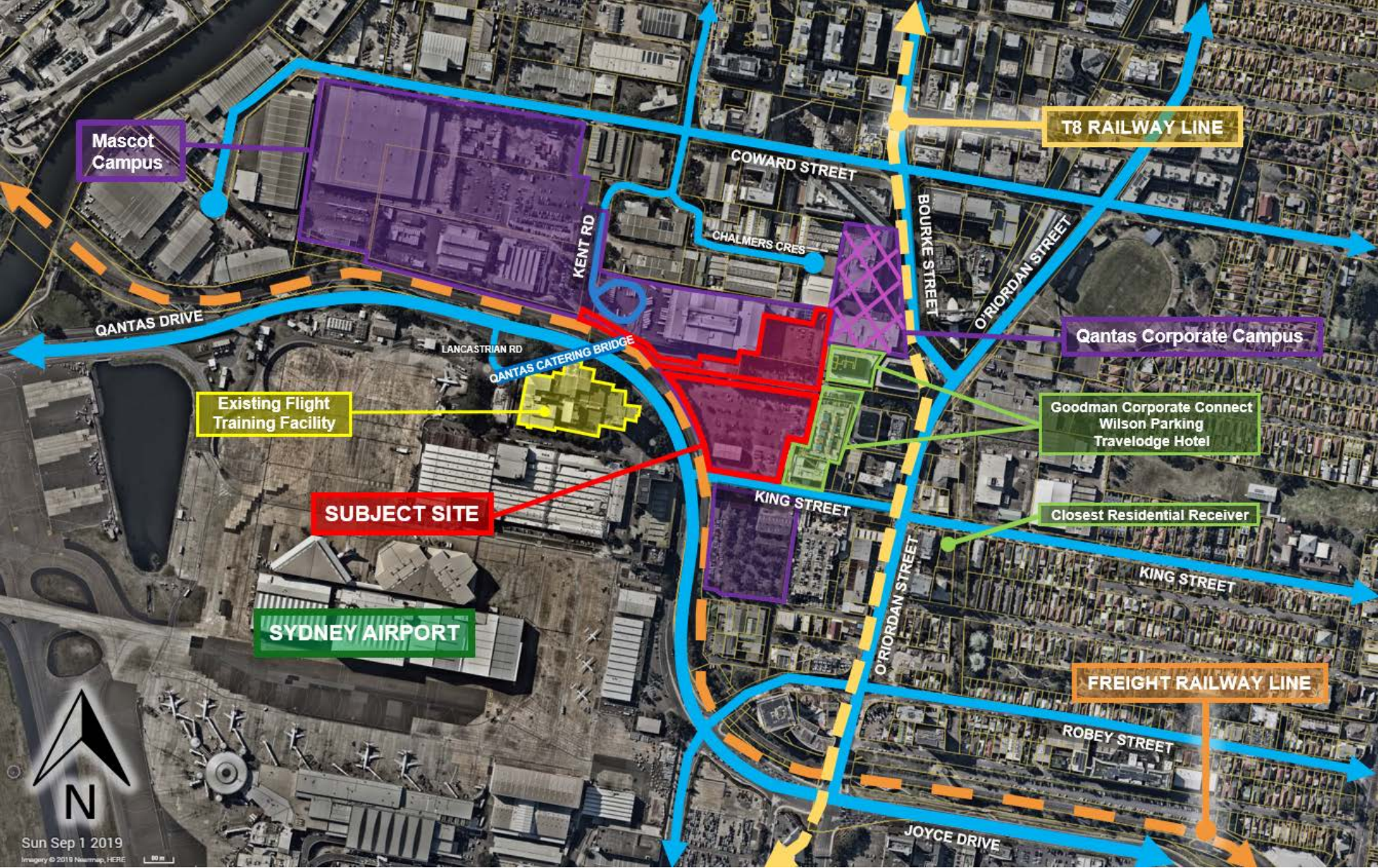


Flight simulator



1 SITE - PROPOSED  
1:500

Site Layout



Sun Sep 1 2019  
Imagery © 2019 Navmap, HERE

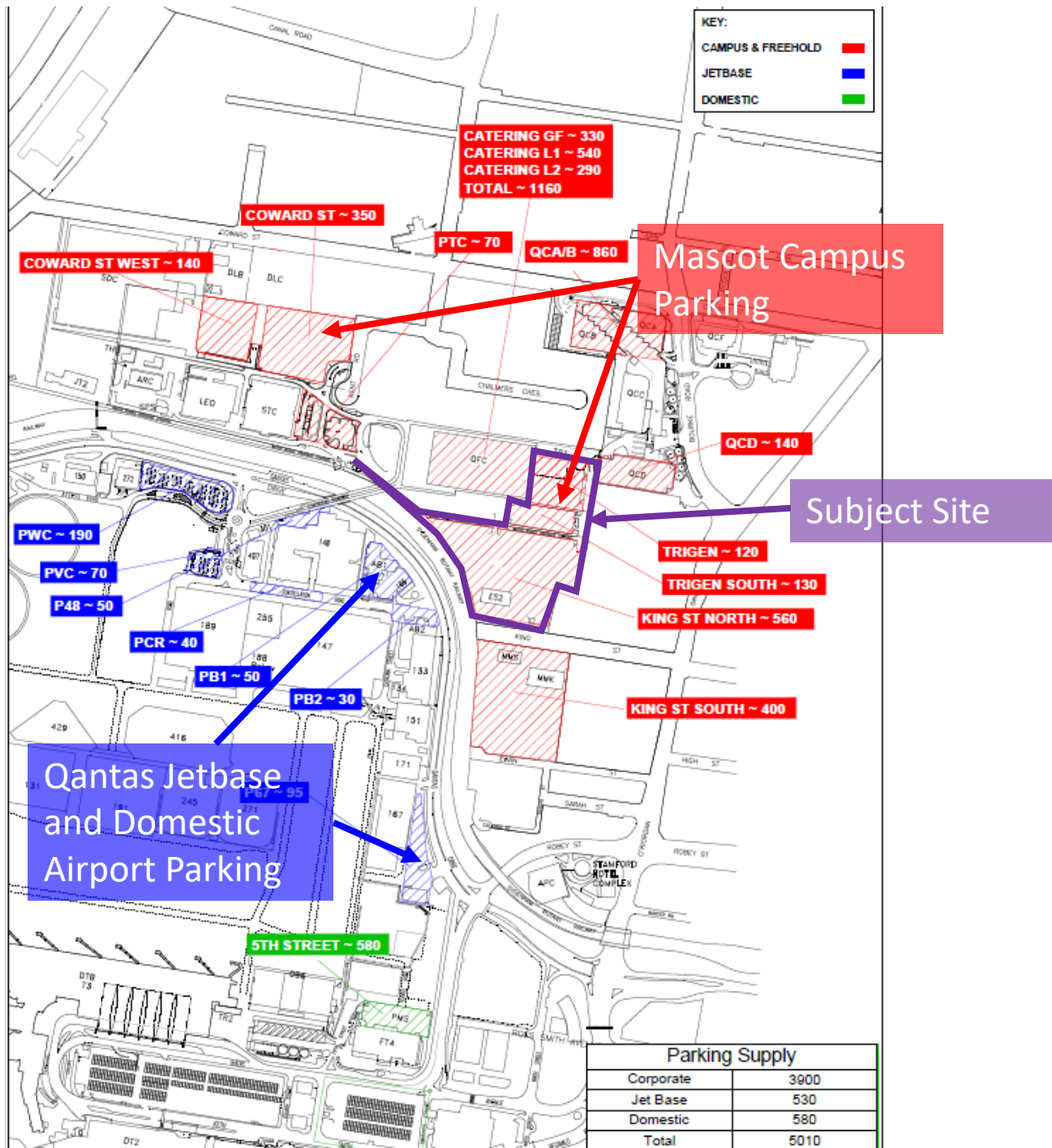
Developments in the Site Vicinity

# Exhibition

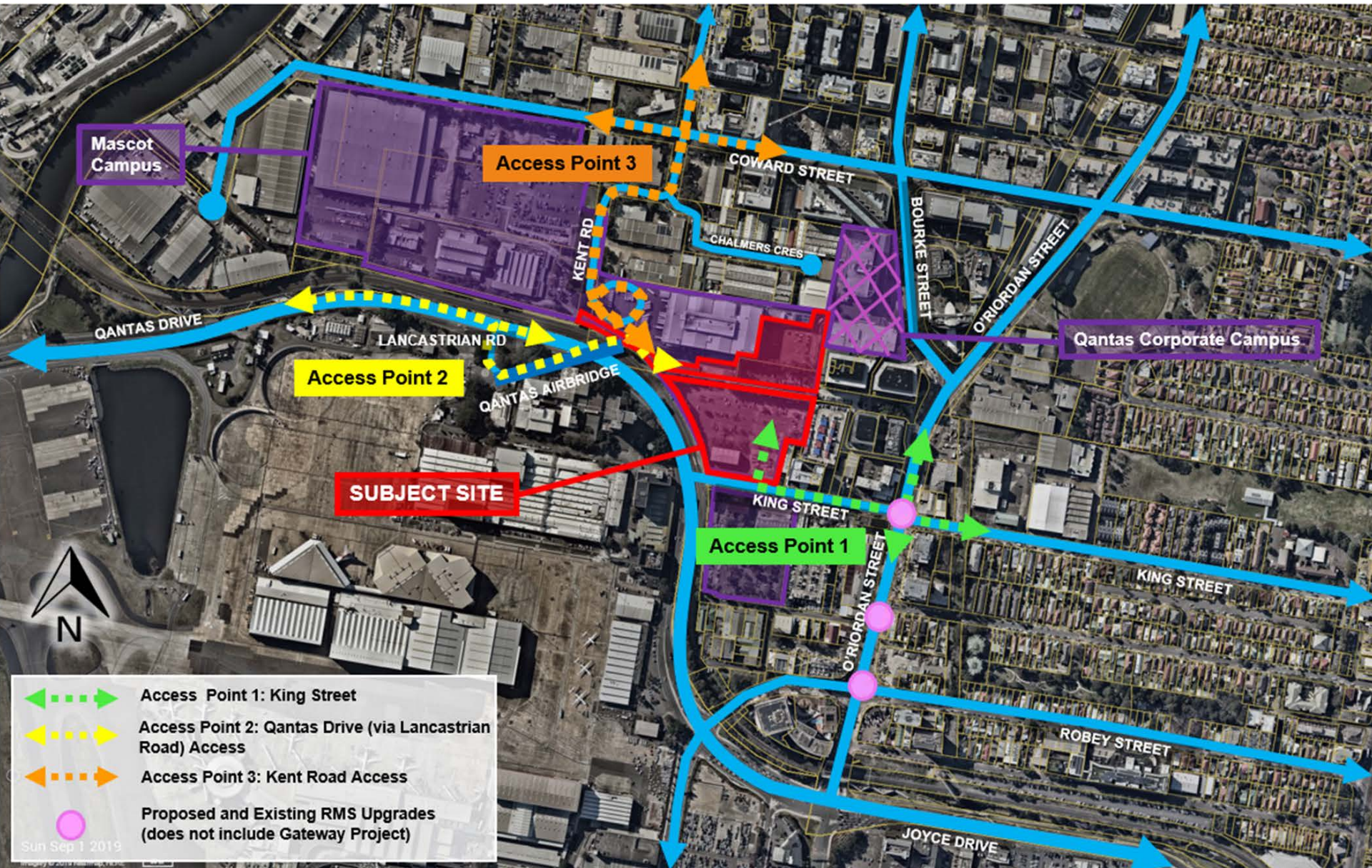
- DA exhibited between 4 June 2019 to 4 July 2019
- 16 submissions received, including one objection
- Issues raised in submissions include:
  - Traffic impacts
  - Construction noise impacts
  - Urban design



Existing parking supply across the Mascot Campus and Sydney Airport



# Traffic



Local Road Network and Access Points

**Extend Right Turn  
Bay from 80 m to  
100 m**

EXTEND RIGHT TURN BAY  
FROM 80 METRES TO 100  
METRES, AS SHOWN

**Qantas Drive**

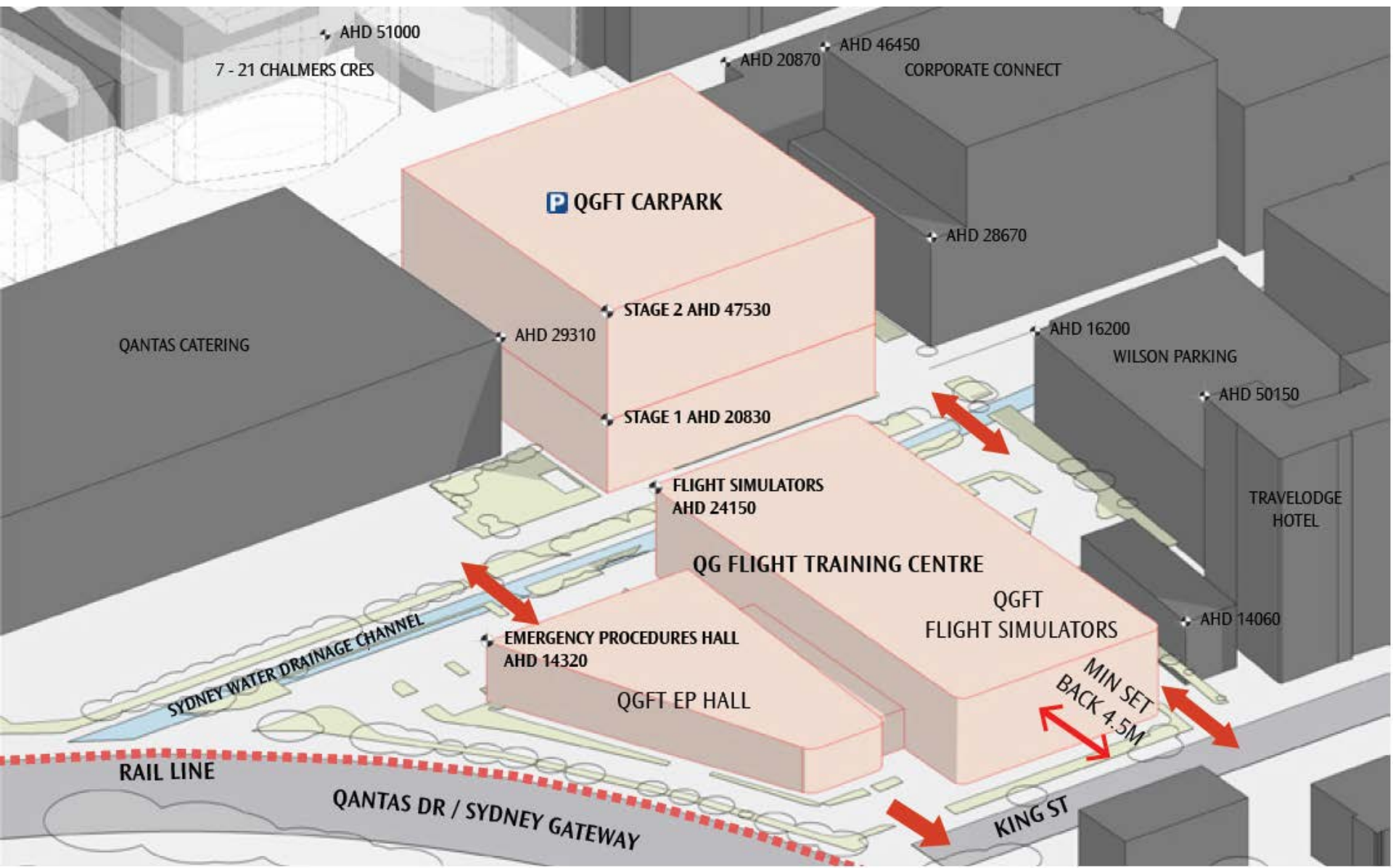
**Sydney  
Airport**

**Lancastrian Road**

**Qantas Airbridge**

Qantas Drive and Lancastrian Road intersection

# Urban Design



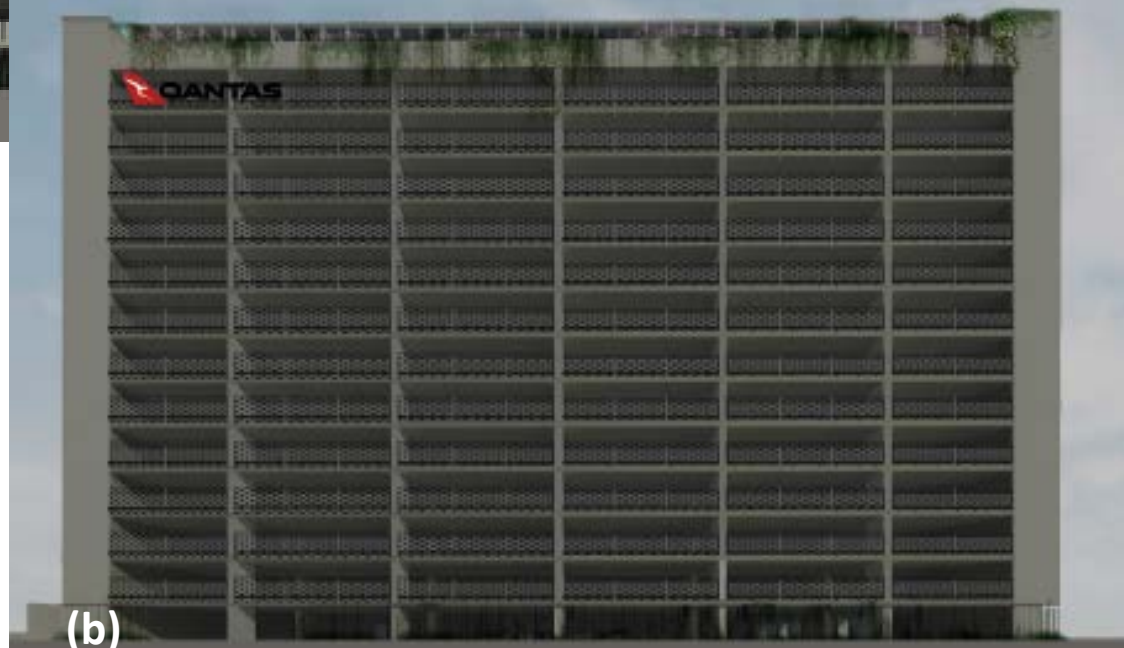
Built Form Context

# Car Park Design Options



(a)

## Car Park Options



(b)

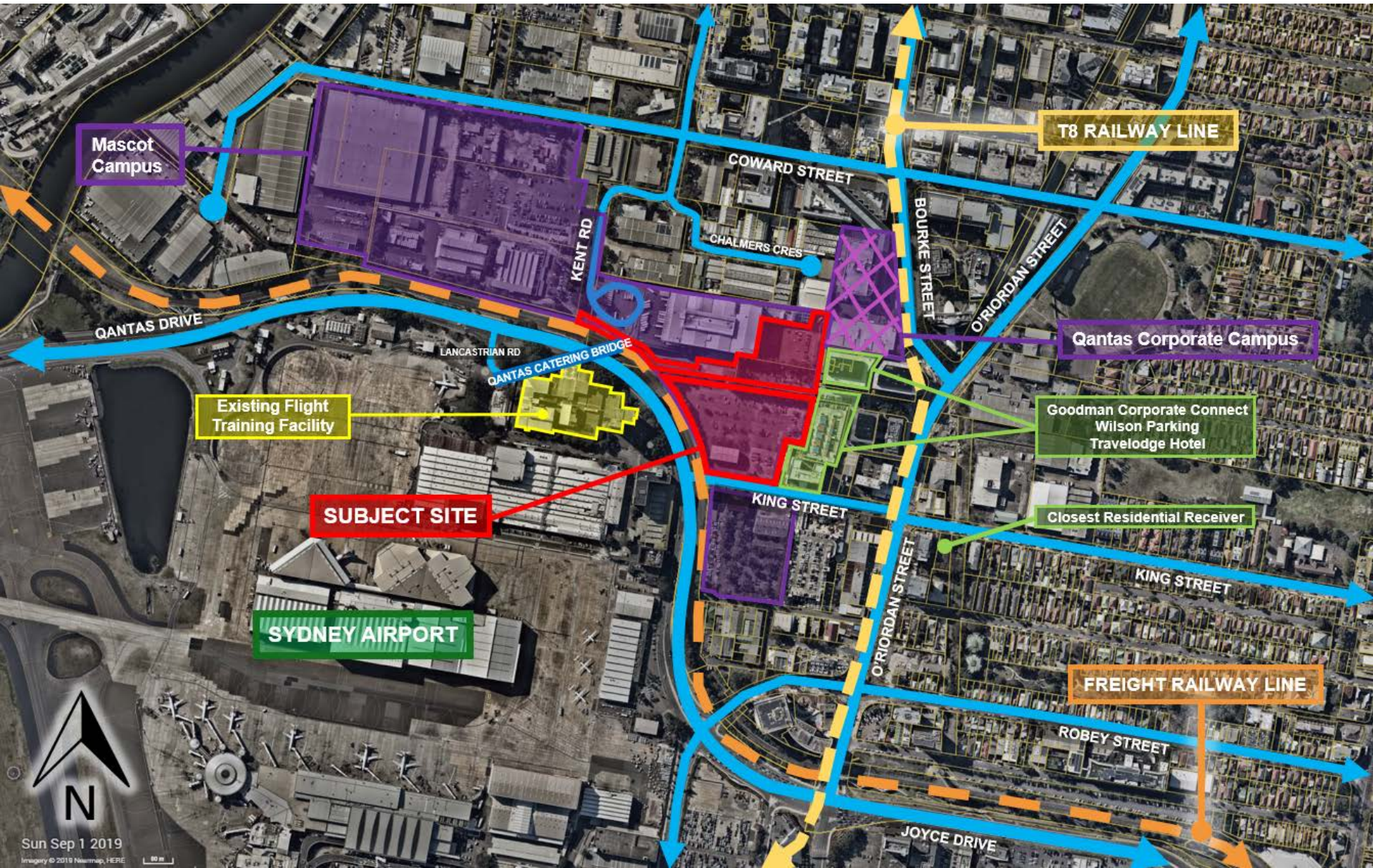


Amended Design - Perspective of Car Park from within the site



Qantas Flight Training Centre

# Noise





# Other Assessment Matters

- Stormwater
  - Discharged to Sydney Water drainage channel towards the centre of the site
- Flooding
  - Peer review undertaken at Council's request
  - Minor impacts to neighbouring property to the north to be designed out during the detailed design stage prior to the issue of a CC.
  - Council and agencies satisfied that flooding impacts can be mitigated.
- Hazards and risk
  - Some dangerous goods storage but below the relevant threshold quantities.
  - Jemena high pressure gas pipeline and Qenos ethylene pipeline located approximately 32 m from the site boundary.
- Development contributions
  - Applicant has accepted a condition for a contribution of \$680,612.14 to Council.