

Springvale Water Treatment Plant Modification 11

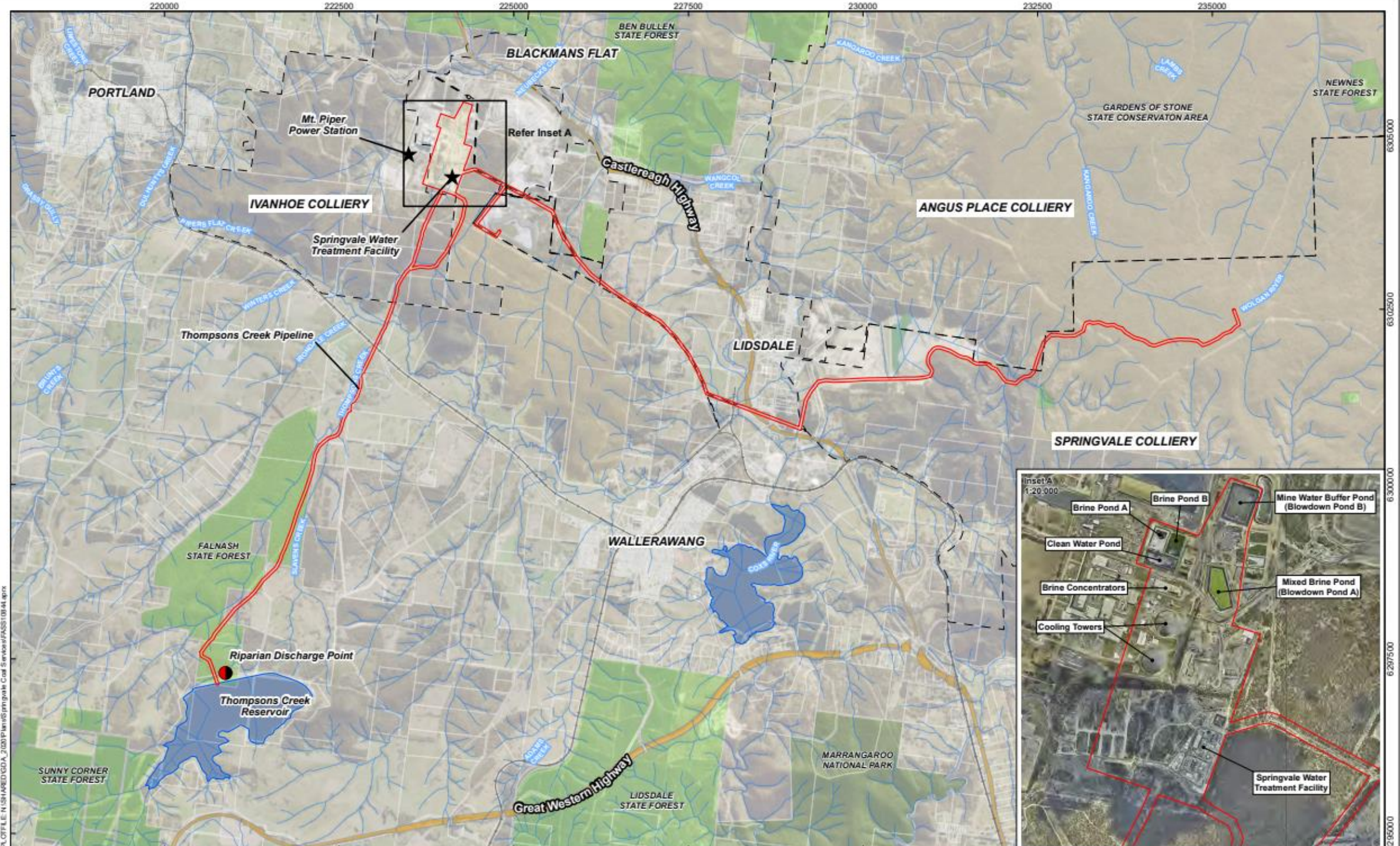
IPC Briefing

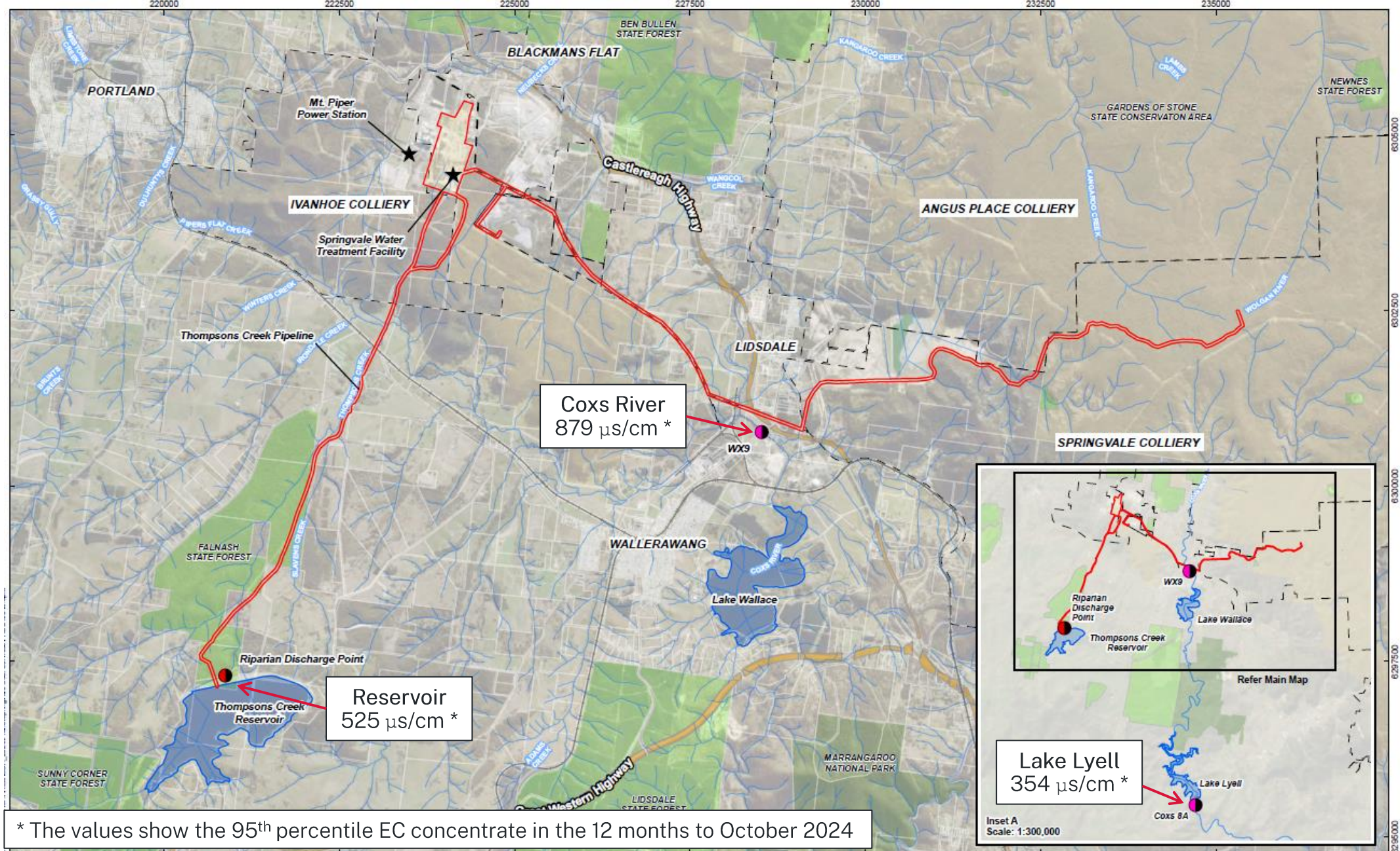
Jessie Evans – Director Energy & Resource Assessments

17 March 2025

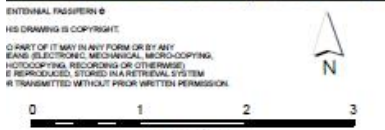
Department of Planning,
Housing and Infrastructure







* The values show the 95th percentile EC concentrate in the 12 months to October 2024



Legend	
	Project Approval Area S9D-7592
	Centennial Colliery Holding
	State Forest
	National Park
	State Conservation Area
	Watercourses
	Energy Australia Monitoring Point
	Thompsons Creek Reservoir Riparian Discharge Point

Drawn	D.MacBain
Checked	N.Lane-Kirwan
Approved	R.Bush
Scale	1:70,000 @ A4

**Springvale WTP
SSD-7592 MOD 11**

Water Quality Monitoring Locations



Modification Application

-
- Approval to transfer the following to Thompsons Creek Reservoir (TCR) during Mount Piper Power Station (MPPS) April/May outage:
 - Up to 24 ML/day of partially treated water; or
 - Up to 42 ML/day of blended water
 - MPPS outage period: 54 days
 - Total transfer period: up to 75 days

Partially treated water

- Water filtered to remove solids only
- EC range: ~ 1,200 $\mu\text{s}/\text{cm}$

Blended water

- Fully treated Reverse Osmosis permeate + partially treated water
 - EC range: 600–900 $\mu\text{s}/\text{cm}$
-

Amendments Made to the Modification

Aspect	Original	Amended
Timeframe of water transfers	During MPPS outages between 2025 and 2038	During the scheduled 54-day MPPS outage in April/May 2025
Water quality transfer limit in TCR	650 $\mu\text{s}/\text{cm}$	600 $\mu\text{s}/\text{cm}$
Environmental releases from TCR	Up to 18.5 ML/day	Limited to minimum daily volume of 0.3 ML/day (winter) and 0.8 ML/day (summer) for the duration of any blended or partially treated water transfers

Additional Mitigation Measures

Aspect	Measure
TCR Capacity	Pre-emptive lowering of the water level in TCR prior to commencing water transfers
	Ceasing transfers to TCR if the High Operating Level of the reservoir is exceeded
Water Quality	Ceasing transfers to TCR if EC levels are likely to exceed 600 $\mu\text{s}/\text{cm}$
	Limiting environmental releases to the minimum daily volume required by WAL
	New continuous water quality monitor in TCR

Reporting

Type	Action
Modification Specific	<p>Notify the EPA and WaterNSW:</p> <ul style="list-style-type: none">• prior to commencing the water transfers; and• if EC levels in TCR exceed 550 $\mu\text{s}/\text{cm}$
Standard condition	<ul style="list-style-type: none">• Annual Review• Reporting requirements under the site environmental management plans