



New
Energy
Development

Wallaroo Solar Farm



Project Overview

246-248 Southwell Rd Wallaroo NSW (adjacent to the ACT border)

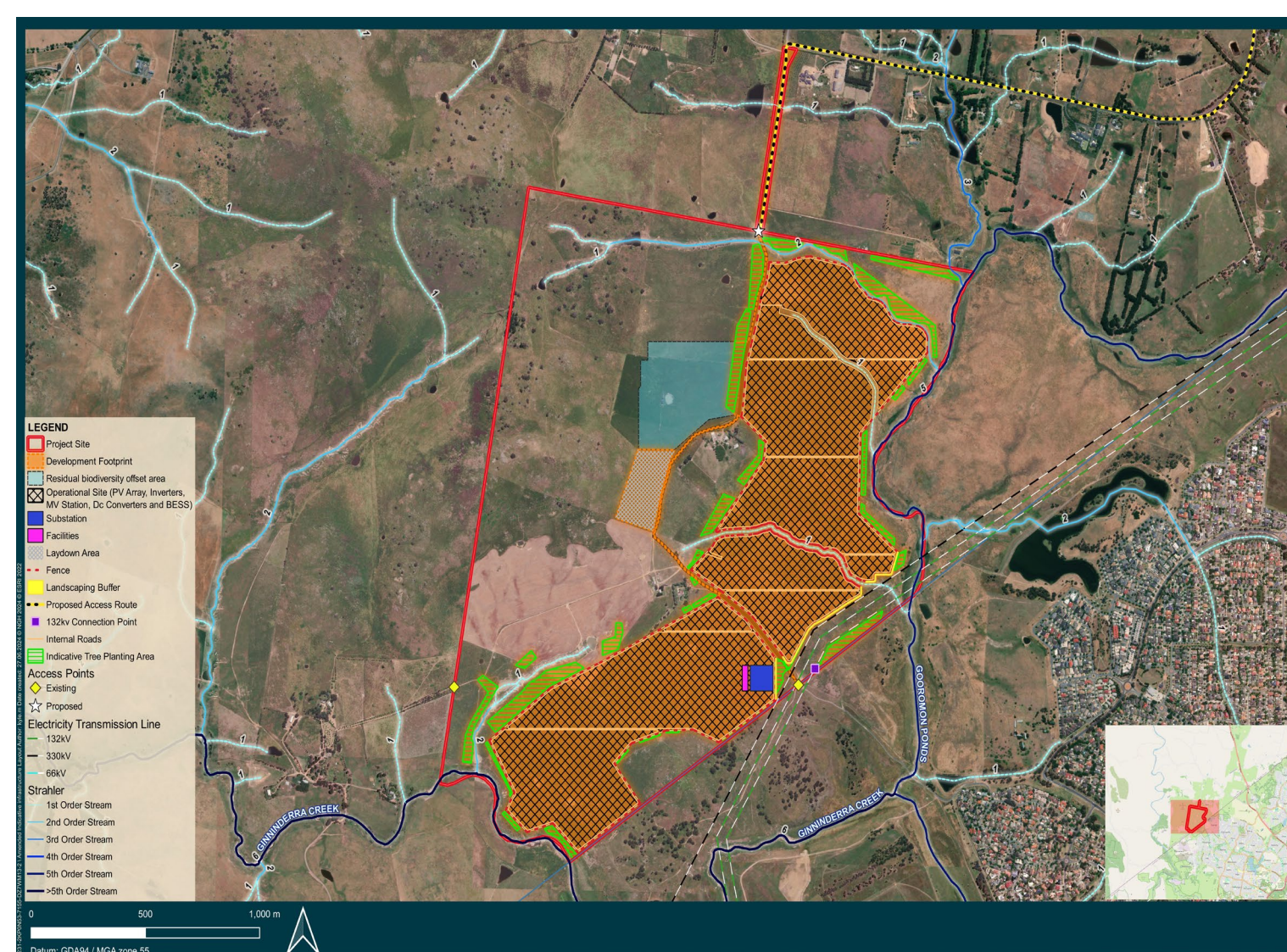
100MW

45MW/90MWH battery

Two landholders, 393 ha site

165 ha development footprint

Existing transmission line with capacity, onsite connection





Effective and compatible use of land

- NSW Large Scale Solar Energy Guideline (2022)
 - Good solar resources and available capacity
 - Minimal impacts
 - Avoids LSC 1-3
 - Available connection capacity
- South East Tablelands Regional Plan 2036
 - Assists in positioning the region as a hub of renewable energy excellence
- Yass Settlement Strategy 2036
 - Maintain agricultural use and production over the short and long term
 - Maintain rural landscape character
 - Limiting the potential for residential development and conflicting land uses





- No BSAL present within the project footprint
- LSC 4 present across project footprint
- Existing farming infrastructure remains unchanged outside of the solar farm footprint
- The site currently grazes cattle and sheep
- Sheep will continue to graze post-construction
- The landowners retain the right to continue grazing sheep on the land



Source: The Guardian



Source: extensionaus.com.au



Visual



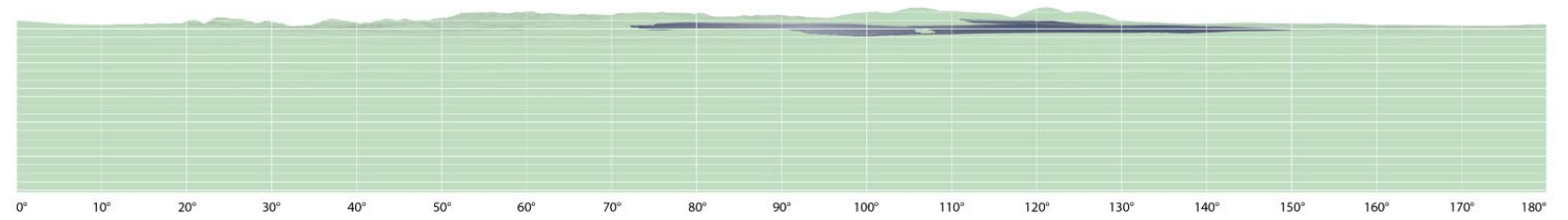
A Landscape and Visual Impact Assessment (LVIA) was completed during the EIS phase of the project. This showed;

- Low impacts on visual amenity and landscape
- Low and very low visual impacts on surrounding receivers (one Representative Viewpoint Moderate before mitigation)
- Site topography and siting, high-density urban dwellings, and existing and proposed vegetation minimise the visibility of the project to surrounding receivers
- Some visibility but no significant impact on broader landscape character

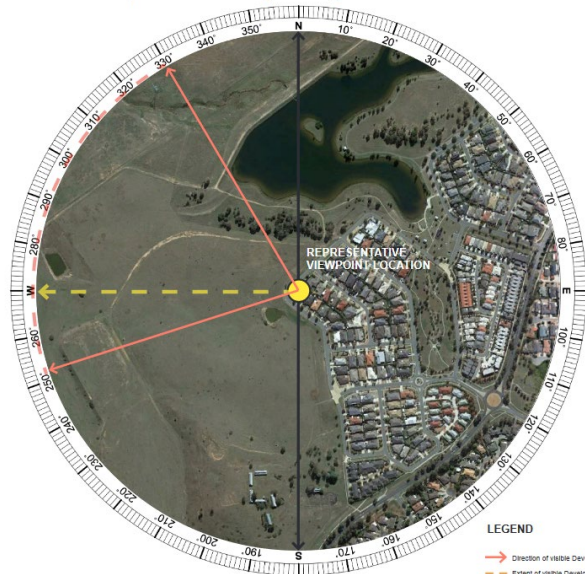
The Landscape and Visual Impact Assessment in conjunction with community consultation, resulted in WSF removing some arrays of panels and making other minor amendments to reduce potential impacts.



Representative receiver R8

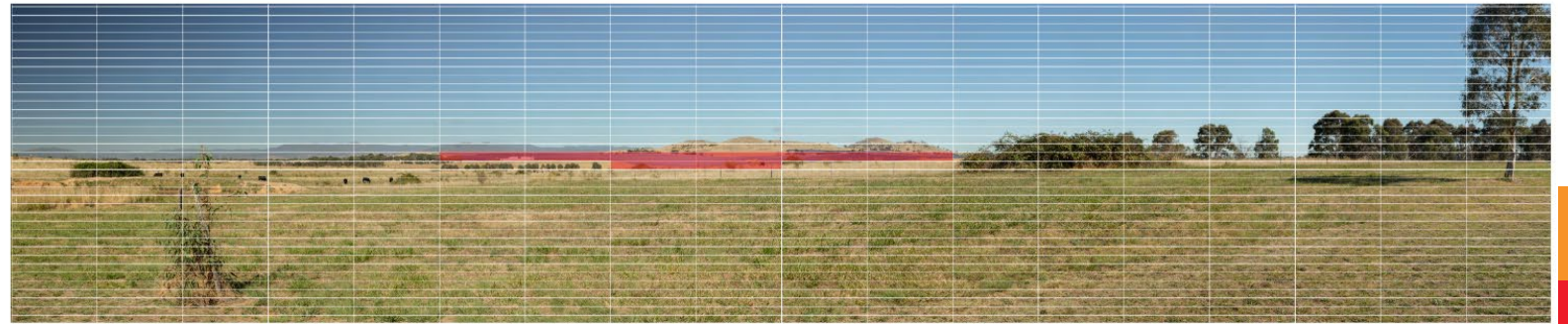


Residential Receptor 08 - Sensitivity and Magnitude

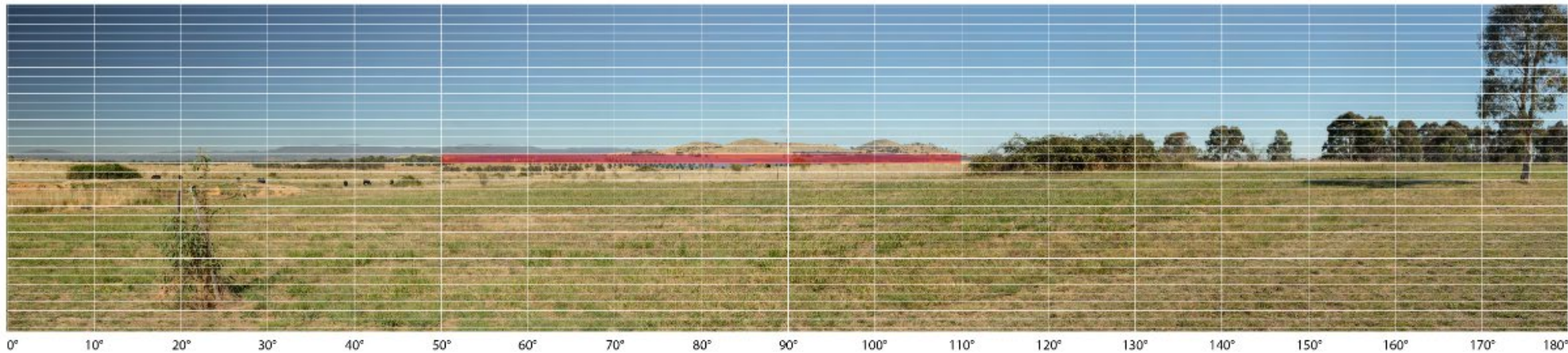
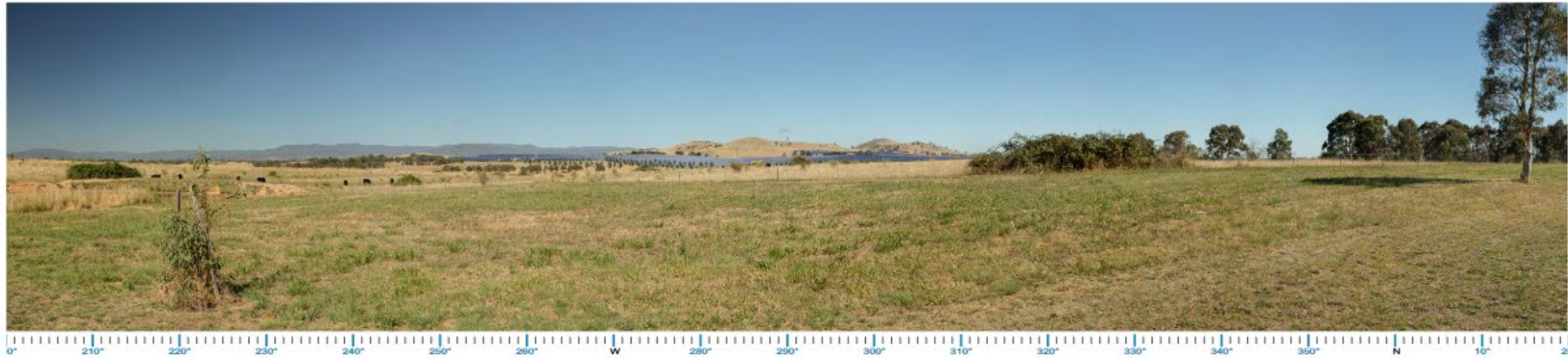


- LEGEND
- Direction of Visible Development Footprint
 - - - Extent of Visible Development Footprint
 - - - Direction of the Wireframe

Aerial Image - Wireframe Location (Aerial Image Source: Google Earth 2019)



Indicative Vegetation Screening at 5 years



Mitigation and Residual Impact Discussion

An assessment based on visual magnitude grid tool over the mitigated photomontage indicates a **Very Low** magnitude rating and a **Low** visual impact rating from this location.

Coordinates	Distance to development:	Viewpoint Type:	Viewpoint Sensitivity:	Scenic Quality:	Overall Sensitivity:	Occupied Cells:	Magnitude Rating:	Visual Impact Rating:
35°11'32.57" S 149° 0'49.16" E	660m	Representative Viewpoint	High	Moderate	High	6	Very Low	Low



Summary of Project Amendments

Wallaroo Solar Farm has been responsive to community concerns regarding the potential impacts of the project. During the development process, the main concern raised by the community was the potential for visual impacts. These concerns were addressed by WSF at multiple stages throughout the development process. Amendments included:

Visual

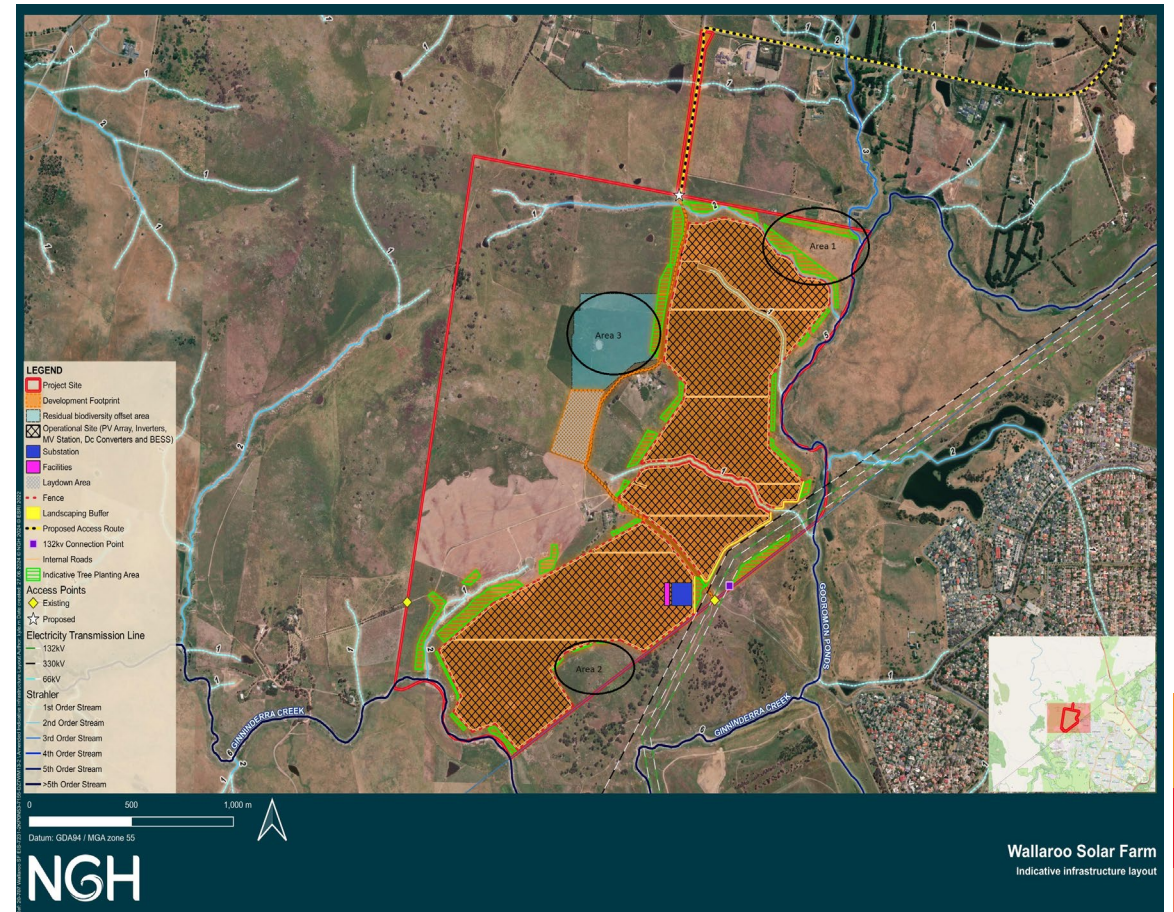
- The removal of panels from the northeast corner of the project(1). This greatly reduced the potential for visual impact on the nearby neighbours.
- Removal of panels from the hill in the southeast corner of the project (2). This was also done due to the potential habitat of the Striped Legless Lizard
- Removal of panels from the northwest portion of the project (3). Decreasing visual impact to ACT and Wallaroo residents
- Operational amendments to avoid glint and glare impacts

Environmental

- Installing an on-site substation in place of transmission lines to the Canberra substation
- Avoidance of native vegetation and rocky habitats

Transport Routes

- Avoiding Southwell Road between Wallaroo Road and Brooklands Road to minimise cumulative impacts with ongoing gully remediation works



Community Benefits



Employment & business

- 150-200 employees at peak construction
- 4-5 full-time employees during operation
- Funds injected into the local economy
- Training and apprenticeship programs through Ginninderry SPARK

Community benefit fund

- The Wallaroo Solar Farm has committed to funding local community and environmental groups
- Community benefit fund to be run by members of the local community, Yass Valley Council and Wallaroo Solar Farm
- Over \$1.6 million over the lifetime of the project: \$150,000 in the first year and \$55,000 every operational year

Wider Community benefits

- 215,000 tonnes of greenhouse gases displaced per year
- Help NSW achieve net zero emissions by 2050
- Produce approximately 260,000 MWH per annum of clean energy

Local Volts

- Discounted energy made available to residents and small businesses within 7km (first come first served basis)
- Residents will save 20-25% on their direct energy costs (does not apply to existing transmission costs, metering costs or daily charges)



New
Energy
Development

Thank You

New Energy Development
Ben Cranston, Founder
+61 474 925 207
ben@newenergydevelopment.com