

# Birriwa Solar and Battery Project

Independent Planning Commission

Public Meeting - Dunedoo

Wednesday 5 June 2024

# Acknowledgement of Country

ACEN Australia acknowledges the Wiradjuri people who are the Traditional Custodians of the Land on which our Birriwa Solar and Battery project is proposed to be located.

We acknowledge the resilience and knowledge of the Traditional Custodians of this Nation.

We pay our respects to elders, past and present, the many Aboriginal people that did not make their elder status and to those that continue to care for Country.

*Future Endeavours-*

Artist: Rick Slaven. Contemporary Aboriginal artist and proud Mowgee / Wiradjuri man  
Artwork commissioned by ACEN Australia



# ACEN Australia

ACEN Australia has several projects located in the Central-West Orana Region of NSW in development;

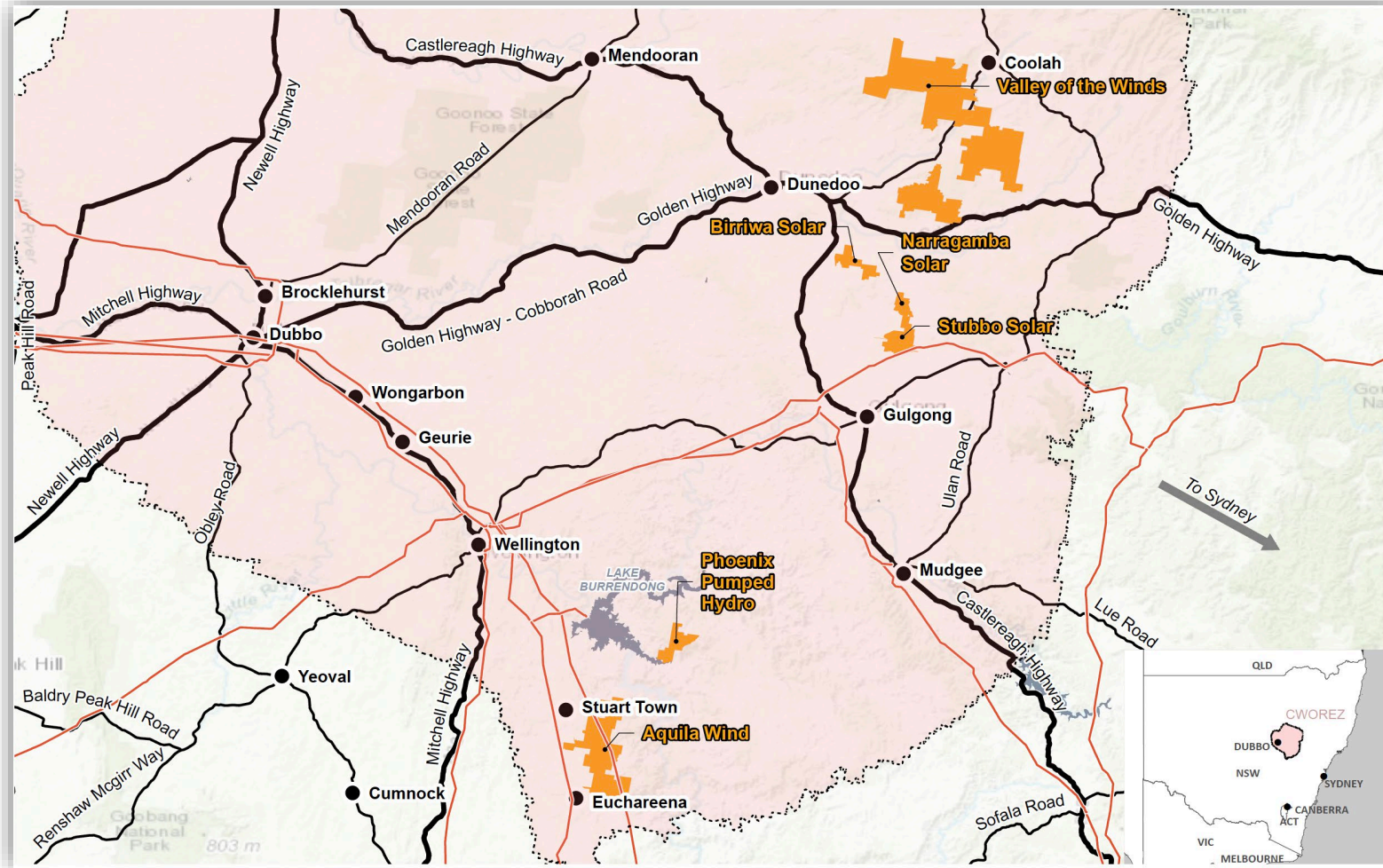
- Valley of the Winds,
- Aquila Wind
- Narragamba Solar
- Phoenix Pumped Hydro

In construction

- Stubbo Solar  
(Gulgong, NSW)

In operations

- New England Solar  
(Uralla, NSW)



# Response to Department's recommended conditions of consent

- The Department's Assessment report adequately reflects and summarises the proposal
- **ACEN Australia is satisfied with the Department's recommended conditions of consent**



Department of Planning, Housing and Infrastructure  
[dpie.nsw.gov.au](http://dpie.nsw.gov.au)



## Birriwa Solar Farm

State Significant Development Assessment Report (SSD-29508870)

May 2024



# Birriwa Solar and Battery project

## At a glance

- 600MW large-scale solar PV electricity generation
- Battery storage 600MW for 2 hour duration (1,200MWh)
- Local road upgrades
- Connection to the proposed CWO REZ (CFG process)



Power up to  
**262,000**  
average Australian  
homes



Contribute to  
NSW target of  
**50%**  
renewable  
energy by 2030



Installed capacity  
of up to  
**600MW**  
PV generation



Employ and  
buy  
**LOCAL**  
commitment



up to  
**500 jobs**  
during peak  
construction



Shared benefits  
through  
**COMMUNITY**  
benefit funding

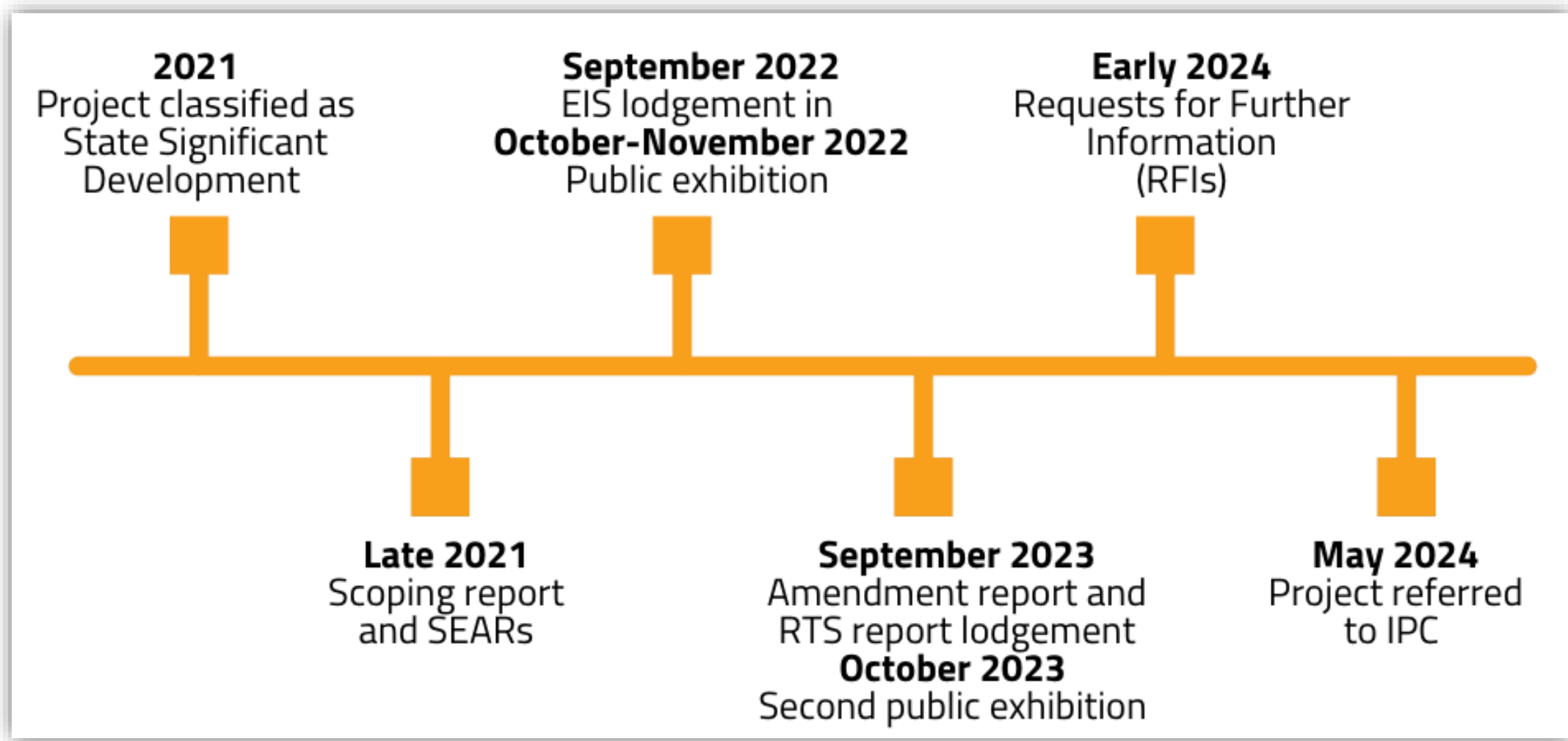


up to  
**600MW**  
**2 hours**  
battery storage

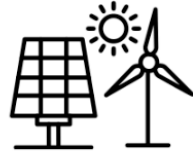


Candidate  
Foundation  
Generator with  
**EnergyCo**  
for CWO REZ

# Development application timeline



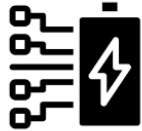
# Project justification and characteristics



Supports the transition away from coal-fired generation



Consistent with relevant Commonwealth, State and regional policies



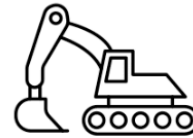
BESS which will help improve grid stability and energy security



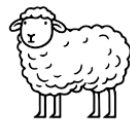
Close proximity to Merotherie Energy Hub



Development footprint: 1,197 hectares of mostly cleared sheep/cattle grazing and dry land cropping



Construction over approx. 28 months



Opportunity to build on our success of solar grazing



Access route from the Port of Newcastle to the project site



Excellent solar resources



Workers accommodation facility for up to 500 workers



# Temporary worker's accommodation facility



Limit the impact on regional housing availability and affordability



Enable the region's thriving tourism industry to flourish



Offer contracting and employment opportunities for local providers for the construction and servicing of a facility



Maintain the current social fabric of communities, including security and traffic by limiting the majority workforce to one location

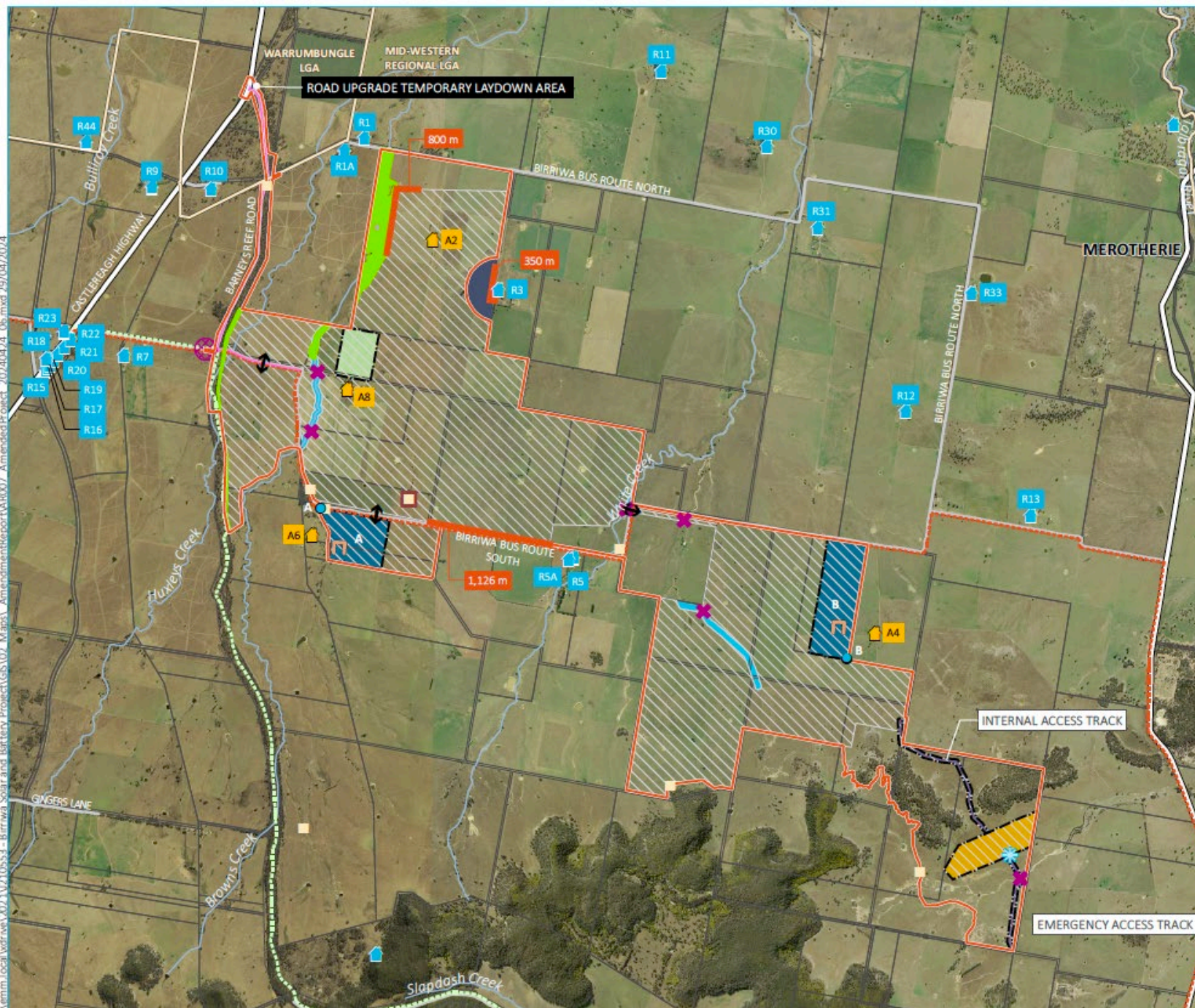


Offer a positive health and well-being experience for workers through appropriate accommodation design



Potentially provide local government or other entities with accommodation facilities that can be re-used to meet community needs in the future





**KEY**

**Project layout**

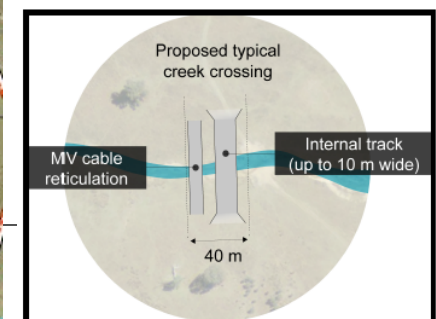
- Project area
- Development footprint
- Road upgrade corridor
- Restricted development area
- Vegetation to be retained
- Potential public road crossing location
- Potential creek crossing point (refer to inset below for indicative design)
- Connection point (option A or B)
- Indicative noise wall location
- Solar panel setback
- Landscape screen planting
- Project access point
- Project emergency access point
- Proposed operational infrastructure area including substation, operational facility and BESS (option A or B)
- Accommodation facility
- Temporary construction compound

**Existing environment**

- Dwelling not associated with the project
- Dwelling associated with the project
- Aboriginal heritage site (to be salvaged)
- Aboriginal heritage site (to be avoided)
- Major road
- Minor road
- Named watercourse
- Cadastral boundary
- Local government area boundary

**Central West Cycle (CWC) Trail**

- CWC main route - Gulgong to Dunedoo
- CWC alternate route - Slap Dash Creek side trail



Source: EMM (2023); DFSI (2017, 2023); GA (2011); ACEN (2023)



# Community engagement and consultation

ACEN Australia recognises the importance of early and effective engagement with communities and stakeholders.

We are committed to implementing a transparent and inclusive approach to working with communities and stakeholders who may be directly and indirectly impacted by our projects.




# Sharing in the benefits

- Social Investment Program (SIP)
- Neighbouring Property Benefit Scheme (NPBS)
- Voluntary Planning Agreement (VPA)



# Ongoing commitment to engagement





## Social Participation and Communications Policy

Built on a foundation of trust and shared value, ACEN Australia seeks to develop relationships with communities that create enduring and positive impact.



How we do this:

- Engage early and often, and listen to the full range of community views, including those from minority groups
- Communications about our business and activities is transparent
- Understand and value the diversity of Aboriginal and Torres Strait Islander and non-Indigenous cultures, rights, experiences and heritage as an integral part of our shared Australian identity
- Encourage social participation in our activities through procurement, employment and training streams
- Social investments contribute to building thriving and resilient communities and economies
- Relationships and commitments are long term, integrated into whole-of-business processes and full project life-cycle
- Be guided by industry and global standards including the [Clean Energy Council Best Practice Charter](#) and the [United Nations Sustainable Development Goals](#)
- Integrate activities into full project life-cycle and business systems to monitor, measure and report on our performance

**David Pollington**  
Managing Director  
ACEN Australia  
November 2023



## Birriwa Solar and Battery Project Community engagement plan As at April 2024



## BEST PRACTICE CHARTER FOR RENEWABLE ENERGY PROJECTS

We commit to honouring the Clean Energy Council's Best Practice Charter in our renewable energy projects and associated transmission infrastructure:

- 1 We will engage respectfully with the local community, including Traditional Owners of the land, to seek their views and input before submitting a development application and finalising the design of the project.
- 2 We will provide timely information and be accessible and responsive in addressing the local community's feedback and concerns throughout the life of the project.
- 3 We will be sensitive to areas of high biodiversity, cultural and landscape value in the development and operation of projects.
- 4 We will minimise the impacts on highly productive agricultural land and explore opportunities to integrate agricultural production.
- 5 We will consult the community on the potential visual, noise, traffic and other impacts of the project, and on the mitigation options.
- 6 We will support the local economy by providing local employment and procurement opportunities.
- 7 We will offer communities the opportunity to share in the benefits of the project, and consult them on the options available, including relevant governance arrangements.
- 8 We commit to using the project to support educational and tourism opportunities where appropriate.
- 9 We will demonstrate responsible land stewardship over the life of the project and welcome opportunities to enhance the ecological, cultural and/or agricultural value of the land.
- 10 During the life of the project, we will recycle waste materials where feasible and commit to responsible decommissioning or refurbishment/repowering of the site at the end of the project's life.



