

Concerns and Recommendations: Dr Julian Prior

- **High value biodiversity conservation area**, in terms of terrestrial & aquatic species & communities, & as a climate-change refuge zone
- **Inadequate and manipulative community consultation**, with no opportunity to interrogate the technical consultants
- No adequate **aquatic ecology impact assessment (Bell's Turtle?)**
- Inadequate assessment of impacts on **catchment processes, soil erosion, and turbidity**, and **aquatic ecology** resulting from tree clearing, road construction, and turbine foundation pads, on undulating to steep land and on highly erodible soils

Recommendations: require that the proponent

1. Undertake an appropriate community-level consultation where their technical consultants can be interrogated by the community regarding their impact assessments and mitigation measures
2. Undertake a scientifically rigorous aquatic ecology impact assessment
3. Undertake a proper analysis of development impacts on catchment processes, soil erosion, and turbidity

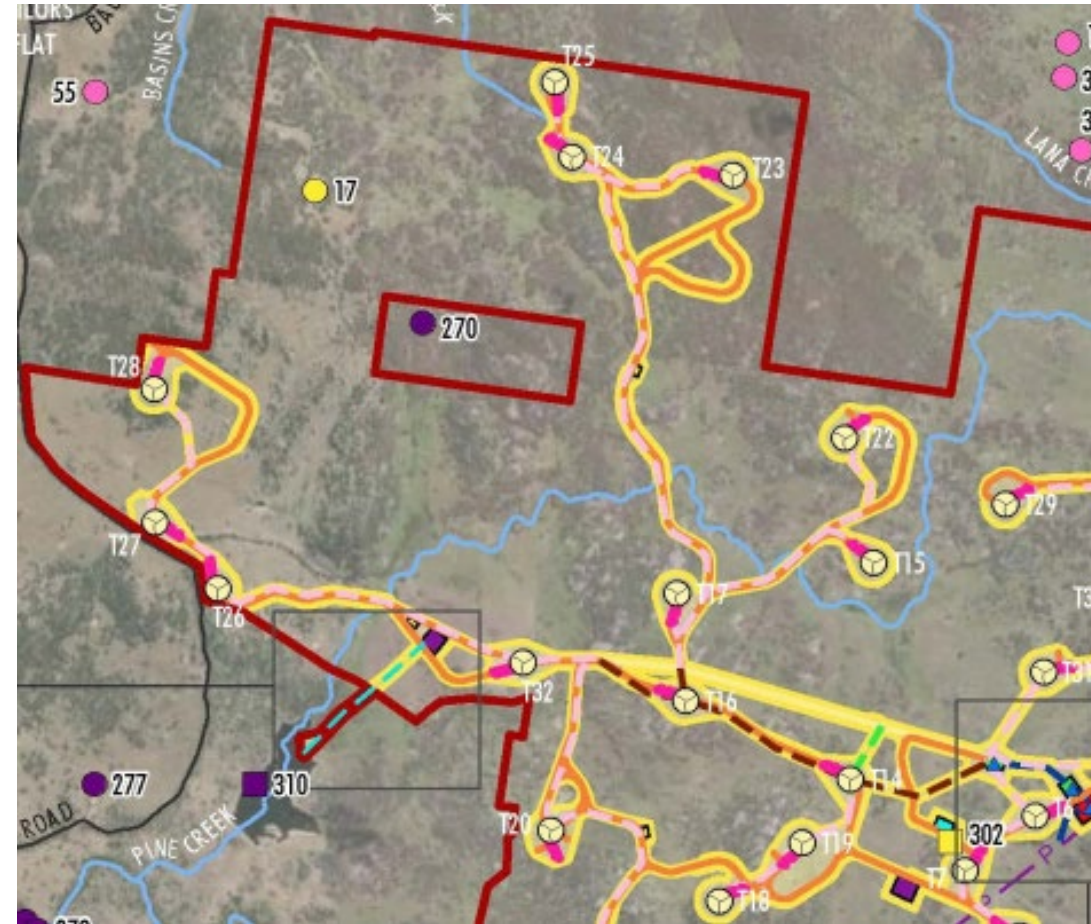


Image courtesy Development Consent.