



**OVERLAND**  
SUN FARMING

# Orange Grove Sun Farm

Orange Grove Sun Farm Pty Ltd



# Project Location

Gunnedah, NSW

---

The Project Site is located approximately 12km north-east of Gunnedah in the Gunnedah local government area, within an 817 ha site.

The Project Site is relatively flat, sloping gently from east to west with the lowest point in the south-west.





# Site Location

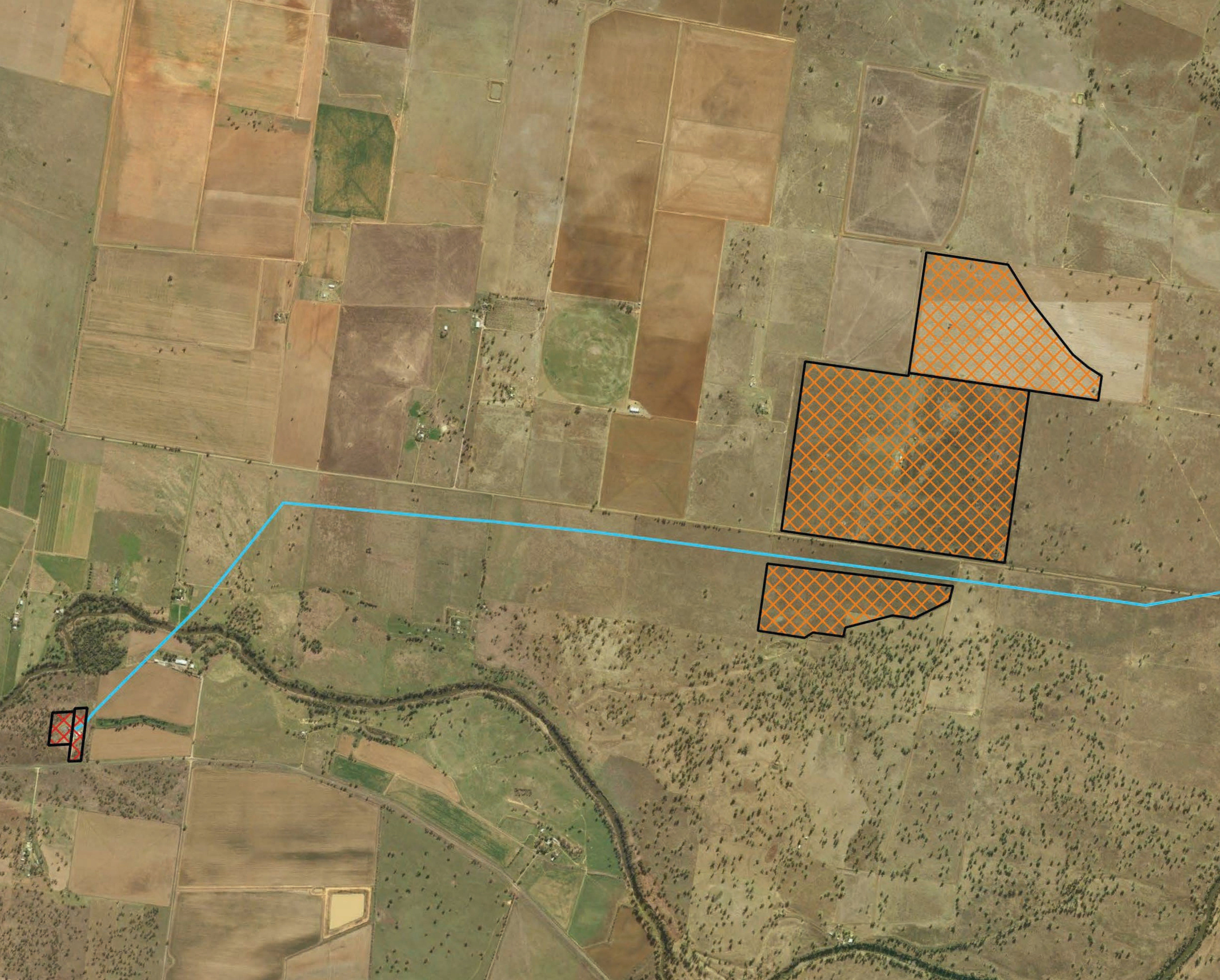
Gunnadah, NSW

---

The Development Footprint is approximately 248ha and is divided by Orange Grove Road into two portions, northern and southern.

The land surrounding the Project Site is zone RU1 and is predominantly used for grazing and cropping.

The Namoi River is approximately 2km south of the development footprint.





## Why we selected the Site

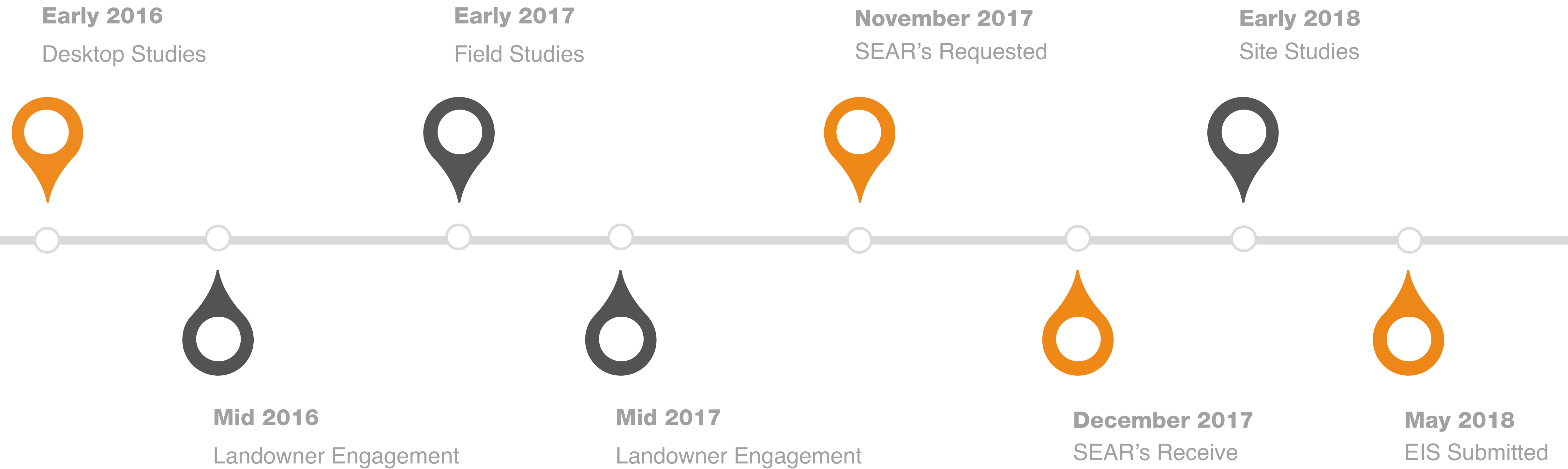
---

- Minimal vegetation removal
- Minimal biodiversity impact
- Accessibility to electrical grid
- Solar yield
- Minimal visual impact
- Minimal heritage impact
- Access to major transport routes



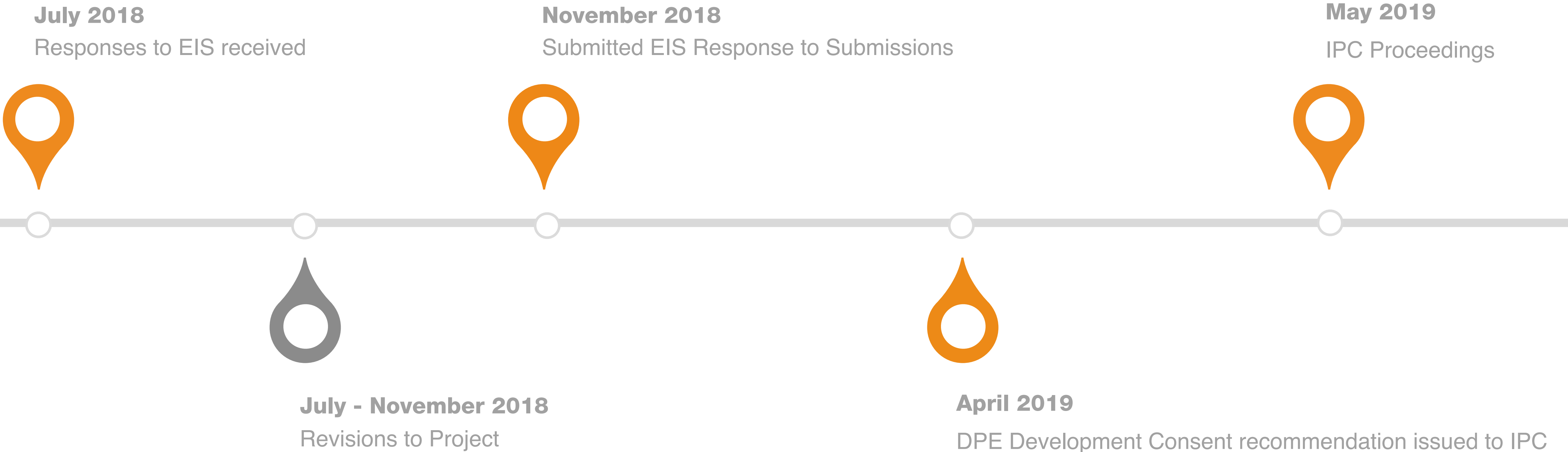
# PROJECT TIMELINE

ORANGE GROVE SUN FARM



# PROJECT TIMELINE

ORANGE GROVE SUN FARM





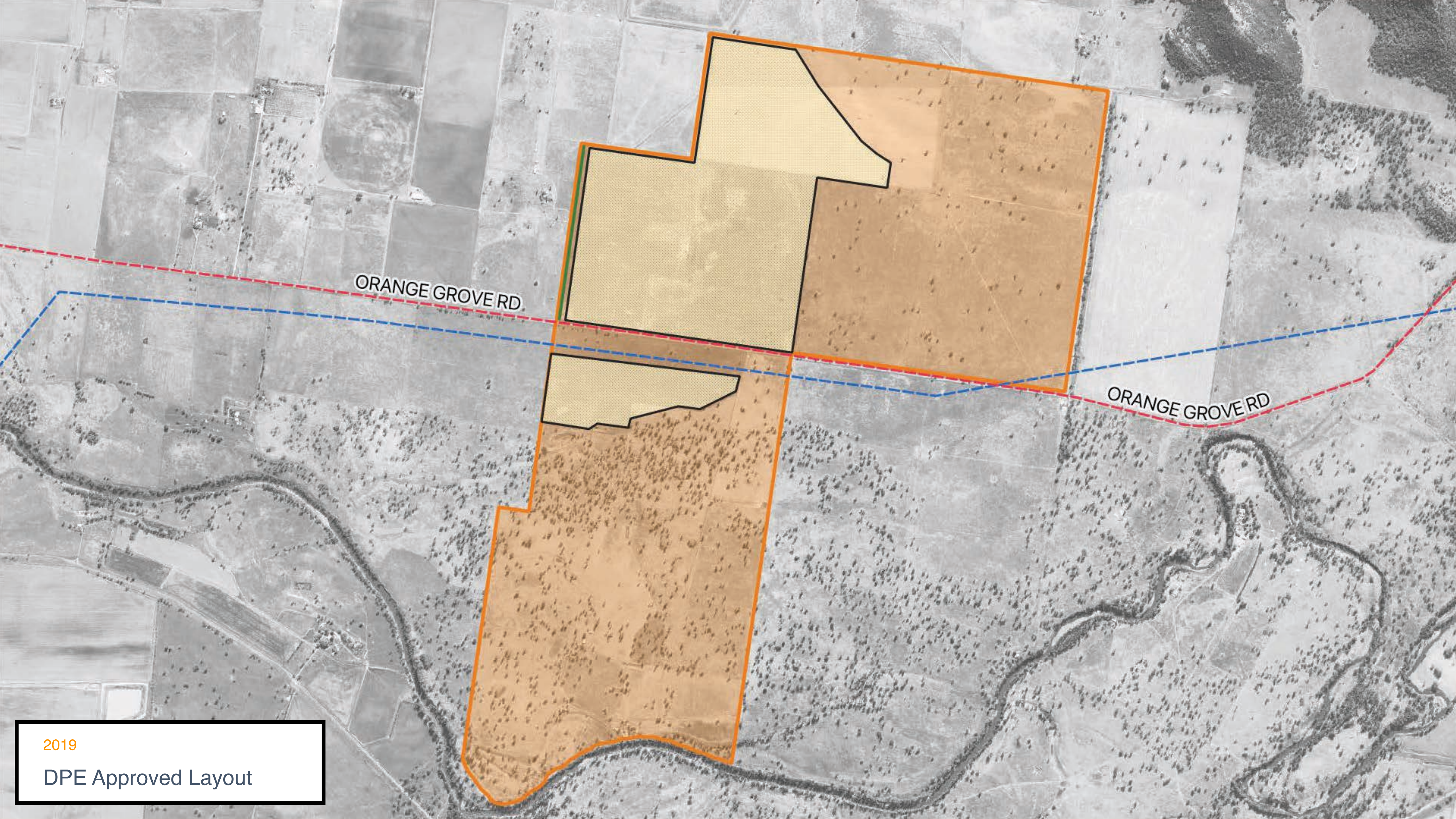
# Project Revisions

Gunnedah, NSW

---





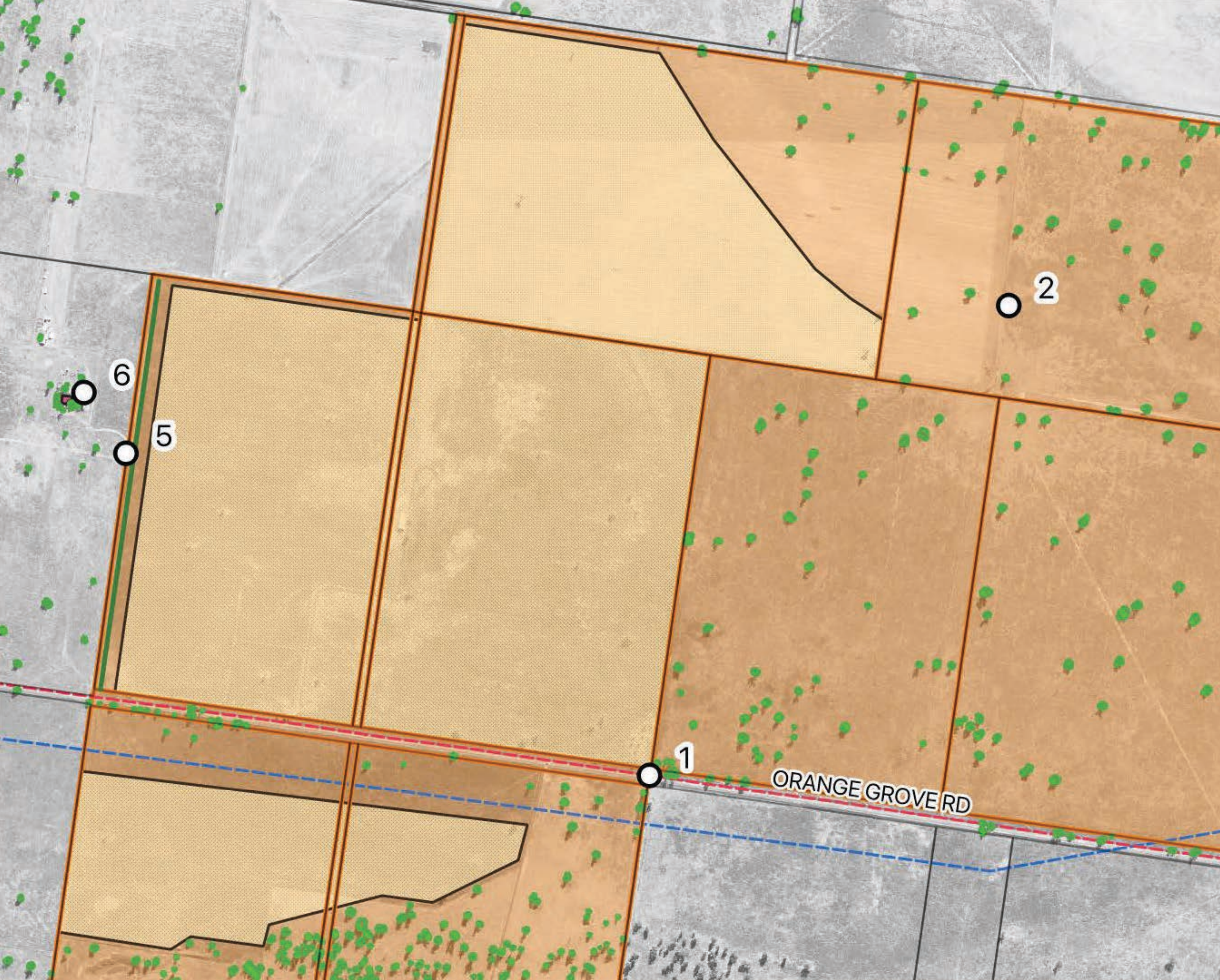


ORANGE GROVE RD

ORANGE GROVE RD

2019

DPE Approved Layout



# Revision

Overall area reduction



Reduced the total area of the Development Footprint by approximately 5 ha

Reduced the area of the Development Footprint located north of Orange Grove Road by approximately 41 ha

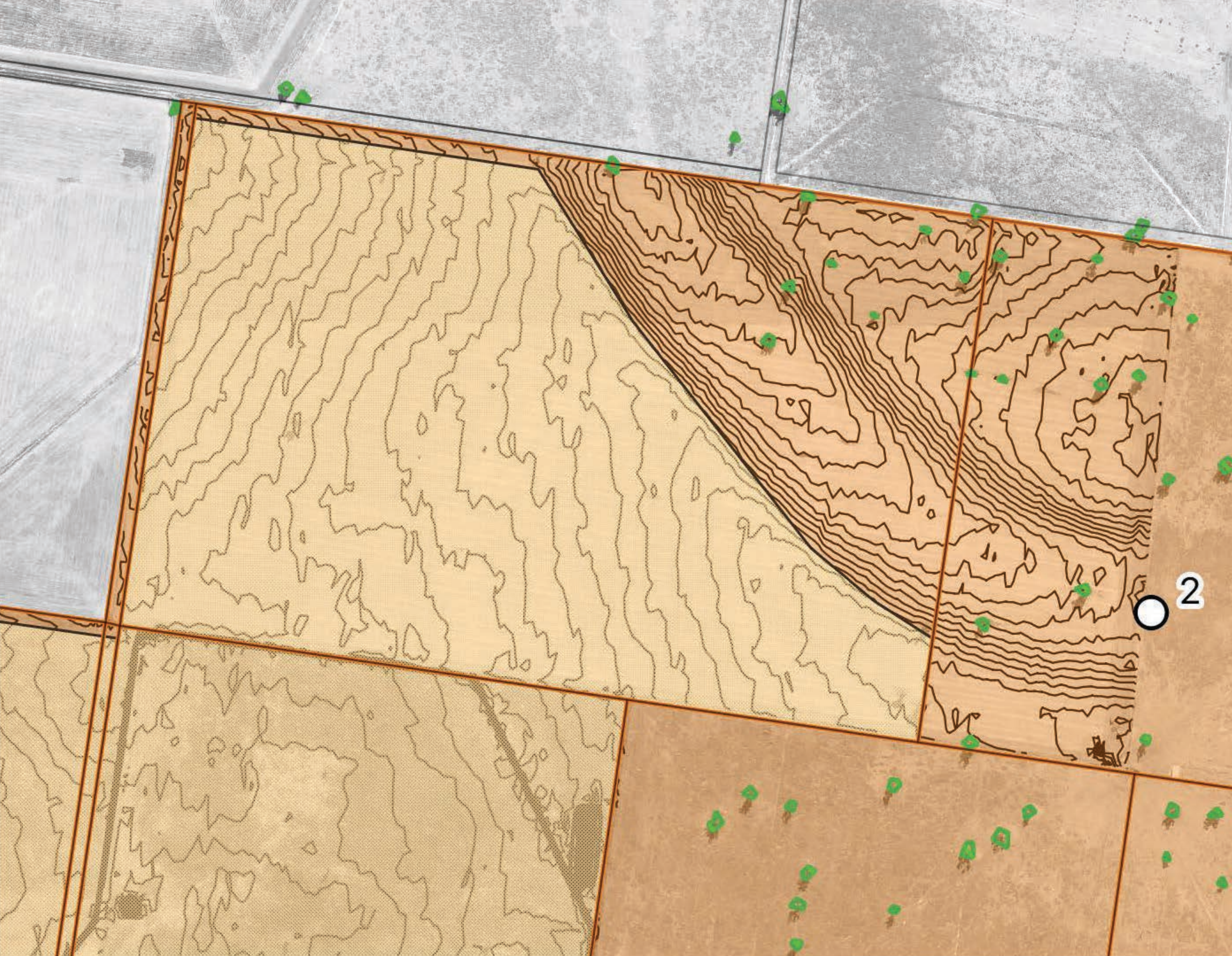
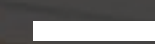
Increased the area of the Development Footprint located south of Orange Grove Road by approximately 36 ha

Reduced project related boundaries in common with non-participating landowners by approximately 0.5 km

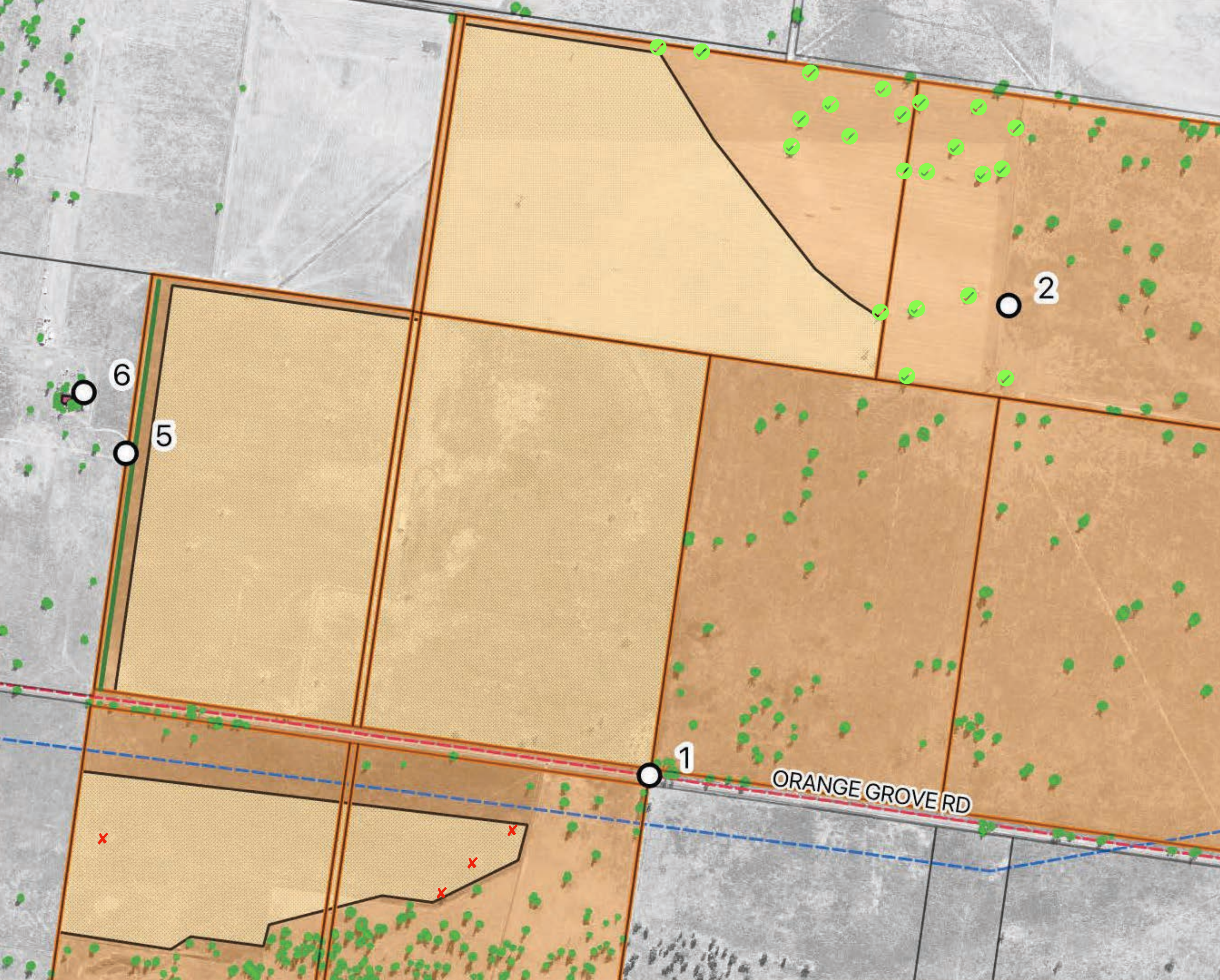


# Revision

Removed all infrastructure from first order watercourse



Assessed flows in the first order water course against the draft Floodplain Management Plan for the Upper Namoi Valley floodplain and as a result removed all infrastructure from the first order watercourse (including an addition of an buffer)

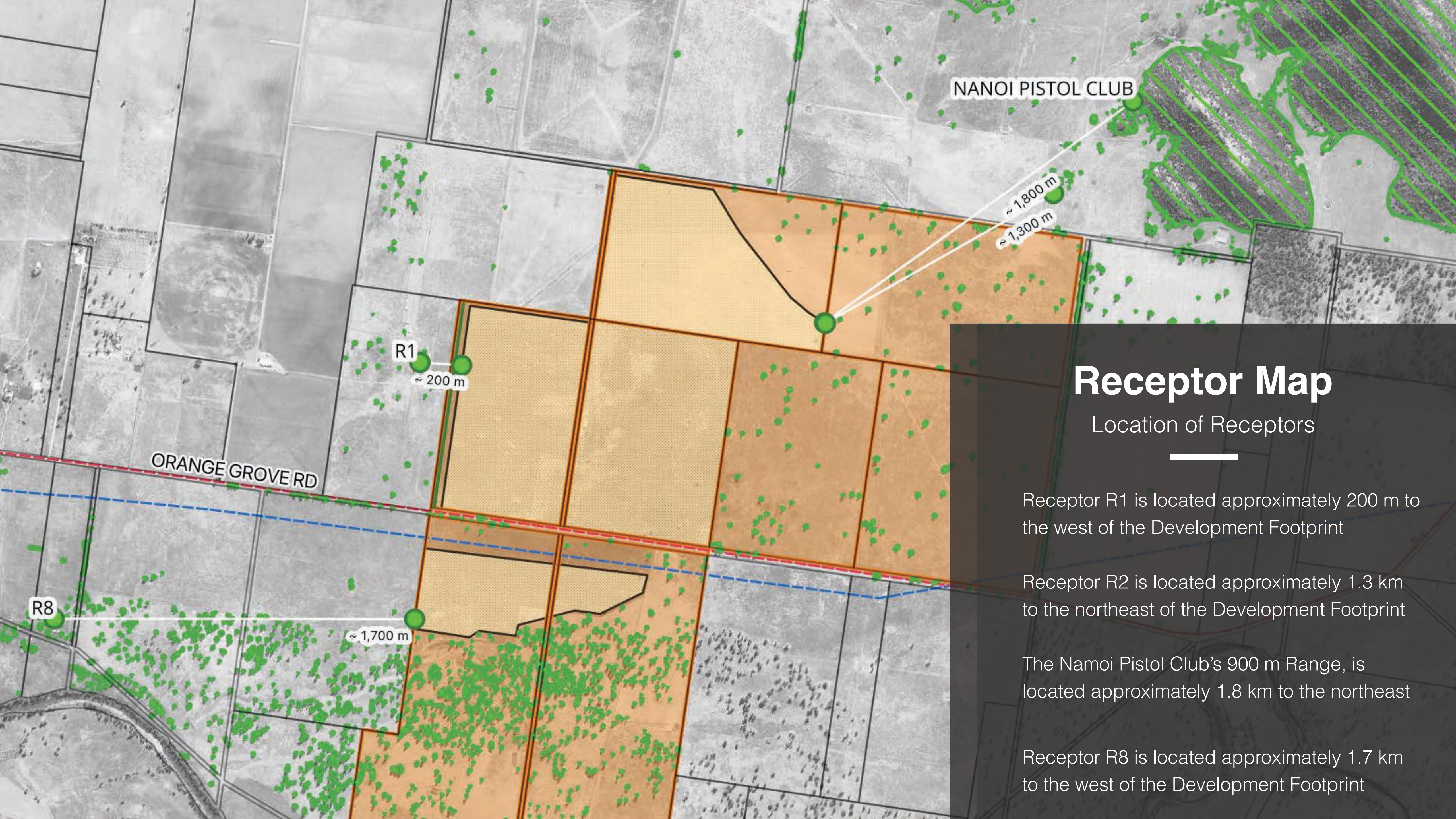


# Revision

Decreased Biodiversity Impact

Reduced the total number of mature trees required to be cleared within the revised development footprint by approximately 18.

The vegetation integrity score of the revised development site remains at less than 15 and only disturbs native vegetation of low quality (BAM (OEH 2017)).



# Receptor Map

Location of Receptors

Receptor R1 is located approximately 200 m to the west of the Development Footprint

Receptor R2 is located approximately 1.3 km to the northeast of the Development Footprint

The Namoi Pistol Club's 900 m Range, is located approximately 1.8 km to the northeast

Receptor R8 is located approximately 1.7 km to the west of the Development Footprint



## Revision

Infrastructure Setback to R1



Increased the distance between receptor R1's property boundary and the infrastructure boundary by 50 m

Distance between receptor R1 and the infrastructure boundary is now approximately 200 m





# Revision

Vegetative Screening



Establishment and maintenance of a mature vegetative buffer along the boundary in common with receptor R1 and the western side of the Development Footprint.



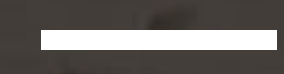
ORANGE GROVE ROAD

R1



# Revision

Setback to R1 Property



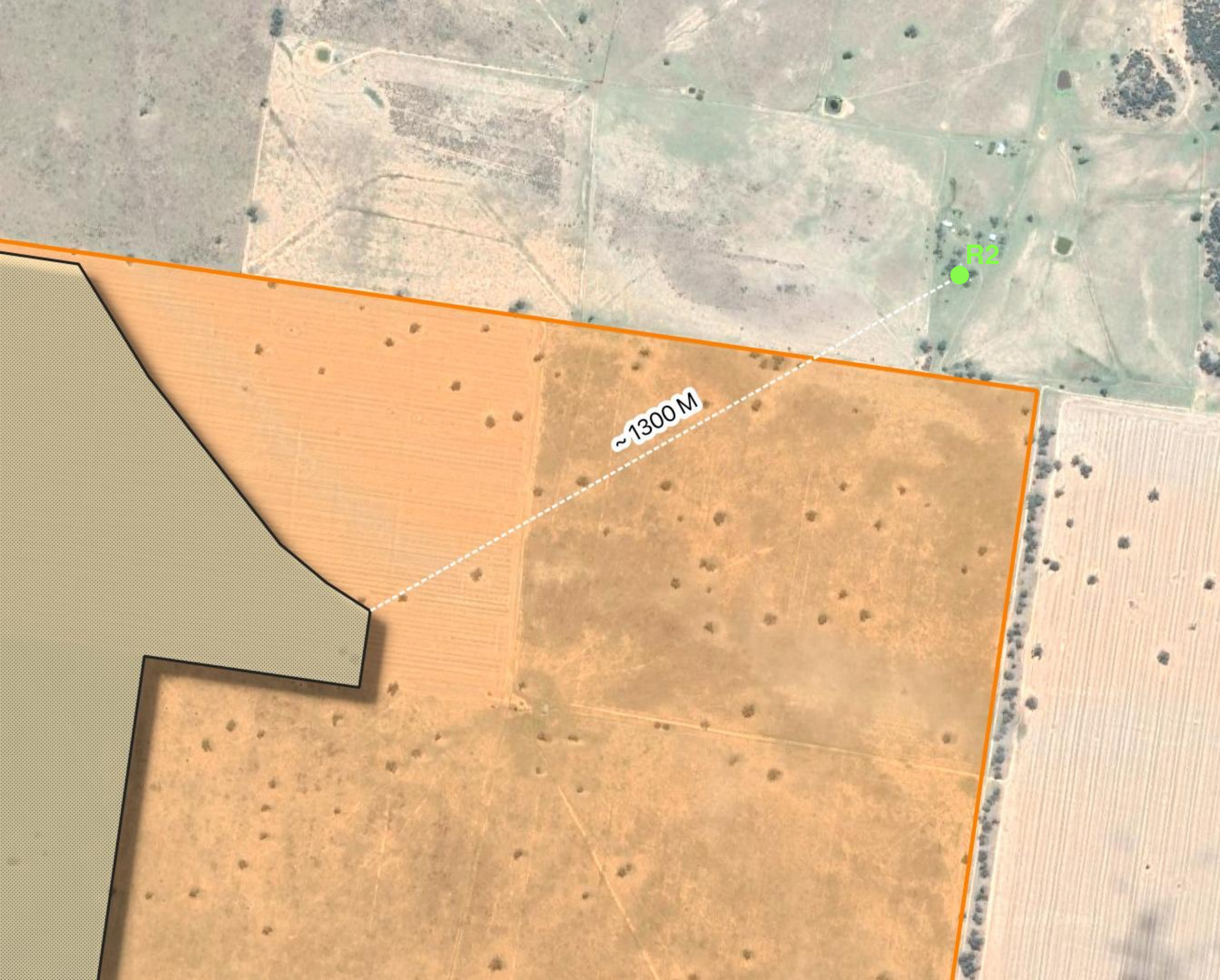
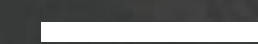
Established a 20 m setback for project infrastructure along the balance of the common boundary between the project and receptor R1's property





## Revision

Setback to R2



Increased the separation distance between receptor R2 and nearest project related infrastructure by approximately 500 m to an approximate total of 1.3 km

Retained approximately 18 trees between receptor R2 and the Development Footprint



## Revision

Removed common boundary to R2

---

Removed the common boundary between the Development Footprint and receptor R2's property, resulting in a minimum separation to project related infrastructure of approximately 260 m





## Revision

Increased setback to Namoi Pistol Club



Increased the separation distance between the Namoi Pistol Club's 900 m Range and the nearest project related infrastructure by approximately 550 m to an approximate total of 1.8 km



# Thank You

Orange Grove Sun Farm



[www.overlandsunfarming.com.au](http://www.overlandsunfarming.com.au)