



# Duralie Open Pit Modification Planning Assessment Commission

Duralie Coal Mine

25 November 2014



# Duralie Open Pit Modification

## Meeting Agenda:

1. Modification Overview
2. Submissions
3. Summary of Assessment Findings
4. Stratford and Duralie Interdependency

# Modification Overview

## Modification summary:

- Pit shells:
  - Clareval pit depth increase
  - 2.5 ha increase to surface extent (1.8 ha derived grassland and 0.7 ha vegetation)
- Additional depth of pit due to complex geology.
- Mining sequence – revised progression of mining in the open pits.
- Reduced angle of Clareval pit low wall – improve geotechnical stability and operational safety.
- Waste emplacement height – approximate increase of 25 m.

# Modification Overview

## Duralie Modification justification

- Enable extraction of currently approved Duralie coal reserves.
- Enable continuity of supply to Stratford for the remainder of Duralie's currently approved life.
- Enables continuity of employment at both Stratford and Duralie of 231 personnel.
- Without the Modification, Duralie overburden would require double-handling, rendering the DCM uneconomic as early as March 2015.



# Modification Overview

## No change to:

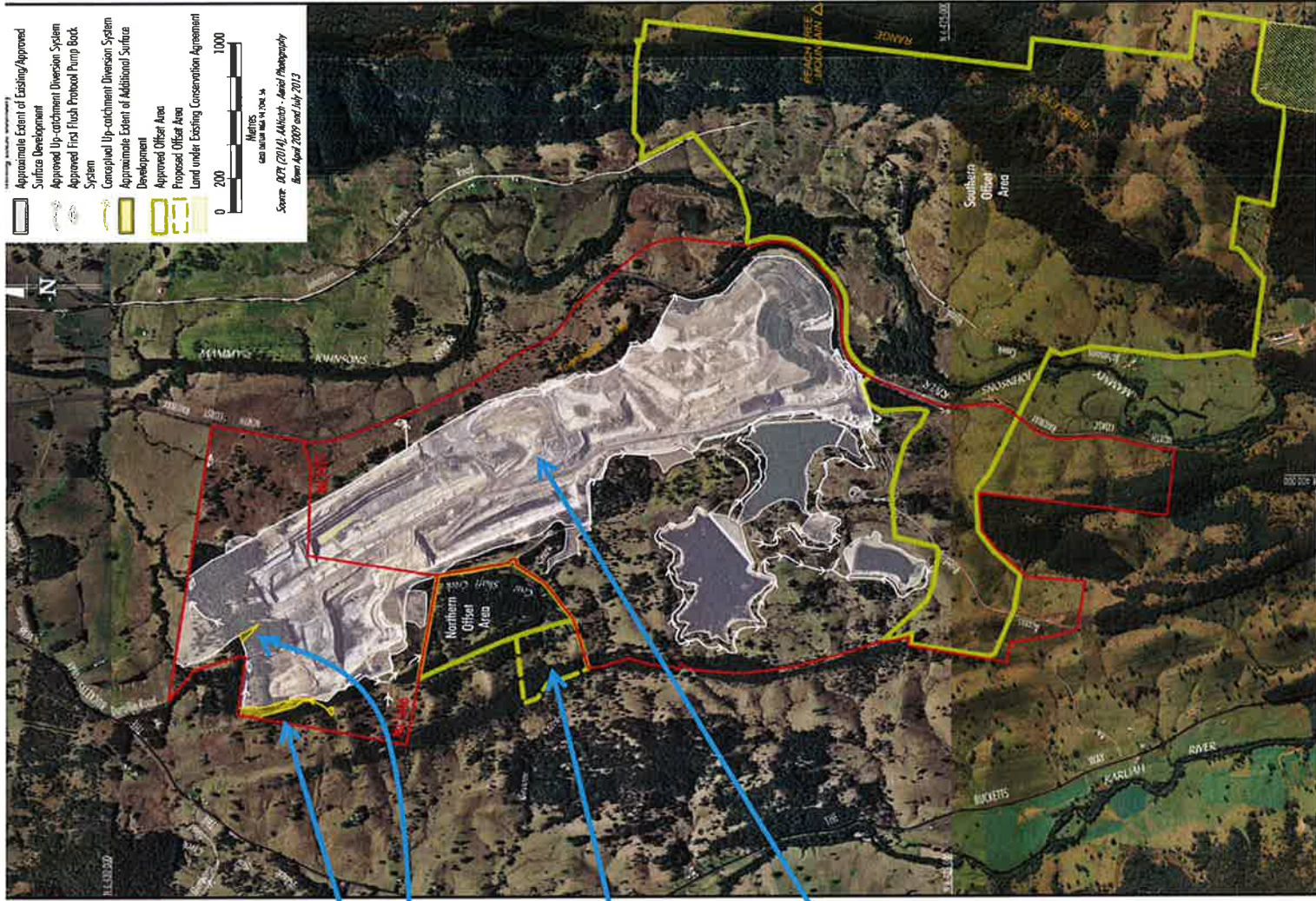
- ROM coal or waste rock extraction rates. • Mining method.
- Project life. • Mine fleet.
- Employment. • Mining leases.
- Hours of operation. • Rehabilitation.
- Rail movements. • Power supply.
- Coal seams mined. • Deliveries.

# Modification Overview

**Extent of additional surface development – 2.5 ha**

**Modification Biodiversity Offset – 12.5 ha**

**Modified waste rock emplacement elevation**



# Submissions

## **Government Agencies Submissions**

- Seven submissions from government agencies.

## **Council**

- **No objection** from Great Lakes Council.

## **Members of the Public / Organisations (non-government)**

- Two public submissions expressing support/providing comment.
- One public submission objecting to the Modification:
  - 38 identical copies signed by individual members of the public / organisations
- Six additional public submissions objecting to the Modification.

# Key Assessment Findings

## Noise

- Predicted compliance with existing noise limits.
- No noise related issues raised by government agencies.

## Water

- No change to water management required.
- NSW Office of Water recommended conditions of approval.

## Biodiversity

- OEH supports biodiversity offset for additional surface disturbance.

## Visual

- Visibility of landforms similar to approved DCM.



# Stratford and Duralie Interdependency

## Stratford and Duralie

- Without Duralie coal, operations at Stratford would shut down.
- Yancoal is currently washing and then transporting Duralie coal only at Stratford.
- Product coal is sub-optimal compared to historic Stratford and Duralie blended export product
  - consequential financial losses.
- Currently impossible to blend Duralie and Stratford coal – there is no Stratford coal supply.
- Stratford coal supply can only recommence if the Stratford Extension Project is approved
  - The SEP is currently unapproved (despite application lodged in 2011)
  - PAC determination timing unknown/uncertain.

**End**