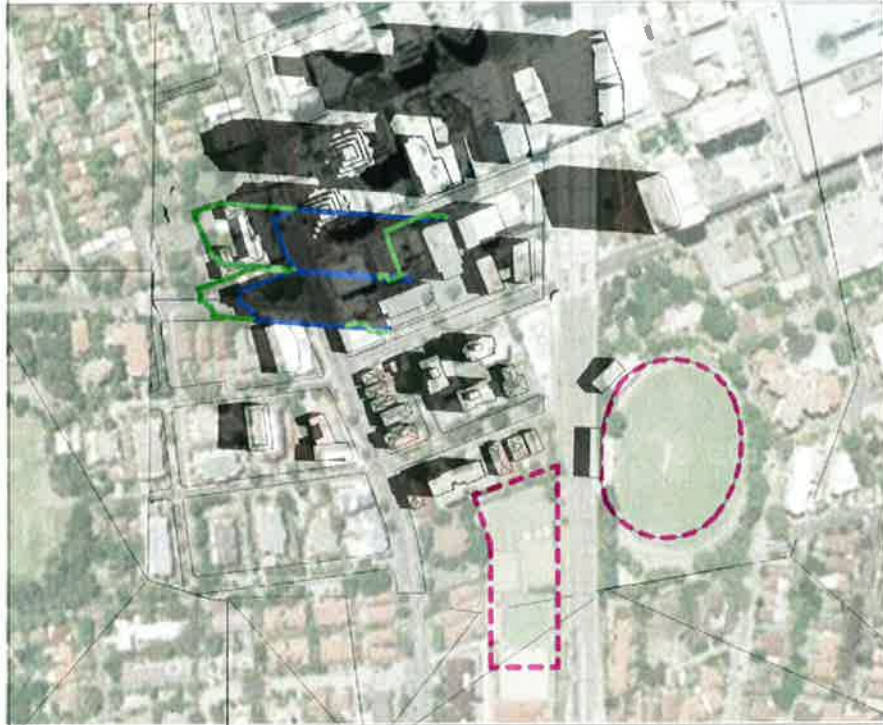


9 AM, 21 DECEMBER

12 PM, 21 DECEMBER

1 PM, 21 DECEMBER



2 PM, 21 DECEMBER

3 PM, 21 DECEMBER



DRAWINGS ADDED

SHADOWS REVISED TO REFLECT BUILDING HEIGHT CHANGE

DRAWINGS ADDED



LEGEND

- SHADOW CAST BY APPROVED MODIFICATION 3
- SHADOW CAST BY ORIGINAL MODIFICATION 6
- SHADOWS (INCLUDING REVISED MODIFICATION 6)
- SHADOW CAST BY EXISTING BUILDINGS
- OUTLINE OF OVAL & CROQUET CLUB

Revisions

F Revised Modification 6	07/12/2013
D S75W Modification 6	06/2013
C Section 75W Submission	11/2012
B EA Submission	18/12/09
A Submitted for Test of Adequacy	09/11/09

Do not scale from drawings. Verify all dimensions on site before commencing work. Copying or the reproduction of this drawing is strictly prohibited without the consent of PTW Architects P/L.

Client: Meriton Group, Level 11 Meriton Tower, 528 Kent St., Sydney NSW 2000

Architect: PTW Architects, Level 13, 9 Castlereagh St, Sydney NSW Australia 2000, T 612 0232 6977, F 612 9221 4139, www.ptw.com.au

Contractor:

Consultants

- Planner
- Structural
- Services
- Landscape
- Acoustics
- Traffic

MERITON THOMAS STREET

Thomas Street/ Albert Avenue, Chateauwood NSW 2067

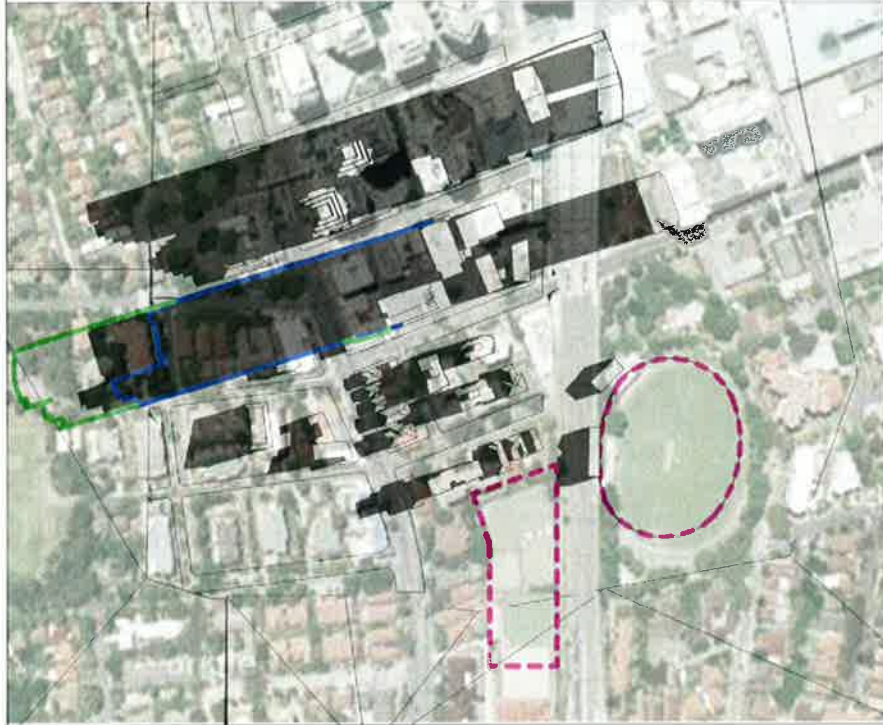
Project No: 212007, Scale: As indicated @A1, Date: 31/12/2013 6:56:42 PM, Drawn, Checked, Approved

SHADOW DIAGRAM 21 DECEMBER

9 AM, 21 MARCH

12 PM, 21 MARCH

1 PM, 21 MARCH



2 PM, 21 MARCH

3 PM, 21 MARCH



DRAWINGS ADDED

SHADOWS REVISED TO REFLECT BUILDING HEIGHT CHANGE



LEGEND

- SHADOW CAST BY APPROVED MODIFICATION 3
- SHADOW CAST BY ORIGINAL MODIFICATION 6
- SHADOWS (INCLUDING REVISED MODIFICATION 6)
- SHADOW CAST BY EXISTING BUILDINGS
- - - OUTLINE OF OVAL & CROQUET CLUB

Revisions

E. Revised Modification 6	09/12/2012
D. S7&W Modification 6	06/2013
C. Section 7&W Submission	11/2012
B. EA Submission	18/12/09
A. Submitted for Test of Adequacy	06/11/09

Do not scale from drawings. Verify all dimensions on site before commencing work. Copying or the reproduction of this drawing is strictly prohibited without the consent of P.W. Architects P/L.

Client:
Meriton Group
Level 11 Meriton Tower,
528 Kent St,
Sydney NSW 2000

Architect:
PTW Architects **PTW**
Level 13, 9 Castlereagh St
Sydney NSW Australia 2000
T 612 9232 6877
F 612 9221 4139
www.ptw.com.au

Contractor:

Consultants:
Planner
Structural
Services
Landscape
Acoustics
Traffic

MERITON THOMAS STREET
Thomas Street/ Albert Avenue
Cherrybrook NSW 2067

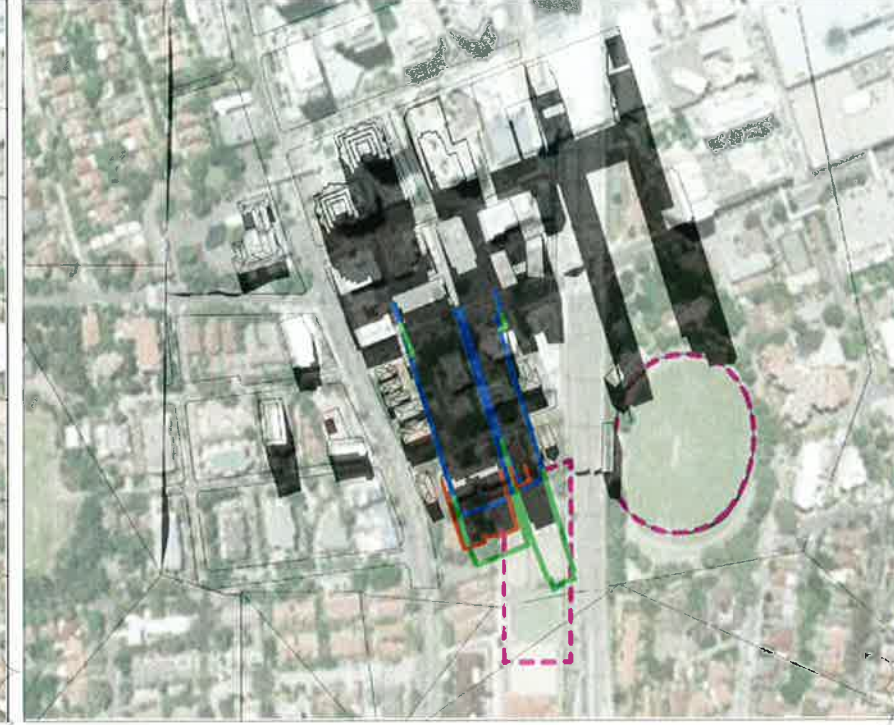
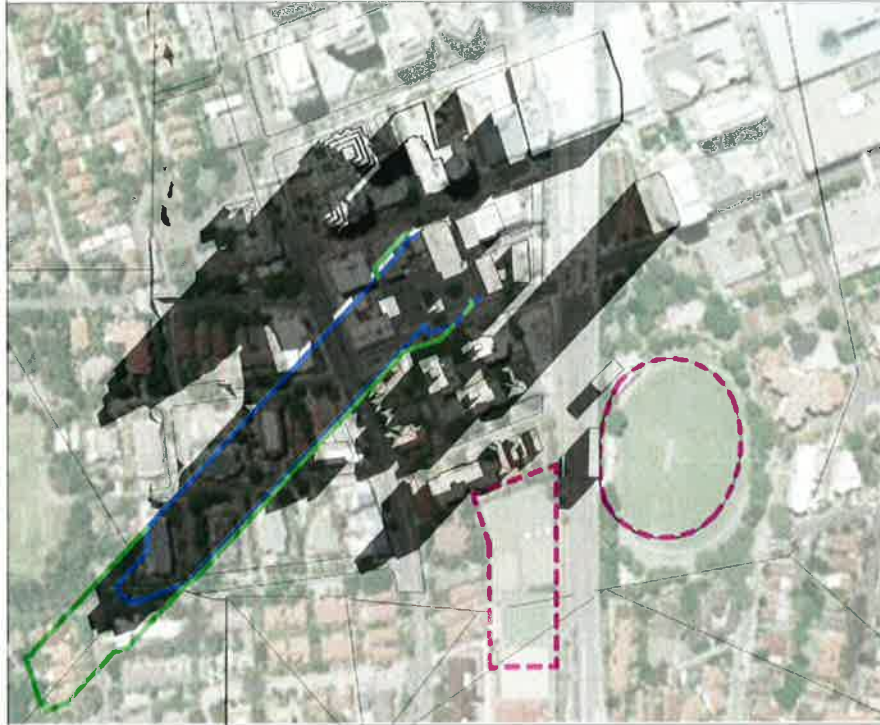
Project No: 210007
Scale: As indicated (GA)
Date: as per schedule
Drawn:
Checked:
Approved:

SHADOW DIAGRAM
21 MARCH

9 AM, 21 JUNE

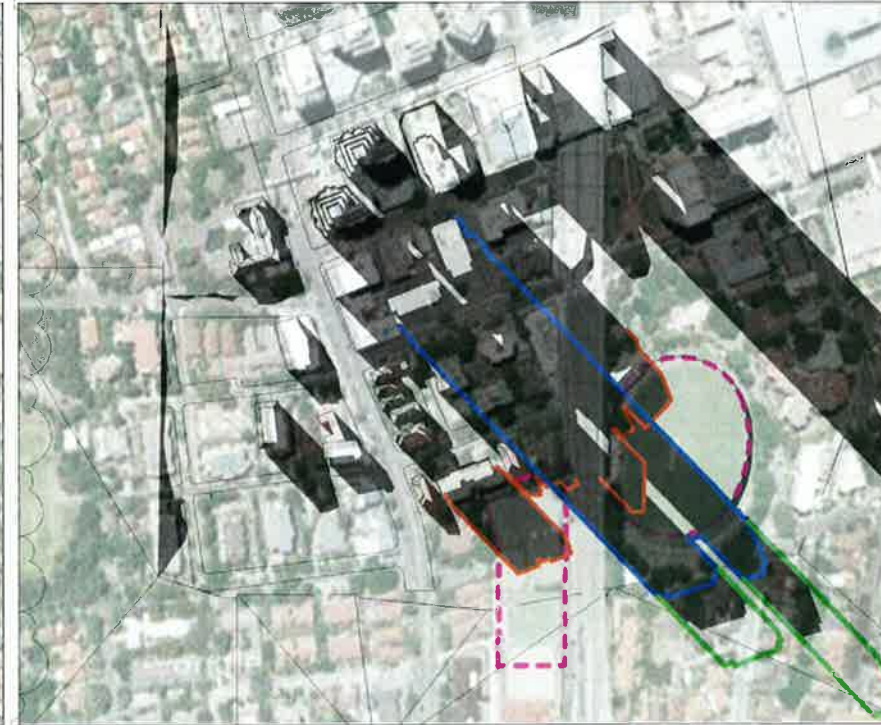
12 PM, 21 JUNE

1 PM, 21 JUNE



2 PM, 21 JUNE

3 PM, 21 JUNE



DRAWINGS ADDED

SHADOWS REVISED TO REFLECT BUILDING HEIGHT CHANGE



LEGEND

- SHADOW CAST BY APPROVED MODIFICATION 3
- SHADOW CAST BY ORIGINAL MODIFICATION 6
- SHADOWS (INCLUDING REVISED MODIFICATION 6)
- SHADOW CAST BY EXISTING BUILDINGS
- OUTLINE OF OVAL & CROQUET CLUB

Revisions

E. Revised Modification 6	06/2012
F. Revised as shown	06/2012
D. S75W Modification 6	06/2012
C. Section 75W Submission	11/2012
B. EA Submission	18/12/09
A. Submitted for Test of adequacy	09/11/09

Do not scale from drawings. Verify all dimensions on site before commencing work. Copying or the reproduction of this drawing is strictly prohibited without the consent of PTW Architects P/L.

Client
Meriton Group
Level 11 Meriton Tower,
525 Kent St,
Sydney NSW 2000

Architect
PTW Architects **PTW**
Level 13, 9 Castlereagh St
Sydney NSW Australia 2000
T 612 0222 8877
F 612 9621 4139
www.ptw.com.au

Contractor

Consultants

- Planner
- Structural
- Services
- Landscape
- Acoustics
- Traffic

MERITON THOMAS STREET
Thomas Street, Abart Avenue
Cherrywood NSW 2067

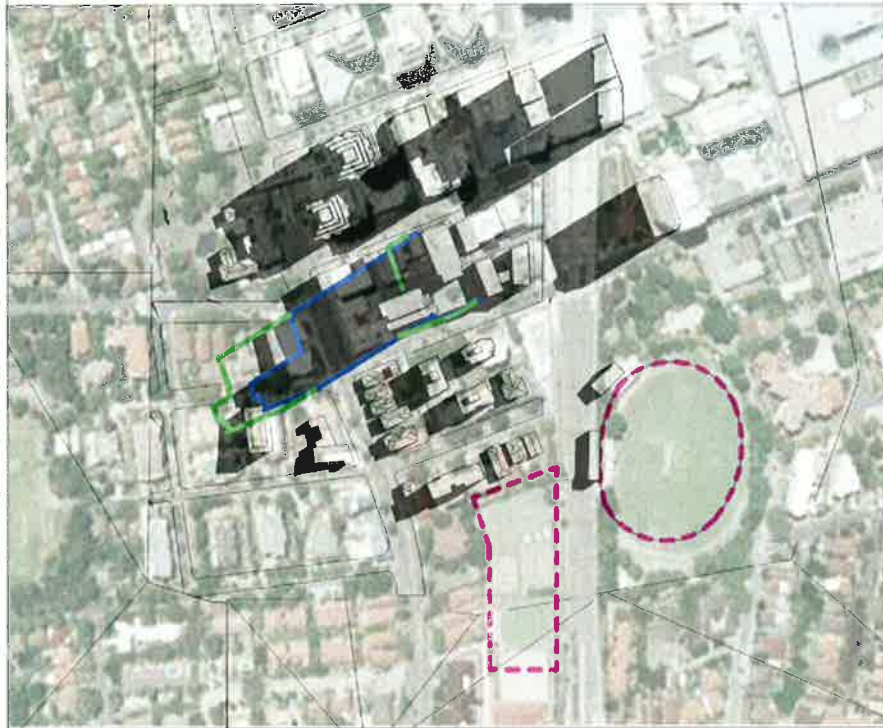
Project No: 212007
Scale: As indicated (GAT)
Date: 18/06/12
Drawn: [Name]
Checked: [Name]
Approved: [Name]

SHADOW DIAGRAM
21 JUNE

9 AM, 21 SEPTEMBER

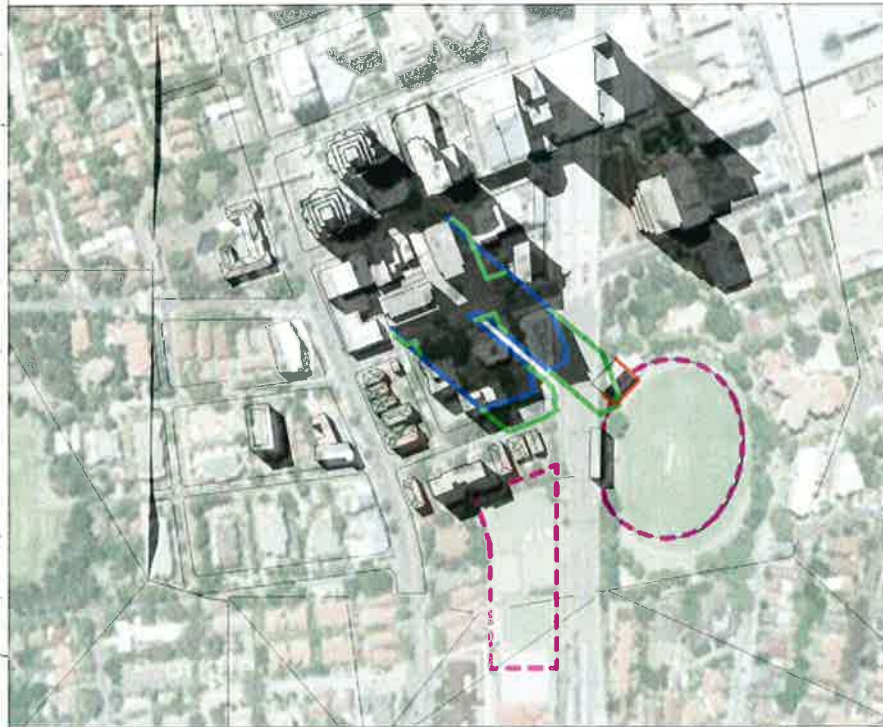
12 PM, 21 SEPTEMBER

1 PM, 21 SEPTEMBER



2 PM, 21 SEPTEMBER

3 PM, 21 SEPTEMBER



DRAWINGS ADDED

SHADOWS REVISED TO REFLECT BUILDING HEIGHT CHANGE



LEGEND

- SHADOW CAST BY APPROVED MODIFICATION 3
- SHADOW CAST BY ORIGINAL MODIFICATION 6
- SHADOWS (INCLUDING REVISED MODIFICATION 6)
- SHADOW CAST BY EXISTING BUILDINGS
- - - OUTLINE OF OVAL & CROQUET CLUB

Revisions

E. Revised Modification 6	02/12/2012
D. S75W Modification 6	06/2012
C. Section 75W Submission	11/2012
B. EA Submission	16/12/09
A. Submitted for Test of Adequacy	06/11/09

Do not scale from drawings. Verify all dimensions on site before commencing work. Copying or the reproduction of this drawing is strictly prohibited without the consent of PTW Architects P/L.

Client
Meriton Group
Level 11 Meriton Tower,
525 Kent St,
Sydney NSW 2000

Architect
PTW Architects **PTW**
Level 13, 9 Castlereagh St
Sydney NSW Australia 2000
T 612 9232 8877
F 612 9221 4139
www.ptw.com.au
Contractor:

Consultants
Planner
Structural
Services
Landscape
Acoustics
Traffic

MERITON THOMAS STREET
Thomas Street/Albert Avenue
Cherrywood NSW 2067

Project No: 21002
Scale: As indicated (GPA)
Date: 24/09/14
Drawn:
Checked:
Approved:

SHADOW DIAGRAM
21 SEPTEMBER