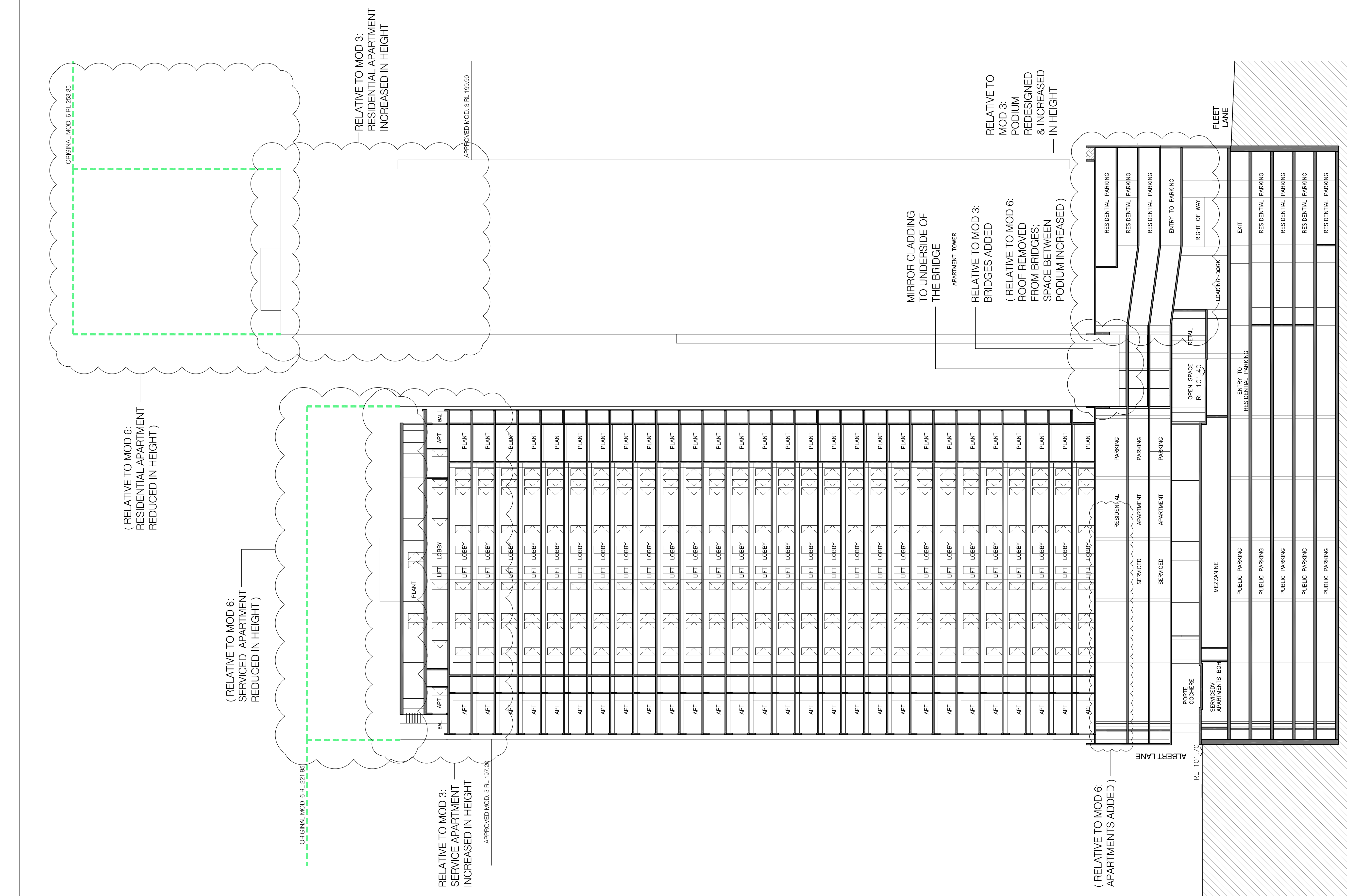


1 SECTION-OFFICE  
1:250

PROPOSED HEIGHT	RL 209.55
LEVEL 33	RL 206.25
LEVEL 32	RL 203.05
LEVEL 31	RL 199.95
LEVEL 30	RL 196.85
LEVEL 29	RL 193.75
LEVEL 28	RL 190.65
LEVEL 27	RL 187.55
LEVEL 26	RL 184.45
LEVEL 25	RL 181.35
LEVEL 24	RL 178.25
LEVEL 23	RL 175.15
LEVEL 22	RL 172.05
LEVEL 21	RL 168.95
LEVEL 20	RL 165.85
LEVEL 19	RL 162.75
LEVEL 18	RL 159.65
LEVEL 17	RL 156.55
LEVEL 16	RL 153.45
LEVEL 15	RL 150.35
LEVEL 14	RL 147.25
LEVEL 13	RL 144.15
LEVEL 12	RL 141.05
LEVEL 11	RL 137.95
LEVEL 10	RL 134.85
LEVEL 9	RL 131.75
LEVEL 8	RL 128.65
LEVEL 7	RL 125.55
LEVEL 6	RL 122.45
LEVEL 5	RL 119.35
LEVEL 4	RL 116.25
LEVEL 3	RL 113.15
LEVEL 2	RL 109.00
LEVEL 1	RL 106.10
GROUND LEVEL	RL 101.40
LOADING DOCK	RL 98.40
BASEMENT 1	RL 95.50
BASEMENT 2	RL 92.60
BASEMENT 3	RL 89.70
BASEMENT 4	RL 86.80
BASEMENT 5	RL 83.90



Revisions

E Revised Modification 6	02.12.2013
D S75W Modification 6	05.2013
C Section 75W Submission	11.2012
B EA Submission	18.12.09
A submitted for Test of adequacy	09.11.09

Do not scale from drawings. Verify all dimensions on site before commencing work. Copying or the reproduction of this drawing is strictly prohibited without the consent of PTW Architects P/L.

Client  
**Meriton Group**  
Level 11 Meriton Tower,  
528 Kent St,  
Sydney NSW 2000

Architect  
**PTW Architects**  
Level 13, 9 Castlereagh St  
Sydney NSW Australia 2000  
T 612 9232 5877  
F 612 9221 4139  
www.ptw.com.au

Contractor

Consultants

Planner	-
Structural	-
Services	-
Landscape	-
Acoustics	-
Traffic	-

**MERITON THOMAS STREET**  
Thomas Street/ Albert Avenue  
Chatswood NSW 2067

Project No. 212007  
Scale: 1:250/@A1;1:500/@A3  
Date: 10/9/2009  
Drawn: EA  
Checked: EA  
Approved: SP