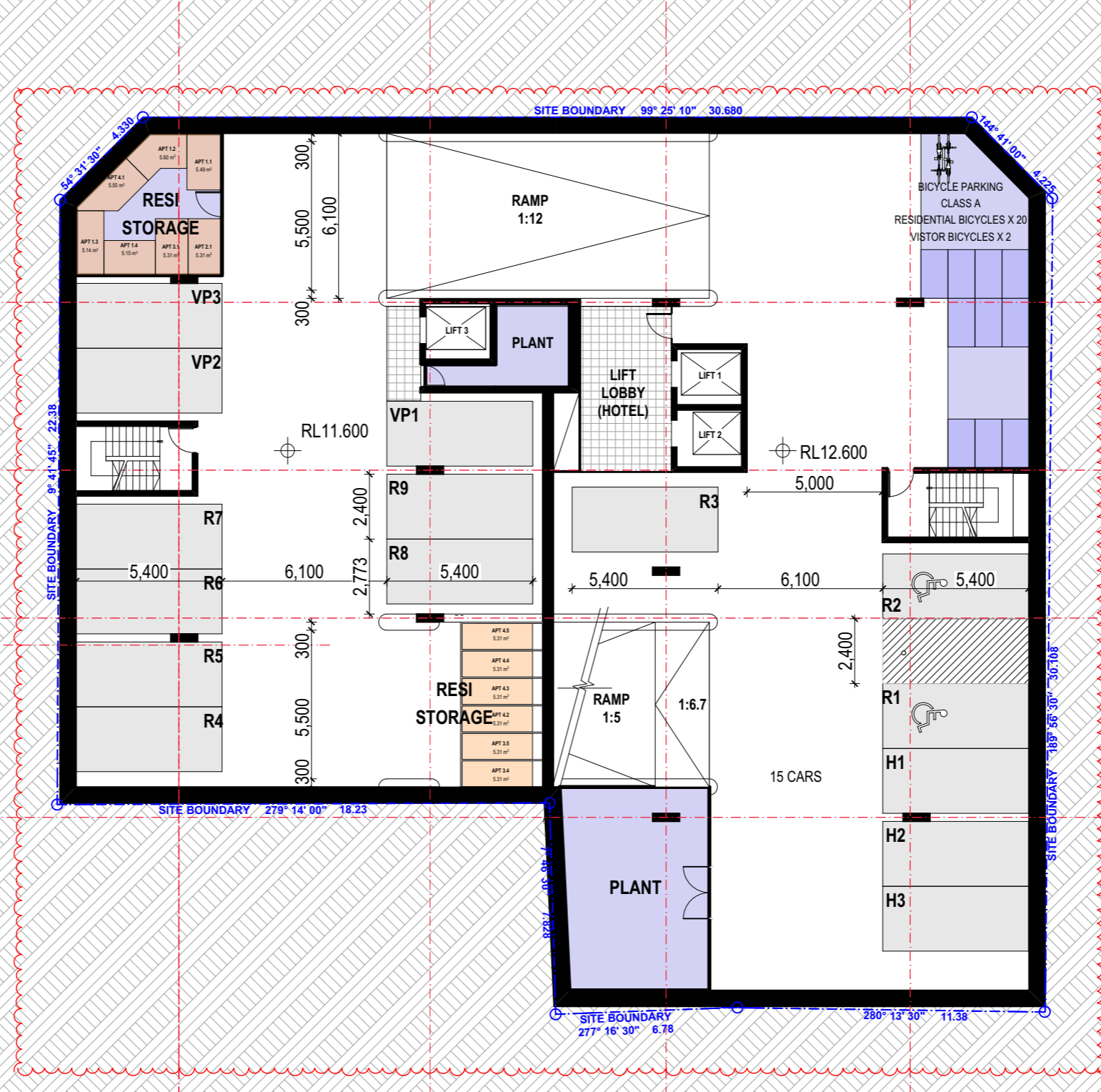


CLEVELAND STREET

EVELEIGH STREET

WOODBURN STREET

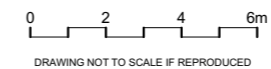


- REVISION C**  
**AMENDMENTS**
- 2 LEVELS OF BASEMENT REMOVED
  - CAR ALLOCATION AMENDED  
 9 =RESIDENTIAL  
 3 =VISITORS  
 5 =RETAIL & WINEBAR  
 11=HOTEL  
 2 =SERVICES  
 30=TOTAL
  - BICYCLES ALLOCATION  
 20=RESIDENTIAL  
 2 =VISITORS  
 10=RETAIL  
 2=HOTEL
  - END OF TRIP FACILITIES ADDED AT LEVEL 1 BASEMENT

- LEGENDS**
- R1 - RESIDENTIAL PARKING
  - VP1 - VISITORS PARKING
  - H1 - HOTEL PARKING
  - SD1 - SERVICE DELIVERY VEHICLE PARKING
  - RWB1 - RETAIL & WINE BAR
  - ADAPTABLE PARKING

C	2 LEVELS OF BASEMENTS REMOVED, CARPARKING RELOCATED AS PER DOP'S REQUEST	22/02/2018
B	PLANS AMENDED PER COMMENTS FROM TRAFFIC ENGINEER	21/11/2017
A	SUBMISSION FOR SECTION 34 CONFERENCE	20/11/2017

FILE: 4067 Cleveland Street DA Master



**COTTEPARKER**  
**JPRA**  
 SYDNEY  
 Level 4, 50 Stanley Street  
 East Sydney NSW 2010  
 T 61 2 9366 1133  
 COTTEE PARKER ARCHITECTS PTY LTD  
 ABN 77 010 924 106  
 COTTEPARKER.COM.AU

PROJECT:  
**PROPOSED MIXED USE MULTI UNIT RESIDENTIAL DEVELOPMENT**  
 175-177 CLEVELAND ST & 1-5 WOODBURN ST REDFERN  
 DRAWING:  
**LOWER BASEMENT 02 FLOOR PLAN**

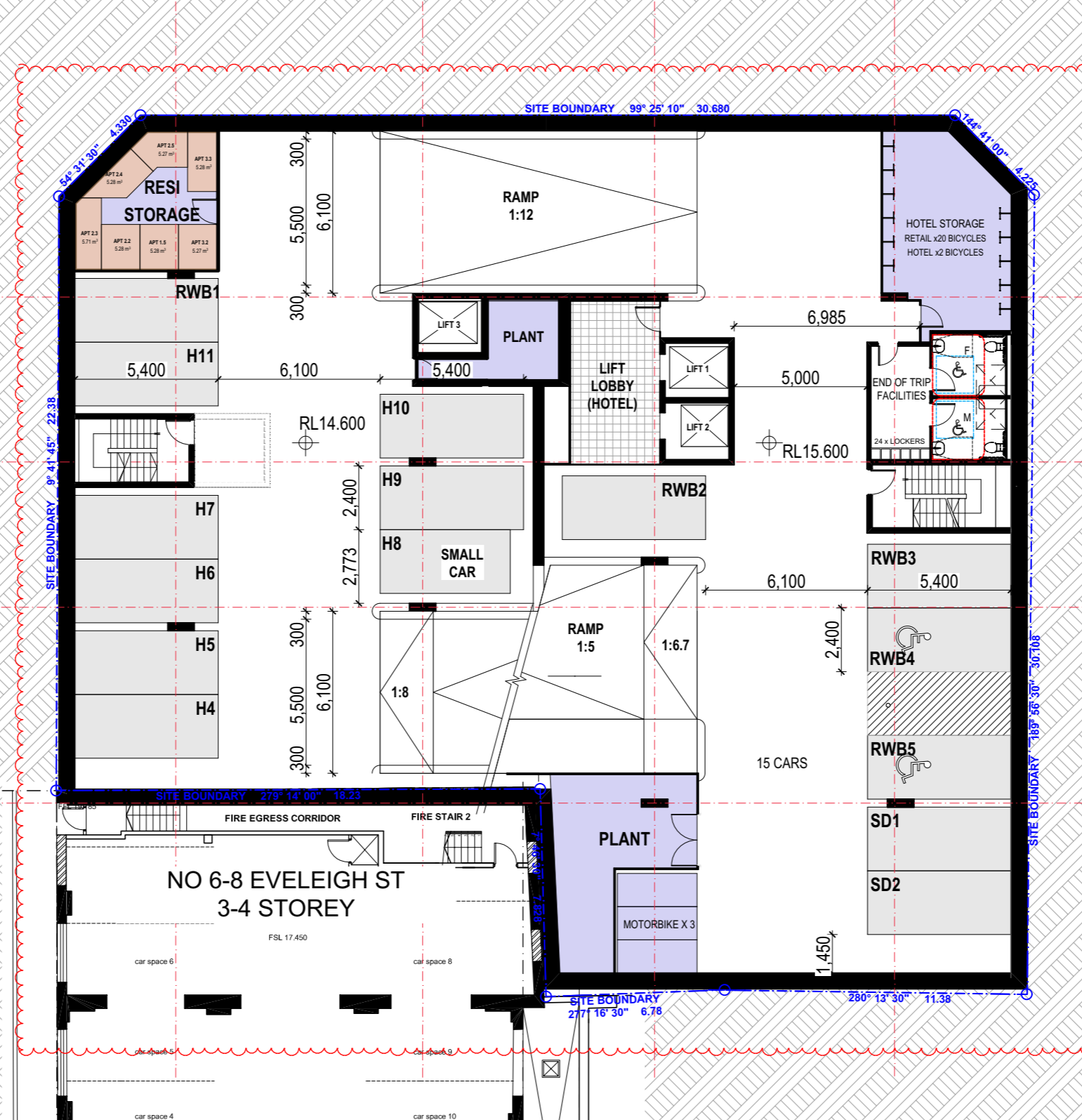
PROJECT NO: 2014067  
 DRAWN BY: RMY/S  
 SCALE: 1:200 @ A3 )  
 DRAWING NO: REV:  
 PLOTTED: 21/02/2018

**DA2002 C**

CLEVELAND STREET

EVELEIGH STREET

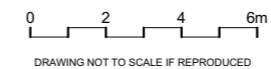
WOODBURN STREET



- REVISION C**  
**AMENDMENTS**
- 2 LEVELS OF BASEMENT REMOVED
  - CAR ALLOCATION AMENDED  
 9 =RESIDENTIAL  
 3 =VISITORS  
 5 =RETAIL & WINEBAR  
 11=HOTEL  
 2 =SERVICES  
 30=TOTAL
  - BICYCLES ALLOCATION  
 20=RESIDENTIAL  
 2 =VISITORS  
 10=RETAIL  
 2 =HOTEL
  - END OF TRIP FACILITIES ADDED AT LEVEL 1 BASEMENT

- LEGENDS**
- R1 - RESIDENTIAL PARKING
  - VP1 - VISITORS PARKING
  - H1 - HOTEL PARKING
  - SD1 - SERVICE DELIVERY VEHICLE PARKING
  - RWB1 - RETAIL & WINE BAR
  - ADAPTABLE PARKING

C 2 LEVELS OF BASEMENTS REMOVED, CARPARKING RELOCATED AS PER DOP'S REQUEST 22/02/2018  
 B PLANS AMENDED PER COMMENTS FROM TRAFFIC ENGINEER 21/11/2017  
 A SUBMISSION FOR SECTION 34 CONFERENCE 20/11/2017  
 FILE: 4067 Cleveland Street DA Master



**COTTEPARKER**  
**JPRA**  
 SYDNEY  
 Level 4, 50 Stanley Street  
 East Sydney NSW 2010  
 T 61 2 9366 1133  
 COTTEE PARKER ARCHITECTS PTY LTD  
 ABN 77 010 924 106  
 COTTEPARKER.COM.AU

PROJECT: PROPOSED MIXED USE MULTI UNIT RESIDENTIAL DEVELOPMENT  
 175-177 CLEVELAND ST & 1-5 WOODBURN ST REDFERN  
 DRAWING: LOWER BASEMENT 01 FLOOR PLAN

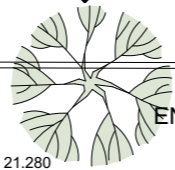
PROJECT NO: 2014067  
 DRAWN BY: RMYYS  
 SCALE: 1:200 @ A3 )  
 DRAWING NO: REV:  
 PLOTTED: 21/02/2018

**DA2003 C**



# CLEVELAND STREET

EXISTING TREE



ENTRANCE

EVELEIGH STREET

WOODBURN STREET

NO 165-163  
CLEVELAND ST  
3 STOREY

NO 179  
CLEVELAND ST  
3 STOREY

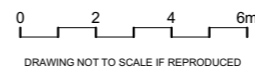
### REVISION C AMENDMENTS

1. SECURITY DOOR SHUTTER TO CARPARK SHOWN
2. SECURITY FENCE/GATE TO GARBAGE ROOM ADDED

SECURITY GATE



C SECURITY DOOR TO BASEMENT SHOWN & SECURITY FENCE TO GARBAGE ROOM ADDED 22/02/2018  
 B PLANS AMENDED PER COMMENTS FROM TRAFFIC ENGINEER 21/11/2017  
 A SUBMISSION FOR SECTION 34 CONFERENCE 20/11/2017  
 FILE: 4067 Cleveland Street DA Master

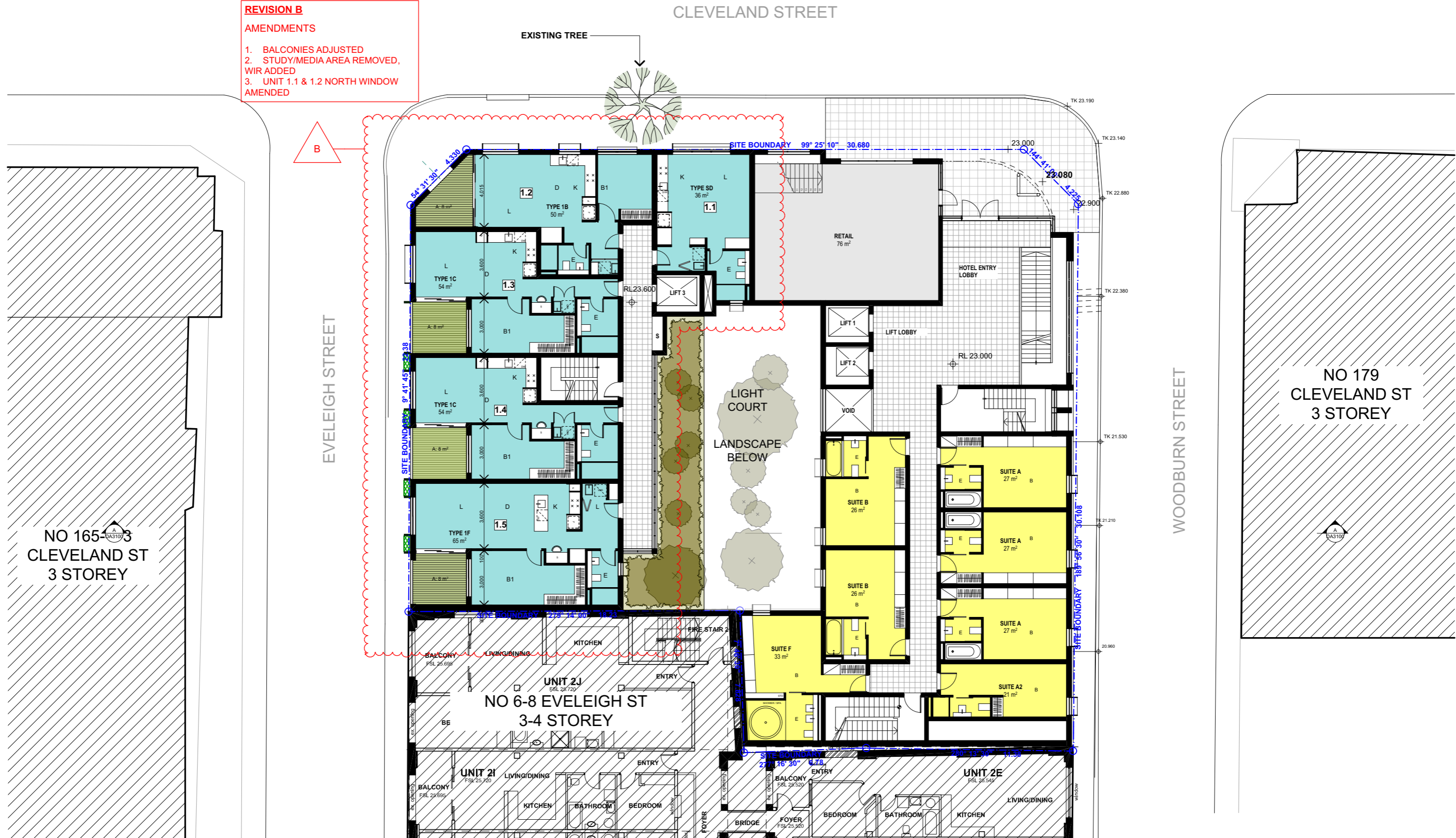


**COTTEEPARKER**  
**JPRA**  
 SYDNEY  
 Level 4, 50 Stanley Street  
 East Sydney NSW 2010  
 T 61 2 9366 1133  
 COTTEE PARKER ARCHITECTS PTY LTD  
 ABN 77 010 924 106  
 COTTEEPARKER.COM.AU

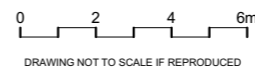
PROJECT: PROPOSED MIXED USE MULTI UNIT RESIDENTIAL DEVELOPMENT  
 175-177 CLEVELAND ST & 1-5 WOODBURN ST REDFERN  
 DRAWING: GROUND / LEVEL 1 FLOOR PLAN

PROJECT NO: 2014067  
 DRAWN BY: RM,YS  
 SCALE: 1:200 @ A3  
 DRAWING NO: REV:  
 PLOTTED: 16/03/2018  
**DA2004 C**

**REVISION B**  
**AMENDMENTS**  
 1. BALCONIES ADJUSTED  
 2. STUDY/MEDIA AREA REMOVED, WIR ADDED  
 3. UNIT 1.1 & 1.2 NORTH WINDOW AMENDED



B UNIT TYPE 1B 1C & 1F AMENDED AS PER DOP'S REQUEST UNIT TYPE SD WINDOW ADJUSTED 22/02/2018  
 A SUBMISSION FOR SECTION 34 CONFERENCE 20/11/2017  
 FILE: 4067 Cleveland Street DA Master



**COTTEEPARKER**  
**JPRA**  
 SYDNEY  
 Level 4, 50 Stanley Street  
 East Sydney NSW 2010  
 T 61 2 9366 1133  
 COTTEE PARKER ARCHITECTS PTY LTD  
 ABN 77 010 924 106  
 COTTEEPARKER.COM.AU

PROJECT: PROPOSED MIXED USE MULTI UNIT RESIDENTIAL DEVELOPMENT  
 175-177 CLEVELAND ST & 1-5 WOODBURN ST REDFERN  
 DRAWING: LEVEL 2 FLOOR PLAN

PROJECT NO: 2014067  
 DRAWN BY: RM,YS  
 SCALE: 1:200 @ A3  
 DRAWING NO: REV:  
 PLOTTED: 21/02/2018  
**DA2005 B**

CLEVELAND STREET

EVELEIGH STREET

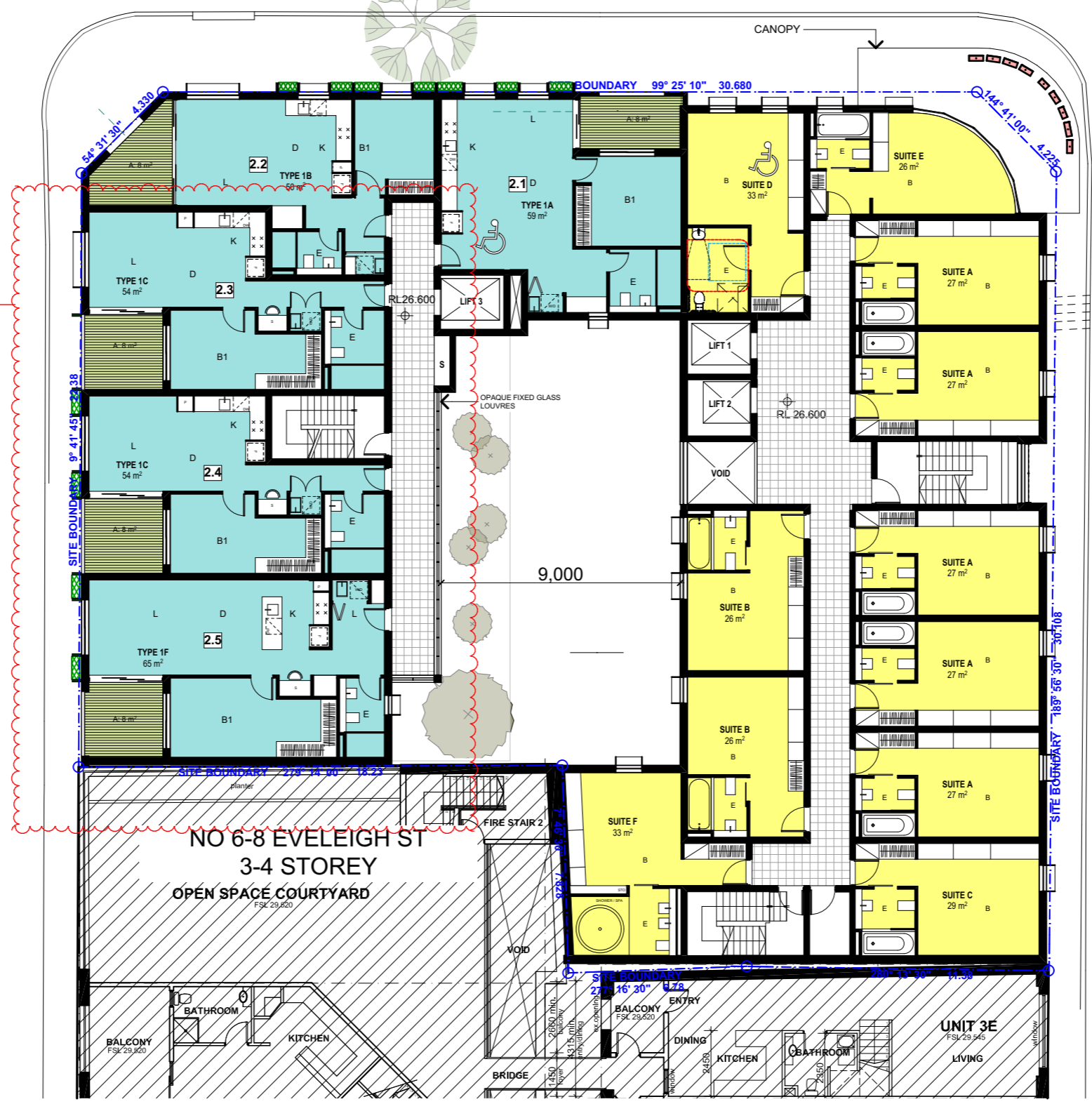
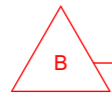
WOODBURN STREET

NO 165-167  
CLEVELAND ST  
3 STOREY

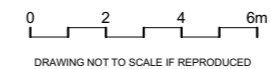
NO 179  
CLEVELAND ST  
3 STOREY

NO 6-8 EVELEIGH ST  
3-4 STOREY  
OPEN SPACE COURTYARD  
FSL 29.620

**REVISION B**  
AMENDMENTS  
1. BALCONIES ADJUSTED  
2. STUDY/MEDIA AREA REMOVED,  
WIR ADDED



B UNIT TYPE 1B 1C & 1F AMENDED AS PER DOP'S REQUEST 22/02/2018  
A SUBMISSION FOR SECTION 34 CONFERENCE 20/11/2017  
FILE: 4067 Cleveland Street DA Master



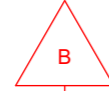
**COTTEEPARKER**  
JPR  
SYDNEY  
Level 4, 50 Stanley Street  
East Sydney NSW 2010  
T 61 2 9366 1133  
COTTEE PARKER ARCHITECTS PTY LTD  
ABN 77 010 924 106  
COTTEEPARKER.COM.AU

PROJECT: PROPOSED MIXED USE MULTI UNIT RESIDENTIAL DEVELOPMENT  
175-177 CLEVELAND ST & 1-5 WOODBURN ST REDFERN  
DRAWING: LEVEL 3 FLOOR PLAN

PROJECT NO: 2014067  
DRAWN BY: RM,YS  
SCALE: 1:200 @ A3  
DRAWING NO: REV:  
PLOTTED: 21/02/2018  
**DA2006 B**

**REVISION B**  
**AMENDMENTS**  
 1. BALCONIES ADJUSTED  
 2. STUDY/MEDIA AREA REMOVED,  
 WIR ADDED

CLEVELAND STREET



EVELEIGH STREET

WOODBURN STREET

NO 179  
 CLEVELAND ST  
 3 STOREY

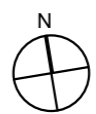
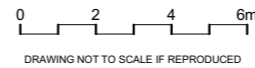
NO 165  
 CLEVELAND ST  
 3 STOREY



NO 6-8 EVELEIGH ST  
 3-4 STOREY  
 FORCOURT OPEN SPACE BELOW

UNIT 3E  
 FSL 32.145  
 BALCONY  
 FSL 32.145  
 BEDROOM 2  
 BEDROOM 1

B UNIT TYPE 1B 1C & 1F AMENDED AS PER DOP'S REQUEST 22/02/2018  
 A SUBMISSION FOR SECTION 34 CONFERENCE 20/11/2017  
 FILE: 4067 Cleveland Street DA Master



**COTTEEPARKER**  
**JPRA**  
 SYDNEY  
 Level 4, 50 Stanley Street  
 East Sydney NSW 2010  
 T 61 2 9366 1133  
 COTTEE PARKER ARCHITECTS PTY LTD  
 ABN 77 010 924 106  
 COTTEEPARKER.COM.AU

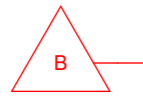
PROJECT: PROPOSED MIXED USE MULTI UNIT RESIDENTIAL DEVELOPMENT  
 175-177 CLEVELAND ST & 1-5 WOODBURN ST REDFERN  
 DRAWING: LEVEL 4 FLOOR PLAN

PROJECT NO: 2014067  
 DRAWN BY: RM,YS  
 SCALE: 1:200 @ A3 )  
 REV: REV:  
 PLOTTED: 21/02/2018  
**DA2007 B**

DRAWING NOT TO SCALE IF REPRODUCED

CLEVELAND STREET

**REVISION B**  
**AMENDMENTS**  
 1. BALCONIES ADJUSTED  
 2. STUDY/MEDIA AREA REMOVED,  
 WIR ADDED



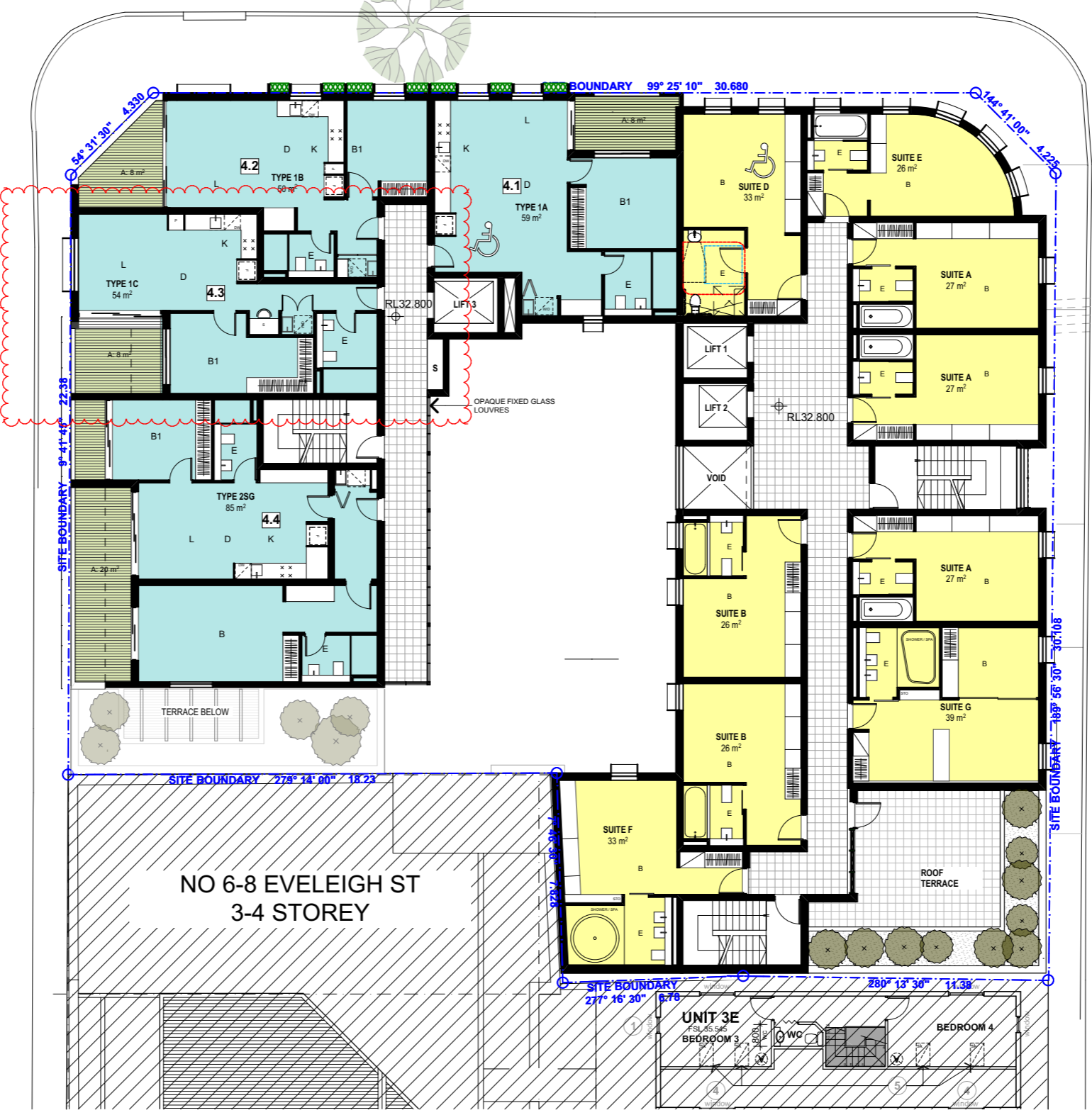
EVELEIGH STREET

WOODBURN STREET

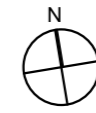
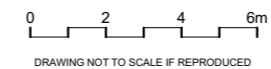
NO 165-167  
 CLEVELAND ST  
 3 STOREY

NO 179  
 CLEVELAND ST  
 3 STOREY

NO 6-8 EVELEIGH ST  
 3-4 STOREY



B UNIT TYPE 1B 1C & 1F AMENDED AS PER DOP'S REQUEST 22/02/2018  
 A SUBMISSION FOR SECTION 34 CONFERENCE 20/11/2017  
 FILE: 4067 Cleveland Street DA Master



**COTTEEPARKER**  
**JPRA**  
 SYDNEY  
 Level 4, 50 Stanley Street  
 East Sydney NSW 2010  
 T: 61 2 9366 1133  
 COTTEE PARKER ARCHITECTS PTY LTD  
 ABN: 77 010 924 106  
 COTTEEPARKER.COM.AU

PROJECT: PROPOSED MIXED USE MULTI UNIT RESIDENTIAL DEVELOPMENT  
 175-177 CLEVELAND ST & 1-5 WOODBURN ST REDFERN  
 DRAWING: LEVEL 5 FLOOR PLAN

PROJECT NO: 2014067  
 DRAWN BY: RM,YS  
 SCALE: 1:200 @ A3  
 DRAWING NO: REV:  
 PLOTTED: 21/02/2018  
**DA2008 B**

CLEVELAND STREET

EVELEIGH STREET

WOODBURN STREET

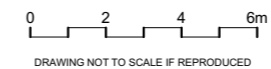
NO 179  
CLEVELAND ST  
3 STOREY

NO 165  
CLEVELAND ST  
3 STOREY

NO 6-8 EVELEIGH ST  
3-4 STOREY



B SERVICES ROOF ADDED 22/02/2018  
 A SUBMISSION FOR SECTION 34 20/11/2017  
 CONFERENCE  
 FILE: 4067 Cleveland Street DA Master



**COTTEEPARKER**  
**JPRA**  
 SYDNEY  
 Level 4, 50 Stanley Street  
 East Sydney NSW 2010  
 T 61 2 9366 1133  
 COTTEE PARKER ARCHITECTS PTY LTD  
 ABN 77 010 924 106  
 COTTEEPARKER.COM.AU

PROJECT: PROPOSED MIXED USE MULTI UNIT RESIDENTIAL DEVELOPMENT  
 175-177 CLEVELAND ST & 1-5 WOODBURN ST REDFERN  
 DRAWING: LEVEL 6 FLOOR PLAN

PROJECT NO: 2014067  
 DRAWN BY: RM,YS  
 SCALE: 1:200 @ A3  
 DRAWING NO: REV:  
 PLOTTED: 21/02/2018  
**DA2009 B**